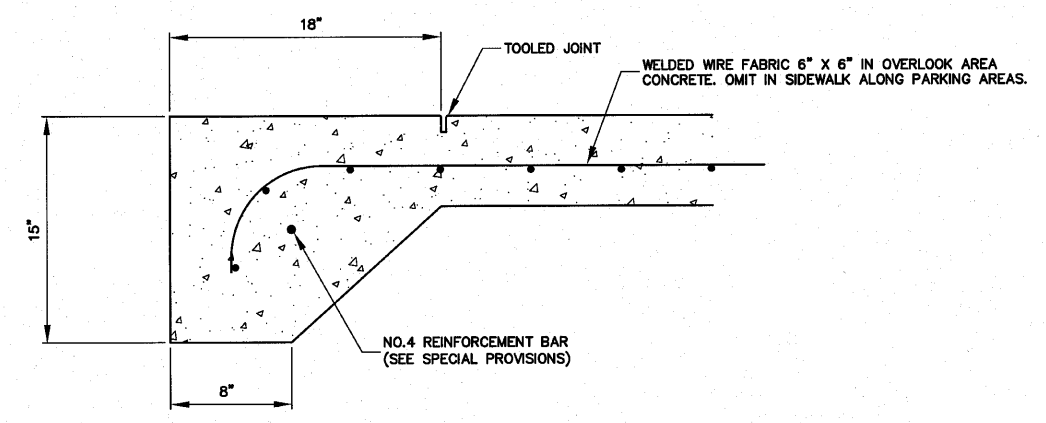
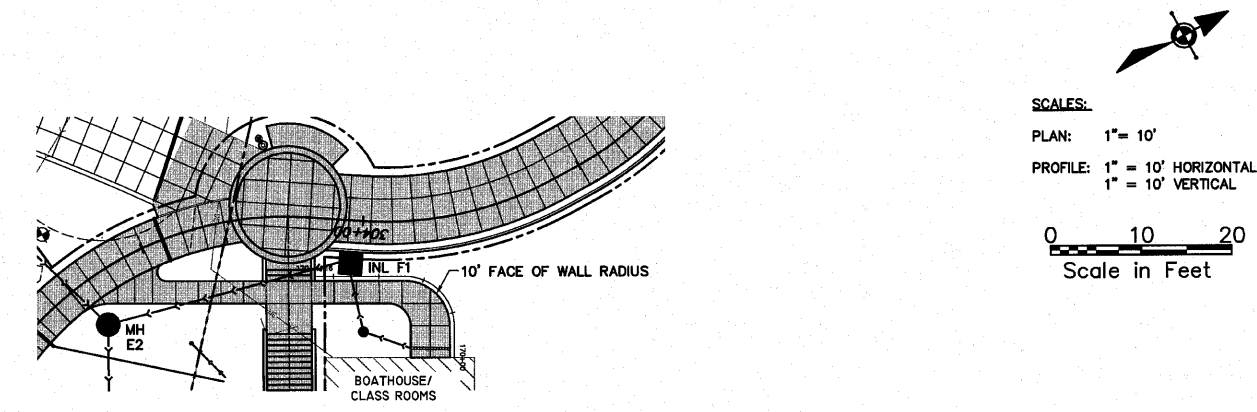


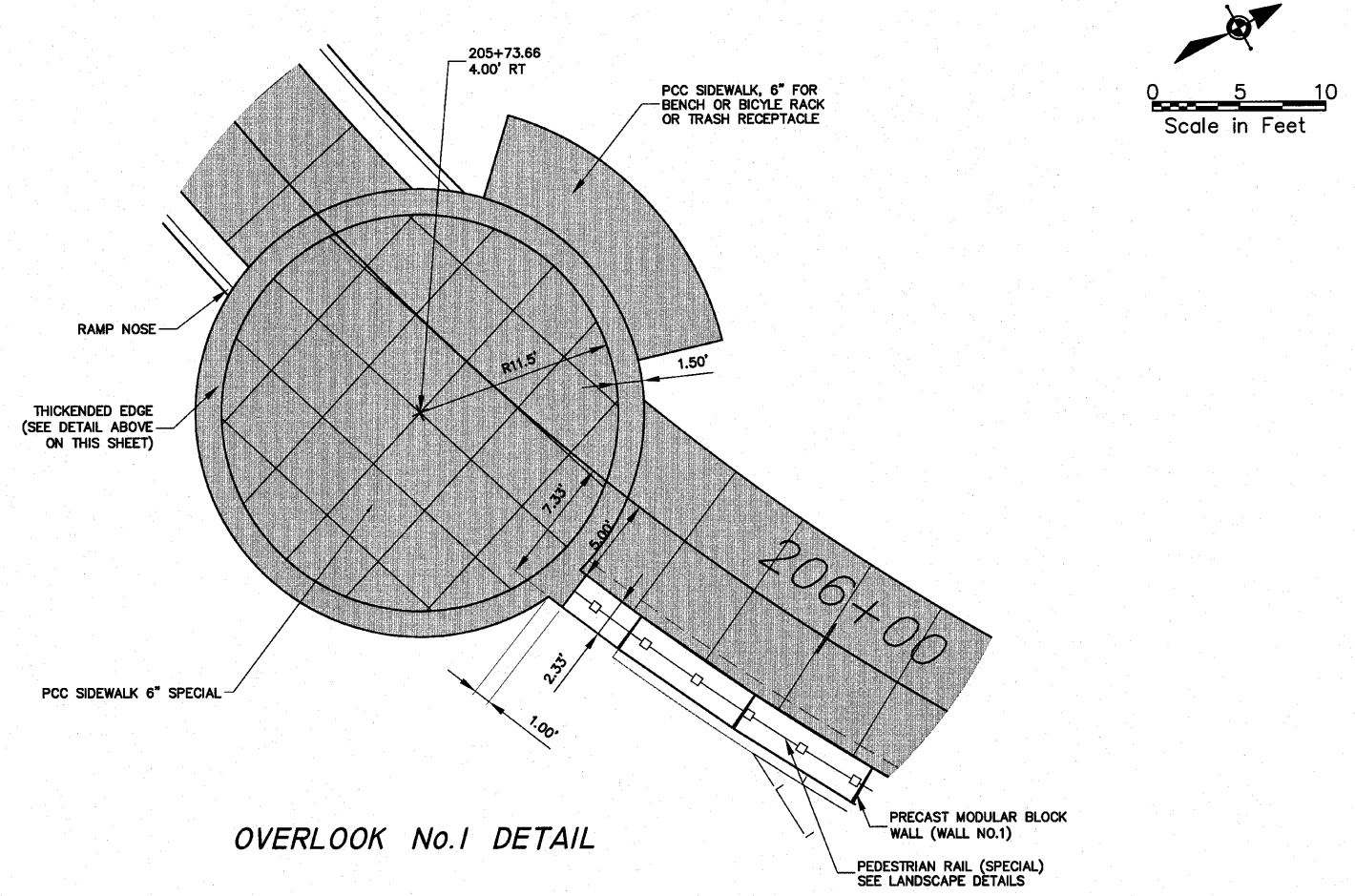
BOAT HOUSE SIDEWALK AND SEGMENTAL CONCRETE BLOCK WALL DETAIL



PCC SIDEWALK 6\"/>

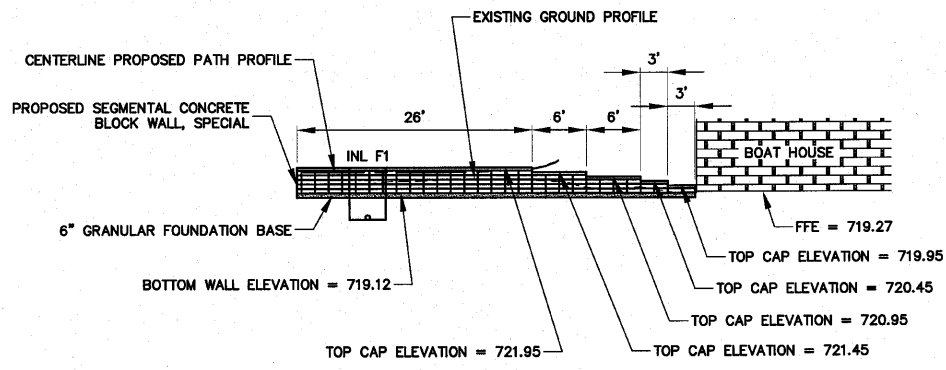
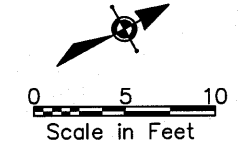
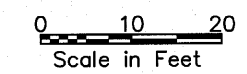


BOAT HOUSE SEGMENTAL CONCRETE BLOCK WALL PROFILE



OVERLOOK No.1 DETAIL

SCALES:
 PLAN: 1" = 10'
 PROFILE: 1" = 10' HORIZONTAL
 1" = 10' VERTICAL



SHEET REVIEW		REVISIONS		SCALE: <i>Varies per Detail</i>	<p>7287 Argus Drive Rockford, Illinois 61107-5837 (815) 398-2332 FAX (815) 398-2496 Design Firm License: Illinois 184-000816 Copyright 2010 By McClure Engineering Associates, Inc.</p>	DETAILS - VARIOUS		SHEET NO.
AGENCY	DATE	NO.	ITEM	DATE		RIVERWALK MUSEUM CAMPUS		146
						711 NORTH MAIN STREET		OF
						ROCKFORD, IL		148
				DATE: AUGUST 13, 2010	FILE: H:\08-008 RIVERWALK MUSEUM\DESIGN\DRAWINGS\08-008 MISC DETAILS.DWG		JOB: 04-28-10-008	

H:\08-008 RIVERWALK MUSEUM\DESIGN\DRAWINGS\08-008 MISC DETAILS.DWG, DETAILS - VARIOUS, 9/7/2010 8:39:14 AM, J.L. MOYR