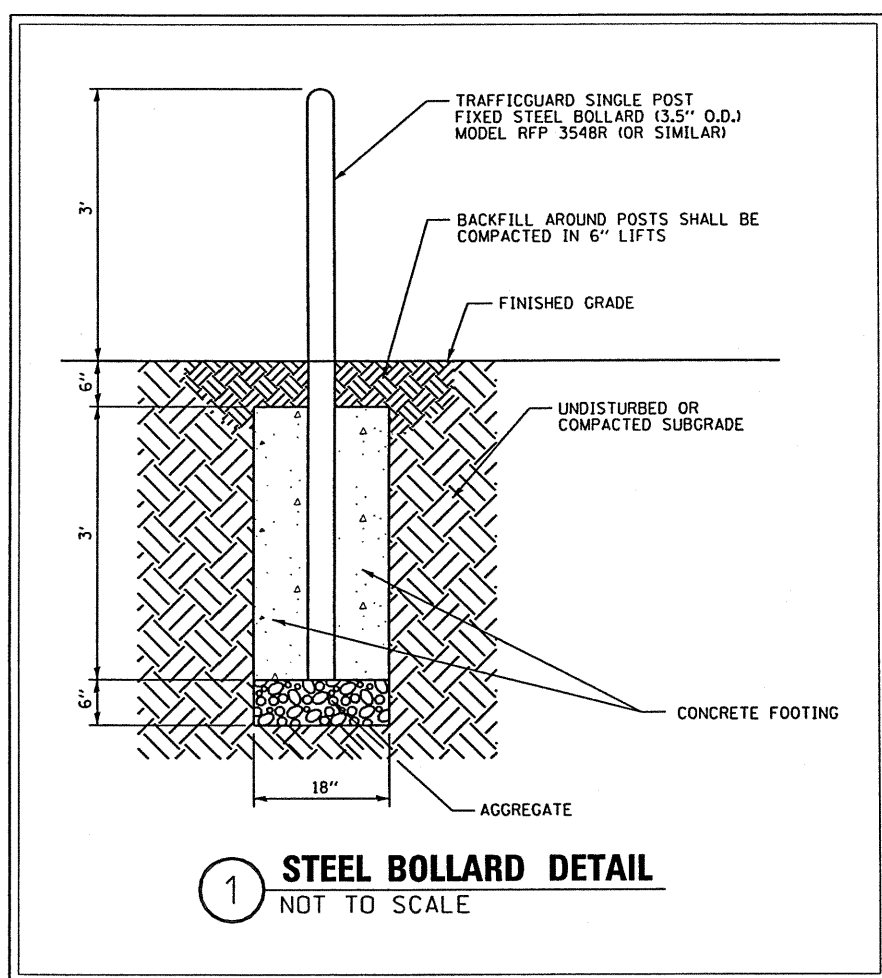
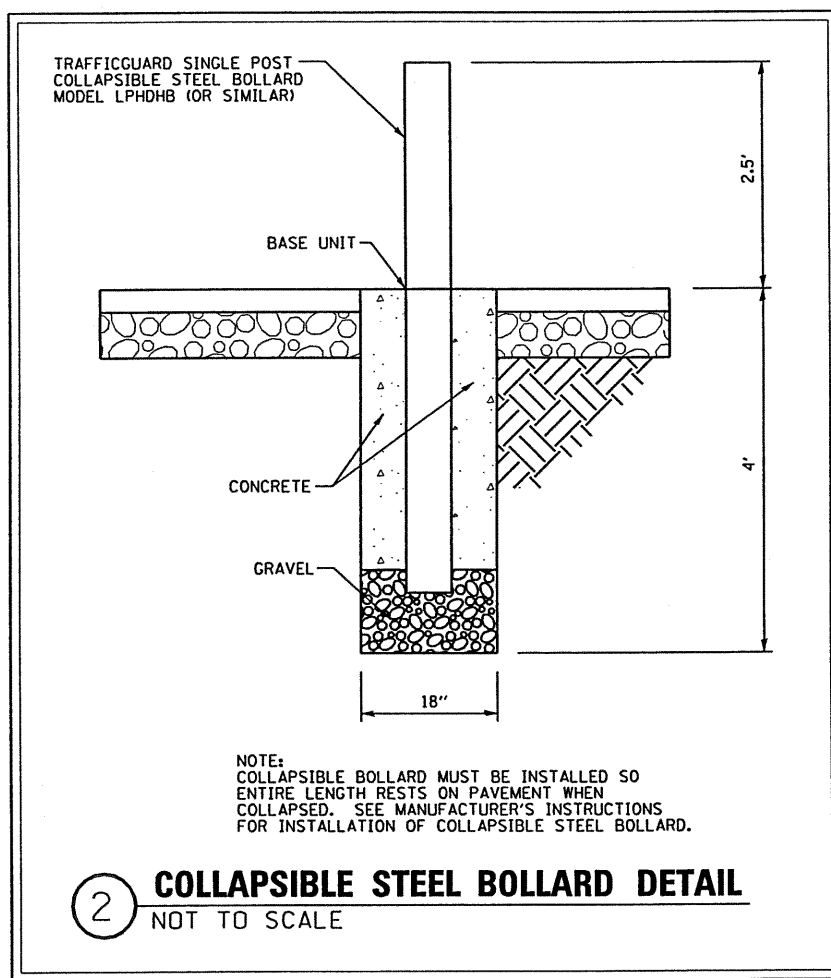


F.A. RTE.	SECTION	COUNTY	TOTAL SHEETS	SHEET NO.
	00-P4002-03-BT	PEORIA	53	28
STA. 100+36.27		TO STA. 179+51.94		
FED. ROAD DIST. NO. ILLINOIS FED. AID PROJECT				

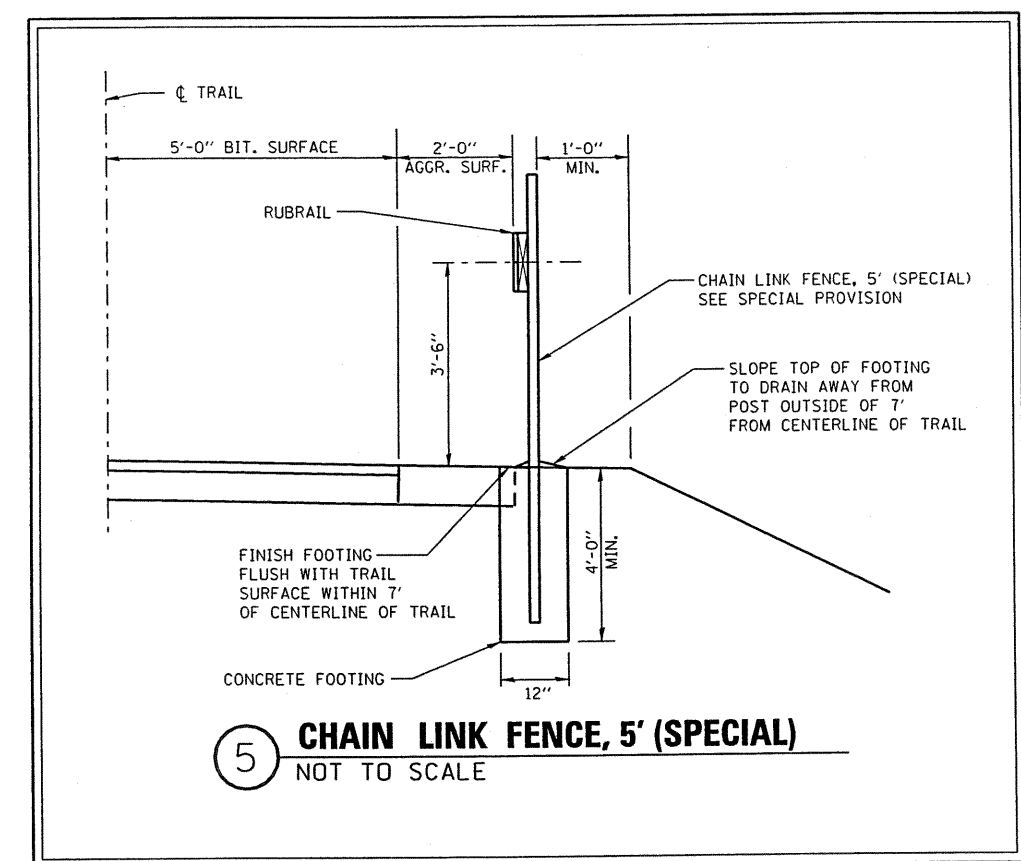


1 **STEEL BOLLARD DETAIL**  
NOT TO SCALE

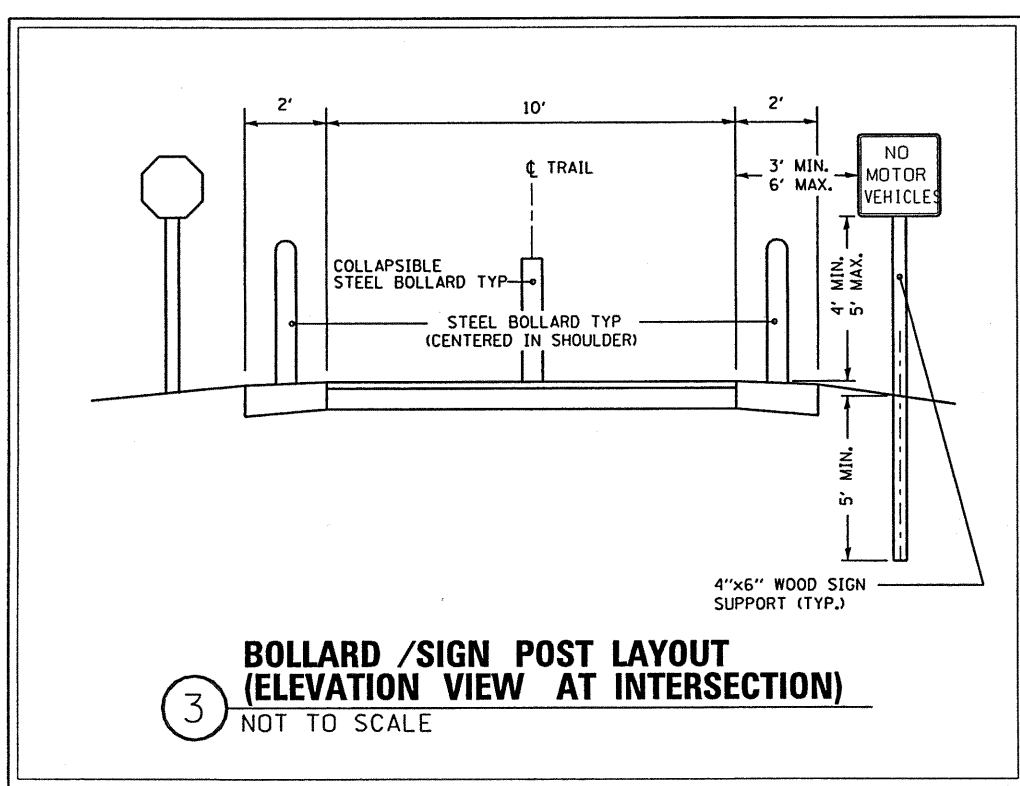


2 **COLLAPSIBLE STEEL BOLLARD DETAIL**  
NOT TO SCALE

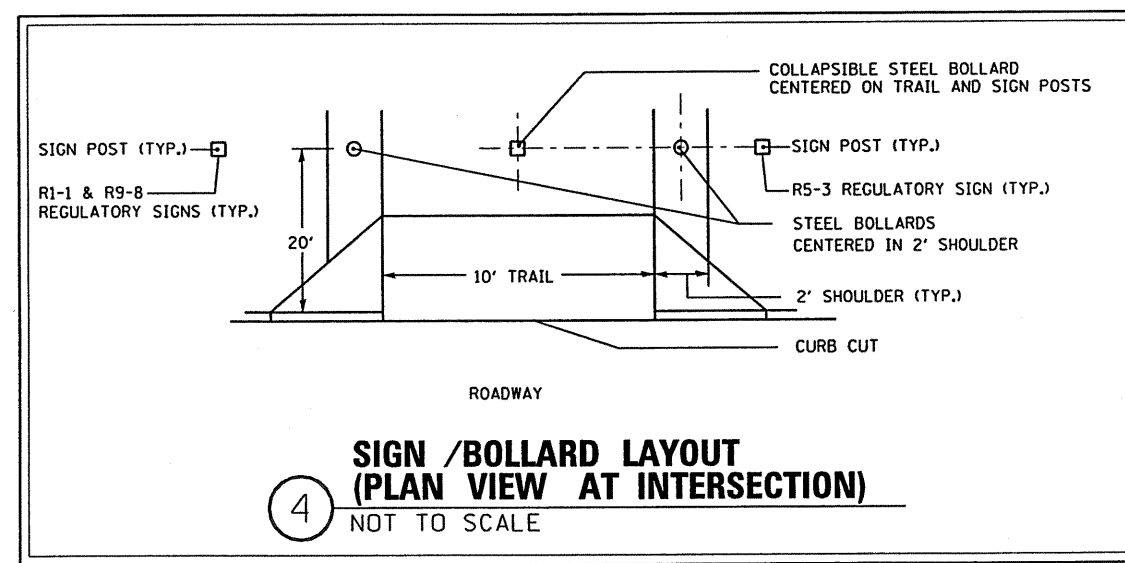
NOTE:  
COLLAPSIBLE BOLLARD MUST BE INSTALLED SO ENTIRE LENGTH RESTS ON PAVEMENT WHEN COLLAPSED. SEE MANUFACTURER'S INSTRUCTIONS FOR INSTALLATION OF COLLAPSIBLE STEEL BOLLARD.



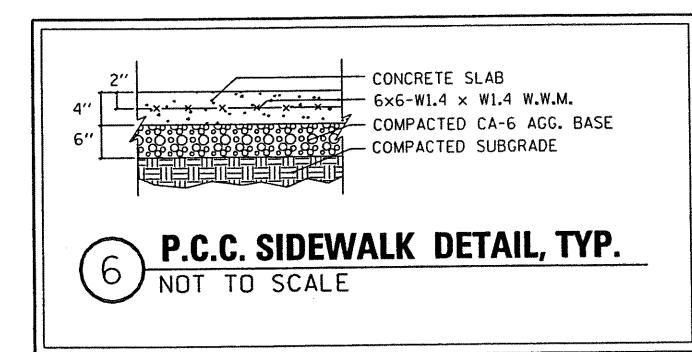
5 **CHAIN LINK FENCE, 5' (SPECIAL)**  
NOT TO SCALE



3 **BOLLARD /SIGN POST LAYOUT (ELEVATION VIEW AT INTERSECTION)**  
NOT TO SCALE



4 **SIGN /BOLLARD LAYOUT (PLAN VIEW AT INTERSECTION)**  
NOT TO SCALE



6 **P.C.C. SIDEWALK DETAIL, TYP.**  
NOT TO SCALE

MAURER & STUTZ, INC. ENGINEERS SURVEYORS

REVISIONS		ILLINOIS DEPARTMENT OF TRANSPORTATION
NAME	DATE	
		MISCELLANEOUS DETAILS ROCK ISLAND/PIMITEOUI BIKE TRAIL SECTION 00-P4002-03-BT PEORIA COUNTY

SCALE: VERT. \_\_\_\_\_  
HORIZ. \_\_\_\_\_  
DATE \_\_\_\_\_

DRAWN BY \_\_\_\_\_  
CHECKED BY \_\_\_\_\_