

PROPOSED CENTERLINE CONTROL COORDINATE TABLE			
LOCATION	DESCRIPTION	LOCAL GROUND SYSTEM	
		NORTHING	EASTING
VERNON AVE.	P.O.L. 33+00.00	10290.94	18988.16
	P.C. 35+19.37	10136.12	19143.57
	Q/¢ INT. 37+33.92	10018.11	19321.10
	P.T. 39+36.65	9977.31	19518.49
	Q/¢ INT. 41+25.09	9973.95	19706.30
BROOKWOOD DR.	P.O.L. 200+90.00	9934.12	19288.77
	P.O.L. 301+00.00	9873.95	19707.23

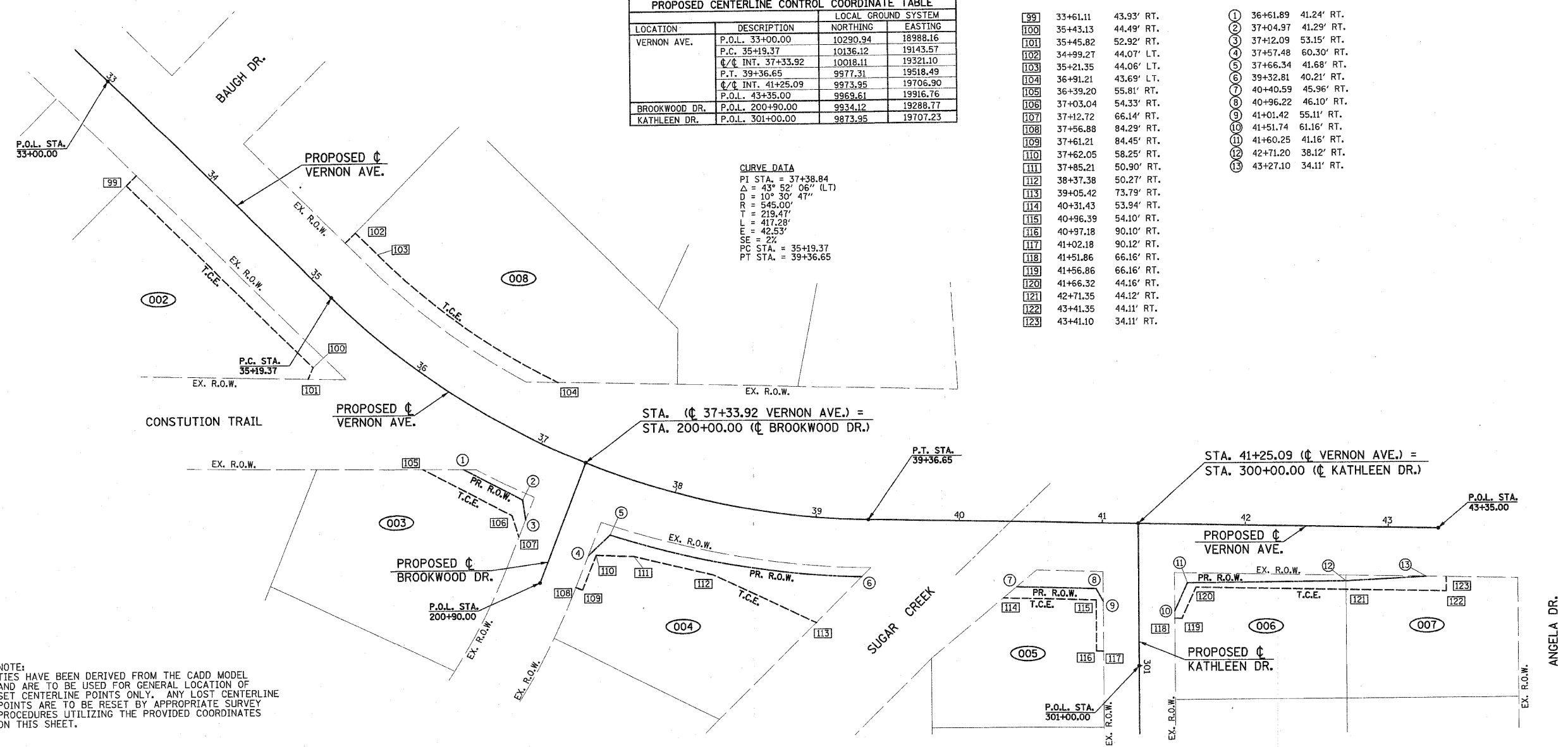
CURVE DATA
 PI STA. = 37+38.84
 Δ = 43° 52' 06" (L.T.)
 D = 10° 30' 47"
 R = 545.00'
 T = 219.47'
 L = 417.23'
 E = 42.53'
 SE = 2%
 PC STA. = 35+19.37
 PT STA. = 39+36.65

TEMPORARY CONSTRUCTION EASEMENT STATION AND OFFSET

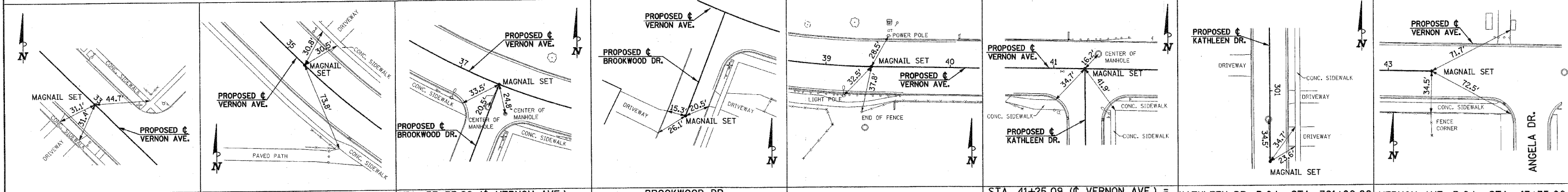
99	33+61.11	43.93' RT.
100	35+43.13	44.49' RT.
101	35+45.82	52.92' RT.
102	34+99.27	44.07' LT.
103	35+21.35	44.06' LT.
104	36+91.21	43.69' LT.
105	36+39.20	55.81' RT.
106	37+03.04	54.33' RT.
107	37+12.72	66.14' RT.
108	37+56.88	84.29' RT.
109	37+61.21	84.45' RT.
110	37+62.05	58.25' RT.
111	37+85.21	50.90' RT.
112	38+37.38	50.27' RT.
113	39+05.42	73.79' RT.
114	40+31.43	53.94' RT.
115	40+96.39	54.10' RT.
116	40+97.18	90.10' RT.
117	41+02.18	90.12' RT.
118	41+51.86	66.16' RT.
119	41+56.86	66.16' RT.
120	41+66.32	44.16' RT.
121	42+71.35	44.12' RT.
122	43+41.35	44.11' RT.
123	43+41.10	34.11' RT.

PROPOSED R.O.W. STATION AND OFFSET

1	36+61.89	41.24' RT.
2	37+04.97	41.29' RT.
3	37+12.09	53.15' RT.
4	37+57.48	60.30' RT.
5	37+66.34	41.68' RT.
6	39+32.81	40.21' RT.
7	40+40.59	45.96' RT.
8	40+96.22	46.10' RT.
9	41+01.42	55.11' RT.
10	41+51.74	61.16' RT.
11	41+60.25	41.16' RT.
12	42+71.20	38.12' RT.
13	43+27.10	34.11' RT.



NOTE:
 TIES HAVE BEEN DERIVED FROM THE CADD MODEL AND ARE TO BE USED FOR GENERAL LOCATION OF SET CENTERLINE POINTS ONLY. ANY LOST CENTERLINE POINTS ARE TO BE RESET BY APPROPRIATE SURVEY PROCEDURES UTILIZING THE PROVIDED COORDINATES ON THIS SHEET.



VERNON AVE. P.O.L. STA. 33+00.00 VERNON AVE. P.C. STA. 35+19.37 STA. 37+33.92 (¢ VERNON AVE.) = STA. 200+00.00 (¢ BROOKWOOD DR.) BROOKWOOD DR. P.O.L. STA. 200+90.00 VERNON AVE. P.T. STA. 39+36.65 STA. 41+25.09 (¢ VERNON AVE.) = STA. 300+00.00 (¢ KATHLEEN DR.) KATHLEEN DR. P.O.L. STA. 301+00.00 VERNON AVE. P.O.L. STA. 43+35.00

FILE NAME = p:\n0240062\plans\sheets\07layout.dgn
 PLOT DATE = 6/5/2010 5:00:25 PM

DESIGNED - JAJ	REVISED -
DRAWN - DLM	REVISED -
CHECKED - RLH	REVISED -
DATE - 06/2010	REVISED -

STATE OF ILLINOIS
 DEPARTMENT OF TRANSPORTATION

HORIZONTAL ALIGNMENT LAYOUT AND CONTROL

SCALE: 1"=40' SHEET NO. 9 OF 64 SHEETS STA. 34+05.00 TO STA. 43+05.00

F.A.U. RTE.	SECTION	COUNTY	TOTAL SHEETS	SHEET NO.
6354	06-00230-00-BR	MCLEAN	64	9

VERNON AVENUE, TOWN OF NORMAL CONTRACT NO. 91430
 FED. ROAD DIST. NO. 5 ILLINOIS FED. AID PROJECT