

VERNON AVE. EDGE OF PAVEMENT DATA

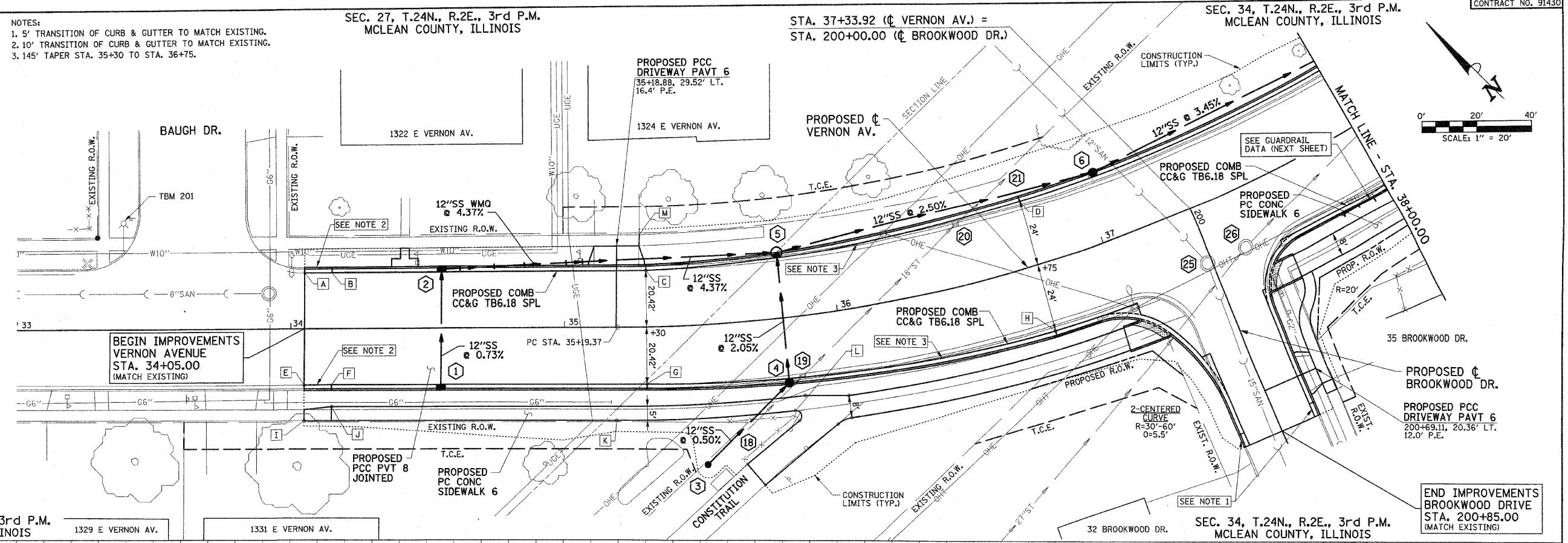
POINT	STATION	OFFSET
A	34+05.00	20.51' LT
B	34+15.00	20.42' LT
C	35+30.00	20.42' LT
D	36+75.00	24.00' LT
E	34+05.00	20.55' RT
F	34+15.00	20.42' RT
G	35+30.00	20.42' RT
H	36+75.00	24.00' RT

VERNON AVE. EDGE OF SIDEWALK DATA

POINT	STATION	OFFSET
I	34+05.00	33.43' RT
J	34+15.00	28.43' RT
K	35+19.37	33.43' RT
L	35+81.07	33.43' RT
M	35+27.64	33.34' RT

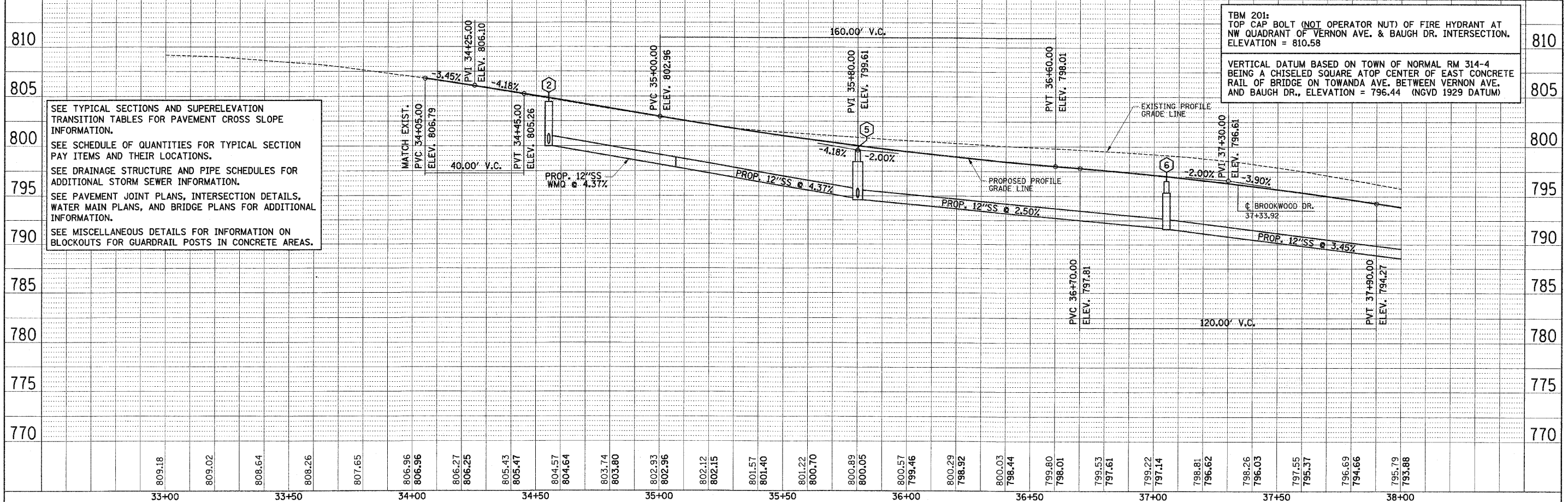
CURVE DATA
 PI STA. = 37+38.84
 Δ = 43° 52' 06" (LT)
 D = 107' 30" 47"
 R = 545.00'
 T = 219.47'
 L = 417.28'
 E = 42.53'
 PC STA. = 35+19.37
 PT STA. = 39+36.65
SUPERELEVATION DATA
 TR STA. = 34+40.00 TO 34+92.50
 SR STA. = 34+92.50 TO 35+45.00
 FS STA. = 35+45.00 TO 38+85.00
 SR STA. = 38+85.00 TO 39+37.50
 TR STA. = 39+37.50 TO 39+90.00

NOTES:
 1. 5' TRANSITION OF CURB & GUTTER TO MATCH EXISTING.
 2. 10' TRANSITION OF CURB & GUTTER TO MATCH EXISTING.
 3. 145' TAPER STA. 35+30 TO STA. 36+75.



PLAN SURVEYED BY DATE
 ALIGNED CHECKED
 RT. OF WAY CHECKED
 PLOT FILE NAME
 NO.

PROFILE SURVEYED BY DATE
 GRADES CHECKED
 PLAN NOTED
 PLOT FILE NAME
 NO.



SEE TYPICAL SECTIONS AND SUPERELEVATION TRANSITION TABLES FOR PAVEMENT CROSS SLOPE INFORMATION.
 SEE SCHEDULE OF QUANTITIES FOR TYPICAL SECTION PAY ITEMS AND THEIR LOCATIONS.
 SEE DRAINAGE STRUCTURE AND PIPE SCHEDULES FOR ADDITIONAL STORM SEWER INFORMATION.
 SEE PAVEMENT JOINT PLANS, INTERSECTION DETAILS, WATER MAIN PLANS, AND BRIDGE PLANS FOR ADDITIONAL INFORMATION.
 SEE MISCELLANEOUS DETAILS FOR INFORMATION ON BLOCKOUTS FOR GUARDRAIL POSTS IN CONCRETE AREAS.

TBM 201: TOP CAP BOLT (NOT OPERATOR NUT) OF FIRE HYDRANT AT NW QUADRANT OF VERNON AVE. & BAUGH DR. INTERSECTION. ELEVATION = 810.58
 VERTICAL DATUM BASED ON TOWN OF NORMAL RM 314-4 BEING A CHISELED SQUARE ATOP CENTER OF EAST CONCRETE RAIL OF BRIDGE ON TOWANDA AVE. BETWEEN VERNON AVE. AND BAUGH DR., ELEVATION = 796.44 (NGVD 1929 DATUM)

FILE NAME = p:\n0240062\plans\sheet10pp.dgn	DESIGNED - JAJ	REVISED -	STATE OF ILLINOIS DEPARTMENT OF TRANSPORTATION	PLAN AND PROFILE		F.A.U. SECTION COUNTY TOTAL SHEETS SHEET NO. 6354 06-00230-00-BR MCLEAN 64 13	
PLOT DATE = 6/5/2010 5:00:31 PM	DRAWN - DLM	REVISED -		SCALE: 1"=20'	SHEET NO. 13 OF 64 SHEETS	STA. 34+05.00 TO STA. 38+00.00	VERNON AVENUE, TOWN OF NORMAL CONTRACT NO. 91430
	CHECKED - RLH	REVISED -					FED. ROAD DIST. NO. 5 ILLINOIS FED. AID PROJECT
	DATE - 06/2010	REVISED -					