

CURVE DATA
 PI STA. = 37+38.84
 Δ = 43° 52' 06" (LT)
 D = 10° 30' 47"
 T = 545.00'
 L = 219.47'
 E = 417.28'
 SE = 2%

SUPERELEVATION DATA
 TR STA. = 34+40.00 TO 34+92.50
 SR STA. = 34+92.50 TO 35+45.00
 FS STA. = 35+45.00 TO 38+85.00
 SR STA. = 38+85.00 TO 39+37.50
 TR STA. = 39+37.50 TO 39+90.00

VERNON AVE. EDGE OF PAVEMENT DATA			VERNON AVE. EDGE OF SIDEWALK DATA		
POINT	STATION	OFFSET	POINT	STATION	OFFSET
A	39+12.00	24.00' LT	L	38+30.89	30.50' RT
B	39+36.65	24.00' LT	M	39+12.00	29.54' RT
C	39+77.94	24.00' LT	N	39+23.02	37.27' RT
D	39+12.00	24.00' RT	S	42+75.00	27.80' RT
E	39+30.26	24.00' RT			

VERNON AVE. CENTERLINE POINTS		
POINT	STATION	OFFSET
H	40+94.06	24.00' RT
I	41+60.00	24.00' RT
J	43+05.00	20.61' LT
K	43+05.00	20.67' RT
T	42+95.00	20.83' LT
U	42+95.00	20.83' RT

GUARDRAIL DATA

TRAF BAR TERM T1 SPL TAN = 2 EACH
 37+82.55, 26.5' RT. TO 38+30.28, 25.5' RT.
 41+71.64, 25.8' LT. TO 42+21.63, 25.1' LT.

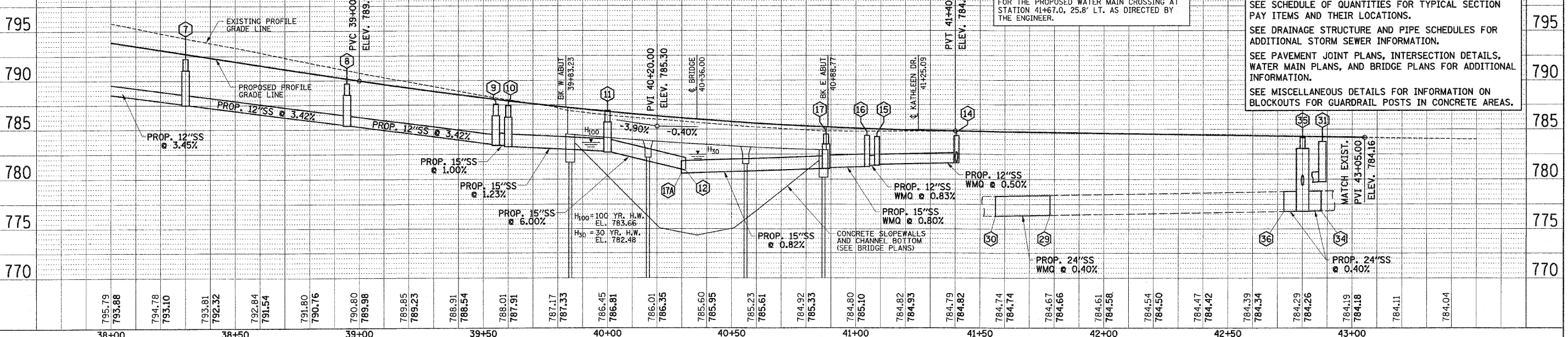
SPBGR TYA SPL = 75 FOOT
 38+30.28, 25.5' RT. TO 39+01.93, 25.6' RT.
 39+01.93, 25.6' RT. TO 39+45.94, 25.6' RT.
 41+25.99, 25.6' LT. TO 41+71.64, 25.8' LT.

NOTE: GUARDRAIL CONSTRUCTED ON A CURVE SHALL BE INSTALLED AT A RADIUS EQUAL TO THE ADJACENT FACE OF CURB RADIUS UNLESS OTHERWISE DIRECTED BY THE ENGINEER.

NOTE: ADJUST THE GUARDRAIL POST LOCATIONS FOR THE PROPOSED WATER MAIN CROSSING AT STATION 41+67.0, 25.8' LT. AS DIRECTED BY THE ENGINEER.

TBM 200: TOP CAP BOLT (NOT OPERATOR NUT) OF FIRE HYDRANT AT SW QUADRANT OF VERNON AVE. & KATHLEEN DR. INTERSECTION. ELEVATION = 786.99

VERTICAL DATUM BASED ON TOWN OF NORMAL RM 314-4 BEING A CHISELED SQUARE ATOP CENTER OF EAST CONCRETE RAIL OF BRIDGE ON TOWANDA AVE. BETWEEN VERNON AVE. AND BAUGH DR., ELEVATION = 796.44 (NGVD 1929 DATUM)



FILE NAME = P:\N0240062\Plans\Sheets\110pp.dgn	DESIGNED - JAJ	REVISD -	STATE OF ILLINOIS DEPARTMENT OF TRANSPORTATION	PLAN AND PROFILE	F.A.U. SECTION COUNTY TOTAL SHEETS SHEET NO.
PLOT DATE = 6/8/2010 4:11:24 PM	DRAWN - DLM	REVISD -			6354 06-00230-00-BR MCLEAN 64 14
	CHECKED - RLH	REVISD -			VERNON AVENUE, TOWN OF NORMAL CONTRACT NO. 91430
	DATE - 06/2010	REVISD -			FED. ROAD DIST. NO. 5 ILLINOIS FED. AID PROJECT