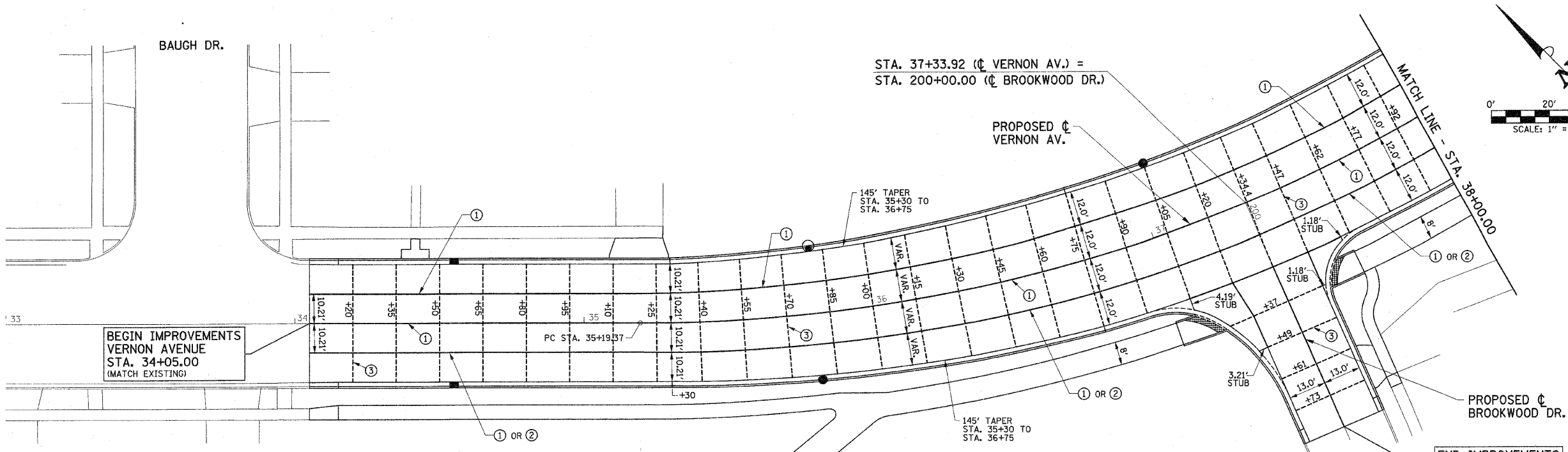


**CURVE DATA**  
 PI STA. = 37+38.84  
 Δ = 43° 52' 06" (LT)  
 D = 10° 30' 47"  
 R = 545.00'  
 T = 219.47'  
 L = 417.28'  
 E = 42.53'  
 SE = 2%  
 PC STA. = 35+19.37  
 PT STA. = 39+36.65

**SUPERELEVATION DATA**  
 TR STA. = 34+40.00 TO 34+92.50  
 SR STA. = 34+92.50 TO 35+45.00  
 FS STA. = 35+45.00 TO 38+85.00  
 SR STA. = 38+85.00 TO 39+37.50  
 TR STA. = 39+37.50 TO 39+90.00



BEGIN IMPROVEMENTS  
 VERNON AVENUE  
 STA. 34+05.00  
 (MATCH EXISTING)

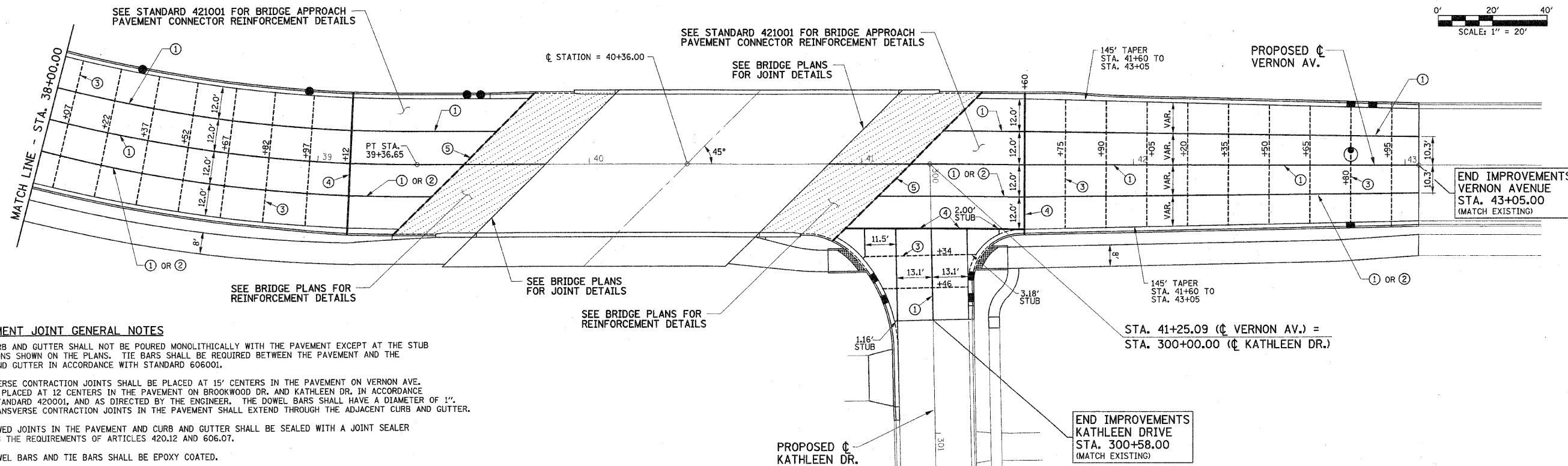
END IMPROVEMENTS  
 BROOKWOOD DRIVE  
 STA. 200+85.00  
 (MATCH EXISTING)

**PAVEMENT JOINT KEY**

- ① LONGITUDINAL CONSTRUCTION JOINT WITH NO. 6 x 24" EPOXY COATED TIE BARS GROUTED IN PLACE OR NO. 6 x 30" EPOXY COATED TIE BARS FORMED IN PLACE AT 24" CENTERS (STD. 420001)
- ② LONGITUDINAL SAWED JOINT WITH NO. 6 x 30" EPOXY COATED TIE BARS AT 30" CENTERS (STD. 420001)
- ③ TRANSVERSE CONTRACTION JOINT WITH 1" DIAMETER x 18" EPOXY COATED DOWEL BARS AT 12" CENTERS (STD. 420001)
- ④ 2" TRANSVERSE EXPANSION JOINT WITH 1" DIAMETER x 18" EPOXY COATED DOWEL BARS AT 12" CENTERS (STD. 420001)
- ⑤ 4" PREFORMED JOINT SEAL (SEE BRIDGE PLANS FOR DETAIL A OF BRIDGE APPROACH SLAB DETAILS)

**PAVEMENT JOINT LEGEND**

- PROPOSED 2" EXPANSION JOINT
- PROPOSED LONGITUDINAL JOINT
- - - PROPOSED SAWED CONTRACTION JOINT
- OR ○ PROPOSED INLET
- PROPOSED MANHOLE
- ▨ PROPOSED BRIDGE APPROACH PAVEMENT



SEE STANDARD 421001 FOR BRIDGE APPROACH PAVEMENT CONNECTOR REINFORCEMENT DETAILS

SEE STANDARD 421001 FOR BRIDGE APPROACH PAVEMENT CONNECTOR REINFORCEMENT DETAILS

**PAVEMENT JOINT GENERAL NOTES**

1. THE CURB AND GUTTER SHALL NOT BE POURED MONOLITHICALLY WITH THE PAVEMENT EXCEPT AT THE STUB LOCATIONS SHOWN ON THE PLANS. TIE BARS SHALL BE REQUIRED BETWEEN THE PAVEMENT AND THE CURB AND GUTTER IN ACCORDANCE WITH STANDARD 606.00.
2. TRANSVERSE CONTRACTION JOINTS SHALL BE PLACED AT 15' CENTERS IN THE PAVEMENT ON VERNON AVE. AND BE PLACED AT 12' CENTERS IN THE PAVEMENT ON BROOKWOOD DR. AND KATHLEEN DR. IN ACCORDANCE WITH STANDARD 420001, AND AS DIRECTED BY THE ENGINEER. THE DOWEL BARS SHALL HAVE A DIAMETER OF 1". ALL TRANSVERSE CONTRACTION JOINTS IN THE PAVEMENT SHALL EXTEND THROUGH THE ADJACENT CURB AND GUTTER.
3. ALL SAWED JOINTS IN THE PAVEMENT AND CURB AND GUTTER SHALL BE SEALED WITH A JOINT SEALER MEETING THE REQUIREMENTS OF ARTICLES 420.12 AND 606.07.
4. ALL DOWEL BARS AND TIE BARS SHALL BE EPOXY COATED.

FILE NAME = p:\n0240062\plans\sheet\13joint.dgn	DESIGNED - JAJ	REVISED -	STATE OF ILLINOIS DEPARTMENT OF TRANSPORTATION	<b>PAVEMENT JOINT PLANS</b>		F.A.U. RTE. 6354	SECTION 06-00230-00-BR	COUNTY MCLEAN	TOTAL SHEETS 64	SHEET NO. 20	
PLOT DATE = 6/5/2010 5:00:40 PM	DRAWN - DLM	REVISED -		SCALE : 1"=20'	SHEET NO. 20 OF 64 SHEETS	STA. 34+05.00 TO STA. 43+05.00	VERNON AVENUE, TOWN OF NORMAL, CONTRACT NO. 91430				
	CHECKED - RLH	REVISED -		FED. ROAD DIST. NO. 5 ILLINOIS FED. AID PROJECT							
	DATE - 06/2010	REVISED -									