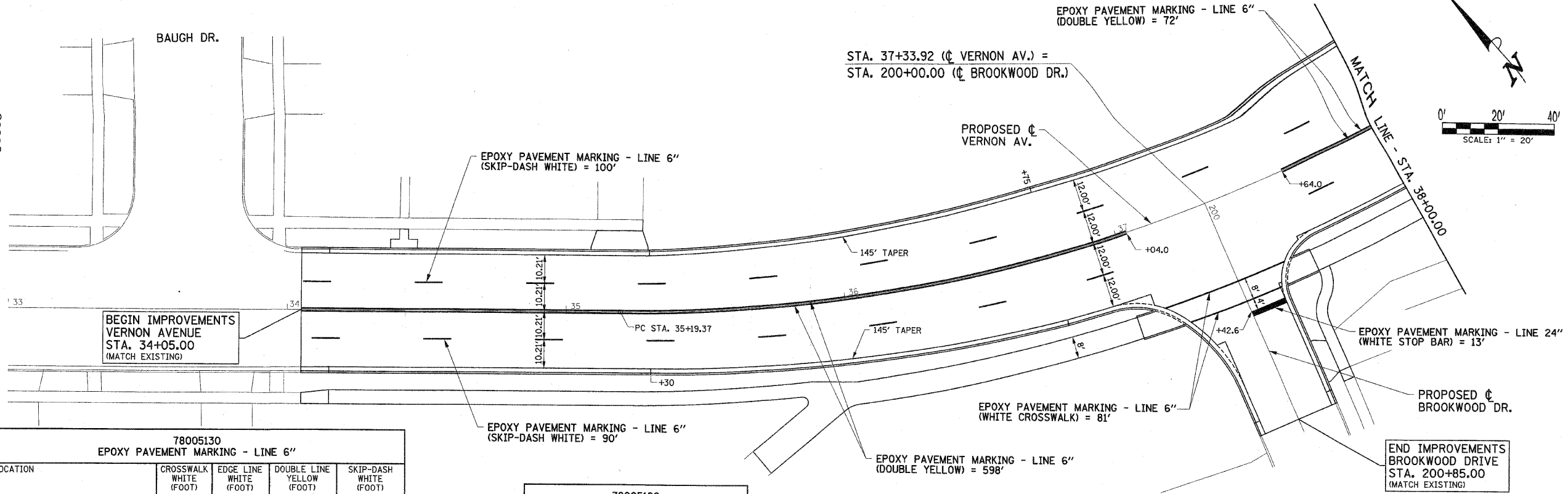


CURVE DATA
 PT STA. = 37+38.84
 Δ = 43° 52' 06" (LT)
 D = 10° 30' 47"
 R = 545.00'
 T = 219.47'
 L = 417.28'
 E = 42.53'
 SE = 2%
 PC STA. = 35+19.37
 PT STA. = 39+36.65

SUPERELEVATION DATA
 TR STA. = 34+40.00 TO 34+92.50
 SR STA. = 34+92.50 TO 35+45.00
 FS STA. = 35+45.00 TO 38+85.00
 SR STA. = 38+85.00 TO 39+37.50
 TR STA. = 39+37.50 TO 39+90.00

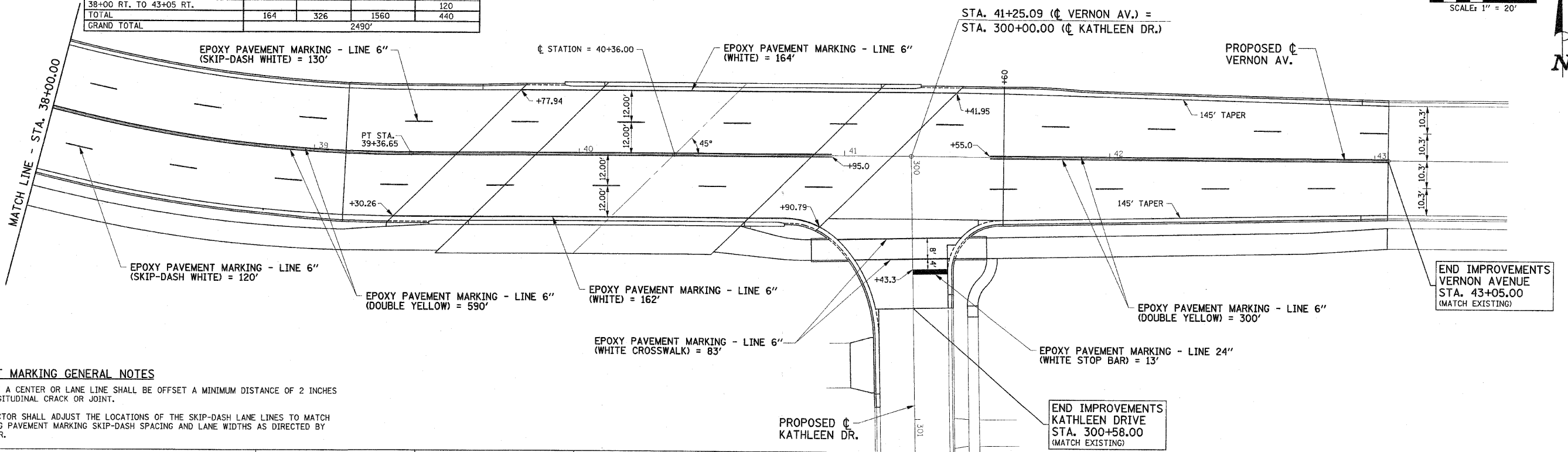


78005130
EPOXY PAVEMENT MARKING - LINE 6"

| LOCATION | CROSSWALK WHITE (FOOT) | EDGE LINE WHITE (FOOT) | DOUBLE LINE YELLOW (FOOT) | SKIP-DASH WHITE (FOOT) |
|------------------------------|------------------------|------------------------|---------------------------|------------------------|
| BROOKWOOD DR. | 81 | | | |
| KATHLEEN DR. | 83 | | | |
| 39+30.26 RT. TO 40+90.79 RT. | | 162 | | |
| 39+77.94 LT. TO 41+41.95 LT. | | 164 | | |
| 34+05 TO 37+04 | | | 598 | |
| 37+64 TO 38+00 | | | 72 | |
| 38+00 TO 40+95 | | | 590 | |
| 41+55 TO 43+05 | | | 300 | |
| 34+05 LT. TO 38+00 LT. | | | | 100 |
| 34+05 RT. TO 38+00 RT. | | | | 90 |
| 38+00 LT. TO 43+05 LT. | | | | 130 |
| 38+00 RT. TO 43+05 RT. | | | | 120 |
| TOTAL | 164 | 326 | 1560 | 440 |
| GRAND TOTAL | | | 2490' | |

78005180
EPOXY PAVEMENT MARKING - LINE 24"

| LOCATION | STOP BAR WHITE (FOOT) |
|------------------------------|-----------------------|
| 200+42.6 LT. (BROOKWOOD DR.) | 13 |
| 300+43.3 LT. (KATHLEEN DR.) | 13 |
| TOTAL | 26 |



- PAVEMENT MARKING GENERAL NOTES**
1. THE EDGE OF A CENTER OR LANE LINE SHALL BE OFFSET A MINIMUM DISTANCE OF 2 INCHES FROM A LONGITUDINAL CRACK OR JOINT.
 2. THE CONTRACTOR SHALL ADJUST THE LOCATIONS OF THE SKIP-DASH LANE LINES TO MATCH THE EXISTING PAVEMENT MARKING SKIP-DASH SPACING AND LANE WIDTHS AS DIRECTED BY THE ENGINEER.

FILE NAME = p:\n0240062\plans\sheet\15\marking.dgn
 PLOT DATE = 6/5/2010 5:00:44 PM

| | |
|----------------|-----------|
| DESIGNED - JAJ | REVISED - |
| DRAWN - DLM | REVISED - |
| CHECKED - RLH | REVISED - |
| DATE - 06/2010 | REVISED - |

STATE OF ILLINOIS
DEPARTMENT OF TRANSPORTATION

PAVEMENT MARKING PLANS

SCALE: 1"=20' SHEET NO. 23 OF 64 SHEETS STA. 34+05.00 TO STA. 43+05.00

| F.A.U. RTE. | SECTION | COUNTY | TOTAL SHEETS | SHEET NO. |
|-------------|----------------|--------|--------------|-----------|
| 6354 | 06-00230-00-BR | MCLEAN | 64 | 23 |

VERNON AVENUE, TOWN OF NORMAL CONTRACT NO. 91430
 FED. ROAD DIST. NO. 5 [ILLINOIS] FED. AID PROJECT