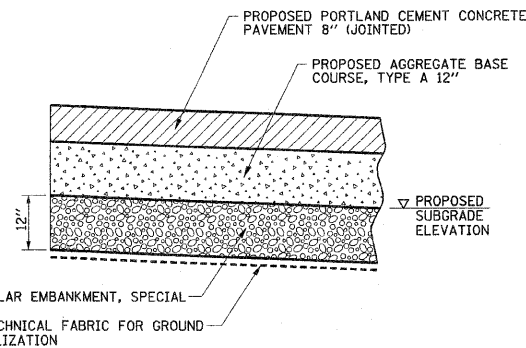


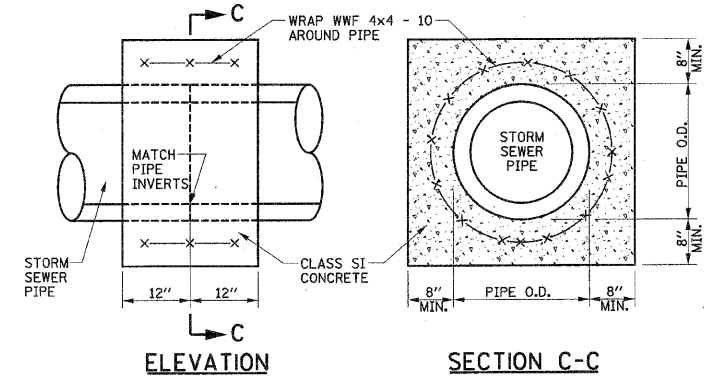
- NOTES:
1. THE CLSM SHALL BE PLACED IN LIFTS AS DESCRIBED IN SECTION 593 OF THE STANDARD SPECIFICATIONS.
  2. THE APPLICABLE ARTICLES OF SECTION 550 OF THE STANDARD SPECIFICATIONS SHALL APPLY FOR EXCAVATION, BEDDING, AND INSTALLATION OF STORM SEWERS.
  3. THE SAND BEDDING SHALL BE CONSIDERED INCLUDED IN THE COST OF THE CLSM AND NO ADDITIONAL COMPENSATION WILL BE ALLOWED.
  4. THE CLSM WILL BE PAID FOR IN ACCORDANCE WITH SECTION 593 OF THE STANDARD SPECIFICATIONS AND INCLUDES PAYMENT FOR THE MATERIAL TO THE TOP OF THE SAND BEDDING AS SHOWN ON THE DETAIL.

**CONTROLLED LOW-STRENGTH MATERIAL DETAIL**



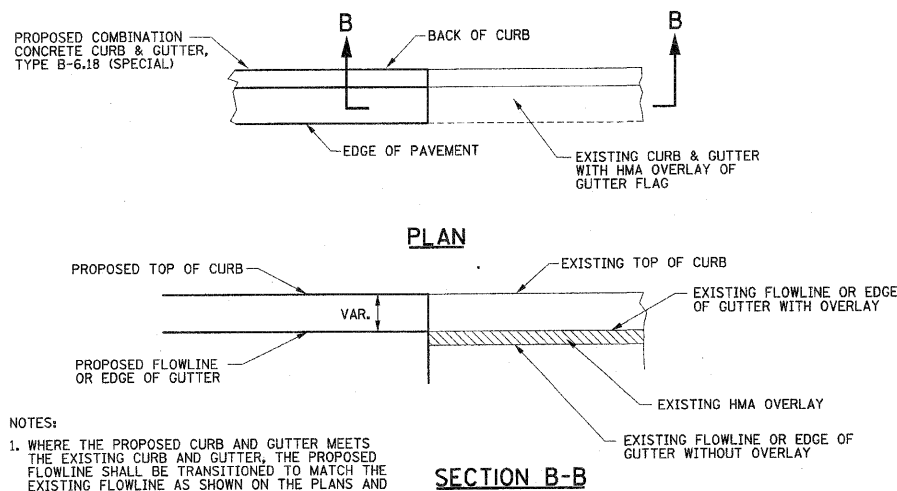
- NOTES:
1. THIS WORK SHALL BE CONSTRUCTED AT LOCATIONS AS DIRECTED BY THE ENGINEER. SEE PROPOSED TYPICAL SECTION GENERAL NOTE 11 FOR ADDITIONAL INFORMATION.
  2. THE WORK SHALL BE IN ACCORDANCE WITH SECTION 210 OF THE STANDARD SPECIFICATIONS. THE GRANULAR EMBANKMENT, SPECIAL WILL BE PAID FOR AT THE CONTRACT UNIT PRICE PER TON. THE GEOTECHNICAL FABRIC FOR GROUND STABILIZATION WILL BE PAID FOR AT THE CONTRACT UNIT PRICE PER SQUARE YARD. THE EARTH REMOVAL BELOW THE PROPOSED SUBGRADE ELEVATION LINE WILL BE PAID FOR AS REMOVAL AND DISPOSAL OF UNSUITABLE MATERIAL.

**SUBGRADE REMOVAL AND REPLACEMENT DETAIL**



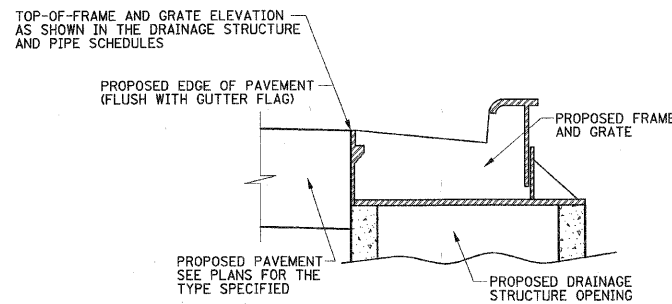
- NOTES:
1. THE CONCRETE COLLARS SHALL BE UTILIZED WHERE CONNECTING STORM SEWERS OF DIFFERENT TYPES OR AS DIRECTED BY THE ENGINEER. THE COST OF CONSTRUCTING THE CONCRETE COLLARS WILL BE PAID FOR AT THE CONTRACT UNIT PRICE EACH FOR CONCRETE COLLAR.

**CONCRETE COLLAR DETAIL**



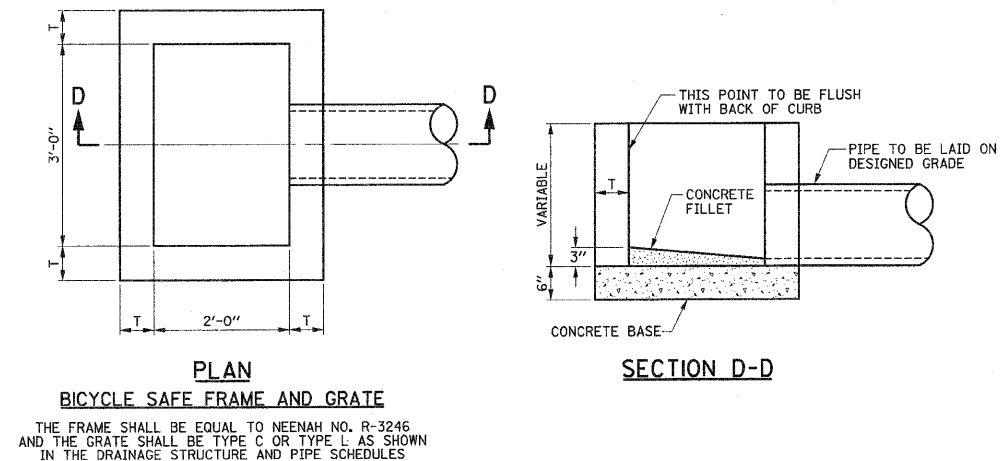
- NOTES:
1. WHERE THE PROPOSED CURB AND GUTTER MEETS THE EXISTING CURB AND GUTTER, THE PROPOSED FLOWLINE SHALL BE TRANSITIONED TO MATCH THE EXISTING FLOWLINE AS SHOWN ON THE PLANS AND AS DIRECTED BY THE ENGINEER.

**GUTTER FLAG DETAIL**  
EXISTING GUTTER FLAG WITH HMA OVERLAY AND PROPOSED GUTTER FLAG WITHOUT HMA OVERLAY



- NOTES:
1. THIS DETAIL SHALL BE APPLICABLE FOR PROPOSED FRAMES AND GRATES PLACED WITHIN COMBINATION CONCRETE CURB AND GUTTER, TYPE B-6.18 (SPECIAL).
  2. THE TOP-OF-FRAME ELEVATIONS SHOWN IN THE DRAINAGE STRUCTURE AND PIPE SCHEDULES ARE THE SAME AS THE EDGE OF PAVEMENT ELEVATIONS FOR PCC PAVEMENTS.
  3. CONCRETE FILLETS SHALL BE PLACED AT THE CORNERS OF THE FRAME TO FILL THE VOIDS BETWEEN THE FRAME AND THE DRAINAGE STRUCTURE AS DIRECTED BY THE ENGINEER. THIS WORK SHALL BE INCLUDED IN THE COST OF THE PROPOSED DRAINAGE STRUCTURE.

**DRAINAGE STRUCTURE FRAME AND GRATE DETAIL**



MATERIALS PERMITTED FOR INLETS	T
PRECAST REINFORCED CONCRETE SECTIONS	3"
CAST-IN-PLACE CONCRETE	6"

**INLETS, SPECIAL, TYPE H DETAIL**

FILE NAME = P:\NO240062\Plans\Sheets\17details.dgn  
PLOT DATE = 6/5/2010 11:41:18 AM

DESIGNED - JAJ	REVISED -
DRAWN - DLM	REVISED -
CHECKED - RLH	REVISED -
DATE - 06/2010	REVISED -

STATE OF ILLINOIS  
DEPARTMENT OF TRANSPORTATION

MISCELLANEOUS DETAILS

SCALE : NONE SHEET NO. 28 OF 64 SHEETS STA. 34+05.00 TO STA. 43+05.00

F.A.U. RTE.	SECTION	COUNTY	TOTAL SHEETS	SHEET NO.
6354	06-00230-00-BR	MCLEAN	64	28
VERNON AVENUE, TOWN OF NORMAL CONTRACT NO. 91430				
FED. ROAD DIST. NO. 5 ILLINOIS FED. AID PROJECT				