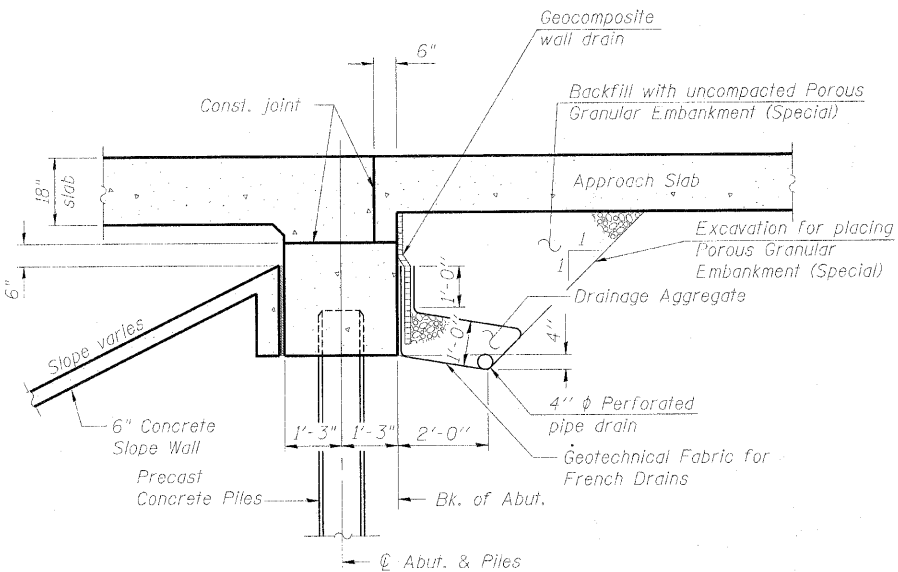


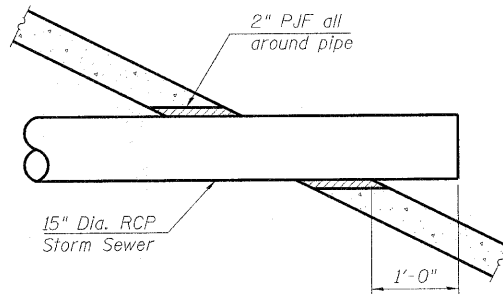
STATE OF ILLINOIS  
DEPARTMENT OF TRANSPORTATION

**GENERAL NOTES**

1. Reinforcement bars shall conform to the requirements of ASTM A 706 Gr 60. See Special Provisions.
2. Reinforcement bars designated (E) shall be epoxy coated.
3. Plan dimensions and details relative to existing plans are subject to nominal construction variations. The Contractor shall field verify existing dimensions and details affecting new construction and make necessary approved adjustments prior to construction or ordering of materials. Such variations shall not be cause for additional compensation for a change in scope of the work, however, the Contractor will be paid for the quantity actually furnished at the unit price bid for the work.
4. The Contractor shall make allowance for the deflection of forms, shrinkage and settlement of falsework, in addition to allowance for dead load deflection. Forms for deck slab shall be removed prior to placement of bridge approach slab.
5. Removal of Existing Structure is not for complete removal of the entire existing bridge. Removal includes the entire superstructure, wingwalls, and cutting the tops of the pier piles to the required elevations.
6. The existing precast concrete piles were driven to a minimum of 30 tons at the abutments and 40 tons at the piers for design service loads. New piles shall be driven to required capacity based on LRFD design loads.
7. As an alternative, piles and test piles may be 14" square Precast Prestressed Concrete Piles at no additional cost.
8. Existing Name Plate shall be cleaned and relocated next to new Name Plate. Cost included with Name Plates.
9. Slip forming of parapets is not allowed.



**SECTION THRU ABUTMENT**  
(Horiz. dim's at Rt. L's)



**SLOPE WALL DETAIL AT STORM SEWER OUTLET**  
(Typ. 2 Places)

**INDEX OF SHEETS**

1. General Plan and Elevation
2. General Notes and Bill of Material
3. Slope Wall and Channel Details
4. Stage Construction Details
5. Top of Slab Elevations
6. Top of Approach Slab Elevations
7. Superstructure (1 of 2)
8. Superstructure (2 of 2)
9. Superstructure Cross Sections
10. Superstructure Details
11. Superstructure Bill of Material
12. West Approach Slab Details (1 of 2)
13. West Approach Slab Details (2 of 2)
14. East Approach Slab Details (1 of 2)
15. East Approach Slab Details (2 of 2)
16. Bicycle and Parapet Rail Details
17. Drainage Scupper, DS-11
18. West Abutment
19. East Abutment
20. Pier No. 1
21. Pier No. 2
22. Pile Details
23. Temporary Concrete Barrier
24. Bar Splicer Details
25. Soil Boring Logs (Sheet 1 of 2)
26. Soil Boring Logs (Sheet 2 of 2)

**TOTAL BILL OF MATERIAL**

ITEM	UNIT	SUPER	SUB	TOTAL
Channel Excavation	Cu. Yd.		50	50
Porous Granular Embankment, Special	Cu. Yd.		114	114
Removal of Existing Structure	EACH	1		1
Slope Wall Removal	Sq. Yd.		188	188
Structure Excavation	Cu. Yd.		104	104
Concrete Structures	Cu. Yd.		100.8	100.8
Concrete Superstructure	Cu. Yd.	597.2		597.2
Bridge Deck Grooving	Sq. Yd.	894		894
Protective Coat, Special	Sq. Yd.	1,250		1,250
Reinforcement Bars, Epoxy Coated	Pound	130,930	16,840	147,770
Bar Splicers	Each	504	94	598
Bicycle Railing, Special	Foot	162		162
Parapet Railing, Special	Foot	133		133
Slope Wall 6 Inch	Sq. Yd.		370	370
Furnishing Precast Concrete Piles 14"	Foot		301	301
Driving Piles	Foot		301	301
Test Piles Precast Concrete	Each		2	2
Temporary Sheet Piling	Sq. Ft.		170	170
Name Plates	Each	1		1
Geocomposite Wall Drain	Sq. Yd.		87	87
Pipe Underdrain For Structures 4"	Foot		232	232
Slope Wall Crack Sealing	Foot		400	400
Drainage Scuppers, DS-11	Each	4		4
Underwater Structure Excavation Protection - Location 1	Each		1	1
Underwater Structure Excavation Protection - Location 2	Each		1	1
Asbestos Bearing Pad Removal	Each	4		4

**GENERAL NOTES &  
BILL OF MATERIAL  
STRUCTURE NO. 057-7800**

DESIGNED	SMM
CHECKED	MAES
DRAWN	SMM
CHECKED	MAES

SHEET NO. 2	F.A.U. RTE.	SECTION	COUNTY	TOTAL SHEETS	SHEET NO.
	6354	06-002300-00-BR	MCLEAN	64	31
26 SHEETS	SN 057-7800		CONTRACT NO. 91430		
	FED. ROAD DIST. NO. 5 ILLINOIS FED. AID PROJECT				