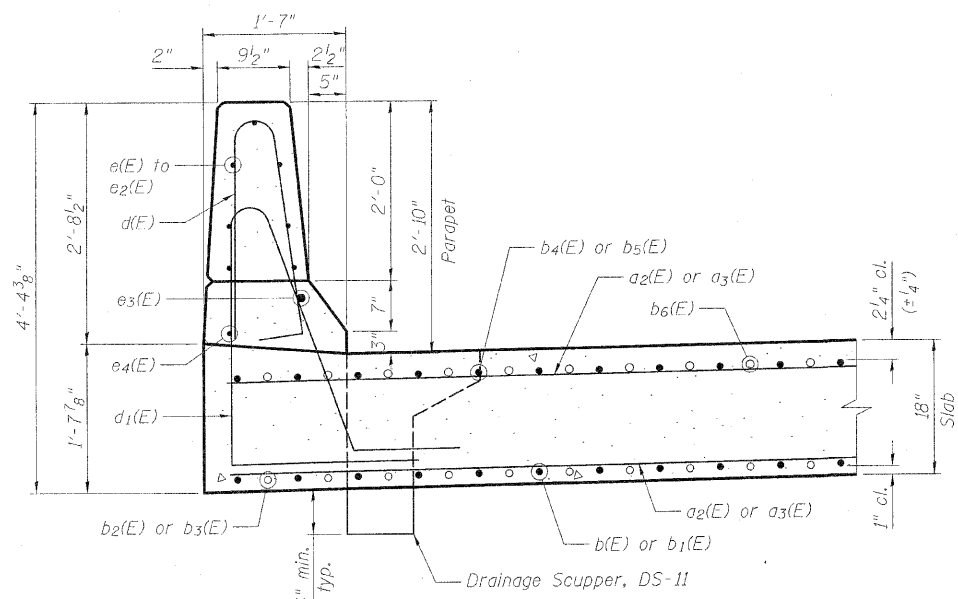
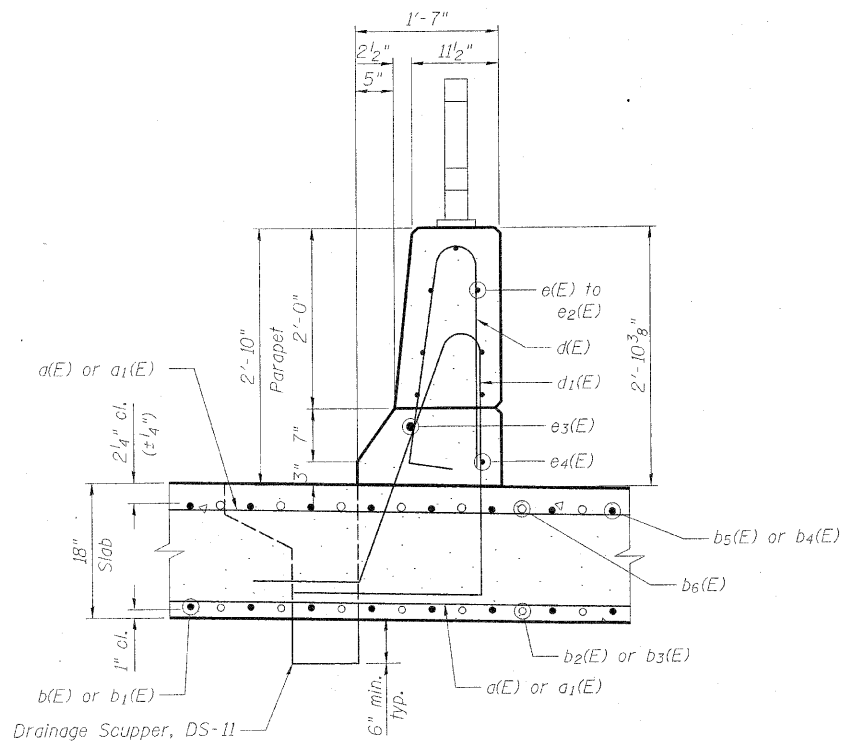


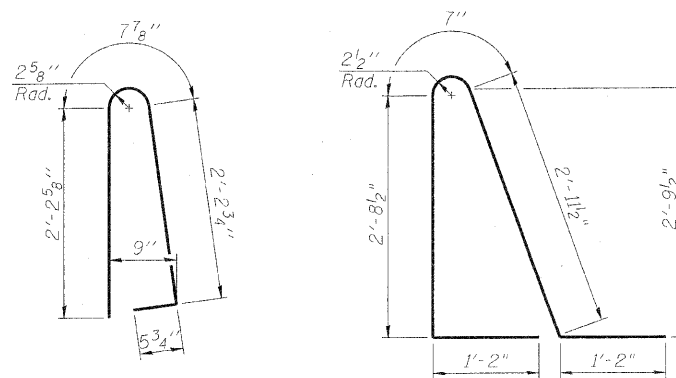
STATE OF ILLINOIS  
DEPARTMENT OF TRANSPORTATION



SECTION THRU NORTH PARAPET

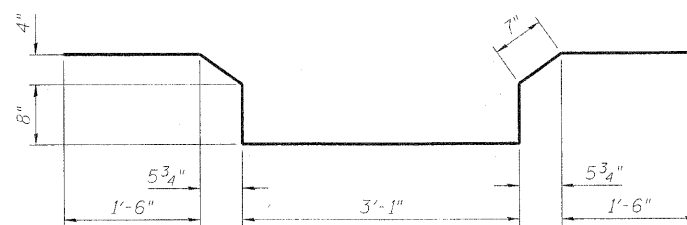


SECTION THRU SOUTH PARAPET

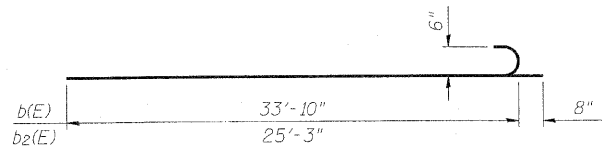


BAR d(E)

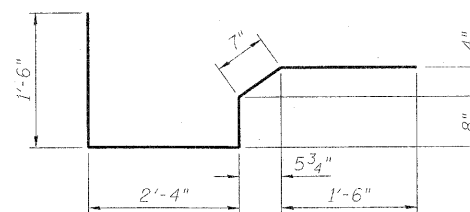
BAR d1(E)



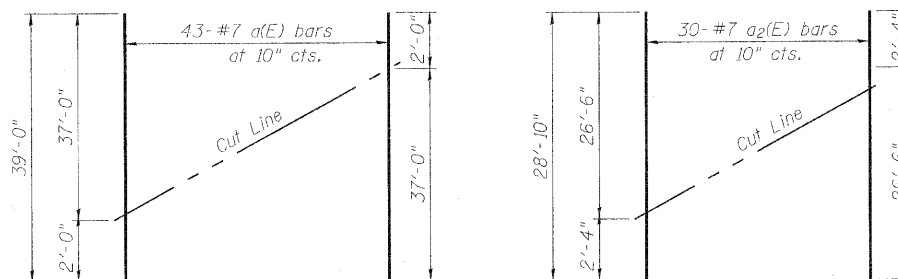
BAR s1(E)



BAR b(E) or b2(E)



BAR s(E)



FIELD CUTTING DIAGRAMS

Order a(E) and a2(E) bars full length. Cut as shown and use remainder of bars on opposite end of slab on the same stage of construction.

SUPERSTRUCTURE  
BILL OF MATERIAL

| Bar   | No. | Size | Length  | Shape |
|-------|-----|------|---------|-------|
| a(E)  | 86  | #7   | 39'-0"  | —     |
| a1(E) | 160 | #7   | 37'-9"  | —     |
| a2(E) | 60  | #7   | 28'-10" | —     |
| a3(E) | 184 | #7   | 26'-9"  | —     |
| a4(E) | 24  | #5   | 28'-4"  | —     |
| a5(E) | 12  | #5   | 37'-10" | —     |
| a6(E) | 32  | #5   | 1'-6"   | —     |
| b(E)  | 196 | #6   | 34'-6"  | —     |
| b1(E) | 98  | #6   | 42'-6"  | —     |
| b2(E) | 192 | #6   | 25'-11" | —     |
| b3(E) | 96  | #6   | 25'-4"  | —     |
| b4(E) | 196 | #5   | 18'-2"  | —     |
| b5(E) | 196 | #6   | 38'-7"  | —     |
| b6(E) | 192 | #8   | 19'-1"  | —     |
| d(E)  | 228 | #5   | 5'-7"   | ▲     |
| d1(E) | 228 | #5   | 8'-7"   | ▲     |
| e(E)  | 56  | #4   | 11'-9"  | —     |
| e1(E) | 28  | #4   | 16'-4"  | —     |
| e2(E) | 28  | #4   | 11'-1"  | —     |
| e3(E) | 6   | #8   | 39'-2"  | —     |
| e4(E) | 6   | #4   | 36'-4"  | —     |
| s(E)  | 130 | #4   | 6'-7"   | └     |
| s1(E) | 130 | #4   | 8'-7"   | └     |

|                                     |          |        |
|-------------------------------------|----------|--------|
| Reinforcement Bars,<br>Epoxy Coated | Pound    | 92,820 |
| Concrete<br>Superstructure          | Cu. Yds. | 423.0  |

Bars indicated thus 1 x 2-#5 etc. indicates 1 line of bars with 2 lengths per line.

SUPERSTRUCTURE  
BILL OF MATERIAL  
STRUCTURE NO. 057-7800

|          |      |
|----------|------|
| DESIGNED | SMM  |
| CHECKED  | MAES |
| DRAWN    | SMM  |
| CHECKED  | MAES |

| SHEET NO. 11                                    | F.A.U. RTE. | SECTION         | COUNTY             | TOTAL SHEETS | SHEET NO. |
|---|-------------|-----------------|--------------------|--------------|-----------|
| 26 SHEETS                                       | 6354        | 06-002300-00-BR | MCLEAN             | 64           | 40        |
| SN 057-7800                                     |             |                 | CONTRACT NO. 91430 |              |           |
| FED. ROAD DIST. NO. 5 ILLINOIS FED. AID PROJECT |             |                 |                    |              |           |