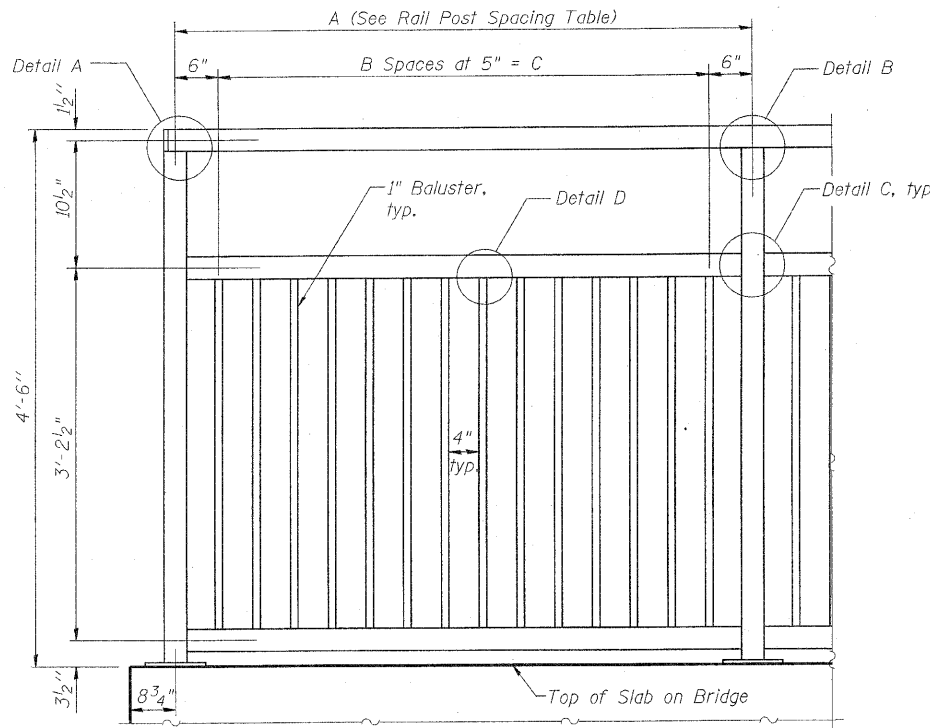
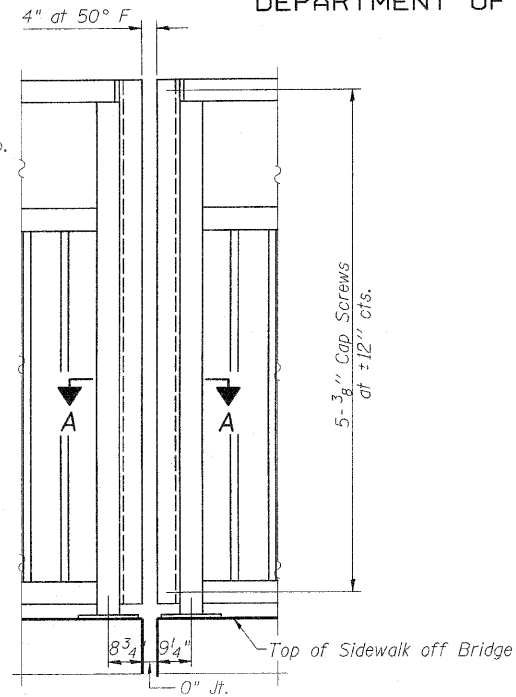


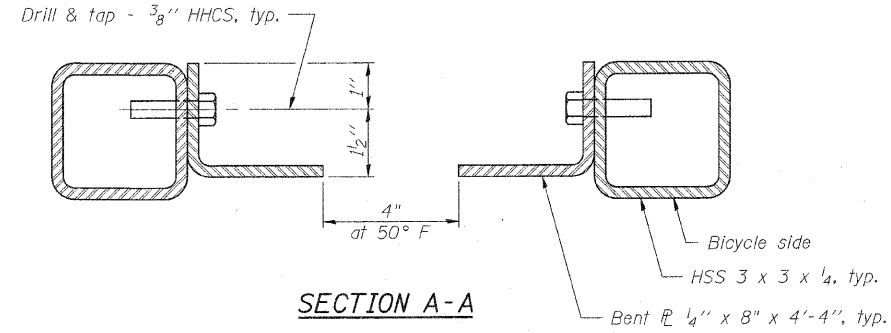
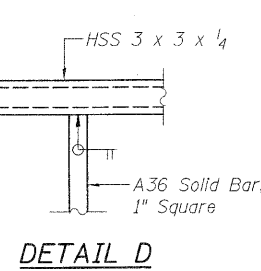
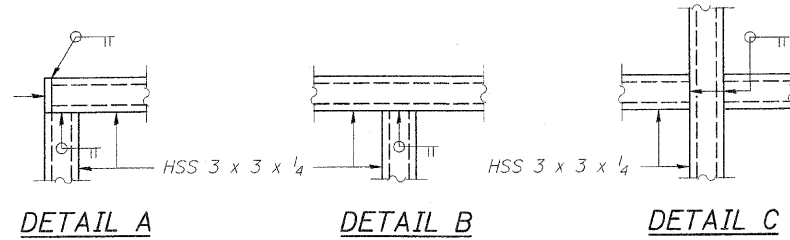
STATE OF ILLINOIS
DEPARTMENT OF TRANSPORTATION



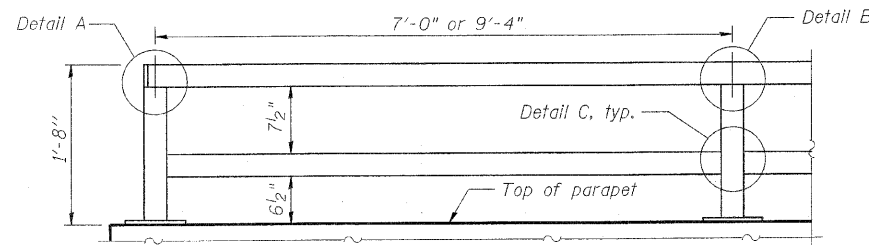
BICYCLE RAILING



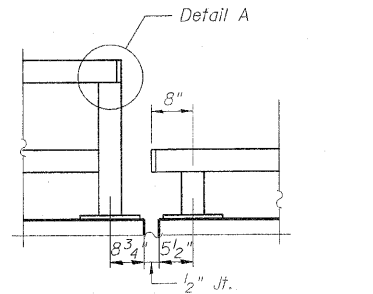
BICYCLE RAILING



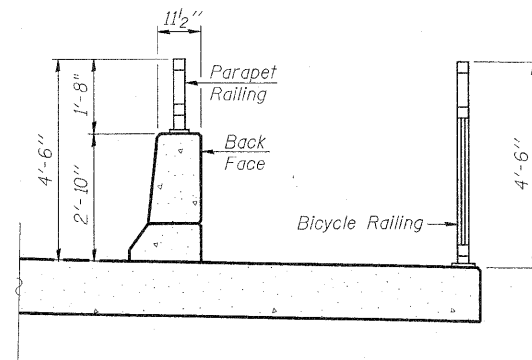
Note:
All post, railing, splices, anchor devices, and bent plates shall be galvanized and painted. See Special Provisions.



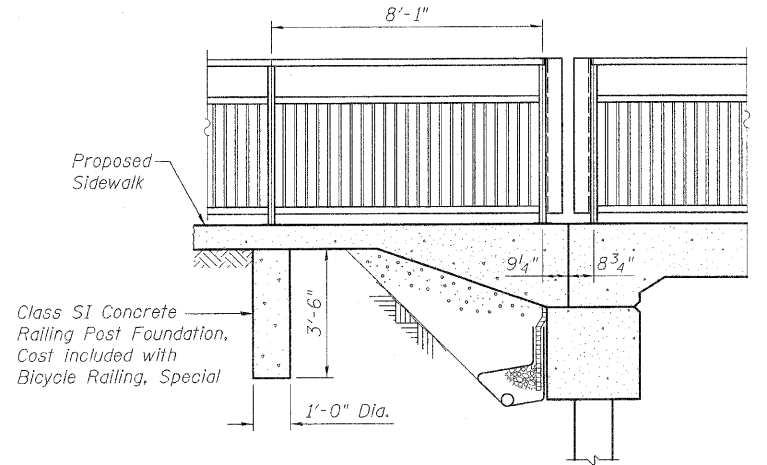
**PARAPET RAILING
ELEVATION
(Inside Face)**



**PARAPET RAILING
ELEVATION AT EXPANSION JOINT
(Inside Face)**



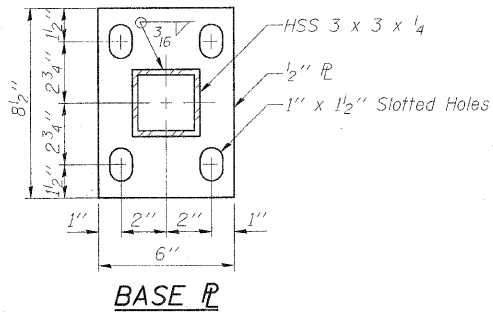
SECTION THRU BRIDGE SLAB



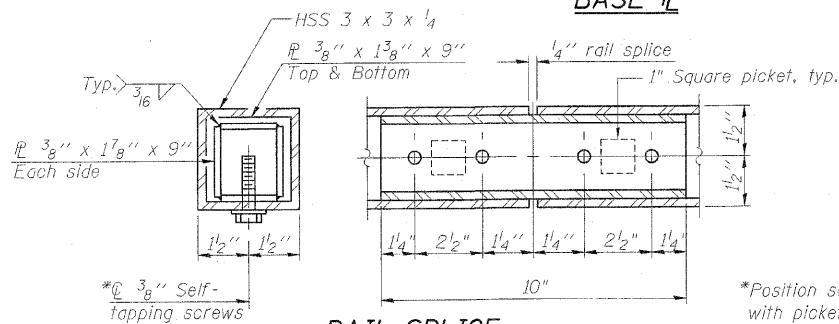
BICYCLE RAILING AT BRIDGE ABUTMENT DETAIL

RAIL POST SPACING TABLE

A (Post Spacing)	B (Spaces)	C
8'-1"	17	7'-1"
9'-4"	20	8'-4"

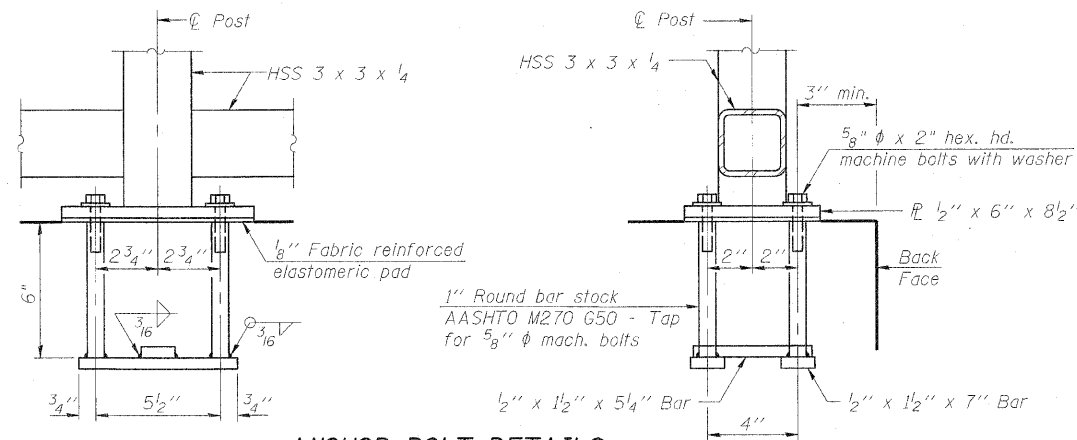


BASE PL



RAIL SPLICE

*Position screws not to interfere with pickets.



ANCHOR BOLT DETAILS

In lieu of the cast-in-place anchor device shown, the Contractor has the option of drilling and setting 5/8" ϕ anchor rods according to Article 509.06 of the Standard Specifications. Embedment shall be according to the manufacturer's specifications.

BILL OF MATERIAL

Item	Unit	Quantity
Bicycle Railing, Special	Foot	162
Parapet Railing, Special	Foot	133

**BICYCLE AND
PARAPET RAIL DETAILS
STRUCTURE NO. 057-7800**

DESIGNED	SMM
CHECKED	MAES
DRAWN	SMM
CHECKED	MAES

SHEET NO.16	F.A.U. RTE.	SECTION	COUNTY	TOTAL SHEETS	SHEET NO.
	6354	06-002300-00-BR	MCLEAN	64	45
26 SHEETS	SN 057-7800		CONTRACT NO. 91430		
FED. ROAD DIST. NO. 5 ILLINOIS FED. AID PROJECT					