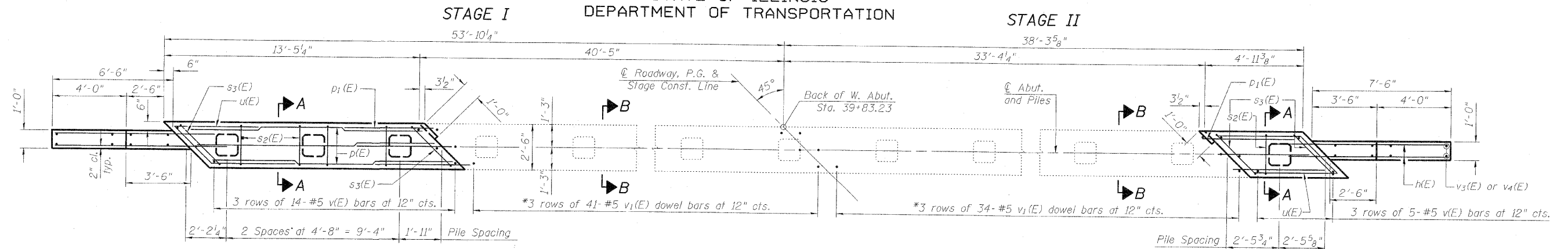
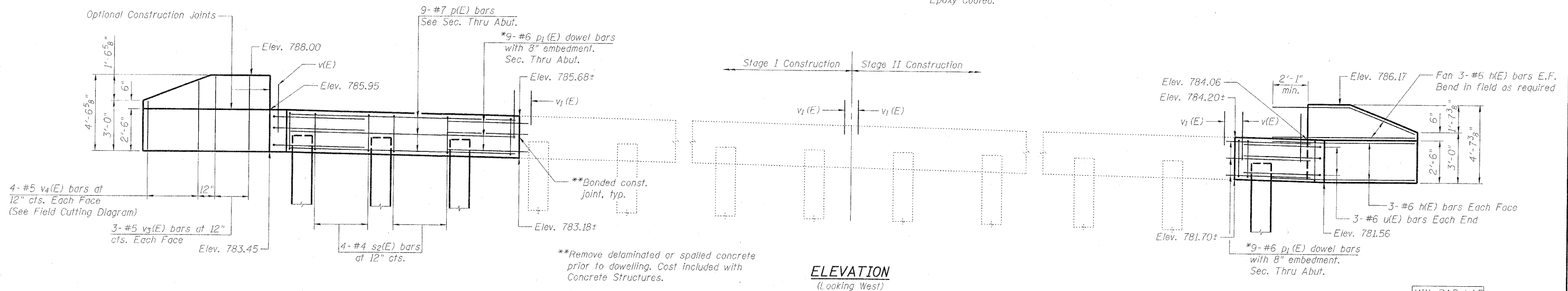


STATE OF ILLINOIS
DEPARTMENT OF TRANSPORTATION



PLAN

*Cost of drilling and dowelling bars with epoxy adhesive is included with cost of Reinforcement Bars, Epoxy Coated.

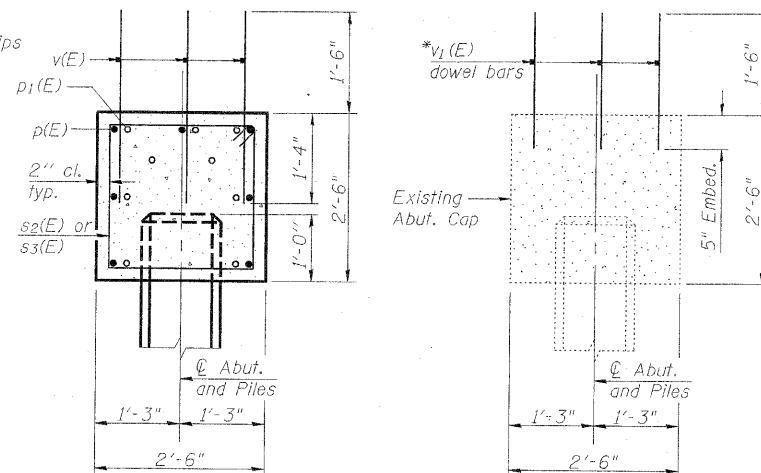


ELEVATION
(Looking West)

MIN. BAR LAP
#6 4'-5"

PILE DATA

Type: Precast Concrete 14"
Nominal Required Bearing: 265 kips
Factored Resistance Available: 132 kips
Est. Length: 22 feet
No. Production Piles: 4
No. Test Piles: 0



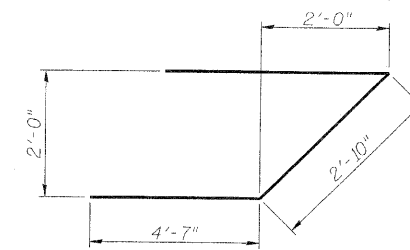
SECTION A-A

(Dimensions are at Rt. L's)

SECTION B-B

(Dimensions are at Rt. L's)

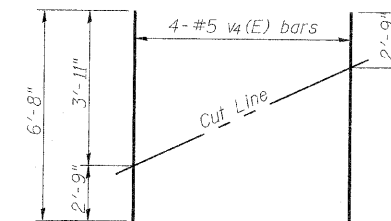
BARS s2(E) & s3(E)



BAR u(E)

WEST ABUTMENT
BILL OF MATERIAL

Bar	No.	Size	Length	Shape
h(E)	24	#5	9'-8"	—
p(E)	7	#7	13'-1"	—
p1(E)	18	#6	5'-4"	—
s2(E)	9	#4	9'-3"	□
s3(E)	4	#4	10'-11"	□
u(E)	6	#6	12'-0"	└
v(E)	57	#5	2'-10"	—
v1(E)	225	#5	1'-11"	—
v3(E)	12	#6	4'-2"	—
v4(E)	8	#6	6'-8"	—
Structure Excavation	Cu. Yd.	52		
Concrete Structures	Cu. Yd.	6.5		
Reinforcement Bars, Epoxy Coated	Pound	1,540		
Furnishing Precast Concrete Piles 14"	Foot	88		
Driving Piles	Foot	88		
Test Pile Precast Concrete	Each	0		



FIELD CUTTING DIAGRAM

Order v4(E) full length. Cut as shown and use remainder of bars in opposite face.

WEST ABUTMENT
STRUCTURE NO. 057-7800

DESIGNED	SMM
CHECKED	MAES
DRAWN	SMM
CHECKED	MAES

SHEET NO.18	F.A.U. RTE.	SECTION	COUNTY	TOTAL SHEETS	SHEET NO.
	6354	06-002300-00-BR	MCLEAN	64	47
26 SHEETS	SN 057-7800		CONTRACT NO. 91430		
	FED. ROAD DIST. NO. 5 ILLINOIS FED. AID PROJECT				