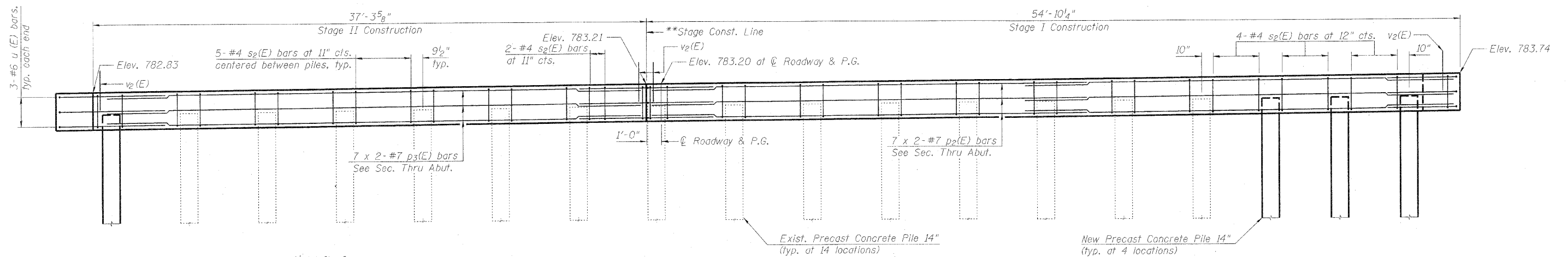
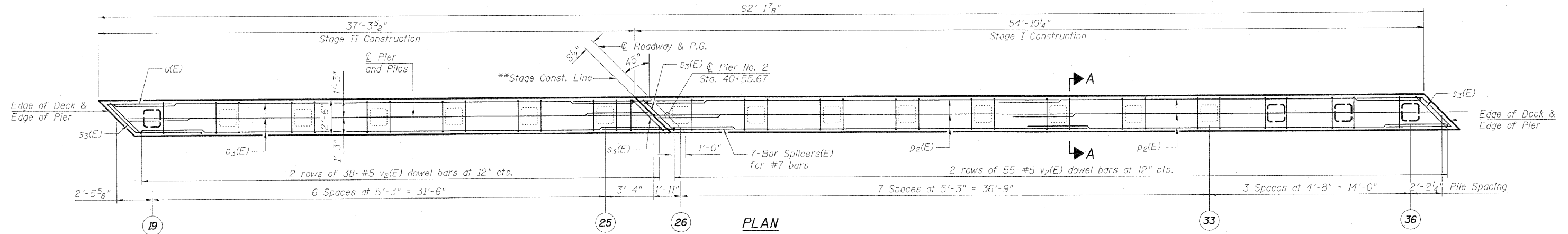


STATE OF ILLINOIS
DEPARTMENT OF TRANSPORTATION



** Stage Construction Line for pier is offset 8 1/2" left of P.G. to fit Pile No. 26 completely within Stage I construction.

ELEVATION
(Looking East)

MIN. BAR LAP	
#6	4'-5"
#7	5'-10"

PILE DATA

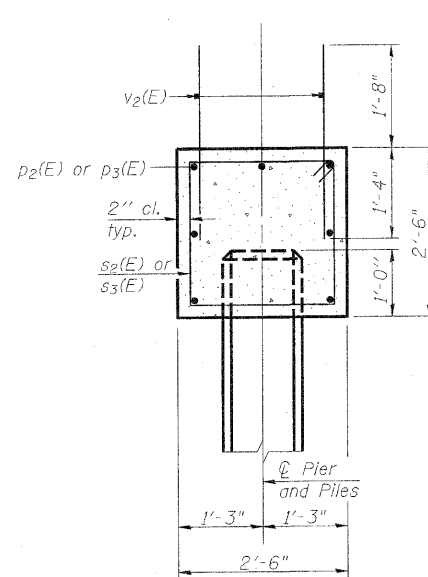
Type: Precast Concrete 14"
Nominal Required Bearing: 265 kips
Factored Resistance Available: 132 kips
Est. Length: 21 feet
No. Production Piles: 4
No. Test Piles: 0

TOP OF PILE ELEVATIONS

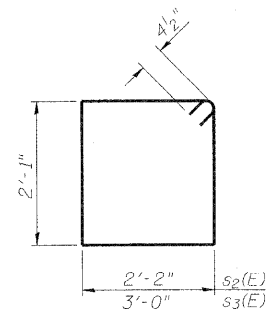
Pile No.	Elev.	Pile No.	Elev.
19	781.35	19*	781.82
20*	781.41	20*	781.87
21*	781.46	21*	781.92
22*	781.51	22*	781.98
23*	781.56	23*	782.03
24*	781.61	24*	782.08
25*	781.67	25	782.13
26*	781.72	26	782.17
27*	781.77	27	782.22

* Cut existing pile to plan elevation. Cost of cutting included with Removal of Existing Structure.

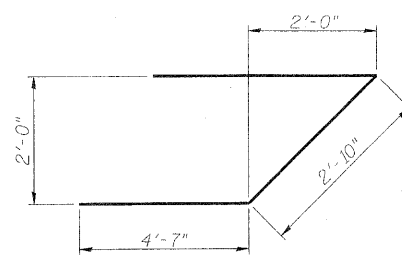
DESIGNED	SMM
CHECKED	MAES
DRAWN	SMM
CHECKED	MAES



SECTION A-A
(Dimensions are at Rt. L's)



BARS s2(E) & s3(E)



BAR u(E)

PIER NO. 2
BILL OF MATERIAL

Bar	No.	Size	Length	Shape
p2(E)	14	#7	30'-2"	—
p3(E)	7	#7	36'-10"	—
s2(E)	79	#4	9'-3"	□
s3(E)	4	#4	10'-11"	□
u(E)	6	#6	12'-0"	└
v2(E)	182	#5	3'-0"	—
Concrete Structures		Cu. Yd.	20.4	
Reinforcement Bars, Epoxy Coated		Pound	2,600	
Furnishing Precast Concrete Piles 14"		Foot	84	
Driving Piles		Foot	84	
Test Pile Precast Concrete		Each	0	

Bars indicated thus 1 x 2-#7 etc. indicates 1 line of bars with 2 lengths per line.

PIER NO. 2
STRUCTURE NO. 057-7800

SHEET NO.	F.A.U. RTE.	SECTION	COUNTY	TOTAL SHEETS	SHEET NO.
21	6354	06-002300-00-BR	MCLEAN	64	50
26 SHEETS	SN 057-7800		CONTRACT NO. 91430		
FED. ROAD DIST. NO. 5 ILLINOIS FED. AID PROJECT					