

TYPICAL TAP SERVICE CONNECTION
SCALE: NONE

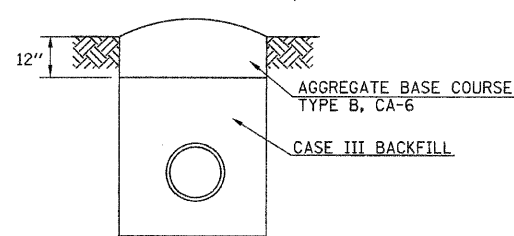
MAXIMUM DEFLECTION FULL LENGTH PIPE PUSH-ON TYPE JOINT PIPE

| SIZE OF PIPE | DEFLECTION ANGLE DEG. | MAXIMUM DEFLECTION | | APPROX. RADIUS OF CURVE | |
|--------------|-----------------------|--------------------|----------------|-------------------------|----------------|
| | | 18'-ft. LENGTH | 20'-ft. LENGTH | 18'-ft. LENGTH | 20'-ft. LENGTH |
| 4" | 5° | 19" | 21" | 205' | 230' |
| 6" | 5° | 19" | 21" | 205' | 230' |
| 8" | 5° | 19" | 21" | 205' | 230' |
| 10" | 5° | 19" | 21" | 205' | 230' |
| 12" | 5° | 19" | 21" | 205' | 230' |

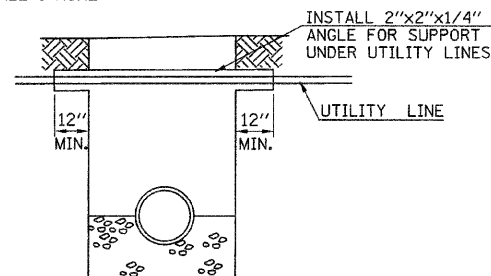
| D | 40 | 50 | 60 | 70 | 80 | 90 |
|-----|-----|-----|-----|------|-----|------|
| 6" | 1.2 | 1.5 | 1.7 | 2.0* | 2.3 | 2.6 |
| 8" | 2.0 | 2.6 | 3.1 | 3.6 | 4.1 | 4.6 |
| 10" | 3.2 | 4.0 | 4.8 | 5.5 | 6.3 | 7.1 |
| 12" | 4.6 | 5.7 | 6.8 | 8.0 | 9.1 | 10.2 |

*ESTIMATED BEARING SURFACES FOR THIS PROJECT

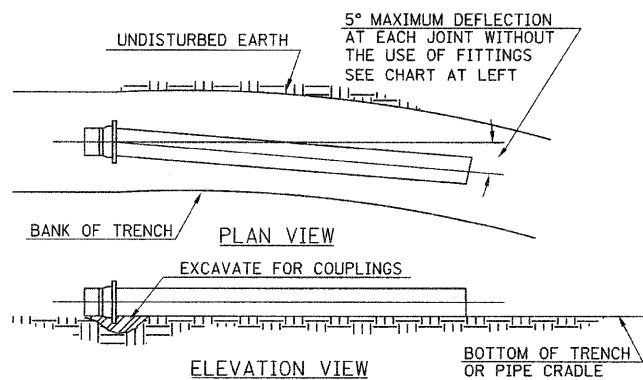
SCHEDULE FOR REACTION BLOCKING
MIN. BEARING SURFACE IN SQ. FT. LINE PRESSURE (psi)



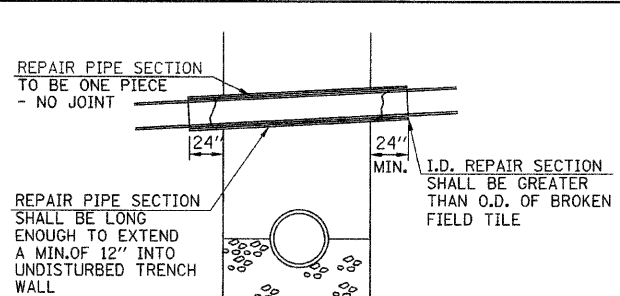
TEMPORARY SURFACE DETAIL
SCALE: NONE



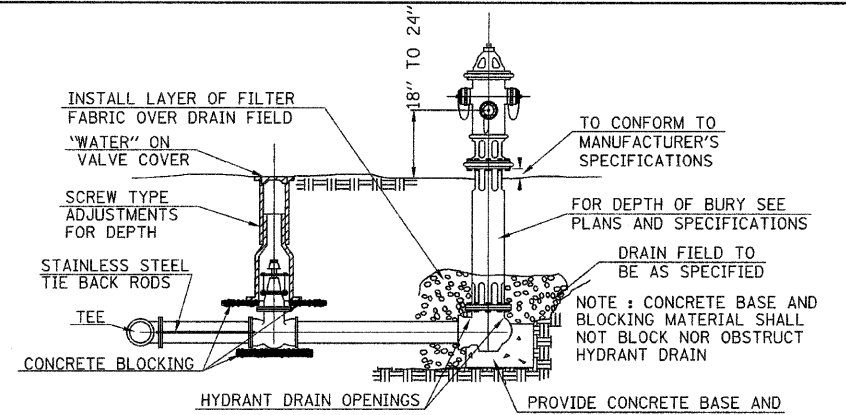
DETAIL OF UTILITY CROSSING SUPPORT
SCALE: NONE



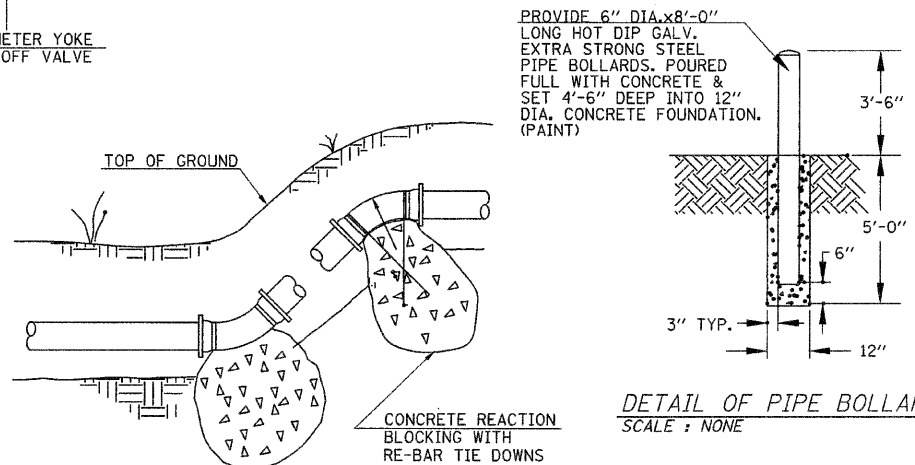
MAXIMUM PIPE DEFLECTION
SCALE: NONE



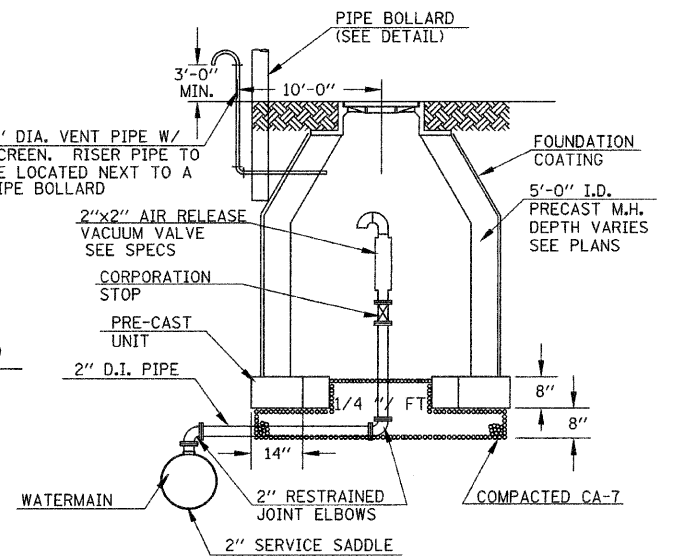
DETAIL OF DRAINAGE/FIELD TILE REPAIR
SCALE: NONE



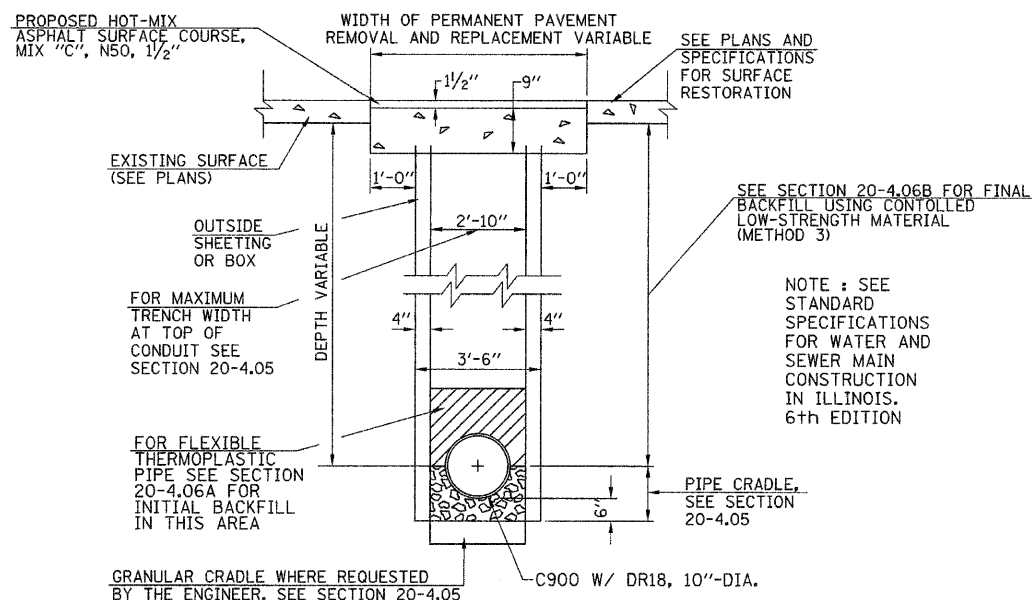
TYPICAL FIRE HYDRANT & VALVE INSTALLATION
SCALE: NONE



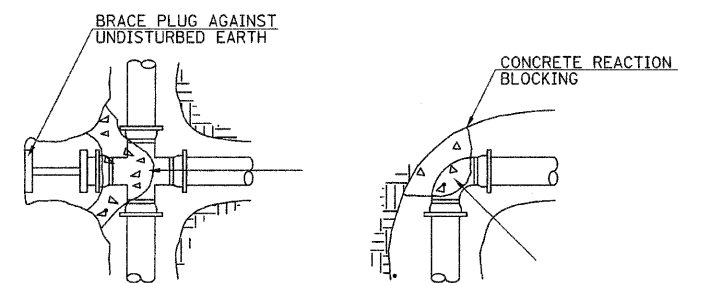
DETAIL OF PIPE BOLLARD
SCALE: NONE



DETAIL OF AIR RELEASE/VACUUM VALVE VAULT
SCALE: NONE

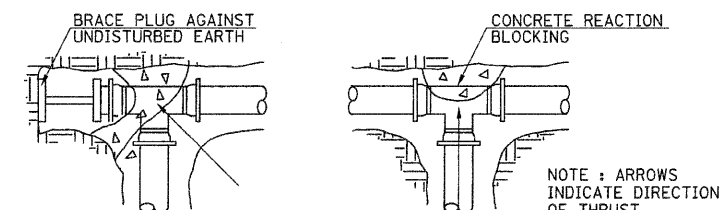


TRENCH DETAIL UNDER U.S. ROUTE 24
SCALE: NONE



PLUGGED CROSS
SCALE: NONE

90° & 45° BEND
SCALE: NONE



PLUGGED TEE
SCALE: NONE

TEE
SCALE: NONE

NOTE: ARROWS INDICATE DIRECTION OF THRUST

| | | | | | | | | | | | |
|-------------------------------------|--------------------|------------------|-----------|---|--|---------------------------|----------------|----------|--------------|-----------|--|
| FILE NAME = | USER NAME = jolson | DESIGNED - JRB | REVISED - | STATE OF ILLINOIS DEPARTMENT OF TRANSPORTATION | CITY OF RUSHVILLE DOWNTOWN SQUARE BRICK STREET RECONSTRUCTION SPECIAL DETAILS | F.A.U. RTE. | SECTION | COUNTY | TOTAL SHEETS | SHEET NO. | |
| v:\transportation\2240\2240D001.dgn | | DRAWN - JMO | REVISED - | | | N/A | 05-00017-00-FP | SCHUYLER | 49 | 42 | |
| | | CHECKED - JRB | REVISED - | | | CONTRACT NO. 93541 | | | | | |
| | | DATE - 2/17/2010 | REVISED - | | | ILLINOIS FED. AID PROJECT | | | | | |