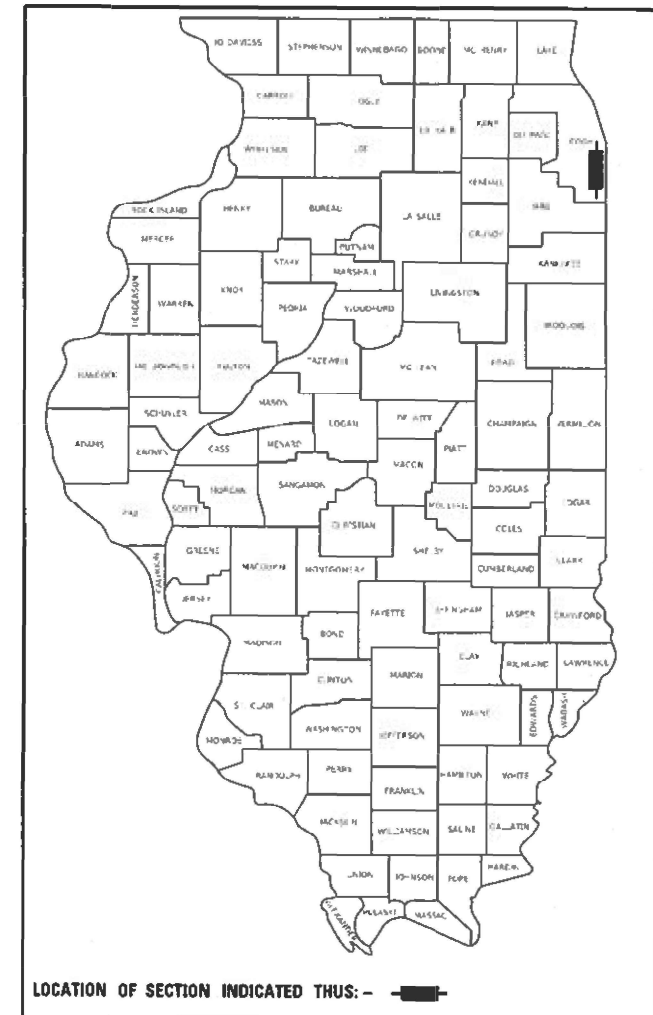


STATE OF ILLINOIS
DEPARTMENT OF TRANSPORTATION

| F.A.P. RTE. | SECTION | COUNTY | TOTAL SHEETS | SHEET NO. |
|-------------|-------------|----------|--------------------|-----------|
| 358 | 2020-040-RS | COOK | 26 | 1 |
| | | ILLINOIS | CONTRACT NO. 62L12 | |

D-91-423-20



FOR INDEX OF SHEETS, SEE SHEET NO. 2

THE PROJECT IS LOCATED IN THE CITY OF CHICAGO

PROPOSED
HIGHWAY PLANS

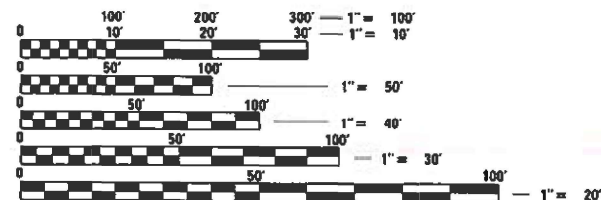
F.A.P. ROUTE 358: TORRENCE AVENUE
FROM CALUMET RIVER TO N. OF 114TH ST.
SECTION: 2020-040-RS
PROJECT: NHPP-N5B8(289)
DESIGNED OVERLAY AND ADA IMPROVEMENT
COOK COUNTY

TRAFFIC DATA:

TORRENCE AVENUE 2018 ADT = 17,200
POSTED SPEED LIMIT = 40 MPH

DESIGN DESIGNATION:

TORRENCE AVENUE: OTHER PRINCIPAL ARTERIAL



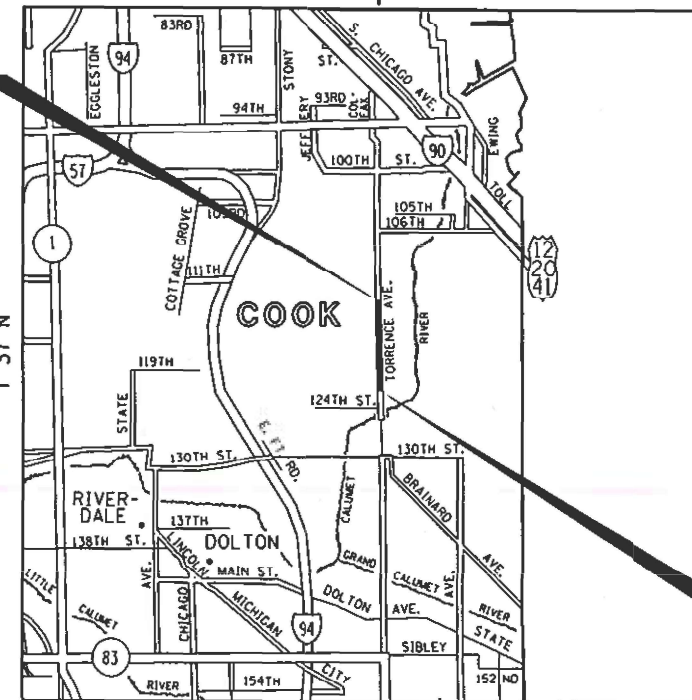
FULL SIZE PLANS HAVE BEEN PREPARED USING STANDARD ENGINEERING SCALES. REDUCED SIZED PLANS WILL NOT CONFORM TO STANDARD SCALES. IN MAKING MEASUREMENTS ON REDUCED PLANS, THE ABOVE SCALES MAY BE USED.

C.U.A.N.
CHICAGO UTILITY ALERT NETWORK
(312) 744-7000

C-91-230-20

R 14 E | R 15 E

PROJECT ENDS
STA. 86 + 55



PROJECT BEGINS
STA. 15 + 59

HYDE PARK TOWNSHIP

GROSS AND NET LENGTH = 7,096 FT. = 1.34 MILES

PROJECT MANAGER: J. ALAIN MIDY (847) 221-3056

CONTRACT NO. 62L12

STATE OF ILLINOIS
DEPARTMENT OF TRANSPORTATION

SUBMITTED August 5, 2021
[Signature] REGIONAL ENGINEER

October 1, 2021
[Signature] ENGINEER OF DESIGN AND ENVIRONMENT

October 3, 2021
[Signature] DIRECTOR OF HIGHWAYS PROJECT IMPLEMENTATION

PRINTED BY THE AUTHORITY
OF THE STATE OF ILLINOIS

GENERAL NOTES (CONTINUED..)

- 24. SIDEWALK REMOVAL AND P.C.C. SIDEWALK 5" LOCATIONS SHALL BE DETERMINED BY THE ENGINEER.
- 25. CURB RAMPS AND LANDING (KEYSTONE) TO BE CONSTRUCTED WITH 8" THICK CONCRETE AT ALL TRAFFIC SIGNALIZED INTERSECTIONS AND INDUSTRIALIZED STREET INTERSECTIONS. AT ALL OTHER LOCATIONS, 5" THICK CONCRETE IS TO BE USED.
- 26. WHERE SECTION OR SUB-SECTION MONUMENTS ARE ENCOUNTERED, THE ENGINEER SHALL BE NOTIFIED BEFORE SUCH MONUMENTS ARE REMOVED. THE CONTRACTOR SHALL PROTECT AND CAREFULLY PRESERVE ALL PROPERTY MARKERS AND MONUMENTS UNTIL THE OWNER, AN AUTHORIZED SURVEYOR OR AGENT HAS WITNESSED THEIR LOCATION.
- 27. THE THICKNESS OF THE HMA MIXTURE SHOWN ON THE PLANS IS THE NOMINAL THICKNESS. DEVIATIONS FROM THE NOMINAL THICKNESS WILL BE PERMITTED WHEN SUCH DEVIATIONS OCCUR DUE TO IRREGULARITIES IN THE EXISTING SURFACE OR BASE ON WHICH THE HMA MIXTURE IS PLACED.
- 28. EXISTING BROKEN FRAMES AND LIDS SHALL BE REMOVED AND DISPOSED OF BY THE CONTRACTOR AND SHALL BE REPLACED AS DIRECTED BY THE ENGINEER. REPLACEMENT FRAMES AND LIDS WILL BE PAID FOR ACCORDING TO ARTICLE 109.04 OF THE STANDARD SPECIFICATIONS UNLESS A SEPARATE PAY ITEM HAS BEEN PROVIDED.
- 29. OVERNIGHT LANE CLOSURES SHALL NOT BE ALLOWED FOR REHABILITATION PROJECTS INVOLVING DAYTIME MILLING AND RESURFACING OPERATIONS AND CLASS D PATCHING UNLESS OTHER CONDITIONS WARRANT EXTENDED LANE CLOSURES AS DETERMINED AND APPROVED IN WRITING BY THE ENGINEER OR AS PROVIDED FOR IN THE CONTRACT SPECIFICATIONS.
- 30. ALL BROKEN, CRACKED, WORN OR OTHERWISE DAMAGED OR BICYCLE UNSAFE FRAMES AND LIDS ON SEWER STRUCTURES, SHALL BE REPLACED WITH NEW DEPARTMENT OF SEWERS' STANDARD FRAMES AND LIDS.

MODEL: Default
 FILE NAME: p:\data\room\dot\illinois.gov\PWIDOT\Documents\DOT_Offices\District 1\Projects\142320\CADD\Design\142320-sh-generates.dgn

| | | |
|-------------------------------|------------|-----------|
| USER NAME = paraynoal | DESIGNED - | REVISED - |
| | DRAWN - | REVISED - |
| PLOT SCALE = 100,0000 ' / in. | CHECKED - | REVISED - |
| PLOT DATE = 8/11/2021 | DATE - | REVISED - |

**STATE OF ILLINOIS
DEPARTMENT OF TRANSPORTATION**

**TORRENCE AVE. (CALUMET RIVER – N. OF 114TH ST.)
GENERAL NOTES AND INDEX SHEET**

SCALE: SHEET OF SHEETS STA. TO STA.

| F.A.P. RTE. | SECTION | COUNTY | TOTAL SHEETS | SHEET NO. |
|--------------------|-------------|--------|---------------------------|-----------|
| 358 | 2020-040-R5 | COOK | 26 | 3 |
| CONTRACT NO. 62L12 | | | ILLINOIS FED. AID PROJECT | |

| SUMMARY OF QUANTITIES | | | TOTAL QUANTITIES URBAN | CONSTRUCTION TYPE CODE | | | | |
|-----------------------|--|-------|------------------------|------------------------------|--------------------|--|--|--|
| CODE NO | ITEM | UNIT | | 0005 80% FED 20% STATE | 0005 100% STATE | | | |
| 70102635 | TRAFFIC CONTROL AND PROTECTION, STANDARD 701701 | L SUM | 1 | 1 | | | | |
| 70102640 | TRAFFIC CONTROL AND PROTECTION, STANDARD 701801 | L SUM | 1 | 1 | | | | |
| 70300100 | SHORT TERM PAVEMENT MARKING | FOOT | 10804 | 10804 | | | | |
| 70300150 | SHORT TERM PAVEMENT MARKING REMOVAL | SO FT | 3602 | 3602 | | | | |
| 70300220 | TEMPORARY PAVEMENT MARKING - LINE 4" | FOOT | 17077 | 17077 | | | | |
| 70300240 | TEMPORARY PAVEMENT MARKING - LINE 6" | FOOT | 182 | 182 | | | | |
| 70300280 | TEMPORARY PAVEMENT MARKING - LINE 24" | FOOT | 69 | 69 | | | | |
| 70300520 | PAVEMENT MARKING TAPE, TYPE III 4" | FOOT | 2701 | 2701 | | | | |
| * 78000200 | THERMOPLASTIC PAVEMENT MARKING - LINE 4" | FOOT | 17077 | 17077 | | | | |
| * 78000400 | THERMOPLASTIC PAVEMENT MARKING - LINE 6" | FOOT | 182 | 182 | | | | |
| * 78000650 | THERMOPLASTIC PAVEMENT MARKING - LINE 24" | FOOT | 69 | 69 | | | | |
| 78300200 | RAISED REFLECTIVE PAVEMENT MARKER REMOVAL | EACH | 958 | 958 | | | | |

| SUMMARY OF QUANTITIES | | | TOTAL QUANTITIES URBAN | CONSTRUCTION TYPE CODE | | | | |
|-----------------------|--|-------|------------------------|------------------------------|--------------------|--|--|--|
| CODE NO | ITEM | UNIT | | 0005 80% FED 20% STATE | 0005 100% STATE | | | |
| 88600600 | DETECTOR LOOP REPLACEMENT | FOOT | 50 | 50 | | | | |
| X0320050 | CONSTRUCTION LAYOUT (SPECIAL) | L SUM | 1 | 1 | | | | |
| X4060995 | TEMPORARY RAMP, SPECIAL | SO YD | 60 | 60 | | | | |
| X4240800 | DETECTABLE WARNINGS (SPECIAL) | SO FT | 30 | 30 | | | | |
| X4400501 | COMBINATION CURB AND GUTTER REMOVAL AND REPLACEMENT LESS THAN OR EQUAL TO 10 FEET | FOOT | 100 | 100 | | | | |
| X5537800 | STORM SEWERS TO BE CLEANED 12" | FOOT | 1000 | | 1000 | | | |
| X6030310 | FRAMES AND LIDS TO BE ADJUSTED (SPECIAL) | EACH | 96 | 96 | | | | |
| X7030005 | TEMPORARY PAVEMENT MARKING REMOVAL | SO FT | 6822 | 6822 | | | | |
| Z0004562 | COMBINATION CONCRETE CURB AND GUTTER REMOVAL AND REPLACEMENT | FOOT | 1399 | 1399 | | | | |
| Z0018500 | DRAINAGE STRUCTURES TO BE CLEANED | EACH | 83 | | 83 | | | |
| Z0030850 | TEMPORARY INFORMATION SIGNING | SO FT | 89 | 89 | | | | |
| Z0033700 | LONGITUDINAL JOINT SEALANT | FOOT | 21288 | 21288 | | | | |
| Z0076600 | TRAINEES | HOURS | 500 | 500 | | | | |
| Z0076604 | TRAINEES - TRAINING PROGRAM GRADUATE | HOURS | 500 | 500 | | | | |
| * SPECIALTY ITEMS | | | | | | | | |

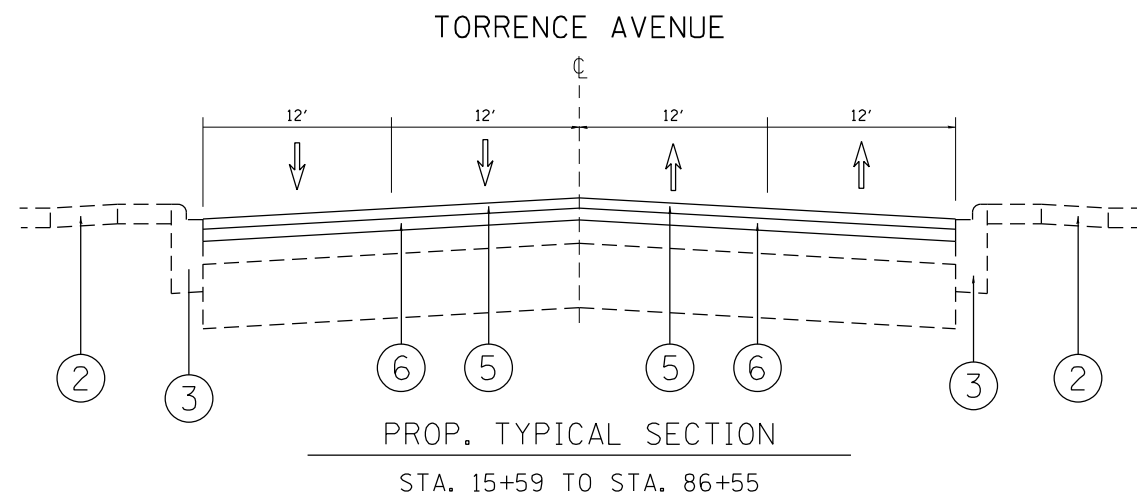
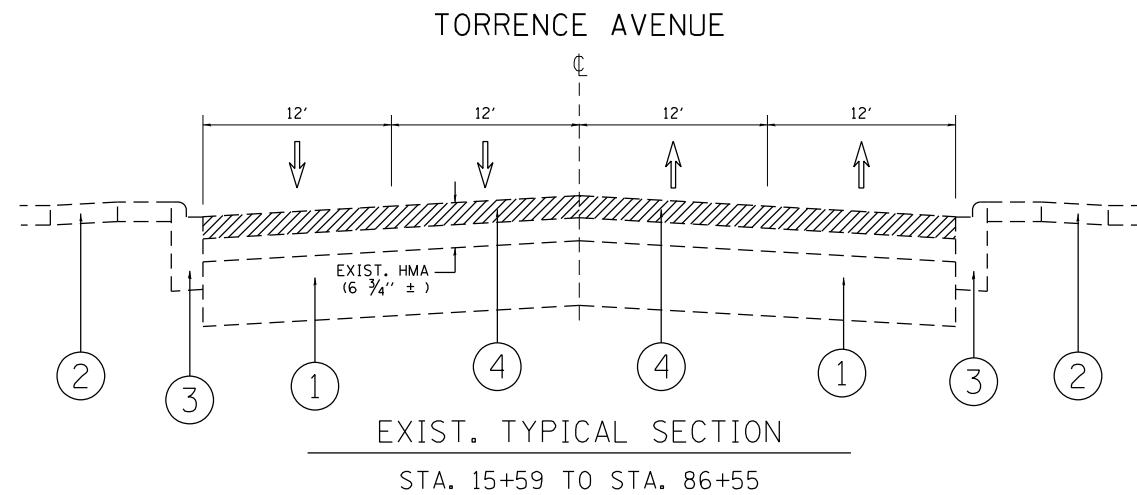
| | | | |
|--|--|------------|-----------|
| FILE NAME = | USER NAME = paragnol | DESIGNED - | REVISED - |
| pw:\planroom\dtd\illinois\p11001\Documents\DOT | Files\District\Projects\042320\CADD\Design\042320-11 | DRAWN - | REVISED - |
| | PLOT SCALE = 100,0000' / 1in. | CHECKED - | REVISED - |
| | PLOT DATE = 8/11/2021 | DATE - | REVISED - |

**STATE OF ILLINOIS
DEPARTMENT OF TRANSPORTATION**

**TORRENCE AVE. (CALUMET RIVER - N. OF 114TH ST.)
SUMMARY OF QUANTITIES**

| | | | | |
|---|-------------|--------|--------------|-----------|
| F.A.P. RTE. | SECTION | COUNTY | TOTAL SHEETS | SHEET NO. |
| 358 | 2020-040-R5 | COOK | 26 | 5 |
| CONTRACT NO. 62L12 | | | | |
| FED. ROAD DIST. NO. 1 ILLINOIS FED. AID PROJECT | | | | |

0042



LEGEND

- ① EXISTING P.C.C. PAVEMENT, ±10"
- ② EXISTING P.C.C. SIDEWALK (TYP.)
- ③ EXISTING COMB. CONCRETE CURB AND GUTTER
- ④ PROP. HMA SURFACE REMOVAL, 3 3/4"
- ⑤ PROP. POLY. HMA SURFACE COURSE, IL-9.5, MIX "E", N70, 1 3/4"
- ⑥ PROP. HMA BINDER COURSE, IL-9.5, N70, 2"

HOT-MIX ASPHALT MIXTURE REQUIREMENTS

| MIXTURE TYPE | AIR VOIDS @ NDes | QMP |
|--|------------------|---------|
| <i>ROADWAY DESIGN OVERLAY:</i> | | |
| POLY. HMA SURFACE COURSE, IL-9.5, MIX "E", N70, 1 3/4" | 4% AT 70 GYR. | OCP |
| HMA BINDER COURSE, IL-9.5, N70, 2" | 4% AT 70 GYR. | OCP |
| <i>HOT-MIX ASPHALT PATCHING:</i> | | |
| CLASS D PATCHES (HMA BINDER IL-19 mm), 13" | 4% AT 70 GYR. | QC / QA |
| <i>TEMPORARY RAMP, SPECIAL:</i> | | |
| HMA BINDER COURSE, IL-9.5, N70 (VARIABLE DEPTH) | 4% AT 70 GYR. | QC / QA |

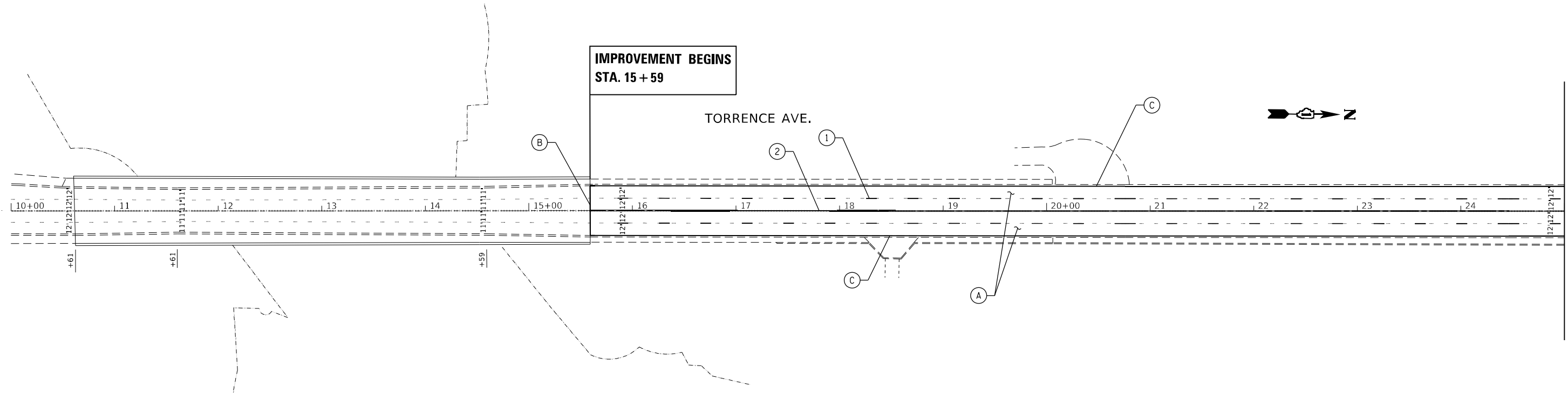
QMP Designation: Quality Control/Quality Assurance (QC/QA);
Quality Control for Performance (OCP)

NOTES:

- THE CONTRACTOR SHALL MILL THE ROADWAY FIRST, THEN DO PAVEMENT PATCHING PER BD-22 DETAIL.
- THE PROPOSED LOGITUDINAL JOINT SEALANT SHALL BE PLACED OVER THE HMA BINDER CRSE, IL-9.5, N70

NOTES:

THE UNIT WEIGHT USED TO CALCULATE ALL HMA SURFACE MIXTURE QUANTITIES IS 112 LBS/SQ YD/IN.
THE "AC TYPE" FOR POLYMERIZED HMA MIXES SHALL BE "SBS/SBR PG 76-22" AND FOR NON-POLYMERIZED HMA THE "AC TYPE" SHALL BE "PG 64-22" UNLESS MODIFIED BY SPECIAL PROVISIONS.
FOR USE OF RECYCLED MATERIALS SEE SPECIAL PROVISIONS.
QUALITY MANAGEMENT PROGRAM (QMP) IDENTIFIES THE PARTICULAR QUALITY CONTROL SPECIFICATION THAT APPLIES TO THE HMA MIXTURE.



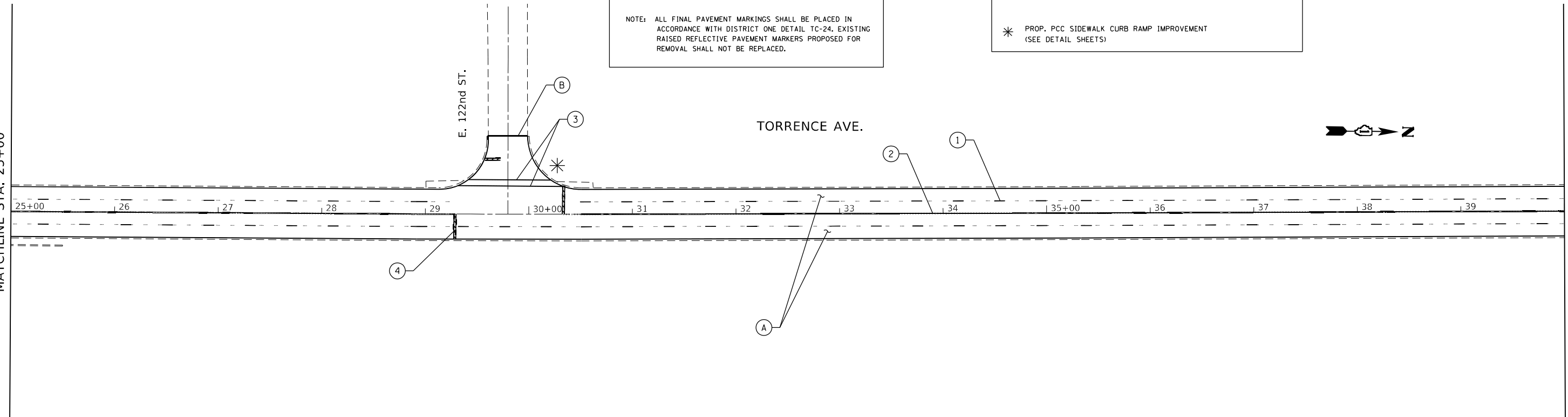
PAVEMENT MARKING LEGEND

- ① PROP. THERMO. PVT. MRK.-4" 6' DASH - 18' SKIP, WHITE (TYP.)
- ② PROP. THERMO. PVT. MRK.-4" CENTERLINE, DOUBLE YELLOW (TYP.)
- ③ PROP. THERMO. PVT. MRK.-6" CROSSWALK, SOLID LINE, WHITE (TYP.)
- ④ PROP. THERMO. PVT. MRK.-24" STOP LINE, WHITE (TYP.)

NOTE: ALL FINAL PAVEMENT MARKINGS SHALL BE PLACED IN ACCORDANCE WITH DISTRICT ONE DETAIL TC-24. EXISTING RAISED REFLECTIVE PAVEMENT MARKERS PROPOSED FOR REMOVAL SHALL NOT BE REPLACED.

ROADWAY PROPOSED WORK LEGEND

- Ⓐ PROP. HMA SURFACE REMOVAL, 3 3/4" PROP. POLY. HMA SURFACE CRSE, IL-9.5, MIX "E", N70, 1 3/4" PROP. HMA BINDER CRSE, IL-9.5, N70, 2"
- Ⓑ PROP. HMA SURFACE REMOVAL - BUTT JOINT LIMIT OF RESURFACING
- Ⓒ PROP. TEMPORARY RAMP, SPECIAL - VARIABLE DEPTH (ON SIDE ROADS AND DRIVEWAYS WITH DEPRESSED CURB)
- * PROP. PCC SIDEWALK CURB RAMP IMPROVEMENT (SEE DETAIL SHEETS)



MODEL: Default
 FILE NAME: p:\planning\room\dot\illinois\dot\pww\dot\Documents\DOT_Offices\Distrefc_1\Projects\ID142320\CADD\Drawings\Design\ID142320-sh-4-lb-00p

| | | |
|------------------------------|------------|-----------|
| USER NAME = paraynoal | DESIGNED - | REVISED - |
| PLOT SCALE = 100,0000' / in. | DRAWN - | REVISED - |
| PLOT DATE = 8/11/2021 | CHECKED - | REVISED - |
| | DATE - | REVISED - |

STATE OF ILLINOIS
DEPARTMENT OF TRANSPORTATION

ROADWAY PLAN
TORRENCE AVE. (CALUMET RIVER - N. OF 114TH ST.)

SCALE: 1"=50' SHEET OF SHEETS STA. TO STA.

| F.A.P. RTE. | SECTION | COUNTY | TOTAL SHEETS | SHEET NO. |
|---------------------------|-------------|--------|--------------|-----------|
| 358 | 2020-040-RS | COOK | 26 | 7 |
| CONTRACT NO. 62L12 | | | | |
| ILLINOIS FED. AID PROJECT | | | | |



MATCHLINE STA. 40+00

MATCHLINE STA. 55+00

TORRENCE AVE.



PAVEMENT MARKING LEGEND

- ① PROP. THERMO. PVT. MKK.-4"
6' DASH - 18" SKIP, WHITE (TYP.)
- ② PROP. THERMO. PVT. MKK.-4"
CENTERLINE, DOUBLE YELLOW (TYP.)
- ③ PROP. THERMO. PVT. MKK.-6"
CROSSWALK, SOLID LINE, WHITE (TYP.)
- ④ PROP. THERMO. PVT. MKK.-24"
STOP LINE, WHITE (TYP.)

NOTE: ALL FINAL PAVEMENT MARKINGS SHALL BE PLACED IN ACCORDANCE WITH DISTRICT ONE DETAIL TC-24. EXISTING RAISED REFLECTIVE PAVEMENT MARKERS PROPOSED FOR REMOVAL SHALL NOT BE REPLACED.

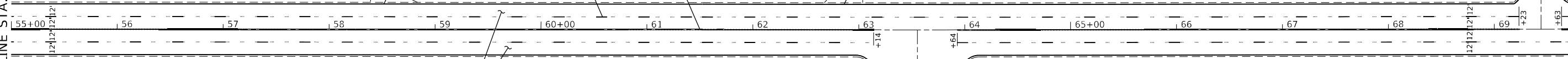
ROADWAY PROPOSED WORK LEGEND

- Ⓐ PROP. HMA SURFACE REMOVAL, 3 3/4"
PROP. POLY. HMA SURFACE CRSE, IL-9.5, MIX "E", N70, 1 3/4"
PROP. HMA BINDER CRSE, IL-9.5, N70, 2"
- Ⓑ PROP. HMA SURFACE REMOVAL - BUTT JOINT
LIMIT OF RESURFACING
- Ⓒ PROP. TEMPORARY RAMP, SPECIAL - VARIABLE DEPTH
(ON SIDE ROADS AND DRIVEWAYS WITH DEPRESSED CURB)
- * PROP. PCC SIDEWALK CURB RAMP IMPROVEMENT
(SEE DETAIL SHEETS)

MATCHLINE STA. 55+00

MATCHLINE STA. 70+00

TORRENCE AVE.



MODEL: Default
 FILE NAME: p:\pub\mroom.dwt\illinois\dot\Documents\DOT_Offices\District 1\Projects\142220\Cadd\Drawings\142220-sh-14b-00p

| | | |
|-------------------------------|------------|-----------|
| USER NAME = paraynoal | DESIGNED - | REVISED - |
| | DRAWN - | REVISED - |
| PLOT SCALE = 100,0000 ' / in. | CHECKED - | REVISED - |
| PLOT DATE = 8/11/2021 | DATE - | REVISED - |

**STATE OF ILLINOIS
DEPARTMENT OF TRANSPORTATION**

**ROADWAY PLAN
TORRENCE AVE. (CALUMET RIVER - N. OF 114TH ST.)**

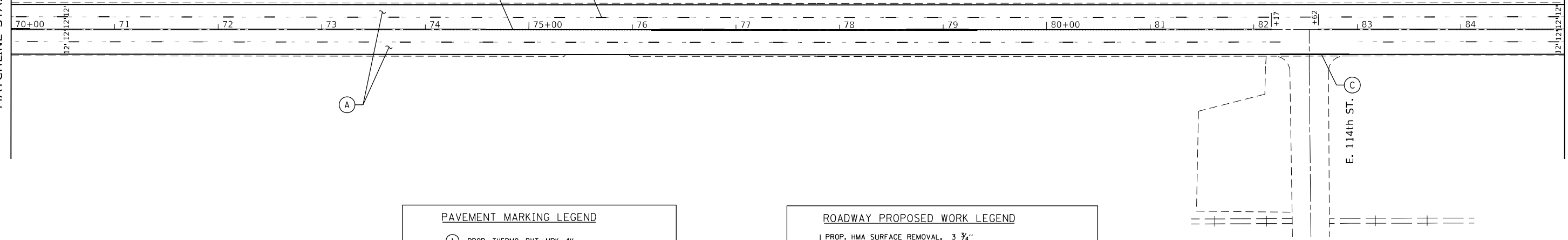
SCALE: 1"=50' SHEET OF SHEETS STA. TO STA.

| | | | | |
|---------------------------|---------------------|-------------|--------------------|-------------|
| F.A.P. RTE. 358 | SECTION 2020-040-RS | COUNTY COOK | TOTAL SHEETS 26 | SHEET NO. 8 |
| ILLINOIS FED. AID PROJECT | | | CONTRACT NO. 62L12 | |

MATCHLINE STA. 70+00

MATCHLINE STA. 85+00

TORRENCE AVE.



PAVEMENT MARKING LEGEND

- ① PROP. THERMO. PVT. MRK.-4"
6' DASH - 18' SKIP, WHITE (TYP.)
- ② PROP. THERMO. PVT. MRK.-4"
CENTERLINE, DOUBLE YELLOW (TYP.)
- ③ PROP. THERMO. PVT. MRK.-6"
CROSSWALK, SOLID LINE, WHITE (TYP.)
- ④ PROP. THERMO. PVT. MRK.-24"
STOP LINE, WHITE (TYP.)

NOTE: ALL FINAL PAVEMENT MARKINGS SHALL BE PLACED IN ACCORDANCE WITH DISTRICT ONE DETAIL TC-24. EXISTING RAISED REFLECTIVE PAVEMENT MARKERS PROPOSED FOR REMOVAL SHALL NOT BE REPLACED.

ROADWAY PROPOSED WORK LEGEND

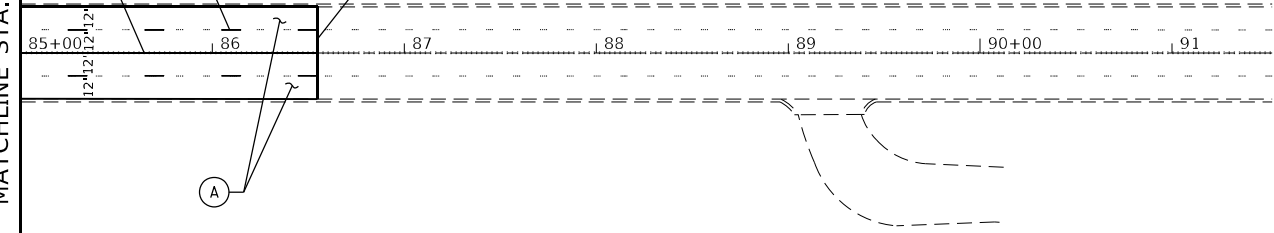
- A PROP. HMA SURFACE REMOVAL, 3 3/4"
PROP. POLY. HMA SURFACE CRSE, IL-9.5, MIX "E", N70, 1 3/4"
PROP. HMA BINDER CRSE, IL-9.5, N70, 2"
- B PROP. HMA SURFACE REMOVAL - BUTT JOINT
LIMIT OF RESURFACING
- C PROP. TEMPORARY RAMP, SPECIAL - VARIABLE DEPTH
(ON SIDE ROADS AND DRIVEWAYS WITH DEPRESSED CURB)
- * PROP. PCC SIDEWALK CURB RAMP IMPROVEMENT
(SEE DETAIL SHEETS)

**IMPROVEMENT ENDS
STA. 86 + 55**

TORRENCE AVE.



MATCHLINE STA. 85+00



MODEL: Default
 FILE NAME: p:\m\m\room\dot\illinois\dot\p\p\DOT\Documents\DOT - Office\District 1\Projects\142320\CADD\Drawings\142320-sh-01b.dwg
 PROJECT: 142320

| | | |
|------------------------------|------------|-----------|
| USER NAME = paraynoal | DESIGNED - | REVISED - |
| PLOT SCALE = 100,0000' / in. | DRAWN - | REVISED - |
| PLOT DATE = 8/11/2021 | CHECKED - | REVISED - |
| | DATE - | REVISED - |

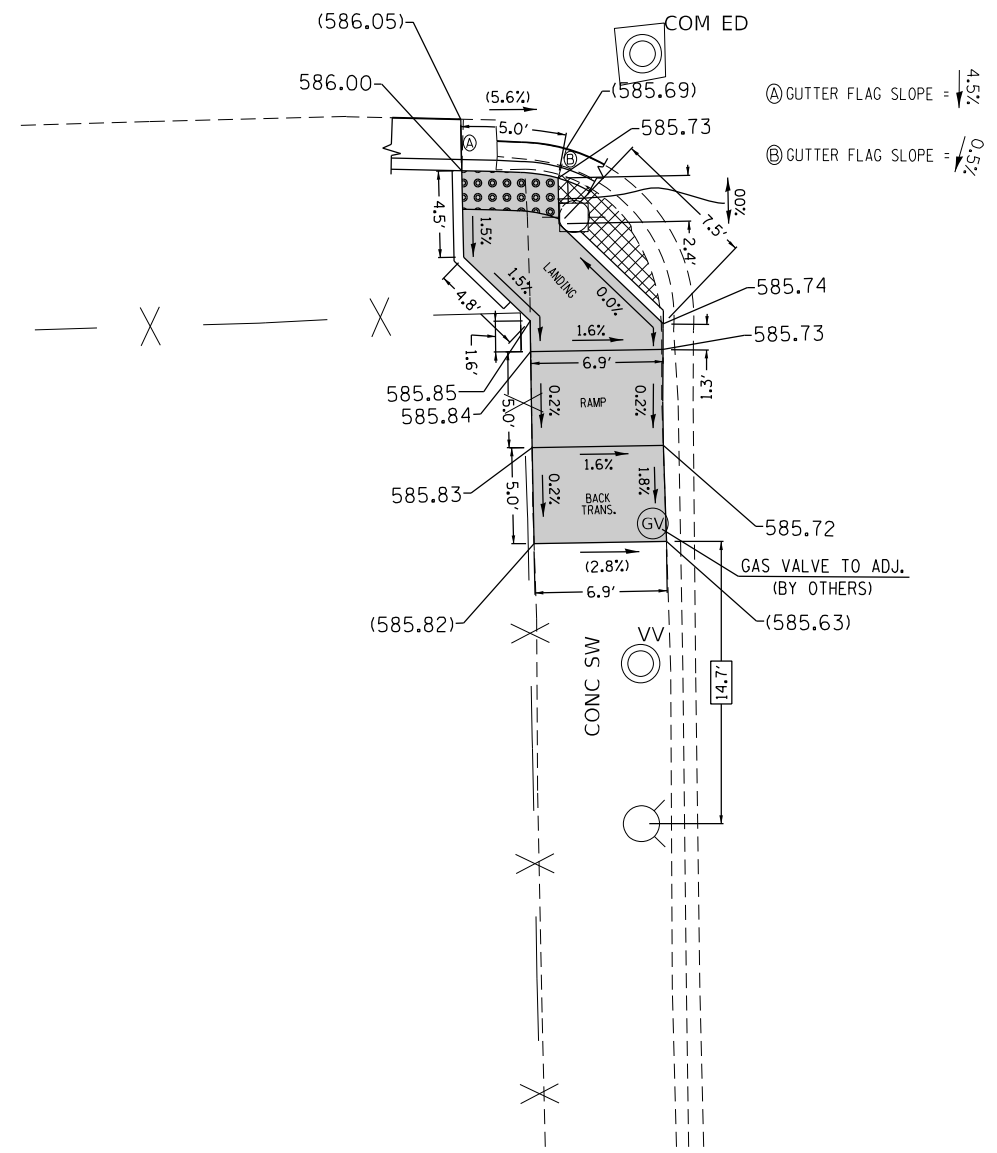
**STATE OF ILLINOIS
DEPARTMENT OF TRANSPORTATION**

| | | | |
|--|-------|-----------|--------------|
| ROADWAY PLAN | | | |
| TORRENCE AVE. (CALUMET RIVER - N. OF 114TH ST.) | | | |
| SCALE: 1"=50' | SHEET | OF SHEETS | STA. TO STA. |

| | | | | |
|---------------------------|-------------|--------|--------------|-----------|
| F.A.P. RTE. | SECTION | COUNTY | TOTAL SHEETS | SHEET NO. |
| 358 | 2020-040-RS | COOK | 26 | 9 |
| CONTRACT NO. 62L12 | | | | |
| ILLINOIS FED. AID PROJECT | | | | |

116th ST.

TORRENCE AVE.



REFERENCE BENCHMARK ELEV: 587.06
 BENCHMARK DESCRIPTION : X-CUT ON N.W. BOLT ON FIRE HYDRANT.
 BENCHMARK LOCATION : AT W. SIDE OF TORRENCE AVE,
 APPROX. 50 FEET S. OF 116TH ST.

LEGEND

| | | | |
|--|--------------------------|--|---|
| | EXISTING LENGTH | | PROPOSED SIDEWALK |
| | PROPOSED SIDE CURB | | DETECTABLE WARNINGS (SPECIAL) |
| | EXISTING ELEVATION/SLOPE | | SIDEWALK REMOVAL REPLACE W/TOPSOIL & SOD |

**PROP. ADA LOCATION:
 SW CORNER OF TORRENCE AVE. AND 116TH ST.**

MODEL: Default
 FILE NAME: p:\data\armonia\dot\illinois\dot\p\projects\142320\CaddData\Design\142320-sh-detailed.com

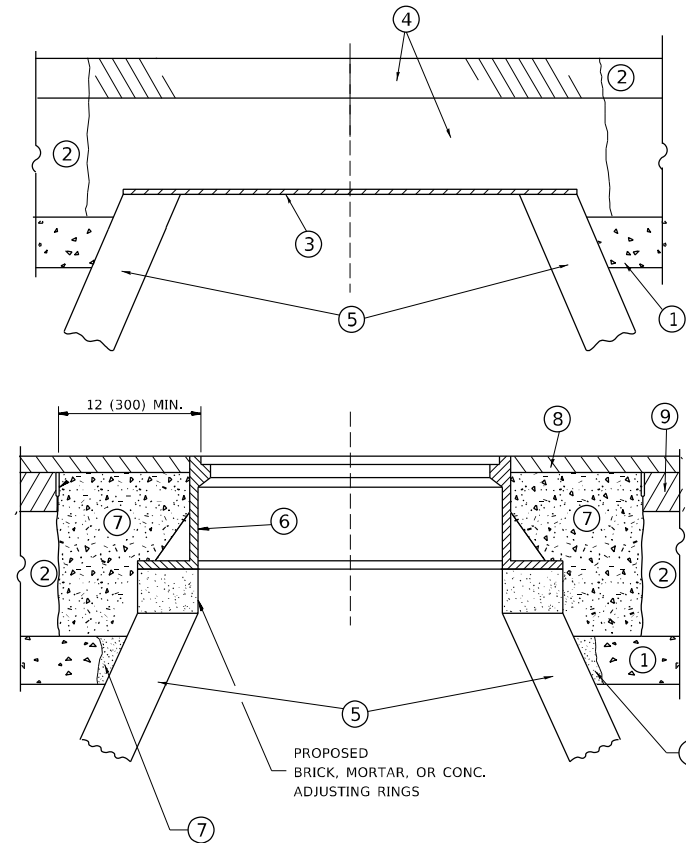
| | | |
|------------------------------|------------|-----------|
| USER NAME = paraynoal | DESIGNED - | REVISED - |
| | DRAWN - | REVISED - |
| PLOT SCALE = 10,0000 * / in. | CHECKED - | REVISED - |
| PLOT DATE = 8/11/2021 | DATE - | REVISED - |

**STATE OF ILLINOIS
 DEPARTMENT OF TRANSPORTATION**

**SIDEWALK DETAIL PLAN
 TORRENCE AVE. (CALUMET RIVER - N. OF 114TH ST.)**

SCALE: SHEET OF SHEETS STA. TO STA.

| | | | | |
|---------------------------|---------------------|-------------|-----------------|--------------|
| F.A.P. RTE. 358 | SECTION 2020-040-R5 | COUNTY COOK | TOTAL SHEETS 26 | SHEET NO. 11 |
| CONTRACT NO. 62L12 | | | | |
| ILLINOIS FED. AID PROJECT | | | | |



NOTES

EXISTING BROKEN FRAMES AND LIDS SHALL BE REMOVED AND DISPOSED OF BY THE CONTRACTOR AND SHALL BE REPLACED AS DIRECTED BY THE ENGINEER. REPLACEMENT FRAMES AND LIDS WILL BE PAID FOR IN ACCORDANCE WITH ARTICLE 109.04 OF THE STANDARD SPECIFICATIONS UNLESS A SEPARATE PAY ITEM HAS BEEN PROVIDED.

IF THE EXISTING LIDS ARE OPEN, THE FRAME WILL BE ADJUSTED TO THE ELEVATION OF THE MILLED PAVEMENT SURFACE PRIOR TO THE MILLING OPERATION. THE FRAME WILL NOT BE REMOVED AND COVERED BY THE METAL PLATE.

CITY OF CHICAGO CASTINGS ARE THE PROPERTY OF THE CITY AND THE CONTRACTOR SHALL NOTIFY THE CITY FOR REMOVAL AND DISPOSITION OF THE CASTINGS.

THE METAL PLATE USED TO COVER THE STRUCTURE SHALL REMAIN THE PROPERTY OF THE CONTRACTOR.

WHEN STRUCTURES ARE TO BE ADJUSTED OR RECONSTRUCTED, THE LOWERING AND RAISING OF THE FRAMES AND LIDS WILL NOT BE PAID FOR SEPARATELY BUT WILL BE INCLUDED IN THE COST OF THE CORRESPONDING PAY ITEM.

CONSTRUCTION PROCEDURES

STAGE 1 (BEFORE PAVEMENT MILLING)

- A) REMOVE A MINIMUM OF 12 (300) OF THE PAVEMENT FROM AROUND THE STRUCTURE.
- B) REMOVE THE EXISTING FRAME AND LID FROM THE STRUCTURE.
- C) COVER THE STRUCTURE OPENING WITH A 36 (900) DIAMETER METAL PLATE.
- D) BACKFILL WITH CRUSHED STONE AND A MINIMUM 1½ (40) THICK HMA SURFACE MIX APPROVED BY THE ENGINEER.

STAGE 2 (AFTER PAVEMENT MILLING)

- A) REMOVE THE HMA SURFACE MIX AND CRUSHED STONE.
- B) INSTALL THE FRAME AND LID; ADJUST THE FRAME TO ITS FINAL SURFACE ELEVATION.
- C) THE SURROUNDING SPACE SHALL BE FILLED WITH CLASS PP-1 * CONCRETE TO THE ELEVATION OF THE SURFACE OF THE EXISTING BASE COURSE OR THE BINDER COURSE.

* UNLESS OTHERWISE SPECIFIED IN THE PLANS.

THE PROCEDURE EXPLAINED ABOVE SHALL CONFORM TO THE APPLICABLE PORTIONS OF SECTIONS 353, 406, 602, AND 603 OF THE STANDARD SPECIFICATIONS EXCEPT THAT *THE CONTRACTOR SHALL ADJUST THE STRUCTURES TO THE FINISHED PAVEMENT ELEVATION NO MORE THAN 5 CALENDAR DAYS PRIOR TO PLACEMENT OF THE FINAL LIFT OF SURFACE UNLESS APPROVED BY THE ENGINEER."

LEGEND

- ① SUB-BASE GRANULAR MATERIAL
- ② EXISTING PAVEMENT
- ③ 36 (900) DIAMETER METAL PLATE
- ④ PROPOSED CRUSHED STONE AND HMA SURFACE MIX
- ⑤ EXISTING STRUCTURE
- ⑥ FRAME AND LID (SEE NOTES)
- ⑦ CLASS PP-1 *CONCRETE
- ⑧ PROPOSED HMA SURFACE COURSE
- ⑨ PROPOSED HMA BINDER COURSE

LOCATION OF STRUCTURES

THE CONTRACTOR WILL BE REQUIRED TO KEEP A RECORD OF THE LOCATIONS OF THE BURIED STRUCTURES ACCORDING TO THE STATION AND DISTANCE LEFT OR RIGHT OF THE CENTERLINE OF PAVEMENT. UPON COMPLETION OF THE WORK, THE CONTRACTOR WILL DELIVER THE RECORD TO THE ENGINEER.

BASIS OF PAYMENT

REMOVING FRAMES AND LIDS ON DRAINAGE AND UTILITY STRUCTURES IN THE PAVEMENT PRIOR TO MILLING, AND ADJUSTING TO FINAL GRADE PRIOR TO PLACING THE SURFACE COURSE, WILL BE PAID FOR AT THE CONTRACT UNIT PRICE EACH FOR *FRAMES AND LIDS TO BE ADJUSTED (SPECIAL)."

THIS WORK WILL NOT BE PAID FOR WHEN DRAINAGE AND UTILITY STRUCTURES ARE SPECIFIED FOR PAYMENT AS STRUCTURE RECONSTRUCTION.

NEW FRAMES AND LIDS, WHEN SPECIFIED, WILL BE PAID FOR SEPARATELY.

DETAILS FOR FRAMES AND LIDS ADJUSTMENT WITH MILLING

ALL DIMENSIONS ARE IN INCHES (MILLIMETERS) UNLESS OTHERWISE SHOWN

MODEL: Default
 FILE NAME: p:\m\m\room\dot\illinois\pwr\pww\DOT\Documents\IBOT_Office\Drawings\1\Project\ID142320\CaddData\Design\DIS\Std.dgn

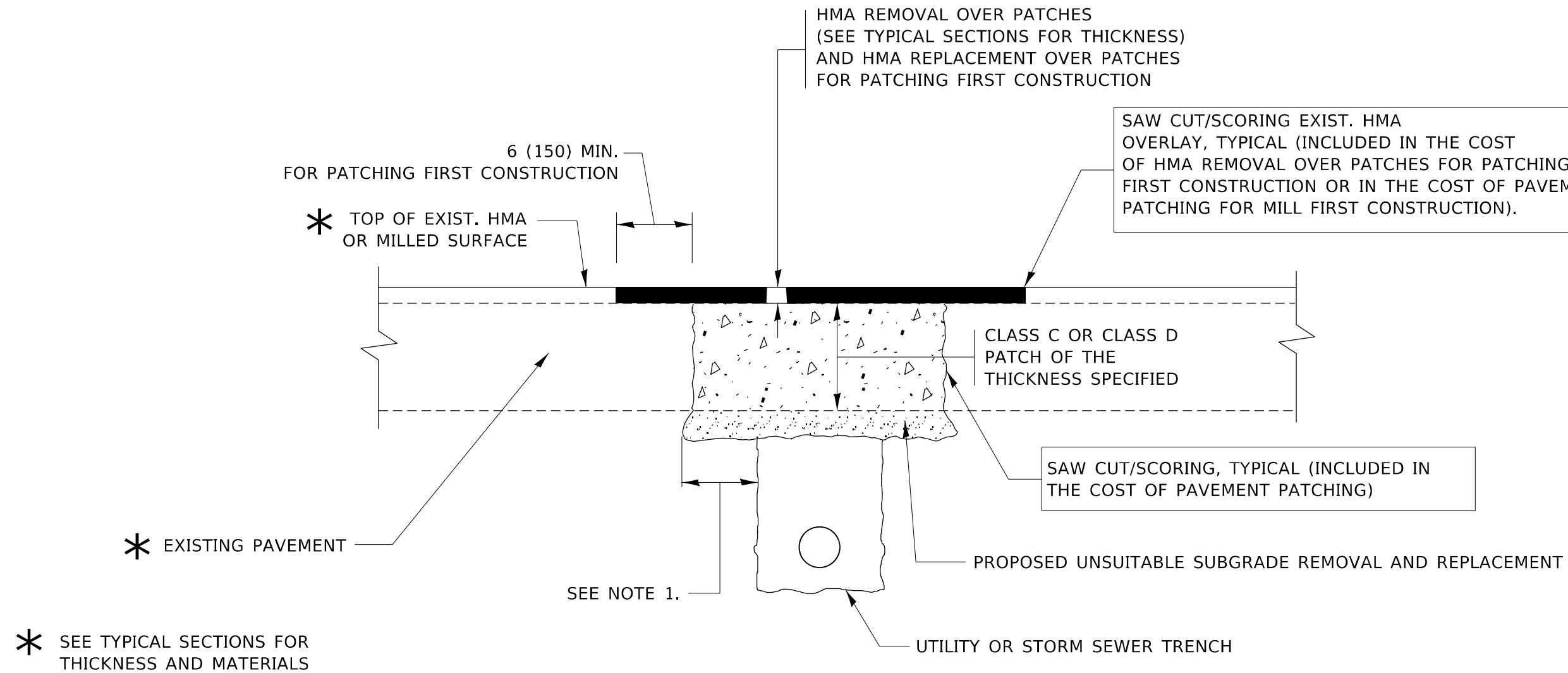
| | | |
|------------------------------|--------------------|-------------------------------|
| USER NAME = paraynoal | DESIGNED - R. SHAH | REVISED - R. WEDEMAN 05-14-04 |
| | DRAWN - | REVISED - R. BORO 01-01-07 |
| PLOT SCALE = 100,0000' / in. | CHECKED - | REVISED - R. BORO 03-09-11 |
| PLOT DATE = 8/11/2021 | DATE - 10-25-94 | REVISED - R. BORO 12-06-11 |

**STATE OF ILLINOIS
DEPARTMENT OF TRANSPORTATION**

**DETAILS FOR
FRAMES AND LIDS ADJUSTMENT WITH MILLING**

SCALE: NONE SHEET 1 OF 1 SHEETS STA. TO STA.

| F.A.P. RTE. | SECTION | COUNTY | TOTAL SHEETS | SHEET NO. |
|------------------------|-------------|--------------------|--------------|-----------|
| 358 | 2020-040-RS | COOK | 26 | 13 |
| BD600-03 (BD-8) | | CONTRACT NO. 62L12 | | |
| ILLINOIS | | FED. AID PROJECT | | |



NOTES:

1. THE WIDTH OF THE FULL DEPTH PATCH OVER A TRENCH SHALL BE 12 (300) WIDER ON EACH SIDE OF THE TRENCH.
2. FOR METHOD OF MEASUREMENT AND BASIS OF PAYMENT, SEE RECURRING SPECIAL PROVISION "PATCHING WITH HOT-MIX ASPHALT OVERLAY REMOVAL".

SEQUENCE OF CONSTRUCTION (PATCHING FIRST)

1. REMOVE THE EXISTING HMA MATERIAL OVER THE AREA TO BE PATCHED.
2. REMOVE AND REPLACE WITH CLASS C OR D PATCH.
3. REPLACE HMA MATERIAL OVER THE AREA TO BE PATCHED.

SEQUENCE OF CONSTRUCTION (MILLING FIRST)

1. MILL HMA FIRST IF THERE IS AT LEAST 4½ INCHES OR MORE OF HMA MATERIAL ON TOP OF THE EXISTING PAVEMENT OR IF THE PAVEMENT IS FULL DEPTH HMA. A MINIMUM OF 2 INCHES OF HMA MATERIAL SHALL BE IN PLACE AFTER MILLING.
2. REMOVE AND REPLACE WITH FULL DEPTH CLASS D PATCHES TO TOP OF MILLED SURFACE.

ALL DIMENSIONS ARE IN INCHES (MILLIMETERS) UNLESS OTHERWISE SHOWN.

MODEL: Default
FILE NAME: p:\pub\harrington.edu\illinois.gov\PWIDOT\Documents\DOT_Offices\Bartlett_1\Project\142320\CADD\Design\Design\DESIGN.dgn

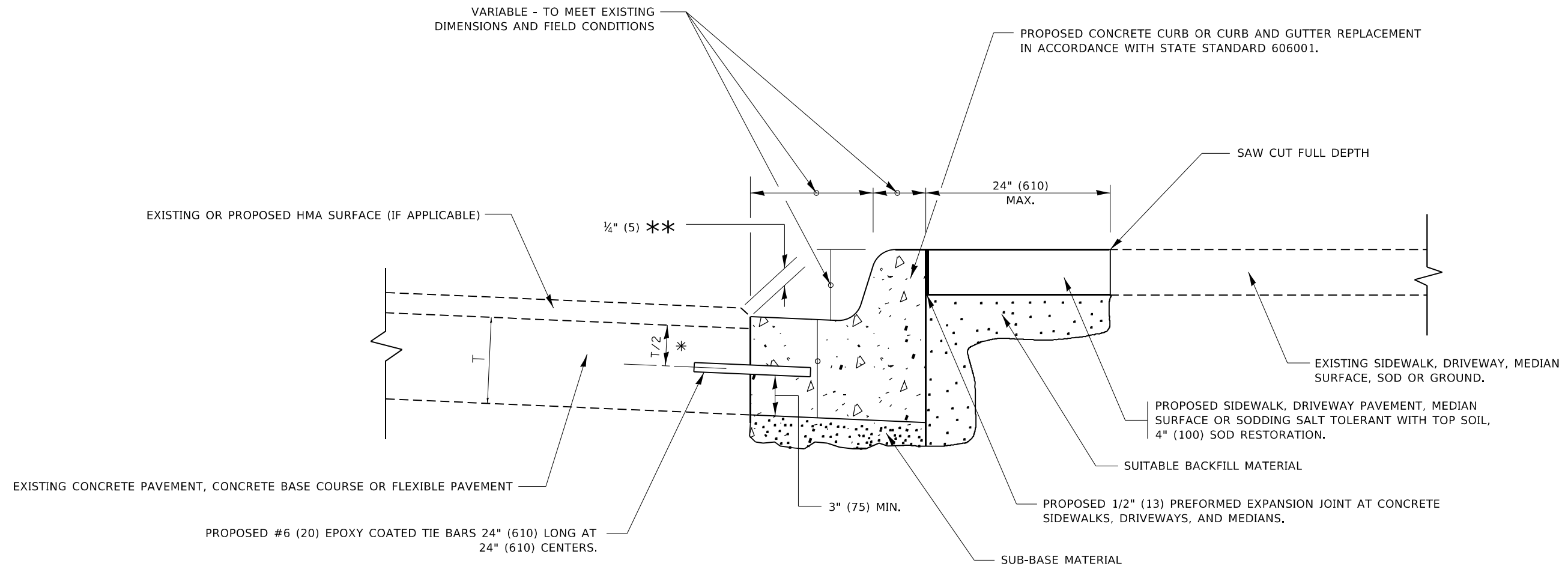
| | | |
|------------------------------|--------------------|-----------------------------|
| USER NAME = paraynoal | DESIGNED - R. SHAH | REVISED - A. ABBAS 04-27-98 |
| | DRAWN - | REVISED - R. BORO 01-01-07 |
| PLOT SCALE = 100,0000' / in. | CHECKED - | REVISED - R. BORO 09-04-07 |
| PLOT DATE = 8/11/2021 | DATE - 10-25-94 | REVISED - K. ENG 10-27-08 |

STATE OF ILLINOIS
DEPARTMENT OF TRANSPORTATION

PAVEMENT PATCHING FOR
HMA SURFACED PAVEMENT

SCALE: NONE SHEET 1 OF 1 SHEETS STA. TO STA.

| F.A.P. RTE. | SECTION | COUNTY | TOTAL SHEETS | SHEET NO. |
|---------------------------|-------------|--------------------|--------------|-----------|
| 358 | 2020-040-R5 | COOK | 26 | 14 |
| BD400-04 (BD-22) | | CONTRACT NO. 62L12 | | |
| ILLINOIS FED. AID PROJECT | | | | |



- * 3" (75) MINIMUM FROM TOP AND BOTTOM OF THE CONCRETE PAVEMENT OR BASE COURSE.
- ** IF THE FINAL SURFACE OF THE PAVEMENT IS CONCRETE, THE GUTTER IS TO BE FLUSH WITH THE PAVEMENT.

CURB OR CURB AND GUTTER REMOVAL AND REPLACEMENT

ALL DIMENSIONS ARE IN INCHES (MILLIMETERS) UNLESS OTHERWISE SHOWN.

MODEL: Default
FILE NAME: p:\u0026amp;workroom.dwt\illinois.gov\PIWDOT\Documents\DOT_Offices\District 1\Projects\142320\CaddData\Design\DIS\54.dgn

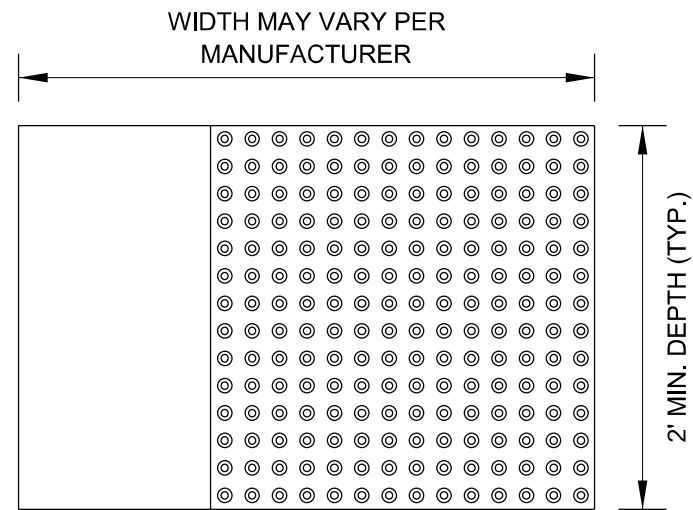
| | | |
|-------------------------------|----------------------|-----------------------------|
| USER NAME = paraynoal | DESIGNED - A. HOUSEH | REVISED - A. ABBAS 03-21-97 |
| | DRAWN - | REVISED - M. GOMEZ 01-22-01 |
| PLOT SCALE = 100,0000 ' / in. | CHECKED - | REVISED - R. BORO 12-15-09 |
| PLOT DATE = 8/11/2021 | DATE - 03-11-94 | REVISED - K. SMITH 07-11-19 |

**STATE OF ILLINOIS
DEPARTMENT OF TRANSPORTATION**

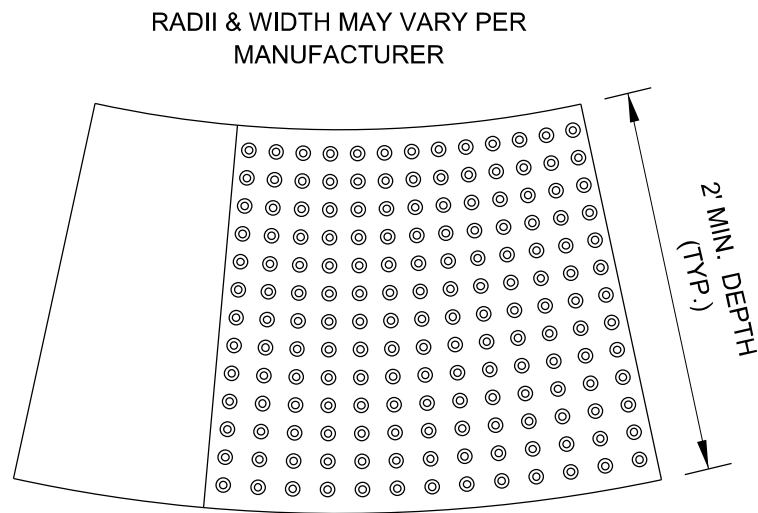
| | | | |
|--|---------|-------------|--------------|
| CURB OR CURB AND GUTTER REMOVAL AND REPLACEMENT | | | |
| SCALE: NONE | SHEET 1 | OF 1 SHEETS | STA. TO STA. |

| F.A.P. RTE. | SECTION | COUNTY | TOTAL SHEETS | SHEET NO. |
|---------------------------|-------------|--------------------|--------------|-----------|
| 358 | 2020-040-R5 | COOK | 26 | 15 |
| BD600-06 (BD-24) | | CONTRACT NO. 62L12 | | |
| ILLINOIS FED. AID PROJECT | | | | |

STRAIGHT DETECTABLE WARNING UNITS



RADIAL DETECTABLE WARNING UNITS

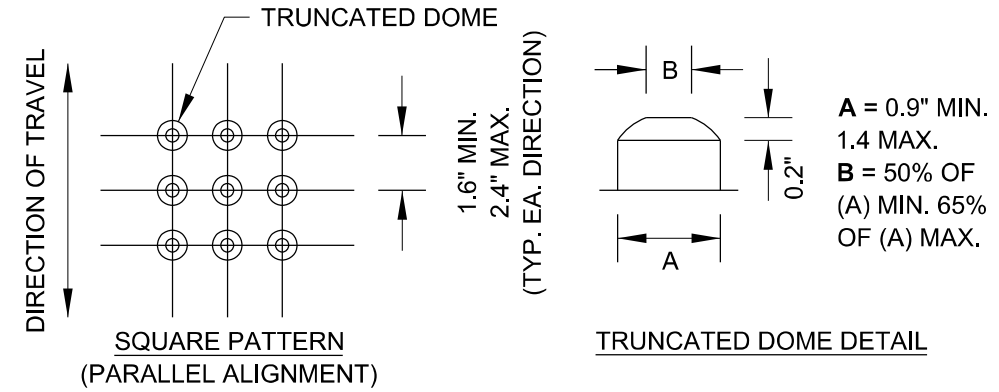


DETECTABLE WARNING UNIT SIZES

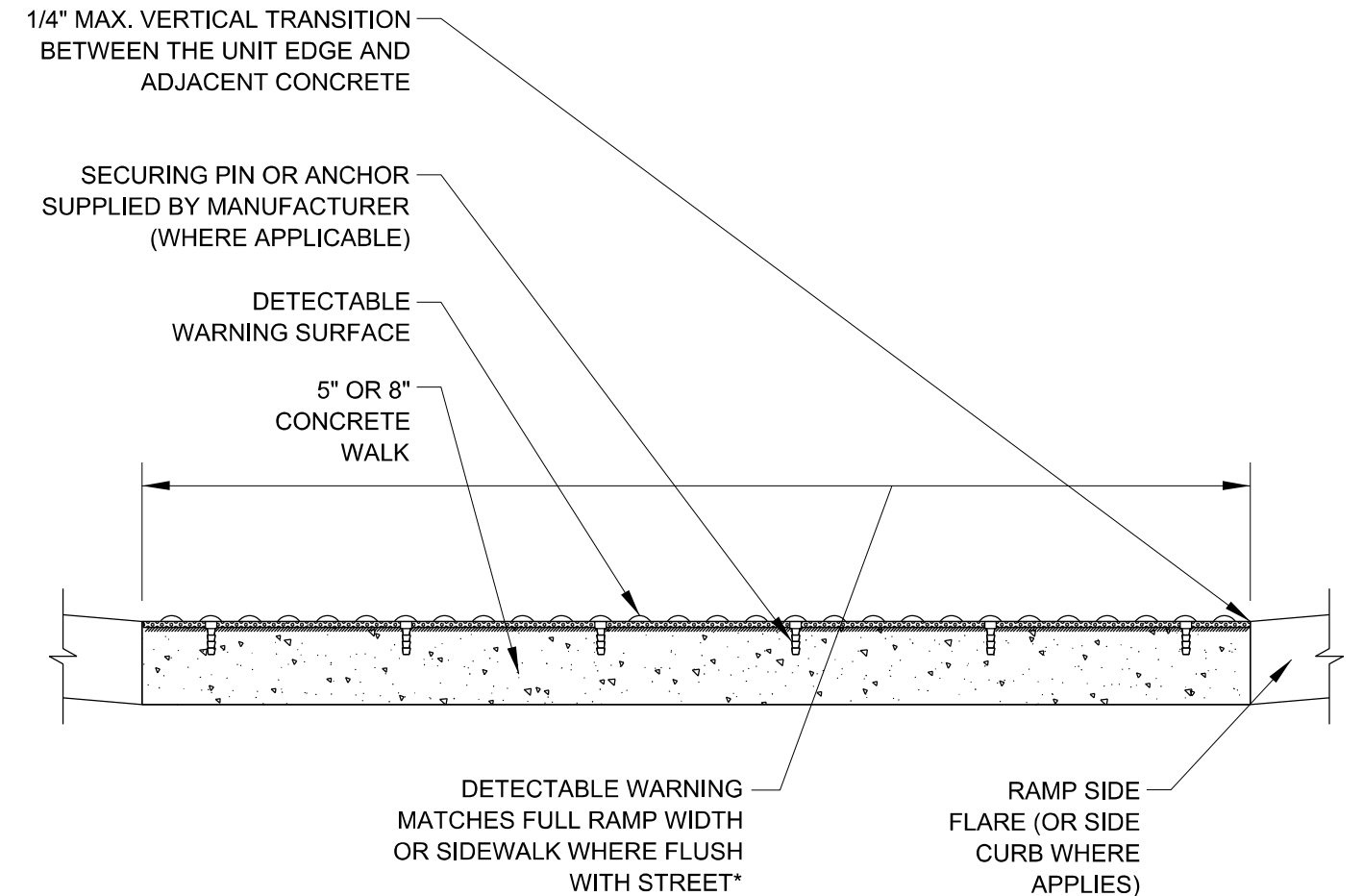
- VERIFY ALL DIMENSIONS WITH THE PRODUCT MANUFACTURER.
- IF USING RADIAL UNITS, VERIFY THAT THE CURB RADIUS MATCHES AVAILABLE UNIT RADII WITH THE PRODUCT MANUFACTURER.

GENERAL NOTE:

THE ROWS OF DOMES IN THE DETECTABLE WARNING MATERIAL MUST BE ALIGNED WITH THE PATH OF WHEELCHAIR TRAVEL WHICH IS REQUIRED TO BE PERPENDICULAR TO THE GRADE BREAK AT THE BOTTOM OF THE RAMP TO PERMIT TRACKING BETWEEN DOME ROWS. ON BLENDED TRANSITIONS OR FLUSH TRANSITIONS, WHERE RADIAL UNITS ARE SITUATED ABOUT THE CURB RADIUS, DOME ORIENTATION IS NOT SIGNIFICANT.



UNIT PATTERN & DOME DETAIL



*A BORDER OF 2 INCHES OR LESS AROUND THE DETECTABLE WARNING SURFACE IS ACCEPTABLE IF REQUIRED FOR PROPER INSTALLATION OF THE DETECTABLE WARNING SURFACE PRODUCT

DETECTABLE WARNING UNIT SECTION

MODEL: Default
FILE NAME: p:\pub\amr\room.dwg
PROJECT: 2020-040-RS
PROJECT DATE: 8/11/2021
PROJECT DESCRIPTION: 2020-040-RS
PROJECT LOCATION: COOK COUNTY
PROJECT DRAWN BY: paraynoal
PROJECT CHECKED BY: paraynoal
PROJECT DATE: 8/11/2021

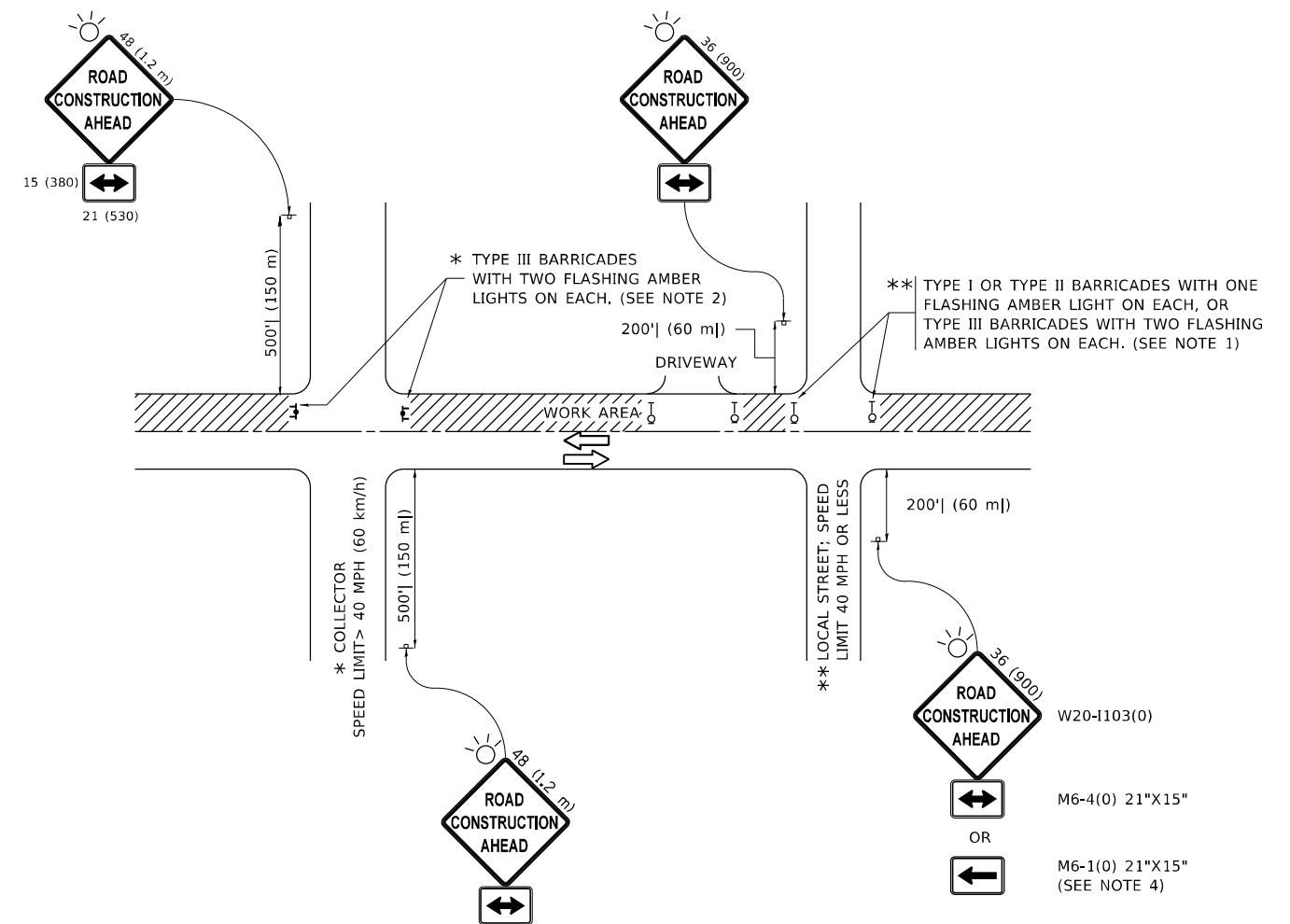
| | | |
|------------------------------|-------------------|-----------|
| USER NAME = paraynoal | DESIGNED - | REVISED - |
| | DRAWN - | REVISED - |
| PLOT SCALE = 100,0000' / in. | CHECKED - | REVISED - |
| PLOT DATE = 8/11/2021 | DATE - 06-20-2017 | REVISED - |

STATE OF ILLINOIS
DEPARTMENT OF TRANSPORTATION

CITY OF CHICAGO
DETECTABLE WARNINGS

SCALE: NONE SHEET 1 OF 1 SHEETS STA. TO STA.

| | | | | |
|---------------------------|---------------------|--------------------|-----------------|--------------|
| F.A.P. RTE. 358 | SECTION 2020-040-RS | COUNTY COOK | TOTAL SHEETS 26 | SHEET NO. 17 |
| BD 58 | | CONTRACT NO. 62L12 | | |
| ILLINOIS FED. AID PROJECT | | | | |



NOTES:

1. SIDE ROAD WITH A SPEED LIMIT OF 40 MPH (60 km/h) OR LESS AS SHOWN ON THE DRAWING AND AS DIRECTED BY THE ENGINEER:
 - a) ONE "ROAD CONSTRUCTION AHEAD" SIGN 36 x 36 (900x900) WITH A FLASHER MOUNTED ON IT APPROXIMATELY 200' (60 m) IN ADVANCE OF THE MAIN ROUTE.
 - b) THE CLOSED PORTION OF THE MAIN ROUTE SHALL BE PROTECTED BY BLOCKING WITH TYPE I, TYPE II OR TYPE III BARRICADES, 1/3 OF THE CROSS SECTION OF THE CLOSED PORTION.
2. SIDE ROAD WITH A SPEED LIMIT GREATER THAN 40 MPH (60 km/h) AS SHOWN ON THE DRAWING AND AS DIRECTED BY THE ENGINEER:
 - a) ONE "ROAD CONSTRUCTION AHEAD" SIGN 48 x 48 (1.2 m x 1.2 m) WITH A FLASHER MOUNTED ON IT APPROXIMATELY 500' (150 m) IN ADVANCE OF THE MAIN ROUTE.
 - b) BLOCKING WITH TYPE III BARRICADES, 1/2 OF THE CROSS SECTION OF THE CLOSED PORTION.
3. CONES MAY BE SUBSTITUTED FOR BARRICADES OR DRUMS AT HALF THE SPACING DURING DAY OPERATIONS. CONES SHALL BE A MINIMUM OF 28 (710) IN HEIGHT.
4. SIGNING AND THE WORK ZONE, A SINGLE HEADED ARROW (M6-1) SHALL BE USED IN LIEU OF THE DOUBLE HEADED ARROW (M6-4).
5. WHEN WORK IS BEING PERFORMED ON A SIDE ROAD OR DRIVEWAY, FOLLOW THE APPLICABLE STANDARD(S). THE DIRECTIONAL ARROW (M6-1 OR M6-4) SHALL BE COVERED OR REMOVED WHEN NO LONGER CONSISTENT WITH THE TRAFFIC CONTROL SET-UP.
6. ADVANCE WARNING SIGNS ARE TO BE OMITTED ON DRIVEWAYS UNLESS OTHERWISE SPECIFIED IN THE PLANS OR BY THE ENGINEER.
7. THE TRAFFIC CONTROL AND PROTECTION FOR SIDE ROADS, INTERSECTIONS, AND DRIVEWAYS SHALL BE INCLUDED IN THE COST OF SPECIFIED TRAFFIC CONTROL STANDARDS OR ITEMS.

All dimensions are in inches (millimeters) unless otherwise shown.

MODEL: Default
 FILE NAME: p:\pub\mroom.edu\illinois.gov\PWIDOT\Documents\DOT_Offices\Distrefc_1\Project\ID142320\CADDData\Design\Distrefc.dgn

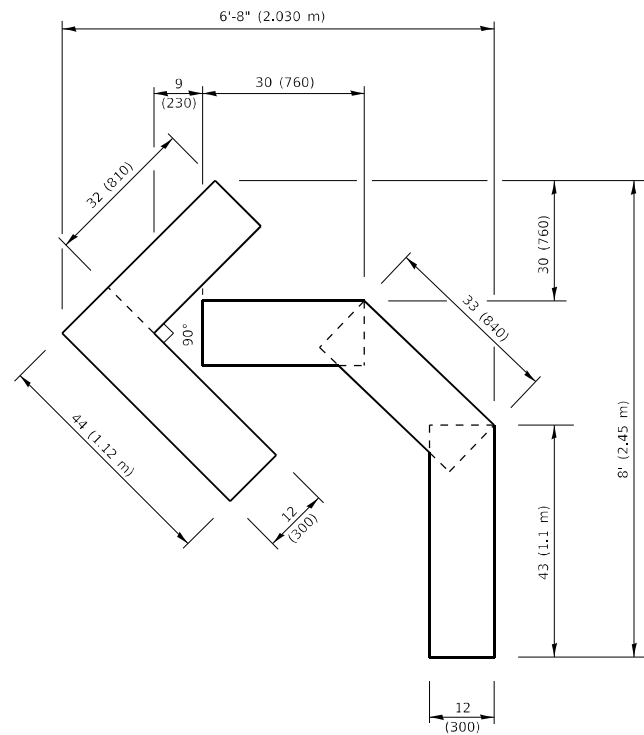
| | | |
|------------------------------|-------------------|---------------------------------|
| USER NAME = paraynoal | DESIGNED - L.H.A. | REVISED - A. HOUSEH 10-15-96 |
| PLOT SCALE = 100,0000' / in. | CHECKED - | REVISED - T. RAMMACHER 01-06-00 |
| PLOT DATE = 8/11/2021 | DATE - 06-89 | REVISED - A. SCHUETZE 07-01-13 |
| | | REVISED - A. SCHUETZE 09-15-16 |

**STATE OF ILLINOIS
DEPARTMENT OF TRANSPORTATION**

**TRAFFIC CONTROL AND PROTECTION FOR
SIDE ROADS, INTERSECTIONS, AND DRIVEWAYS**

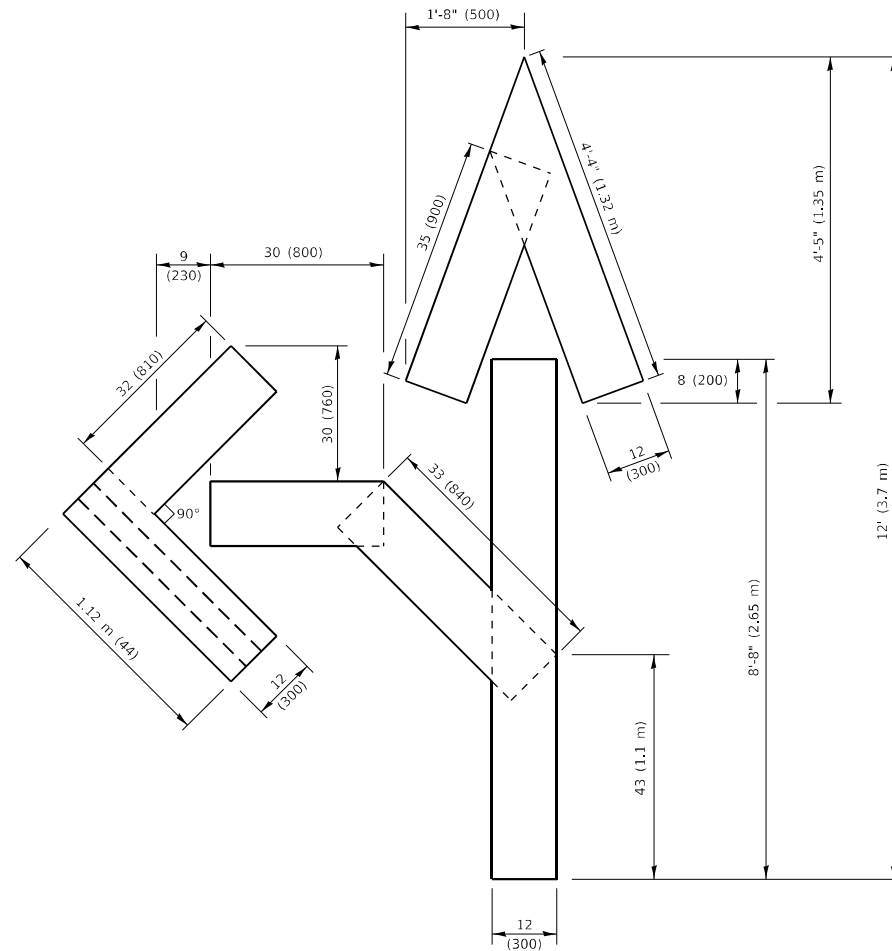
SCALE: NONE SHEET 1 OF 1 SHEETS STA. TO STA.

| F.A.P. RTE. | SECTION | COUNTY | TOTAL SHEETS | SHEET NO. |
|---------------------------|-------------|--------|--------------------|-----------|
| 358 | 2020-040-RS | COOK | 26 | 18 |
| TC-10 | | | CONTRACT NO. 62L12 | |
| ILLINOIS FED. AID PROJECT | | | | |



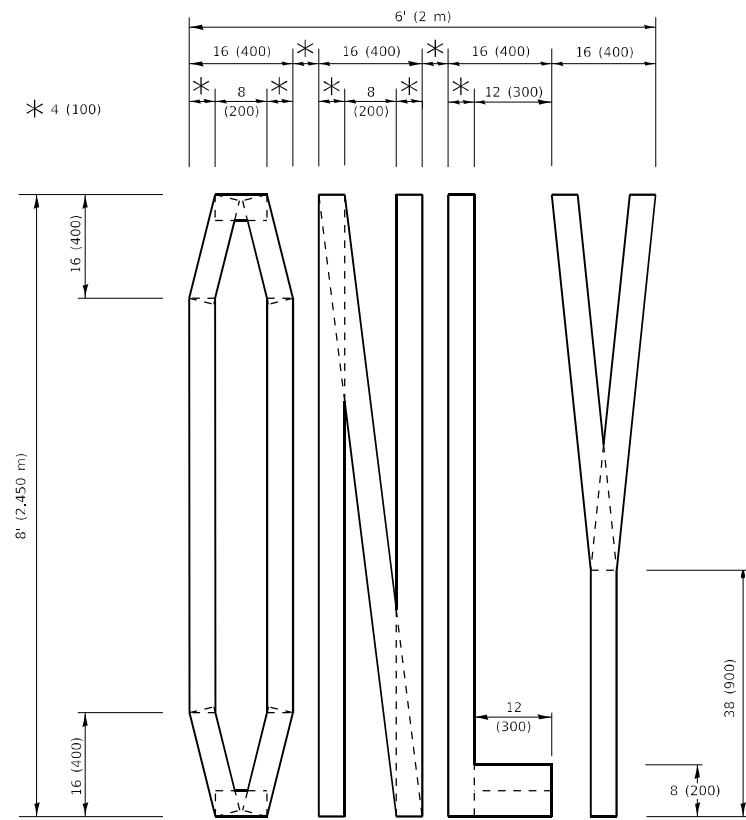
QUANTITY

4 (100) LINE = 45.5 ft. (13.9 m)
15.2 sq. ft. (1.41 sq. m)



QUANTITY

4 (100) LINE = 82.5 ft. (25.1 m)
27.5 sq. ft. (2.53 sq. m)

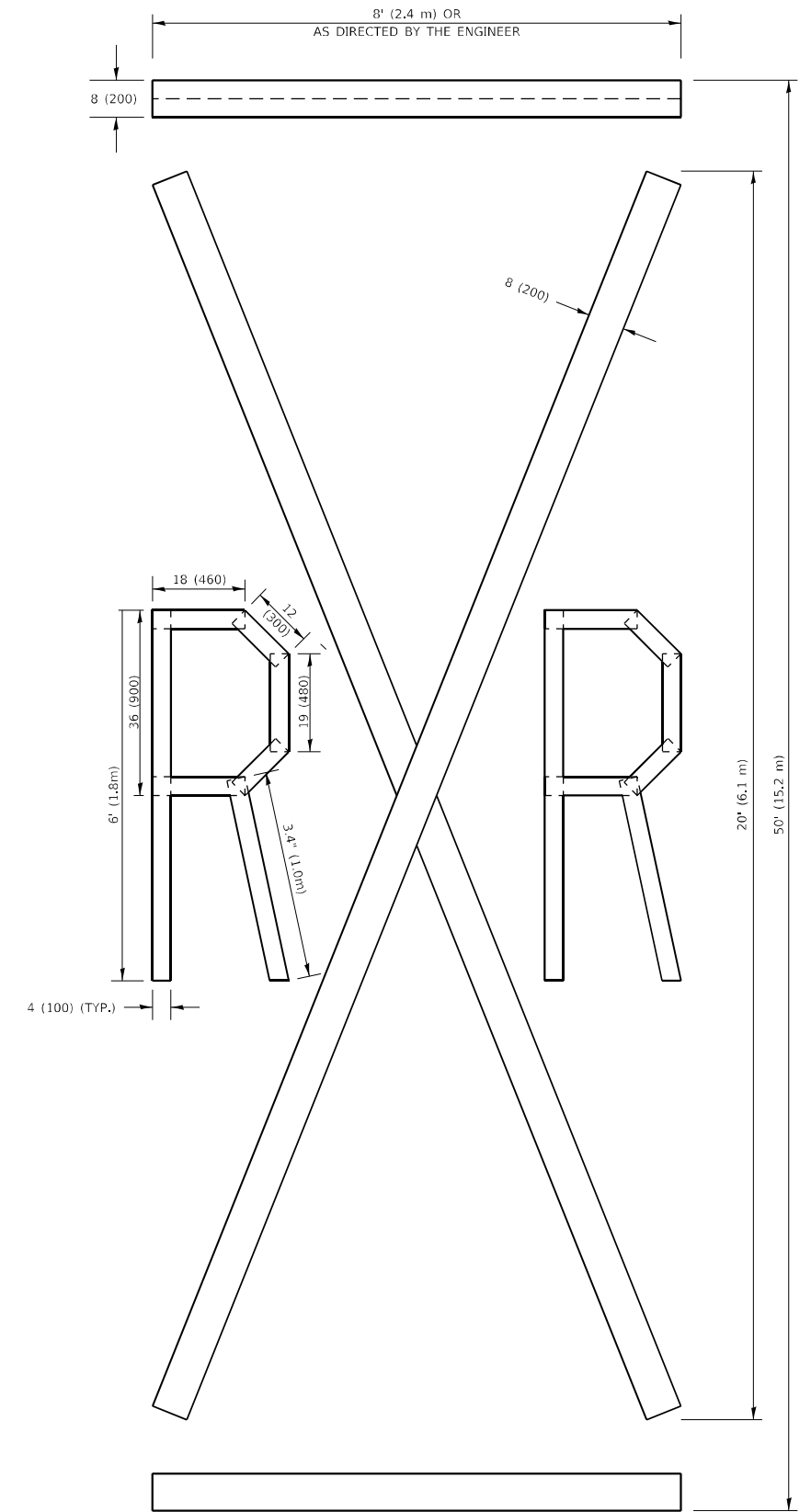


QUANTITY

4 (100) LINE = 64.1 ft. (19.5 m)
21.4 sq. ft. (1.99 sq. m)

NOTE:

ALL QUANTITIES OF PLACEMENT ARE REPRESENTED IN LINEAR FEET OF 4" LINES TO MATCH THE 4" TEMPORARY TAPE PAY ITEM AND REPRESENTS THE TOTAL QUANTITY OF 4" TAPE REQUIRED.



QUANTITY

4 (100) LINE = 225.9 ft. (68.9 m)
75.3 sq. ft. (6.99 sq. m)

All dimensions are in inches (millimeters) unless otherwise shown.

MODEL: Default
FILE NAME: p:\pub\marron.dwg
PROJECT: 142320\CADDData\Design\DS54.dwg

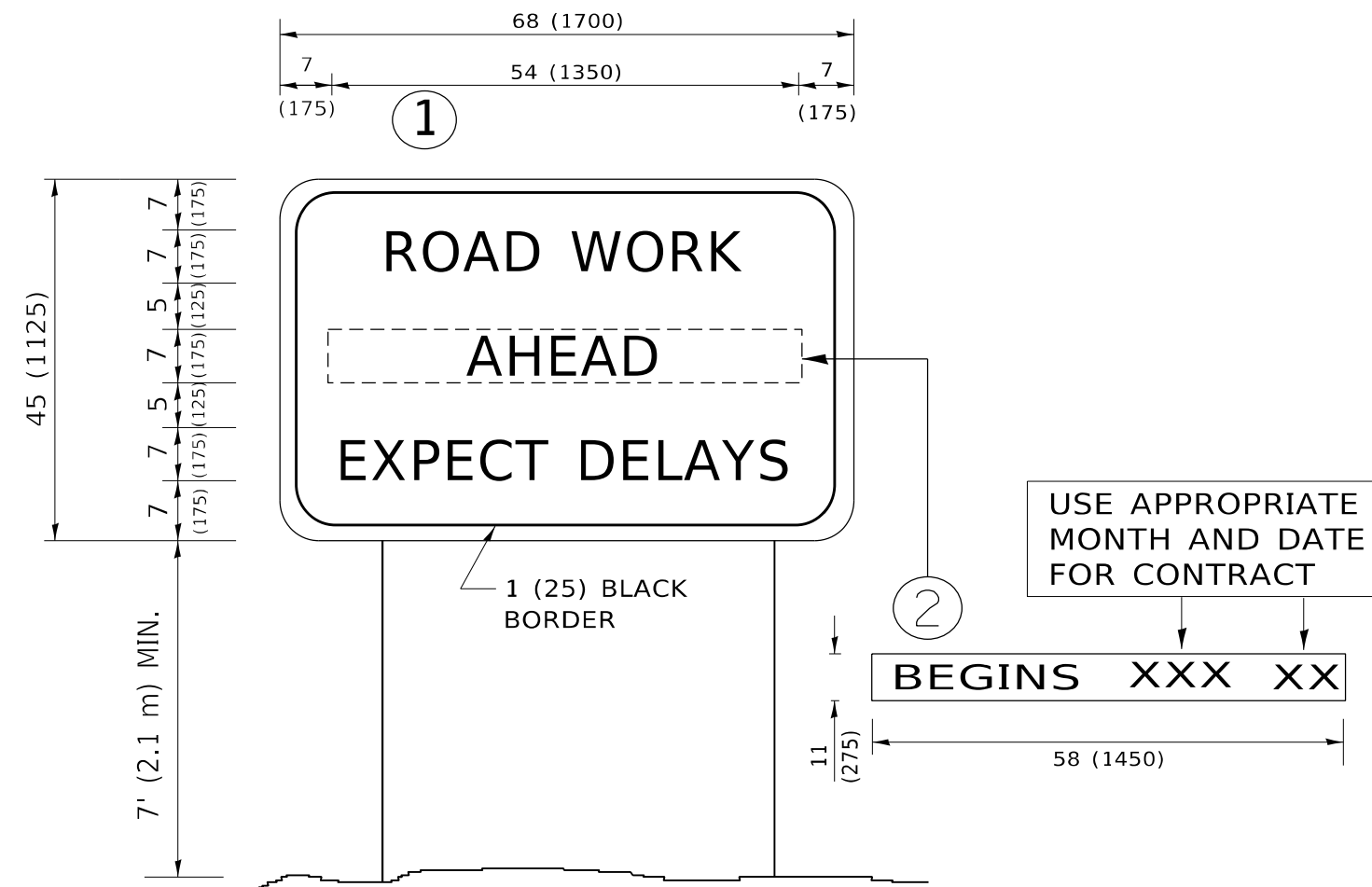
| | | |
|-------------------------------|-----------------|---------------------------------|
| USER NAME = paraynoal | DESIGNED - | REVISED - T. RAMMACHER 03-02-98 |
| PLOT SCALE = 100,0000 ' / in. | DRAWN - | REVISED - E. GOMEZ 08-28-00 |
| PLOT DATE = 8/11/2021 | CHECKED - | REVISED - E. GOMEZ 08-28-00 |
| | DATE - 09-18-94 | REVISED - A. SCHUETZE 09-15-16 |

**STATE OF ILLINOIS
DEPARTMENT OF TRANSPORTATION**

SHORT TERM PAVEMENT MARKING LETTERS AND SYMBOLS

SCALE: NONE SHEET 1 OF 1 SHEETS STA. TO STA.

| F.A.P. RTE. | SECTION | COUNTY | TOTAL SHEETS | SHEET NO. |
|---------------------------|-------------|--------------------|--------------|-----------|
| 358 | 2020-040-RS | COOK | 26 | 19 |
| TC-16 | | CONTRACT NO. 62L12 | | |
| ILLINOIS FED. AID PROJECT | | | | |



NOTES:

1. USE BLACK LETTERING ON ORANGE BACKGROUND.
2. ERECT SIGNS IN ADVANCE OF THE LOCATION FOR THE "ROAD CONSTRUCTION AHEAD" SIGN AT LOCATIONS AS DIRECTED BY THE ENGINEER.
3. ERECT SIGN ① WITH INSTALLED PANEL ② ONE WEEK PRIOR TO THE START OF CONSTRUCTION.
4. REMOVE PANEL ② SOON AFTER THE START OF CONSTRUCTION.
5. SEE SPECIAL PROVISION FOR "TEMPORARY INFORMATION SIGNING" FOR ADDITIONAL INFORMATION.
6. ONE SIGN ASSEMBLY EQUALS 25.70 SQ. FT. (2.3 SQ. M.)
7. SHALL BE PAID FOR AS TEMPORARY INFORMATION SIGNING.

ALL DIMENSIONS ARE IN INCHES (MILLIMETERS) UNLESS OTHERWISE SHOWN.

MODEL: Default
 FILE NAME: p:\pub\mroom.dwt\illinois.gov\PWIDOT\Documents\DOT_Office\Distric. 1\Project\142320\CADDData\Design\Dist5.dgn

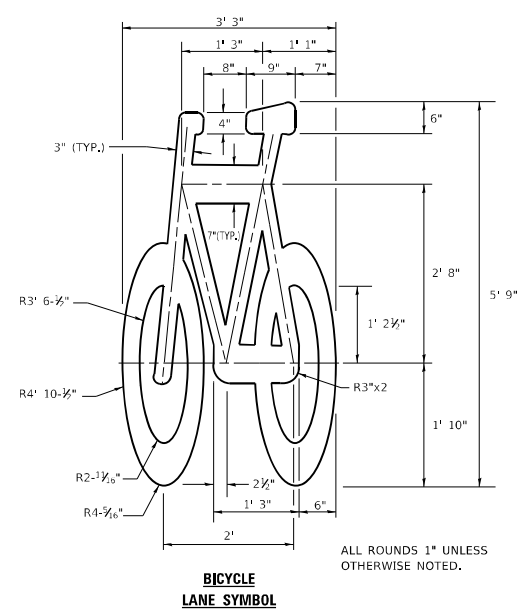
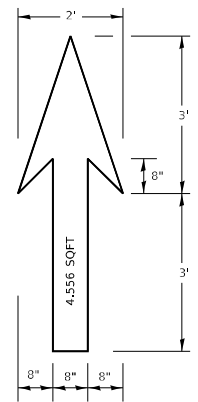
| | | |
|-------------------------------|------------|---------------------------------|
| USER NAME = paraynoal | DESIGNED - | REVISED - R. MIRS 09-15-97 |
| | DRAWN - | REVISED - R. MIRS 12-11-97 |
| PLOT SCALE = 100,0000 ' / in. | CHECKED - | REVISED - T. RAMMACHER 02-02-99 |
| PLOT DATE = 8/11/2021 | DATE - | REVISED - C. JUCIUS 01-31-07 |

**STATE OF ILLINOIS
DEPARTMENT OF TRANSPORTATION**

**ARTERIAL ROAD
INFORMATION SIGN**

SCALE: NONE SHEET 1 OF 1 SHEETS STA. TO STA.

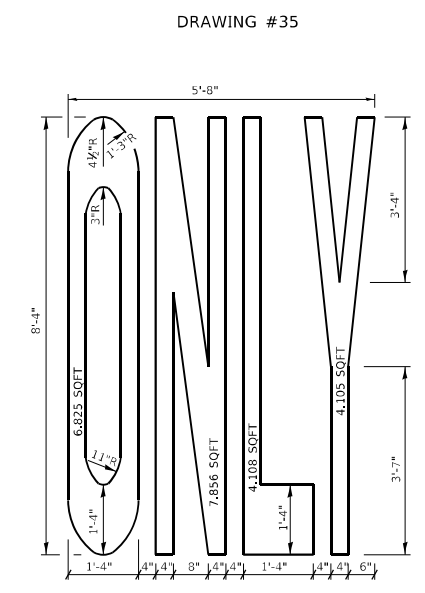
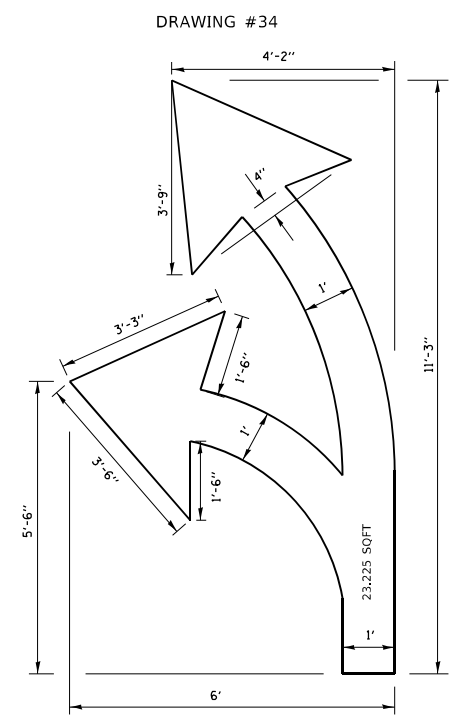
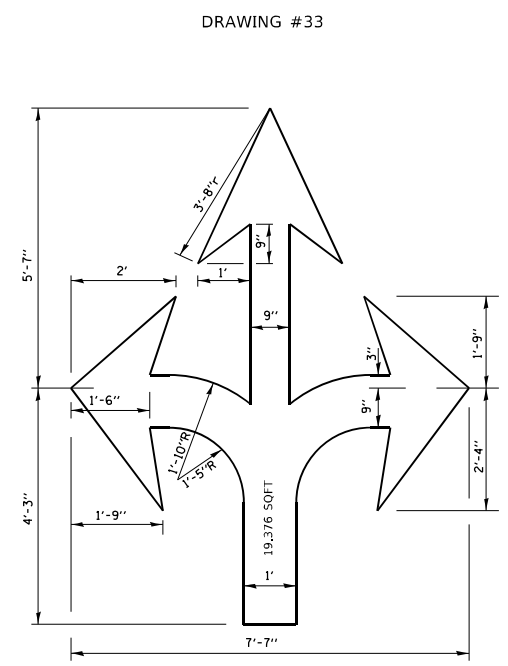
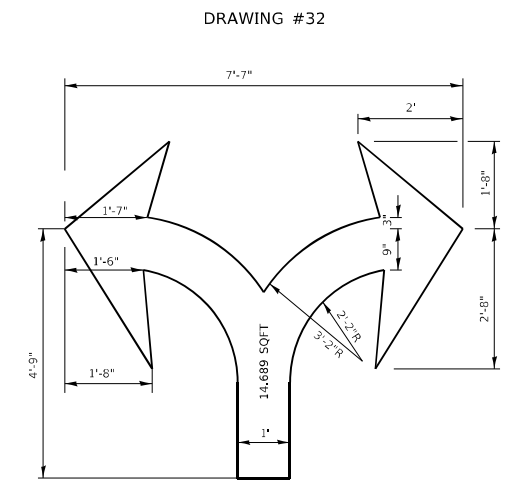
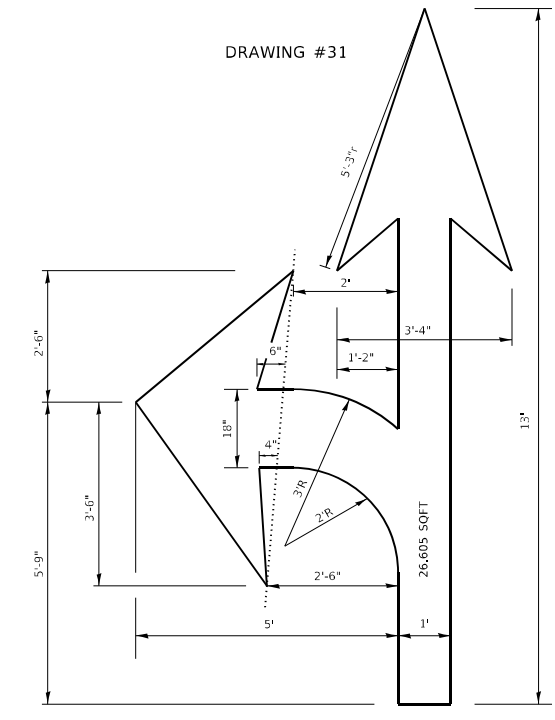
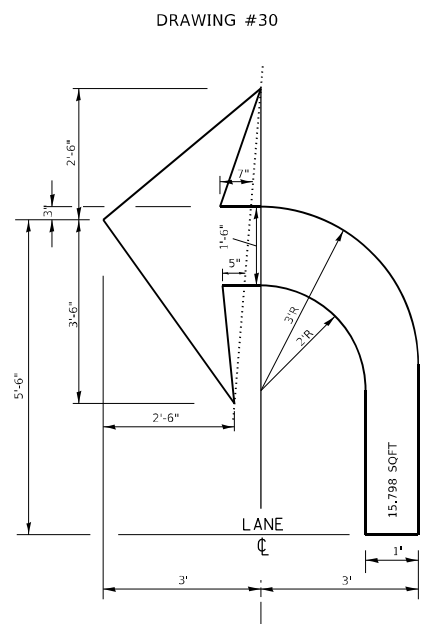
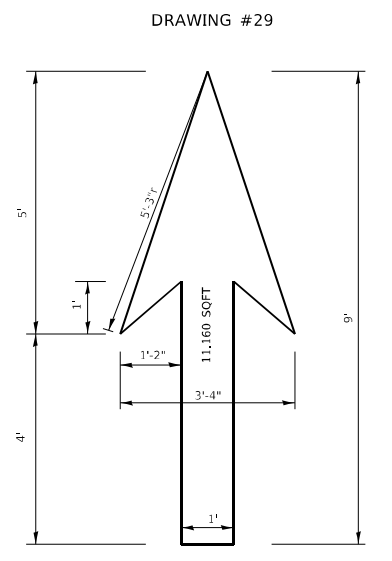
| F.A.P. RTE. | SECTION | COUNTY | TOTAL SHEETS | SHEET NO. |
|---------------------------|-------------|--------|--------------------|-----------|
| 358 | 2020-040-R5 | COOK | 26 | 20 |
| TC-22 | | | CONTRACT NO. 62L12 | |
| ILLINOIS FED. AID PROJECT | | | | |



**BICYCLE
LANE SYMBOL**

- NOTE:**
1. FOR BIKE LANE SYMBOLS ONLY, USE PRE-FORMED THERMOPLASTIC WITH A MINIMUM THICKNESS OF 90 MILS, MINIMUM SKID RESISTANCE VALUE OF 60 BPN, & A MINIMUM INDEX OF REFRACTION OF 1.50.
 2. THE RESIDENT ENGINEER SHALL CONTACT MR. BEN GOMBERG AT 312-744-8093 AT LEAST ONE CALENDAR WEEK PRIOR TO INSTALLING BIKE LANE SYMBOLS.

**TYPICAL BIKE LANE SYMBOLS
DRAWING #28**



NOTE:
ALL MARKINGS SHALL BE SOLID WHITE UNLESS OTHERWISE NOTED IN THE PLANS

MODEL: Default
 FILE NAME: p:\planningroom\dot\illinois\dot\Documents\DOT_Office\Drawings\1\Projects\142320\CaddData\Design\DS154.dgn

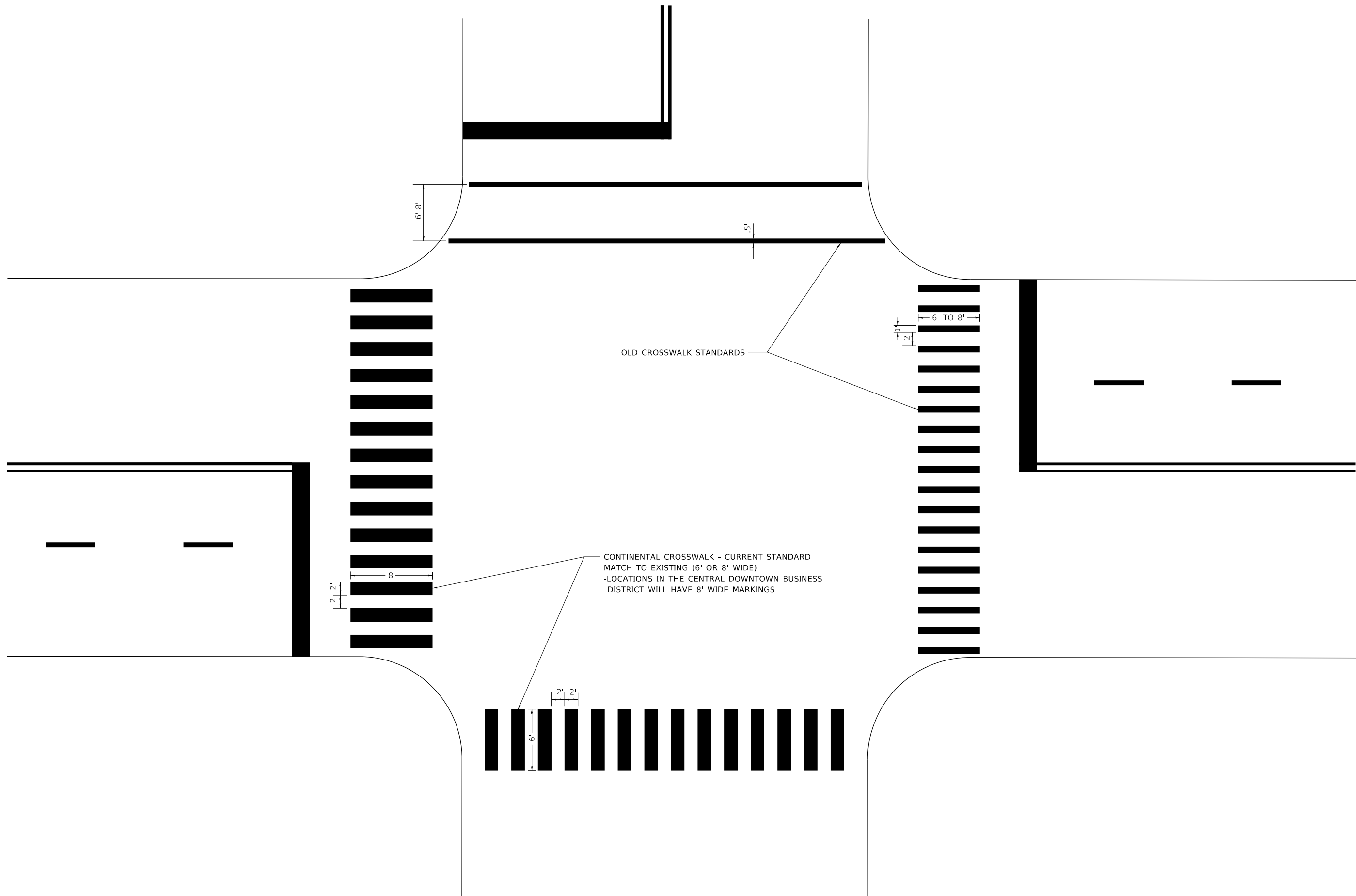
| | | |
|------------------------------|------------|---------------------------------|
| USER NAME = paraynoal | DESIGNED - | REVISED - T. RAMMACHER 12-07-00 |
| PLOT SCALE = 100,0000' / in. | DRAWN - | REVISED - |
| PLOT DATE = 8/11/2021 | CHECKED - | REVISED - |
| | DATE - | REVISED - |

**STATE OF ILLINOIS
DEPARTMENT OF TRANSPORTATION**

| | | | |
|--|---------|-------------|--------------|
| CITY OF CHICAGO TYPICAL PAVEMENT MARKINGS | | | |
| SCALE: NONE | SHEET 2 | OF 3 SHEETS | STA. TO STA. |

| | | | | |
|--------------|-------------|--------------------|--------------|-----------|
| F.A.P. RTE. | SECTION | COUNTY | TOTAL SHEETS | SHEET NO. |
| 358 | 2020-040-RS | COOK | 26 | 22 |
| TC-24 | | CONTRACT NO. 62L12 | | |
| ILLINOIS | | FED. AID PROJECT | | |

MODEL: Default
 FILE NAME: p:\planningroom.dwg
 PROJECT: 142320\CaddData\Design\Dis54.dgn



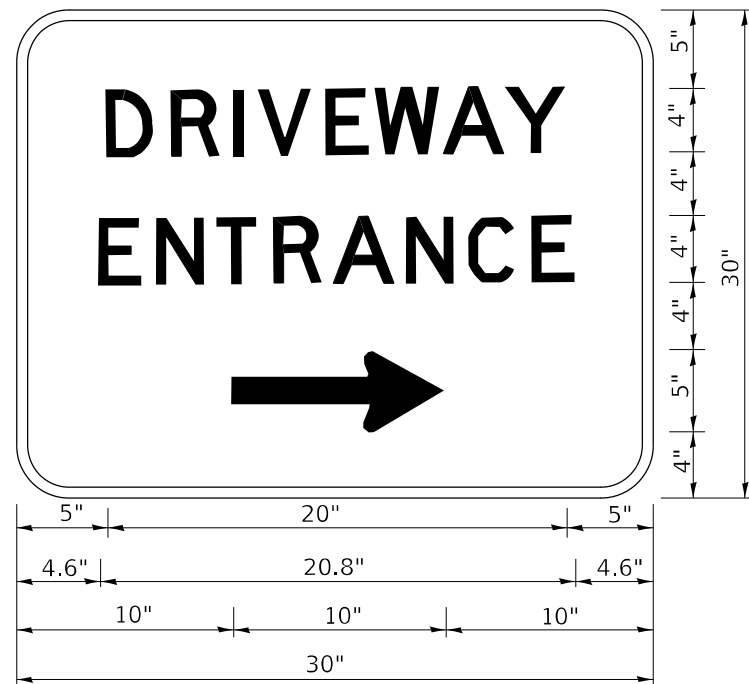
| | | |
|------------------------------|------------|---------------------------------|
| USER NAME = paraynoal | DESIGNED - | REVISED - T. RAMMACHER 12-07-00 |
| PLOT SCALE = 100,0000' / in. | DRAWN - | REVISED - |
| PLOT DATE = 8/11/2021 | CHECKED - | REVISED - |
| | DATE - | REVISED - |

**STATE OF ILLINOIS
 DEPARTMENT OF TRANSPORTATION**

**CITY OF CHICAGO
 TYPICAL PAVEMENT MARKINGS**

SCALE: NONE SHEET 3 OF 3 SHEETS STA. TO STA.

| F.A.P. RTE. | SECTION | COUNTY | TOTAL SHEETS | SHEET NO. |
|---------------------------|-------------|--------------------|--------------|-----------|
| 358 | 2020-040-R5 | COOK | 26 | 23 |
| TC-24 | | CONTRACT NO. 62L12 | | |
| ILLINOIS FED. AID PROJECT | | | | |



3.0" RADIUS, 0.5" BORDER, WHITE ON GREEN; REFLECTORIZED
 "DRIVEWAY" D; "ENTRANCE" D; STANDARD ARROW CUSTOM 12.0" x 5.0"

NOTES:

1. HALF OF THE SIGNS WILL REQUIRE A LEFT HAND FACING ARROW.
2. TWO SIGNS SHALL BE USED AT EACH COMMERCIAL ENTRANCE PLACED BACK-TO-BACK: ONE WITH A RIGHT HAND ARROW (SHOWN) SHALL BE PLACED ON THE NEAR RIGHT SIDE THE DRIVEWAY AND ONE WITH A LEFT HAND ARROW SHALL BE PLACED ON THE FAR LEFT SIDE OF THE DRIVEWAY.
3. SIGNS TO BE PAID FOR AS ITEM "TEMPORARY INFORMATION SIGNING".

MODEL: Default
 FILE NAME: p:\pub\harrington.edu\illinois.gov\PWIDOT\Documents\DOT_Offices\Distrefc_1\Projects\ID142320\CADD\Data\Design\Distrefc.dgn

| | | |
|------------------------------|------------|------------------------------|
| USER NAME = paraynoal | DESIGNED - | REVISED - C. JUCIUS 02-15-07 |
| | DRAWN - | REVISED - |
| PLOT SCALE = 100,0000' / in. | CHECKED - | REVISED - |
| PLOT DATE = 8/11/2021 | DATE - | REVISED - |

**STATE OF ILLINOIS
 DEPARTMENT OF TRANSPORTATION**

DRIVEWAY ENTRANCE SIGNING

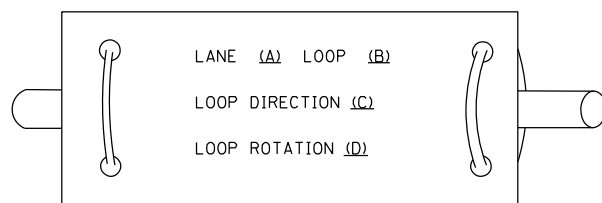
SCALE: NONE SHEET 1 OF 1 SHEETS STA. TO STA.

| F.A.P. RTE. | SECTION | COUNTY | TOTAL SHEETS | SHEET NO. |
|---------------------------|-------------|--------------------|--------------|-----------|
| 358 | 2020-040-R5 | COOK | 26 | 24 |
| TC-26 | | CONTRACT NO. 62L12 | | |
| ILLINOIS FED. AID PROJECT | | | | |

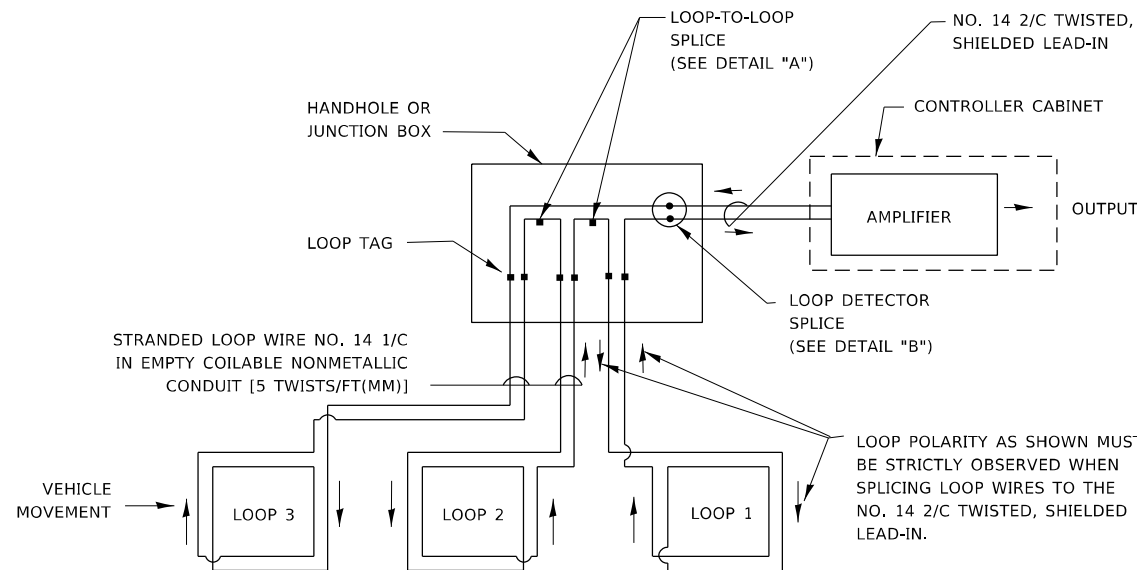
LOOP DETECTOR NOTES

1. EACH PAIR OF LOOP WIRES SHALL BE PLACED IN A SEPARATE EMPTY COILABLE NONMETALLIC CONDUIT FROM THE EDGE OF PAVEMENT TO THE HANDHOLE. SPACING BETWEEN THE HOLES DRILLED IN THE PAVEMENT SHALL NOT BE LESS THAN 6" (150 mm). EMPTY COILABLE NONMETALLIC CONDUIT SHALL BE INCLUDED IN THE COST OF THE LOOP WIRE.
2. THE NUMBER OF LOOP TURNS SHALL BE AS RECOMMENDED BY THE AMPLIFIER MANUFACTURER. ALL ADJACENT SIDES OF THE LOOPS SHALL BE INSTALLED IN SUCH A WAY THAT THE CURRENT FLOW IS IN THE SAME DIRECTION TO REINFORCE ITS MAGNETIC FIELDS FOR SMALL VEHICLE DETECTION.
3. EACH LOOP LEAD-IN SHALL BE IDENTIFIED AND PERMANENTLY TAGGED IN THE HANDHOLE. EACH LEAD-IN CABLE TAG SHALL INDICATE THE LOCATION OF THE LOOP, LOOP ROTATION (CLOCKWISE/COUNTERCLOCKWISE), LOOP LEAD-IN DIRECTION (IN OR OUT), LOOP CABLE NUMBER AND LOCATION IN CABINET, AND NUMBER OF TURNS IN THE DETECTOR LOOPS IN WATER PROOF INK AS INDICATED ON THE DISTRICT 1 STANDARD TRAFFIC SIGNAL DESIGN DETAIL. THE CONTRACTOR SHALL MARK LOOP LOCATIONS ON RECORD DRAWINGS AND PRESENT TO THE ENGINEER AFTER FINAL INSPECTION. LOOPS SHALL BE MARKED BY LANE AND LOOP NUMBER. SEE DETAIL BELOW.
4. ALL LOOP CABLE SHALL BE FASTENED WITH PLASTIC TIE WRAP TO THE HANDHOLE HOOKS.
5. IN ASPHALT PAVEMENT, LOOPS SHOULD BE PLACED IN THE BINDER AND DIVEHOLES MARKED AT THE CURB WITH A SAW-CUT. THE SAW-CUT SHALL BE CUT IN ACCORDANCE WITH LOCAL AND E.P.A. DUST CONTROL REQUIREMENTS. DETECTOR LOOP(S) SHALL NOT BE INSTALLED IN WET CONDITIONS AND THE SAW-CUTS MUST BE FREE OF DEBRIS AND RESIDUE SUCH AS DUST AND WATER WHICH IS TO BE ACHIEVED BY THE USE OF COMPRESSED AIR, WIRE BRUSHING AND HEAT DRYING ACCORDING TO SEALANT MANUFACTURER REQUIREMENTS. THE DETECTOR WIRE SHALL BE HELD IN PLACE BY THE USE OF FORM WEDGES. WEDGES SHALL BE SPACED NO MORE THAN 18" (450 mm) APART.
6. LOOP SPLICES SHALL BE SOLDERED USING A SOLDERING IRON. BLOW TORCHES OR OTHER DEVICES WHICH OXIDIZE COPPER CABLE SHALL NOT BE ALLOWED FOR SOLDERING OPERATIONS. SEE DETAIL BELOW RIGHT.
7. PREFORMED DETECTOR LOOPS SHALL BE USED, AS SHOWN ON THE PLANS, WHERE NEW CONCRETE PAVEMENT IS PROPOSED. THE INSTALLATION OF PREFORMED LOOPS SHALL BE IN ACCORDANCE WITH THE DISTRICT 1 SPECIFICATIONS OR AS DIRECTED BY THE ENGINEER.

LOOP LEAD-IN CABLE TAG

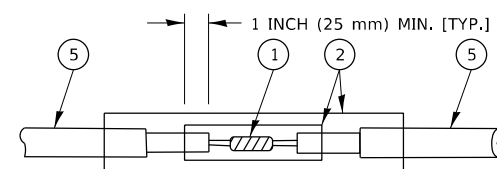


- A. LANE 1 IS THE LANE CLOSEST TO THE CENTERLINE OF THE ROADWAY
- B. LOOP #1 IS THE LOOP IN THE LANE CLOSEST TO THE INTERSECTION.
- C. LABEL LOOP CABLE "IN" OR LOOP CABLE "OUT".
- D. LABEL LOOP CABLE CLOCKWISE OR LOOP CABLE COUNTERCLOCKWISE.

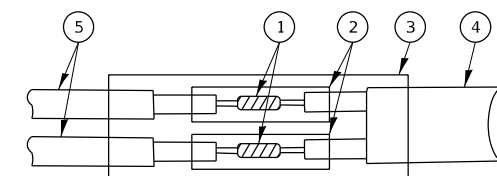


DETECTOR LOOP WIRING SCHEMATIC

- LOOPS SHALL BE SPLICED IN SERIES. SAW-CUTS SHALL BE A MINIMUM WIDTH OF 5/16" (8 mm).
- SAW-CUT DEPTHS SHALL BE 3" (75 mm), IF IN CONCRETE.
- THE SAW-CUT DEPTH SHALL BE TO THE TOP OF THE REINFORCEMENT.
- LOOP CORNERS SHALL BE DRILLED WITH A 2" (50 mm) DIAMETER CORE.

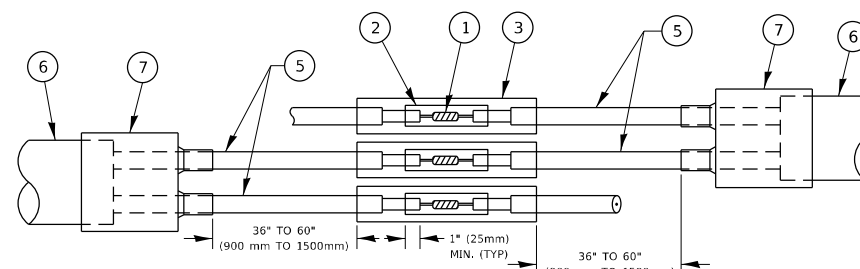


DETAIL "A"
LOOP-TO-LOOP SPLICE

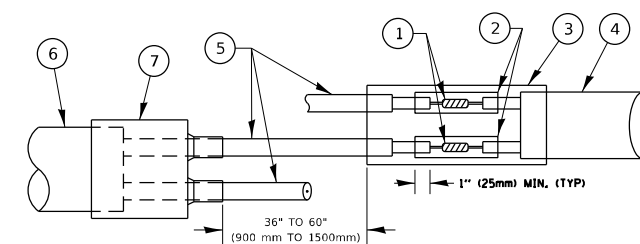


DETAIL "B"
LOOP-TO-CONTROLLER SPLICE

TYPE I LOOP



DETAIL "A"
LOOP-TO-LOOP SPLICE



DETAIL "B"
LOOP-TO-CONTROLLER SPLICE

PREFORMED LOOP

LOOP DETECTOR SPLICE

- ① WESTERN UNION SPLICE SOLDERED WITH ROSIN CORE FLUX. ALL EXPOSED SURFACES OF THE SOLDER SHALL BE SMOOTH. THE WESTERN UNION SPLICES SHALL BE STAGGERED.
- ② WCSMW 30/100 HEAT SHRINK TUBE, MINIMUM LENGTH 3" (75 mm), UNDERWATER GRADE.
- ③ WCS 200/750 HEAT SHRINK TUBE, MINIMUM LENGTH 6" (150 mm), UNDERWATER GRADE.
- ④ NO. 14 2/C TWISTED, SHIELDED CABLE.
- ⑤ LOOP CONDUCTOR WITH FLEXIBLE PLASTIC TUBE. PREFORMED LOOP
- ⑥ XL POLYOLEFIN 2 CONDUCTOR
- ⑦ BREAKOUT SEALS, TYCO CBR-2 OR APPROVED EQUAL

MODEL: Default
FILE NAME: p:\pub\mroom.edu\illinois.gov\PWIDOT\Documents\DOT_Office\Design\1\Project\142320\CADD\Design\Design\DS-54.dgn

| | | |
|------------------------------|------------|-----------|
| USER NAME = paraynoal | DESIGNED - | REVISED - |
| | DRAWN - | REVISED - |
| PLOT SCALE = 100,0000' / in. | CHECKED - | REVISED - |
| PLOT DATE = 8/11/2021 | DATE - | REVISED - |

**STATE OF ILLINOIS
DEPARTMENT OF TRANSPORTATION**

**DISTRICT ONE
STANDARD TRAFFIC SIGNAL DESIGN DETAILS**

SCALE: NONE SHEET 2 OF 7 SHEETS STA. TO STA.

| | | | | |
|---------------------------|---------------------|--------------------|-----------------|--------------|
| F.A.P. RTE. 358 | SECTION 2020-040-RS | COUNTY COOK | TOTAL SHEETS 26 | SHEET NO. 25 |
| TS-05 | | CONTRACT NO. 62L12 | | |
| ILLINOIS FED. AID PROJECT | | | | |

