

FOR INDEX OF SHEETS, SEE SHEET NO. 2

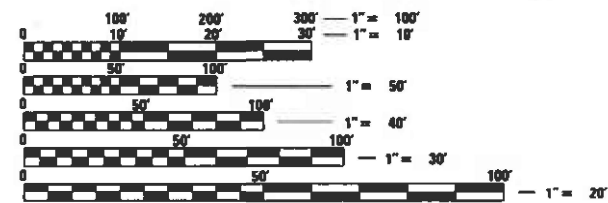
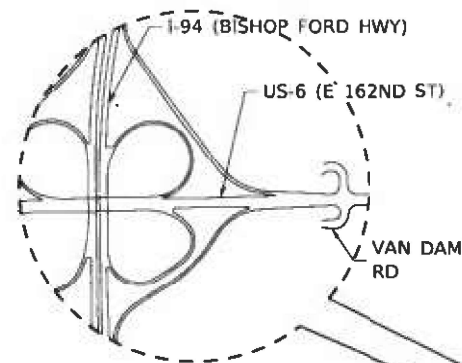
**TRAFFIC DATA**

	ADT	SPEED LIMIT
US 6 (162ND STREET) WEST OF I-94	33,700	35 MPH
US 6 (162ND STREET) EAST OF I-94	24,700	35 MPH
I-94 SOUTH OF US 6 (162ND STREET)	114,800	55 MPH
I-94 NORTH OF US 6 (162ND STREET)	136,100	55 MPH

**HIGHWAY FUNCTIONAL CLASSIFICATION**

US 6 (162ND STREET)	PRINCIPAL ARTERIAL
I-94 (BISHOP FORD EXPWY)	INTERSTATE

**PROJECT IS LOCATED IN:  
VILLAGE OF SOUTH HOLLAND**



FULL SIZE PLANS HAVE BEEN PREPARED USING STANDARD ENGINEERING SCALES. REDUCED SIZED PLANS WILL NOT CONFORM TO STANDARD SCALES. IN MAKING MEASUREMENTS ON REDUCED PLANS, THE ABOVE SCALES MAY BE USED.

J.U.L.I.E.  
JOINT UTILITY LOCATION INFORMATION FOR EXCAVATORS  
1-800-892-0123  
OR 811

MEADE ELECTRIC CO. DISTRICT ONE ELECTRICAL  
MAINTENANCE CONTRACTOR LOCATES IDOT ELECTRICAL  
EQUIPMENT AND UNDERGROUND CABLES  
773-287-7672

PROJECT MANAGER: DARYLE DREW (847) 705-4424  
PROJECT ENGINEER: TONY GODINHO (847) 705-4442

CONTRACT NO. 62M93

STATE OF ILLINOIS  
DEPARTMENT OF TRANSPORTATION

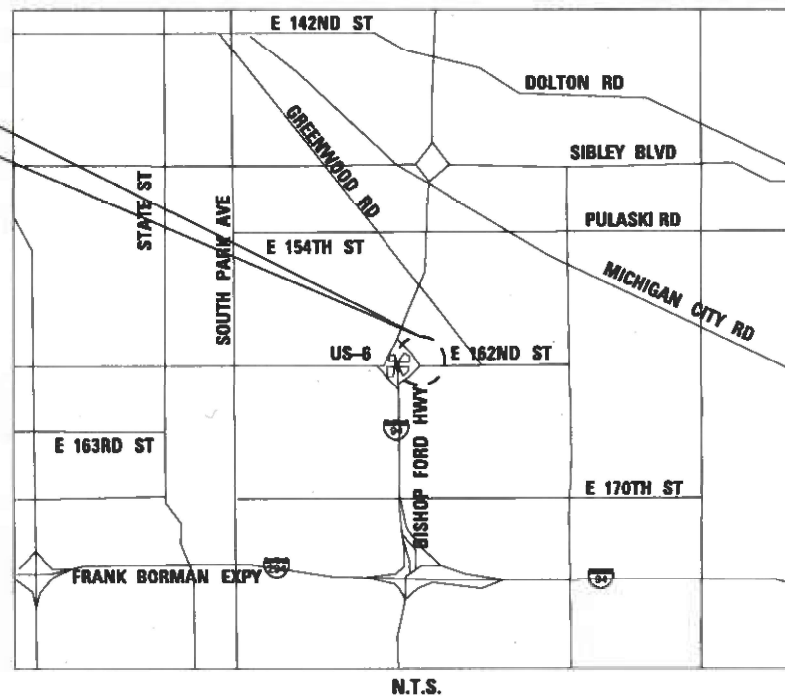
**PROPOSED  
HIGHWAY PLANS**

**US 6 (162nd ST)  
E OF I-94 (BISHOP FORD EXPWY)  
SECTION 2020-217-L  
PROJECT NHPP-1Y5X(298)**

**HIGH MAST LIGHTING REPLACEMENT**

**COOK COUNTY**

C-91-011-21



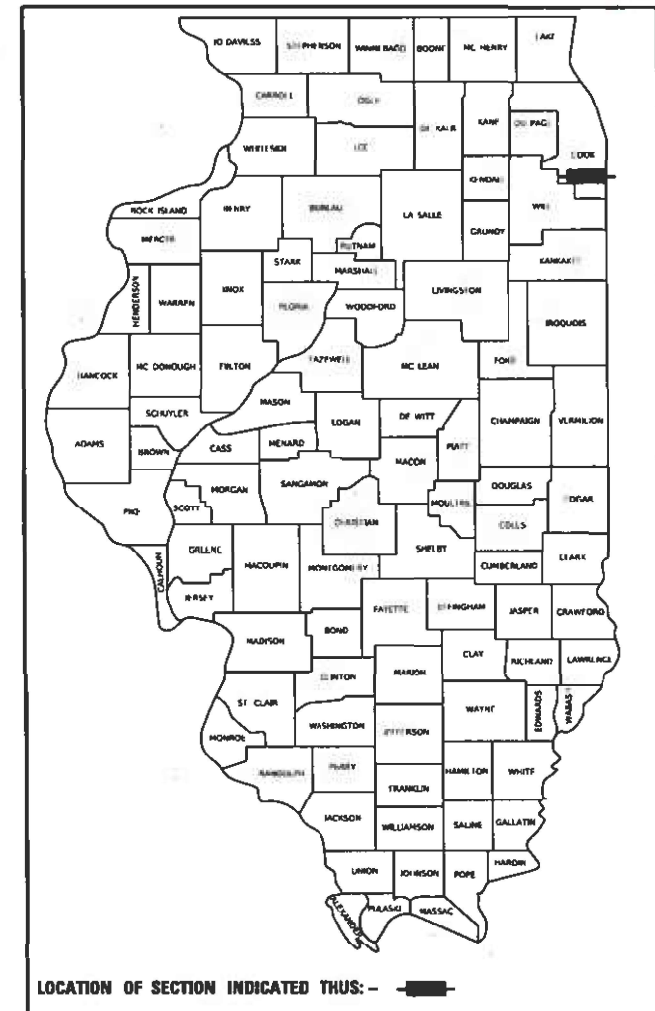
*R-101*  
8/13/2021  
RACIEL OCAMPO, P.E. DATE  
LICENSE NO.: 062-070793  
EXPIRES: 11-30-2021  
SHEETS: 5



*R.D. Patel*  
8/13/2021  
RASHESHKUMAR D. PATEL, P.E. DATE  
LICENSE NO.: 062-064617  
EXPIRES: 11-30-2021  
SHEETS: 6-9

F.A.P. RTE.	SECTION	COUNTY	TOTAL SHEETS	SHEET NO.
351	2020-217-L	COOK	23	1

D-91-012-21



LOCATION OF SECTION INDICATED THUS: - [Symbol] -

**SINGH**  
SINGH + ASSOCIATES INC.  
CONSULTING ENGINEERS  
230 WEST MONROE STREET  
SUITE 1400  
CHICAGO, IL 60606  
(312) 629-0240  
ILLINOIS PROFESSIONAL DESIGN FIRM  
REGISTRATION NO. 184001139-002

STATE OF ILLINOIS  
DEPARTMENT OF TRANSPORTATION  
SUBMITTED *Aug 13 2021*  
*Tony Godinho*  
REGIONAL ENGINEER  
October 1 2021  
*Stephen M. L...*  
ENGINEER OF DESIGN AND ENVIRONMENT  
October 1 2021  
*Stephen M. L...*  
DIRECTOR OF HIGHWAYS PROJECT IMPLEMENTATION

**PRINTED BY THE AUTHORITY  
OF THE STATE OF ILLINOIS**

**INDEX OF SHEETS**

SHEET NUMBERS	DRAWING NUMBERS	DESCRIPTION
1		COVER
2	GEN-01	INDEX OF SHEETS, HIGHWAY STANDARDS, DISTRICT ONE DETAILS AND GENERAL NOTES
3	SOQ-01	SUMMARY OF QUANTITIES
4	SOQ-02	SUMMARY OF QUANTITIES
5	C-01	CIVIL SITE PLAN
6	LT-01	LIGHTING LEGEND AND GENERAL NOTES
7	LT-02	LIGHTING SCHEDULE OF QUANTITIES
8	LT-03	REMOVAL LIGHTING PLAN I-94 AT US-6 (E 162ND ST)
9	LT-04	PROPOSED LIGHTING PLAN I-94 AT US-6 (E 162ND ST)
10	LT-05	LIGHTING CONTROLLER "F" WIRING DIAGRAM
11 - 14	LT-06 TO LT-09	EXISTING AS-BUILT LIGHTING PLANS
15 - 18	SD-01 TO SD-04	IDOT D1-BUREAU OF ELECTRICAL DETAIL STANDARDS
19 - 23	SD-05 TO SD-09	IDOT D1-TRAFFIC CONTROL STANDARDS

**IDOT DISTRICT ONE STANDARD DETAILS**

STANDARD NO.	TITLE
BE-305	LIGHT POLE FOUNDATION, METAL
BE-400	ALUMINUM LIGHT POLE 47'-6" (14.478 m) MOUNTING HEIGHT
BE-701	LUMINAIRE SAFETY CABLE ASSEMBLY
BE-702	MISC. ELECTRICAL DETAILS SHEET A
TC-08	ENTRANCE AND EXIT RAMP CLOSURE DETAILS
TC-10	TRAFFIC CONTROL AND PROTECTION FOR SIDE ROAD, INTERSECTIONS AND DRIVEWAYS
TC-14	TRAFFIC CONTROL AND PROTECTION AT TURN BAYS (TO REMAIN OPEN TO TRAFFIC)
TC-17	TRAFFIC CONTROL DETAILS FOR FREEWAY SHOULDER CLOSURES AND PARTIAL RAMP CLOSURES
TC-22	ARTERIAL INFORMATION SIGN

**HIGHWAY STANDARDS**

STANDARD NO.	TITLE
000001-08	STANDARD SYMBOLS, ABBREVIATIONS, AND PATTERNS
001006-00	DECIMAL OF AN INCH AND OF A FOOT
701106-02	OFF-RD OPERATIONS, MULTILANE, MORE THAN 15' AWAY
701400-10	APPROACH TO LANE CLOSURE, FREEWAY/EXPRESSWAY
701401-12	LANE CLOSURE, FREEWAY/EXPRESSWAY
701428-01	TRAFFIC CONTROL SETUP AND REMOVAL FREEWAY/EXPRESSWAY
701601-09	URBAN LANE CLOSURE, MULTILANE, 1W OR 2W WITH NONTRAVERSABLE MEDIAN
701901-08	TRAFFIC CONTROL DEVICES

**GENERAL NOTES**

- SEVENTY-TWO (72) HOURS BEFORE STARTING EXCAVATION, THE CONTRACTOR SHALL CALL JULIE AT 1-800-892-0123 TO HAVE THE LOCATION OF EXISTING UNDERGROUND UTILITIES MARKED IN THE FIELD.
- THE CONTRACTOR SHALL CONTACT THE EXPRESSWAY TRAFFIC CONTROL SUPERVISOR AT (847) 705-4155 AND THE DISTRICT ONE TRAFFIC CONTROL SUPERVISOR AT KALPANA.KANNAN-HOSADURGA@ILLINOIS.GOV A MINIMUM OF 72 HOURS IN ADVANCE OF BEGINNING WORK.
- THE CONTRACTOR IS RESPONSIBLE FOR OBTAINING ALL NECESSARY PERMITS TO PERFORM WORK.
- THE CONTRACTOR SHALL BE RESPONSIBLE FOR THE PROTECTION OF ALL UNDERGROUND OR SURFACE UTILITIES EVEN THOUGH THEY MAY NOT BE SHOWN IN THE PLANS. ANY UTILITY THAT IS DAMAGED DURING CONSTRUCTION SHALL BE REPAIRED OR REPLACED TO THE SATISFACTION OF THE ENGINEER. THIS WORK WILL BE AT THE CONTRACTOR'S EXPENSE.
- THE CONTRACTOR SHALL COORDINATE WORK WITH UTILITIES IN ADVANCE OF WORKING IN THE VICINITY OF THEIR FACILITIES, AND ALLOW SUFFICIENT TIME FOR THEM TO PREFORM ADJUSTMENTS TO THEIR FACILITIES IN ACCORDANCE WITH THE CONTRACTOR'S SCHEDULE. COORDINATION EFFORTS SHALL BE INCLUDED IN THE COST OF THE CONTRACT BID PRICE.
- THE CONTRACTOR MUST CALL THE IDOT ELECTRICAL MAINTENANCE CONTRACTOR TO LOCATE IDOT FACILITY CABLES.
- IT SHALL BE THE CONTRACTOR'S RESPONSIBILITY TO VERIFY ALL DIMENSIONS AND CONDITIONS EXISTING IN THE FIELD PRIOR TO ORDERING MATERIALS AND BEGINNING CONSTRUCTION.
- THE CONTRACTOR WILL NOT BE ALLOWED TO SET UP A YARD OR FIELD OFFICE ON STATE PROPERTY WITHOUT WRITTEN PERMISSION FROM THE DEPARTMENT.
- WHEN ARTIFICIAL LIGHTING IS USED IN NIGHT OPERATIONS THE CONTRACTOR SHALL EXERCISE THE UTMOST PRECAUTIONS IN PREVENTING ADVERSE VISIBILITY TO THE MOTORING PUBLIC, RESIDENTIAL AND ADJOINING COMMERCIAL AREAS.
- BARRICADES: TYPE I, TYPE II, AND TYPE III BARRICADES SHALL BE WEIGHTED IN A MANNER APPROVED BY THE MANUFACTURER SO THEY ARE NOT MOVED BY TRAFFIC.
- THE DEPARTMENT HAS NOT OBTAINED ANY PERMITS FOR OFF SITE BORROW, WASTE, USE (BWU) AREAS. PRIOR TO WORKING IN BWU AREAS, IF THE CONTRACTOR CHOOSES TO USE ACTIVITIES REQUIRING PERMITS IT IS THE CONTRACTOR'S RESPONSIBILITY TO SECURE THE PROPER PERMITS, IN ADDITION TO THE BORROW REVIEW (BDE 2289) AND USE/WASTE REVIEW (BDE 2290) SUBMITTALS, THE CONTRACTOR SHALL SUBMIT AN EROSION AND SEDIMENT CONTROL (ESC) PLAN FOR EVERY BWU SITE TO THE DEPARTMENT FOR ACCEPTANCE. GUIDELINES FOR ACCEPTABLE BWU PRACTICES CAN BE FOUND IN SECTION 11.0.1 AND 1 OF THE SWPPP. THE COST OF ALL MATERIALS AND LABOR NECESSARY TO COMPLY WITH THE ABOVE PROVISIONS TO PREPARE AND IMPLEMENT ESC PLANS WILL NOT BE PAID FOR SEPARATELY, BUT SHALL BE CONSIDERED AS INCLUDED IN THE UNIT BID PRICES OF THE CONTRACT AND NO ADDITIONAL COMPENSATION WILL BE ALLOWED.
- THE CONTRACTOR SHALL REQUEST AND GAIN APPROVAL FROM THE ILLINOIS DEPARTMENT OF TRANSPORTATION'S EXPRESSWAY TRAFFIC OPERATIONS ENGINEER AT WWW.IDOTLCS.COM TWENTY-FOUR (24) HOURS IN ADVANCE OF ALL DAILY LANE, RAMP AND SHOULDER CLOSURES AND 7 DAYS IN ADVANCE OF ALL PERMANENT AND WEEKEND CLOSURES ON ALL FREEWAYS AND/OR EXPRESSWAYS IN DISTRICT ONE, THE ADVANCE NOTIFICATION 15 CALCULATED BASED ON MONDAY THROUGH FRIDAY AND SHALL NOT INCLUDE WEEKENDS OR HOLIDAYS."

MODEL: D:\a\j\l\1011\Projects\1106601\Task Order\13162M9304\_CADD\CADD\_Sheets\ID162M93-01.dgn  
 FILE NAME: 1011\Projects\1106601\Task Order\13162M9304\_CADD\CADD\_Sheets\ID162M93-01.dgn

**GEN-01**



USER NAME = mgarvida	DESIGNED - HP	REVISED - 09/23/2021
	DRAWN - HP	REVISED -
PLOT SCALE = 2' / in.	CHECKED - RP/MG	REVISED -
PLOT DATE = 9/22/2021	DATE - 08/12/2021	REVISED -

**STATE OF ILLINOIS  
DEPARTMENT OF TRANSPORTATION**

**INDEX OF SHEETS, HIGHWAY STANDARDS, DISTRICT ONE  
STANDARD DETAILS AND GENERAL NOTES**

SCALE: SHEET OF SHEETS STA. TO STA.

F.A.P. RTE.	SECTION	COUNTY	TOTAL SHEETS	SHEET NO.
351	2020-217-L	COOK	23	2
CONTRACT NO. 62M93				
ILLINOIS FED. AID PROJECT				

REV-SEP

CODE NO.	ITEM	UNIT	TOTAL QUANTITY URBAN	CONSTRUCTION CODE	
				NHPP 80% FED 20% STATE 0021	NHPP 80% FED 20% STATE 0021
				ROADWAY	LIGHTING
20400800	FURNISHED EXCAVATION	CU YD	2	2	-
25000210	SEEDING, CLASS 2A	ACRE	0.3	0.3	-
25000400	NITROGEN FERTILIZER NUTRIENT	POUND	9	9	-
25000600	POTASSIUM FERTILIZER NUTRIENT	POUND	9	9	-
25100630	EROSION CONTROL BLANKET	SQ YD	80	80	-
66900200	NON-SPECIAL WASTE DISPOSAL	CU YD	285	285	-
66900530	SOIL DISPOSAL ANALYSIS	EACH	4	4	-
66901001	REGULATED SUBSTANCES PRE-CONSTRUCTION PLAN	L SUM	1	1	-
66901003	REGULATED SUBSTANCES FINAL CONSTRUCTION REPORT	L SUM	1	1	-
66901006	REGULATED SUBSTANCES MONITORING	CAL DAY	60	60	-
67000400	ENGINEER'S FIELD OFFICE, TYPE A	CAL MO	12	12	-
67100100	MOBILIZATION	L SUM	1	1	-
70200100	NIGHTTIME WORK ZONE LIGHTING	L SUM	1	1	-
81028240	UNDERGROUND CONDUIT, GALVANIZED STEEL, 4" DIA.	FOOT	135	-	135
81603081	UNIT DUCT, 600V, 3-1C NO.2, 1/C NO.4 GROUND, (XLP-TYPE USE), 1 1/2" DIA. POLYETHYLENE	FOOT	2,056	-	2,056
82110008	LUMINAIRE, LED, ROADWAY, OUTPUT DESIGNATION H	EACH	11	-	11
83050810	LIGHT POLE, ALUMINUM, 47.5 FT. M.H., 15 FT. MAST ARM	EACH	11	-	11

MODEL: Default  
 FILE NAME: \\0101\Projects\1166601\Task Order\13162M9304\_CADD\CADD\_Sheets\162M93-rt-cs01.dgn



USER NAME = vntunex	DESIGNED - HP	REVISED -
	DRAWN - HP	REVISED -
PLOT SCALE = 2' / in.	CHECKED - RP/MG	REVISED -
PLOT DATE = 8/13/2021	DATE - 08/13/2021	REVISED -

**STATE OF ILLINOIS  
DEPARTMENT OF TRANSPORTATION**

**SUMMARY OF QUANTITIES**

SCALE: SHEET OF SHEETS STA. TO STA.

F.A.P. RTE.	SECTION	COUNTY	TOTAL SHEETS	SHEET NO.
351	2020-217-L	COOK	23	3
CONTRACT NO. 62M93			ILLINOIS FED. AID PROJECT	

**S00-01**

REV-SEP

CODE NO.	ITEM	UNIT	TOTAL QUANTITY URBAN	CONSTRUCTION CODE	
				NHPP 80% FED 20% STATE 0021	NHPP 80% FED 20% STATE 0021
				ROADWAY	LIGHTING
				COOK	COOK
83600365	LIGHT POLE FOUNDATION, METAL, 15" BOLT CIRCLE, 10" X 8'	EACH	11	-	11
83800205	BREAKAWAY DEVICE, TRANSFORMER BASE, 15 INCH BOLT CIRCLE	EACH	11	-	11
X1400190	REMOVAL OF HIGH MAST LUMINAIRES, SALVAGE	EACH	7	-	7
X7011015	TRAFFIC CONTROL AND PROTECTION (EXPRESSWAYS)	L SUM	1	1	-
X7010216	TRAFFIC CONTROL AND PROTECTION, (SPECIAL)	L SUM	1	1	-
X8420502	REMOVAL OF LIGHT TOWER, NO SALVAGE	EACH	2	-	2
X8420510	REMOVAL OF TOWER FOUNDATION	EACH	2	-	2
Z0013798	CONSTRUCTION LAYOUT	L SUM	1	1	-
Z0030850	TEMPORARY INFORMATION SIGNING	SQ FT	52	52	-
Z0033020	LUMINAIRE SAFETY CABLE ASSEMBLY	EACH	11	-	11
Z0033028	MAINTENANCE OF LIGHTING SYSTEM	CAL MO	7	-	7

MODEL: D:\a\j\...  
 FILE NAME: ...  
 ORDER: 13062M9304\_CADD\CADD\_Sheets\162M93-ht-ss02-02.dgn



USER NAME = vntunez	DESIGNED - HP	REVISED -
	DRAWN - HP	REVISED -
PLOT SCALE = 2' / in.	CHECKED - RP/MG	REVISED -
PLOT DATE = 8/13/2021	DATE - 08/13/2021	REVISED -

**STATE OF ILLINOIS  
DEPARTMENT OF TRANSPORTATION**

**SUMMARY OF QUANTITIES**

SCALE: SHEET OF SHEETS STA. TO STA.

F.A.P. RTE.	SECTION	COUNTY	TOTAL SHEETS	SHEET NO.
351	2020-217-L	COOK	23	4
CONTRACT NO. 62M93			ILLINOIS FED. AID PROJECT	

**S00-02**

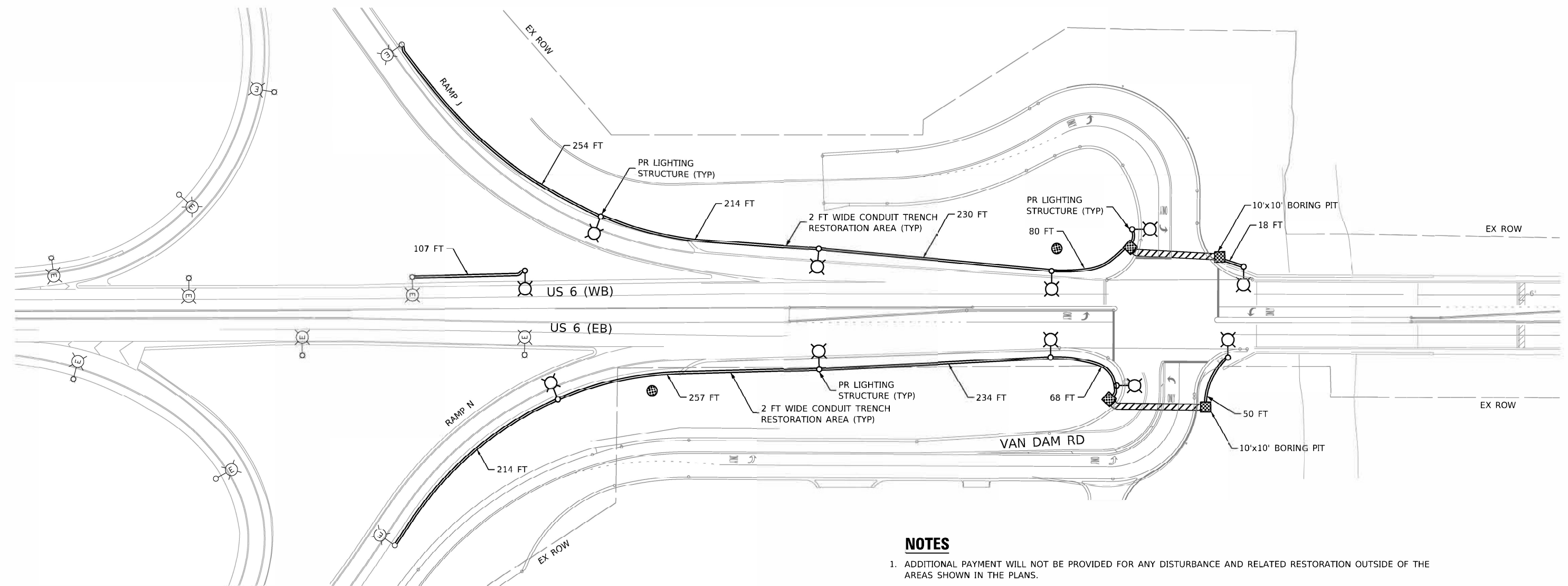
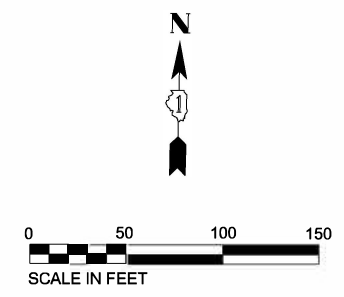
REV-SEP



**LEGEND**

- 10' DIAM. RESTORATION AREA
- 2' WIDE RESTORATION AREA (UNLESS OTHERWISE NOTED)
- CONDUIT DIRECT BORE
- 10'x10' BORING PIT
- PR LIGHTING UNIT

PAY ITEM	DESCRIPTION	QTY	UNIT
20400800	FURNISHED EXCAVATION	2	CU YD
25000210	SEEDING, CLASS 2A	0.25	ACRE
25000400	NITROGEN FERTILIZER NUTRIENT	9	LBS
25000600	POTASSIUM FERTILIZER NUTRIENT	9	LBS
25100630	EROSION CONTROL BLANKET	80	SQ YD



**NOTES**

1. ADDITIONAL PAYMENT WILL NOT BE PROVIDED FOR ANY DISTURBANCE AND RELATED RESTORATION OUTSIDE OF THE AREAS SHOWN IN THE PLANS.
2. RESTORATION AREAS INCLUDE THE DISTURBANCE TO THE EARTH BASED ON WORK REQUIRED TO INSTALL THE PROPOSED UNIT DUCT (2 FT WIDE AND 3 FT DEPTH TRENCH; UNLESS OTHERWISE NOTED), BORE PITS EXCAVATION (3 FT DEPTH), EXISTING TOWER RESTORATION, OR EXCAVATION FOR THE PROPOSED LIGHTING CONTROLLER (DEPTH PER IDOT D1 STANDARD). RESTORATION AREAS INCLUDE SEEDING, NUTRIENTS, AND EROSION CONTROL BLANKET AS REQUIRED.
3. FURNISHED EXCAVATION TO BE USED TO FILL THE HOLES CREATED BY THE REMOVAL OF THE EXISTING TOWERS.

MODEL: Default  
 FILE NAME: \\s101379\ecss\148601\Task Order\13162493\04\_CADD\CADD\_Sheets\162493-01-CV-01.dgn



USER NAME = vjruiz	DESIGNED = AD	REVISED =
	DRAWN = AD	REVISED =
PLOT SCALE = 100.0000" / in.	CHECKED = RO	REVISED =
PLOT DATE = 8/13/2021	DATE = 8/2/2021	REVISED =

**STATE OF ILLINOIS  
DEPARTMENT OF TRANSPORTATION**

**PROPOSED CIVIL PLAN  
I-94 AT US 6**

SCALE: 1"=50' SHEET OF SHEETS STA. TO STA.

F.A.P. RTE.	SECTION	COUNTY	TOTAL SHEETS	SHEET NO.
351	2020-217-L	COOK	23	5
CONTRACT NO. 62M93			ILLINOIS FED. AID PROJECT	

**C-01**

PLOT TIME = 14:21.4 PM  
 PLOT DATE = 8/13/2021  
 FILE NAME = \\vd101\Projects\14868\Task-Order-13\62M93\04\_CADD\CADD-Sheets\01E2M93-shr-light-01.dgn  
 FILE NAME = \\vd101\Projects\14868\Task-Order-13\62M93\04\_CADD\CADD-Sheets\01E2M93-shr-light-01.dgn  
 PLOT SCALE = 100' / 1"

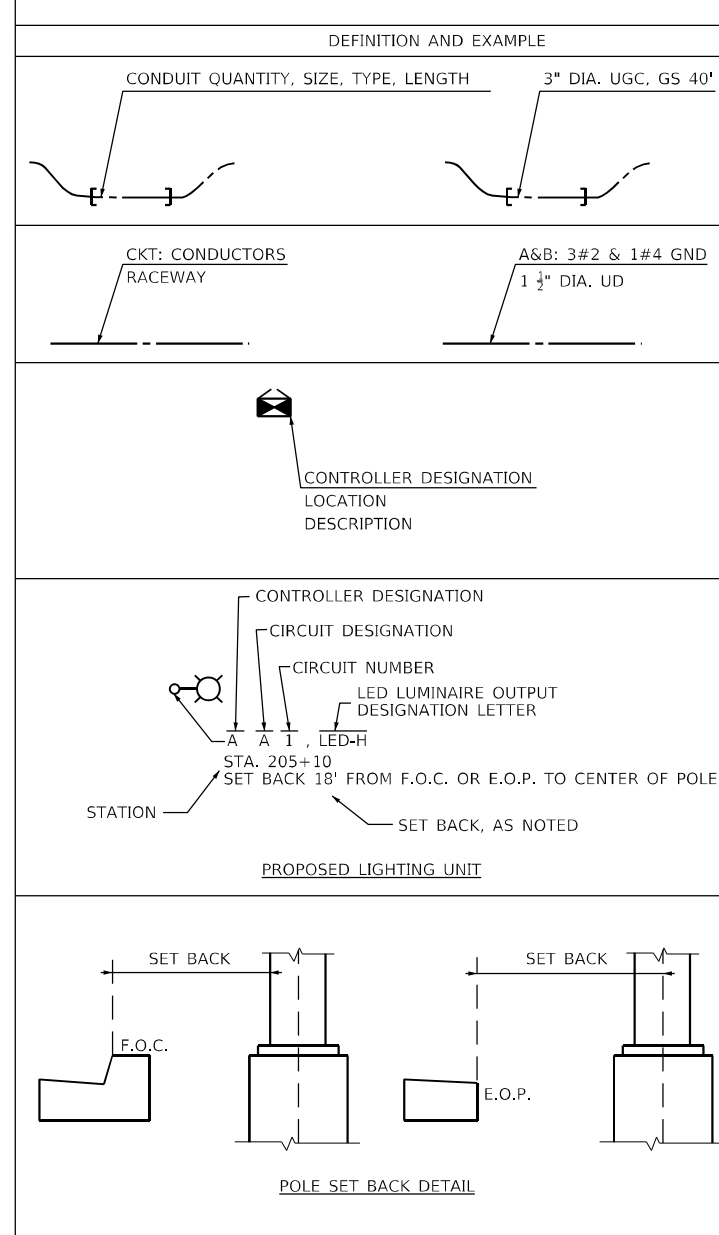
### LIGHTING AND ELECTRICAL LEGEND

SYMBOL	DESCRIPTION
	EXISTING HIGH MAST LIGHTING FOUNDATION AND TOWER TO BE REMOVED, NO SALVAGE. LUMINAIRES REMOVED TO BE SALVAGED.
	EXISTING LIGHTING FOUNDATION, POLE, MAST ARM, & LUMINAIRE TO REMAIN
	PROPOSED IDOT LIGHTING UNIT MOUNTED ON BREAKAWAY DEVICE METAL FOUNDATION, 47.5 FT M.H. U.N.O., 15 FT MAST ARM, LUMINAIRE TO BE LED, HORIZONTAL MOUNT, OUTPUT DESIGNATION H (240 VAC) U.N.O.
	EXISTING IDOT LIGHTING CONTROLLER TO REMAIN
	EXISTING UNDERGROUND UNIT DUCT TO BE ABANDONED IN PLACE
	EXISTING UNIT DUCT IN EXISTING UNDERGROUND CONDUIT
	EXISTING UNIT DUCT TO REMAIN
	PROPOSED UNIT DUCT, SIZE AND TYPE AS NOTED
	PROPOSED UNIT DUCT IN UNDERGROUND CONDUIT, SIZE AND TYPE AS NOTED

### ABBREVIATIONS

ABBREVIATION	DESCRIPTION
AC	ALTERNATING CURRENT
A/C	AERIAL CABLE
ATS	ATTACHED TO STRUCTURE
B.O.C.	BACK OF CURB
CB	CIRCUIT BREAKER
CKT	CIRCUIT
CM	CENTIMETER
COMED	COMMONWEALTH EDISON COMPANY
CP	CONTROL PANEL
CT	CURRENT TRANSFORMER
DA	DAVIT ARM
DC	DIRECT CURRENT
DIA	DIAMETER
DP	DISTRIBUTION PANEL
E	EXISTING UNIT TO REMAIN
EX.	EXISTING
ECA	ELECTRIC CABLE ASSEMBLY
EIS	EMBEDDED IN STRUCTURE
E.O.P.	EDGE OF PAVEMENT
F.O.C.	FACE OF CURB
FT	FEET OR FOOT
FU	FUSE
GND	GROUND
HID	HIGH INTENSITY DISCHARGE
JB	JUNCTION BOX
KVA	KILOVOLT-AMPERE
KW	KILOWATTS
LED	LIGHT EMITTING DIODE
LP	LIGHT POLE
M	METER
MA	MAST ARM
MC	MULTI-CONDUCTOR
MM	MILLIMETER
M.H.	MOUNTING HEIGHT
MW	MESSANGER WIRE
NESC	NATIONAL ELECTRIC SAFETY CODE
NO. #	NUMBER
N.T.S.	NOT TO SCALE
P	PROPOSED
PB	PUSH BUTTON
PNL	PANEL
PVC	POLYVINYL CHLORIDE
PVCC	PVC COATED RIGID GALVANIZED CONDUIT
RGC	RIGID GALVANIZED CONDUIT
PT	POTENTIAL TRANSFORMER
R	EXISTING UNIT TO BE REMOVED (OWNER SALVAGED U.N.O.)
RR	EXISTING UNIT TO BE REMOVED AND REINSTALLED
RECP	RECEPTACLE
RGC	RIGID GALVANIZED CONDUIT
SEL SW	SELECTOR SWITCH
SPARE	SPARE
SPACE	SPACE
SS	STAINLESS STEEL
STA	STATION
T/F	TOP OF FOUNDATION
UD	UNIT DUCT
U.N.O.	UNLESS NOTED OTHERWISE
UGC, GS	UNDERGROUND CONDUIT, GALVANIZED STEEL
VAC	VOLTS, ALTERNATING CURRENT
W	WATTS
WP	WOOD POLE
XFMR	TRANSFORMER
HPS	HIGH PRESSURE SODIUM
LPS	LOW PRESSURE SODIUM
LTFM	LIQUID TIGHT FLEXIBLE METALLIC

### CALL-OUT SAMPLE



### GENERAL NOTES

1. THE ELECTRICAL WORK SHALL BE PERFORMED IN ACCORDANCE WITH THE LATEST CODES, STANDARDS AND THE IDOT STANDARD SPECIFICATIONS FOR ROAD AND BRIDGE CONSTRUCTION ADOPTED APRIL 1, 2016, AND SUPPLEMENTAL SPECIFICATIONS AND RECURRING SPECIAL PROVISIONS.
2. THE CONTRACTOR SHALL CONTACT MEADE ELECTRIC CO. DISTRICT ONE ELECTRICAL MAINTENANCE CONTRACTOR TO LOCATE IDOT ELECTRICAL EQUIPMENT AND UNDERGROUND CABLES 773-287-7672.

### IDOT-D1 STANDARDS:

STANDARD NO.	TITLE
BE-305	LIGHT POLE FOUNDATION, METAL
BE-400	ALUMINUM LIGHT POLE 47'-6" (14.478 m) MOUNTING HEIGHT
BE-701	LUMINAIRE SAFETY CABLE ASSEMBLY
BE-702	MISC. ELECTRICAL DETAILS SHEET A



USER NAME = vnupez	DESIGNED - HP	REVISED -
PLOT SCALE = 100' / 1"	CHECKED - RP/MG	REVISED -
PLOT DATE = 8/13/2021	DATE - 08/13/2021	REVISED -

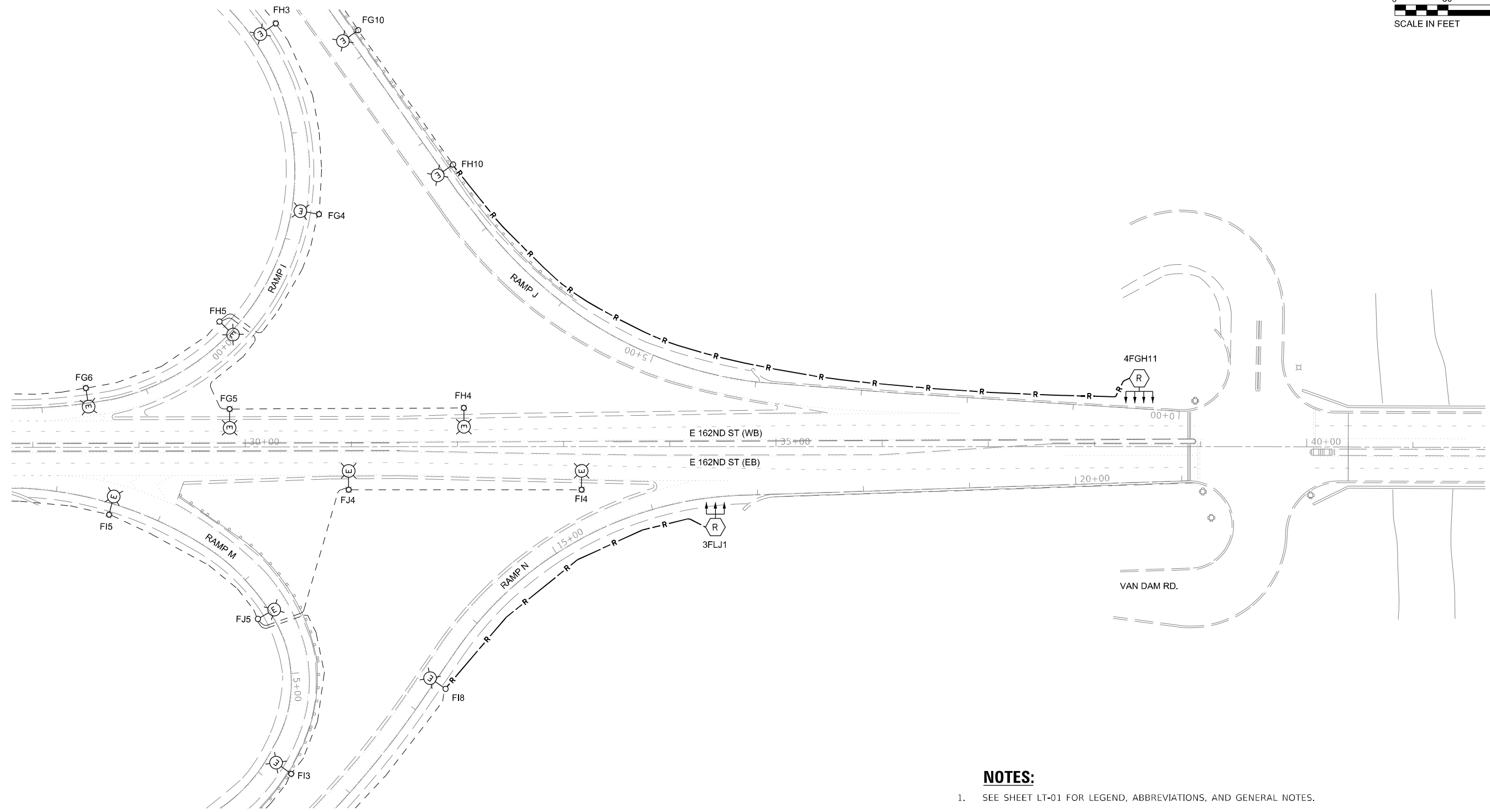
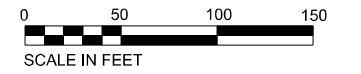
STATE OF ILLINOIS  
DEPARTMENT OF TRANSPORTATION

LIGHTING LEGEND AND GENERAL NOTES

SCALE: SHEET OF SHEETS STA. TO STA.

F.A.P. RTE.	SECTION	COUNTY	TOTAL SHEETS	SHEET NO.
351	2020-217-L	COOK	23	6
CONTRACT NO. 62M93				
ILLINOIS FED. AID PROJECT				

LT-01



**NOTES:**

1. SEE SHEET LT-01 FOR LEGEND, ABBREVIATIONS, AND GENERAL NOTES.
2. EXISTING LIGHTING SYSTEM TO REMAIN OPERATIONAL UNTIL PROPOSED LIGHTING SYSTEM IS INSTALLED AND OPERATIONAL.

**LT-02**

MODEL: P:\cadd\148601\Task\_Order\13162\M9304\_CADD\CADD\_Sheets\LD162\M93-act-light-02.dwg  
FILE NAME: \\g:\01\p\cadd\148601\Task\_Order\13162\M9304\_CADD\CADD\_Sheets\LD162\M93-act-light-02.dwg



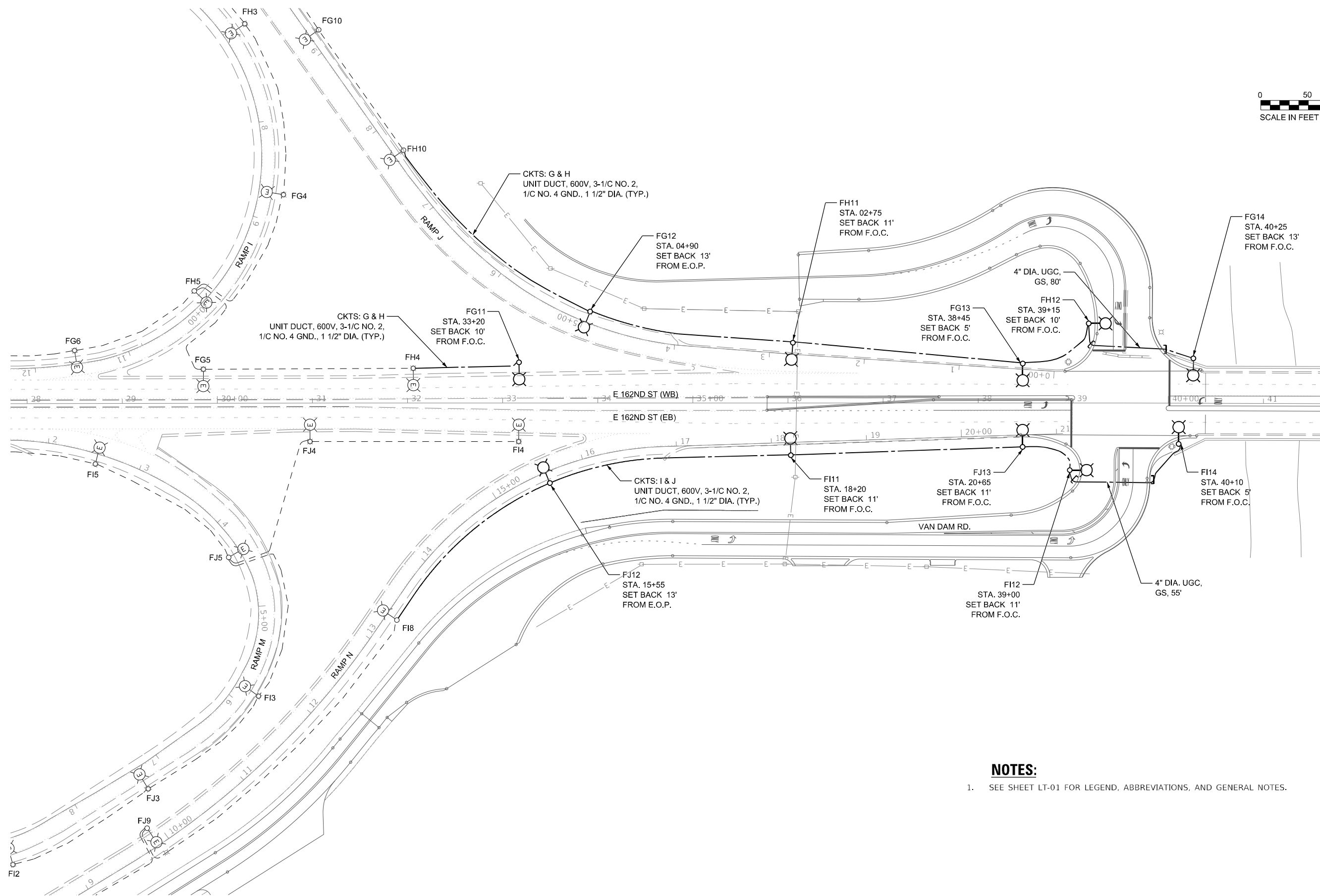
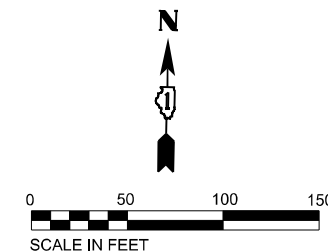
USER NAME = vturnez	DESIGNED - HP	REVISED -
	DRAWN - HP	REVISED -
PLOT SCALE = 100' / in.	CHECKED - RP/MG	REVISED -
PLOT DATE = 8/13/2021	DATE - 08/13/2021	REVISED -

**STATE OF ILLINOIS  
DEPARTMENT OF TRANSPORTATION**

**REMOVAL LIGHTING PLAN  
I-94 AT US-6 (E 162ND ST)**

SCALE: SHEET OF SHEETS STA. TO STA.

F.A.P. RTE. 351	SECTION 2020-217-L	COUNTY COOK	TOTAL SHEETS 23	SHEET NO. 7
CONTRACT NO. 62M93				
ILLINOIS FED. AID PROJECT				



**NOTES:**

- SEE SHEET LT-01 FOR LEGEND, ABBREVIATIONS, AND GENERAL NOTES.

MODEL: P:\mfg\148601\Task\_Order\_13162\M9304\_CADD\CADD\_Sheets\LD162\M93-ctk-light-03.dwg  
 FILE NAME: UG1011P9304.dwg



USER NAME = mgarvida	DESIGNED - HP	REVISED - 9/23/2021
PLOT SCALE = 100' / in.	DRAWN - HP	REVISED -
PLOT DATE = 9/22/2021	CHECKED - RP/MG	REVISED -
	DATE - 08/13/2021	REVISED -

**STATE OF ILLINOIS  
DEPARTMENT OF TRANSPORTATION**

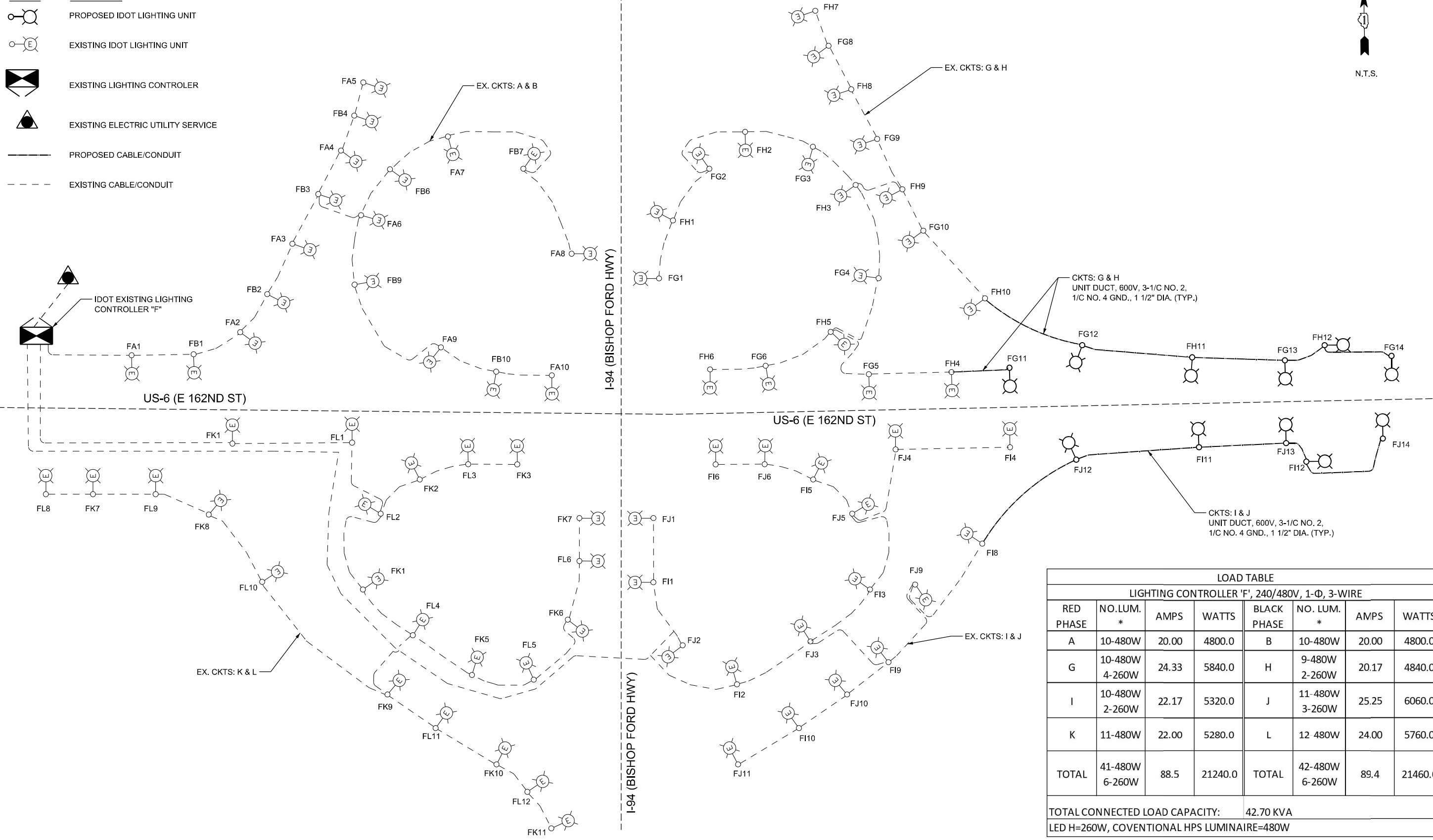
**PROPOSED LIGHTING PLAN  
I-94 AT US-6 (E 162ND ST)**

SCALE: 1"=50' SHEET 2 OF 2 SHEETS STA. TO STA.

F.A.P. RTE.	SECTION	COUNTY	TOTAL SHEETS	SHEET NO.
351	2020-217-L	COOK	23	8
CONTRACT NO. 62M93				
ILLINOIS FED. AID PROJECT				

**LEGEND**

SYMBOL	DESCRIPTION
	PROPOSED IDOT LIGHTING UNIT
	EXISTING IDOT LIGHTING UNIT
	EXISTING LIGHTING CONTROLLER
	EXISTING ELECTRIC UTILITY SERVICE
	PROPOSED CABLE/CONDUIT
	EXISTING CABLE/CONDUIT



LOAD TABLE							
LIGHTING CONTROLLER 'F', 240/480V, 1-Φ, 3-WIRE							
RED PHASE	NO. LUM. *	AMPS	WATTS	BLACK PHASE	NO. LUM. *	AMPS	WATTS
A	10-480W	20.00	4800.0	B	10-480W	20.00	4800.0
G	10-480W 4-260W	24.33	5840.0	H	9-480W 2-260W	20.17	4840.0
I	10-480W 2-260W	22.17	5320.0	J	11-480W 3-260W	25.25	6060.0
K	11-480W	22.00	5280.0	L	12-480W	24.00	5760.0
<b>TOTAL</b>	<b>41-480W 6-260W</b>	<b>88.5</b>	<b>21240.0</b>	<b>TOTAL</b>	<b>42-480W 6-260W</b>	<b>89.4</b>	<b>21460.0</b>
TOTAL CONNECTED LOAD CAPACITY:				42.70 KVA			
LED H=260W, COVENTIONAL HPS LUMINAIRE=480W							

MODEL: P:\default  
 FILE NAME: \\0101\p\6225148601\Task-Order\13162\M9304\_CADD\CADD\_Sheets\LD162\M93-ctrl-light-04.dwg



USER NAME = vnuñez	DESIGNED - HP	REVISED -
PLOT SCALE = 100,0000' / in.	DRAWN - HP	REVISED -
PLOT DATE = 8/13/2021	CHECKED - RP/MG	REVISED -
	DATE - 08/13/2021	REVISED -

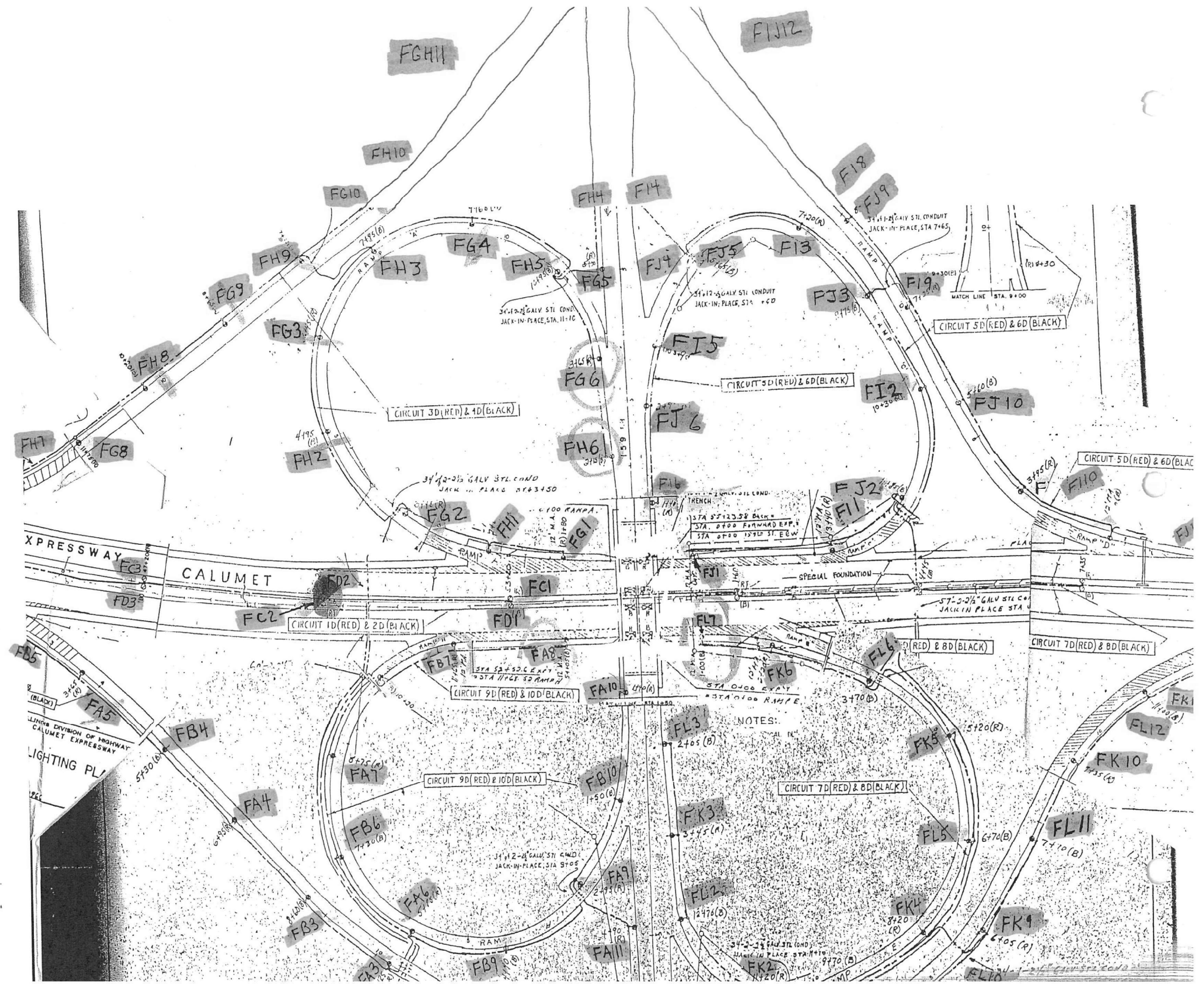
**STATE OF ILLINOIS  
DEPARTMENT OF TRANSPORTATION**

**LIGHTING CONTROLLER "F" WIRING DIAGRAM**

SCALE: NTS SHEET OF SHEETS STA. TO STA.

F.A.P. RTE.	SECTION	COUNTY	TOTAL SHEETS	SHEET NO.
351	2020-217-L	COOK	23	9
CONTRACT NO. 62M93				
ILLINOIS FED. AID PROJECT				

**LT-04**



FOR INFORMATION ONLY

LT-05

MODEL: Default  
 FILE NAME: \\0101\p\c\148601\Task\_Order\_13162\MS304\_CADD\CADD\_Sheets\1621\MS3-CHK\Light-05.dwg



USER NAME = vnuiez	DESIGNED - HP	REVISED -
PLOT SCALE = 2" / 1'	DRAWN - HP	REVISED -
PLOT DATE = 8/13/2021	CHECKED - RP/MG	REVISED -
	DATE - 08/13/2021	REVISED -

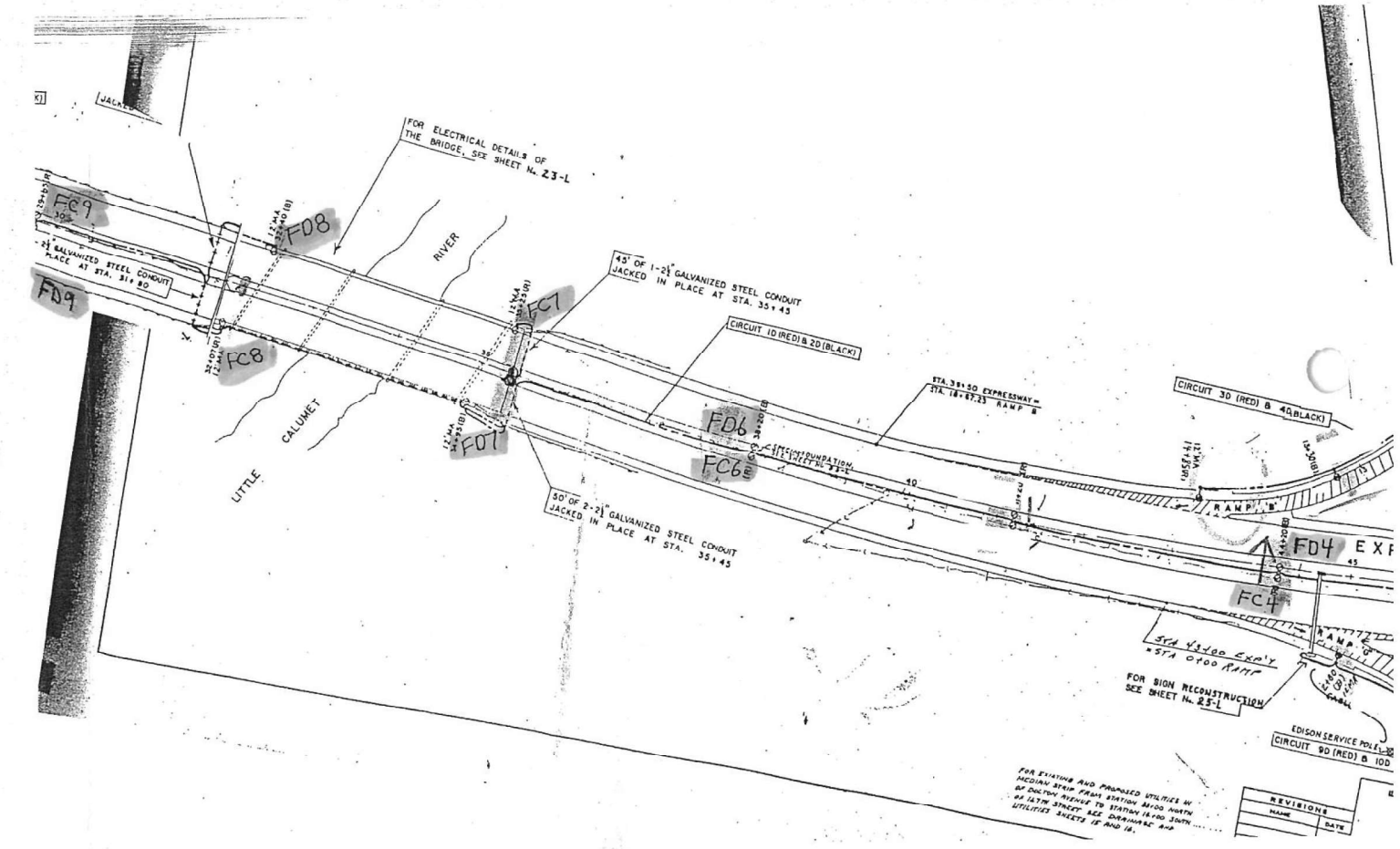
STATE OF ILLINOIS  
DEPARTMENT OF TRANSPORTATION

EXISTING AS-BUILT LIGHTING PLANS

SCALE: SHEET OF SHEETS STA. TO STA.

F.A.P. RTE. 351	SECTION 2020-217-L	COUNTY COOK	TOTAL SHEETS 23	SHEET NO. 10
			CONTRACT NO. 62M93	
ILLINOIS FED. AID PROJECT				

FD10	0-0	FC10
FD11	0-0	FC11
FD12	0-0	FC12
FD13	0-0	FC13
FD14	0-0	FC14
FD15	0-0	FC15



FOR INFORMATION ONLY

LT-06

MODEL: Default  
FILE NAME: \\G:\0310\Projects\148601\Task-Order\13162\M93\04\_CADD\CADD\_Sheets\162\M93-CHK\Light-06.dwg



USER NAME = vturnez	DESIGNED - HP	REVISED -
PLOT SCALE = 2" / 1'	DRAWN - HP	REVISED -
PLOT DATE = 8/13/2021	CHECKED - RP/MG	REVISED -
	DATE - 08/13/2021	REVISED -

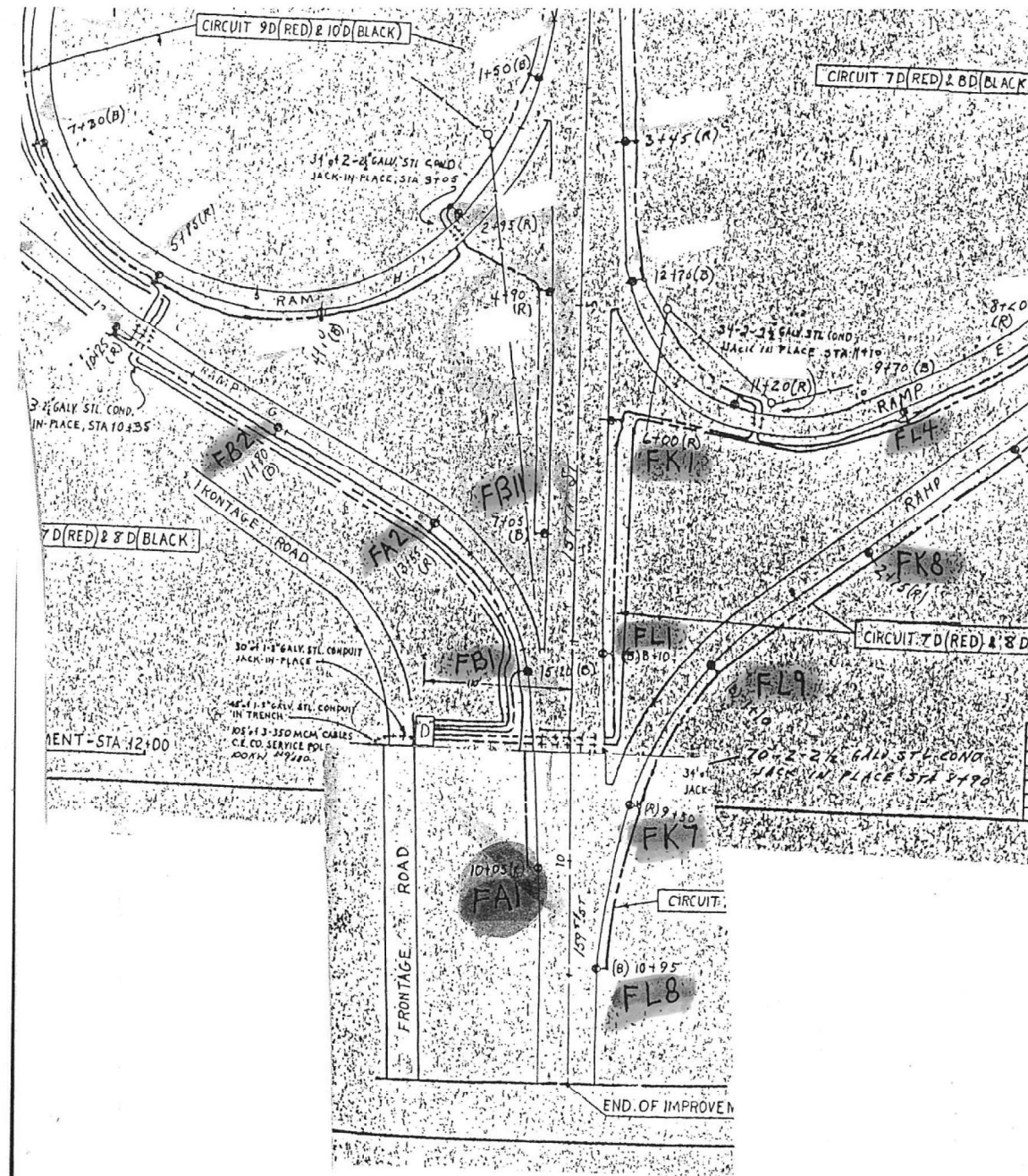
STATE OF ILLINOIS  
DEPARTMENT OF TRANSPORTATION

EXISTING AS-BUILT LIGHTING PLANS			
SCALE:	SHEET	OF	SHEETS
	STA.		TO STA.

F.A.P. RTE.	SECTION	COUNTY	TOTAL SHEETS	SHEET NO.
351	2020-217-L	COOK	23	11
CONTRACT NO. 62M93				
ILLINOIS FED. AID PROJECT				

REVISIONS	NAME	DATE





FOR INFORMATION ONLY

LT-07

MODEL: Default  
 FILE NAME: \\0131\p\c\148601\Task\_Order\13162\M9304\_CADD\CADD\_Sheets\13162\M93-CHK\Light-07.dwg



USER NAME = vnuñez	DESIGNED - HP	REVISED -
PLOT SCALE = 2" / 1"	DRAWN - HP	REVISED -
PLOT DATE = 8/13/2021	CHECKED - RP/MG	REVISED -
	DATE - 08/13/2021	REVISED -

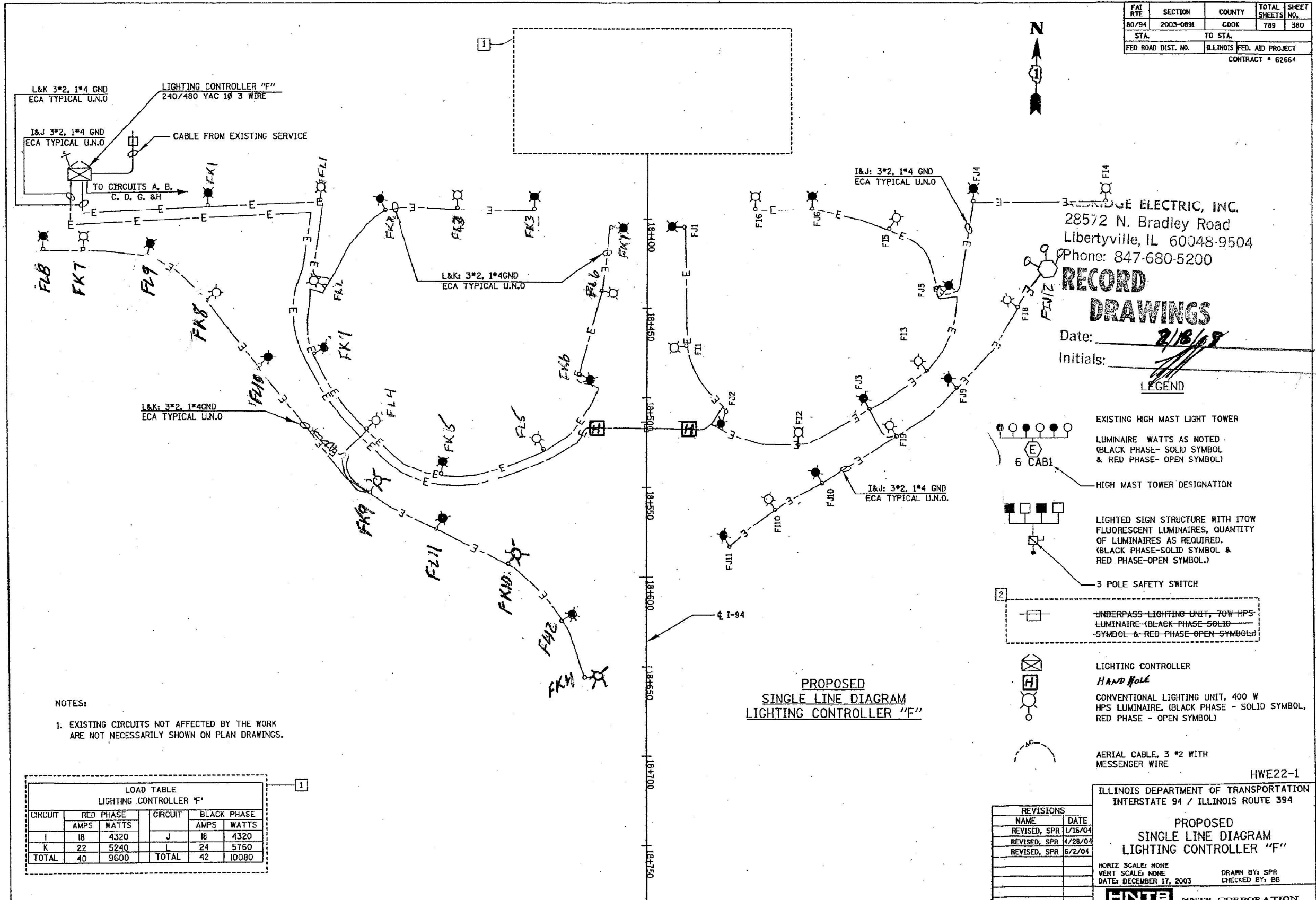
STATE OF ILLINOIS  
DEPARTMENT OF TRANSPORTATION

EXISTING AS-BUILT LIGHTING PLANS

SCALE: SHEET OF SHEETS STA. TO STA.

F.A.P. RTE.	SECTION	COUNTY	TOTAL SHEETS	SHEET NO.
351	2020-217-L	COOK	23	12
CONTRACT NO. 62M93				
ILLINOIS FED. AID PROJECT				

FAT RTE	SECTION	COUNTY	TOTAL SHEETS	SHEET NO.
80/94	2003-0891	COOK	789	380
STA.	TO STA.			
FED ROAD DIST. NO.	ILLINOIS FED. AID PROJECT			
CONTRACT * 62664				



BRIDGE ELECTRIC, INC.  
 28572 N. Bradley Road  
 Libertyville, IL 60048-9504  
 Phone: 847-680-5200

**RECORD DRAWINGS**  
 Date: 2/18/07  
 Initials: [Signature]

- LEGEND**
- EXISTING HIGH MAST LIGHT TOWER
  - LUMINAIRE WATTS AS NOTED (BLACK PHASE- SOLID SYMBOL & RED PHASE- OPEN SYMBOL)
  - 6 CAB1
  - HIGH MAST TOWER DESIGNATION
  - LIGHTED SIGN STRUCTURE WITH 170W FLUORESCENT LUMINAIRES, QUANTITY OF LUMINAIRES AS REQUIRED. (BLACK PHASE-SOLID SYMBOL & RED PHASE-OPEN SYMBOL.)
  - 3 POLE SAFETY SWITCH
  - UNDERPASS LIGHTING UNIT, 70W HPS LUMINAIRE (BLACK PHASE-SOLID SYMBOL & RED PHASE-OPEN SYMBOL)
  - LIGHTING CONTROLLER
  - HAND HOLE
  - CONVENTIONAL LIGHTING UNIT, 400 W HPS LUMINAIRE. (BLACK PHASE - SOLID SYMBOL, RED PHASE - OPEN SYMBOL)
  - AERIAL CABLE, 3 \*2 WITH MESSENGER WIRE

**NOTES:**  
 1. EXISTING CIRCUITS NOT AFFECTED BY THE WORK ARE NOT NECESSARILY SHOWN ON PLAN DRAWINGS.

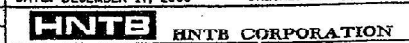
CIRCUIT	RED PHASE		CIRCUIT	BLACK PHASE	
	AMPS	WATTS		AMPS	WATTS
I	18	4320	J	18	4320
K	22	5240	L	24	5760
<b>TOTAL</b>	<b>40</b>	<b>9600</b>	<b>TOTAL</b>	<b>42</b>	<b>10080</b>

NAME	DATE
REVISD, SPR	1/16/04
REVISD, SPR	4/28/04
REVISD, SPR	6/2/04

ILLINOIS DEPARTMENT OF TRANSPORTATION  
 INTERSTATE 94 / ILLINOIS ROUTE 394

**PROPOSED SINGLE LINE DIAGRAM LIGHTING CONTROLLER "F"**

HORIZ SCALE: NONE  
 VERT SCALE: NONE  
 DATE: DECEMBER 17, 2003  
 DRAWN BY: SPR  
 CHECKED BY: BB



FOR INFORMATION ONLY

MODEL: P:\info\... FILE NAME: ... ORDER: 1316249304 CADDD\CADD\_SHEET\162493-20K\INT-08.dwg



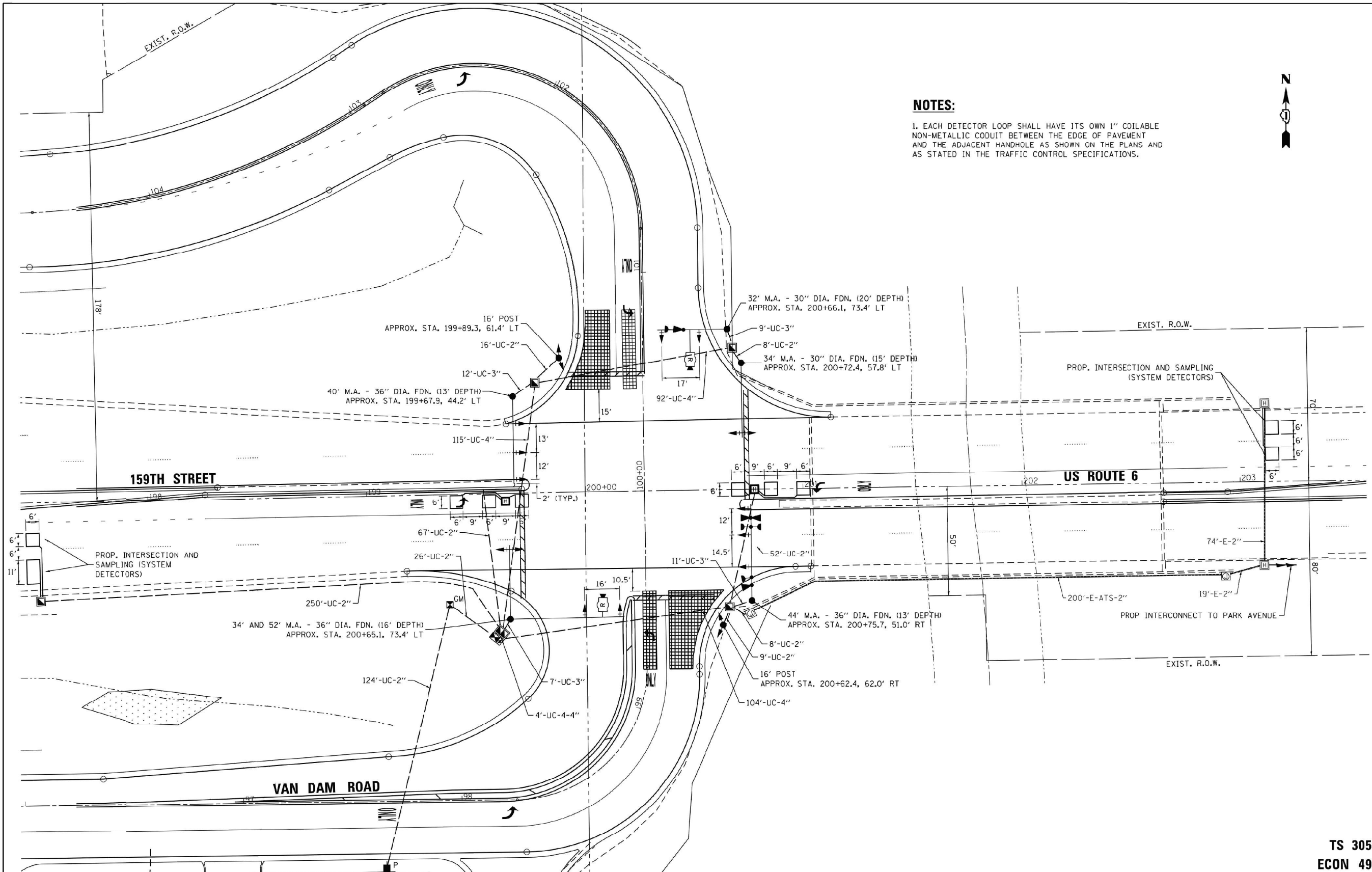
USER NAME = vnuñez	DESIGNED - HP	REVISED -
PLOT SCALE = 2' / in.	DRAWN - HP	REVISED -
PLOT DATE = 8/13/2021	CHECKED - RP/MG	REVISED -
	DATE - 08/13/2021	REVISED -

STATE OF ILLINOIS  
 DEPARTMENT OF TRANSPORTATION

EXISTING AS-BUILT LIGHTING PLANS	
SCALE:	SHEET OF SHEETS STA. TO STA.

F.A.P. RTE.	SECTION	COUNTY	TOTAL SHEETS	SHEET NO.
351	2020-217-L	COOK	23	13
CONTRACT NO. 62M93				
ILLINOIS FED. AID PROJECT				

LT-08



**NOTES:**

1. EACH DETECTOR LOOP SHALL HAVE ITS OWN 1" COILABLE NON-METALLIC COUDET BETWEEN THE EDGE OF PAVEMENT AND THE ADJACENT HANDHOLE AS SHOWN ON THE PLANS AND AS STATED IN THE TRAFFIC CONTROL SPECIFICATIONS.



TS SHT NO. 12

TS 305  
ECON 49

FILE NAME = P:\2012\12-683.02\12-683.02 DGN\12683.02-SGNL-02.dgn	USER NAME = kmuhr	DESIGNED - JPH	REVISED -
		DRAWN - KWM	REVISED -
	PLOT SCALE = 20.0000' / in.	CHECKED - AG	REVISED -
	PLOT DATE = 11/20/2018	DATE 11 02 18	REVISED -

STATE OF ILLINOIS  
DEPARTMENT OF TRANSPORTATION

TRAFFIC SIGNAL MODERNIZATION PLAN  
US ROUTE 6 (159TH STREET) AT VAN DAM ROAD

F.A.P. RTE. 351	SECTION 14-00103-00-CH	COUNTY COOK	TOTAL SHEETS 78	SHEET NO. 42
CONTRACT NO. 61F21				
ILLINOIS FED. AID PROJECT				

SCALE: 1"=20' SHEET 12 OF 78 SHEETS STA. TO STA.

FOR INFORMATION ONLY

USER NAME = vnuñez	DESIGNED - HP	REVISED -
	DRAWN - HP	REVISED -
	CHECKED - RP/MG	REVISED -
	DATE 08/13/2021	REVISED -

STATE OF ILLINOIS  
DEPARTMENT OF TRANSPORTATION

EXISTING AS-BUILT TRAFFIC PLANS

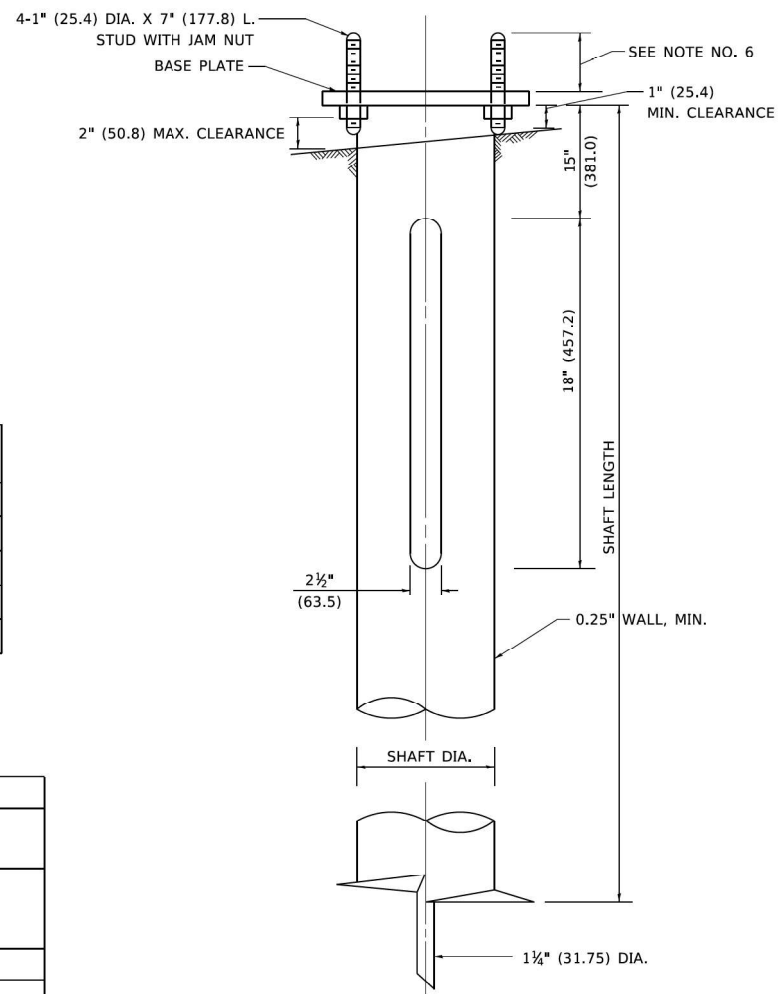
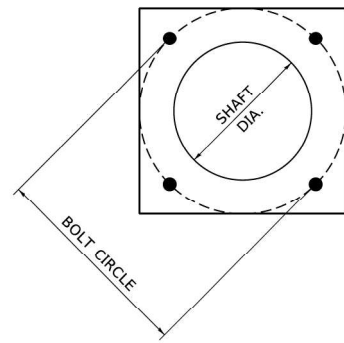
F.A.P. RTE. 351	SECTION 2020-217-L	COUNTY COOK	TOTAL SHEETS 23	SHEET NO. 14
CONTRACT NO. 62M93				
ILLINOIS FED. AID PROJECT				

SCALE: SHEET OF SHEETS STA. TO STA.

MODEL: P:\default  
FILE NAME: U:\1011P\02\140601\Task\_Order\13162\MS304\_CADD\CADD\_Sheets\12683-02\12-683-02.dgn



LT-09



**NOTES**

1. ALL DIMENSION IN INCHES (MILLIMETERS) UNLESS OTHERWISE SHOWN.
2. ALL MATERIAL SHALL BE GALVANIZED ACCORDING TO AASHTO M111, UNLESS OTHERWISE SPECIFIED.
3. ALL WELDS SHALL BE CONTINUOUS AND NOT LESS THAN 1#4" (6.35 mm) FILLET WELDS. THE WELDED FOUNDATION SHALL BE CAPABLE OF WITHSTANDING 10,000 FT/LBS (13558.18 n.m) OF INSTALLATION TORQUE APPLIED ABOUT THE AXIS OF THE FOUNDATION.
4. THE HELIX FOUNDATION SHAFT SHALL BE INSTALLED VERTICAL AND THE BASE PLATE SHALL BE IN LEVEL. THE BREAKAWAY COUPLINGS AND HARDWARE SHALL NOT BE USED TO ALIGN THE POLE INSTALLATION.
5. THE CABLE TRENCH SHALL BE BACKFILLED AND FIRMLY COMPACTED BEFORE THE INSTALLATION OF THE LIGHT POLE.
6. THE CONTRACTOR SHALL COORDINATE EXTENSION OF ANCHOR BOLTS ABOVE TOP OF THE BASE PLATE WITH THE BREAKAWAY DEVICE MANUFACTURER'S REQUIREMENTS.
7. ANY VOIDS WITHIN THE METAL FOUNDATION SHALL BE FILLED WITH FINE AGGREGATE.
8. METAL FOUNDATIONS SHALL BE INSTALLED IN UNDISTURBED SOIL. PREDRILLING A PILOT HOLE AND/OR BACKFILLING AROUND THE FOUNDATION IS NOT ALLOWED.
9. THE METAL FOUNDATION SHALL NOT BE INSTALLED TO A TORQUE WHICH EXCEEDS THE MANUFACTURER'S MAXIMUM TORQUE RATING NOR SHALL IT BE INSTALLED TO AN INSTALLATION TORQUE VALUE OF LESS THAN 3,500 FT LB (4.750 KNM). METAL FOUNDATIONS THAT ARE NOT INSTALLED TO FULL INSTALLATION DEPTH OR DO NOT ACHIEVE THE MINIMUM INSTALLATION TORQUE SHALL BE REMOVED AND REPLACED WITH A CONCRETE FOUNDATION AT NO ADDITIONAL COST.
10. THE BASEPLATE SHALL BE PERPENDICULAR TO THE SHAFT AXIS ( $\pm 1^\circ$ ) AND THE HOLE CENTERLINE SHALL BE CONCENTRIC ( $\pm 0.188$ ) TO THE SHAFT AXIS.
11. THE PILOT POINT AND SHAFT AXIS SHALL BE CONCENTRIC ( $\pm 0.125$ ) AND IN LINE ( $\pm 2^\circ$ ).
12. THE BASEPLATE SHALL BE STAMPED WITH THE MANUFACTURERS NAME AND DATE OF MANUFACTURE.

**HELIX FOUNDATION SIZE**

POLE MOUNTING HEIGHT	BOLT CIRCLE	SHAFT DIAMETER	SHAFT LENGTH	BASEPLATE
30 FT.	11 1/2"	8 3/8"	6 FT.	12"x12"x1"
31 FT.-35 FT.	11 1/2"	8 3/8"	6 FT.	12"x12"x1"
36 FT.-40FT.	15"	8 3/8"	6 FT.	15"x15"x1 1/4"
41 FT.-45 FT.	15"	8 3/8"	6 FT.	15"x15"x1 1/4"
46 FT.-50 FT.	15"	10"	8 FT.	15"x15"x1 1/4"

**METAL HELIX FOUNDATION MATERIALS**

ITEM	MATERIAL REQUIREMENT
BASEPLATE	AASHTO M 270M, GRADE 36 (M270M, GRADE 250)
SHAFT	ASTM A 252, GRADE 2 (PHOSPHOROUS 0.04% MAXIMUM, SULFUR 0.05% MAXIMUM)
HELIX SCREW	AASHTO M 183 (ASTM A 635)
PILOT POINT	AASHTO M 270 (ASTM A 575)
ANCHOR RODS/STUDS	AASHTO M 314 (ASTM F 1554)
HEXAGON NUTS	AASHTO M 291M (ASTM A 563) GRADE DH, OR AASHTO M 292 (ASTM A 194) GRADE 2H
WASHERS	AASHTO M 293 (ASTM F 436)

MODEL: Default  
 FILE NAME: \\s1011p01\cscs\148601\Task\_Order\13162M93\04\_CADD\CADD\_Sheets\1621M93-ink-stanord-01.dgn  
 PROJECT: \\s1011p01\cscs\148601\Task\_Order\13162M93\04\_CADD\CADD\_Sheets\1621M93-ink-stanord-01.dgn

USER NAME = vjurnez	DESIGNED - HP	REVISED -	<b>STATE OF ILLINOIS</b> <b>DEPARTMENT OF TRANSPORTATION</b>	<b>LIGHT POLE FOUNDATION, METAL</b>	F.A.P. RTE.	SECTION	COUNTY	TOTAL SHEETS	SHEET NO.	
PLOT SCALE = 2" / in.	CHECKED - RP/MG	REVISED -			SCALE: NONE	SHEET 1 OF 1 SHEETS	STA. TO STA.	<b>BE-305</b> CONTRACT NO.		ILLINOIS FED. AID PROJECT
PLOT DATE = 8/13/2021	DATE - 08/13/2021	REVISED -								



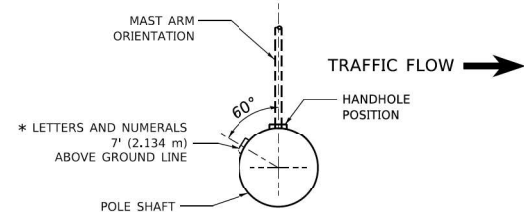
USER NAME = vjurnez	DESIGNED - HP	REVISED -
PLOT SCALE = 2" / in.	CHECKED - RP/MG	REVISED -
PLOT DATE = 8/13/2021	DATE - 08/13/2021	REVISED -

<b>STATE OF ILLINOIS</b> <b>DEPARTMENT OF TRANSPORTATION</b>
---

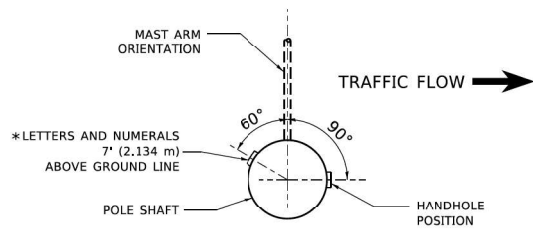
<b>IDOT D1-BUREAU OF ELECTRICAL DETAIL STANDARDS</b>
--

F.A.P. RTE.	SECTION	COUNTY	TOTAL SHEETS	SHEET NO.
351	2020-217-L	COOK	23	15
CONTRACT NO. 62M93				
ILLINOIS FED. AID PROJECT				

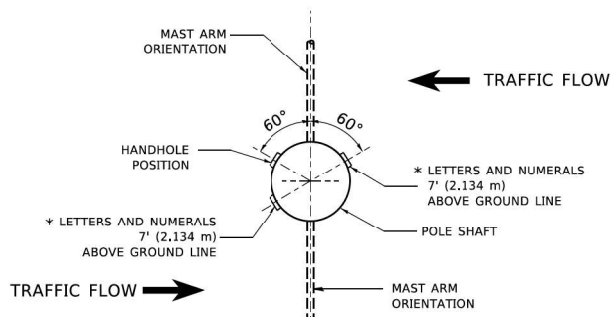
**SD-01**



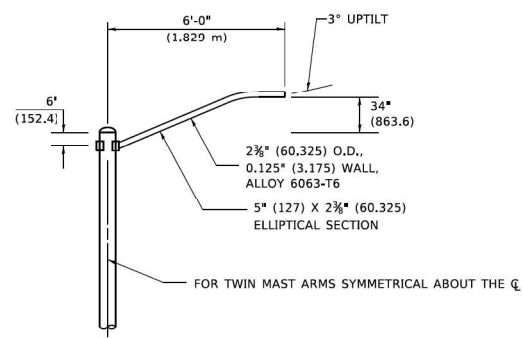
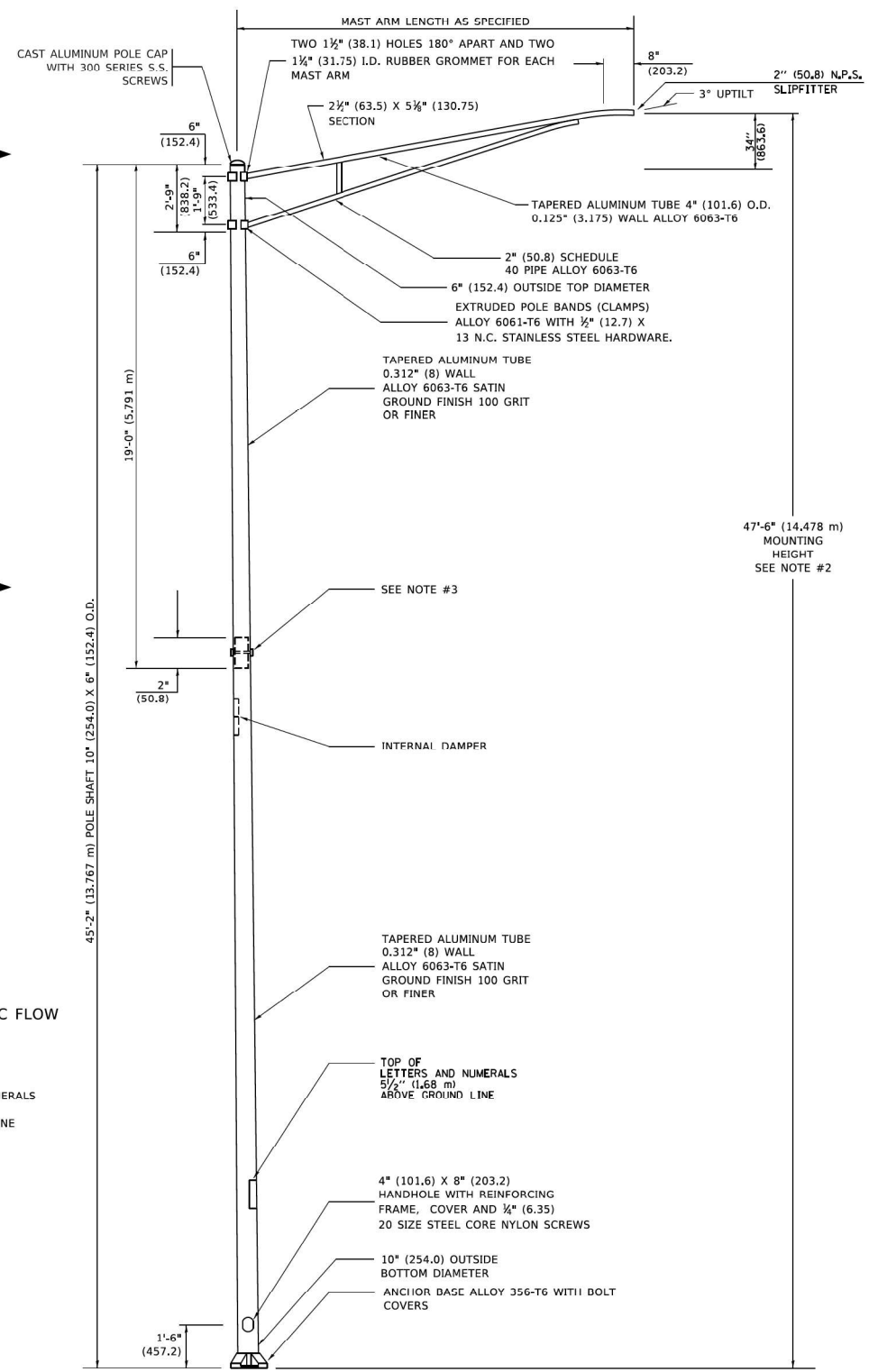
**POSITION OF HANDHOLE AND POLE NUMBER FOR SINGLE MAST ARM POLES MOUNTED ON BRIDGE PARAPET OR BARRIER WALL**



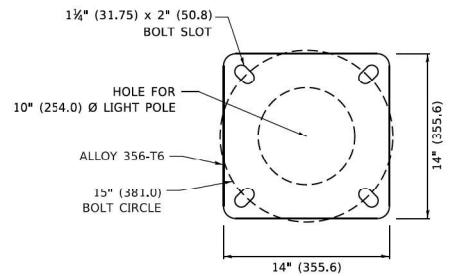
**POSITION OF HANDHOLE AND POLE NUMBER FOR SINGLE MAST ARM POLES**



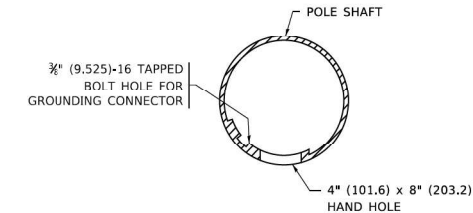
**POSITION OF HANDHOLE AND POLE NUMBER FOR TWIN MAST ARM POLES**



**6' (1.8 m) SINGLE MEMBER MAST ARM (N.T.S.)**



**LIGHT POLE BASE PLATE DETAIL 15 INCH (381.0) BOLT CIRCLE**



**HANDHOLE DETAIL (N.T.S.)**

**NOTES**

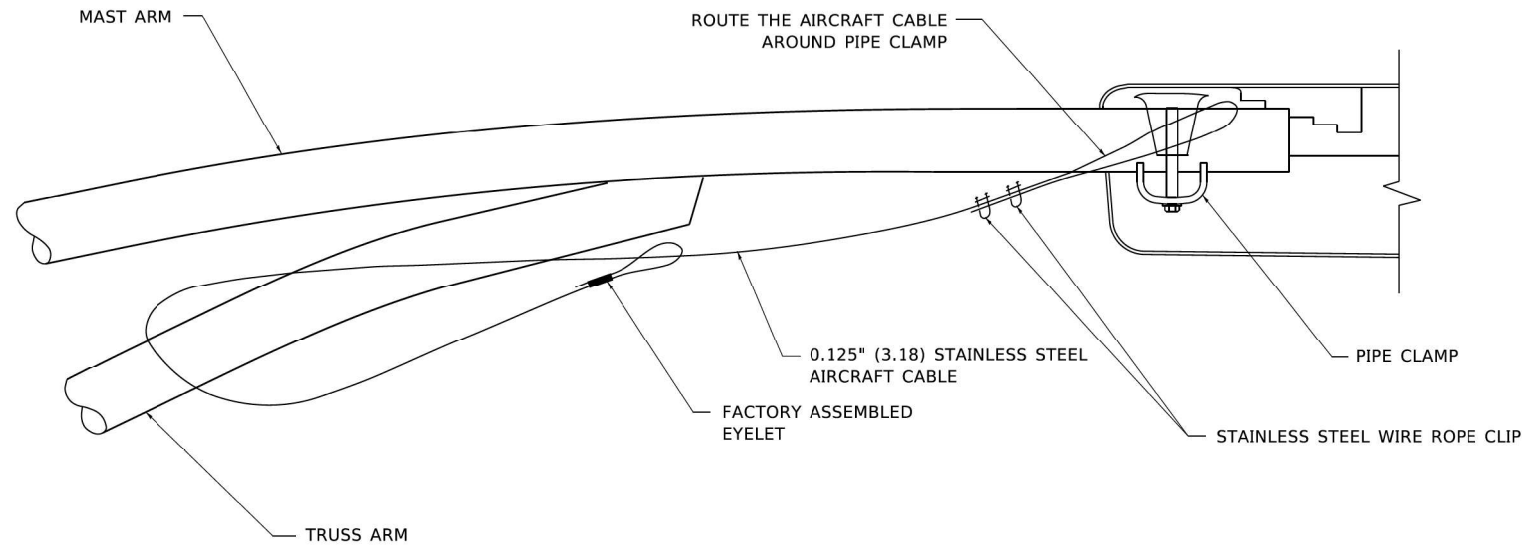
1. ALL DIMENSIONS ARE IN INCHES (MILLIMETERS) UNLESS OTHERWISE SHOWN.
2. MOUNTING HEIGHT IS DEFINED AS THE DISTANCE FROM THE CENTERLINE OF THE TENON TO THE BOTTOM OF THE ANCHOR BASE.
3. TWO PECE SHAFT WILL BE MATCHED MARKED AND INTERCHANGEABLE BETWEEN DIFFERENT UNITS. FIELD DRILLING OF THE HOLES WILL NOT BE ALLOWED.
4. THE LIGHT POLE WILL MEET AASHTO DESIGN CRITERIA AS SPECIFIED.
5. THE INSTALLING CONTRACTOR WILL PROVIDE A UL LISTED GROUNDING CONNECTOR, BURNDY K2C23, T&B SP4DL OR APPROVED EQUAL.
6. LIGHT POLES WILL NOT BE INSTALLED WITHOUT MAST ARMS AND LUMINAIRES.
7. LIGHT POLES WILL BE SET PLUMB ON THE FOUNDATION WITHOUT THE USE OF LEVELING NUTS, WASHERS OR SHIMS.
8. LIGHTING UNIT IDENTIFICATION NUMBERS SHALL BE INSTALLED BEFORE THE LIGHTING UNIT IS ENERGIZED.

MODEL: Default; FILE NAME: \\0101\p01\cscs\148601\Task\_Order\13162493\04\_CADD\CADD\_Sheets\148601\3-2021\Task\_Order\13162493\04\_CADD\CADD\_Sheets\Sheet05.dwg

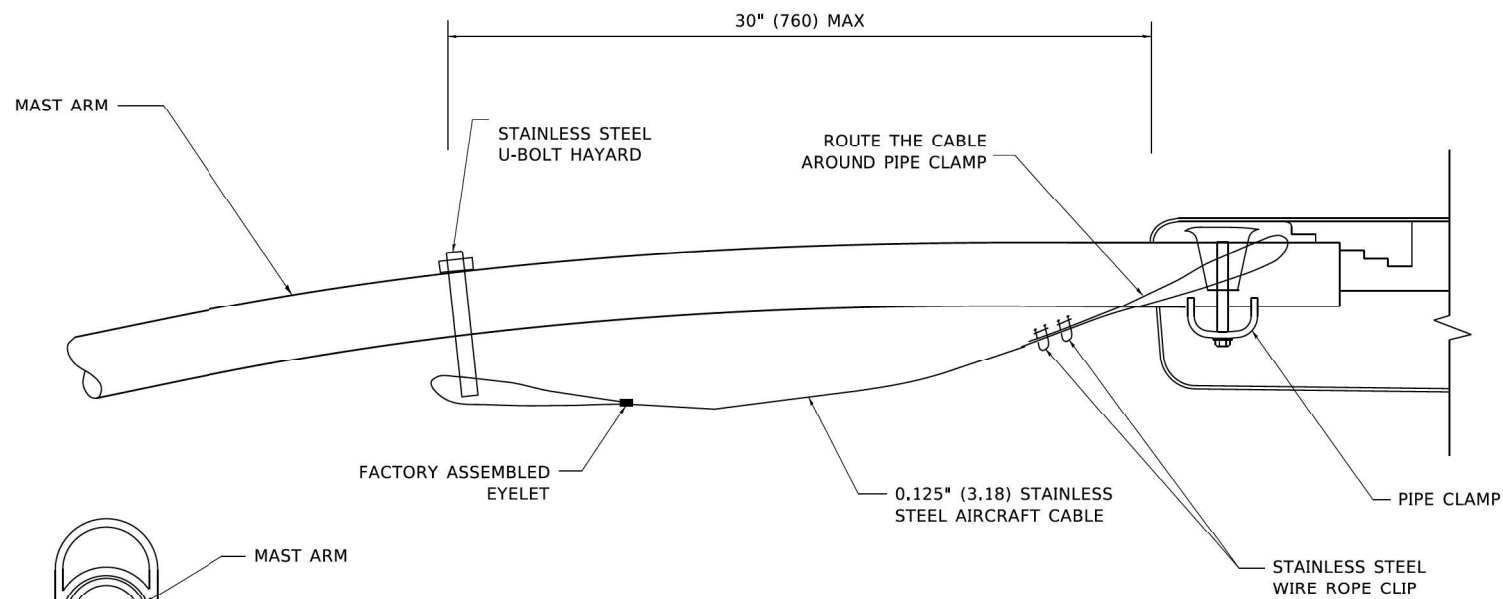
USER NAME = footemj	DESIGNED -	REVISED - R. TOMSONS 09-06-00	<b>STATE OF ILLINOIS DEPARTMENT OF TRANSPORTATION</b>	<b>ALUMINUM LIGHT POLE 47'-6" (14.478 m) MOUNTING HEIGHT</b>			F.A.P. RTE.	SECTION	COUNTY	TOTAL SHEETS	SHEET NO.	
PLOT SCALE = 50,0000 ' / in.	DRAWN -	REVISED - R. TOMSONS 09-03-03		SCALE: NONE			SHEET 1 OF 1 SHEETS STA. TO STA.			<b>BE-400</b>		CONTRACT NO.
PLOT DATE = 4/19/2019	CHECKED -	REVISED - R. TOMSONS 01-18-13		SCALE: NONE			SHEET 1 OF 1 SHEETS STA. TO STA.			ILLINOIS FED. AID PROJECT		
	DATE -	REVISED - R. TOMSONS 03-18-15		SCALE: NONE			SHEET 1 OF 1 SHEETS STA. TO STA.			ILLINOIS FED. AID PROJECT		

USER NAME = vnuirez	DESIGNED - HP	REVISED -
PLOT SCALE = 2 ' / in.	DRAWN - HP	REVISED -
PLOT DATE = 8/13/2021	CHECKED - RP/MG	REVISED -
	DATE - 08/13/2021	REVISED -

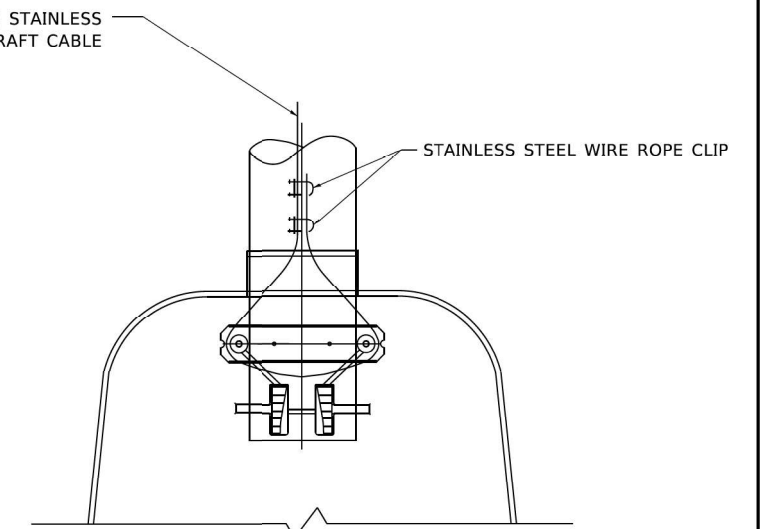
F.A.P. RTE.	SECTION	COUNTY	TOTAL SHEETS	SHEET NO.
351	2020-217-L	COOK	23	16
CONTRACT NO. 62M93				
ILLINOIS FED. AID PROJECT				



**SIDE VIEW (TRUSS ARM)**  
**N.T.S.**



**SIDE VIEW (SINGLE MEMBER OR DAVIT ARM)**  
**N.T.S.**



**BOTTOM VIEW**  
**N.T.S.**

**NOTES:**

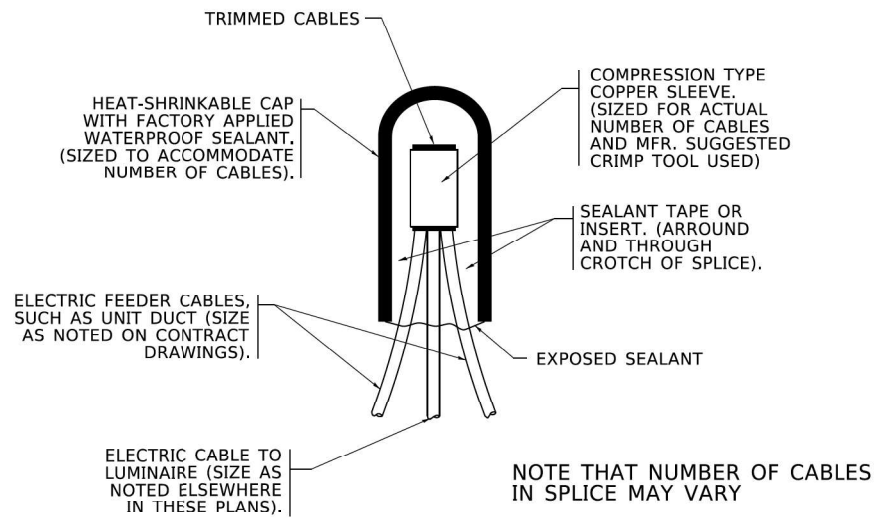
1. ALL DIMENSIONS ARE IN MILLIMETERS (INCHES) UNLESS OTHERWISE SHOWN.
2. CONTRACTOR SHALL ADJUST THE WIRE CLIP TO ELIMINATE ANY SLACK FROM THE WIRE ROPE.
3. THE 0.125" (3.18) STAINLESS STEEL AIRCRAFT CABLE SHALL REMAIN VISIBLE FROM THE GROUND LEVEL.
4. THE BREAKING STRENGTH OF THE CABLE SHALL BE 1700 LBS. MIN.

MODEL: Default  
FILE NAME: \\g0101\p01\c03\1408601\Task\_Order\13162M93\04\_CADD\CADD\_Sheets\ID162M93-04-03.dwg  
PROJECT: \\g0101\p01\c03\1408601\Task\_Order\13162M93\04\_CADD\CADD\_Sheets\ID162M93-04-03.dwg  
PROJECT: \\g0101\p01\c03\1408601\Task\_Order\13162M93\04\_CADD\CADD\_Sheets\ID162M93-04-03.dwg

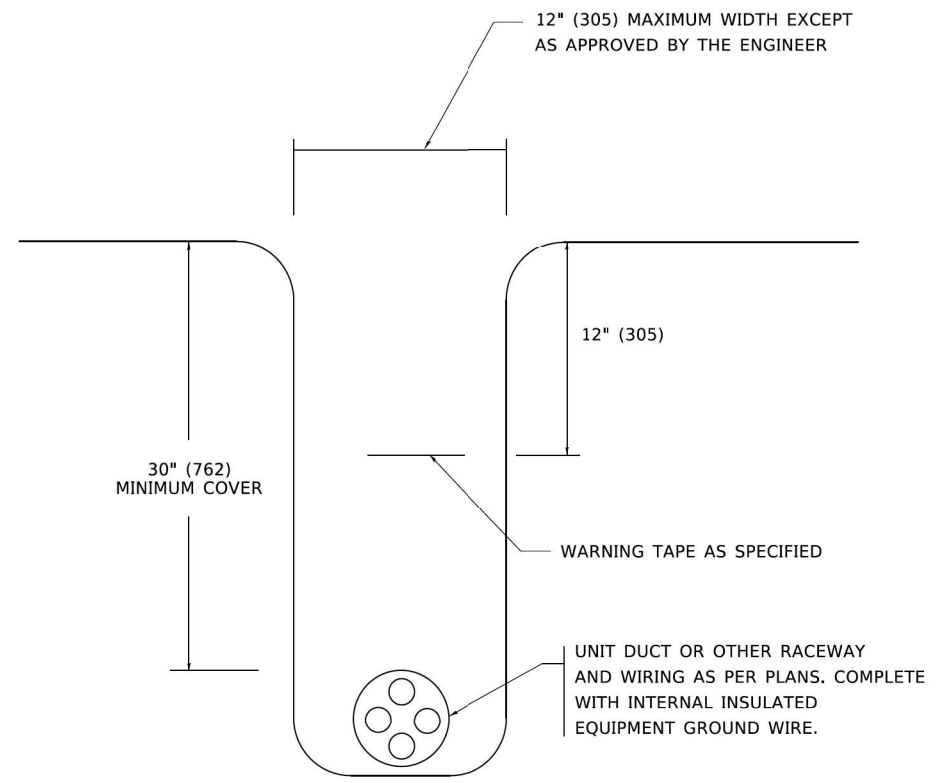
USER NAME = vturnez	DESIGNED -	REVISED - 08-08-03	<b>STATE OF ILLINOIS DEPARTMENT OF TRANSPORTATION</b>		<b>LUMINAIRE SAFETY CABLE ASSEMBLY</b>				F.A. RTE.	SECTION	COUNTY	TOTAL SHEETS	SHEET NO.
PLOT SCALE = 50,0000' / in.	DRAWN -	REVISED -							SCALE: NONE	SHEET 1	OF 1	SHEETS	STA. TO STA.
PLOT DATE = 4/19/2019	CHECKED -	REVISED -	<b>STATE OF ILLINOIS DEPARTMENT OF TRANSPORTATION</b>		<b>IDOT D1-BUREAU OF ELECTRICAL DETAIL STANDARDS</b>				351	2020-217-L	COOK	23	17
	DATE -	REVISED -							SCALE:	SHEET	OF	SHEETS	STA. TO STA.

MODEL: Default  
FILE NAME: \\g0101\p01\c03\1408601\Task\_Order\13162M93\04\_CADD\CADD\_Sheets\ID162M93-04-03.dwg  
PROJECT: \\g0101\p01\c03\1408601\Task\_Order\13162M93\04\_CADD\CADD\_Sheets\ID162M93-04-03.dwg

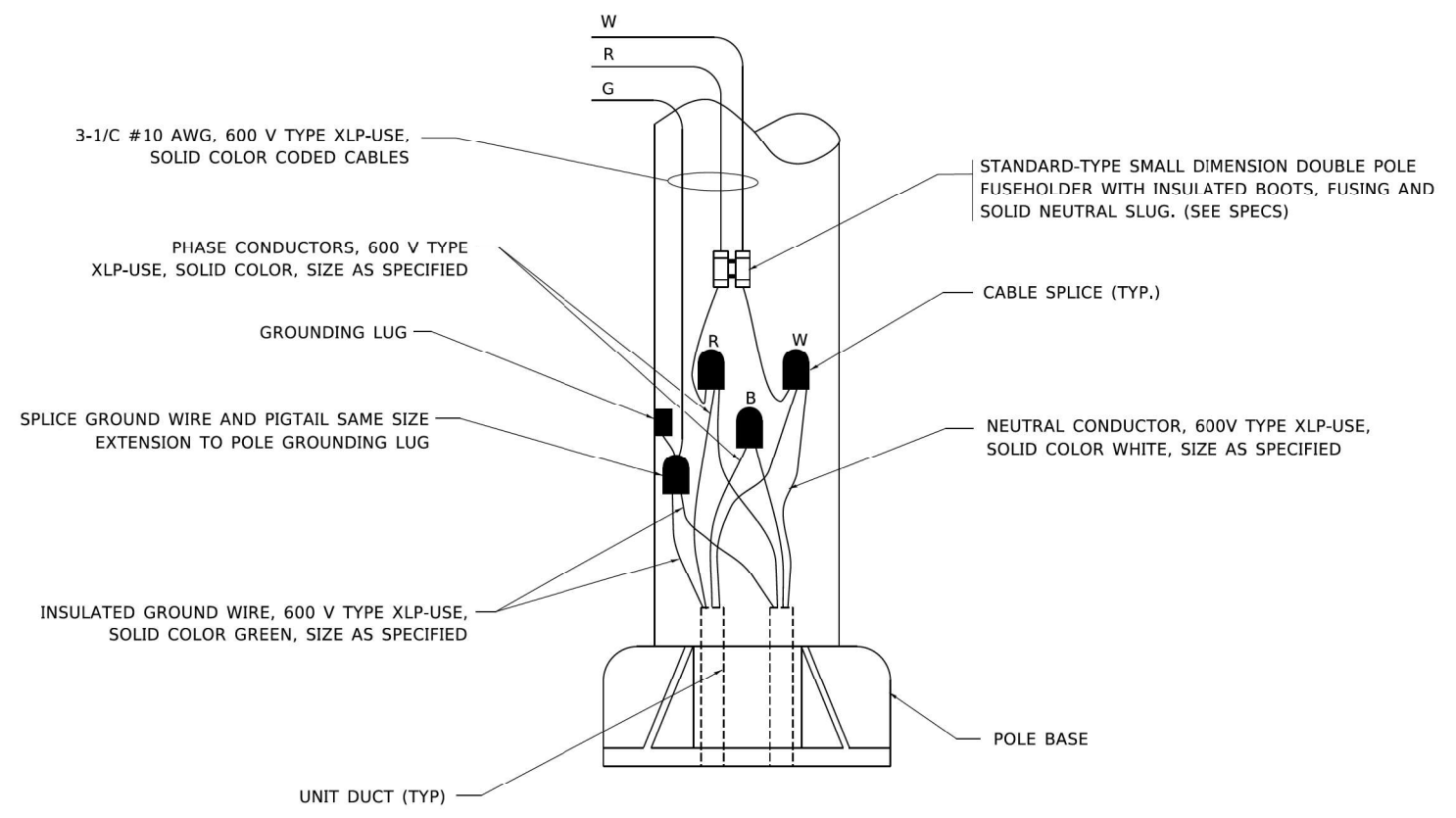




**TYPICAL SPLICE DETAIL**  
**N.T.S.**



**TYPICAL WIRING IN TRENCH DETAIL**  
**N.T.S.**



**POLE WIRING DETAIL**  
**N.T.S.**

PROJECT: ILLINOIS DEPARTMENT OF TRANSPORTATION - BE-702  
 SHEET: BE-702-SD-04  
 DATE: 08/13/2021

USER NAME = leysa	DESIGNED -	REVISED - 02/04/2020	STATE OF ILLINOIS DEPARTMENT OF TRANSPORTATION		MISC. ELECTRICAL DETAILS SHEET A			F.A. RTE.	SECTION	COUNTY	TOTAL SHEETS	SHEET NO.
PLOT SCALE = 30,0000' / in.	DRAWN -	REVISED -						SCALE: NONE	SHEET 1 OF 1 SHEETS	STA. TO STA.	BE-702	CONTRACT NO.
PLOT DATE = 10/2020	CHECKED -	REVISED -						ILLINOIS FED. AID PROJECT				

**SD-04**

MODEL: P:\default  
 FILE NAME: V:\10110101\Projects\1486601\Task-Order\13162M9304\_CADD\CADD-Sheets\1621M93-2-ctc-station-04.dgn



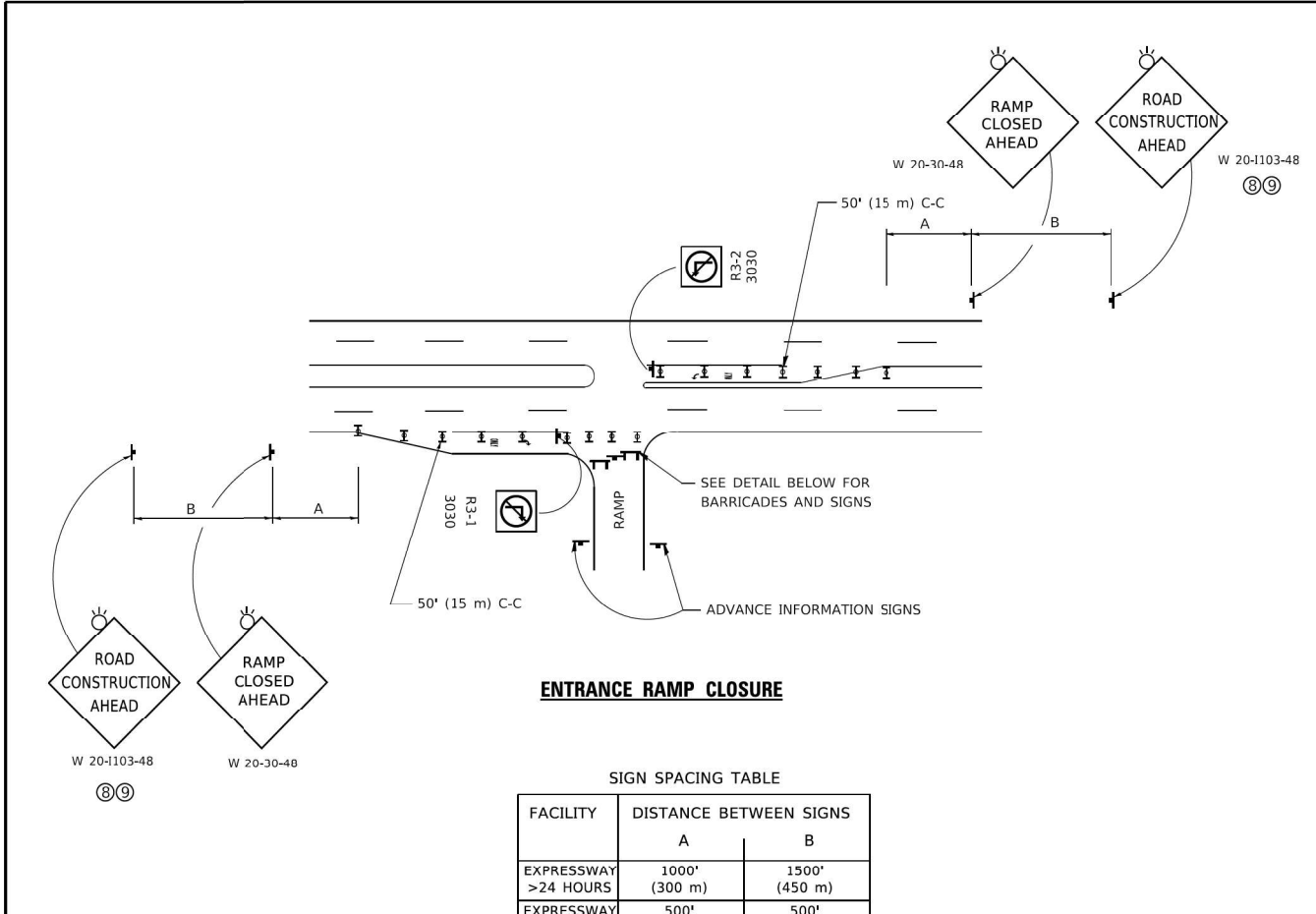
USER NAME = vnuirez	DESIGNED - HP	REVISED -	STATE OF ILLINOIS DEPARTMENT OF TRANSPORTATION		IDOT D1-BUREAU OF ELECTRICAL DETAIL STANDARDS			F.A.P. RTE.	SECTION	COUNTY	TOTAL SHEETS	SHEET NO.
PLOT SCALE = 2' / in.	DRAWN - HP	REVISED -						SCALE:	SHEET OF SHEETS	STA. TO STA.	2020-217-L	COOK
PLOT DATE = 8/13/2021	CHECKED - RP/MG	REVISED -						ILLINOIS FED. AID PROJECT				

STATE OF ILLINOIS  
DEPARTMENT OF TRANSPORTATION

IDOT D1-BUREAU OF ELECTRICAL DETAIL STANDARDS

F.A.P. RTE.	SECTION	COUNTY	TOTAL SHEETS	SHEET NO.
	2020-217-L	COOK	23	18
CONTRACT NO. 62M93				
ILLINOIS FED. AID PROJECT				



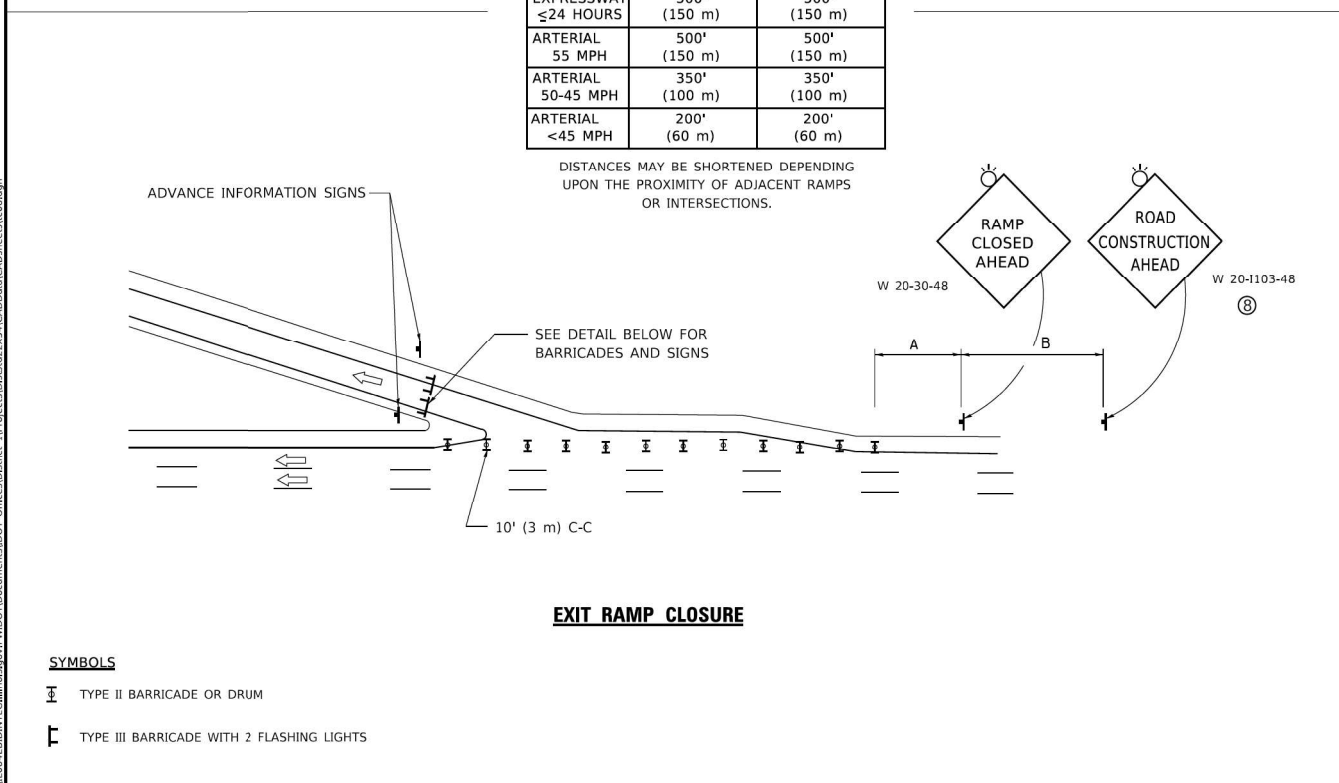


**ENTRANCE RAMP CLOSURE**

**SIGN SPACING TABLE**

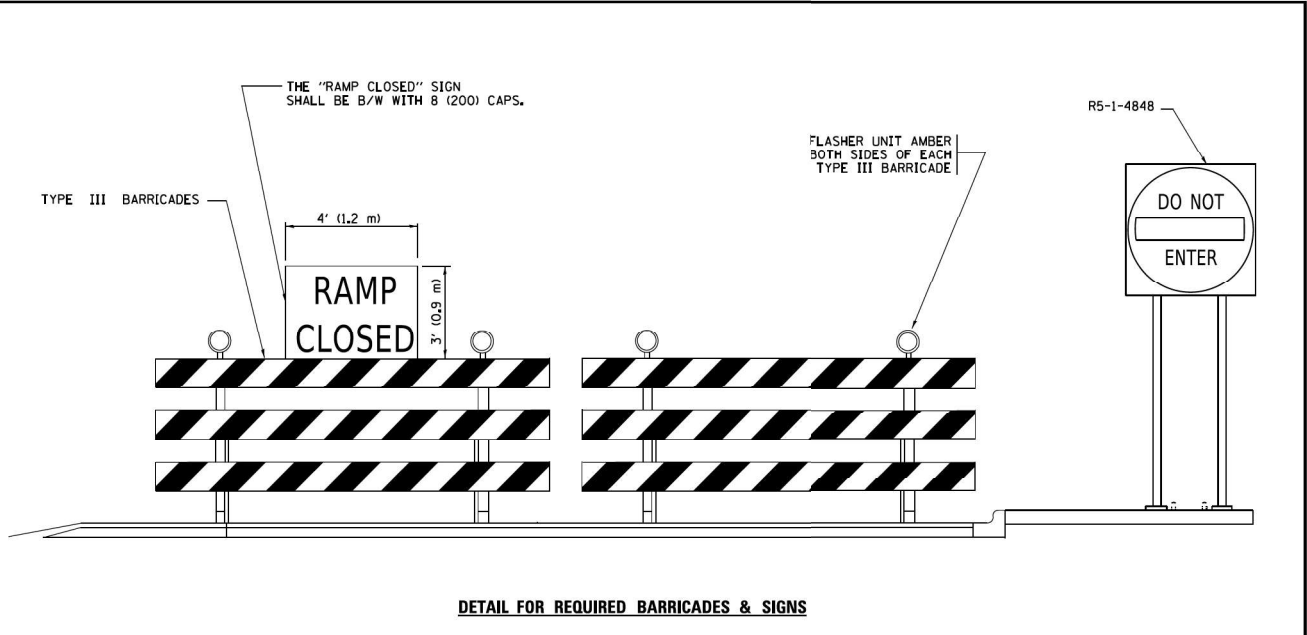
FACILITY	DISTANCE BETWEEN SIGNS	
	A	B
EXPRESSWAY >24 HOURS	1000' (300 m)	1500' (450 m)
EXPRESSWAY ≤24 HOURS	500' (150 m)	500' (150 m)
ARTERIAL 55 MPH	500' (150 m)	500' (150 m)
ARTERIAL 50-45 MPH	350' (100 m)	350' (100 m)
ARTERIAL <45 MPH	200' (60 m)	200' (60 m)

DISTANCES MAY BE SHORTENED DEPENDING UPON THE PROXIMITY OF ADJACENT RAMPS OR INTERSECTIONS.

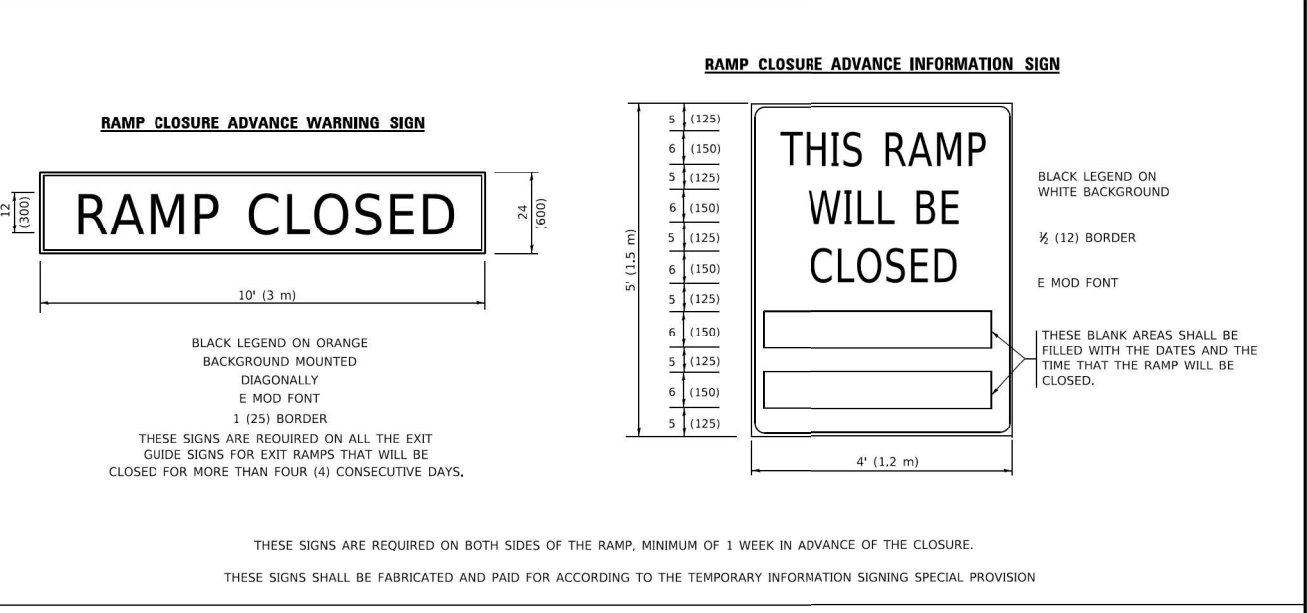


**EXIT RAMP CLOSURE**

- SYMBOLS**
- TYPE II BARRICADE OR DRUM
  - TYPE III BARRICADE WITH 2 FLASHING LIGHTS



**DETAIL FOR REQUIRED BARRICADES & SIGNS**



**RAMP CLOSURE ADVANCE INFORMATION SIGN**

**RAMP CLOSURE ADVANCE WARNING SIGN**

BLACK LEGEND ON ORANGE BACKGROUND MOUNTED DIAGONALLY  
E MOD FONT  
1 (25) BORDER  
THESE SIGNS ARE REQUIRED ON ALL THE EXIT GUIDE SIGNS FOR EXIT RAMPS THAT WILL BE CLOSED FOR MORE THAN FOUR (4) CONSECUTIVE DAYS.

THESE SIGNS ARE REQUIRED ON BOTH SIDES OF THE RAMP, MINIMUM OF 1 WEEK IN ADVANCE OF THE CLOSURE.  
THESE SIGNS SHALL BE FABRICATED AND PAID FOR ACCORDING TO THE TEMPORARY INFORMATION SIGNING SPECIAL PROVISION

**GENERAL NOTES:**

- CONES MAY BE SUBSTITUTED FOR DRUMS OR TYPE II BARRICADES DURING DAY OPERATIONS. CONES SHALL BE A MINIMUM OF 28 (700) HIGH.
- VERTICAL BARRICADES SHALL NOT BE USED FOR RAMP CLOSURES.
- A FLAGGER SHALL BE POSITIONED AT EACH CLOSED RAMP THAT IS OPEN TO CONSTRUCTION VEHICLES, PRECEDED BY A W20-7 FLAGGER WARNING SIGN.
- ALL ROUTE MARKERS AND TRAILBLAZER ASSEMBLIES WHICH DIRECT MOTORISTS TO A CLOSED ENTRANCE RAMP SHALL BE COVERED WHEN THE RAMP IS CLOSED FOR MORE THAN FOUR (4) DAYS.
- THE SIGNING AND BARRICADING WHICH IS REQUIRED BY THIS DETAIL SHALL BE INCLUDED IN THE COST OF TRAFFIC CONTROL AND PROTECTION (EXPRESSWAYS).
- AUTHORIZATION FROM THE DISTRICT'S BUREAU OF TRAFFIC IS REQUIRED FOR ALL RAMP CLOSURES.
- THE RAMP CLOSURE ADVANCE INFORMATION SIGNS SHALL BE ERECTED IF THE CLOSURE TIME EXCEEDS TWENTY-FOUR (24) HOURS. ADDITIONAL ADVANCE WARNING SIGNS ON EXIT GUIDE SIGNING WILL BE REQUIRED FOR EXIT RAMP CLOSURES THAT EXCEED FOUR (4) DAYS IN LENGTH.
- ROAD CONSTRUCTION AHEAD SIGNS MAY BE OMITTED WHEN THIS DETAIL IS USED IN CONIUNCTION WITH OTHER TRAFFIC CONTROL THAT ALREADY INCLUDES A ROAD CONSTRUCTION AHEAD SIGN.
- ARTERIAL ROAD CONSTRUCTION AHEAD SIGNS SHALL BE INSTALLED ON THE LEFT SIDE OF TRAFFIC IF THE MEDIAN IS MORE THAN 10 FT WIDE.

ALL DIMENSIONS ARE IN INCHES (MILLIMETERS) UNLESS OTHERWISE SHOWN.

USER NAME = footemj	DESIGNED - D.W.S.	REVISED - S.P.B_01-07
PLOT SCALE = 50.0000' / in.	CHECKED -	REVISED - S.P.B_12-09
PLOT DATE = 3/4/2019	DATE - 02-83	REVISED - M.D_06-13
		REVISED - M.D_01-18

**STATE OF ILLINOIS  
DEPARTMENT OF TRANSPORTATION**

<b>ENTRANCE AND EXIT RAMP CLOSURE DETAILS</b>		F.A. RTE.	SECTION	COUNTY	TOTAL SHEETS	SHEET NO.
SCALE: NONE	SHEET 1 OF 1 SHEETS	TC-08				
		ILLINOIS	CONTRACT NO.			
		ILLINOIS FED. AID PROJECT				

MODEL Path: \\s1011p01\cscs\148601\Task-Order\13162\MS304\_CADD\CADD-Sheets\1621\MS3-entr-ramp-closure-05.dgn  
FILE NAME: \\s1011p01\cscs\148601\Task-Order\13162\MS304\_CADD\CADD-Sheets\1621\MS3-entr-ramp-closure-05.dgn

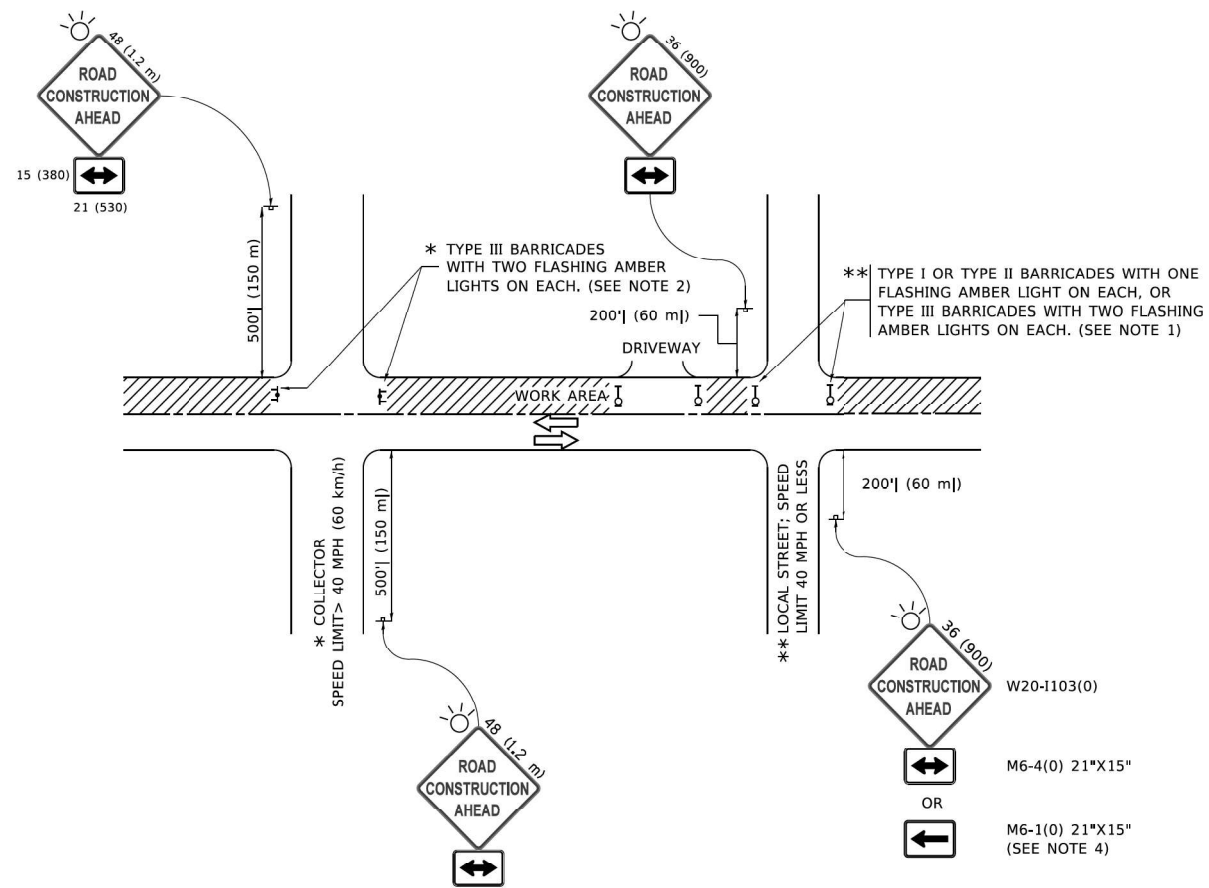


USER NAME = vnuirez	DESIGNED - HP	REVISED -
PLOT SCALE = 2' / in.	CHECKED - RP/MG	REVISED -
PLOT DATE = 8/13/2021	DATE - 08/12/2021	REVISED -

**STATE OF ILLINOIS  
DEPARTMENT OF TRANSPORTATION**

<b>IDOT D1-TRAFFIC CONTROL STANDARDS</b>		F.A.P. RTE.	SECTION	COUNTY	TOTAL SHEETS	SHEET NO.
SCALE:	SHEET OF SHEETS	351	2020-217-L	COOK	23	19
		CONTRACT NO. 62M93				
		ILLINOIS FED. AID PROJECT				

**SD-05**



**NOTES:**

- SIDE ROAD WITH A SPEED LIMIT OF 40 MPH (60 km/h) OR LESS AS SHOWN ON THE DRAWING AND AS DIRECTED BY THE ENGINEER:
  - ONE "ROAD CONSTRUCTION AHEAD" SIGN 36 x 36 (900x900) WITH A FLASHER MOUNTED ON IT APPROXIMATELY 200' (60 m) IN ADVANCE OF THE MAIN ROUTE.
  - THE CLOSED PORTION OF THE MAIN ROUTE SHALL BE PROTECTED BY BLOCKING WITH TYPE I, TYPE II OR TYPE III BARRICADES, 1/3 OF THE CROSS SECTION OF THE CLOSED PORTION.
- SIDE ROAD WITH A SPEED LIMIT GREATER THAN 40 MPH (60 km/h) AS SHOWN ON THE DRAWING AND AS DIRECTED BY THE ENGINEER:
  - ONE "ROAD CONSTRUCTION AHEAD" SIGN 48 x 48 (1.2 m x 1.2 m) WITH A FLASHER MOUNTED ON IT APPROXIMATELY 500' (150 m) IN ADVANCE OF THE MAIN ROUTE.  
THE CLOSED PORTION OF THE MAIN ROUTE SHALL BE PROTECTED BY BLOCKING WITH TYPE III BARRICADES, 1/2 OF THE CROSS SECTION OF THE CLOSED PORTION.
- CONES MAY BE SUBSTITUTED FOR BARRICADES OR DRUMS AT HALF THE SPACING DURING DAY OPERATIONS. CONES SHALL BE A MINIMUM OF 28 (710) IN HEIGHT.  
WHEN THE SIDE ROAD LIES BETWEEN THE BEGINNING OF THE MAINLINE
- SIGNING AND THE WORK ZONE, A SINGLE HEADED ARROW (M6-1) SHALL BE USED IN LIEU OF THE DOUBLE HEADED ARROW (M6-4).
- WHEN WORK IS BEING PERFORMED ON A SIDE ROAD OR DRIVEWAY, FOLLOW THE APPLICABLE STANDARD(S). THE DIRECTIONAL ARROW (M6-1 OR M6-4) SHALL BE COVERED OR REMOVED WHEN NO LONGER CONSISTENT WITH THE TRAFFIC CONTROL SET-UP.
- ADVANCE WARNING SIGNS ARE TO BE OMITTED ON DRIVEWAYS UNLESS OTHERWISE SPECIFIED IN THE PLANS OR BY THE ENGINEER.
- THE TRAFFIC CONTROL AND PROTECTION FOR SIDE ROADS, INTERSECTIONS, AND DRIVEWAYS SHALL BE INCLUDED IN THE COST OF SPECIFIED TRAFFIC CONTROL STANDARDS OR ITEMS.

All dimensions are in inches (millimeters) unless otherwise shown.

MODEL: P:\m\h\... FILE NAME: ... CADD\CADD\_Sheets\1162\M93-2-ctr-ctm93-06.dgn  
 FILE NAME: ... \Documents\DOT\_office\... \Public\... \CADData\Cabnet\...

USER NAME = footemj	DESIGNED - L.H.A.	REVISED - A. HOUSEH 10-15-96	<b>STATE OF ILLINOIS DEPARTMENT OF TRANSPORTATION</b>	<b>TRAFFIC CONTROL AND PROTECTION FOR SIDE ROADS, INTERSECTIONS, AND DRIVEWAYS</b>			F.A.P. RTE.	SECTION	COUNTY	TOTAL SHEETS	SHEET NO.
PLOT SCALE = 50.0000' / in.	DRAWN -	REVISED - T. RAMMACHER 01-06-00		SCALE: NONE	SHEET 1	OF 1 SHEETS	STA.	TO STA.	TC-10	CONTRACT NO.	
PLOT DATE = 3/4/2019	CHECKED -	REVISED - A. SCHUETZE 07-01-13							ILLINOIS	FED. AID PROJECT	
	DATE - 06-89	REVISED - A. SCHUETZE 09-15-16									

MODEL: P:\m\h\... FILE NAME: ... CADD\CADD\_Sheets\1162\M93-2-ctr-ctm93-06.dgn  
 FILE NAME: ... \Documents\DOT\_office\... \Public\... \CADData\Cabnet\...



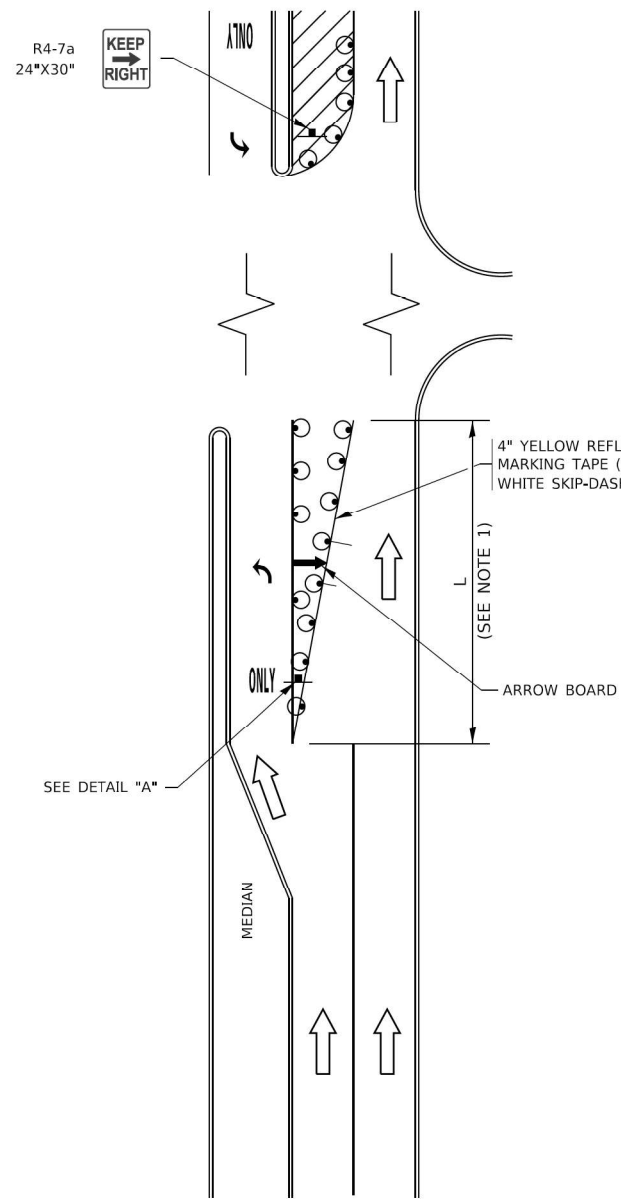
USER NAME = vnuñez	DESIGNED - HP	REVISED -
PLOT SCALE = 2' / in.	DRAWN - HP	REVISED -
PLOT DATE = 8/13/2021	CHECKED - RP/MG	REVISED -
	DATE - 08/12/2021	REVISED -

**STATE OF ILLINOIS  
DEPARTMENT OF TRANSPORTATION**

<b>IDOT D1-TRAFFIC CONTROL STANDARDS</b>					
SCALE:	SHEET	OF	SHEETS	STA.	TO STA.

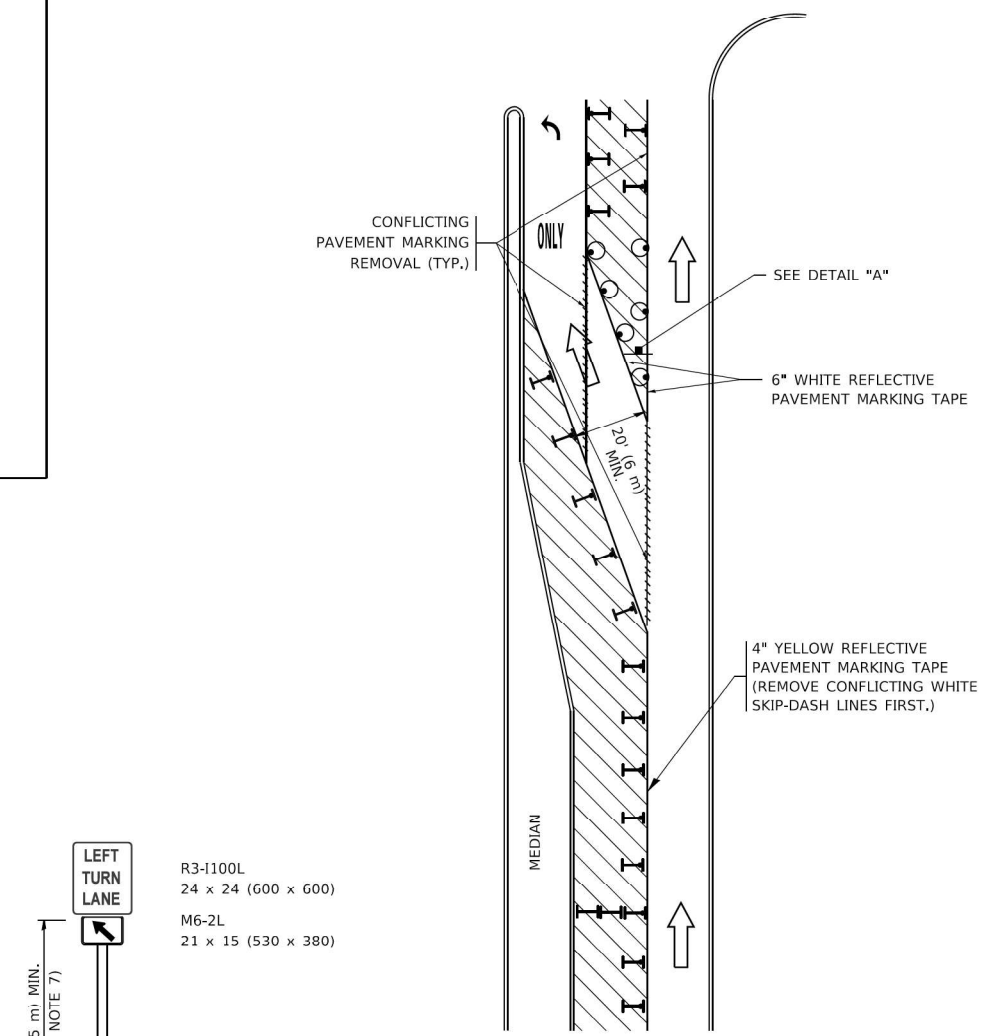
F.A.P. RTE.	SECTION	COUNTY	TOTAL SHEETS	SHEET NO.
351	2020-217-L	COOK	23	20
			CONTRACT NO. 62M93	
		ILLINOIS	FED. AID PROJECT	

### TURN BAY ENTRANCE AT START OF LANE CLOSURE TAPER



**FIGURE 1**

### TURN BAY ENTRANCE WITHIN A LANE CLOSURE



**FIGURE 2**

**DETAIL A**

#### LEGEND

- WORK AREA
- LANE OPEN TO TRAFFIC
- ARROW BOARD
- TYPE I OR II BARRICADE OR DRUM WITH STEADY BURN LIGHT
- DRUM WITH STEADY BURN LIGHT
- SIGN ASSEMBLY
- TYPE I OR II CHECK BARRICADE WITH FLASHING LIGHT

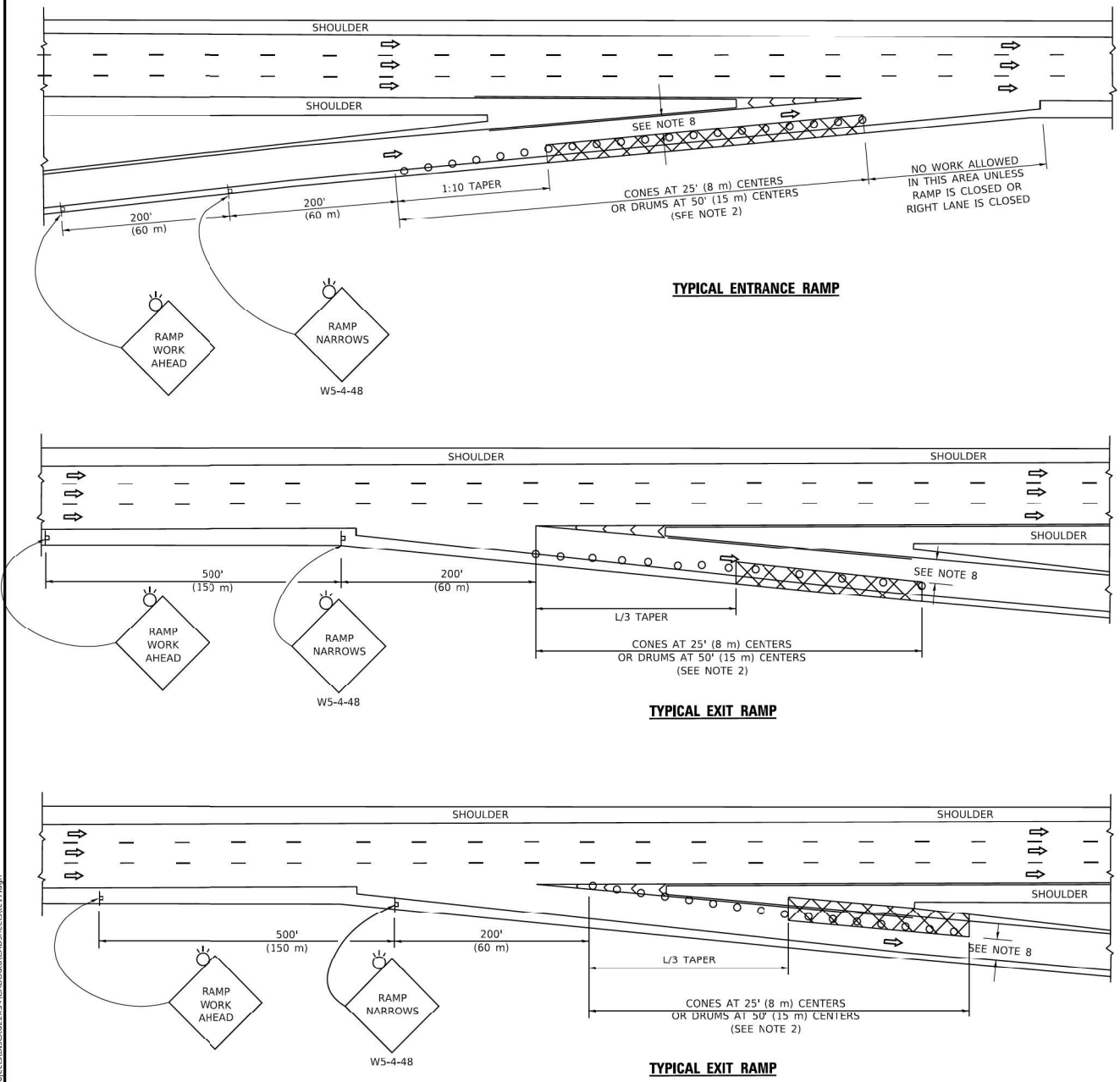
- #### NOTES:
- A) WHEN "L" IS ≤ THE STORAGE LENGTH OF THE TURN LANE (AS SHOWN IN FIG. 1), USE FIGURE 1.
  - B) WHEN "L" IS > THE STORAGE LENGTH OF THE TURN LANE OR THE TURN LANE IS WITHIN THE LANE CLOSURE, USE FIGURE 2.
  - CONES MAY BE SUBSTITUTED FOR BARRICADES OR DRUMS AT HALF THE SPACING DURING DAY OPERATIONS. CONES SHALL BE A MINIMUM OF 28 (710) IN HEIGHT.
  - LIGHTS WILL NOT BE REQUIRED ON BARRICADES OR DRUMS FOR DAY OPERATIONS. ALL LIGHTS SHALL BE MONODIRECTIONAL.
  - REFLECTIVE TEMPORARY PAVEMENT MARKINGS SHALL BE PLACED THROUGHOUT THE BARRICADED AREAS OF EACH TURN BAY AS SHOWN WHERE THE CLOSURE TIME IS GREATER THAN FOURTEEN (14) DAYS.
  - THIS APPLICATION ALSO APPLIES WHEN WORK IS BEING PERFORMED IN THE RIGHT LANE(S) AND THE RIGHT TURN BAY IS TO REMAIN OPEN. UNDER THIS CONDITION, "RIGHT TURN LANE" R3-1100R 24 x 24 (600 x 600) AND M6-2R 21 x 15 (530 x 380) SHALL BE USED.
  - THESE CONTROLS SHALL SUPPLEMENT MAINLINE TRAFFIC CONTROL FOR LANE CLOSURES.
  - THE SIGNS SHALL BE MOUNTED ABOVE THE BARRICADES/DRUMS ON SEPARATE SIGN SUPPORTS THAT MEET NCHRP 350 OR MASH REQUIREMENTS.
  - TRAFFIC CONTROL AND PROTECTION AT TURN BAYS (TO REMAIN OPEN TO TRAFFIC) SHALL BE INCLUDED IN THE COST OF SPECIFIED TRAFFIC CONTROL STANDARDS OR ITEMS.

MODEL Path: \\s1011p01\cscs\148601\Task\_Order\13162M9304\_CADD\CADD\_Sheets\162M93-CHK-TRANS\rd-07.dgn  
 FILE NAME: \\s1011p01\cscs\148601\Task\_Order\13162M9304\_CADD\CADD\_Sheets\162M93-CHK-TRANS\rd-07.dgn

USER NAME = footemj	DESIGNED - T. RAMMACHER 09-08-94	REVISED - R. BORO 09-14-09	<b>STATE OF ILLINOIS DEPARTMENT OF TRANSPORTATION</b>		<b>TRAFFIC CONTROL AND PROTECTION AT TURN BAYS (TO REMAIN OPEN TO TRAFFIC)</b>			F.A. RTE.	SECTION	COUNTY	TOTAL SHEETS	SHEET NO.
PLOT SCALE = 50.0000' / in.	CHECKED - A. HOUSEH 10-12-96	REVISED - A. SCHUETZE 09-15-16						SCALE: NONE		SHEET 1 OF 1 SHEETS	STA. TO STA.	TC-14
PLOT DATE = 3/4/2019	DATE - T. RAMMACHER 01-06-00	REVISED -						ILLINOIS		FED. AID PROJECT		

All dimensions are in inches (millimeters) unless otherwise shown.

**PARTIAL RAMP CLOSURE DETAILS**



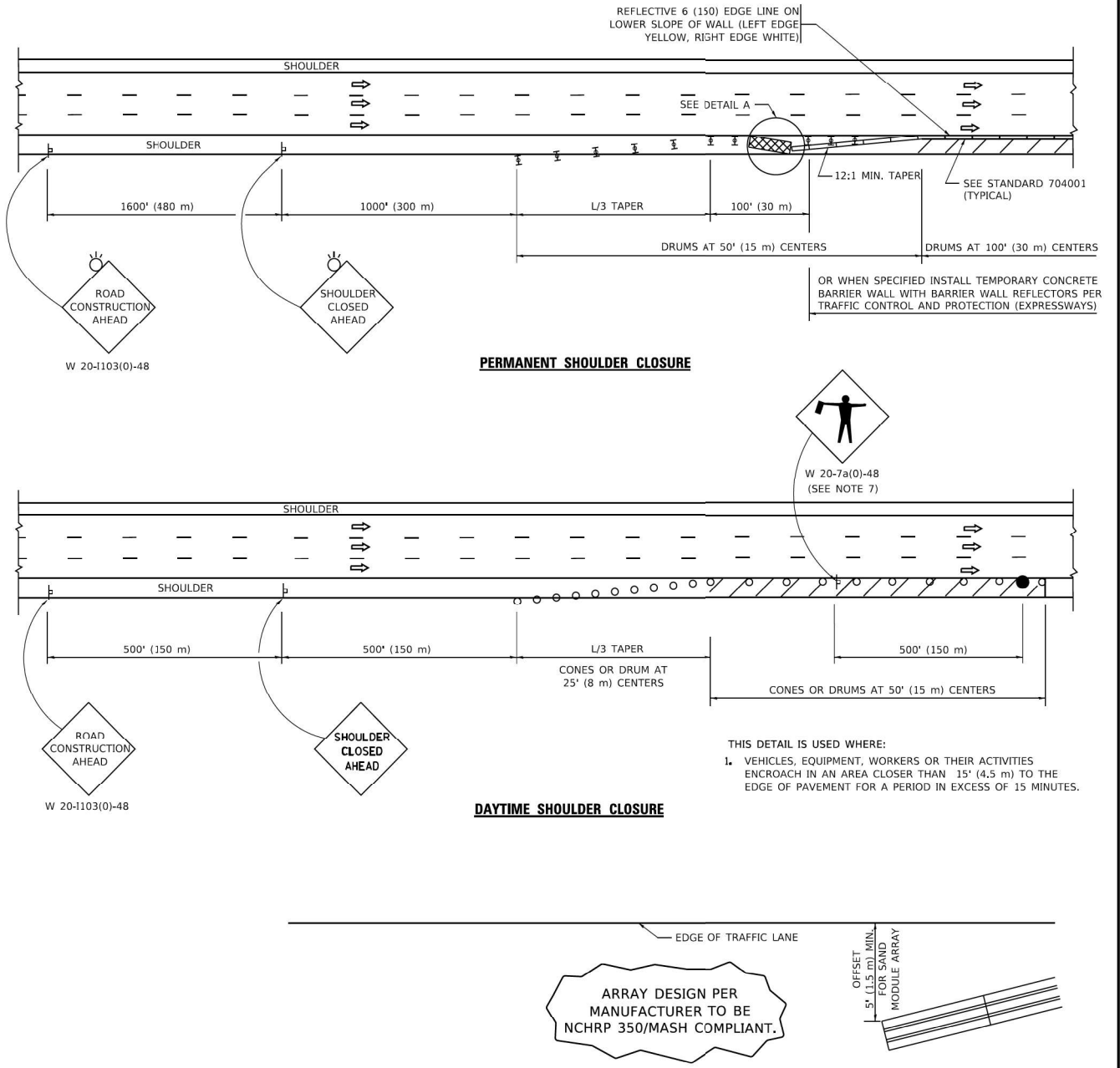
- SYMBOLS**
- ACTIVE WORK AREA
  - SIGN ON PORTABLE OR PERMANENT SUPPORT
  - FLAGGER WITH CONTROL SIGN
  - TYPE II BARRICADE OR DRUM
  - CONE, DRUM OR BARRICADE
  - IMPACT ATTENUATOR OF TYPE AND TEST LEVEL SPECIFIED

- GENERAL NOTES:**
- THE "L" DISTANCE EQUALS:  

SPEED LIMIT	FORMULAS
45 mph (80 km/h)	METRIC ENGLISH
OR GREATER	$L=0.65(W)(S)$ $L=(W)(S)$

W = WIDTH OF OFFSET IN FEET (METERS)  
 S = NORMAL POSTED SPEED MPH (KM/H)
  - TYPE II BARRICADES OR DRUMS ARE REQUIRED FOR ALL NIGHTTIME CLOSURES. TYPE II BARRICADES OR DRUMS WITH MONODIRECTIONAL STEADY BURN LIGHTS ARE REQUIRED FOR DELINEATING OBSTACLES, EXCAVATIONS, OR HAZARDS EXCEEDING 100 FT (30m) IN LENGTH AT NIGHT.
  - ALL SIGNS SHALL BE POST MOUNTED IF THE CLOSURE TIME EXCEEDS FOUR DAYS.
  - FLASHING LIGHTS SHALL BE USED DURING THE HOURS OF DARKNESS AND SHALL BE INSTALLED ABOVE THE FIRST TWO SETS OF SIGNS.

**SHOULDER CLOSURE DETAILS**



ARRAY DESIGN PER MANUFACTURER TO BE NCHRP 350/MASH COMPLIANT.

THIS DETAIL IS USED WHERE:  
 1. VEHICLES, EQUIPMENT, WORKERS OR THEIR ACTIVITIES ENCRoACH IN AN AREA CLoSER THAN 15' (4.5 m) TO THE EDGE OF PAVEMENT FOR A PERIOD IN EXCESS OF 15 MINUTES.

ALL DIMENSIONS ARE IN INCHES (MILLIMETERS) UNLESS OTHERWISE SHOWN.

USER NAME = footemj	DESIGNED -	REVISED - S.P.B. 01-07
PLOT SCALE = 50.0000' / in.	DRAWN - D.W.S.	REVISED - S.P.B. 12-09
PLOT DATE = 3/4/2019	CHECKED -	REVISED - M.D. 06-13
	DATE - 11-96	REVISED - M.D. 01-18

**STATE OF ILLINOIS  
DEPARTMENT OF TRANSPORTATION**

TRAFFIC CONTROL DETAILS FOR FREEWAY SHOULDER CLOSURES AND PARTIAL RAMP CLOSURES			
F.A. RTE.	SECTION	COUNTY	TOTAL SHEETS
	TC-17		
SCALE: NONE		SHEET 1 OF 1 SHEETS	STA. TO STA.

F.A.P. RTE.	SECTION	COUNTY	TOTAL SHEETS	SHEET NO.
351	2020-217-L	COOK	23	22
CONTRACT NO. 62M93				
ILLINOIS FED. AID PROJECT				

USER NAME = vnuirez	DESIGNED - HP	REVISED -
PLOT SCALE = 2' / in.	DRAWN - HP	REVISED -
PLOT DATE = 8/13/2021	CHECKED - RP/MG	REVISED -
	DATE - 08/12/2021	REVISED -

**STATE OF ILLINOIS  
DEPARTMENT OF TRANSPORTATION**

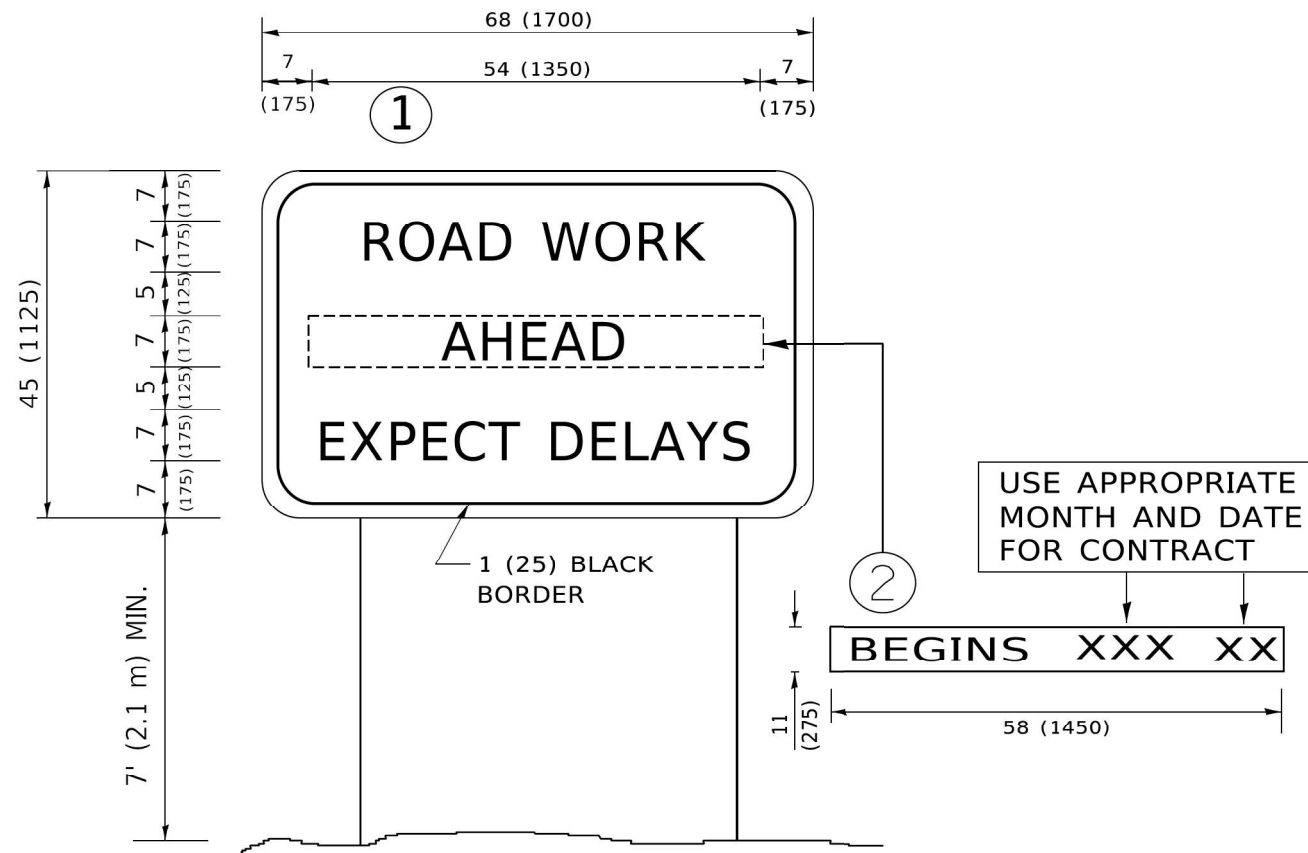
IDOT D1-TRAFFIC CONTROL STANDARDS			
SCALE:	SHEET	OF	SHEETS
			STA. TO STA.

F.A.P. RTE.	SECTION	COUNTY	TOTAL SHEETS	SHEET NO.
351	2020-217-L	COOK	23	22
CONTRACT NO. 62M93				
ILLINOIS FED. AID PROJECT				

MODEL Path: \\...  
 FILE NAME: \\...  
 FILE NAME: \\...

**SINGH**  
SINGH + ASSOCIATES INC.  
CONSULTING ENGINEERS

**SD-08**



**NOTES:**

1. USE BLACK LETTERING ON ORANGE BACKGROUND.
2. ERECT SIGNS IN ADVANCE OF THE LOCATION FOR THE "ROAD CONSTRUCTION AHEAD" SIGN AT LOCATIONS AS DIRECTED BY THE ENGINEER.
3. ERECT SIGN ① WITH INSTALLED PANEL ② ONE WEEK PRIOR TO THE START OF CONSTRUCTION.
4. REMOVE PANEL ② SOON AFTER THE START OF CONSTRUCTION.
5. SEE SPECIAL PROVISION FOR "TEMPORARY INFORMATION SIGNING" FOR ADDITIONAL INFORMATION.
6. ONE SIGN ASSEMBLY EQUALS 25.70 SQ. FT. (2.3 SQ. M.)
7. SHALL BE PAID FOR AS TEMPORARY INFORMATION SIGNING.

ALL DIMENSIONS ARE IN INCHES (MILLIMETERS) UNLESS OTHERWISE SHOWN.

USER NAME = footernj	DESIGNED -	REVISED - R. MIRS 09-15-97	<b>STATE OF ILLINOIS DEPARTMENT OF TRANSPORTATION</b>	<b>ARTERIAL ROAD INFORMATION SIGN</b>		F.A. RTE.	SECTION	COUNTY	TOTAL SHEETS	SHEET NO.	
PLOT SCALE = 50.0000' / in.	DRAWN -	REVISED - R. MIRS 12-11-97		SCALE: NONE		SHEET 1 OF 1 SHEETS		STA. TO STA.		TC-22 CONTRACT NO.	
PLOT DATE = 3/4/2019	CHECKED -	REVISED - T. RAMMACHER 02-02-99		ILLINOIS		FED. AID PROJECT		CONTRACT NO.		CONTRACT NO.	
	DATE -	REVISED - C. JUCIUS 01-31-07		ILLINOIS		FED. AID PROJECT		CONTRACT NO.		CONTRACT NO.	

<b>SINGH</b> SINGH + ASSOCIATES INC. CONSULTING ENGINEERS	USER NAME = vturnez	DESIGNED - HP	REVISED -	<b>STATE OF ILLINOIS DEPARTMENT OF TRANSPORTATION</b>	<b>IDOT D1-TRAFFIC CONTROL STANDARDS</b>		F.A.P. RTE.	SECTION	COUNTY	TOTAL SHEETS	SHEET NO.	
	PLOT SCALE = 2' / in.	DRAWN - HP	REVISED -		SCALE:		SHEET OF SHEETS		STA. TO STA.		ILLINOIS FED. AID PROJECT	
	PLOT DATE = 8/13/2021	CHECKED - RP/MG	REVISED -		ILLINOIS		FED. AID PROJECT		CONTRACT NO.		CONTRACT NO.	
		DATE - 08/12/2021	REVISED -		ILLINOIS		FED. AID PROJECT		CONTRACT NO.		CONTRACT NO.	

**SD-09**

MODEL: P:\default... FILE NAME: V:\1011\p\c\cs\148601\Task-Order\_13162\M9304\_CADD\CADD-Sheets\ID162\M93-ink-stanord-09.dgn

FILE NAME: B:\11\08\EB\INTEG\Illindogp-RWD01\Documents\IDOT\_offices\Bldgctc\_1\Projects\Bldgctc22\31\CADDData\Cabnet\std2.dgn