

STATE OF ILLINOIS
DEPARTMENT OF TRANSPORTATION

F.A.I. RTE.	SECTION	COUNTY	TOTAL SHEETS	SHEET NO.
I-80	D2 BC 2022-1	ROCK ISLAND	4	1
		ILLINOIS	CONTRACT NO. 64P97	

INDEX OF SHEETS

1. COVER SHEET, INDEX OF SHEETS, STATE STANDARDS
2. SUMMARY OF QUANTITIES
3. SCHEDULE OF QUANTITIES
4. LOCATION MAP ROCK ISLAND COUNTY

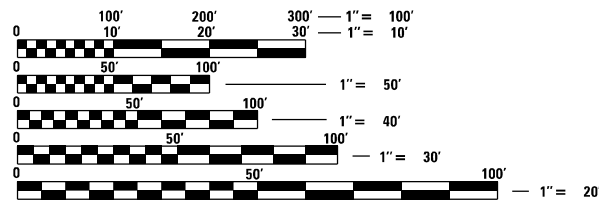
PROPOSED
HIGHWAY PLANS

F.A.I. 80 (I-80)
SECTION: D2 BC 2022-1
PROJECT: NHPP-KXC0(373)
TYPE of IMPROVEMENT: BRIDGE WASHING
ROCK ISLAND COUNTY

C-92-060-21

STATE STANDARDS

- 701101-05 OFF-ROAD OPERATIONS, MULTILANE, 15'(4.5m) TO 24'(600mm) FROM PAVEMENT EDGE
- 701400-10 APPROACH TO LANE CLOSURE, FREEWAY/EXPRESSWAY
- 701406-12 LANE CLOSURE, FREEWAY/EXPRESSWAY, DAY OPERATIONS ONLY
- 701411-09 LANE CLOSURE, MULTILANE, AT ENTRANCE OR EXIT RAMP FOR SPEEDS ≥ 45 MPH
- 701901-08 TRAFFIC CONTROL DEVICES
- 720011-01 METAL POSTS FOR SIGNS, MARKERS AND DELINEATORS
- 728001-01 TELESCOPING STEEL SIGN SUPPORT
- 729001-01 APPLICATIONS OF TYPES A & B METAL POSTS (FOR SIGNS & MARKERS)

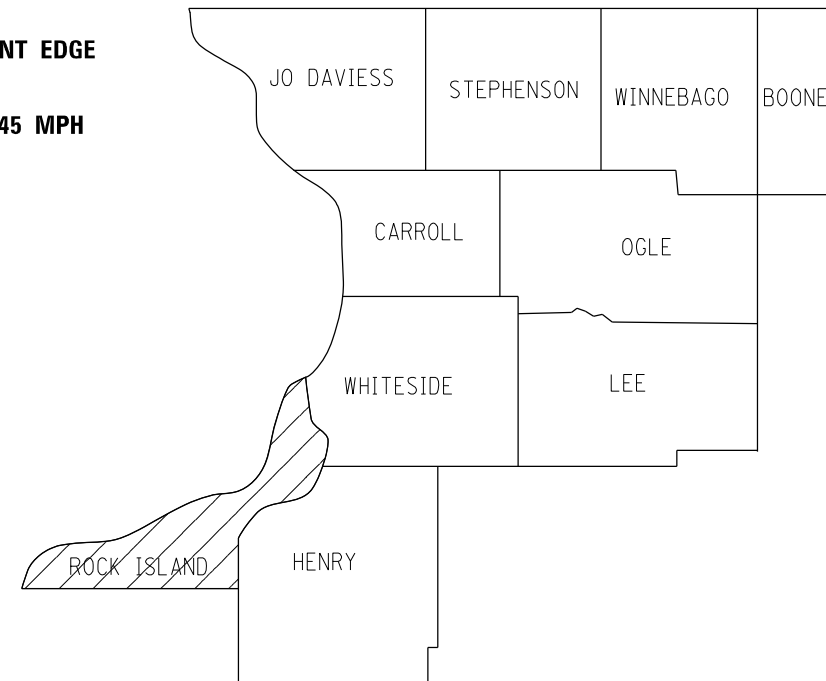


FULL SIZE PLANS HAVE BEEN PREPARED USING STANDARD ENGINEERING SCALES, REDUCED SIZED PLANS WILL NOT CONFORM TO STANDARD SCALES. IN MAKING MEASUREMENTS ON REDUCED PLANS, THE ABOVE SCALES MAY BE USED.

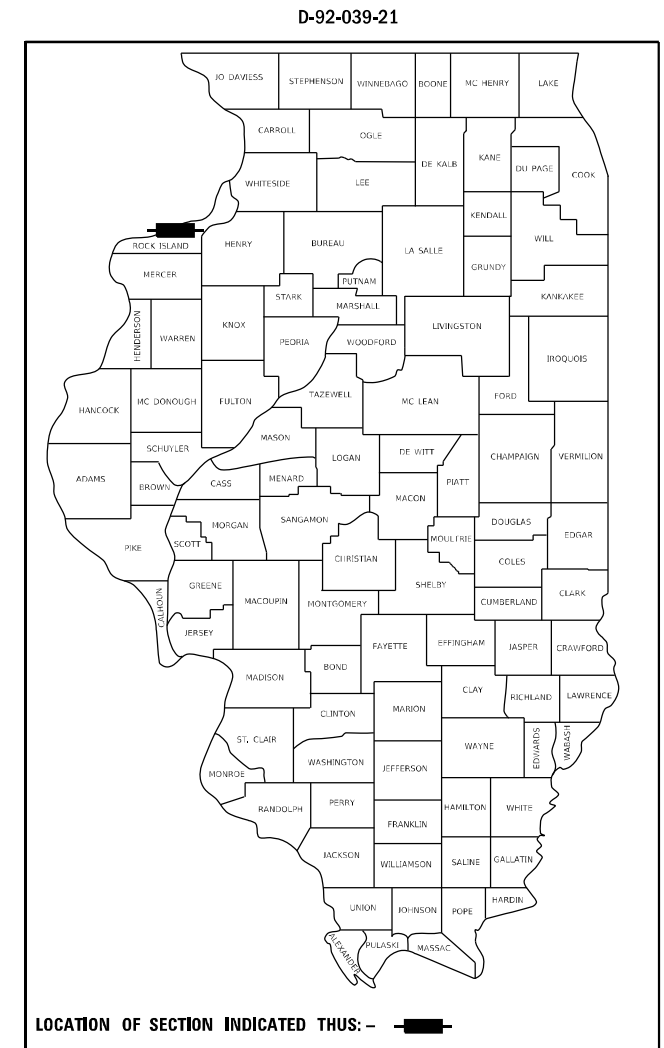
J.U.L.I.E.
JOINT UTILITY LOCATION INFORMATION FOR EXCAVATION
1-800-892-0123
OR 811

PROJECT ENGINEER: DAVID DOSS (815) 284-5416
PROJECT MANAGER: MAHMOUD ETEMADI (815) 284-5393

CONTRACT NO. 64P97



LOCATION OF SECTION INDICATED THIS: - [hatched box]



LOCATION OF SECTION INDICATED THIS: - [black box]

STATE OF ILLINOIS
DEPARTMENT OF TRANSPORTATION

SUBMITTED July 29, 20 21
David Doss
REGIONAL ENGINEER

October 1, 20 21
Stephen M. Smith
ENGINEER OF DESIGN AND ENVIRONMENT

October 1, 20 21
Stephen M. Smith
DIRECTOR OF HIGHWAYS PROJECT IMPLEMENTATION

PRINTED BY THE AUTHORITY
OF THE STATE OF ILLINOIS

SCHEDULE OF QUANTITIES

Pay Item Spring 2021	SN	Feature Crossed	Facility Carried	Bridge Location	Traffic Control
BRIDGE WASHING NO. 1	081-0011	Mississippi River	FAI 80 (I-80)	Near LeClaire Iowa	701400, 701406, 701411
Pay Item Fall 2021	SN	Feature Crossed	Facility Carried	Bridge Location	
BRIDGE WASHING NO. 2	081-0011	Mississippi River	FAI 80 (I-80)	Near LeClaire Iowa	701400, 701406, 701411
					701400 & 701406

MODEL: Default
 FILE NAME: \\pwwd01\pwwd01\Documents\DOT_Offices\District 2\Projects\Operations\Bridges_Section\Bridges_Washing_Contract\2022_64P97_Bridge_Washing_Over_Mississippi_River_L1\CAD\DWG\197-sh-covers.dwg

USER NAME = dssdd	DESIGNED - _____	REVISED - _____
	DRAWN - _____	REVISED - _____
PLOT SCALE = 40,0000 * / in.	CHECKED - _____	REVISED - _____
PLOT DATE = Jul-22-2021 09:10:03 AM	DATE - _____	REVISED - _____

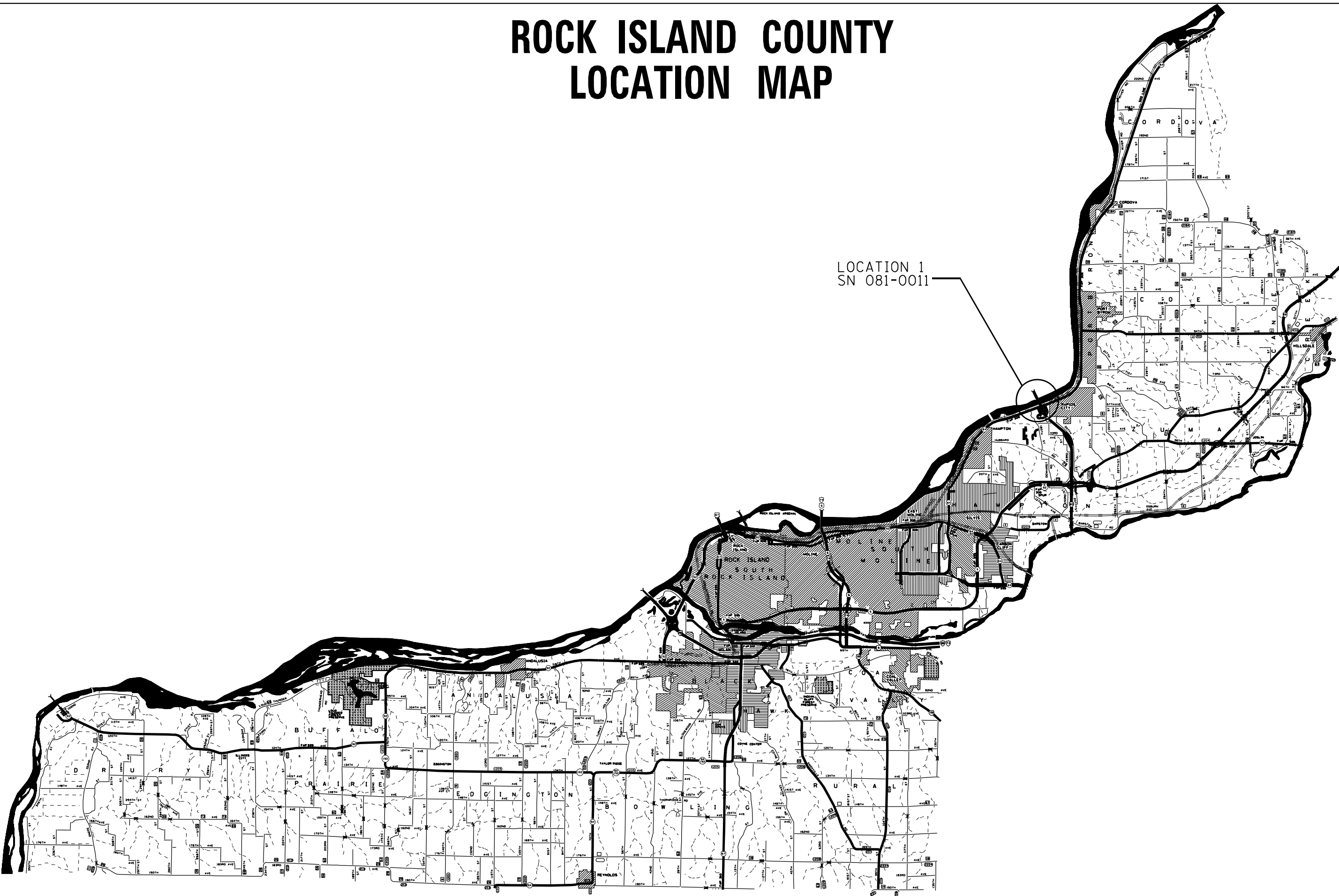
**STATE OF ILLINOIS
DEPARTMENT OF TRANSPORTATION**

SCHEDULE OF QUANTITIES

SCALE: _____ SHEET ___ OF ___ SHEETS STA. _____ TO STA. _____

F.A.I. RTE.	SECTION	COUNTY	TOTAL SHEETS	SHEET NO.
I-80	D2 BC 2022-1	ROCK ISLAND	4	3
CONTRACT NO. 64P97				
ILLINOIS FED. AID PROJECT				

ROCK ISLAND COUNTY LOCATION MAP



LOCATION 1
SN 081-0011

MODEL: C:\default
 FILE NAME: p:\m\baronm\dot\illinois\pww\DOT\Documents\DOT_Offices\District 2\Projects\Operations\Bridges_Section\Bridges_Washing_Contract\2022\64P97_Bridge_Washing\over_Mississippi_River_L1\CAD\081-0011-2ht-cover.dwg

USER NAME = drossd	DESIGNED - _____	REVISED - _____
PLOT SCALE = 40,0000 * / in.	DRAWN - _____	REVISED - _____
PLOT DATE = Jul-22-2021 09:10:12 AM	CHECKED - _____	REVISED - _____
	DATE - _____	REVISED - _____

STATE OF ILLINOIS
DEPARTMENT OF TRANSPORTATION

ROCK ISLAND COUNTY LOCATION MAP	
SCALE: _____	SHEET _____ OF _____ SHEETS STA. _____ TO STA. _____

F.A.I. RTE.	SECTION	COUNTY	TOTAL SHEETS	SHEET NO.
I-80	D2 BC 2022-1	ROCK ISLAND	4	4
CONTRACT NO. 64P97				
ILLINOIS FED. AID PROJECT				