

STATE OF ILLINOIS
DEPARTMENT OF TRANSPORTATION

F.A.I. RTE.	SECTION	COUNTY	TOTAL SHEETS	SHEET NO.
57/70	D7 BRIDGE PAINTING 2022-1	VARIOUS	10	1
		ILLINOIS	CONTRACT NO. 74A66	

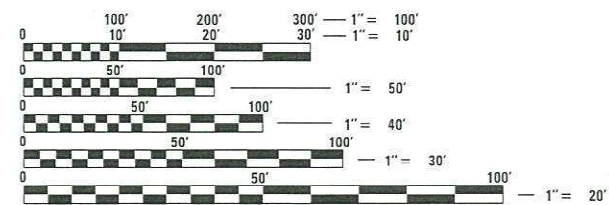
FOR INDEX OF SHEETS, SEE SHEET NO. 2

ADT: I-57 19,800 (2019)
I-70 23,700 (2019)

PROPOSED HIGHWAY PLANS

F.A.I ROUTE 57/70 (I-57/I-70)
SECTION D7 BRIDGE PAINTING 2022-1
PROJECT NHPP-4RL5(285)
BRIDGE PAINTING
VARIOUS COUNTIES

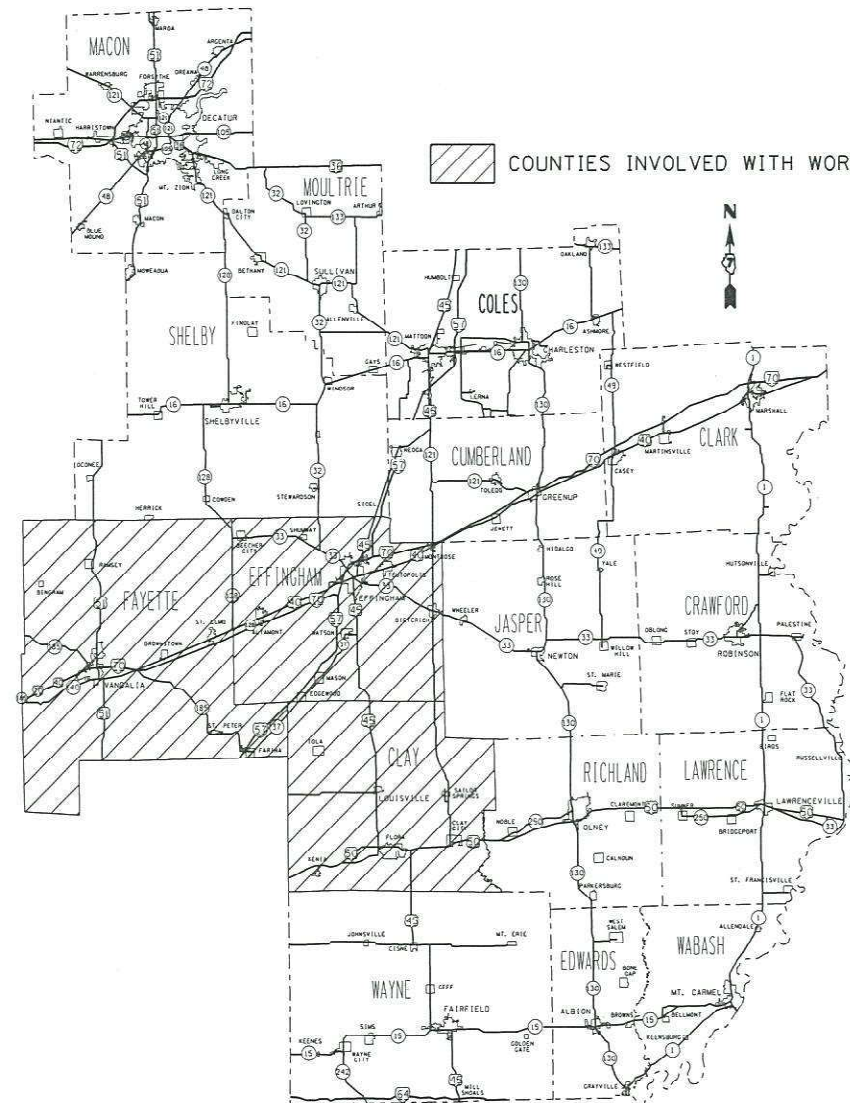
C-97-166-21



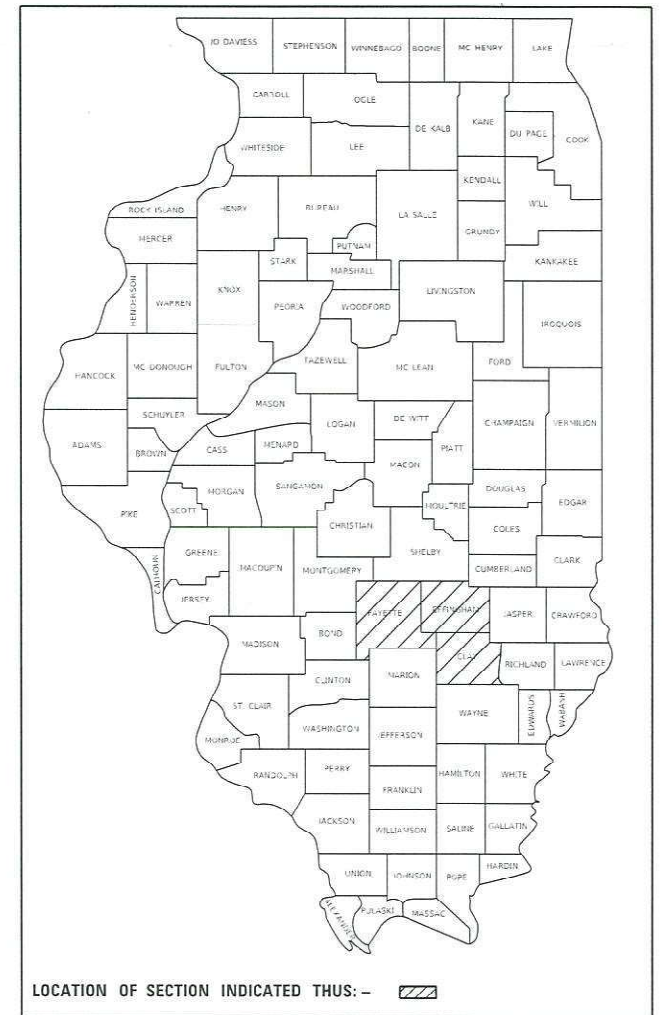
FULL SIZE PLANS HAVE BEEN PREPARED USING STANDARD ENGINEERING SCALES. REDUCED SIZED PLANS WILL NOT CONFORM TO STANDARD SCALES. IN MAKING MEASUREMENTS ON REDUCED PLANS, THE ABOVE SCALES MAY BE USED.

J.U.L.I.E.
JOINT UTILITY LOCATION INFORMATION FOR EXCAVATORS
1-800-892-0123
OR 811

PROJECT ENGINEER: TOM RONAN
PROJECT MANAGER: TOM RONAN
PHONE NUMBER: (217)-342-8320
CONTRACT NO. 74A66



D-97-097-21



STATE OF ILLINOIS
DEPARTMENT OF TRANSPORTATION

SUBMITTED August 16 2021
Jeffrey P. Myrberg
REGIONAL ENGINEER

October 1 2021
[Signature]
ENGINEER OF DESIGN AND ENVIRONMENT

October 21 2021
Stephen M. Smith
DIRECTOR OF HIGHWAYS PROJECT IMPLEMENTATION

PRINTED BY THE AUTHORITY
OF THE STATE OF ILLINOIS

SUMMARY OF QUANTITIES			TOTAL QUANTITIES URBAN	CONSTRUCTION TYPE CODE		
CODE NO	ITEM	UNIT		0047 CLAY 90% FED 10% STATE	0047 EFFINGHAM 90% FED 10% STATE	0047 FAYETTE 90% FED 10% STATE
67100100	MOBILIZATION	L SUM	1	0.33	0.33	0.34
70100207	TRAFFIC CONTROL AND PROTECTION, STANDARD	EACH	6	2	2	2
	701402					
70100420	TRAFFIC CONTROL AND PROTECTION, STANDARD	EACH	2			2
	701411					
70100800	TRAFFIC CONTROL AND PROTECTION, STANDARD	L SUM	1	0.33	0.33	0.34
	701401					
70400100	TEMPORARY CONCRETE BARRIER	FOOT	1200	400	400	400
70400200	RELOCATE TEMPORARY CONCRETE BARRIER	FOOT	3600	1200	1200	1200
70600250	IMPACT ATTENUATORS, TEMPORARY (NON-REDIRECTIVE), TEST LEVEL 3	EACH	3	1	1	1
70600350	IMPACT ATTENUATORS, RELOCATE (NON-REDIRECTIVE), TEST LEVEL 3	EACH	9	3	3	3
X7040125	PINNING TEMPORARY CONCRETE BARRIER	EACH	720	240	240	240
Z0007101	CONTAINMENT AND DISPOSAL OF LEAD PAINT	L SUM	1	1		
	CLEANING RESIDUES NO. 1					

SUMMARY OF QUANTITIES			TOTAL QUANTITIES URBAN	CONSTRUCTION TYPE CODE		
CODE NO	ITEM	UNIT		0047 CLAY 90% FED 10% STATE	0047 EFFINGHAM 90% FED 10% STATE	0047 FAYETTE 90% FED 10% STATE
Z0007102	CONTAINMENT AND DISPOSAL OF LEAD PAINT	L SUM	1		1	
	CLEANING RESIDUES NO. 2					
Z0007103	CONTAINMENT AND DISPOSAL OF LEAD PAINT	L SUM	1			1
	CLEANING RESIDUES NO. 3					
Z0010501	CLEANING AND PAINTING STEEL BRIDGE NO. 1	L SUM	1	1		
Z0010502	CLEANING AND PAINTING STEEL BRIDGE NO. 2	L SUM	1		1	
Z0010503	CLEANING AND PAINTING STEEL BRIDGE NO. 3	L SUM	1			1

MODEL: Default
 FILE: M:\a666\paw\project-paw\benefit.com\PI\DOT\Documents\DOT Office\District: 7\Projects\74A66\CADD\Sheet\DOT\74A66-1b-S00.dgn

USER NAME = steffemk	DESIGNED -	REVISED -
	DRAWN -	REVISED -
PLOT SCALE = 100.0000' / in.	CHECKED -	REVISED -
PLOT DATE = 8/17/2021	DATE -	REVISED -

STATE OF ILLINOIS
DEPARTMENT OF TRANSPORTATION

SUMMARY OF QUANTITIES

SCALE: SHEET 1 OF 1 SHEETS STA. TO STA.

F.A.I. RTE.	SECTION	COUNTY	TOTAL SHEETS	SHEET NO.
57/70	D7 BRIDGE PAINTING 2022-1	VARIOUS	10	3
ILLINOIS FED. AID PROJECT			CONTRACT NO. 74A66	

REV-SEP

B.M.: Spike & washer in power pole approximately 110' L.H. Sta. 4206+27 (F.A.I.R.T. 57) Elev. 571.69

STATE OF ILLINOIS
DEPARTMENT OF PUBLIC WORKS & BUILDINGS
DIVISION OF HIGHWAYS

DATE	BY	CHKD	DATE	SHEET NO.
11/27/21	CLAY	15	6	10 SHEETS

GENERAL NOTES

FIELD WELDING OF CONNECTIONS ACCESSORIES TO THE BOTTOM FLANGES OR FOR A DISTANCE OF 1' OF THE SPAN EACH WAY FROM FIELD CONNECTIONS ON THE TOP FLANGES OF BEAMS OR GIRDERS WILL NOT BE PERMITTED. FIELD WELDING IN OTHER AREAS WILL BE PERMITTED ONLY WHEN APPROVED BY THE ENGINEER.

Coarse aggregate to be used in parapet handrails and end post must be free of chert, flint, limonite, lignite and soft sandstone.

The concrete floor slab shall be finished in accordance with Art. 519 of the Standard Specifications.

Slope Wall shall be reinforced with twisted wire fabric 6"x6" mesh, weighing 58# per 100 Sq. Ft.

All reinforcement bars shall be lapped 20 diameters unless otherwise shown.

All structural steel shall conform to ASTM Designation A-36, Rivers 1/2", Open Holes 1/2", unless otherwise noted.

Anchor bolts shall be set before fastening diaphragms over supports.

Exposed surfaces of the expansion devices, inaccessible after erection, shall receive two shop coats of red lead paint. All other surfaces shall be given one shop coat of red lead paint. Anchor and shear studs shall not be painted.

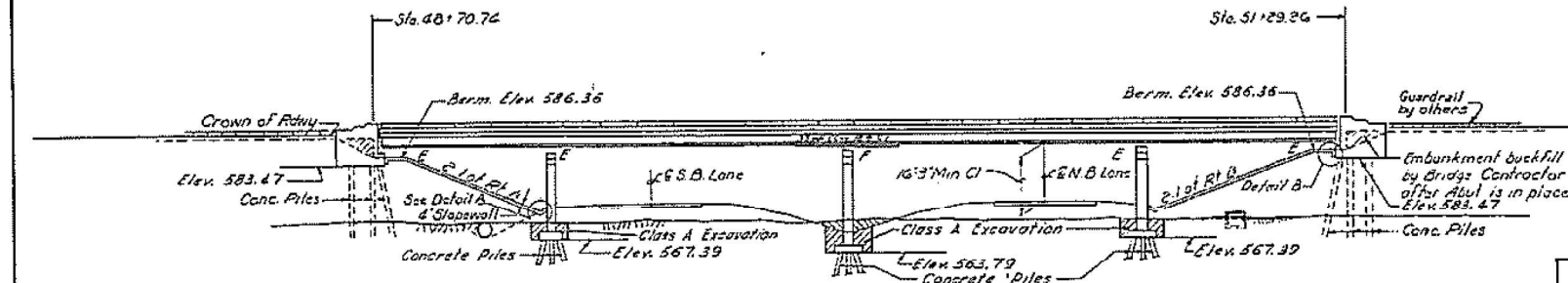
Expansion devices are included in the quantity of structural steel. Est. weight = 900 Lbs.

Except as otherwise provided, all structural steel shall receive one shop coat of red lead paint and two field coats of paint. See Special Provisions for field paint.

Concrete piles at abutments shall be driven in holes prepared thru the embankment in accordance with Article 50.9 (c) of the Standard Specifications.

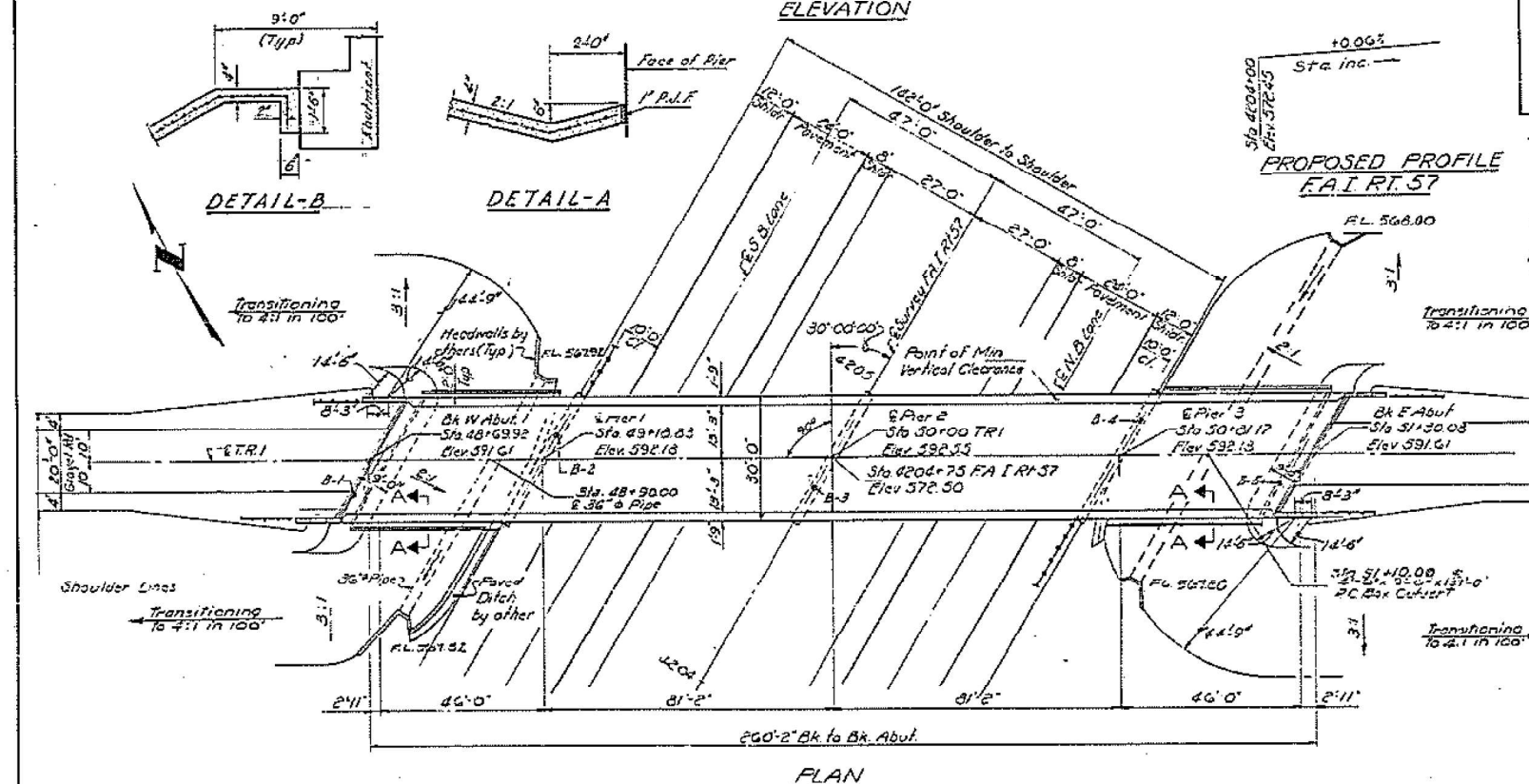
The Contractor shall drive two conc. test piles, both in permanent locations, one at the West Abut. and one at pier 2, as directed by the Engineer before ordering the remainder of piles.

Permanent forms will not be permitted in forming concrete. At least one set of forms shall be placed in the field after the steel has been erected and the deck forms are in place.



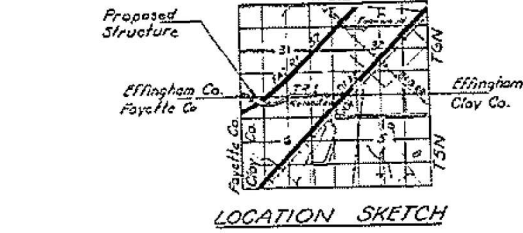
STATION 4204+75
BUILT 196 BY
STATE OF ILLINOIS
F.A.I.R.T. 57 SEC. 13.25-6HB-1
F.A. PROJ. I-18-57-3(35)
LOADING HS15

NAME PLATE
(See Std. 2113-1)



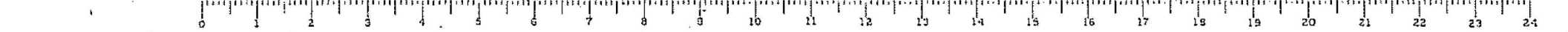
TOTAL BILL OF MATERIAL

ITEM	UNIT	SUPER	SUB	TOTAL
Class A Excav for Struct	Cu Yds.			100
Class X Concrete	Cu Yds.	230.1	216.6	446.7
Structural Steel	Lbs.	127,520		127,520
Aluminum Guardrail	Lin. Ft.	515		515
Reinforcement Bars	Lbs.	51,260	18,430	69,690
Protective Coat	Sq. Yds.	980		980
Concrete Piles	Lin. Ft.		1578	1578
Test Piles (Concrete)	Eq.		2	2
Name Plates	Eq.		2	2
Slope Wall (4')	Sq. Yds.			395



GENERAL PLAN & ELEVATION
PROJ. I-18-57-3(35)144
TR. 1 OVER F.A.I.R.T. 57
F.A.I.R.T. 57 SEC. 13.25-6HB-1
CLAY COUNTY
STATION 4204+75

Rev. 9-27-67 E.R.M. 2'-0" Curb changed to 9" safety curb, Class X Concrete changed from 4226 cu yds to 445.7 cu yds, deleted Barron Excavation, Reinforcement Bars changed from 62,260 lbs to 69,690 lbs, Protective Coat changed from 1010 sq yds. to 980 sq yds. deleted Pipe Culvert, Slope Wall changed from 370 sq yds. to 395 sq yds. Structural Steel changed from 127,400 lbs to 127,520 lbs. Revised and issued 11/27/21

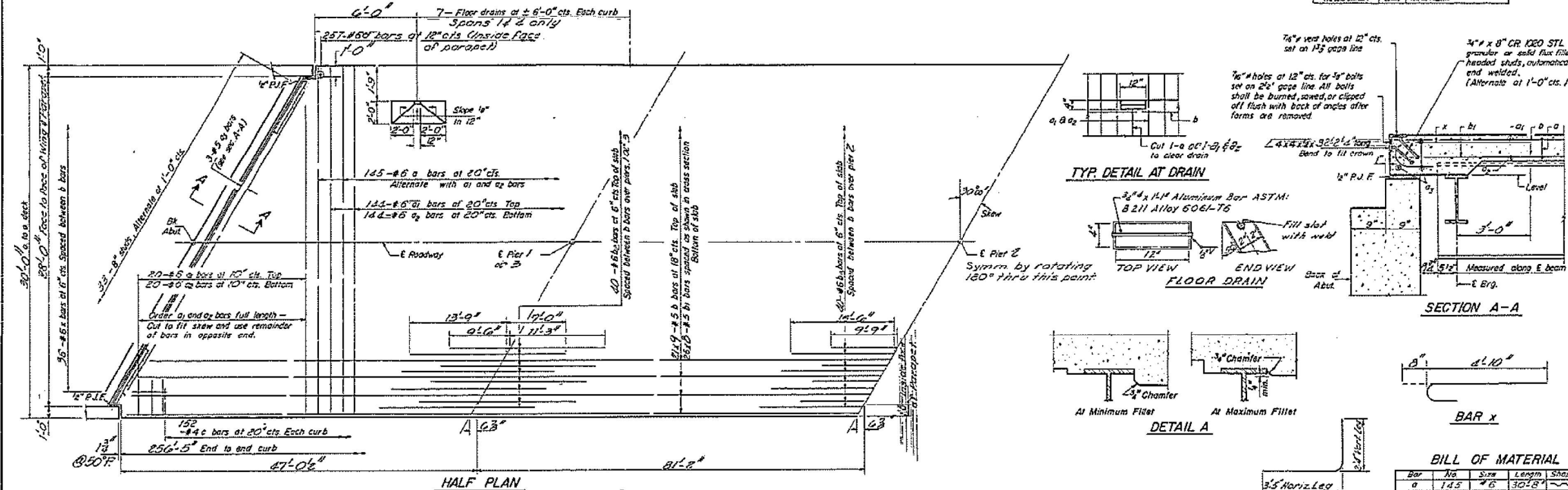


USER NAME = steffemk	DESIGNED -	REVISED -	STATE OF ILLINOIS DEPARTMENT OF TRANSPORTATION	EXISTING STRUCTURE PLANS SN 013-0027	F.A.I. R.T. SECTION COUNTY TOTAL SHEETS SHEET NO.
PLOT SCALE = 100,000' / in.	DRAWN -	REVISED -			57/70 D7 BRIDGE PAINTING 2022-1 VARIOUS 10 4
PLOT DATE = 8/17/2021	CHECKED -	REVISED -			CONTRACT NO. 74A66
	DATE -	REVISED -			ILLINOIS FED. AID PROJECT

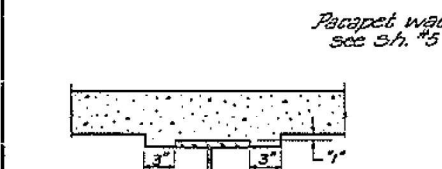
STATE OF ILLINOIS
DEPARTMENT OF PUBLIC WORKS & BUILDINGS
DIVISION OF HIGHWAYS

PROJECT NO.	DATE	PROJECT	SHEET NO.	TOTAL SHEETS
13-25-1	12-25-1	CLAY	21	8

SHEET NO. 3
10 SHEETS



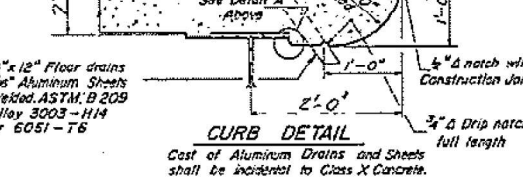
Note:
Bars indicated thus 20x3-#5 etc.
indicates 20 lines of bars with 3
lengths per line.
Min bar laps = 20 dia.



To determine "r". After all structural steel has been erected, elevations of the top flanges of the beams shall be taken at intervals shown on sheet 2. These elevations subtracted from the "Grade Elevations Adjusted for Dead Load Deflections" shown on sheet 2, minus slab thickness, equals the fillet heights "r" above top of beams.

DESIGNED	Nov 22 1965
CHECKED	
DRAWN	
APPROVED	

I-5-L (>15°) 10-10-62 Rev. 11-1-63 Rev. 5-1-64
Rev. 3-27-67 L.R.M. Changed 2'-0" curbs to 3" Safety Curbs, Class X Conc. changed from 224.1 Cu Yds to 181.9 Cu Yds. Structural Steel changed from 17,500 Lbs to 15,350 Lbs. Rein. Bars changed from 32,600 Lbs. to 24,390 Lbs.



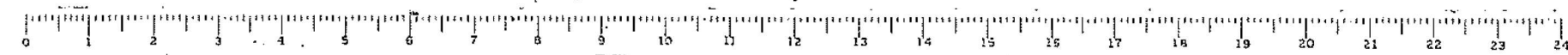
BILL OF MATERIAL

Bar	No	Size	Length	Shape
a	145	#6	3018"	
a1	154	#6	6918"	
a2	164	#5	28'0"	
a3	6	#5	32'0"	
b	189	#5	2919"	
b1	208	#5	33'0"	
b2	20	#6	20'9"	
b3	40	#6	25'3"	
c	304	#4	5'5"	
d	514	#6	5'3"	
e	72	#6	8'6"	

Reinforcement Bars Lbs. 44,390
Structural Steel Lbs. 18,530
Class X Concrete Cu. Yd. 181.9

* Weight of bearing assemblies with head plates, and anchor bolts are included as structural steel
Est. Wt = 6,870 Lbs.

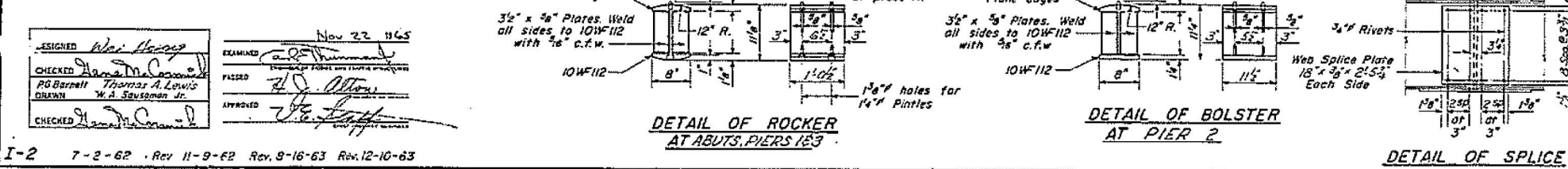
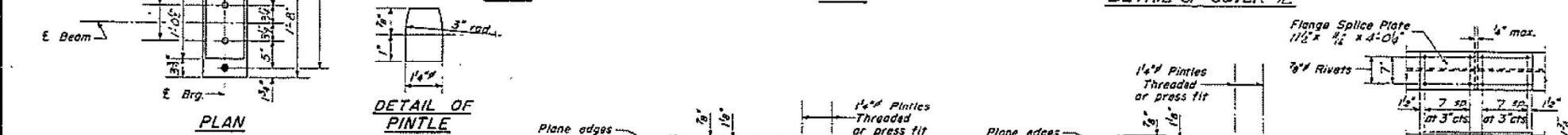
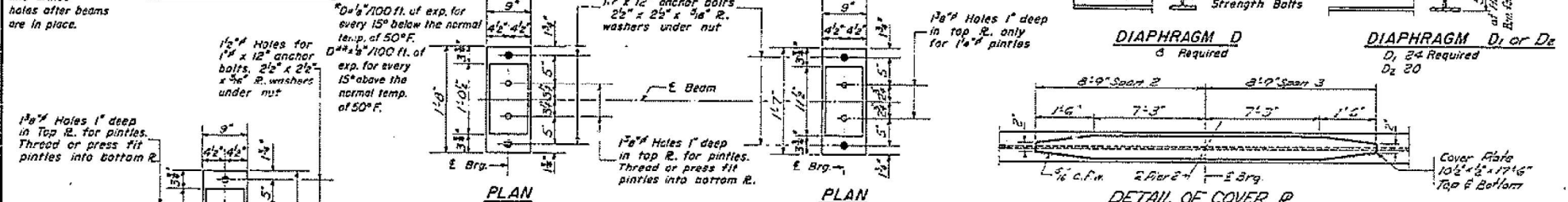
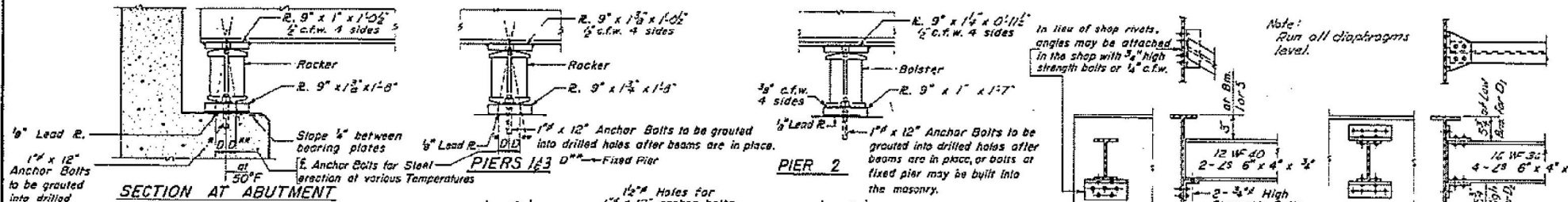
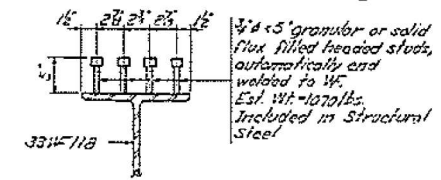
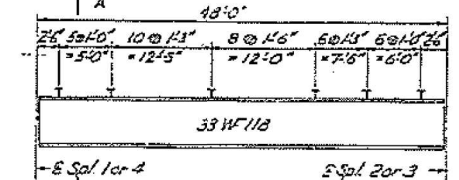
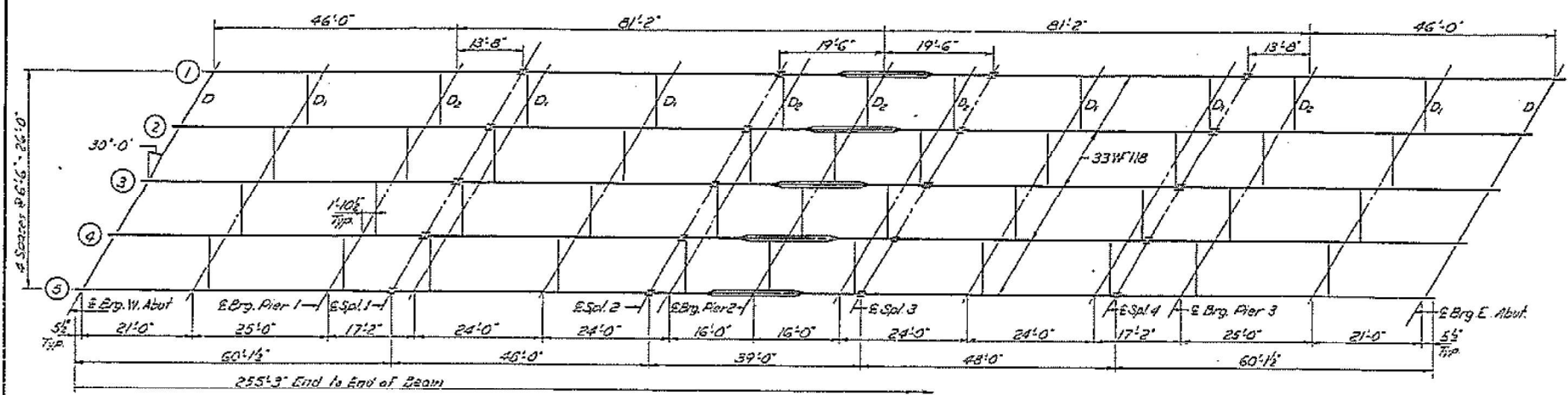
SUPERSTRUCTURE
F.A.I. RT. 57 SEC. 13, 25-64B-1
CLAY COUNTY
STATION 4204+75



USER NAME = steffemk	DESIGNED -	REVISED -	STATE OF ILLINOIS DEPARTMENT OF TRANSPORTATION	EXISTING STRUCTURE PLANS SN 013-0027	F.A.I. RTE.	SECTION	COUNTY	TOTAL SHEETS	SHEET NO.
PLOT SCALE = 100,000' / in.	DRAWN -	REVISED -			57/70	D7 BRIDGE PAINTING 2022-1	VARIOUS	10	5
PLOT DATE = 8/17/2021	CHECKED -	REVISED -			CONTRACT NO. 74A66				
	DATE -	REVISED -			ILLINOIS FED. AID PROJECT				

STATE OF ILLINOIS
DEPARTMENT OF PUBLIC WORKS & BUILDINGS
DIVISION OF HIGHWAYS

PROJECT NO. 57-1325
CLAY
21
9
SHEET NO. 4
10 SHEETS



ELEVATION TOP OF W

	Bms. 15	Bms. 24	Bms. 3
E Brg. W. Abut	590.85	591.00	591.09
E Brg. Pier 1	591.33	591.48	591.57
E Splice 1	591.47	591.62	591.71
E Splice 2	591.71	591.86	591.95
E Brg. Pier 2	591.71	591.86	591.95
E Splice 3	591.71	591.86	591.95
E Splice 4	591.47	591.62	591.71
E Brg. Pier 3	591.33	591.48	591.57
E Brg. E. Abut	590.85	591.00	591.09

DESIGNED: *W. H. Hays*
CHECKED: *W. H. Hays*
PG Barrett, Thomas A. Lewis, Gilman, W. A. Sausman Jr.
I-2 7-2-62 Rev 11-9-62 Rev. 9-16-63 Rev. 12-10-63

STRUCTURAL STEEL
F.A.I.R. 57 SEC. 1325-GNB-1
CLAY COUNTY
STA. 4204 + 75

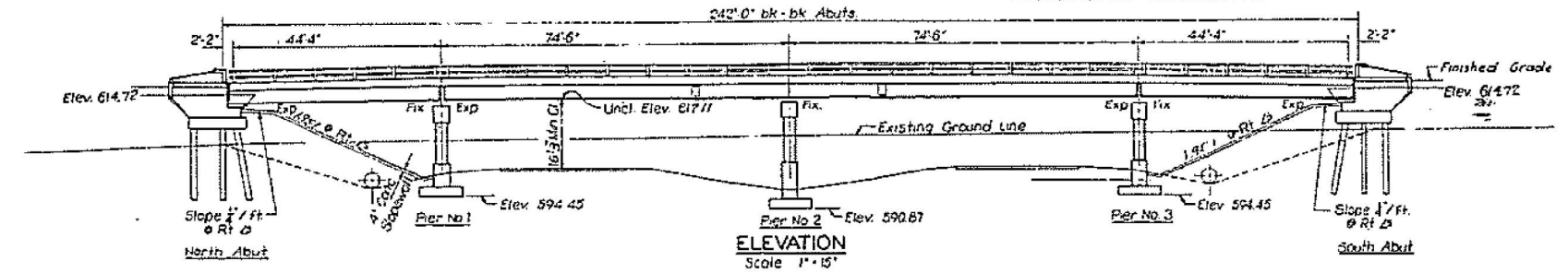


BM - Spike Power Pole E Side N.S. Road
397' Lt. & Sta 1742+46
Elev. 606.96

STATE OF ILLINOIS
DEPARTMENT OF PUBLIC WORKS & BUILDINGS
DIVISION OF HIGHWAYS

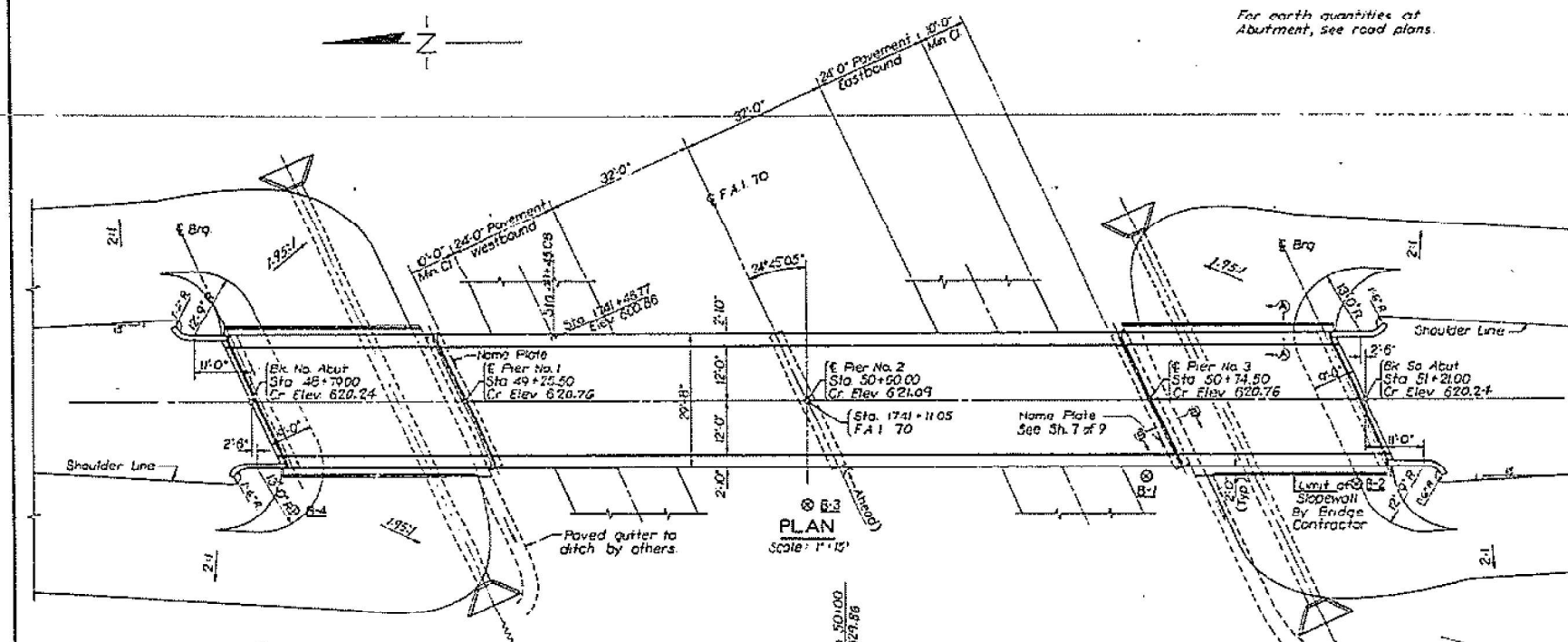
ROUTE NO.	SEC.	COUNTY	SECTION	SHEET NO.
F.A. 1	25-2HB-1	Effingham	CS	27
RT. 70	15.247			
FED. ROAD DIST. NO. 7	ILLINOIS PROJECT NO. 1-70-03(23)88			

SHEET 1 OF 9



GENERAL NOTES

Class X Concrete shall be used throughout except in handrail end posts.
Handrail Concrete shall be used in the handrail end posts.
The concrete floor slab shall be finished in accordance with Art. 31.19 of the Standard Specifications, and shall be poured in one continuous operation between construction joints.
Reinforcing Bars shall be furnished and set in accordance with Art. 31.15 of the Standard Specifications, unless noted.
Field connections riveted, unless noted.
All holes for splices shall be punched 1/16" and reamed to proper size (1 1/2" in web and 1 3/16" in flange) with all stringers assembled in the shop in proper position. Leave assembled in shop for inspection.
All rockers, rollers, bearing plates, fill plates, lead plates, pinches, and anchor bolts shall be fabricated and set in accordance with Art. 31.15 of the Standard Specifications, and are included in the quantity of Structural Steel.
All surfaces of the expansion devices inaccessible after erection shall receive two (2) shop coats of red lead paint except for the anchor studs. The anchor studs shall not be painted.
Except as otherwise provided, all Structural Steel shall receive one (1) shop coat of red lead paint and two (2) field coats of aluminum paint. See Art. 58.1 through 58.3 inclusive, of the Standard Specifications.
All paint shall be furnished and applied by the Contractor involved.
Embankments shall be constructed to elevation 613.56 in accordance with Sec. 16 of the Standard Specifications before the abutment piles are driven.
The Contractor shall drive one test pile in a permanent location as directed by the Engineer before ordering the remainder of the piles.
Concrete piles through embankment shall be driven in accordance with notes in accordance with Article 60.9(c) of the Standard Specifications.

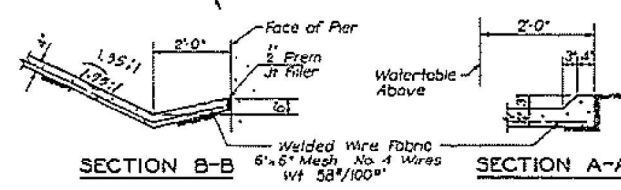
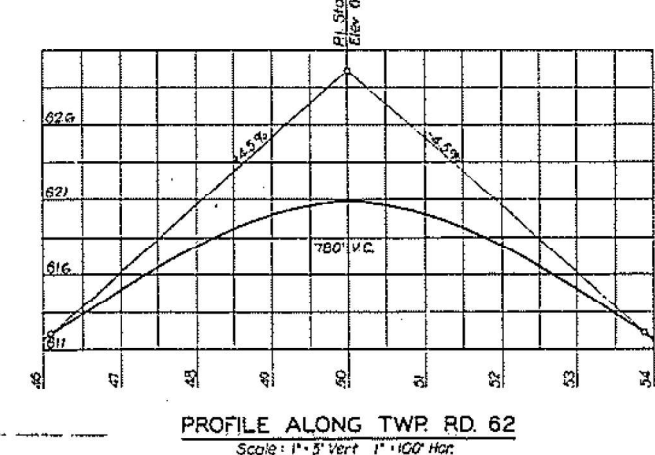
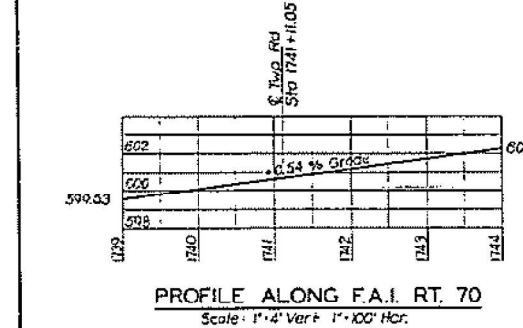


SECTION 25-2HB-1
TOTAL BILL OF MATERIAL

ITEM	QUANTITY	SUPER	SUB	TOTAL
Class X Concrete	Cu Yds	210.3	237.3	447.6
Handrail Concrete	Cu Yds	2.9	-	2.9
Reinforcement Bars	Lbs	34000	22790	56790
Erecting Structural Steel	Lbs	223260	-	223260
Furnishing & Erecting Metal Handrail	Lin Ft	470	-	470
Name Plates	Each	-	2	2
Concrete Piles	Lin Ft	-	374	374
Test Piles (Conv.)	Each	-	1	1
Shoewall	Sq Yds	-	-	340
Class A Excavation for Structures	Cu Yds	-	181	181

SECTION 25-2HF-1
TOTAL BILL OF MATERIAL

ITEM	QUANTITY	SUPER	SUB	TOTAL
Furnishing Structural Steel	Lbs	223260	-	223260



STATION 1741+11.05
BUILT 1952 BY
STATE OF ILLINOIS
F.A.I. RT. 70 SEC. 25-2HB-1
FA PROJ. 1-70-03(23)88
LOADING HIS-S12

DESIGN STRESSES

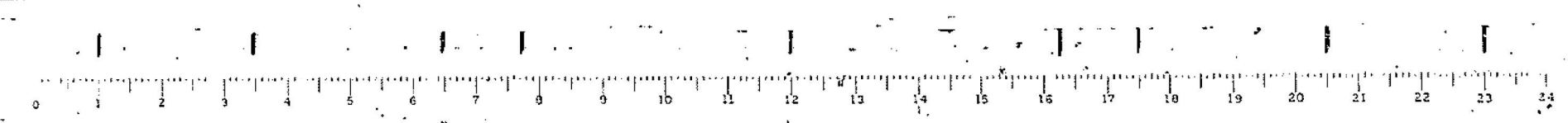
$f_c = 1400$ psi
 $f_s = 20000$ psi (Reinf)
 $f_s = 18000$ psi (Struct)
 $V = 75$ p.s.f. Pier Footing
 $n = 10$

ROCHESTER AND GOODALL ENGINEERS INCORPORATED SALEM, ILLINOIS
HANSON, COLLINS AND NICE CONSULTING ENGINEERS SPRINGFIELD, ILLINOIS

GENERAL PLAN & ELEVATION
TWP. RD. 62 OVER FED. AID INTERSTATE
F.A. PROJECT 1-70-03(23)88
F.A.I. ROUTE 70 SECTION 25-2HB-1
EFFINGHAM COUNTY
STATION 1741+11.05

DESIGNED	J.C.C.	EXAMINED	
CHECKED	R.L.P.	PAIRED	
DRAWN	D.D.O.	APPROVED	
CHECKED	V.F.S.		

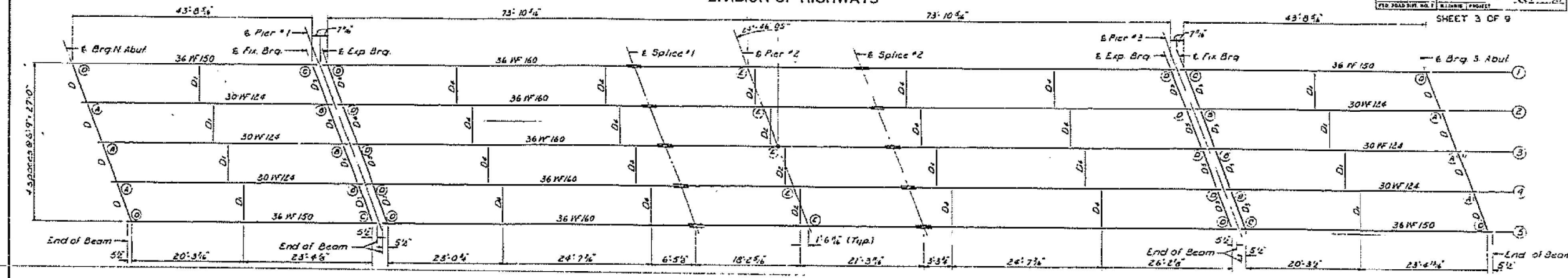
Revised 7-27-60. Class X Conc. Quantity R.R.D.
4-8-60 Elev.



STATE OF ILLINOIS
DEPARTMENT OF PUBLIC WORKS & BUILDINGS
DIVISION OF HIGHWAYS

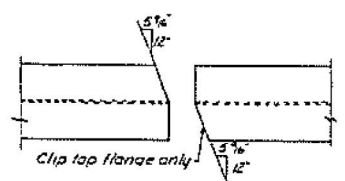
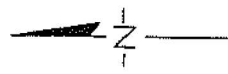
ROUTE NO.	SEC.	COUNTY	TOTAL SHEETS	SHEET NO.
F.A.I. 70	25-2HB-1	Effingham	65	20
FILE NO.	PROJECT			
74A66				

SHEET 3 OF 9



Note:
Encircled letters indicate bearing to be used See Sheet # of 9 for details of the bearings.

PLAN OF STRUCTURAL STEEL



FLANGE CLIPPING DETAIL
Piers #1 & 3 only

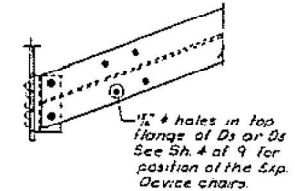
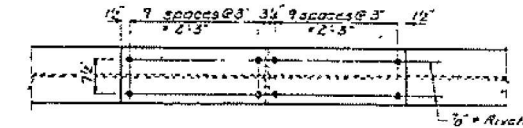


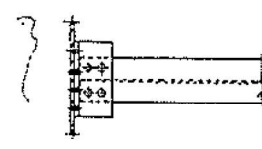
TABLE OF ELEVATIONS

PI.	Span No.	1	2	3	4	5
E Brq N. Abut.		619.10	619.61	619.67	619.69	619.23
E Fix Brq Pier #1		619.98	620.11	620.18	620.17	620.07
E Exp Brq Pier #1		619.98	620.12	620.19	620.18	620.07
E Splice #1		620.26	620.28	620.42	620.29	620.29
E Brq Pier #2		620.28	620.39	620.42	620.39	620.28
E Splice #2		620.27	620.37	620.42	620.28	620.28
E Exp Brq Pier #3		620.07	620.18	620.17	620.11	619.98
E Fix Brq Pier #3		620.07	620.17	620.17	620.11	619.98
E Brq S. Abut.		619.83	619.67	619.67	619.61	619.10

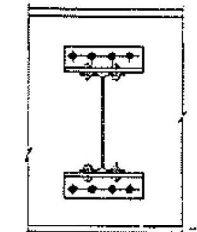
Note: All elevations shown are given at the top flanges of the beams



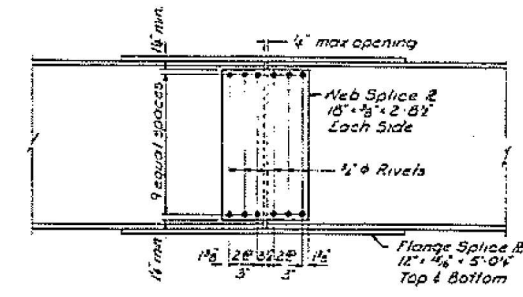
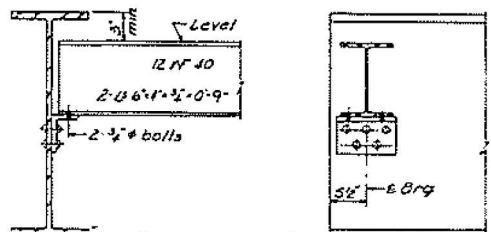
SPLICE DETAIL



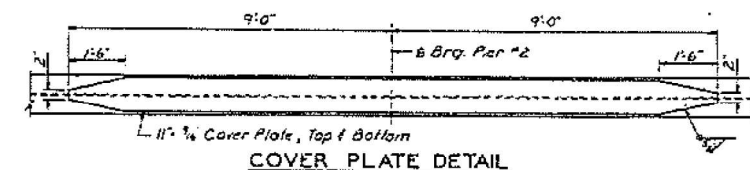
DIAPHRAGMS - D1, D2 & D4



DIAPHRAGMS D3 & D5



DESIGNED	goc	EXAMINED	
CHECKED	J.L.D.	FORWARDED	
DRAWN	D.J.M.	APPROVED	
CHECKED	V.P.S.		



COVER PLATE DETAIL

Revised 6-8-60 Elev. R.R.O.

Note: The Structural Steel for all cover plates and the W sections to which they are welded shall conform to the Specifications for Steel for Bridges and Buildings, A.S.T.M. Designation A-373. All other Structural Steel may conform to A-372. Designation A-7.

STRUCTURAL STEEL
TWP. RD. 62 OVER FED. AID INTERSTATE
F.A.I. ROUTE 70 SECTION 25-2HB-1
EFFINGHAM COUNTY
STATION 1741 + 11.05

USER NAME = steffemk	DESIGNED -	REVISED -
PLOT SCALE = 100,000' / in.	DRAWN -	REVISED -
PLOT DATE = 8/17/2021	CHECKED -	REVISED -
	DATE -	REVISED -

STATE OF ILLINOIS
DEPARTMENT OF TRANSPORTATION

EXISTING STRUCTURE PLANS
SN 025-0058

SCALE: SHEET 5 OF 7 SHEETS STA. TO STA.

F.A.I. RTE.	SECTION	COUNTY	TOTAL SHEETS	SHEET NO.
57/70	D7 BRIDGE PAINTING 2022-1	VARIOUS	10	8
CONTRACT NO. 74A66			ILLINOIS FED. AID PROJECT	

B.M. Checked on N.E. Corner of S.E. Wingwall of Bridge 10: Rt. of Sta. 35+30: Elev. 57.30

STATE OF ILLINOIS
DEPARTMENT OF PUBLIC WORKS & BUILDINGS
DIVISION OF HIGHWAYS

PROJECT NO.	SECTION	SHEET NO.	TOTAL SHEETS
57	FAYETTE	55	73

GENERAL NOTES

Coarse aggregate, to be used in parapet handrail and wing walls must be absolutely free of chert, flint, limestone, lignite and soft sandstone.

The concrete floor slab shall be finished in accordance with Article 5119 of the Standard Specifications.

Steps wall shall be reinforced with wels. 1 wire sub-6 x 6 mesh weighing 50 lbs per 100 sq ft.

All reinforcement bars shall be lapped 20 diameters unless otherwise shown.

Reinforcing bars shall be placed as shown in detail.

Anchor bolts shall be set before fastening diaphragms over supports.

The exposed surfaces of the expansion guards shall be given two shop coats of red lead paint. The contact surfaces shall be given one shop coat of red lead paint. Anchor studs shall not be painted.

Expansion guards are included in the quantity of Structural Steel Est. Wt. 2720 Lbs.

Paint to be applied to all structural steel shall receive one shop coat of red lead paint and two field coats of paint. See Special Provisions for field paint.

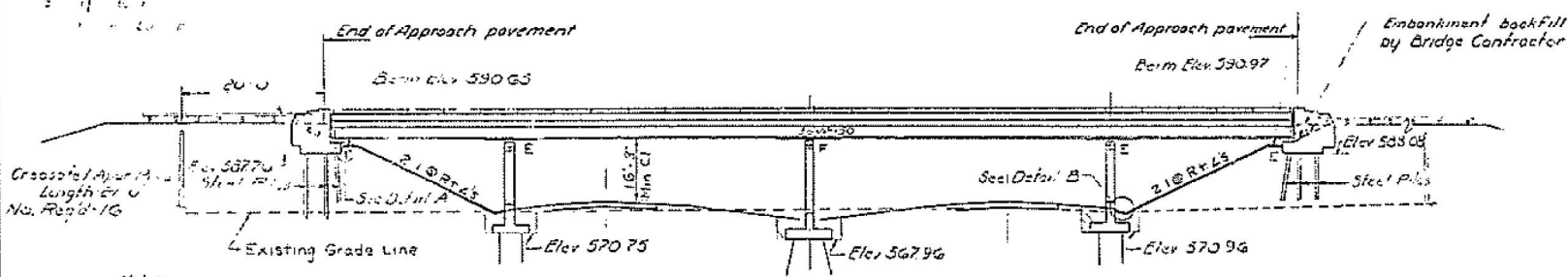
All structural steel shall conform to ASTM Designation A-36.

Permanent forms will not be permitted in forming the concrete floor.

The contractor shall drive one steel test pile of West alignment and use it in a permanent location, as directed by the Engineer before ordering the remainder of piles.

Excavation for portions of structures in the embankment shall not be classified.

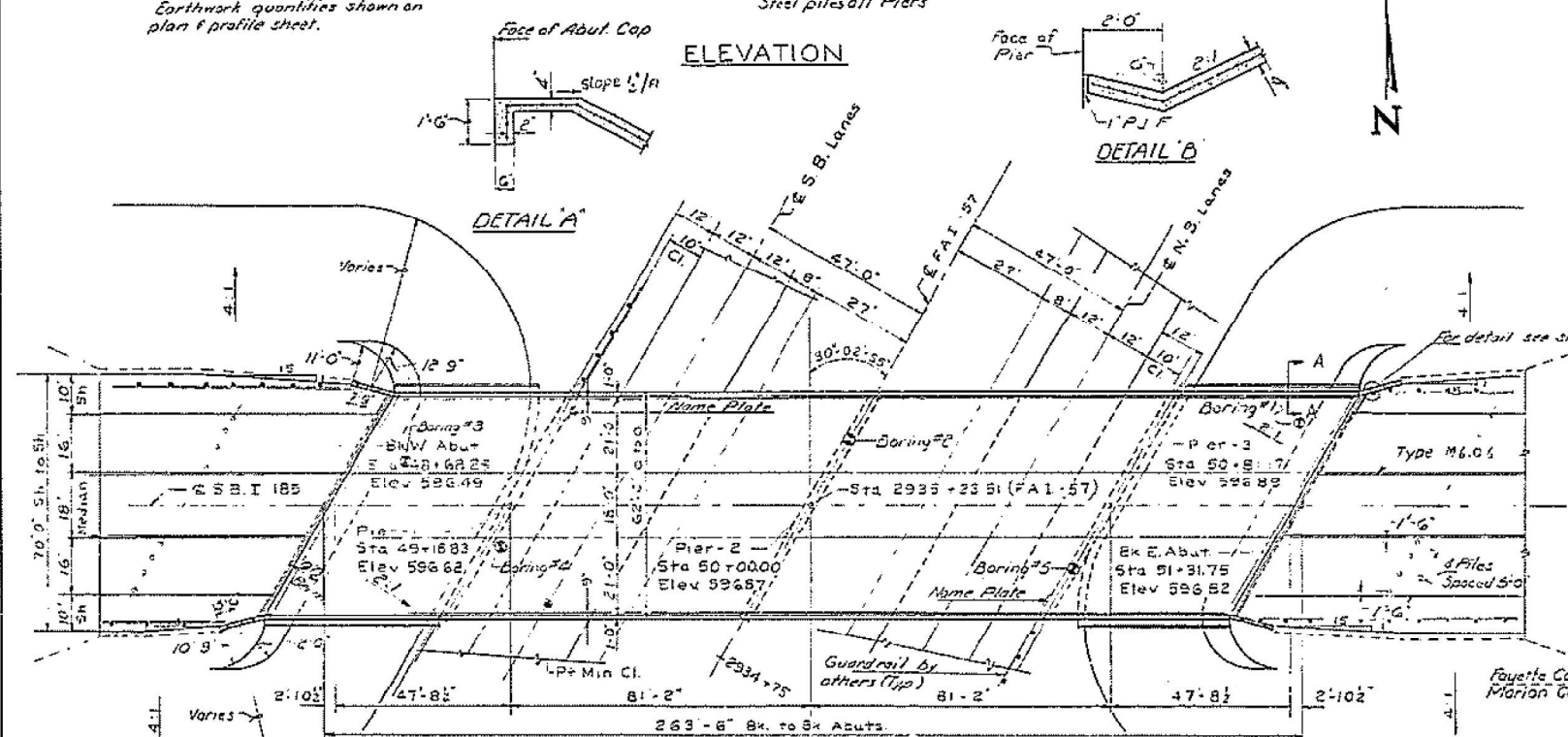
Field welding is prohibited. Necessary to the bridge hinges, or for a distance of 4' of the span each way from pier supports on the top flanges of beams or girders will not be permitted. Field welding in other areas will be permitted only when approved by the Engineer.



Note: Earthwork quantities shown on plan & profile sheet.

ELEVATION

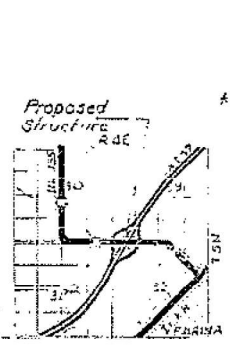
DETAIL B



STATION 2935+23.51
BUILT 196 BY
STATE OF ILLINOIS
FA.I.RT.57 SEC.26-1HB-1
FA PROJ. I-57-3(11)
LOADING HS20

NAME PLATE
See Std. 2113-1

LOCATION SKETCH



TOTAL BILL OF MATERIAL

Item	Unit	Super	Sub.	Total
Class A Excavation for Structures	Cu Yds		225	225
Class X Concrete	Cu Yds	49.74	2.1	51.84
Structural Steel	Lbs	3200	0	3200
Aluminum Handrail	Lin Ft	500		500
Reinforcement Bars	Lbs	10020	5060	15080
Steel Piles (COP36)	Lin Ft	2-28	3305	3533
Test Piles (Steel)	Each	2		2
Name Plates	Each		2	2
Crushed Piles	Lin Ft		2	2
Protective Coat	Sq Yds	953		953
Bridge Seal Sealant	Units/300		1	1
Steps Wall (2')	Sq Yds		760	760

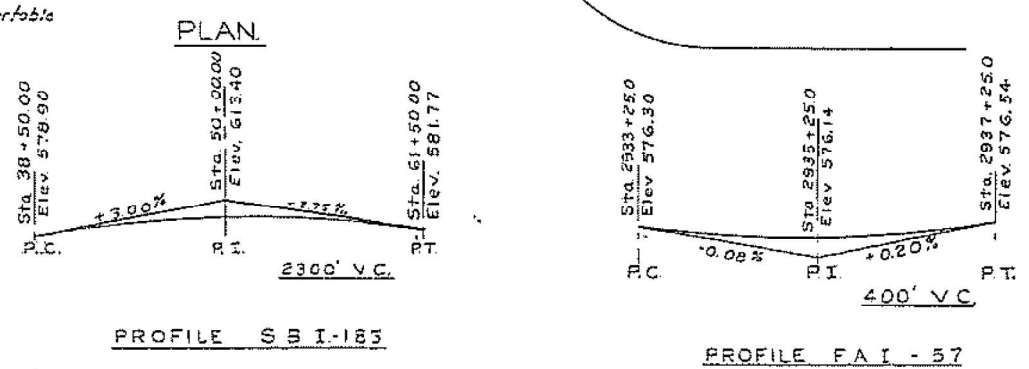
* Bridge seal sealant to be used on coefs of abuts only.
** Includes use on exposed inside vertical faces, top and exposed ends of wing walls.
*** Includes excavation for Slope Wall.

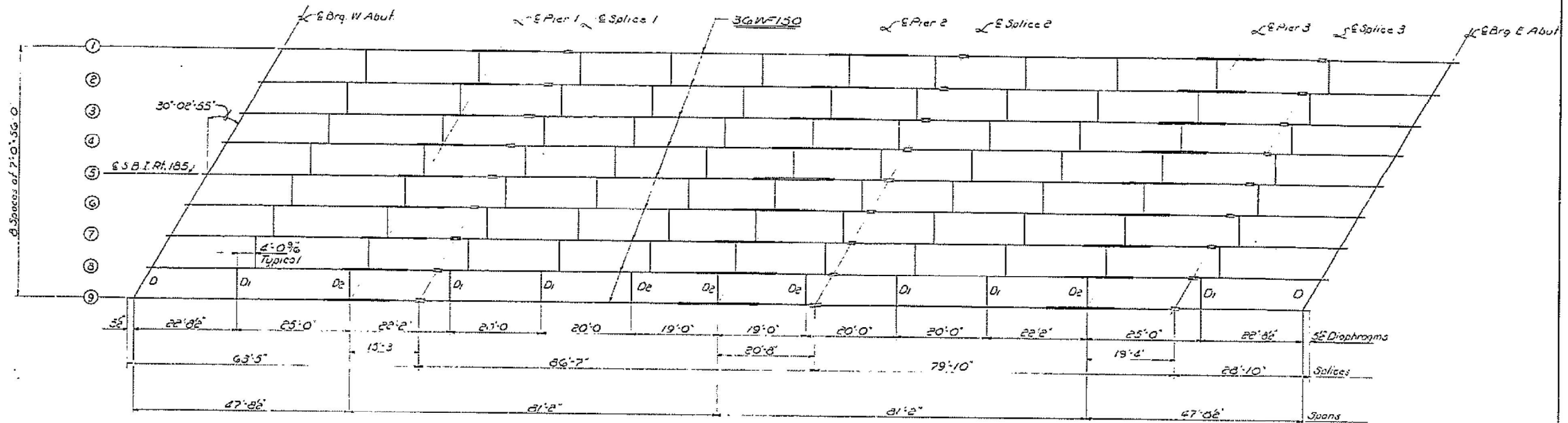
DESIGN STRESSES

fc = 1400 p.s.i. (Super & Sub.)
fs = 20,000 p.s.i. (Reinf.)
fs = 20,000 p.s.i. (Struct.)
vc = 75 p.s.i. (Ftgs.)
n = 10
Allow $\epsilon = 4/1000$

PROJECT I-57-3(11) 135
GENERAL PLAN & ELEVATION
SB I-185 over FAI-Rt 57
FAI-RT. 57
SEC. 26-1HB-1
FAYETTE COUNTY
STA. 2935 + 23.51

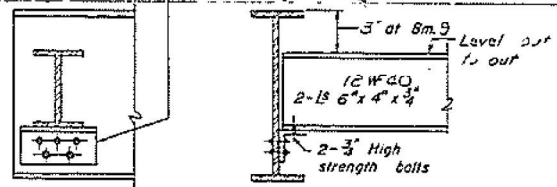
DESIGNED	EXAMINED
CHECKED	PASSED
DRAWN	APPROVED
CHECKED	



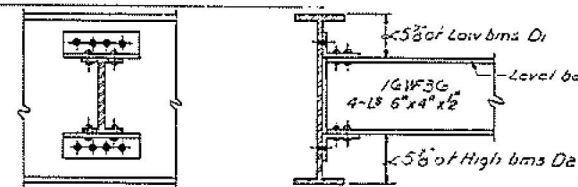


STRUCTURAL STEEL LAYOUT

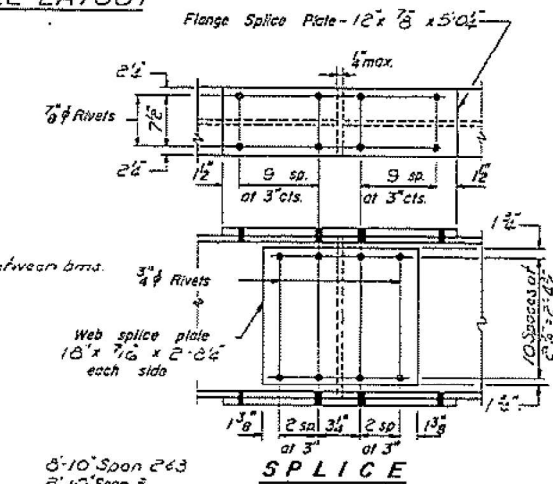
In lieu of shop rivets, angles may be attached in the shop with 3/4" high strength bolts or 4 c.f.w.



DIAPHRAGM D
1/4" Required



DIAPHRAGM D1 & D2
Required
48-D1
40-D2



SPLICE

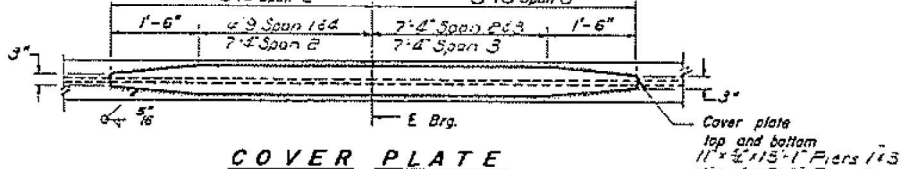
ELEVATIONS TOP WF

	1	2	3	4	5	6	7	8	9
Brn A	595.61	595.50	595.39	595.28	595.17	595.06	594.95	594.84	594.73
Pier 1	595.30	595.20	595.10	595.00	594.90	594.80	594.70	594.60	594.50
Splice 1	595.70	595.60	595.50	595.40	595.30	595.20	595.10	595.00	594.90
Pier 2	595.70	595.60	595.50	595.40	595.30	595.20	595.10	595.00	594.90
Splice 2	595.70	595.60	595.50	595.40	595.30	595.20	595.10	595.00	594.90
Pier 3	595.70	595.60	595.50	595.40	595.30	595.20	595.10	595.00	594.90
Splice 3	595.70	595.60	595.50	595.40	595.30	595.20	595.10	595.00	594.90
Brn E	595.70	595.60	595.50	595.40	595.30	595.20	595.10	595.00	594.90

DESIGNED: *Edwin J. Schaefer*
CHECKED: *Tom Malin*
DRAWN: *J. Schaefer*
CHECKED: *JFM*

EXAMINED: *W. J. Schaefer*
PASSED: *W. J. Schaefer*
APPROVED: *W. J. Schaefer*

JAN. 13 1966



COVER PLATE

STRUCTURAL STEEL
FA. RT. 57 SEC. 26-118-1
FAYETTE COUNTY
STA. 2935+23.51

I-2C 4-1-65

Jan. 25 1966

