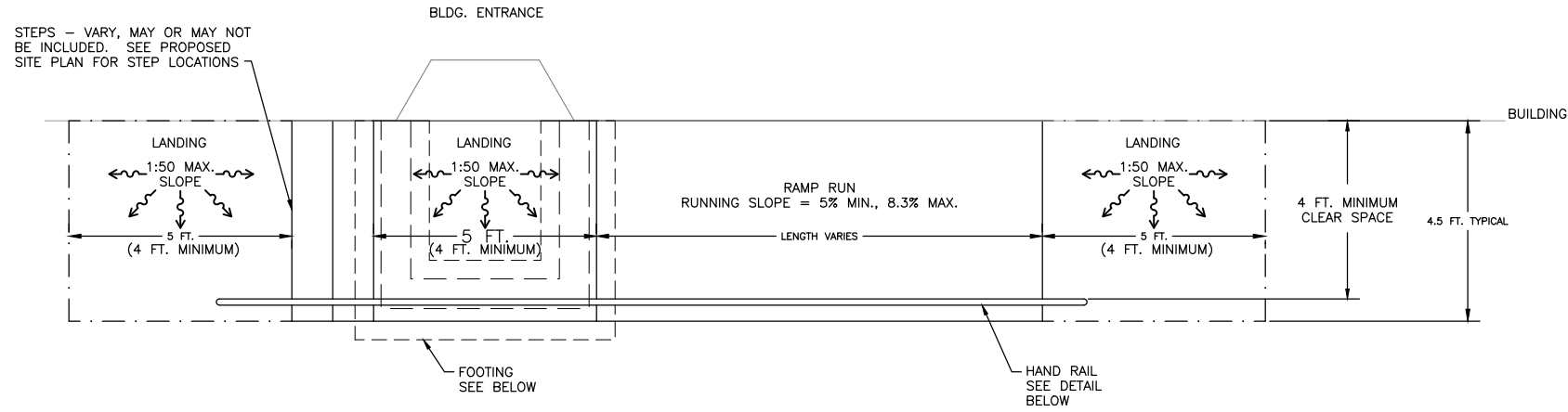
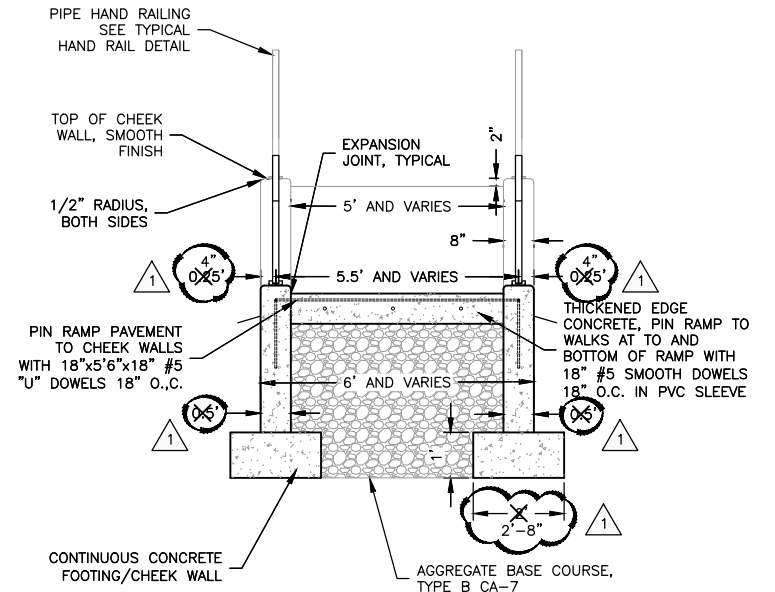


REVISIONS		
REV. NO.	DESCRIPTION	DATE
2	CONTRACTOR QUESTIONS	10/18/21
3	STORM SEWER REVISIONS	10/21/21



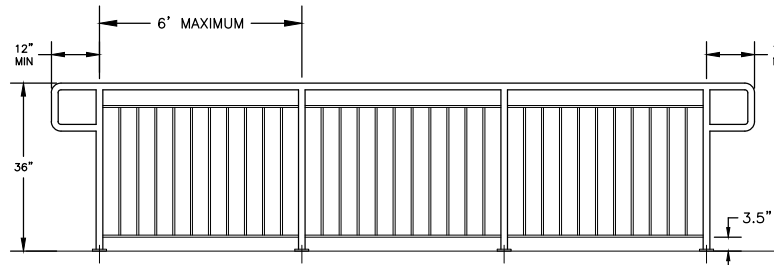
**ADA ACCESS RAMP STANDARD TYPICAL DETAIL**  
**PLAN VIEW**  
N.T.S.

NOTE: SLOPE AS INDICATED ON GRADING SHEETS.



NOTE:  
SEE WALL AND FOOTING DETAIL

**SIDEWALK RAMP CROSS SECTION**  
N.T.S.



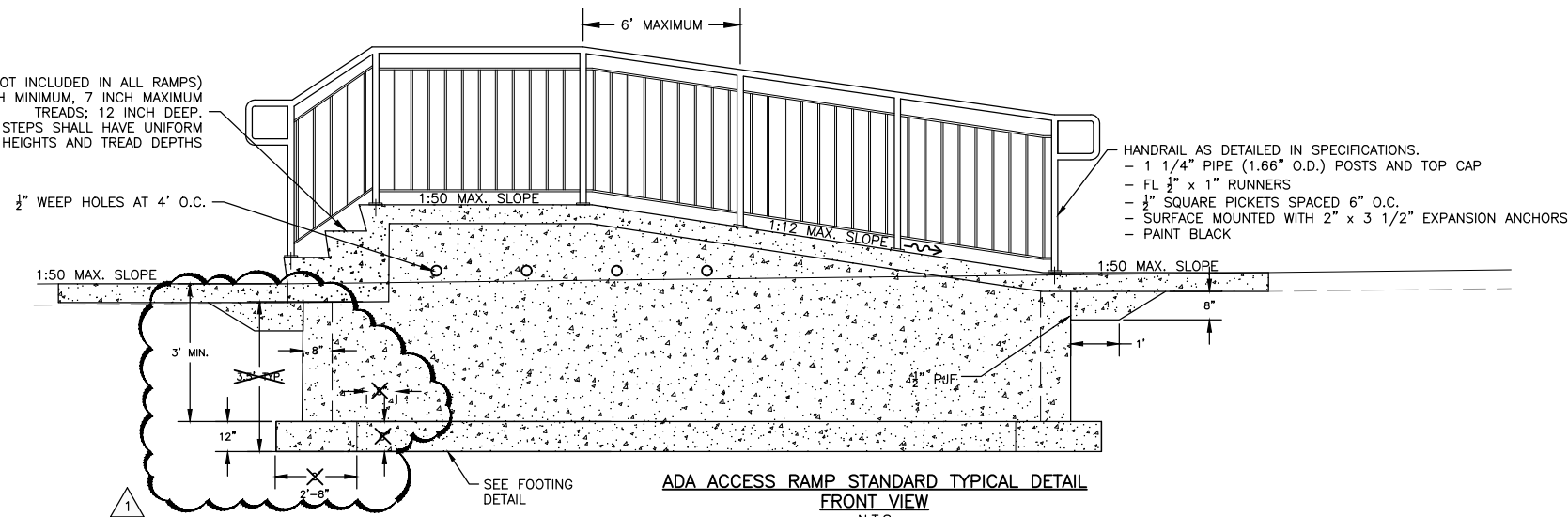
- 1 1/4" PIPE (1.66" O.D.) POSTS AND TOPCAP
- FL 1/2" x 1" RUNNERS
- 1/2" SQUARE PICKETS
- SURFACE MOUNTED WITH 1/2"x3-1/2" EXPANSION ANCHORS
- PAINT BLACK
- MAXIMUM SPACING FOR RAIL PANEL LENGTHS - 6' (ART. 509.05(d))

**TYPICAL RAILING DETAIL**  
N.T.S.

POWDER COAT FINISH: AA-C12-C42-R1X (CHEMICAL FINISH: CLEANED WITH INHIBITED CHEMICALS; CHEMICAL FINISH: ACID CHROMATE-FLUORIDE-PHOSPHATE CONVERSION COATING; ORGANIC COATING: AS SPECIFIED BELOW). PREPARE, PRETREAT, AND APPLY MANUFACTURER'S STANDARD BAKED POWDER COAT FINISH. COMPLY WITH COATING MANUFACTURER'S WRITTEN INSTRUCTIONS FOR CLEANING, SURFACE PREPARATION, PRETREATMENT, AND APPLICATION.

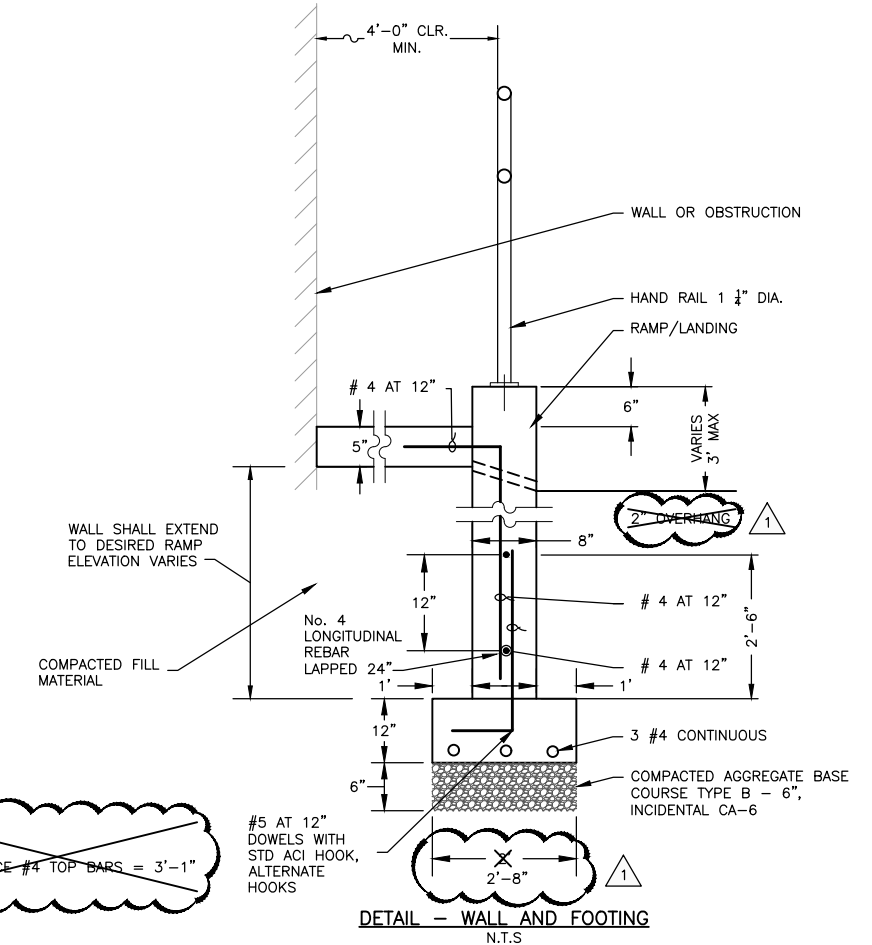
1. MATERIAL: POLYESTER POWDER COATING, 3.0 MIL (0.076 MM), COMPLY WITH AAMA 2604, INCLUDING, BUT NOT LIMITED TO, AVERAGE FILM THICKNESS, SUBJECT TO COMPLIANCE WITH REQUIREMENTS, PROVIDED BY THE FOLLOWING PRODUCTS:
  - a. "ARC 2001™" SPRAYLAC POWDER COATINGS
  - b. "1PC-440 SERIES," FORREST PAINT CO.
  - c. "SERIES 75," TIGER DRYLAC U.S.A., INC.
2. COLOR: BLACK
3. GLOSS: SEMI-GLOSS

STEPS VARY (NOT INCLUDED IN ALL RAMPS)  
RISER: 4 INCH MINIMUM, 7 INCH MAXIMUM  
TREADS: 12 INCH DEEP.  
EACH SET OF STEPS SHALL HAVE UNIFORM  
RISER HEIGHTS AND TREAD DEPTHS



**ADA ACCESS RAMP STANDARD TYPICAL DETAIL**  
**FRONT VIEW**  
N.T.S.

NOTE: SLOPE AS INDICATED ON GRADING SHEETS.



NOTE:  
BAR SPLICE #4 TOP BARS = 3'-1"

**DETAIL - WALL AND FOOTING**  
N.T.S.

REVISIONS		
REV. NO.	DESCRIPTION	DATE
1	CONTRACTOR QUESTIONS	10/14/21
3	CONTRACTOR QUESTIONS	10/21/21