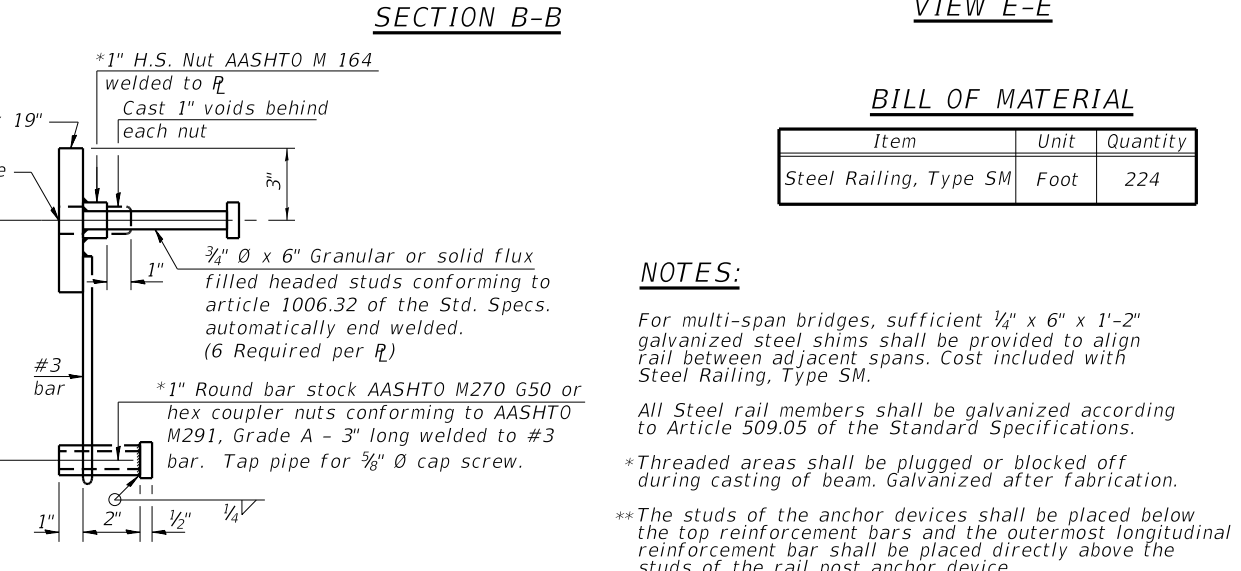
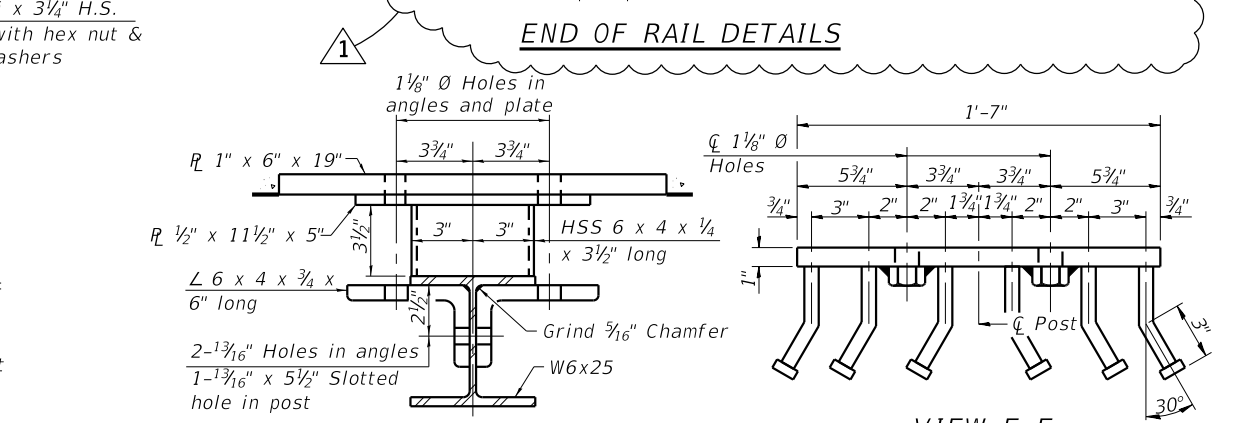
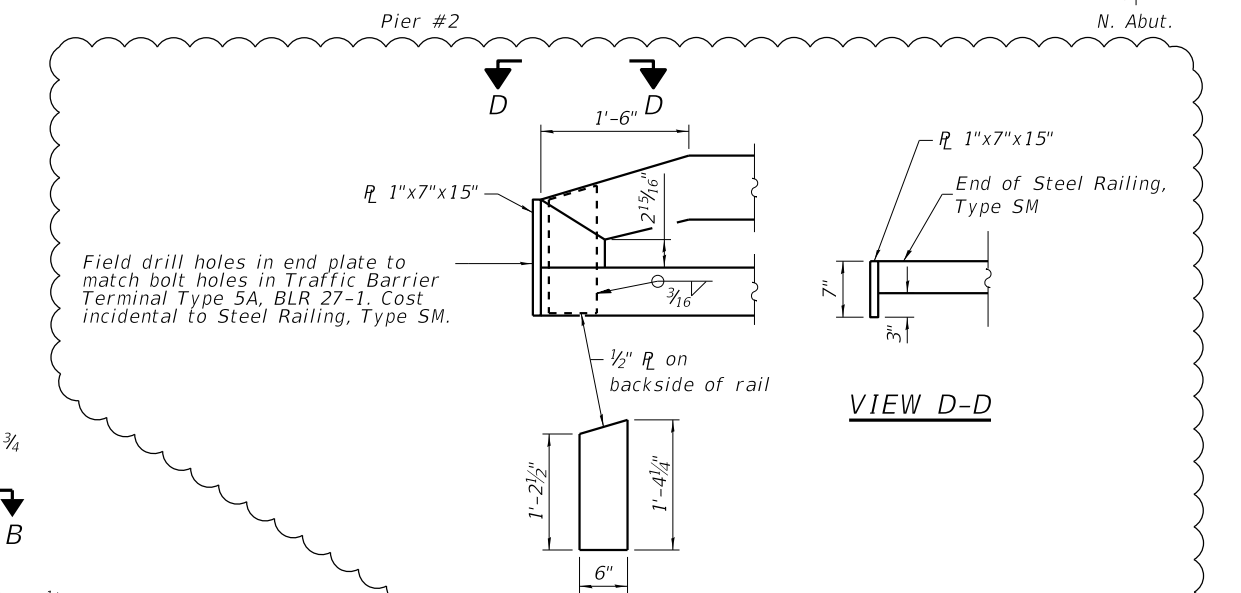
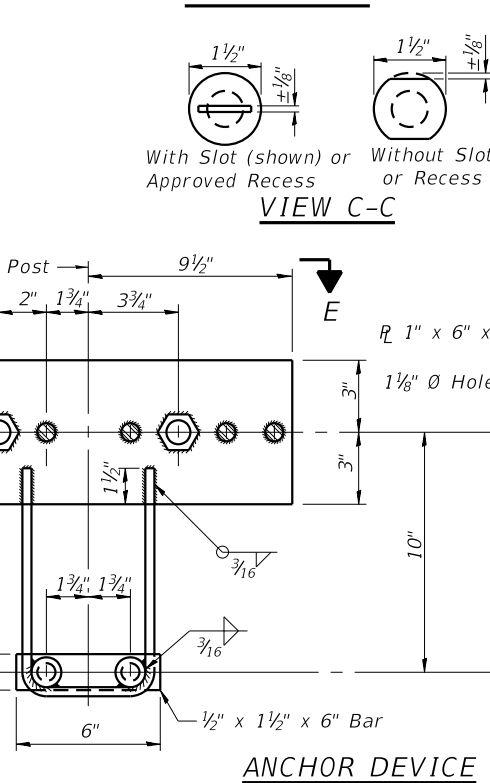
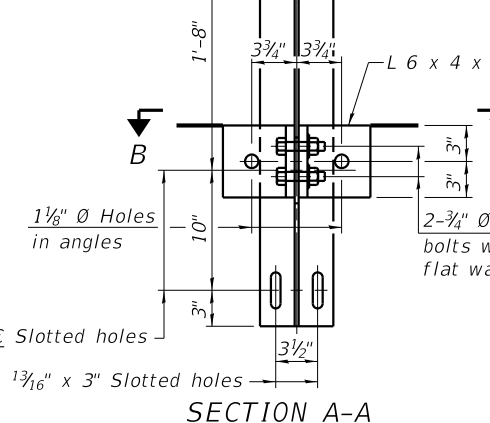
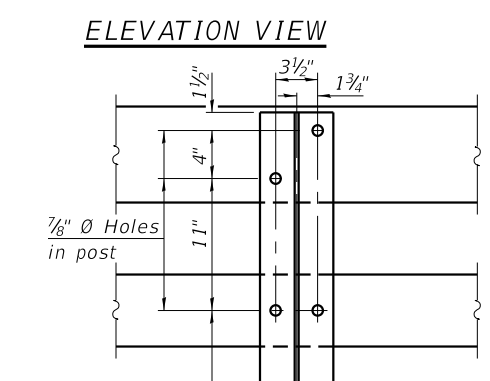
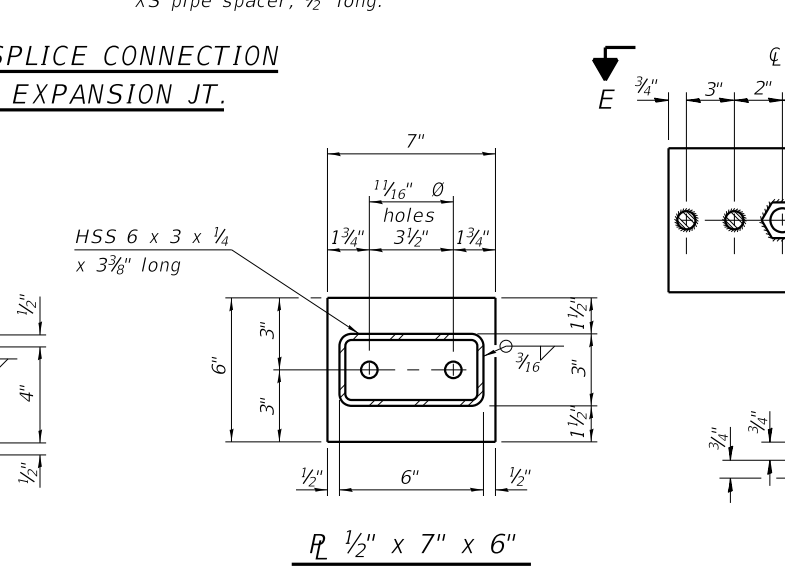
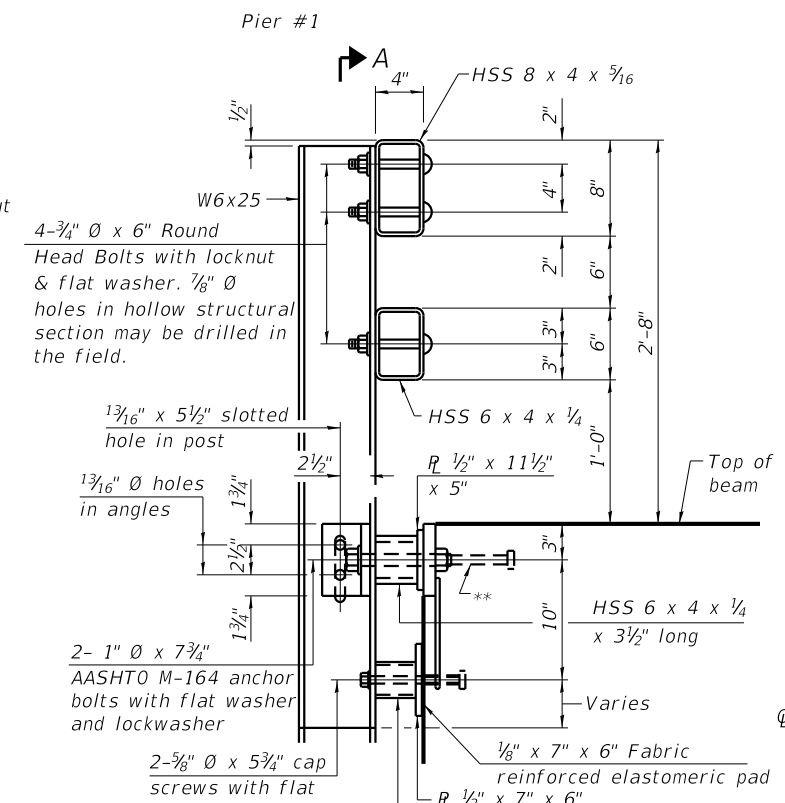
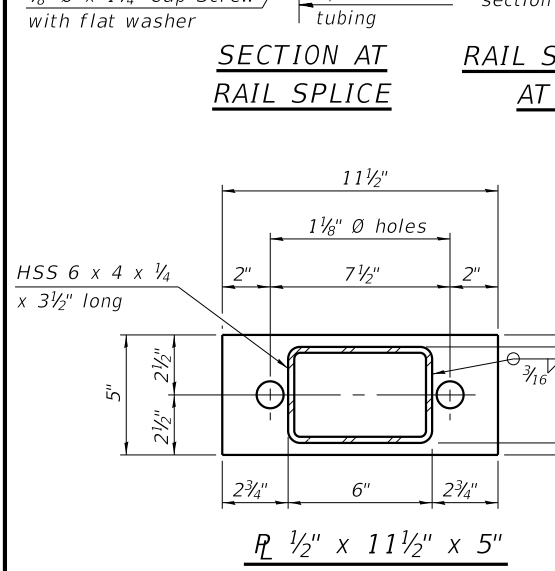
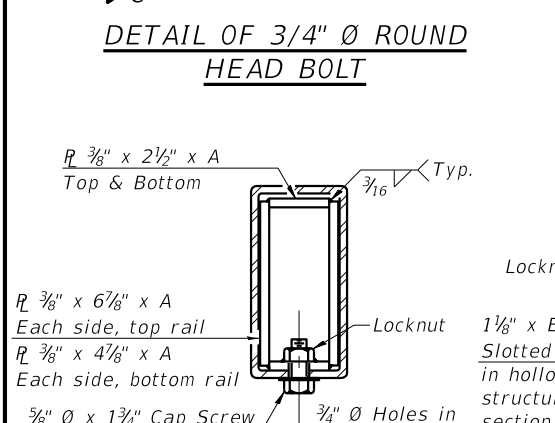
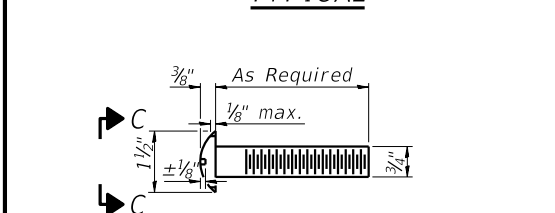
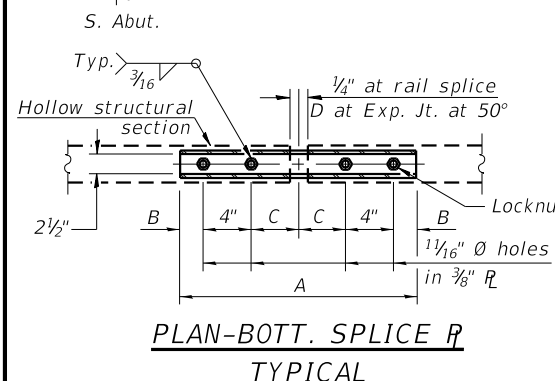
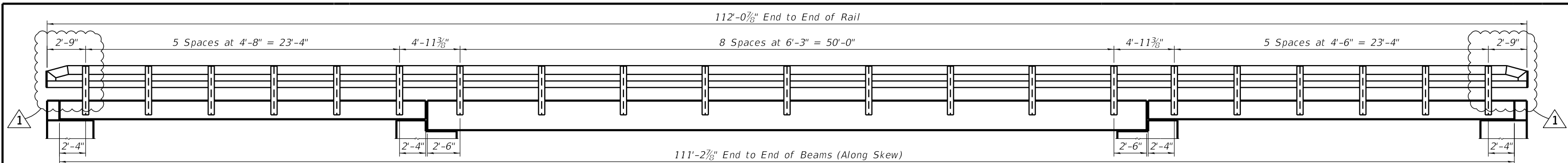


PRINT: ORGANIZER-BW.plt; cfig 10/19/2021 1:10:48 PM - PLOTTED
 FILE = S:\PROJECTS\2019\1392D19.LCH\DESIGN\CAD\SHEETS\1392D19-Steel Railing Type SM.dgn



BILL OF MATERIAL

Item	Unit	Quantity
Steel Railing, Type SM	Foot	224

NOTES:

For multi-span bridges, sufficient 1/4\"/>

All Steel rail members shall be galvanized according to Article 509.05 of the Standard Specifications.

*Threaded areas shall be plugged or blocked off during casting of beam. Galvanized after fabrication.

**The studs of the anchor devices shall be placed below the top reinforcement bars and the outermost longitudinal reinforcement bar shall be placed directly above the studs of the rail post anchor device.

REVISION	DATE	BY	REMARKS
1	10-19-2021	MRL	REVISED END OF RAIL DETAILS

DESIGNED MCW
 DRAWN DAN
 REVIEWED MCW
 APPROVED MRL

LASALLE COUNTY
 T.R. 222 (E. 1250TH ROAD) OVER A TRIBUTARY TO INDIAN CREEK
 STATION 20+00

WILLETT HOFMANN & ASSOCIATES INC.
 ENGINEERING ARCHITECTURE LAND SURVEYING
 809 EAST 2ND STREET, DIXON, IL 61021-0367
 T: 815-284-3381 DESIGN FIRM: #184-000918

STEEL RAILING, TYPE SM
 STRUCTURE NO. 050-3625
 STRUCTURAL SHEET NO. 12 OF 16 SHEETS

T.R.	SECTION	COUNTY	TOTAL SHEETS	SHEET NO.
222	18-09808-00-BR	LASALLE	31	22

WHA# 1392D19 CONTRACT NO. 87742
 ILLINOIS FED. AID PROJECT

This document is the copyrighted property of Willett, Hofmann & Associates, Inc., and may not be copied or used by any person without written permission. © Copyright 2019 Willett, Hofmann & Associates, Inc.