

STATE OF ILLINOIS
DEPARTMENT OF TRANSPORTATION

F.A. RTE.	SECTION	COUNTY	TOTAL SHEETS	SHEET NO.
VAR.	D2SW2016-1	VAR.	117	1
FED. ROAD DIST. NO. 2	ILLINOIS	CONTRACT NO. 64L12		

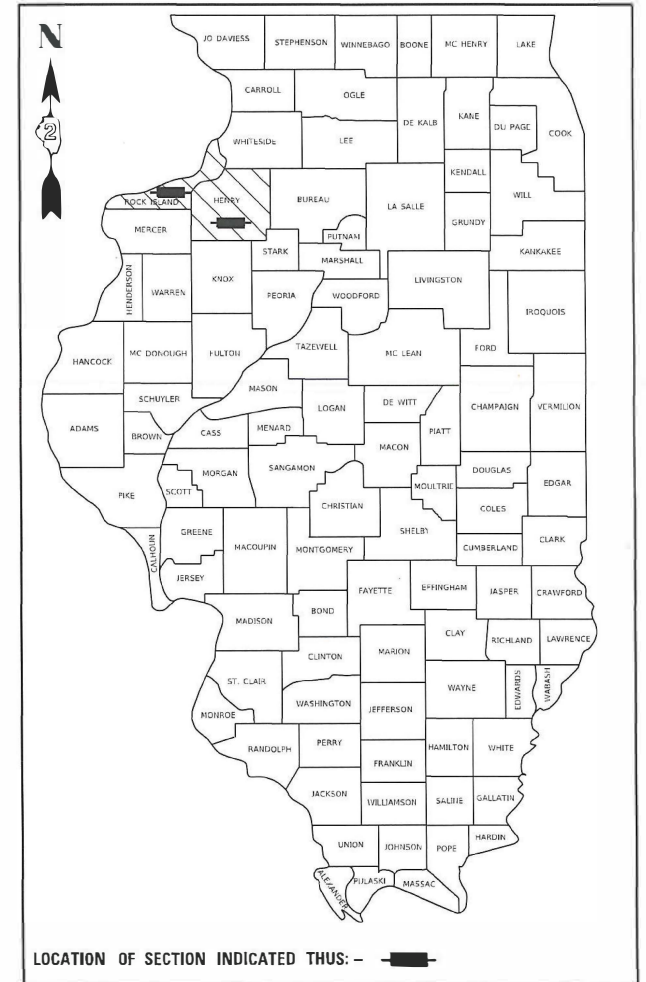
D-92-025-16

FOR INDEX OF SHEETS AND HIGHWAY STANDARDS, SEE SHEET NO. 2

PROPOSED HIGHWAY PLANS

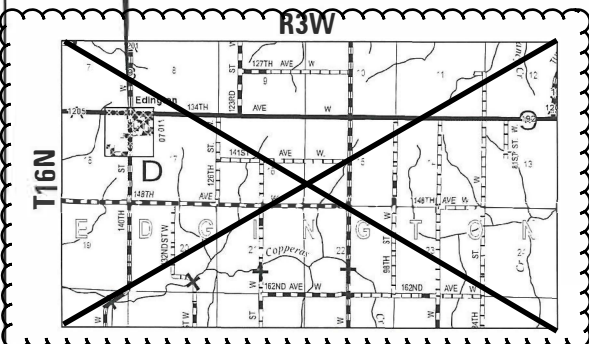
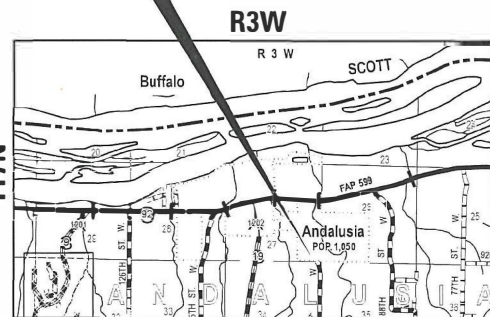
VARIOUS ROUTES
SECTION D2 SW2016-1
PROJECT STP-4LP3(180)
ADA SIDEWALK IMPROVEMENTS
HENRY AND ROCK ISLAND COUNTIES

C-92-017-19



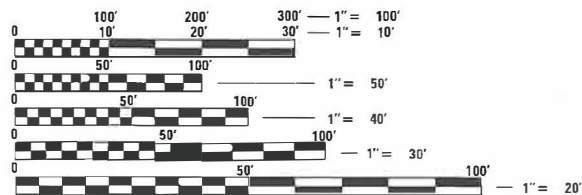
~~IL 192 AND 140TH ST W~~
~~EDGINGTON TOWNSHIP: SECTION 7, 8, 17, 18~~

IL 92 AND 1ST ST W
ANDALUSIA TOWNSHIP: SECTION 26, 27



US 150 / W 3RD ST,
2ND ST CT, 1ST ST,
E 2ND ST AND E 3RD ST
COAL VALLEY TOWNSHIP:
SECTION 26, 35

FAP 639 (US 150) / E ST,
D ST, C ST, B ST AND A ST
OXFORD TOWNSHIP: SECTION 21, 22

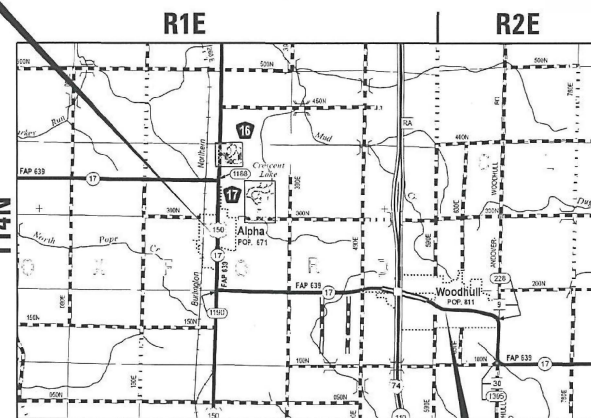
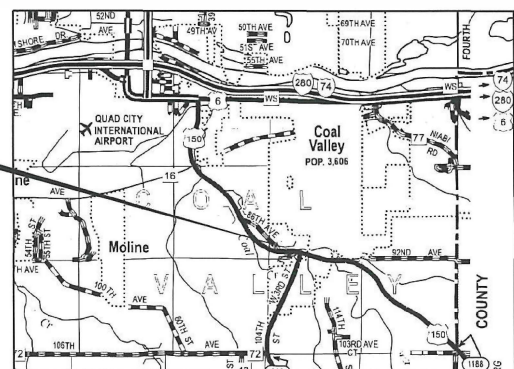


FULL SIZE PLANS HAVE BEEN PREPARED USING STANDARD ENGINEERING SCALES. REDUCED SIZED PLANS WILL NOT CONFORM TO STANDARD SCALES. IN MAKING MEASUREMENTS ON REDUCED PLANS, THE ABOVE SCALES MAY BE USED.

J.U.L.I.E.
JOINT UTILITY LOCATION INFORMATION FOR EXCAVATORS
1-800-892-0123
OR 811

PROJECT ENGINEER: STEVE ROBERY, P.E.
PROJECT MANAGER: A.J. CUCCIO, (815) 284-5504

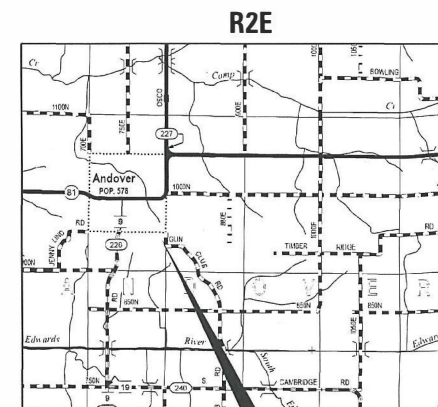
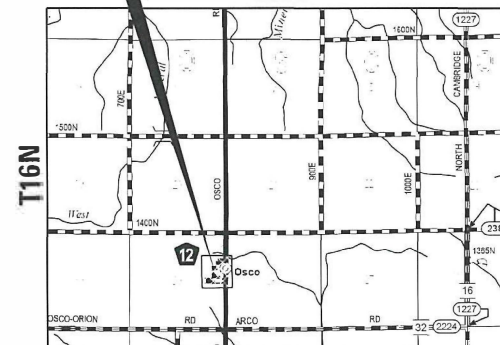
CONTRACT NO. 64L12



LOCATION MAPS
NOT TO SCALE

IL 17 / DIVISION ST AND E 3RD ST
OXFORD TOWNSHIP: SECTION 25
CLOVER TOWNSHIP: SECTION 30

OSCO RD / NORTH ST,
N RAILROAD ST AND SOUTH ST
OSCO TOWNSHIP: SECTION 28, 29



IL 81 / MULBERRY ST,
LOCUST ST AND ELM ST
ANDOVER TOWNSHIP: SECTION 8, 17

STATE OF ILLINOIS
DEPARTMENT OF TRANSPORTATION

SUBMITTED August 06 20 21

REGIONAL ENGINEER

October 1 20 21

ENGINEER OF DESIGN AND ENVIRONMENT

October 21 21

DIRECTOR OF HIGHWAYS PROJECT IMPLEMENTATION

PRINTED BY THE AUTHORITY
OF THE STATE OF ILLINOIS

INDEX OF SHEETS

1 COVER SHEET
 2 INDEX OF SHEETS / HIGHWAY STANDARDS
 3 GENERAL NOTES
 4-10 SUMMARY OF QUANTITIES
 11-25 SCHEDULE OF QUANTITIES
 26-36 HORIZONTAL AND VERTICAL CONTROL
 37-41 RIGHT OF WAY AND REMOVAL SHEETS - COAL VALLEY
 42 ~~RIGHT OF WAY AND REMOVAL SHEETS - ANDALUSIA~~ ¹
 43 ~~RIGHT OF WAY AND REMOVAL SHEETS - EDGINGTON~~
 44-48 ~~RIGHT OF WAY AND REMOVAL SHEETS - ALPHA~~
 49-50 RIGHT OF WAY AND REMOVAL SHEETS - WOODHULL
 51-53 RIGHT OF WAY AND REMOVAL SHEETS - ANDOVER
 54-56 RIGHT OF WAY AND REMOVAL SHEETS - OSCO
 57-70 SIDEWALK RAMP DETAILS - COAL VALLEY
 71-72 ~~SIDEWALK RAMP DETAILS - ANDALUSIA~~ ¹
 73-74 ~~SIDEWALK RAMP DETAILS - EDGINGTON~~
 75-91 ~~SIDEWALK RAMP DETAILS - ALPHA~~
 92-96 SIDEWALK RAMP DETAILS - WOODHULL
 97-100 SIDEWALK RAMP DETAILS - ANDOVER
 101-103 SIDEWALK RAMP DETAILS - OSCO
 104-105 TRAFFIC SIGNAL MODIFICATION SCHEDULE (COAL VALLEY)
 106-107 TRAFFIC SIGNAL MODIFICATION PLANS (COAL VALLEY)
 108-109 RAMP ACCESS DETAIL - US 150 AND 1ST ST., SE QUADRANT (COAL VALLEY)
 110 SIDEWALK AND DRIVEWAY PAVEMENT PAY AREAS (35.4)
 110 CATCH BASIN OR INLETS TO BE ADJUSTED OR RECONSTRUCTED (17.4)
 110 STANDARD INLET FOR CURB AND GUTTER (21.2)
 111 PERMANENT SURVEY MARKERS, TYPE II (66.2)
 112 PC CONCRETE ISLAND AND MEDIANS ACCESSIBLE TO THE DISABLED (4.1)
 113 ENTRANCE APPROACHES - URBAN AREA (25.1)
 114-116 TYPICAL PAVEMENT MARKINGS (41.1)
 116A PIPE HANDRAIL, SPECIAL - FOR RETAINING WALLS (64.2) ²

HIGHWAY STANDARDS:

000001-08 STANDARDS SYMBOLS, ABBREVIATIONS AND PATTERNS
 001006 DECIMAL OF AN INCH AND OF A FOOT
 280001-07 TEMPORARY EROSION CONTROL SYSTEMS
 424001-11 PERPENDICULAR CURB RAMPS FOR SIDEWALKS
 424011-04 DIAGONAL CURB RAMPS FOR SIDEWALKS
 424006-05 CORNER PARALLEL CURB RAMPS FOR SIDEWALKS
 424016-05 MID-BLOCK CURB RAMPS FOR SIDEWALKS
 424021-06 DEPRESSED CORNER FOR SIDEWALKS
 424026-03 ENTRANCE / ALLEY PEDESTRIAN CROSSINGS
 424031-02 MEDIAN PEDESTRIAN CROSSINGS
 442201-03 CLASS C AND D PATCHES
 542411 SLOPED METAL END SECTIONS FOR PIPE CULVERTS 15"(375 mm) THRU 60 " (1500 mm) DIA.
 602301-04 INLET, TYPE A
 602306-03 INLET, TYPE B
 602402-03 PRECAST MANHOLE TYPE A 5' (1.52 m) DIAMETER
 602601-06 PRECAST REINFORCED CONCRETE FLAT SLAB TOP
 604006-05 FRAME AND GRATE, TYPE 3
 606001-07 CONCRETE CURB TYPE B AND COMBINATION CONCRETE CURB AND GUTTER
 606201-04 TYPE B GUTTER (INLET, OUTLET & ENTRANCE)
 606301-04 PC CONCRETE ISLANDS AND MEDIANS
 666001-01 RIGHT OF WAY MARKERS
 701006-05 OFF-ROAD OPERATIONS, 2L, 2W, 15' (4.5M) TO 24" (600MM) FROM PAVEMENT EDGE
 701301-04 LANE CLOSURE, 2L, 2W, SHORT TIME OPERATIONS
 701311-03 LANE CLOSURE, 2L, 2W, MOVING OPERATIONS - DAY ONLY
 701501-06 URBAN LANE CLOSURE, 2L, 2W, UNDIVIDED
 701701-10 URBAN LANE CLOSURE, MULTILANE INTERSECTION
 701801-06 SIDEWALK, CORNER, OR CROSSWALK CLOSURE
 701901-08 TRAFFIC CONTROL DEVICES
 720011-01 METAL POST FOR SIGNS, MARKERS AND DELINEATORS
 728001-01 TELESCOPING STEEL SIGN SUPPORT
 729001-01 APPLICATIONS OF TYPES A AND B METAL POSTS (FOR SIGNS AND MARKERS)
 780001-05 TYPICAL PAVEMENT MARKINGS
 814001-03 HANDHOLES
 857001-01 STANDARD DESIGNATION DIAGRAM AND PHASE SEQUENCE
 877001-08 STEEL MAST ARM ASSEMBLY AND POLE 16' THROUGH 55'
 877011-10 STEEL COMBINATION MAST ARM ASSEMBLY AND POLE
 878001-11 CONCRETE FOUNDATION DETAILS
 880006-01 TRAFFIC SIGNAL MOUNTING DETAILS

MODEL: Default
 FILE NAME: P:\uplanroom.dat\illinois.gov\PHWDOT\Documents\DOT_Offices\District 2\Projects\0202516\CADDData\CAD\Sheets\0202516_AIC-int-index.dgn

USER NAME = cuccioaj	DESIGNED -	REVISED -
	DRAWN -	REVISED -
PLOT SCALE = 2.0000' / in.	CHECKED -	REVISED -
PLOT DATE = 8/10/2021	DATE -	REVISED -

**STATE OF ILLINOIS
 DEPARTMENT OF TRANSPORTATION**

**INDEX OF SHEETS AND
 STATE STANDARDS**

SCALE: SHEET 1 OF 1 SHEETS STA. TO STA.

F.A. RTE.	SECTION	COUNTY	TOTAL SHEETS	SHEET NO.
VAR.	D25W2016-1	VAR.	116	2
			CONTRACT NO. 64L12	
ILLINOIS FED. AID PROJECT				

