

SUMMARY OF QUANTITIES - SEC. 10-00966-00-BR

SECTION	COUNTY	TOTAL SHEETS	SHEET
FAS1523	CHAMPAIGN	39	2
FED. ROAD DIST. NO. 7	ILL. DIST.	FED. AID PROJECT	

* 10-00966-00-BR
Contract No. 91526

CODE	DESCRIPTION	UNIT	QUANTITY
20200100	Earth Excavation	Cu. Yd.	82
25000200	Seeding, Class 2	Acre	0.50
25000400	Nitrogen Fertilizer Nutrient	Pound	55
25000500	Phosphorus Fertilizer Nutrient	Pound	55
25000600	Potassium Fertilizer Nutrient	Pound	55
25100115	Mulch, Method 2	Acre	0.50
28000250	Temporary Erosion Control Seeding	Pound	50.
28000305	Temporary Ditch Checks	Foot	40
28000400	Perimeter Erosion Barrier	Foot	776
28000500	Inlet & Pipe Protection	Each	3
31101200	Sub-base Granular Material, Type B 4"	Sq. Yd.	193
35100700	Aggregate Base Course, Type A, 8"	Sq. Yd.	62
40200800	Aggregate Surface Course, Type B	Tons	30
40600275	Bituminous Materials (Prime Coat)	Pound	1545
40603310	Hot Mix Asphalt Surface Course, Mix "C", N50	Tons	414
40600982	Hot-Mix Asphalt Surface Removal-Butt Joint	Sq. Yd.	3720
40603080	Hot-Mix Asphalt Binder Course, IL-19.0, N50	Tons	5
42400100	Portland Cement Concrete Sidewalk 4 inch	Sq. Ft.	800
42400410	Portland Cement Concrete Sidewalk 8 inch	Sq. Ft.	192
44000100	Pavement Removal	Sq. Yd.	352
44000300	Curb Removal	Foot	48
44000600	Sidewalk Removal	Sq. Ft.	872
50100100	Removal of Existing Structures	Each	1
50105220	Pipe Culvert Removal	Foot	70
50200100	Structure Excavation	Cu. Yd.	428
50300225	Concrete Structures	Cu. Yd.	150.9
50300255	Concrete Superstructures	Cu. Yd.	326.6
50300260	Bridge Deck Grooving	Sq. Yd.	817
50300300	Protective Coat	Sq. Yd.	970
50500105	Furnishing & Erecting Structural Steel	L. Sum	1
50500505	Stud Shear Connectors	Each	273
50800105	Reinforcement Bars	Pound	5600
50800205	Reinforcement Bars, Epoxy Coated	Pound	77600
△ 50900805	Pedestrian Railing	Foot	168
△ 50901050	Steel Railing, Type SM	Foot	160.
51500100	Name Plates	Each	1
51201400	Furnishing Steel Piles HP10x42	Foot	1080
51202305	Driving Piles	Foot	1080
51203400	Test Pile Steel HP10x42	Each	2
51204650	Pile Shoes	Each	26
542C1063	Pipe Culverts, Class C, Type 2 18"	Foot	85
59100100	Geocomposite Wall Drain	Sq. Yd.	82.3
60600605	Concrete Curb Type B	Foot	10
X6061460	Paved Ditch (Special)	Foot	85
△ 63100085	Traffic Barrier Terminal, Type 6	Each	2
△ 63100167	Traffic Barrier Terminal, Type 1 (Special Tangent)	Each	2
67100100	Mobilization	L. Sum	1
X7010216	Traffic Control and Protection (Special)	L. Sum	1
△ 78201000	Terminal Marker-Direct Applied	Each	2
X2070304	Porous Granular Embankment (Special)	Cu. Yd.	157
XX004565	Grouted Riprap	Sq. Yd.	513
XX004566	Concrete Cut-Off Wall	Cu. Yd.	12
Z0013798	Construction Layout	L. Sum	1.
Z0046304	Pipe Underdrains For Structures 4"	Foot	170

△ SPECIALTY ITEMS

GENERAL NOTES

- New Fasteners shall be AASHTO M164 Type 1, mechanically Galvanized Bolts. Bolts 7/8" dia. holes 1 1/8" dia., unless otherwise noted.
- Calculated weight of new Structural Steel = 190,000 lbs.
- All new structural steel shall be AASHTO M 270 Grade 50W, except where otherwise noted.
- No field welding is permitted.
- Reinforcement bars shall conform to the requirements of ASTM A706 Gr 60 (IL Modified). See Special Provisions.
- Reinforcement bars designated (E) shall be epoxy coated.
- Bearing seat surfaces shall be constructed or adjusted to the designated elevation within a tolerance of 1/8 in. (0.01 ft.). Adjustment shall be made either by grinding the surface or by shimming the bearings.
- Structural steel shall only be painted for a distance equal to the depth of the embedment into the concrete cap plus 3 in. Those areas shall be primed in the shop with a Department approved zinc rich primer. No field painting shall be required. Paint system shall meet the requirements of Structural Specification 506 and 506.08 (B).
- All diaphragms shall be installed as steel is erected and secured with erection pins and bolts except as otherwise noted. Individual diaphragms at supports may be temporarily disconnected to install bearing anchor rods.
- Load carrying components designated "NTR" shall conform to the Supplemental Requirements for Notch Toughness, Zone 2.
- The Contractor shall make allowance for the deflection of forms, shrinkage and settlement of falsework, in addition to allowance for dead load deflection. Formwork shall be removed prior to the placement of the bridge approach pavement.
- Portions of the guardrail near the bridge shall be vertically adjusted to connect the end of the Type SM Bridge Railing.

- The locations of existing utilities as shown on the plan are for information only, and are not guaranteed. It shall be the Contractor's responsibility to ascertain their exact location from the utility companies and by field inspection.
- See the Plan & Profile sheet for roadway and shoulder tapers.
- Effective July 1, 1999, all vertical control surveys being done by or for the department of transportation should use the NAVD 88 as the datum of reference for all elevations. If any questions, contact surveys unit.
- The Removal of Existing Structures pay Item shall include the removal of the roadway bridge and the removal of the pedestrian bridge.

MIXTURE REQUIREMENTS TABLE

Location	CH 55	CH 55
Mixture Use	Surface	Binder
AC/PG	PG 64-22	PG 64-22
Design Air Voids	4.0% @ Ndes=50	4.0% @ Ndes=50
Mix Comp(Gradation)	IL 9.5	IL 19.0
Friction Aggregate	Mix C	N.A.
Mixture Weight	112	112
Quality Management Program	QC/QA	QC/QA
Sublot Size	N.A.	N.A.

UTILITIES

Call J.U.L.I.E. 1-800-892-0123
The Contractor shall coordinate the relocation of any utilities with the utility company where they conflict with the proposed improvements.

REVISED	△	10-16-15
REVISED	-	-----
REVISED	-	-----
REVISED	-	-----



ENGINEERING RESOURCE ASSOCIATES, INC.
CONSULTING ENGINEERS, SCIENTISTS & SURVEYORS

3002 CROSSING COURT
CHAMPAIGN, IL 61822
PHONE (217) 351-6268
FAX (217) 355-1902

38701 WEST AVENUE, SUITE 150 WARRENVILLE, ILLINOIS 60555
PHONE 630.393.3060, FAX 630.393.2132

10 S. RIVERSIDE PLAZA, SUITE 1800 CHICAGO, ILLINOIS 60606
PHONE 312.683.0110, FAX 312.474.6099

SUMMARY OF QUANTITIES

FAS 1523 (CH55) OVER UPPER SALT FORK
CHAMPAIGN COUNTY
SEC 10-00966-00-BR

SHEET	2
DWG NO.	13028soq.dgn
DATE	JUL 2015
PROJ NO.	C13028

SECTION	COUNTY	TOTAL SHEETS	SHEET
FAS1523	CHAMPAIGN	39	3
FED. ROAD DIST. NO. 7	ILLINOIS	FED. AID PROJECT	

* 10-00966-00-BR
Contract No. 91526

SCHEDULE OF QUANTITIES - SEC. 10-00966-00-BR

20200100

EARTH EXCAVATION	
LOCATION	CU. YDS.
Approach Pavement	40
Paved Ditches	28
Sidewalk	4
Field Entrances	10
TOTAL	82

31101200

SUB-BASE GRANULAR MATERIAL, TYPE B 4"	
LOCATION	SQ. YDS.
Bridge Approach Pavement	47
Bridge Approach Pavement Connectors	36
Sidewalk	110
TOTAL	193

35100700

AGGREGATE BASE COURSE, TYPE A, 8"	
LOCATION	SQ. YDS.
Field Entrance STA. 8+61.75 RT	31
Field Entrance STA. 10+85.25 RT	31
TOTAL	62

40200800

AGGREGATE SURFACE COURSE, TYPE B	
LOCATION	TONS
Field Entrance STA. 8+61.75 RT	15
Field Entrance STA. 10+85.25 RT	15
TOTAL	30

40600275

BITUMINOUS MATERIALS (PRIME COAT)	
LOCATION	POUND
STA. 8+88.50 TO STA. 9+38.50	762
STA. 10+61.50 TO STA. 11+11.50	762
Field Entrances	20
TOTAL	1545

40603310

HOT MIX ASPHALT SURFACE COURSE "C", N50	
LOCATION	TONS
STA. 8+88.50 TO STA. 9+38.50	190
STA. 10+61.50 TO STA. 11+11.50	190
Field Entrance STA. 8+61.75 RT	17
Field Entrance STA. 10+82.25 RT	17
TOTAL	414

40600982

HOT-MIX ASPHALT SURFACE REMOVAL-BUTT JOINT	
LOCATION	SQ. YDS.
STA. 6+30.0 TO STA. 9+58.17	1860
STA. 10+41.87 TO STA. 13+70.0	1860
TOTAL	3720

40603080

HOT-MIX ASPHALT BINDER COURSE, IL-19.0, N50	
LOCATION	TONS
Field Entrance STA. 8+61.75 RT	2.5
Field Entrance STA. 10+85.25 RT	2.5
TOTAL	5

42400100

PORTLAND CEMENT CONCRETE SIDEWALK 4 INCH	
LOCATION	SQ. FT.
STA. 8+74.00 TO STA. 9+59.00	401
STA. 10+41.00 TO STA. 10+71.00	180
STA. 10+95.00 TO STA. 11+50.00	211
TOTAL	800

42400410

PORTLAND CEMENT CONCRETE SIDEWALK 8 INCH	
LOCATION	SQ. FT.
STA. 8+50.00 TO STA. 8+74.00	96
STA. 10+71.00 TO STA. 10+95.00	96
TOTAL	192

44000600

SIDEWALK REMOVAL	
LOCATION	SQ. FT.
STA. 8+50.00 TO STA. 9+59.00	436
STA. 10+41.00 TO STA. 11+50.00	436
TOTAL	872

44000300

CURB REMOVAL	
LOCATION	FOOT
STA. 8+45.00 TO STA. 8+69.00	24
STA. 10+63.00 TO STA. 11+05.00	24
TOTAL	48

44000100

PAVEMENT REMOVAL	
LOCATION	SQ. YD.
STA. 9+29.00 TO STA. 9+59.00	176
STA. 10+41.00 TO STA. 10+71.00	176
TOTAL	352

50105220

PIPE CULVERT REMOVAL	
LOCATION	FOOT
STA. 10+13.00 RT TO STA. 10+83.00 RT	70
TOTAL	70

50300260

BRIDGE DECK GROOVING	
LOCATION	SQ. YDS.
Bridge Approach Pavement	274
Bridge Approach Pavement Connector	69
Bridge	474
TOTAL	817

50300300

PROTECTIVE COAT	
LOCATION	SQ. YDS.
Bridge Approach Pavement	274
Bridge Approach Pavement Connector	69
Bridge	506
Paved Ditches	35
Pedestrian Bridge	86
TOTAL	970

542C1063

PIPE CULVERTS, CLASS C, TYPE 2 18"	
LOCATION	FOOT
STA. 10+13.00 RT TO STA. 10+98.00 RT	85
TOTAL	85

60600605

CONCRETE CURB TYPE B	
LOCATION	FOOT
STA. 9+19.00 TO STA. 9+29.00	10
TOTAL	10

63100085

TRAFFIC BARRIER TERMINAL, TYPE 6	
LOCATION	EACH
STA. 9+16.00 TO STA. 9+60.00 RT	1
STA. 10+40.00 TO STA. 10+84.00 LT	1
TOTAL	2

63100167

TRAFFIC BARRIER TERMINAL, TYPE 1 (SPECIAL TANGENT)	
LOCATION	EACH
STA. 8+86.66 TO STA. 9+16.00 RT	1
STA. 10+84.00 TO STA. 11+13.00 LT	1
TOTAL	2

REVISED	△	10-16-15
REVISED	-	-----
REVISED	-	-----
REVISED	-	-----



ENGINEERING
RESOURCE
ASSOCIATES, INC.
CONSULTING ENGINEERS, SCIENTISTS
& SURVEYORS

3002 CROSSING COURT
CHAMPAIGN, IL 61822
PHONE (217) 351-6268
FAX (217) 355-1902

35701 WEST AVENUE, SUITE 150 WARRENVILLE, ILLINOIS 60055
PHONE 630.393.3060, FAX 630.393.2152
10 S. RIVERSIDE PLAZA, SUITE 1800 CHICAGO, ILLINOIS 60606
PHONE 312.683.0110, FAX 312.474.6099

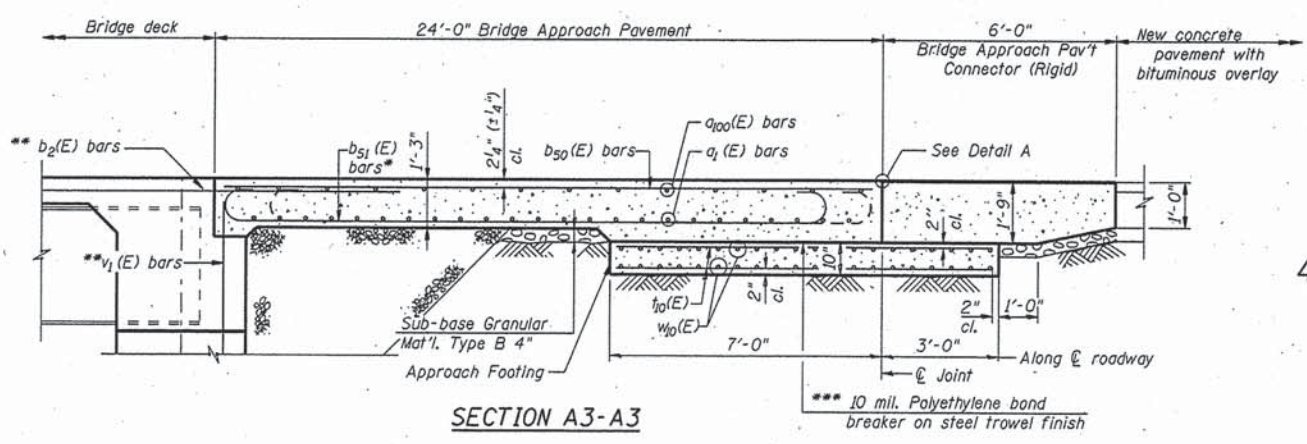
SCHEDULE OF QUANTITIES

FAS 1523 (CH55) OVER UPPER SALT FORK
CHAMPAIGN COUNTY
SEC 10-00966-00-BR

SHEET 3

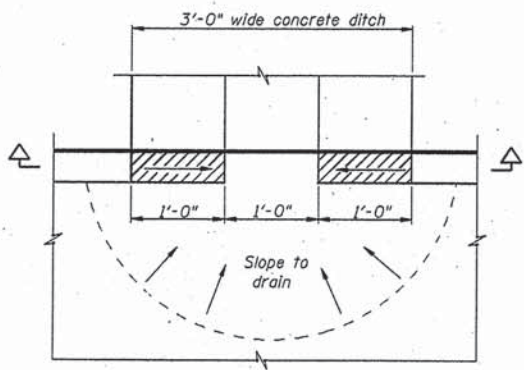
DWG NO. 13028soq.dgn
DATE JUL 2015

PROJ NO. C13028

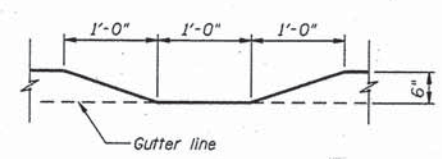


SECTION A3-A3

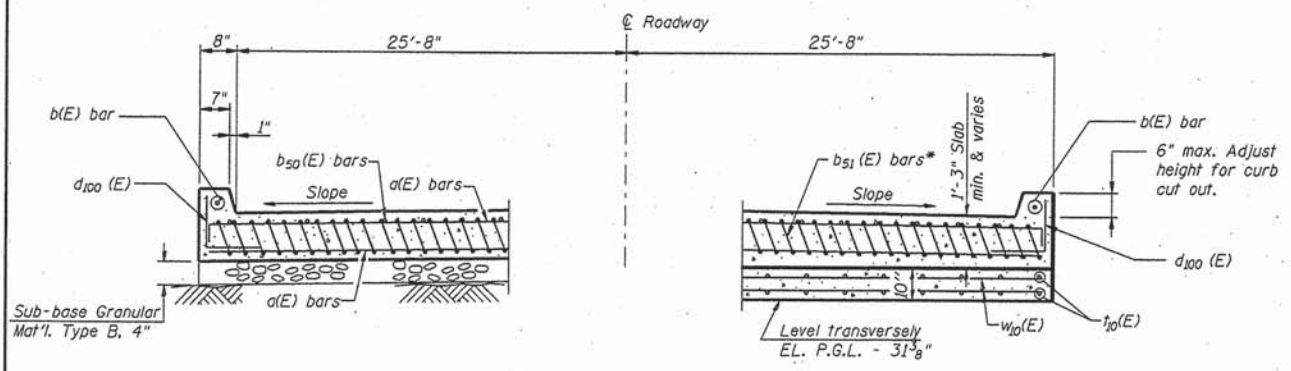
* Tilt hooked #9 b₅₁(E) bars as required to maintain clearance.
** b₂(E) and v₁(E) bar are billed with Superstructure.



CURB CUT-OUT DETAIL



CURB CUT-OUT SECTION

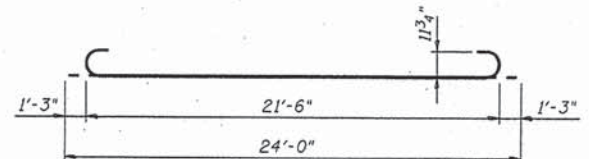


NEAR ABUTMENT

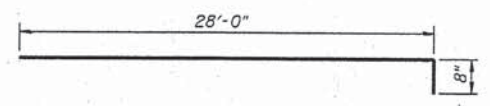
SECTION A4-A4

(See Plan for dimensions not shown)

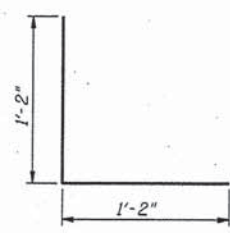
AT APPROACH FOOTING



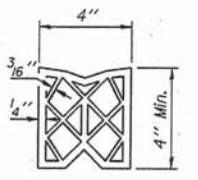
BAR b₅₀(E)



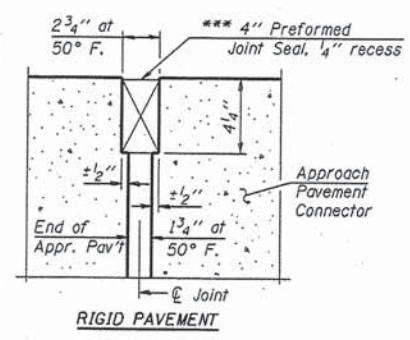
BAR a₁₀₀(E)



BAR d₁₀₀(E)



PREFORMED JOINT SEAL



DETAIL A

*** Cost included with Concrete Superstructure.

REINFORCING LIST BOTH BRIDGE APPROACH PAVEMENTS				
Bar	No.	Size	Length	Shape
a ₁ (E)	164	# 5	28'-0"	—
a ₁₀₀ (E)	80	# 5	28'-8"	—
b ₅₀ (E)	82	# 5	23'-6"	—
b ₅₁ (E)	252	# 9	24'-0"	—
b ₉₉ (E)	4	# 5	5'-2"	—
b ₁₀₀ (E)	4	# 5	14'-10"	—
d ₁₀₀ (E)	96	# 5	2'-4"	┘
t ₁₀ (E)	212	# 4	9'-6"	—
w ₁₀ (E)	160	# 5	28'-0"	—

BILL OF MATERIAL BOTH BRIDGE APPROACH PAVEMENTS		
Reinforcement Bars, Epoxy Coated	Lbs.	36090
Concrete Superstructure	Cu. Yds.	133.4
Concrete Structures	Cu. Yds.	32.6
Bridge Deck Grooving	Sq. Yd.	274
Protective Coat	Sq. Yd.	274
Sub-base Granular Mat'l. Type B 4"	Sq. Yd.	47
Earth Excavation	Cu. Yd.	40

NOTES:
Approach slab concrete shall be measured and paid for as Concrete Superstructures.
Approach footing concrete shall be measured and paid for as Concrete Structures.
Reinforcement bars designated (E) shall be epoxy coated.
The approach footing maximum applied service bearing pressure (Q_{max}) = 2.0 ksf.

REVISED	10-16-15
REVISED	-
REVISED	-
REVISED	-



ENGINEERING RESOURCE ASSOCIATES, INC.
CONSULTING ENGINEERS, SCIENTISTS & SURVEYORS

3002 CROSSING COURT
CHAMPAIGN, IL 61822
PHONE (217) 351-6268
FAX (217) 355-1902

35701 WEST AVENUE, SUITE 150 WARRENVILLE, ILLINOIS 60555
PHONE 630.393.3066, FAX 630.393.2192
10 S. RIVERSIDE PLAZA, SUITE 1800 CHICAGO, ILLINOIS 60606
PHONE 312.683.0116, FAX 312.474.6099

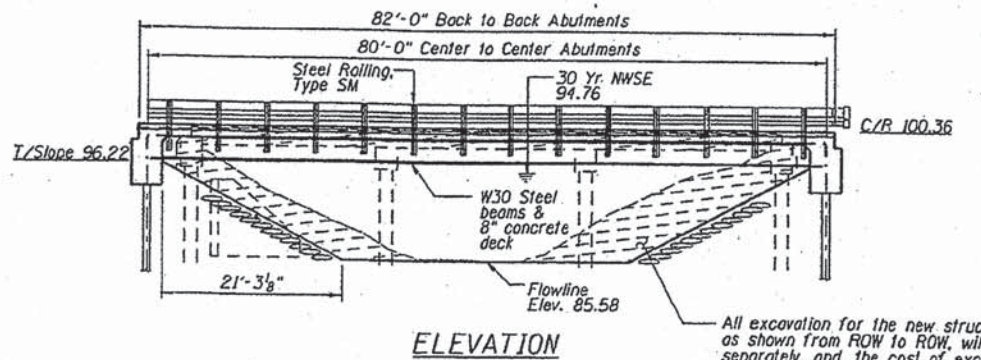
BRIDGE APPROACH PAVEMENT (SHEET 2 OF 2)

FAS 1523 (CH5) OVER UPPER SALT FORK
CHAMPAIGN COUNTY
SEC 10-00966-00-BR

SHEET	11
DWG NO.	13028appr.dgn
DATE	JUL 2015
PROJ NO.	CI3028

ROUTE NO.	SECTION	COUNTY	SHEET	TOTAL
FAS1523	4	CHAMPAIGN	39	22
FED. ROAD DIST. NO. 7	NUMBER	FED. AID PROJECT		

10-00966-00-BR
Contract No. 91526



ELEVATION

All excavation for the new structure, B/B abutment as shown from ROW to ROW, will not be paid for separately, and the cost of excavation, hauling excess material, and disposal of excess material, shall be included in the cost of removal of existing structures. No additional compensation will be allowed.

DESIGN SPECIFICATIONS

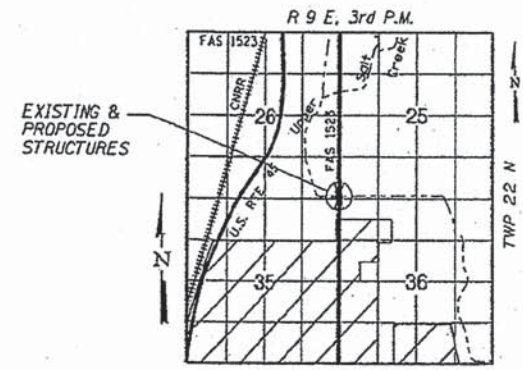
AASHTO LRFD (2007) and applicable Interims

DESIGN LOADING

HL-93
25 P.S.F. Future Wearing Surface

DESIGN STRESSES

$f'_c = 3,500$ psi (Cast in Place Concrete)
 $f_y = 50,000$ psi (M270 Grades 50 & 50W)
 $f_y = 60,000$ psi (Reinforcement)

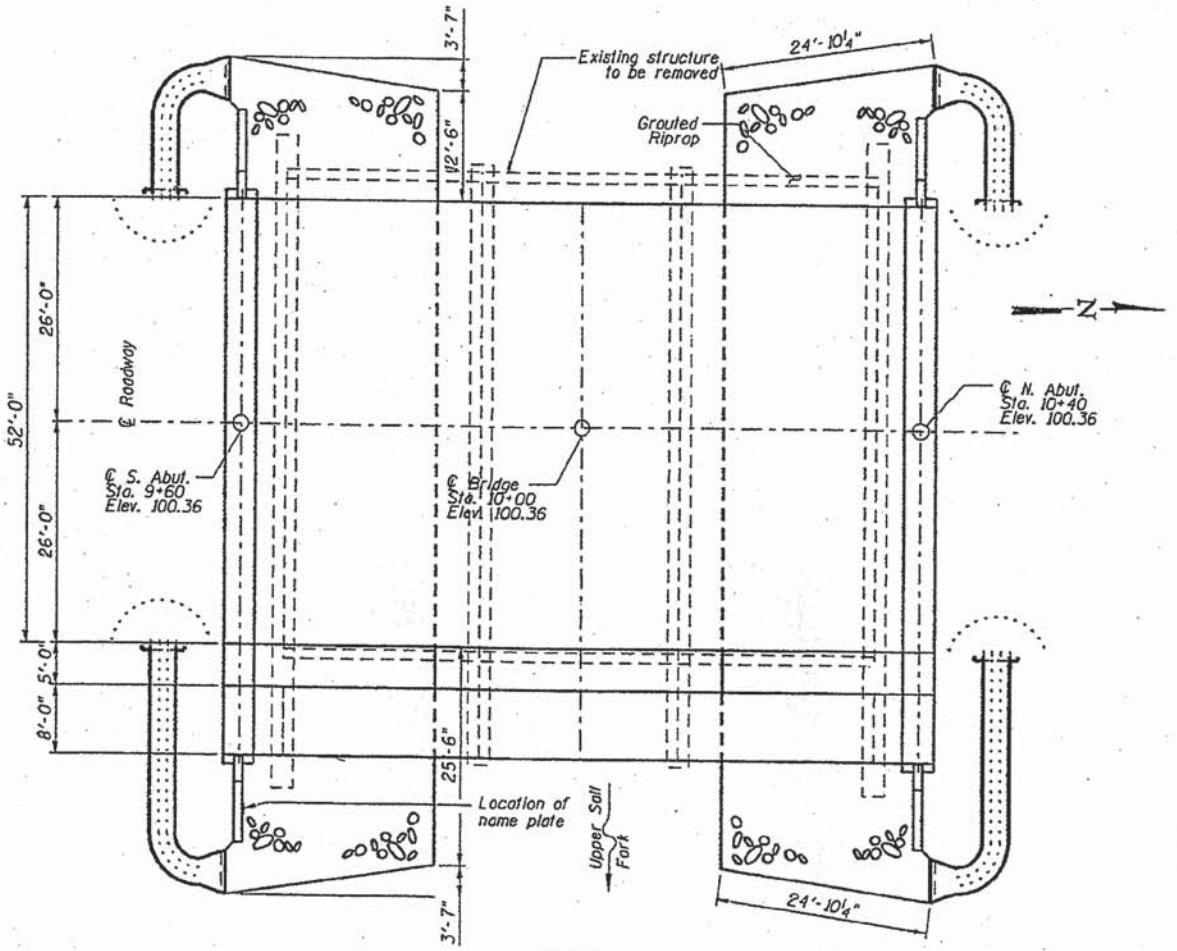


LOCATION SKETCH

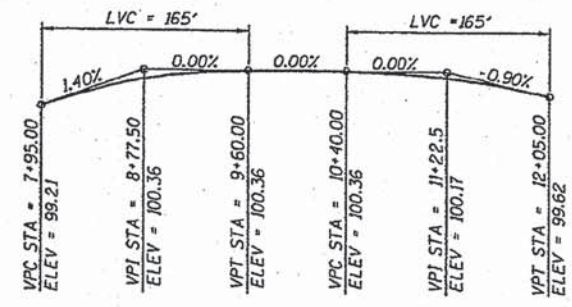
STRUCTURE NO. 010-4552
SEC. 10-00966-00-BR BUILT 20...
FAS 1523/CH 55
CHAMPAIGN COUNTY
LOADING HL 93

NAME PLATE

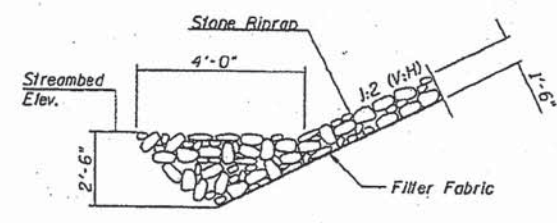
See Standard 515001



PLAN



PROFILE GRADE



RIPRAP SECTION

WATERWAY DATA

Drainage Area	9.3 Sq. Mi.
Existing Opening (30 Yr.)	303.6 Sq. Ft.
Required Opening (30 Yr.)	261.8 Sq. Ft.
Proposed Opening (30 Yr.)	524.15 Sq. Ft.
Design Discharge (30 Yr.)	1641 C.F.S.
Computed Discharge (100 Yr.)	2292 C.F.S.
30 Year Head	0.02 Ft.
100 Year Head	0.34 Ft.

TOTAL BILL OF MATERIAL

ITEM	UNIT	SUPER	SUB	TOTAL
Porous Granular Embankment (Special)	Cu. Yd.	-	157	157
Removal of Existing Structures	Each	1	-	1
Structure Excavation	Cu. Yd.	-	428	428
Concrete Structures	Cu. Yd.	-	150.9	150.9
Concrete Superstructures	Cu. Yd.	326.6	-	326.6
Bridge Deck Grooving	Sq. Yd.	817	-	817
Protective Coat	Sq. Yd.	970	-	970
Furnishing & Erecting Structural Steel	L. Sum	1	-	1
Reinforcement Bars	Pound	-	5600	5600
Reinforcement Bars, Epoxy Coated	Pound	76900	700	77600
Steel Railing, Type SM	Foot	160	-	160
Name Plates	Each	-	1	1
Furnishing Steel Piles HPI0x42	Foot	-	1080	1080
Driving Piles	Foot	-	1080	1080
Test Pile Steel HPI0x42	Each	-	2	2
Pile Shoes	Each	-	26	26
Geocomposite Wall Drain	Sq. Yds.	-	82.3	82.3
Pipe Underdrains For Structures 4"	Foot	-	170	170
Grouted Riprap	Sq. Yds.	-	513	513
Concrete Cut-Off Wall	Cu. Yd.	-	12	12
Pedestrian Railing	Foot	168	-	168
Stud Shear Connector	Each	273	-	273

GENERAL NOTES

- Layout of slope protection system may be varied in the field to suit ground conditions as directed by the Engineer.
- The Contractor shall drive 1 steel test pile in a permanent location at each abutment and each pier as directed by the Engineer before ordering the remainder of piles.
- Boring Data is shown only as a guide to bidders in estimating soil conditions which may be encountered during construction.
- Class S1 or MS Concrete shall be used in the abutments and piers.
- Class BS concrete shall be used for the bridge deck.



I certify that to the best of my knowledge, information and belief, this bridge design is structurally adequate for the design loading shown on the plans. The design is an economical one for the style of structure and complies with the requirements of the current AASHTO Standard Specifications for Highway Bridges.

JOHN A. FRAUENHOFER
Illinois Licensed Structural Engineer Number 4192
License Expires 11/30/16

DSGN	C.S. Sedlacko				
DR	T.W. Wolf				
CHK	J.R. Wolf				
APVD	J.A. Fraenhoffer				
NO.	DATE	REVISION	BY	APVD	



ENGINEERING RESOURCE ASSOCIATES, INC.
CONSULTING ENGINEERS, SCIENTISTS & SURVEYORS

3002 CROSSING COURT
CHAMPAIGN, IL 61822
PHONE (217) 351-6268
FAX (217) 355-1902

35701 WEST AVENUE, SUITE 150 WARRENVILLE, ILLINOIS 60555
PHONE (630) 391-3460, FAX (630) 393-2151
10 S. RIVERSIDE PLAZA, SUITE 1800 CHICAGO, ILLINOIS 60606
PHONE 312.683.0110, FAX 312.474.6099

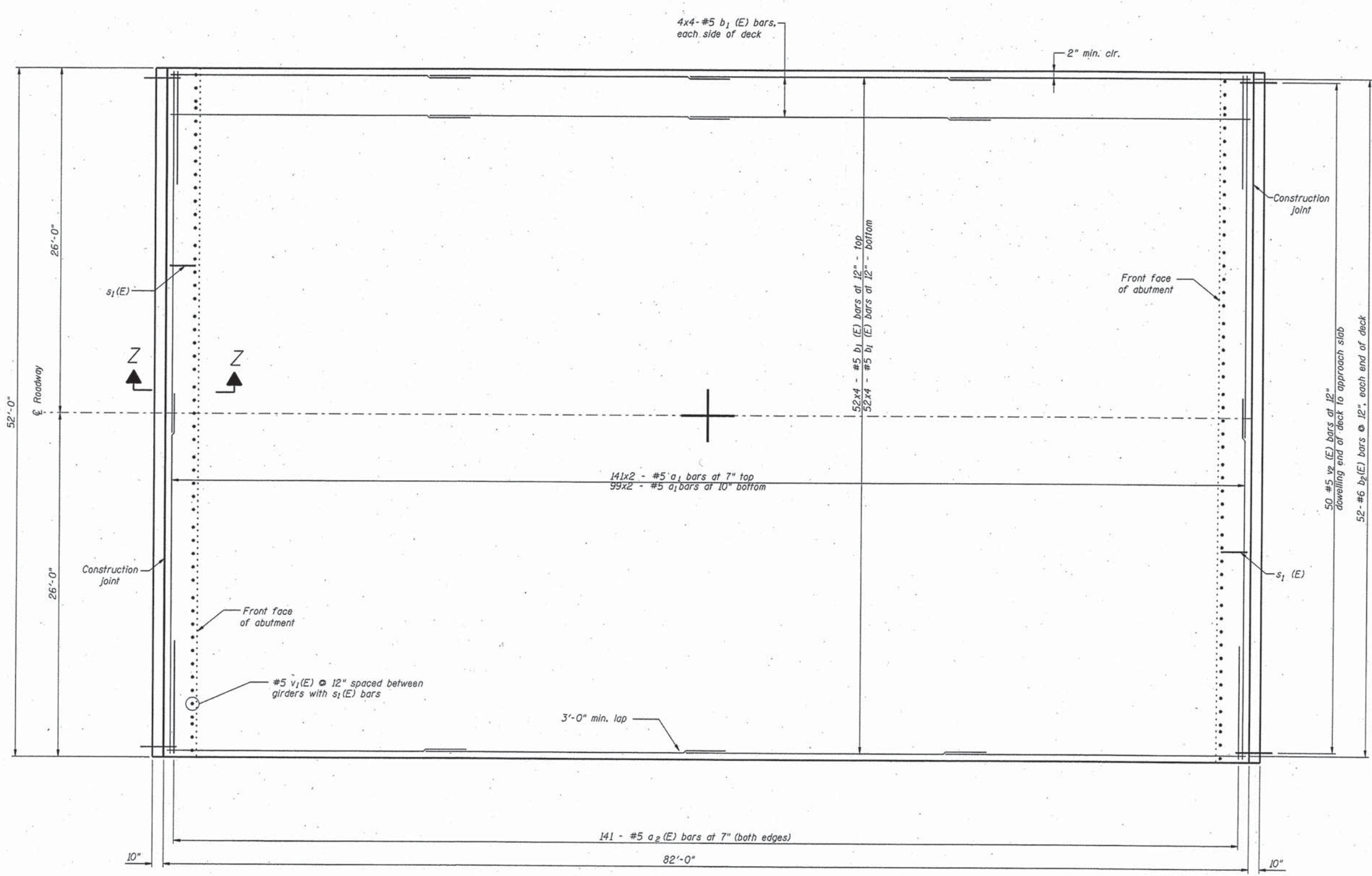
GENERAL PLAN AND ELEVATION

FAS 1523 (CH55) OVER UPPER SALT FORK
CHAMPAIGN COUNTY
SEC 10-00966-00-BR

SHEET	22
DWG NO.	13028gpe.dgn
DATE	JUL 2015
PROJ NO.	CJ3028

SECTION	COUNTY	TOTAL SHEETS	SHEET NO.
FAS1523	CHAMPAIGN	39	27
FED. ROAD DIST. NO. 7	ILLINOIS	FED. AID PROJECT	

* 10-00966-00-BR
Contract No. 91526



BILL OF MATERIAL SUPERSTRUCTURE

Bar	No.	Size	Length	Shape
a ₁ (E)	480	# 5	27'-3"	—
a ₂ (E)	282	# 5	8'-7"	✓
b ₁ (E)	448	# 5	22'-9"	—
b ₂ (E)	104	# 6	8'-0"	—
m ₁ (E)	16	# 6	36'-0"	—
m ₂ (E)	176	# 6	4'-6"	—
m ₃ (E)	8	# 6	8'-7"	—
s ₁ (E)	102	# 5	9'-2"	□
v ₁ (E)	102	# 5	6'-0"	—
Reinforcement Bars, Epoxy Coated			Lbs.	31820
Concrete Superstructure			Cu. Yds.	177
Bridge Deck Grooving			Sq. Yds.	474
Protective Coat			Sq. Yds.	506

The quantity for Concrete Superstructure includes the volume of the fillets.

DECK PLAN

REVISED	▲	10-16-15
REVISED	-	-----
REVISED	-	-----
REVISED	-	-----



ENGINEERING RESOURCE ASSOCIATES, INC.
CONSULTING ENGINEERS, SCIENTISTS & SURVEYORS

3002 CROSSING COURT
CHAMPAIGN, IL 61822
PHONE (217) 351-6268
FAX (217) 355-1902

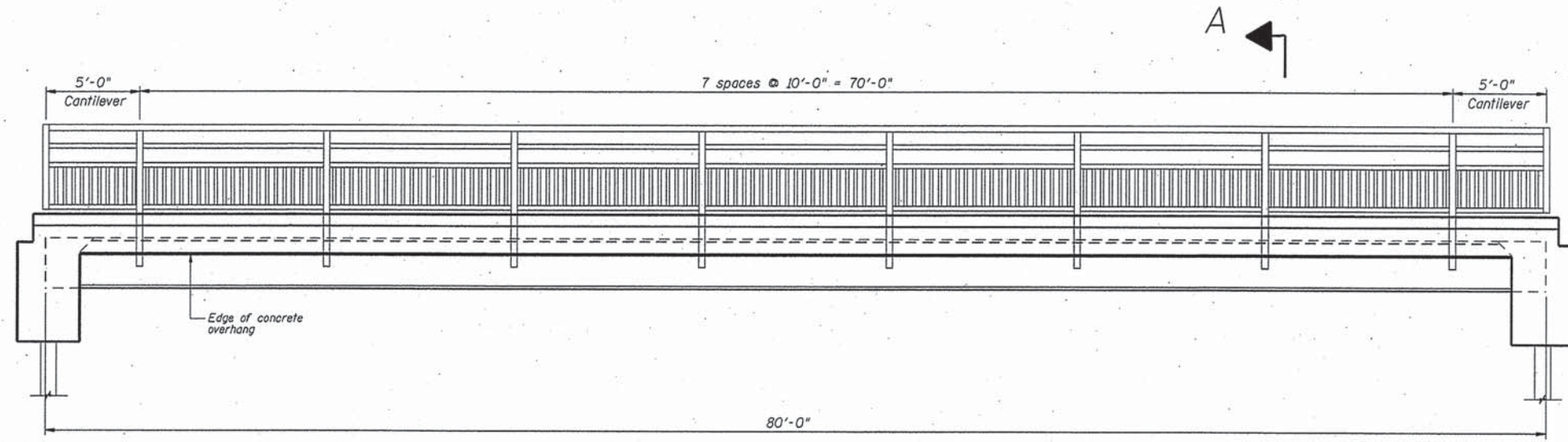
• 35701 WEST AVENUE, SUITE 150 WARRENVILLE, ILLINOIS 60555
PHONE 630.393.3060, FAX 630.393.2152
• 10 S. RIVERSIDE PLAZA, SUITE 1800 CHICAGO, ILLINOIS 60606
PHONE 312.683.0110, FAX 321.474.6099

SUPERSTRUCTURE (SHEET 1 of 3)
FAS 1523 (CH55) OVER UPPER SALT FORK
CHAMPAIGN COUNTY
SEC 10-00966-00-BR

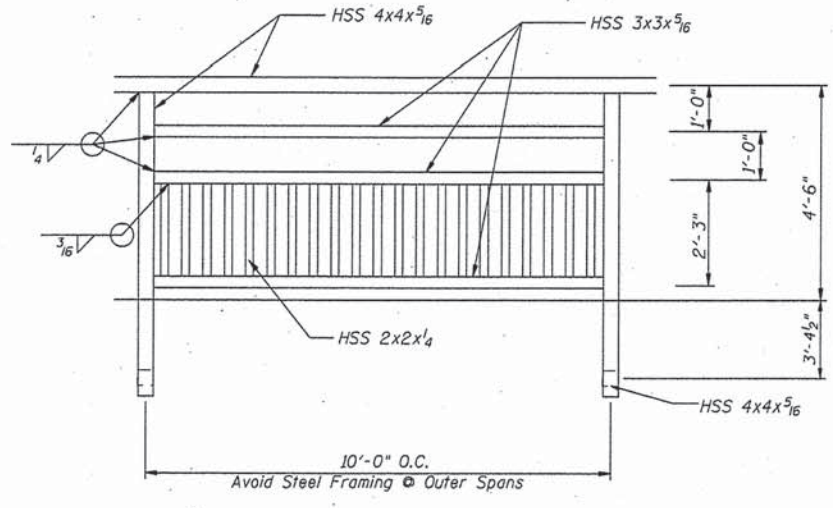
SHEET	27
DWG NO.	13028sup.dgn
DATE	JUL 2015
PROJ NO.	C13028

SECTION	COUNTY	TOTAL SHEETS	SHEET
FAS1523	CHAMPAIGN	39	32
FED. ROAD DIST. NO. 7	ILLINOIS	FED. AID PROJECT-	

* 10-00966-00-BR
Contract No. 91526

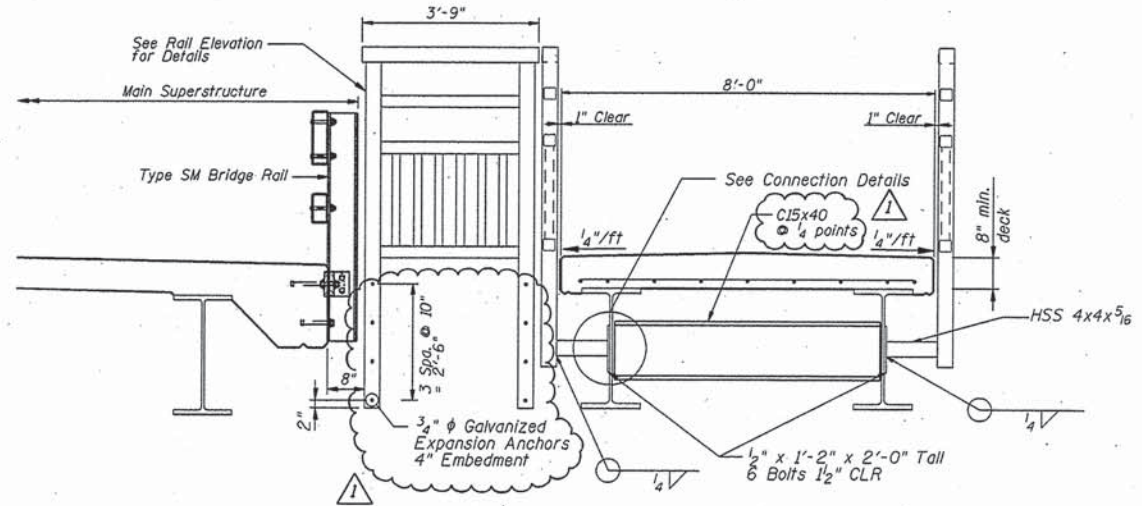


PEDESTRIAN RAILING



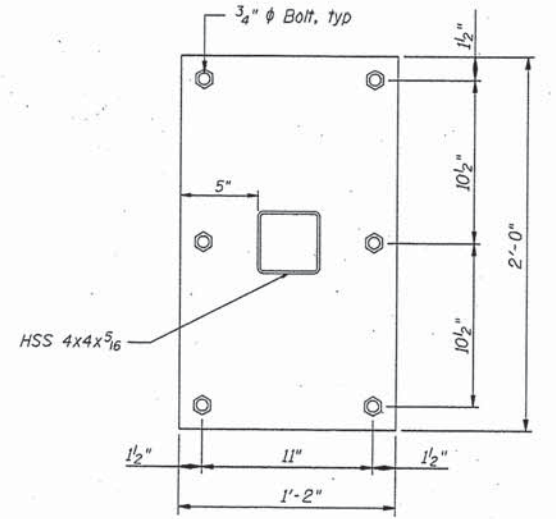
RAIL ELEVATION

Scale: 3/16" = 1'-0"



SECTION A-A

Scale: 3/16" = 1'-0"
See Steel Framing Details for Channel to Girder Connection



CONNECTION DETAIL

Scale: 3/4" = 1'-0"

BILL OF MATERIAL

Item	Unit	Quantity
Pedestrian Railing	Foot	168

REVISED	10-16-15
REVISED	-
REVISED	-
REVISED	-



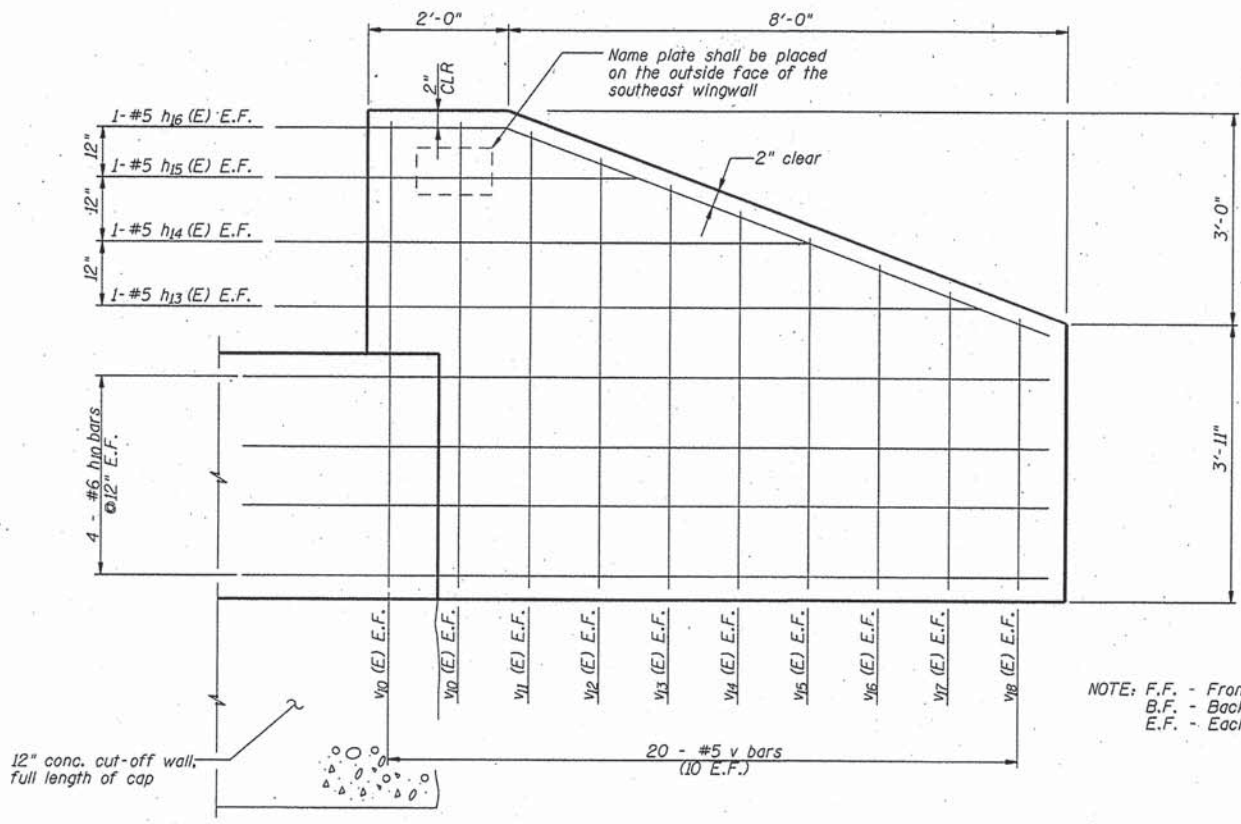
ENGINEERING RESOURCE ASSOCIATES, INC.
CONSULTING ENGINEERS, SCIENTISTS & SURVEYORS
3002 CROSSING COURT CHAMPAIGN, IL 61822
PHONE (217) 351-6268 FAX (217) 355-1902
38701 WEST AVENUE, SUITE 150 WARRENVILLE, ILLINOIS 60555
PHONE 630.393.3960, FAX 630.393.2152
10 S. RIVERSIDE PLAZA, SUITE 1800 CHICAGO, ILLINOIS 60606
PHONE 312.893.8110, FAX 312.474.6699

PEDESTRIAN BRIDGE RAILING
FAS 1523 (CH55) OVER UPPER SALT FORK
CHAMPAIGN COUNTY
SEC 10-00966-00-BR

SHEET	32
DWG NO.	13028ped.dgn
DATE	JUL 2015
PROJ NO.	C13028

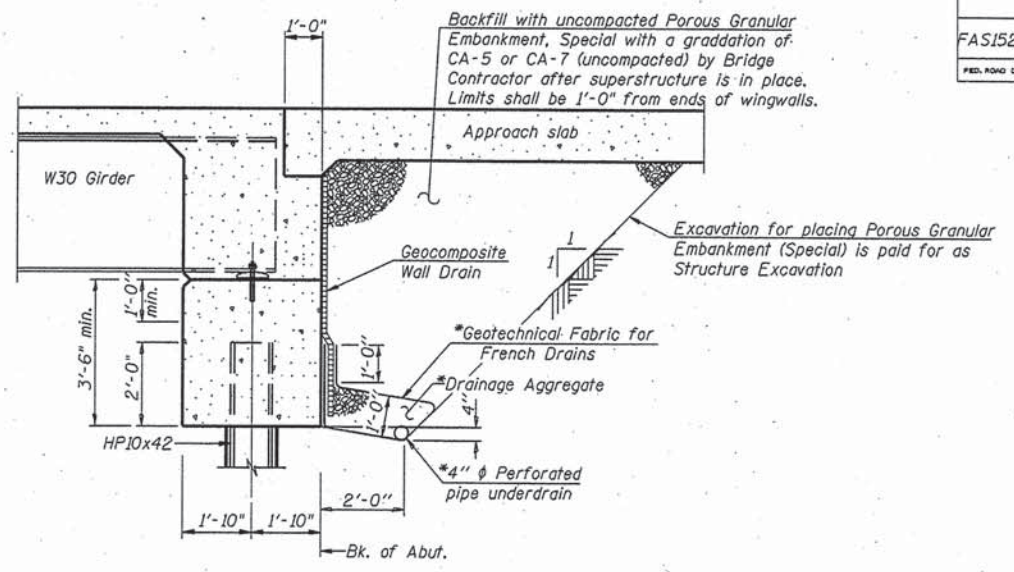
SECTION	COUNTY	TOTAL SHEETS	SHEET NO.
FAS1523	CHAMPAIGN	39	37
ILLINOIS		FED. AID PROJECT	

* 10-00966-00-BR
Contract No. 91526



WING WALL ELEVATION

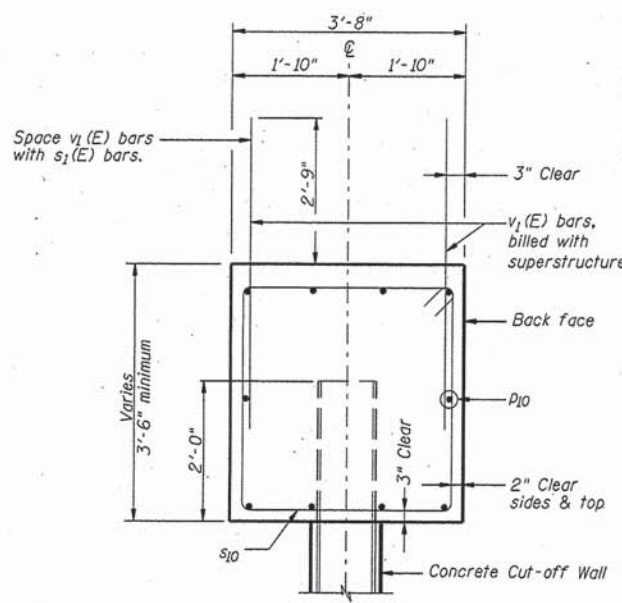
NOTE: F.F. - Front Face
B.F. - Back Face
E.F. - Each Face



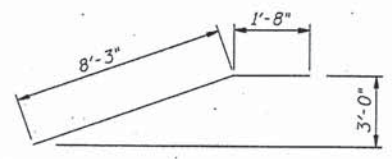
SECTION THRU INTEGRAL ABUTMENT

*Included in the cost of Pipe Underdrains for Structures 4"
(See Special Provisions)

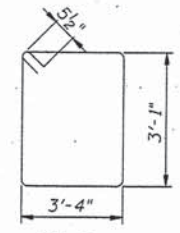
Note:
All drainage system components shall extend to 2'-0" from the end of each wingwall except an outlet pipe shall extend, turn and exit the side slopes.



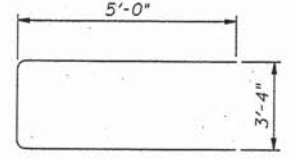
SECTION A
(Perpendicular to Q of Abutment)



BAR h16



BAR s10



BAR u10

BILL OF MATERIAL - 2 ABUTS.

Bar	No.	Size	Length	Shape
h10	32	# 6	13'-0"	—
h13 (E)	8	# 5	9'-8"	—
h14 (E)	8	# 5	7'-0"	—
h15 (E)	8	# 5	4'-4"	—
h16 (E)	8	# 5	9'-11"	—
D10	40	# 7	36'-0"	—
S10	130	# 5	13'-9"	□
U10	12	# 5	13'-4"	□
v10 (E)	16	# 5	6'-7"	—
v11 (E)	8	# 5	6'-3"	—
v12 (E)	8	# 5	5'-11"	—
v13 (E)	8	# 5	5'-6"	—
v14 (E)	8	# 5	5'-2"	—
v15 (E)	8	# 5	4'-10"	—
v16 (E)	8	# 5	4'-5"	—
v17 (E)	8	# 5	4'-0"	—
v18 (E)	8	# 5	3'-8"	—
Concrete Structures		Cu. Yds.	80.3	△
Reinforcement Bars		Lbs.	5600	
Reinforcement Bars, Epoxy Coated		Lbs.	700	
Test Pile, Steel HP10x42		Each	2	
Furnishing Steel Piles		Foot	1080	
Driving Piles		Foot	1080	
Metal Shoes		Each	26	
Name Plate		Each	1	
Concrete Cut-off Wall		Cu. Yds.	12	
Structure Excavation		Cu. Yds.	428	
Porous Granular Embankment (Special)		Cu. Yds.	157	△
Pipe Underdrains		Foot	170	
Geocomposite Wall Drain		Sq. Yds.	82.3	

REVISED	△	10-16-15
REVISED	-	
REVISED	-	
REVISED	-	



3002 CROSSING COURT
CHAMPAIGN, IL 61822
PHONE (217) 351-6268
FAX (217) 355-1902

38701 WEST AVENUE, SUITE 150 WARRENVILLE, ILLINOIS 60555
PHONE 630.393.3060, FAX 630.393.2152

10 S. RIVERSIDE PLAZA, SUITE 1800 CHICAGO, ILLINOIS 60606
PHONE 312.683.0110, FAX 321.474.6099

ABUTMENT DETAILS (SHEET 2 of 3)

FAS 1523 (CH55) OVER UPPER SALT FORK
CHAMPAIGN COUNTY
SEC 10-00966-00-BR

SHEET	37
DWG NO.	13028abut.dgn
DATE	JUL 2015
PROJ NO.	C13028