

STATE OF ILLINOIS
DEPARTMENT OF TRANSPORTATION
DIVISION OF HIGHWAYS

**PROPOSED
HIGHWAY PLANS**

F.A.I. ROUTE 80/94: I-80/94 (KINGERY EXPY)

EAST OF IL 83 (TORRENCE AVE)

SECTION: 2015-0531

NOISE BARRIERS

COOK COUNTY

C-91-389-15

F.A. RTE.	SECTION	COUNTY	TOTAL SHEETS	SHEET NO.
80/94	2015-0531	COOK	11	1
		ILLINOIS	CONTRACT NO. 62B14	

*11+2 = 13

D-91-389-15



FOR INDEX OF SHEETS, SEE SHEET NO. 2

IMPROVEMENT IS LOCATED IN THE VILLAGE OF LANSING, TORNTON TOWNSHIP

TRAFFIC DATA I 80 /94

2014 ADT = 143700
POSTED SPEED LIMIT = 55 MPH

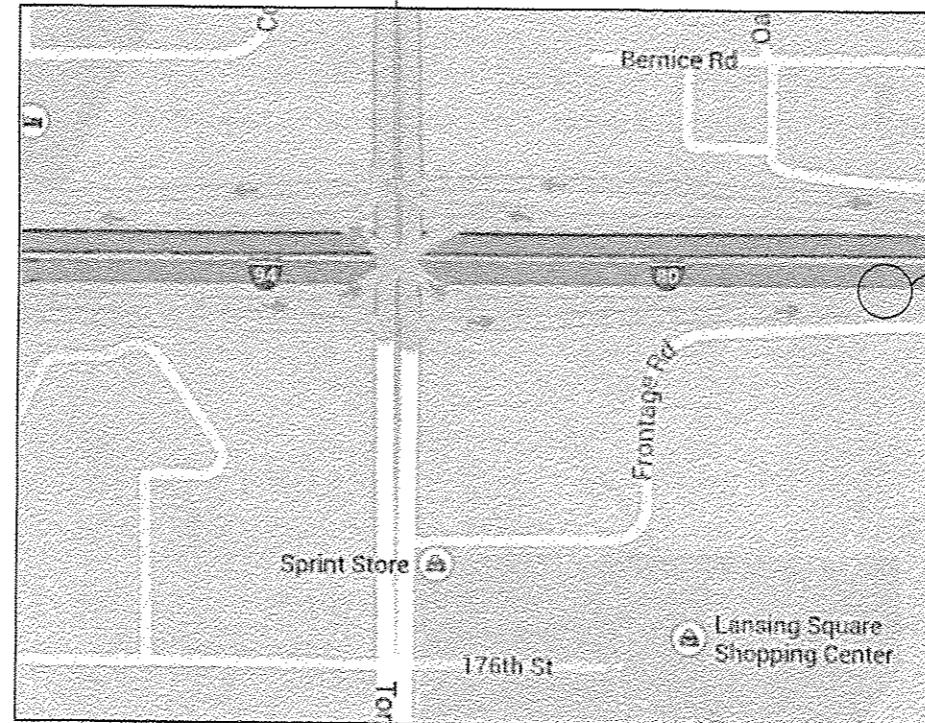
J.U.L.I.E.
JOINT UTILITY LOCATION INFORMATION FOR EXCAVATION
1-800-892-0123
OR 811

PROJECT ENGINEER: MIDY, J. ALAIN (847) 221-3056
PROJECT MANAGER: ISSAM RAYYAN (847) 705-4178

CONTRACT NO. 62B14

T 36 N

R 14 E R 15 E



I-80 EB EAST OF TORRENCE AVE. RIGHT SIDE.



STATE OF ILLINOIS
DEPARTMENT OF TRANSPORTATION
DIVISION OF HIGHWAYS

SUBMITTED August 11 20 15
John F. [Signature]
DEPUTY DIRECTOR OF HIGHWAYS, REGION ENGINEER

Oct 2 20 15
John D. Baranzelli, PE
ENGINEER OF DESIGN AND ENVIRONMENT

Oct 2 20 15
Omer Esmam, PE
DIRECTOR OF HIGHWAYS, CHIEF ENGINEER

PRINTED BY THE AUTHORITY OF THE STATE OF ILLINOIS

INDEX OF SHEETS

SHEET NO.	DESCRIPTION
1.	TITLE SHEET
2.	INDEX OF SHEETS, STATE STANDARDS AND GENERAL NOTES
3.	SUMMARY OF QUANTITIES
4.	NOISE BARRIER WALL LOCATION
5.	NOISE BARRIER WALL REPAIR DETAILS
6-7.	EXISTING NOISE ABUTMENT WALL DETAILS
8.	FREWAY ENTRANCE AND EXIT RAMP CLOSURE DETAILS (TC-08)
9-9A.	MULTI-LANE FREEWAY PAVEMENT MARKING DETAIL (TC-12)
10.	TRAFFIC CONTROL DETAILS FOR FREEWAY SHOULDER CLOSURES AND PARTIAL RAMP CLOSURES (TC-17)
11A.	SIGNING FOR FLAGGING OPERATIONS AT WORK ZONE OPENINGS (TC-18)
11.	ARTERIAL ROAD INFORMATION SIGN (TC-22)

STATE STANDARDS

STD NO.	DESCRIPTION
701301-04	LANE CLOSURE, 2L, 2W, SHORT TIME OPERATIONS
701400-08	APPROACH TO LANE CLOSURE, FREEWAY/EXPRESSWAY
701401-09	LANE CLOSURE, FREEWAY/EXPRESSWAY
701411-09	LANE CLOSURE, MULTILANE, AT ENTRANCE OR EXIT RAMP, FOR SPEEDS > 45 MPH
701428	TRAFFIC CONTROL SETUP AND REMOVAL FREEWAY/EXPRESSWAY
701501-06	URBAN LANE CLOSURE, 2L, 2W, UNDIVIDED
701901-04	TRAFFIC CONTROL DEVICES

GENERAL NOTES

THE CONTRACTOR SHALL COORDINATE CONSTRUCTION ACTIVITIES WITH UTILITY COMPANIES, AND THE VILLAGE OF LANSING.

THE CONTRACTOR WILL NOT BE ALLOWED TO SET UP A YARD OR FIELD OFFICE ON STATE PROPERTY WITHOUT WRITTEN PERMISSION FROM THE DEPARTMENT.

THE CONTRACTOR SHALL CONTACT THE DISTRICT ONE TRAFFIC CONTROL SUPERVISOR AT (847)705-4470 (FOR ARTERIALS) AND (847)705-4151 (FOR EXPRESSWAYS) A MINIMUM OF 72 HOURS IN ADVANCE OF BEGINNING WORK.

THESE PLANS HAVE BEEN PREPARED FROM NOTES RECEIVED FROM THE BUREAU OF MAINTENANCE.

THE CONTRACTOR SHALL BE REQUIRED TO PROVIDE ACCESS TO ABUTTING PROPERTY AT ALL TIMES DURING THE CONSTRUCTION OF THIS PROJECT.

DO NOT SCALE PLANS FOR CONSTRUCTION DIMENSIONS.

THE "ARTERIAL ROAD INFORMATION SIGN (TC-22)" IS APPLICABLE ONLY TO ARTERIAL ROADS AND SHALL NOT BE APPLIED TO EXPRESSWAYS.

EXISTING REINFORCEMENT BARS EXTENDING INTO REMOVAL AREA SHALL BE CLEANED, STRAIGHTENED AND INCORPORATED INTO THE NEW CONSTRUCTION. ANY REINFORCEMENT BARS THAT ARE DAMAGED DURING CONCRETE REMOVAL SHALL BE REPLACED WITH AN APPROVED BAR SPLICER OR ANCHORAGE SYSTEM. COST INCLUDED WITH CONCRETE REMOVAL.

PLAN DIMENSIONS AND DETAILS RELATIVE TO EXISTING PLANS ARE SUBJECT TO ROUTINE VARIATIONS. THE CONTRACTOR SHALL FIELD VERIFY EXISTING DIMENSIONS AND DETAILS AFFECTING NEW CONSTRUCTIONS AND MAKE NECESSARY APPROVED ADJUSTMENT PRIOR TO CONSTRUCTION OR ORDERING OF MATERIALS. SUCH VARIATIONS SHALL NOT BE CAUSE FOR ADDITIONAL COMPENSATION FOR A CHANGE IN SCOPE OF THE WORK. HOWEVER, THE CONTRACTOR WILL BE PAID FOR THE QUANTITY ACTUALLY FURNISHED BASED UPON THE UNUT PRICE BID FOR THE WORK.

RESTORATION OF ANY SOIL DISTURBANCE CAUSED BY EQUIPMENT SHALL BE INCLUDED IN THE COST OF THE "NOISE ABATEMENT WALL REPAIRS"

FILE NAME *	USER NAME : gorangeulob	DESIGNED -	REVISED -	STATE OF ILLINOIS DEPARTMENT OF TRANSPORTATION	GENERAL NOTES	F.A.I. RTE.	SECTION	COUNTY	TOTAL SHEETS	SHEET NO.	
C:\Users\jdot\Documents\Projects\013015\013015-shr-plan.dgn						REVISED -	80/94	2015-0531	COOK	11	2
PLOT SCALE * 5000.0000 ' / in						CHECKED -	CONTRACT NO. 62B14				
PLOT DATE * 8/25/2015						REVISED -					
DATE -						REVISED -	SCALE:	SHEET	OF	SHEETS	STA.

SUMMARY OF QUANTITIES			URBAN		CONSTRUCTION TYPE CODE 0040					SUMMARY OF QUANTITIES			CONSTRUCTION TYPE CODE						
CODE NO	ITEM	UNIT	TOTAL QUANTITIES	100% STATE 0040						CODE NO	ITEM	UNIT	TOTAL QUANTITIES						
50102400	CONCRETE REMOVAL	CU YD	1.5	1.5															
50300225	CONCRETE STRUCTURES	CU YD	1.5	1.5															
67100100	MOBILIZATION	LSUM	1	1															
70102620	TRAFFIC CONTROL AND PROTECTION, STANDARD 701501	LSUM	1	1															
70106800	CHANGEABLE MESSAGE SIGN	CAL MO	0.5	0.5															
70200100	NIGHTTIME WORK ZONE LIGHTING	LSUM	1	1															
X0326791	NOISE ABATEMENT WALL REPAIRS	LSUM	1	1															
X7011015	TRAFFIC CONTROL AND PROTECTION (EXPRESSWAYS)	LSUM	1	1															
Z0030850	TEMPORARY INFORMATION SIGNING	SQ FT	51.4	51.4															



**PRECAST CONCRETE WALL
REPLACE 23'-4" OF WALL**



PILASTERS TO BE REPAIRED
(SEE SHEET #5 FOR DETAILS AND LOCATION)



BILL OF MATERIALS

ITEM	UNIT	QUANTITY
NOISE ABATEMENT WALL REPAIR	LUMP SUM	1
CONCRETE REMOVAL	CU YD	1.5
CONCRETE STRUCTURES	CU YD	1.5

NOTES:

COST OF THE POST AND ALL STEEL REQUIRED FOR POST INSTALLATION AS WELL AS PRECAST CONCRETE PANELS ARE INCLUDED IN THE COST OF "NOISE ABATEMENT WALL REPAIR". AREA OF REPAIR IS 356 SQ. FT.

TEMPORARY REMOVAL AND REINSTALLATION OF EXISTING METAL POST AND PANELS ARE INCLUDED IN "NOISE ABATEMENT WALL REPAIRS"

COST OF ANCHOR ROD ASSEMBLY IS INCLUDED WITH "CONCRETE STRUCTURES"

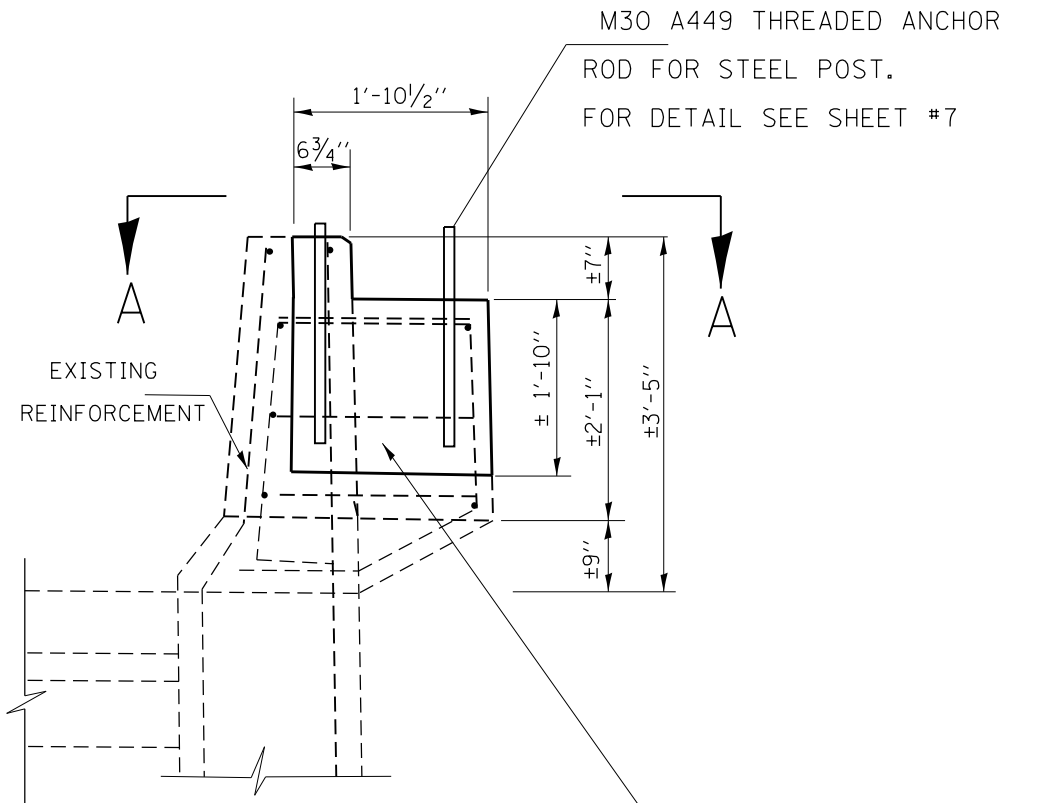
FILE NAME =	USER NAME = gorengautob	DESIGNED -	REVISED -
pw\11084EBIDINTEG\illinois.gov\PWIDOT\Documents\DOT Offices\District 1\Projects\DI38915\Drawings\Design\DI38915-sht-plen.dgn		CHECKED -	REVISED -
Default	PLOT SCALE = 5000.0000' / in.	DATE -	REVISED -
	PLOT DATE = 8/24/2015		

**STATE OF ILLINOIS
DEPARTMENT OF TRANSPORTATION**

**PRECAST CONCRETE WALL. I-80 EB EAST OF TORRENCE AVE, RIGHT SIDE
NOISE BARRIER WALL LOCATION.**

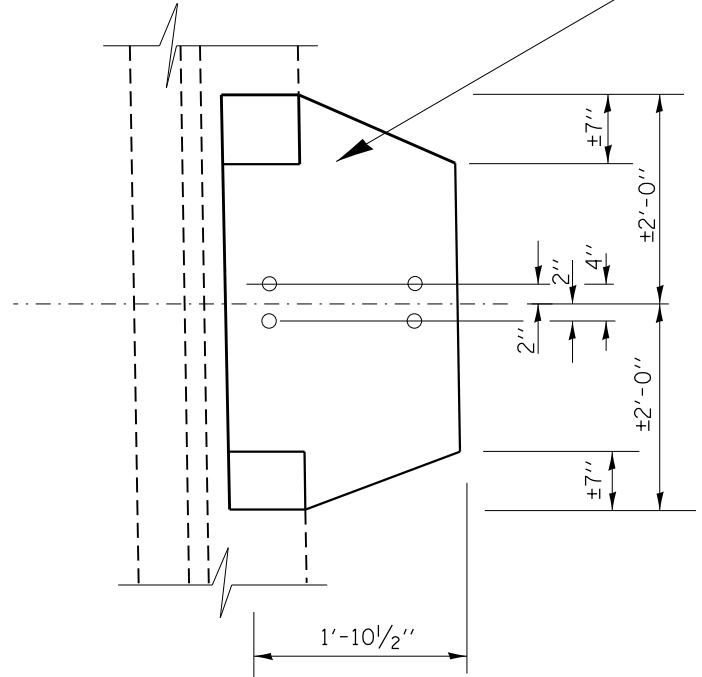
SCALE: SHEET 1 OF 4 SHEETS STA. TO STA.

F.A.I. RTE.	SECTION	COUNTY	TOTAL SHEETS	SHEET NO.
80/94	2015-053I	COOK	11	4
ILLINOIS FED. AID PROJECT			CONTRACT NO. 62B14	

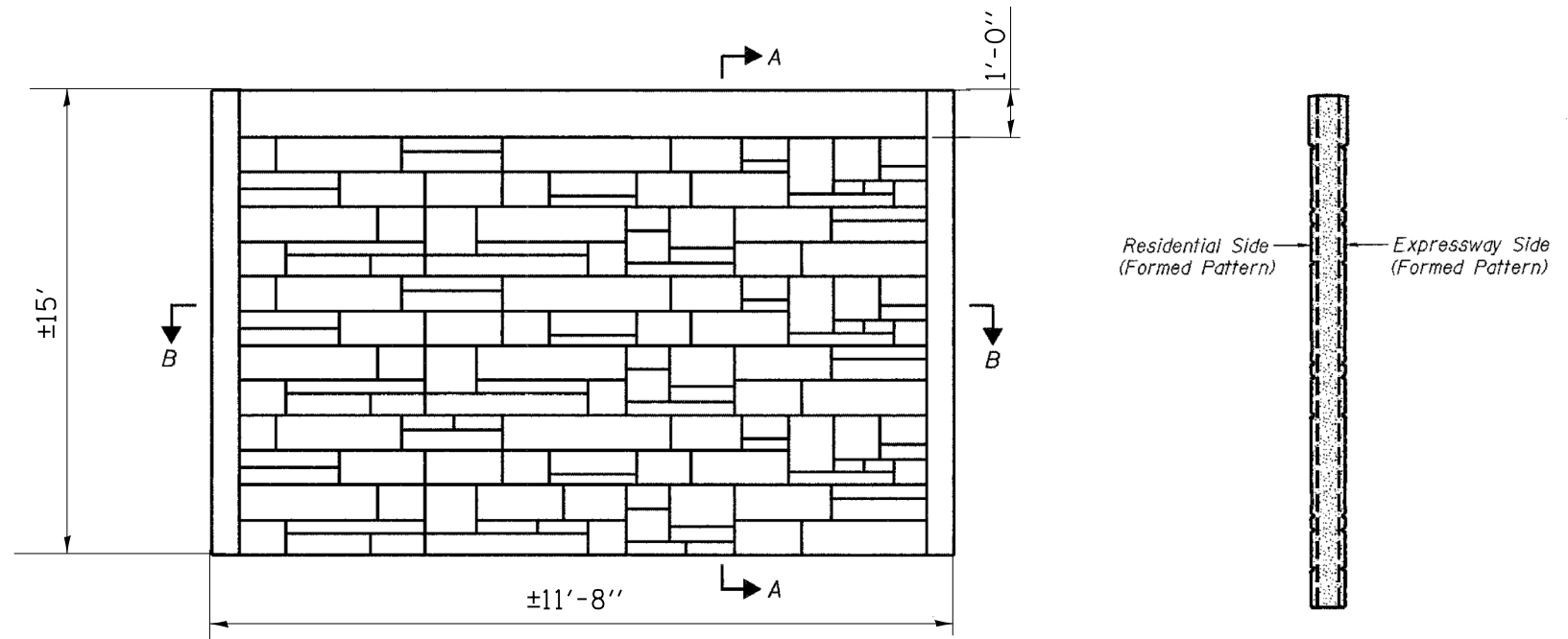


PILASTER REPAIR

CONCRETE REMOVAL AND CONCRETE STRUCTURES

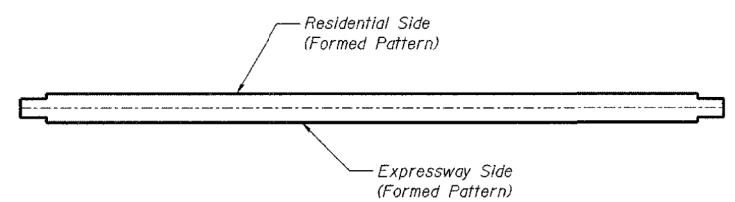


SECTION A—A

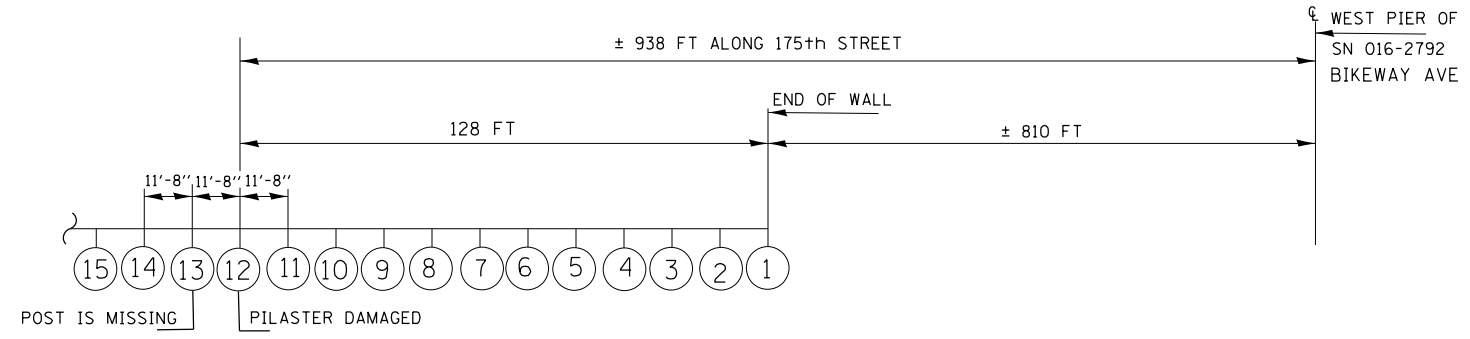


FORMED ASHLAR STONE PATTERN
(Absorptive Panel - Expressway Side only)
(Precast Panel - Expressway & Residential Sides)

SECTION A-A THRU PRECAST PANEL



SECTION B-B THRU PRECAST PANEL



LOCATION SCETCH

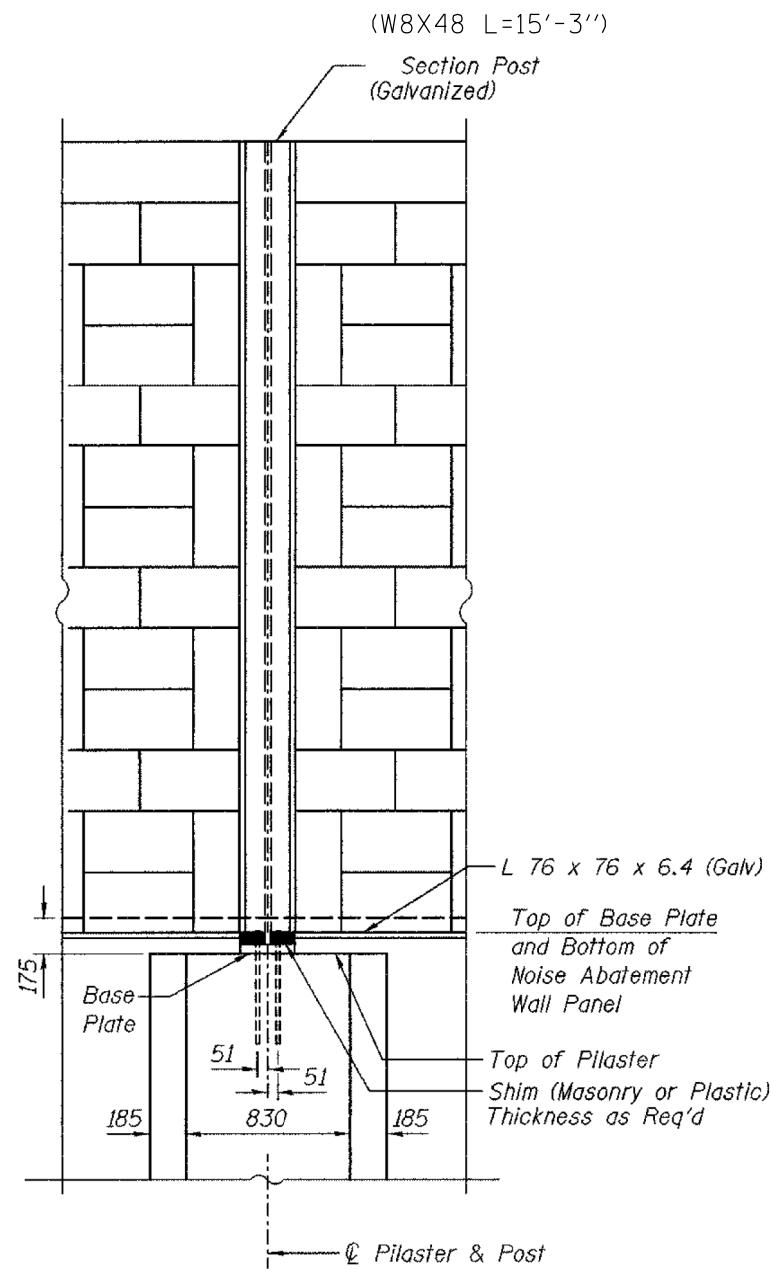
FILE NAME =	USER NAME = gorengautab	DESIGNED -	REVISED -
pw\11084EBIDINTEG\Illinois.gov\PWIDOT\Documents\DOT Offices\District 1\Projects\DI38915\Design\DI38915-sht-plen.dgn		REVISED -	REVISED -
Default	PLOT SCALE = 5000.0000' / in.	CHECKED -	REVISED -
	PLOT DATE = 8/24/2015	DATE -	REVISED -

**STATE OF ILLINOIS
DEPARTMENT OF TRANSPORTATION**

**PRECAST CONCRETE WALL. I-80 EB EAST OF TORRENCE AVE, RIGHT SIDE
NOISE BARRIER WALL REPAIR DETAILS.**

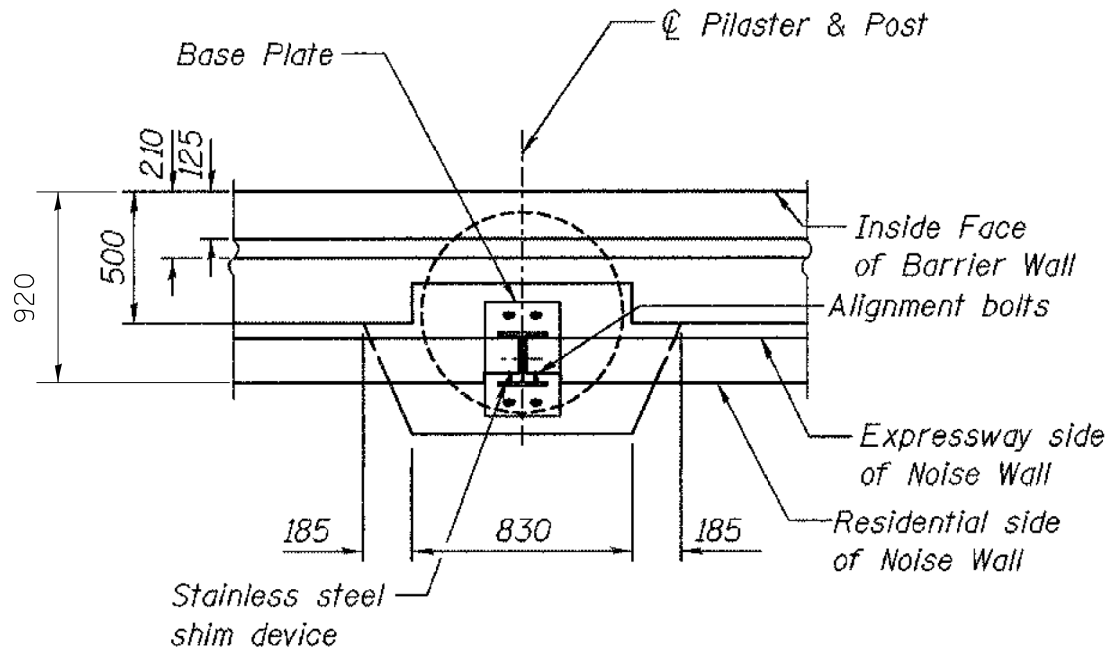
SCALE: SHEET 1 OF 4 SHEETS STA. TO STA.

F.A.I. RTE. 80/94	SECTION 2015-053I	COUNTY COOK	TOTAL SHEETS 11	SHEET NO. 5
			CONTRACT NO. 62B14	
ILLINOIS FED. AID PROJECT				

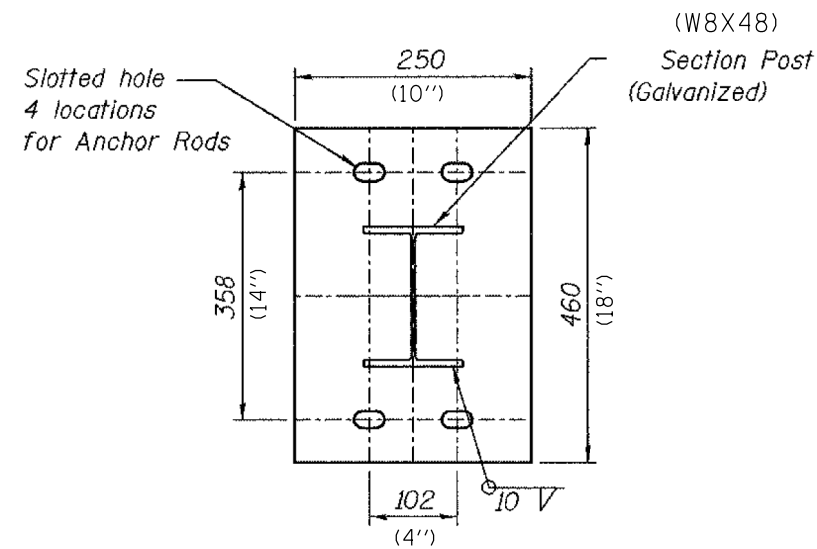


STEEL POST (NO STEP)

(Looking @ Residential Side)



PLAN



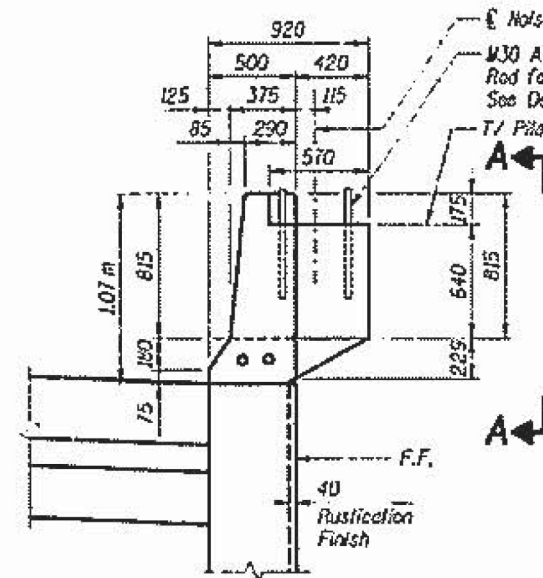
BASE PLATE FOR STEEL POST

(Galvanized)

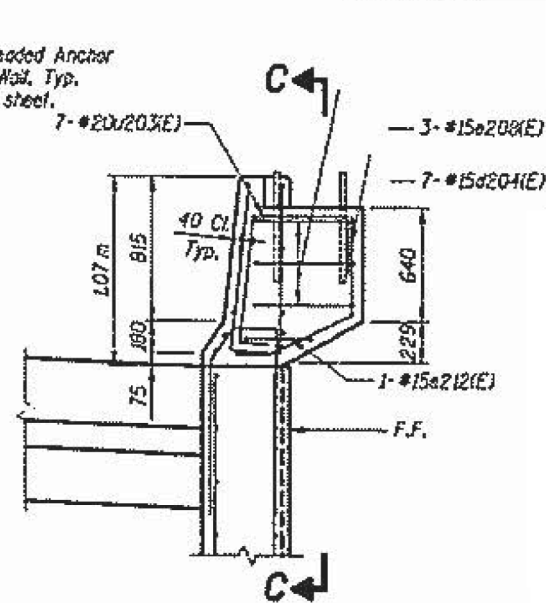
DIMENSIONS ON THE SHEET ARE IN MILLIMETERS.
DIMENSIONS IN PARENTHESIS ARE IN FT-IN.

FOR INFORMATION ONLY

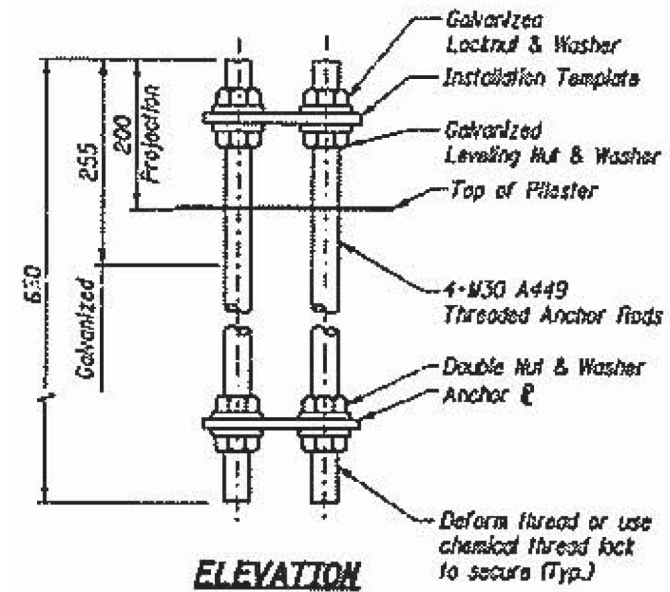
FILE NAME =	USER NAME = gorengautob	DESIGNED -	REVISED -	STATE OF ILLINOIS DEPARTMENT OF TRANSPORTATION	PRECAST CONCRETE WALL. I-80 EB EAST OF TORRENCE AVE, RIGHT SIDE EXISTING NOISE WALL DETAILS	F.A.I. RTE.	SECTION	COUNTY	TOTAL SHEETS	SHEET NO.
pw\11084EBIDINTEG\illinois.gov\PIWIDOT\Documents\DOT Offices\District 1\Projects\DI38915\Design\DI38915-shr-plan.dgn		CHECKED -	REVISED -			80/94	2015-0531	COOK	11	6
PLOT SCALE = 5000.0000 / in.		DATE -	REVISED -			CONTRACT NO. 62B14				
Default	PLOT DATE = 8/24/2015					ILLINOIS FED. AID PROJECT				
					SCALE:	SHEET 1 OF 4 SHEETS		STA.	TO STA.	



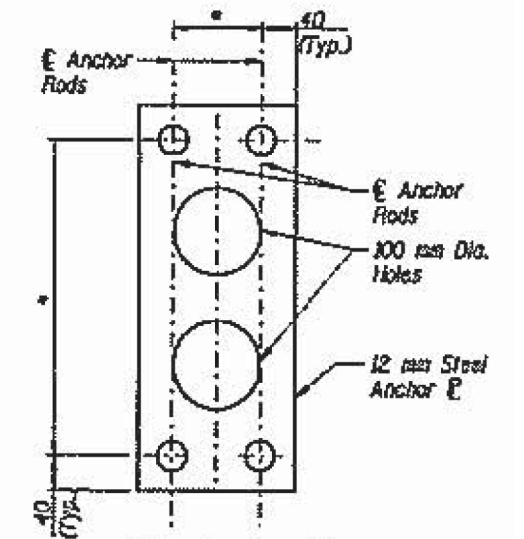
TRAFFIC BARRIER W/PILASTER



TRAFFIC BARRIER W/PILASTER
(Showing Reinforcement)

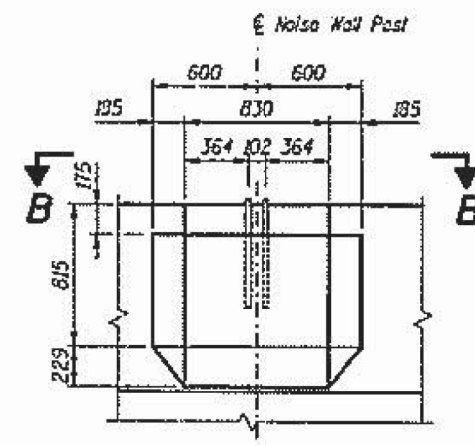


ELEVATION

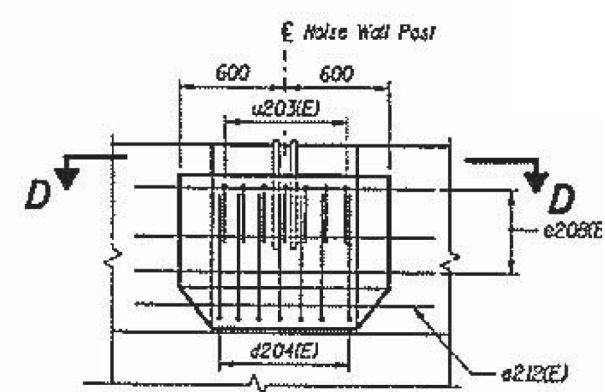


PLAN

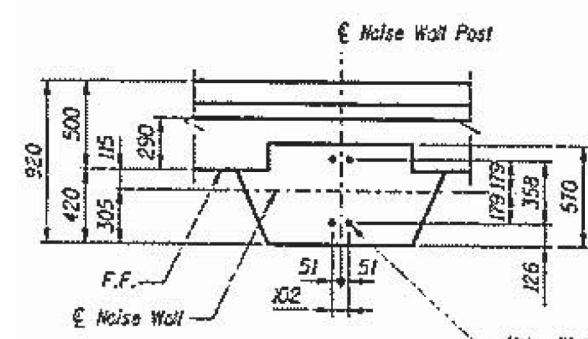
NOISE ABATEMENT WALL ANCHOR ROD ASSEMBLY
(1/6 Required)



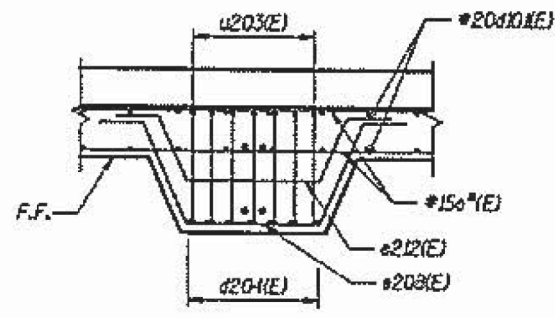
ELEVATION A-A



SECTION C-C



PLAN B-B

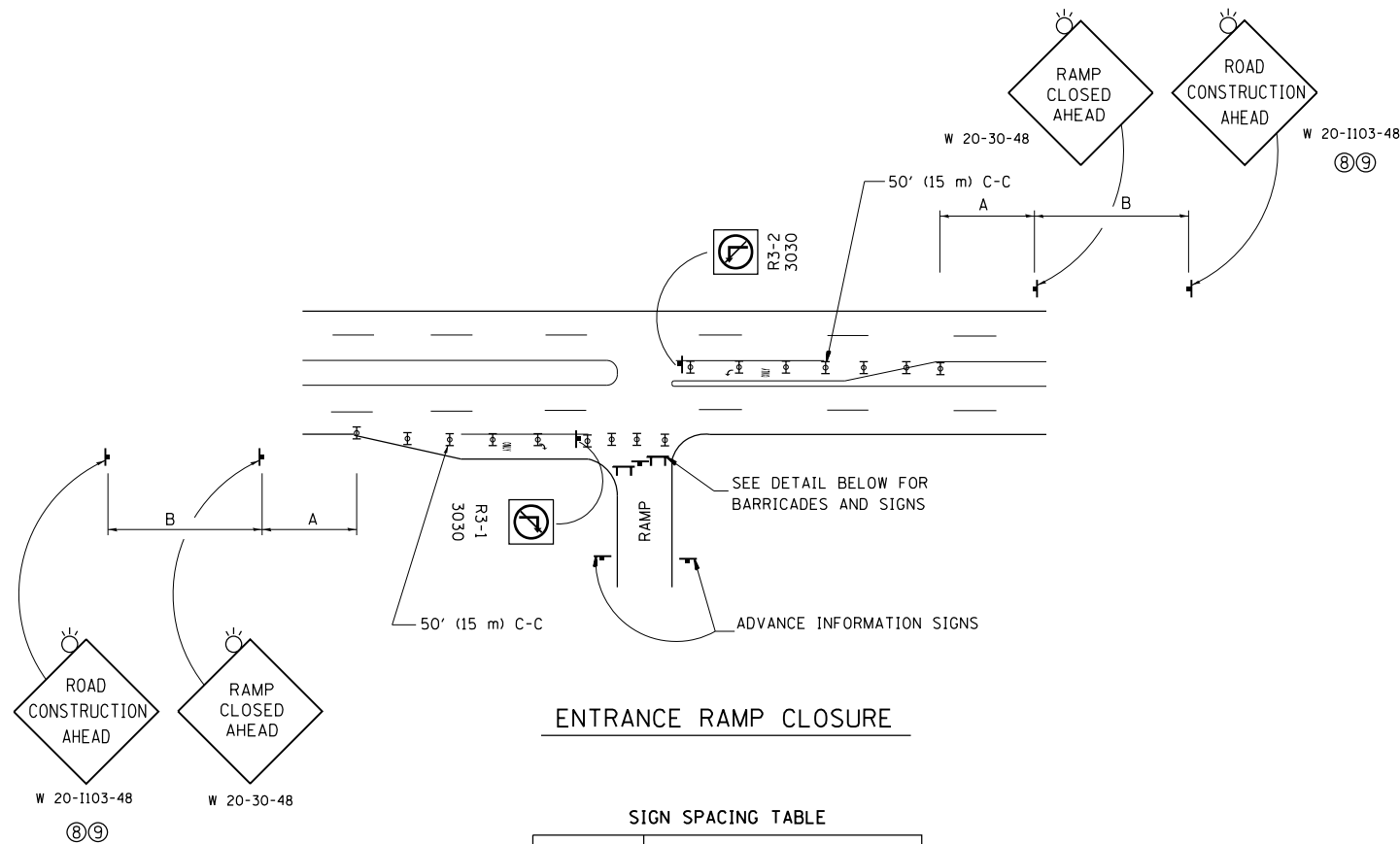


SECTION D-D

DIMENSIONS ON THE SHEET ARE IN MILLIMETERS.

FOR INFORMATION ONLY

FILE NAME =	USER NAME = gorengautob	DESIGNED -	REVISED -	STATE OF ILLINOIS DEPARTMENT OF TRANSPORTATION	PRECAST CONCRETE WALL. I-80 EB EAST OF TORRENCE AVE, RIGHT SIDE	F.A. RTÉ.	SECTION	COUNTY	TOTAL SHEETS	SHEET NO.	
pw\11\084EBIDINTEG.11\inois.gov\PIWIDTDocuments\100T Offices\District 1\Projects\DI389\Drawings\Design\DI38915-sh-t-pln.dgn		CHECKED -	REVISED -			80/94	2015-0531	COOK	11	7	
Default		DATE -	REVISED -			CONTRACT NO. 62B14					
	PLOT DATE = 8/24/2015					SCALE:	SHEET	OF	SHEETS	STA.	TO

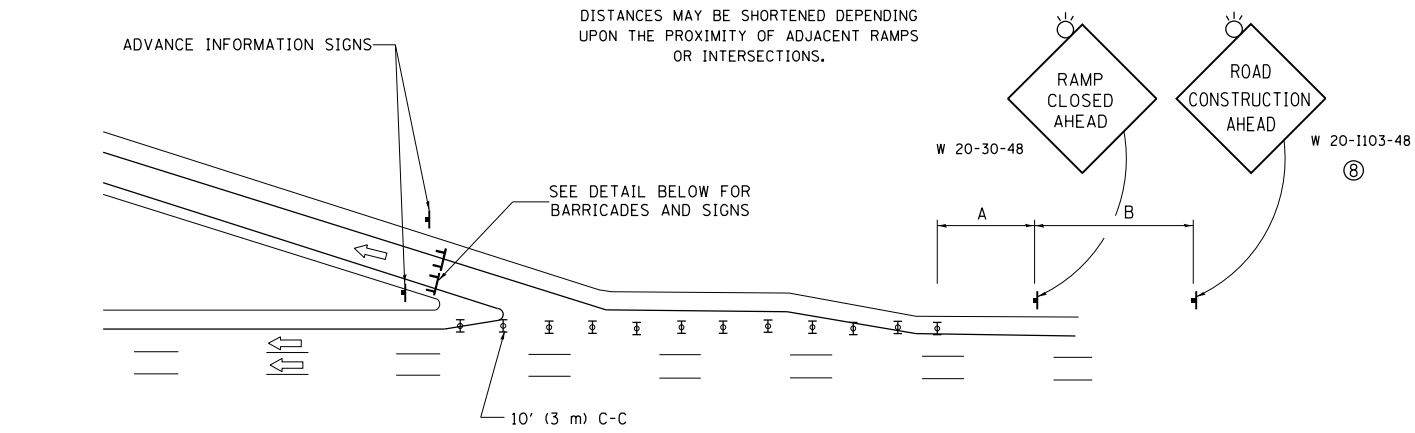


ENTRANCE RAMP CLOSURE

SIGN SPACING TABLE

FACILITY	DISTANCE BETWEEN SIGNS	
	A	B
EXPRESSWAY >24 HOURS	1000' (300 m)	1500' (450 m)
EXPRESSWAY <24 HOURS	500' (150 m)	500' (150 m)
ARTERIAL 55 MPH	500' (150 m)	500' (150 m)
ARTERIAL 50-45 MPH	350' (100 m)	350' (100 m)
ARTERIAL <45 MPH	200' (60 m)	200' (60 m)

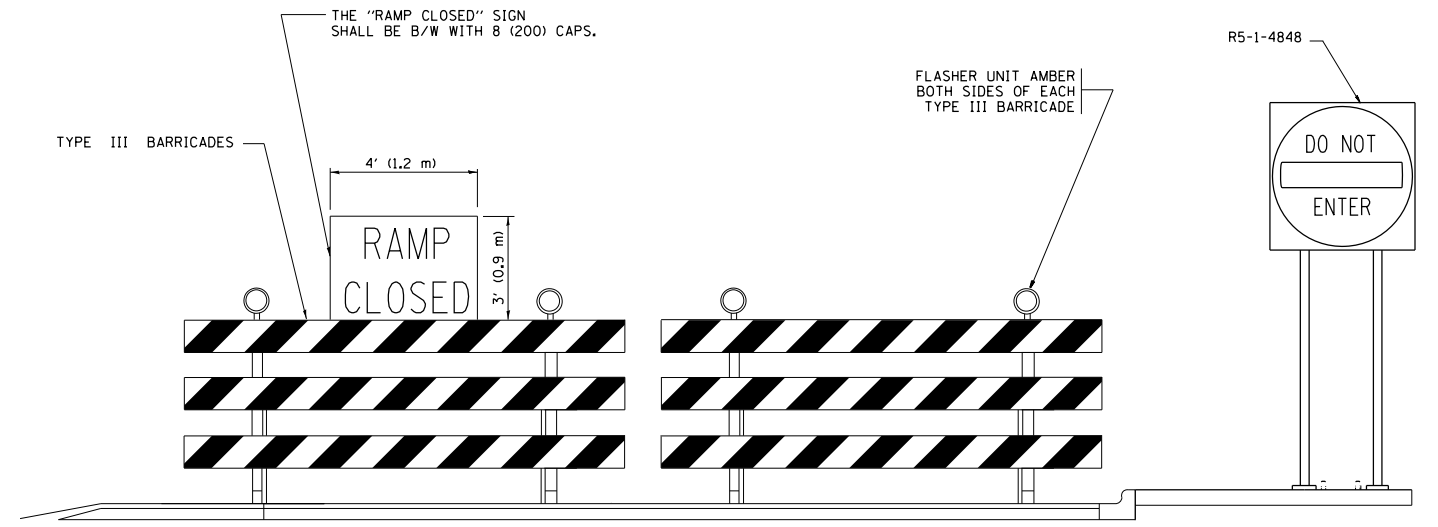
DISTANCES MAY BE SHORTENED DEPENDING UPON THE PROXIMITY OF ADJACENT RAMPS OR INTERSECTIONS.



EXIT RAMP CLOSURE

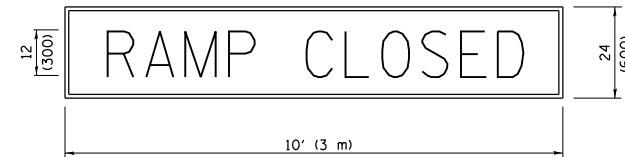
SYMBOLS

- ⊥ TYPE II BARRICADE OR DRUM WITH STEADY BURN MONO-DIRECTIONAL LIGHT
- ⊓ TYPE III BARRICADE WITH 2 FLASHING LIGHTS



DETAIL FOR REQUIRED BARRICADES & SIGNS

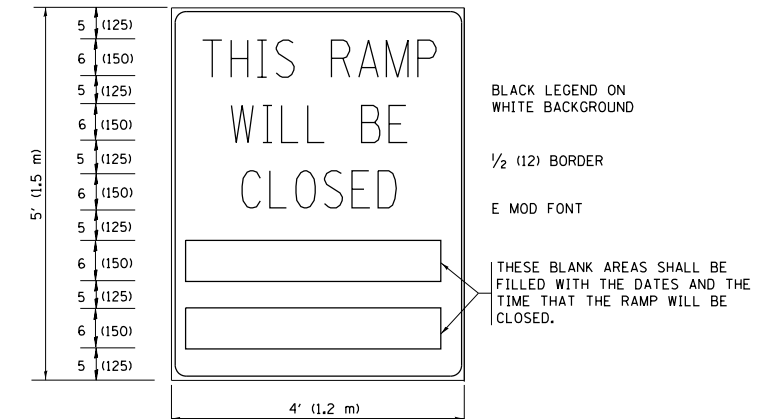
RAMP CLOSURE ADVANCE WARNING SIGN



BLACK LEGEND ON ORANGE BACKGROUND MOUNTED DIAGONALLY
E MOD FONT
1 (25) BORDER

THESE SIGNS ARE REQUIRED ON ALL THE EXIT GUIDE SIGNS FOR EXIT RAMPS THAT WILL BE CLOSED FOR MORE THAN FOUR (4) CONSECUTIVE DAYS.

RAMP CLOSURE ADVANCE INFORMATION SIGN



BLACK LEGEND ON WHITE BACKGROUND

1/2 (12) BORDER

E MOD FONT

THESE BLANK AREAS SHALL BE FILLED WITH THE DATES AND THE TIME THAT THE RAMP WILL BE CLOSED.

THESE SIGNS ARE REQUIRED ON BOTH SIDES OF THE RAMP, MINIMUM OF 1 WEEK IN ADVANCE OF THE CLOSURE.

THESE SIGNS SHALL BE FABRICATED AND PAID FOR ACCORDING TO THE TEMPORARY INFORMATION SIGNING SPECIAL PROVISION

GENERAL NOTES:

- ① CONES MAY BE SUBSTITUTED FOR DRUMS OR TYPE II BARRICADES DURING DAY OPERATIONS. CONES SHALL BE A MINIMUM OF 28 (700) HIGH.
- ② STEADY BURN LIGHTS WILL NOT BE REQUIRED FOR DAY OPERATIONS.
- ③ A FLAGGER SHALL BE POSITIONED AT EACH CLOSED RAMP THAT IS OPEN TO CONSTRUCTION VEHICLES, PRECEDED BY A W20-7 FLAGGER WARNING SIGN.
- ④ ALL ROUTE MARKERS AND TRAILBLAZER ASSEMBLIES WHICH DIRECT MOTORISTS TO A CLOSED ENTRANCE RAMP SHALL BE COVERED WHEN THE RAMP IS CLOSED FOR MORE THAN FOUR (4) DAYS.
- ⑤ THE SIGNING AND BARRICADING WHICH IS REQUIRED BY THIS DETAIL SHALL BE INCLUDED IN THE COST OF TRAFFIC CONTROL AND PROTECTION (EXPRESSWAYS).
- ⑥ AUTHORIZATION FROM THE DISTRICT'S BUREAU OF TRAFFIC IS REQUIRED FOR ALL RAMP CLOSURES.
- ⑦ THE RAMP CLOSURE ADVANCE INFORMATION SIGNS SHALL BE ERECTED IF THE CLOSURE TIME EXCEEDS TWENTY-FOUR (24) HOURS. ADDITIONAL ADVANCE WARNING SIGNS ON EXIT GUIDE SIGNING WILL BE REQUIRED FOR EXIT RAMP CLOSURES THAT EXCEED FOUR (4) DAYS IN LENGTH.
- ⑧ ROAD CONSTRUCTION AHEAD SIGNS MAY BE OMITTED WHEN THIS DETAIL IS USED IN CONJUNCTION WITH OTHER TRAFFIC CONTROL THAT ALREADY INCLUDES A ROAD CONSTRUCTION AHEAD SIGN.
- ⑨ ARTERIAL ROAD CONSTRUCTION AHEAD SIGNS SHALL BE INSTALLED ON THE LEFT SIDE OF TRAFFIC IF THE MEDIAN IS MORE THAN 10 FT WIDE.

ALL DIMENSIONS ARE IN INCHES (MILLIMETERS) UNLESS OTHERWISE SHOWN.

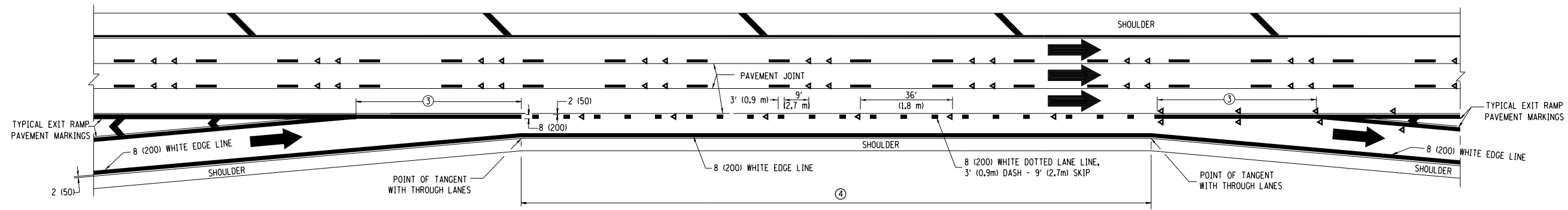
FILE NAME =	USER NAME = gorengautob	DESIGNED - DWS	REVISED - JAF 02-06
p:\1\084EBIDINTEG.illinois.gov\PIWIDOT\Documents\IDOT Offices\District 1\Projects\1389\Drawings\Design\DistStd.dgn		CHECKED -	REVISED - SPB 01-07
		DATE - 02-83	REVISED - SPB 12-09
			REVISED - MD 06-13

**STATE OF ILLINOIS
DEPARTMENT OF TRANSPORTATION**

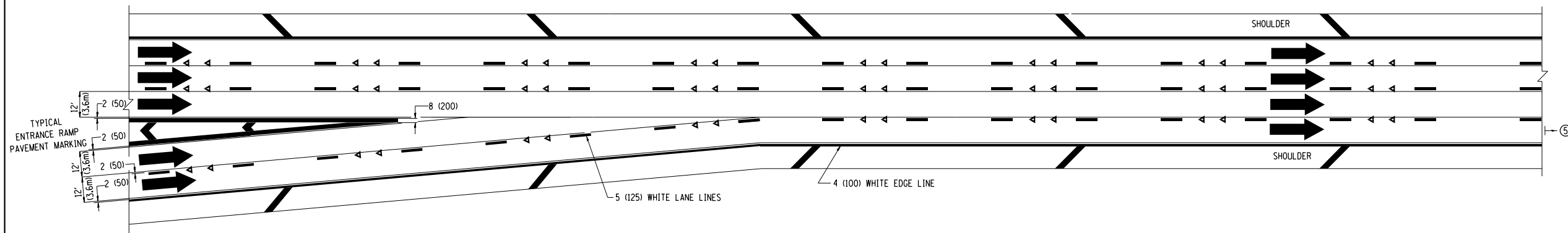
**ENTRANCE AND EXIT RAMP
CLOSURE DETAILS**

SCALE: NONE SHEET NO. 1 OF 1 SHEETS STA. TO STA.

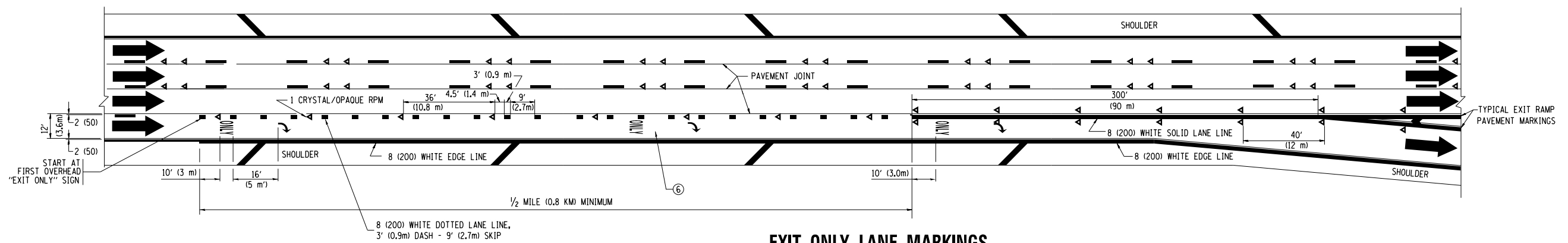
F.A.I. R.T.E. 80/94	SECTION 2015-053I	COUNTY COOK	TOTAL SHEETS 11	SHEET NO. 8
TC-08		CONTRACT NO. 62B14		
FED. ROAD DIST. NO. 1 ILLINOIS FED. AID PROJECT				



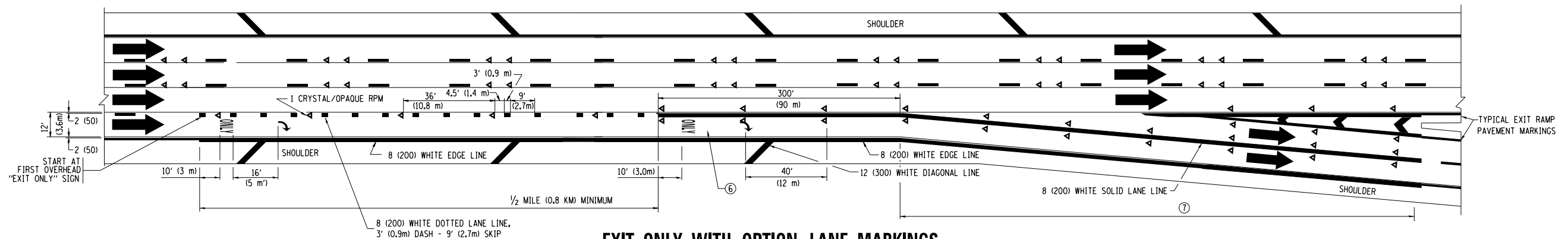
AUXILIARY LANE MARKINGS



TWO LANE ENTRANCE RAMP WITH MERGE MARKINGS



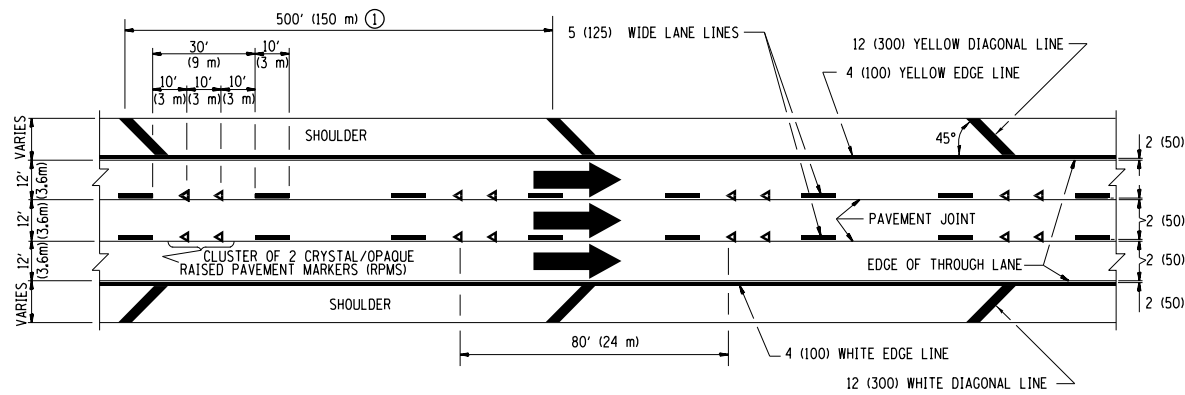
EXIT ONLY LANE MARKINGS



EXIT ONLY WITH OPTION LANE MARKINGS

- NOTES**
- ③ OMIT WHEN LENGTH OF AUXILIARY LANE IS LESS THAN 500' (150 m).
 - ④ 8-INCH WIDE DOTTED LANE LINE MARKINGS SHALL BE USED WHEN THE LENGTH OF THE AUXILIARY LANE IS 2 MILES OR LESS.
 - ⑤ FOR TWO-LANE ENTRANCE RAMP, IF RIGHT LANE ENDS, USE TYPICAL ENTRANCE RAMP PAVEMENT MARKINGS.
 - ⑥ ONLY AND ARROWS EQUALLY SPACED, 500' (150 m) MAXIMUM SPACING. FULL SIZE LETTERS AND ARROW SHALL BE USED.
 - ⑦ CONTINUE 8" SOLID LANE LINE THROUGH EXIT TO END OF PAVED GORE.

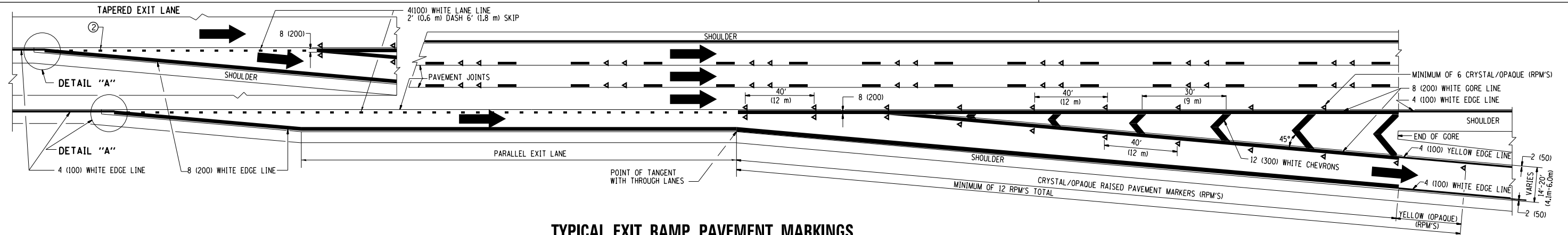
FILE NAME =	USER NAME = gorengautob	DESIGNED - D.W.S.	REVISED - D.W.S. 07-96	STATE OF ILLINOIS DEPARTMENT OF TRANSPORTATION	MULTI-LANE FREEWAY PAVEMENT MARKING DETAILS			F.A.I. RTE. 80/94	SECTION 2015-0531	COUNTY COOK	TOTAL SHEETS 11	SHEET NO. 9A
DRAWN					REVISED - J.A.F. 02-06	SCALE: NONE	SHEET NO. 2 OF 2 SHEETS	STA.	TO STA.	TC-12		CONTRACT NO. 62B14
PLOT SCALE = 100.0000' / in.					CHECKED -	REVISED - S.P.B. 01-07						
PLOT DATE = 8/24/2015					DATE - 01-90	REVISED - S.P.B. 01-10						



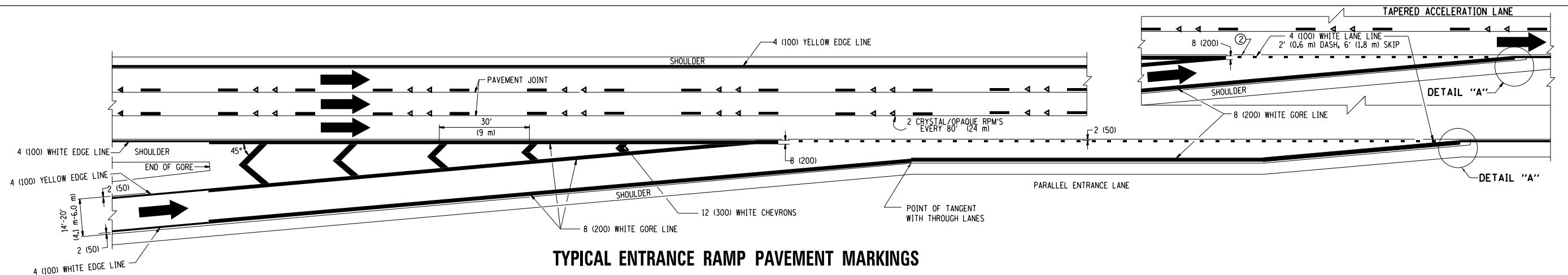
TYPICAL EDGE LINES & LANE LINES

PAVEMENT MARKING MATERIALS

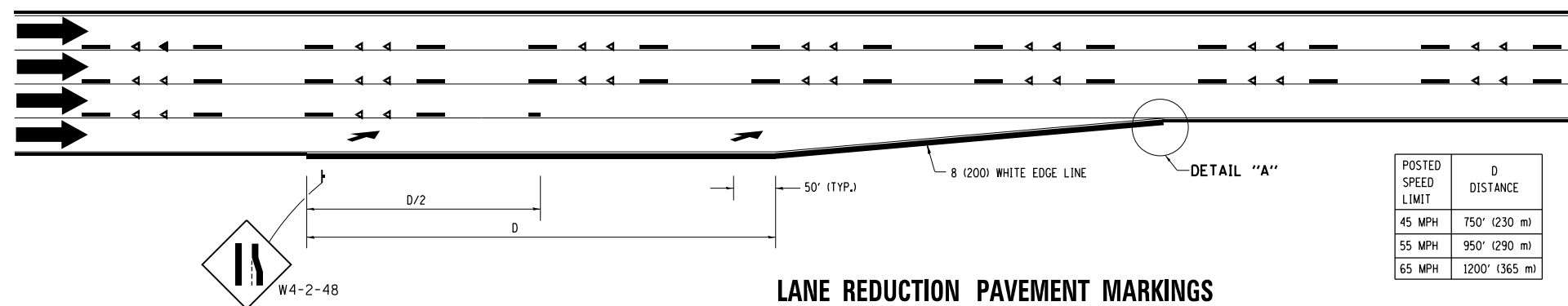
1. THERMO PLASTIC PAVEMENT MARKING LINE SHALL BE USED FOR THE EDGE LINES, GORE LINES, AND DIAGONAL LINES ON BITUMINOUS PAVEMENT ONLY.
2. PREFORMED PLASTIC TYPE B PAVEMENT MARKING LINE; INLAID OR GROOVED IN SHALL BE USED FOR ALL LANE LINES ON HMA PAVEMENT PROJECTS.
3. POLYUREA PAVEMENT MARKING SHALL BE USED FOR ALL MARKINGS ON PCC PROJECTS.



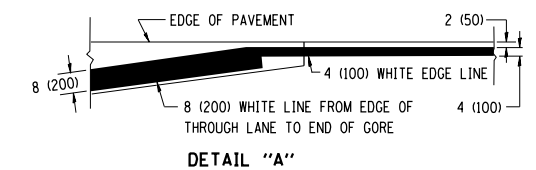
TYPICAL EXIT RAMP PAVEMENT MARKINGS



TYPICAL ENTRANCE RAMP PAVEMENT MARKINGS



LANE REDUCTION PAVEMENT MARKINGS



NOTES:

- ① THE DIAGONAL LINES SHALL BE SPACED AT 40' (12 m) C-C ACROSS ALL STRUCTURES WHICH ARE 500' (150 m) OR LESS IN LENGTH. THE DIAGONAL LINES ARE NOT REQUIRED ON SHOULDERS WHICH ARE 6' (1.8 m) OR LESS IN WIDTH.
- ② 4" (2' DASH, 6' SKIP) MARKING ON TAPERED ENTRANCE AND EXIT RAMP SHALL BE OMITTED ON TANGENT SECTIONS.

POSTED SPEED LIMIT	D DISTANCE
45 MPH	750' (230 m)
55 MPH	950' (290 m)
65 MPH	1200' (365 m)

FILE NAME =
 USER NAME = gorengautob
 DESIGNED - D.W.S.
 REVISED - J.A.F. 02-06
 REVISED - S.P.B. 01-07
 PLOT SCALE = 100.0000' / in.
 CHECKED -
 REVISED - S.P.B. 01-10
 PLOT DATE = 8/24/2015
 DATE - 01-90
 REVISED - M.D. 05-13

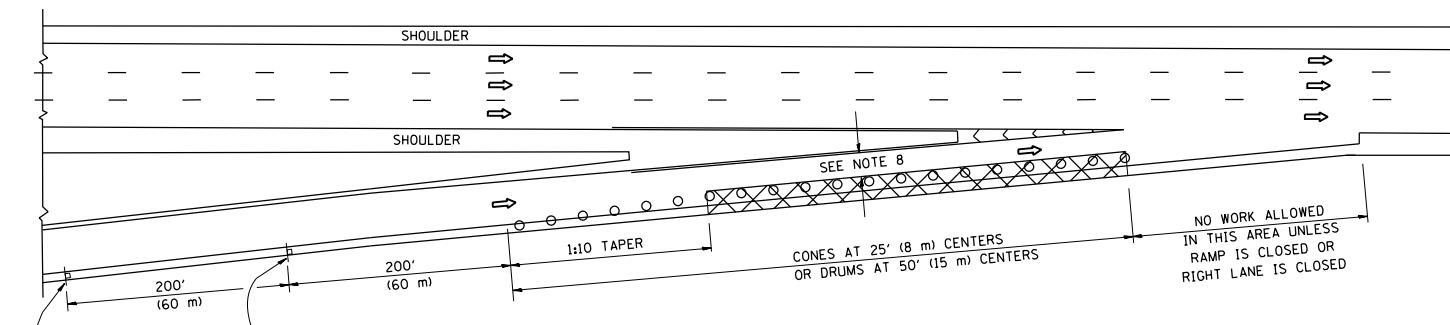
**STATE OF ILLINOIS
 DEPARTMENT OF TRANSPORTATION**

**MULTI-LANE FREEWAY
 PAVEMENT MARKING DETAILS**

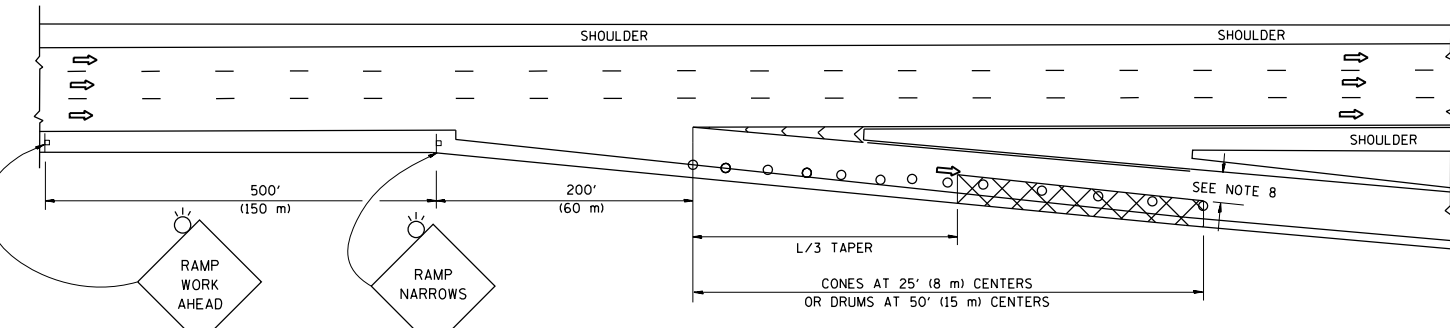
SCALE: NONE SHEET NO. 1 OF 2 SHEETS STA. TO STA.

F.A.I. RTE.	SECTION	COUNTY	TOTAL SHEETS	SHEET NO.
80/94	2015-0531	COOK	11	9
TC-12		CONTRACT NO. 62B14		
FED. ROAD DIST. NO. 1 ILLINOIS FED. AID PROJECT				

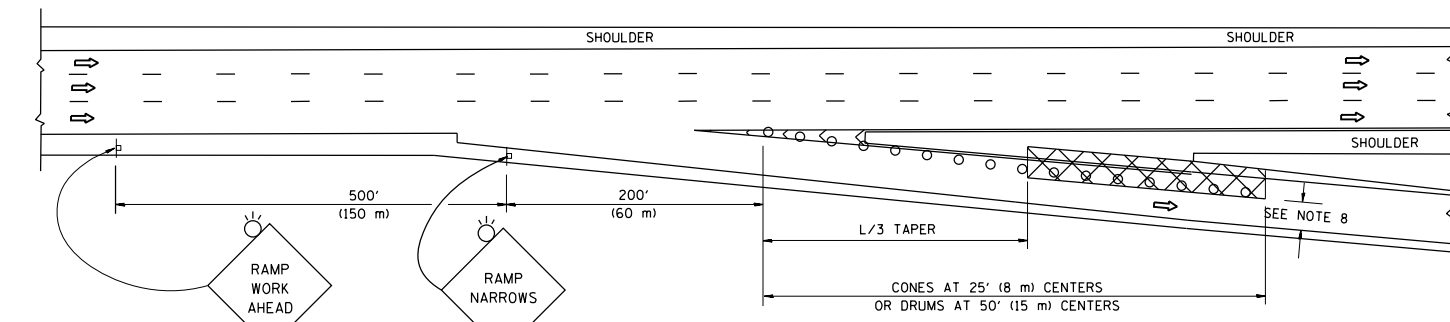
PARTIAL RAMP CLOSURE DETAILS



TYPICAL ENTRANCE RAMP



TYPICAL EXIT RAMP



TYPICAL EXIT RAMP

SYMBOLS

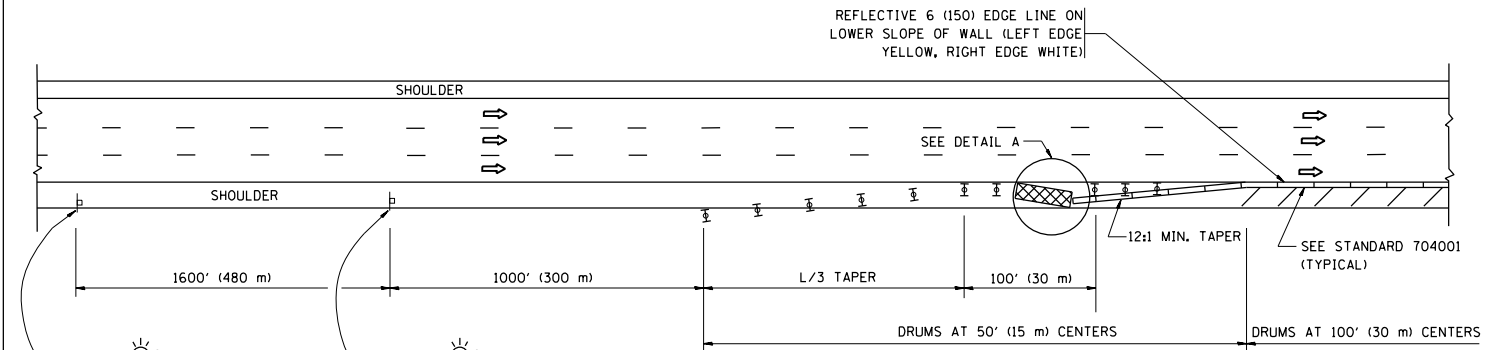
- ACTIVE WORK AREA
- SIGN ON PORTABLE OR PERMANENT SUPPORT
- FLAGGER WITH CONTROL SIGN
- TYPE II BARRICADE OR DRUM WITH STEADY BURN MONO-DIRECTIONAL LIGHT
- CONE, DRUM OR BARRICADE
- IMPACT ATTENUATOR OF TYPE AND TEST LEVEL SPECIFIED

GENERAL NOTES

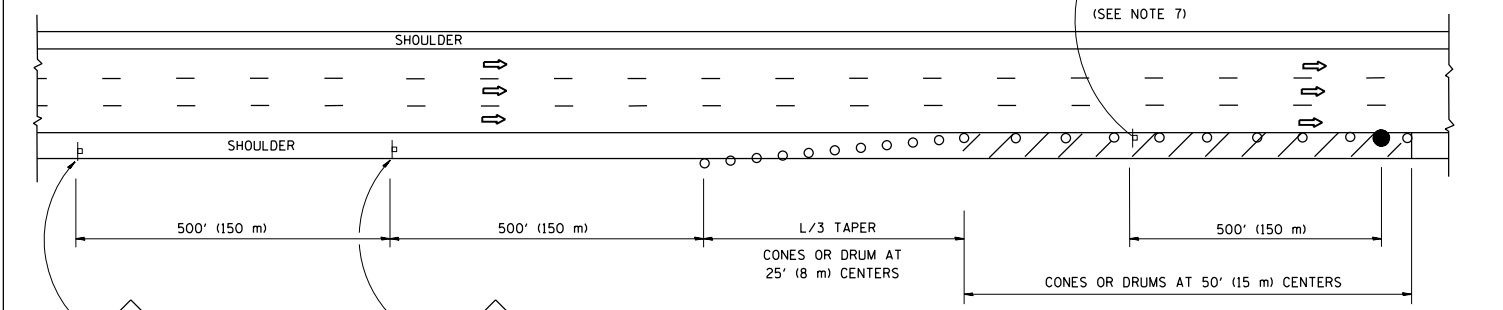
1. THE "L" DISTANCE EQUALS:

SPEED LIMIT	FORMULAS
45 mph (80 km/h)	METRIC ENGLISH
OR GREATER:	L=0.65(W)(S) L=(W)(S)
W = WIDTH OF OFFSET IN FEET (METERS)	
S = NORMAL POSTED SPEED MPH (KM/H)	
2. PLASTIC DRUMS WITH HIGH PERFORMANCE REFLECTIVE SHEETING AND STEADY BURNING LIGHTS ARE REQUIRED FOR ALL NIGHTTIME CLOSURES.
3. ALL SIGNS SHALL BE POST MOUNTED IF THE CLOSURE TIME EXCEEDS FOUR DAYS.
4. FLASHING LIGHTS SHALL BE USED DURING THE HOURS OF DARKNESS AND SHALL BE INSTALLED ABOVE THE FIRST TWO SETS OF SIGNS.

SHOULDER CLOSURE DETAILS

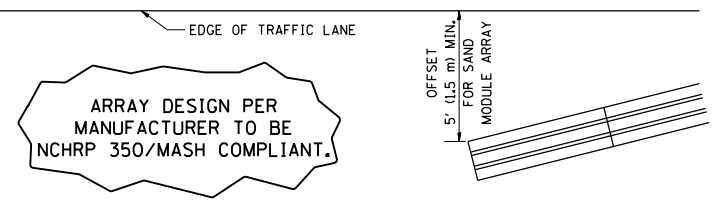


PERMANENT SHOULDER CLOSURE



DAYTIME SHOULDER CLOSURE

THIS DETAIL IS USED WHERE:
 1. VEHICLES, EQUIPMENT, WORKERS OR THEIR ACTIVITIES ENCR OACH IN AN AREA CLOSER THAN 15' (4.5 m) TO THE EDGE OF PAVEMENT FOR A PERIOD IN EXCESS OF 15 MINUTES.

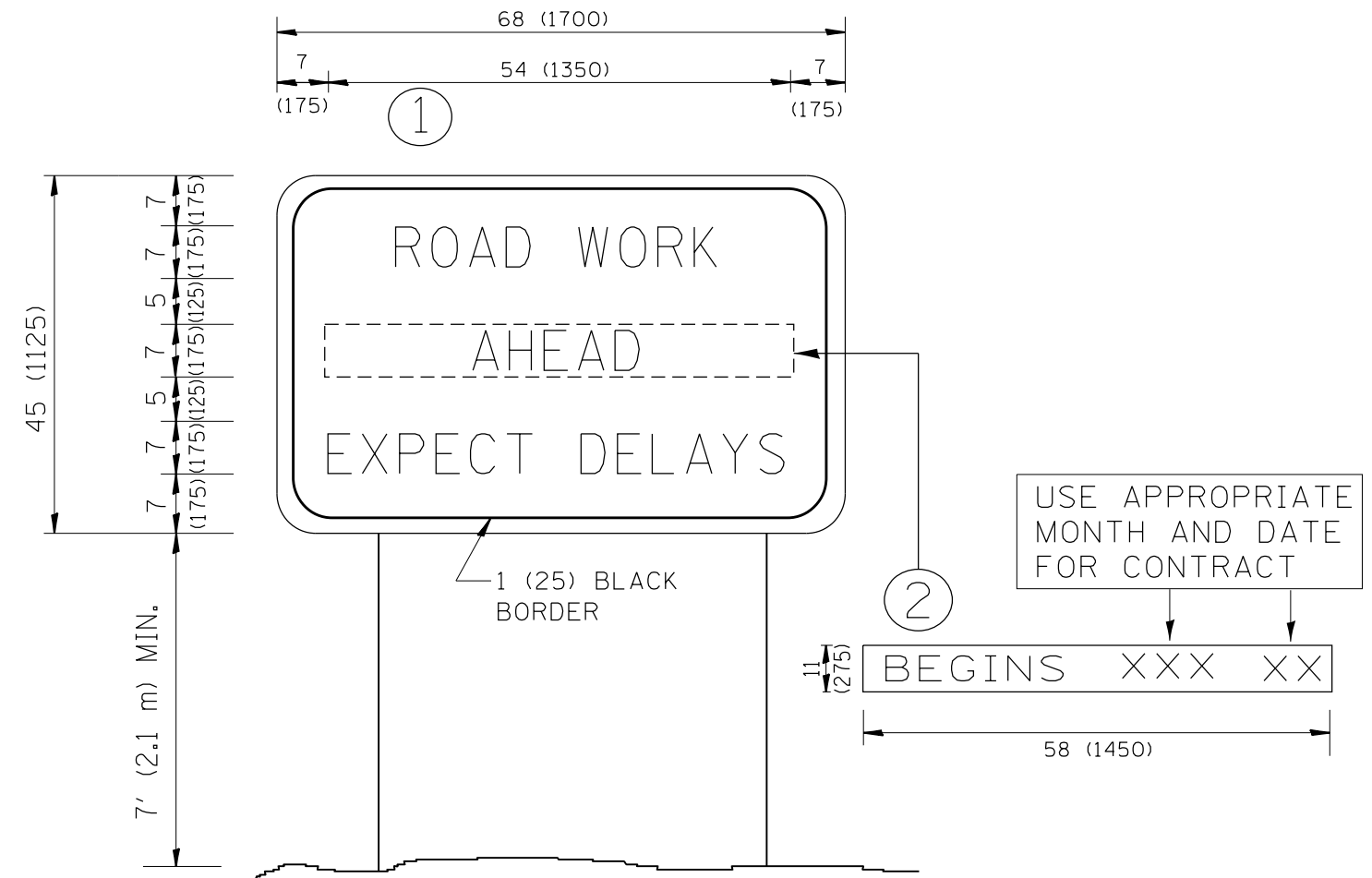


DETAIL "A"
 IMPACT ATTENUATOR, TEMPORARY
 (SEE NOTE 5)

5. THE IMPACT ATTENUATOR, TEMPORARY IS NOT REQUIRED WHEN THE TEMPORARY CONCRETE BARRIER WALL IS PROTECTED BY OR IS TIED INTO THE EXISTING GUARDRAIL. IF OFFSET IS LESS THAN 5 FEET USE NARROW USE TYPE DEVICE TO MEET NCHRP350/MASH.
6. AUTHORIZATION FROM THE DISTRICT'S BUREAU OF TRAFFIC IS REQUIRED FOR ALL FREEWAY CLOSURES.
7. THE FLAGGER AND FLAGGER SIGN ARE REQUIRED AT THE ABOVE WORK SITES WHEN:
 - a. FOUR OR MORE WORK VEHICLES ENTER THE TRAFFIC LANES IN A ONE HOUR PERIOD.
 - b. THE WORK AVTIVITY REQUIRES FREQUENT ENCR OACHMENT INTO THE LANE OPEN TO TRAFFIC.
 THE FLAGGER SHALL BE STATIONED APPROXIMATELY 100' (30 m) TO 200' (60 m) IN ADVANCE OF THE WORKERS.
8. 12' MIN. WIDTH TANGENT SECTION
 16' MIN. WIDTH CURVE SECTION.

ALL DIMENSIONS ARE IN INCHES (MILLIMETERS) UNLESS OTHERWISE SHOWN.

FILE NAME =	USER NAME = gorengautab	DESIGNED -	REVISED - J.A.F. 12-06	STATE OF ILLINOIS DEPARTMENT OF TRANSPORTATION	TRAFFIC CONTROL DETAILS FOR FREEWAY SHOULDER CLOSURES AND PARTIAL RAMP CLOSURES	F.A.I. R.T.E.	SECTION	COUNTY	TOTAL SHEETS	SHEET NO.	
			REVISED - S.P.B. 01-07			80/94	2015-0531	COOK	11	10	
			REVISED - S.P.B. 12-09			TC-17		CONTRACT NO. 62B14			
			REVISED - M.D. 06-13			SCALE: NONE		SHEET NO. 1 OF 1 SHEETS		STA. TO STA.	
						FED. ROAD DIST. NO. 1 ILLINOIS FED. AID PROJECT					



NOTES:

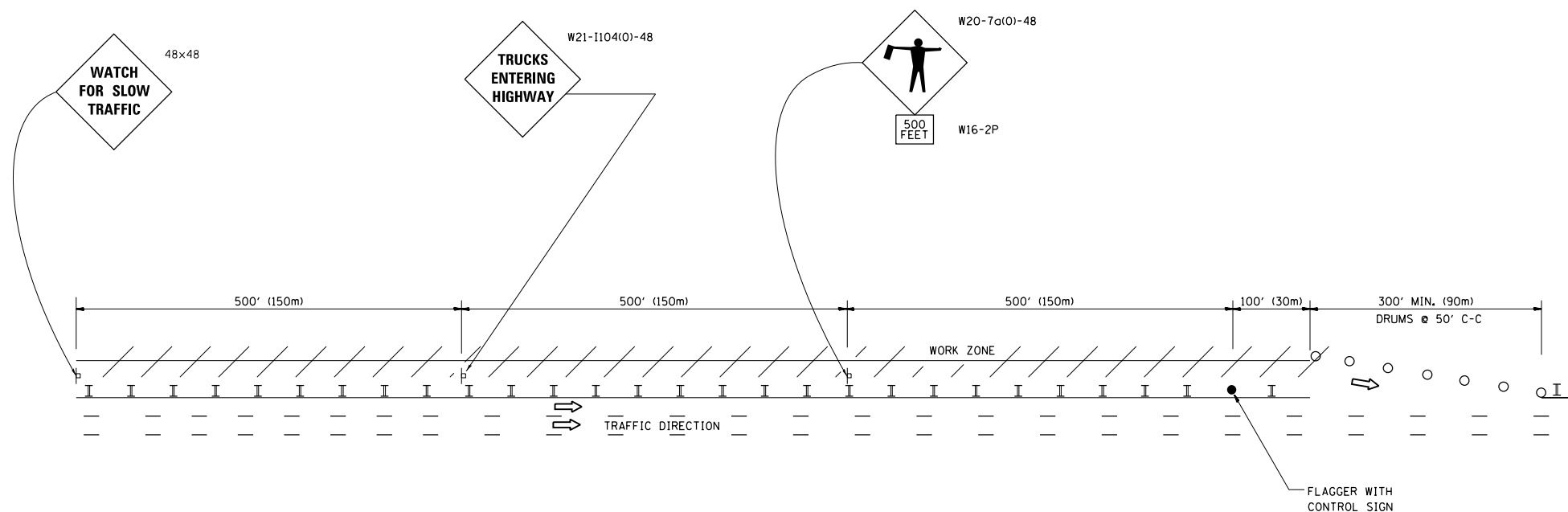
1. USE BLACK LETTERING ON ORANGE BACKGROUND.
2. ERECT SIGNS IN ADVANCE OF THE LOCATION FOR THE "ROAD CONSTRUCTION AHEAD" SIGN AT LOCATIONS AS DIRECTED BY THE ENGINEER.
3. ERECT SIGN ① WITH INSTALLED PANEL ② ONE WEEK PRIOR TO THE START OF CONSTRUCTION.
4. REMOVE PANEL ② SOON AFTER THE START OF CONSTRUCTION.
5. SEE SPECIAL PROVISION FOR "TEMPORARY INFORMATION SIGNING" FOR ADDITIONAL INFORMATION.
6. ONE SIGN ASSEMBLY EQUALS 25.70 SQ. FT. (2.3 SQ. M.)
7. SHALL BE PAID FOR AS TEMPORARY INFORMATION SIGNING.

ALL DIMENSIONS ARE IN INCHES (MILLIMETERS) UNLESS OTHERWISE SHOWN.

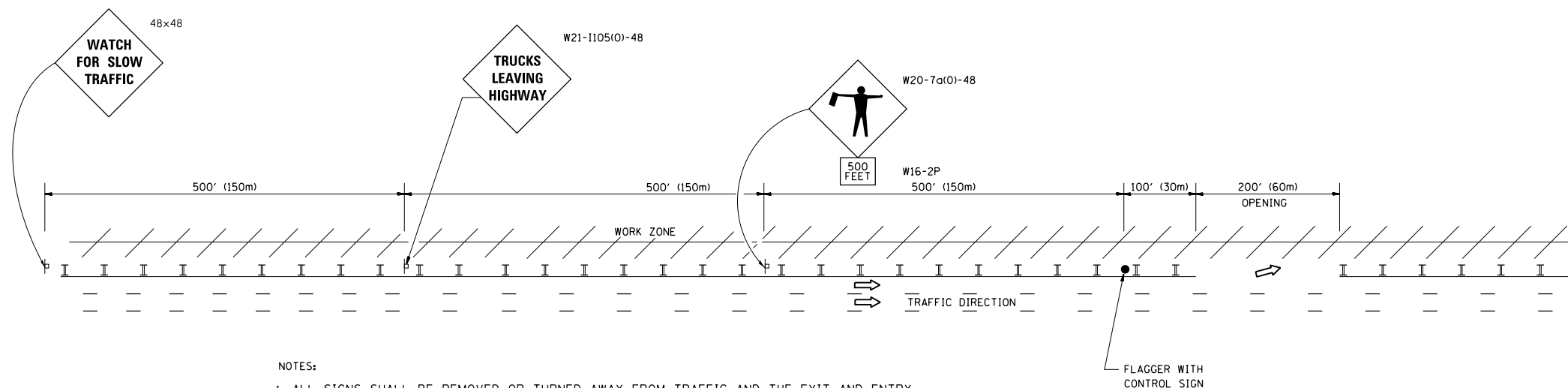
FILE NAME =	USER NAME = gorengautob	DESIGNED -	REVISED - R. MIRS 09-15-97	STATE OF ILLINOIS DEPARTMENT OF TRANSPORTATION	ARTERIAL ROAD INFORMATION SIGN	F.A.I. RTE.	SECTION	COUNTY	TOTAL SHEETS	SHEET NO.
p:\11\084EBIDINTEG.illinois.gov\PIWIDOT\Documents\DOT Offices\District 1\Projects\DI389\Drawings\Design\DistStd.dgn		REVISED - R. MIRS 12-11-97				80/94	2015-0531	COOK	11	11
PLOT SCALE = 100.0000' / in.	CHECKED -	REVISED - T. RAMMACHER 02-02-99				TC-22		CONTRACT NO. 62B14		
PLOT DATE = 8/24/2015	DATE -	REVISED - C. JUCIUS 01-31-07				SCALE: NONE	SHEET NO. 1 OF 1 SHEETS	STA.	TO STA.	FED. ROAD DIST. NO. 1 ILLINOIS FED. AID PROJECT

SIGNING FOR FLAGGING OPERATIONS AT WORK ZONE OPENINGS

WORK ZONE EXIT OPENING



WORK ZONE ENTRY OPENING



NOTES:

1. ALL SIGNS SHALL BE REMOVED OR TURNED AWAY FROM TRAFFIC AND THE EXIT AND ENTRY OPENINGS SHALL BE CLOSED WHEN THE FLAGGING OPERATION CEASES. NON OPERATING EQUIPMENT SHALL COMPLY WITH ARTICLE 701.11
2. WORK ZONE OPENINGS SHALL BE A MINIMUM OF ONE HALF MILE APART AND A MINIMUM OF ONE QUARTER MILE FROM ALL ENTRANCE AND EXIT RAMP.
3. EXITING THE WORK ZONE AT ANY PLACE OTHER THAN AT A WORK ZONE EXIT OPENING WILL BE PROHIBITED.
4. ALL VEHICLES SHALL ENTER THE WORK ZONE AT ENTRY OPENINGS, USING THEIR TURN SIGNALS TO WARN MOTORISTS
5. FLAGGERS SHALL NOT STOP TRAFFIC OR DIRECT TRAFFIC INTO AN ADJACENT LANE.

ALL DIMENSIONS ARE IN INCHES (MILLIMETERS)
UNLESS OTHERWISE SHOWN

FILE NAME =	USER NAME = gorengautab	DESIGNED -
pw:\IL\084EBID\INTEG.illinois.gov\PWIDOT\Documents\IDOT Offices\District 1\Projects\DI389\Design\DistStd.dgn		REVISOR =
	PLOT SCALE = 100.0000' / 1in.	CHECKED -
	PLOT DATE = 8/24/2015	DATE -

DESIGNED -	J.A.F. 02-06
REVISOR =	S.P.B. 01-07
CHECKED -	S.P.B. 12-09
DATE -	M.D. 06-13

STATE OF ILLINOIS DEPARTMENT OF TRANSPORTATION

FREEWAY/EXPRESSWAY SIGNING FOR FLAGGING OPERATIONS AT WORK ZONE OPENINGS ON FREEWAYS/EXPRESSWAYS

SCALE: NONE SHEET NO. 1 OF 1 SHEETS STA. TO STA.

F.A.I. RTE.	SECTION	COUNTY	TOTAL SHEETS	SHEET NO.
80/94	2015-053I	COOK	11	11A
TC-18		CONTRACT NO. 62B14		
FED. ROAD DIST. NO. 1 ILLINOIS FED. AID PROJECT				