

STATE OF ILLINOIS
DEPARTMENT OF TRANSPORTATION

F.A.P. RTE.	SECTION	COUNTY	TOTAL SHEETS	SHEET NO.
331	D9 PATCH 2021-1	JACKSON	6	1
		ILLINOIS	CONTRACT NO. 78806	

FOR INDEX OF SHEETS, SEE SHEET NO. 3

TRAFFIC DATA - (2019 ADT)
IL 13 WESTBOUND - 7,600 WITH 7.9% TRUCKS

POSTED SPEED LIMITS
IL 13 WB - 55 MPH

TOWNSHIPS
MURPHYSBORO

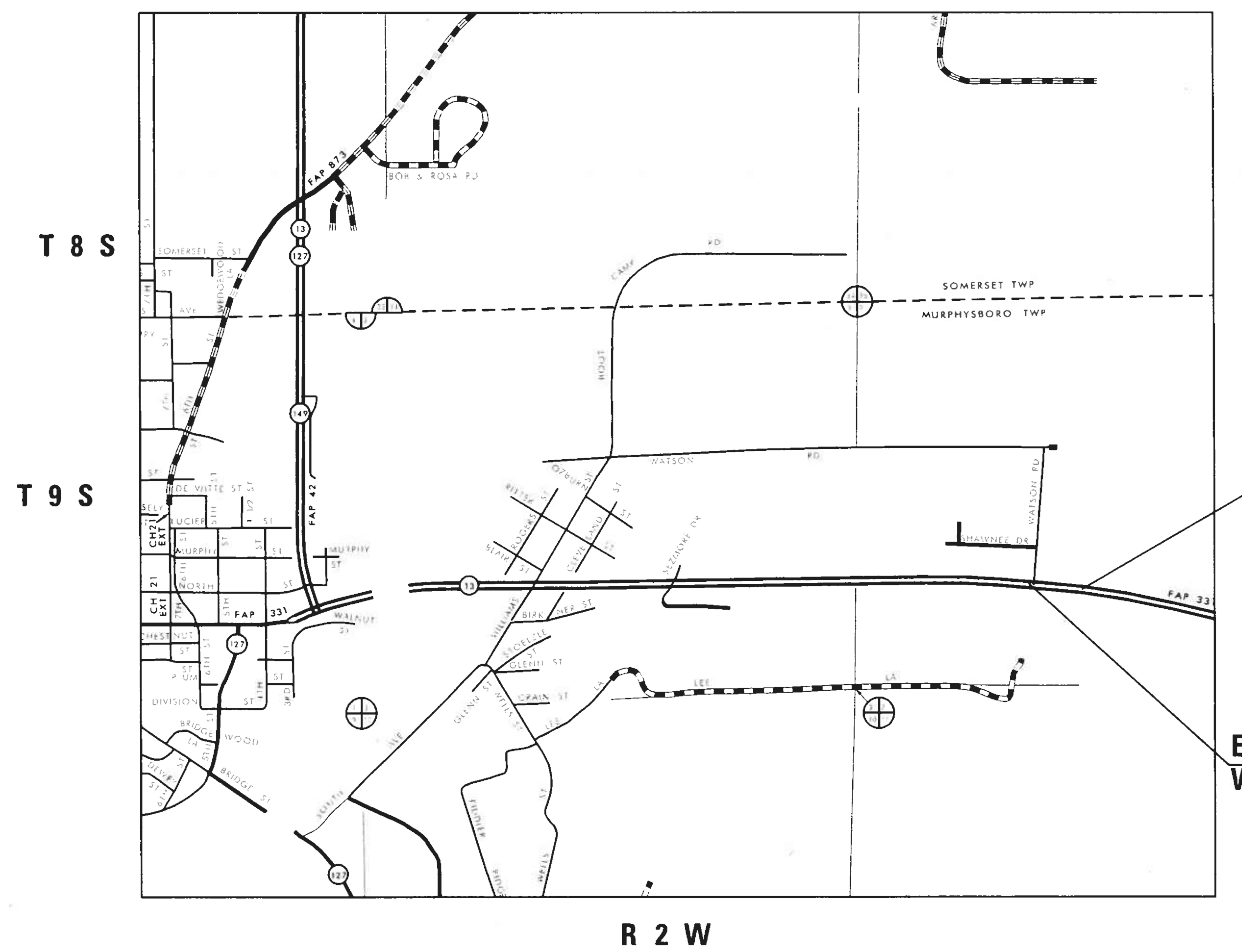
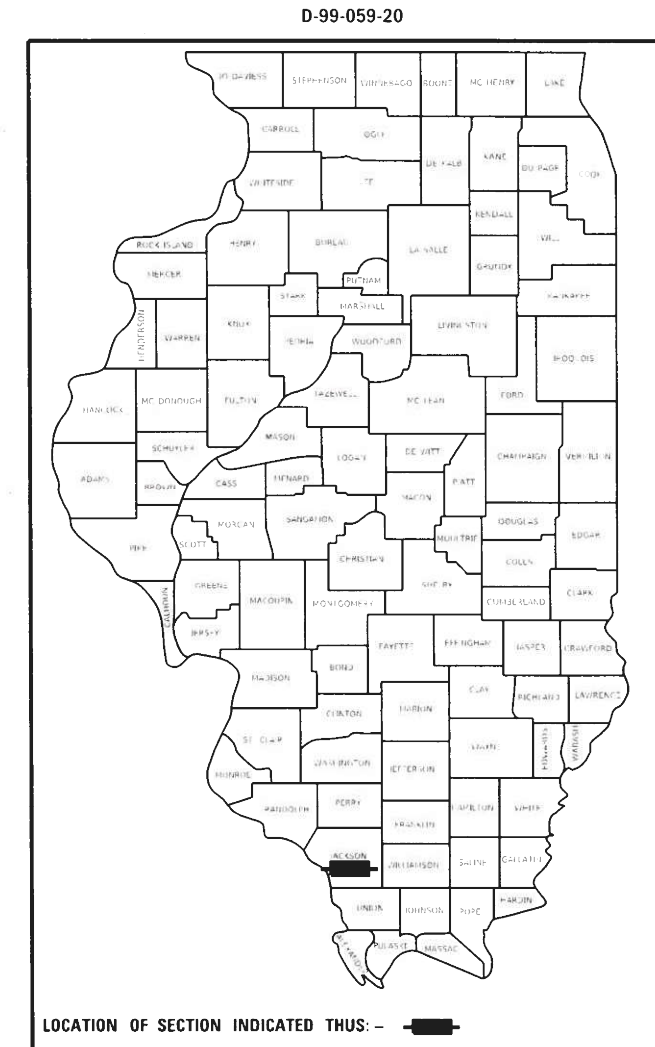
COORDINATE SYSTEM:
EPSG: 102672 - NAD 1983
STATE PLANE ILLINOIS EAST FIPS 1202 WEST

PROPOSED HIGHWAY PLANS

FAP ROUTE 331/L 13
SECTION D9 PATCH 2021-1

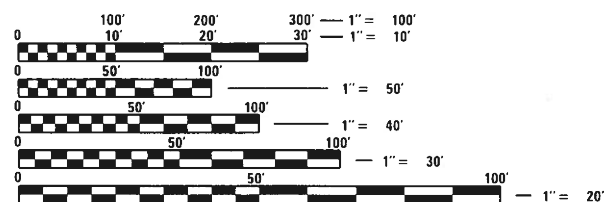
PAVEMENT PATCHING
JACKSON COUNTY

C-99-079-20



END PROJECT IL 13
WB STA 262+46

END PROJECT IL 13
WB STA 268+48



FULL SIZE PLANS HAVE BEEN PREPARED USING STANDARD ENGINEERING SCALES. REDUCED SIZED PLANS WILL NOT CONFORM TO STANDARD SCALES. IN MAKING MEASUREMENTS ON REDUCED PLANS, THE ABOVE SCALES MAY BE USED.

J.U.L.I.E.
JOINT UTILITY LOCATION INFORMATION FOR EXCAVATORS
1-800-892-0123
OR 811

PROJECT ENGINEER SUSAN POE
PROJECT MANAGER NATHAN TAYLOR

CONTRACT NO. 78806

GROSS LENGTH = 602 FT. = 0.11 MILE
NET LENGTH = 602 FT. = 0.11 MILE

STATE OF ILLINOIS
DEPARTMENT OF TRANSPORTATION

SUBMITTED 10/05/20

[Signature] REGIONAL ENGINEER

October 2, 2020

[Signature] ENGINEER OF DESIGN AND ENVIRONMENT

October 2, 2020

[Signature] DIRECTOR OF HIGHWAYS PROJECT IMPLEMENTATION

PRINTED BY THE AUTHORITY
OF THE STATE OF ILLINOIS

SUMMARY OF QUANTITIES

COUNTY:	JACKSON
ROUTE:	FAP 331
FUNDING:	100% STATE
LOCATION:	RURAL
	ROADWAY
	0005

CODE NUMBER	ITEM DESCRIPTION	UNIT	TOTAL QUANTITY	
44200525	CLASS A PATCHES, TYPE I, 8 INCH	SQ YD	8	8
44200529	CLASS A PATCHES, TYPE II, 8 INCH	SQ YD	22	22
44200533	CLASS A PATCHES, TYPE III, 8 INCH	SQ YD	17	17
44200535	CLASS A PATCHES, TYPE IV, 8 INCH	SQ YD	399	399
44213000	PATCHING REINFORCEMENT	SQ YD	446	446
44213200	SAW CUTS	FOOT	1,372	1,372
44213204	TIE BARS 3/4"	EACH	379	379
67100100	MOBILIZATION	L SUM	1	1
70100320	TRAFFIC CONTROL AND PROTECTION, STANDARD 701422	L SUM	1	1
70102635	TRAFFIC CONTROL AND PROTECTION, STANDARD 701701	L SUM	1	1
70107025	CHANGEABLE MESSAGE SIGN	CAL DA	28	28
* 88600100	DETECTOR LOOP, TYPE I	FOOT	70	70

* SPECIALTY ITEM

MONEI: D:\out\...
 FILE NAME: ...

USER NAME = TaylorND	DESIGNED -	REVISED -
	DRAWN -	REVISED -
PLOT SCALE = 2 0000' / in.	CHECKED -	REVISED -
PLOT DATE = 7/31/2020	DATE -	REVISED -

**STATE OF ILLINOIS
DEPARTMENT OF TRANSPORTATION**

SUMMARY OF QUANTITIES

SCALE: SHEET OF SHEETS STA. TO STA.

F.A.P. RTE.	SECTION	COUNTY	TOTAL SHEETS	SHEET NO.
331	D9 PATCH 2021-1	JACKSON	6	4
CONTRACT NO. 78806				
ILLINOIS FED. AID PROJECT				

