

GENERAL NOTES

1. SEVENTY-TWO (72) HOURS BEFORE STARTING EXCAVATION, THE CONTRACTOR SHALL CALL JULIE AT 1-800-892-0123 OR 811 TO HAVE THE LOCATION OF EXISTING UNDERGROUND UTILITIES MARKED IN THE FIELD.
2. A MINIMUM OF SEVENTY-TWO HOURS PRIOR TO ANY PLACEMENT OR RELOCATION OF MAINTENANCE OF TRAFFIC DEVICES, CONTACT ILLINOIS DEPARTMENT OF TRANSPORTATION (IDOT) DISTRICT 1 BUREAU OF TRAFFIC.
3. THE CONTRACTOR IS RESPONSIBLE FOR OBTAINING ALL NECESSARY PERMITS TO PERFORM WORK.
4. EXCEPT WHERE DESIGNATED OTHERWISE, THE LOCATIONS AND/OR DEPTHS OF UNDERGROUND UTILITIES SHOWN HAVE BEEN TAKEN FROM OFFICE RECORD INFORMATION FURNISHED BY THE UTILITY OWNERS AND THE SUE SURVEYS. ALL UNDERGROUND UTILITIES MUST BE CONSIDERED APPROXIMATE.
5. THE CONTRACTOR SHALL BE RESPONSIBLE FOR THE PROTECTION OF ALL UNDERGROUND OR SURFACE UTILITIES EVEN THOUGH THEY MAY NOT BE SHOWN IN THE PLANS. ANY UTILITY THAT IS DAMAGED DURING CONSTRUCTION SHALL BE REPAIRED OR REPLACED TO THE SATISFACTION OF THE ENGINEER. THIS WORK WILL BE AT THE CONTRACTORS EXPENSE.
6. THE CONTRACTOR SHALL COORDINATE WORK WITH UTILITIES IN ADVANCE OF WORKING IN THE VICINITY OF THEIR FACILITIES, AND ALLOW SUFFICIENT TIME FOR THEM TO PREFORM ADJUSTMENTS TO THEIR FACILITIES IN ACCORDANCE WITH THE CONTRACTOR'S SCHEDULE. COORDINATION EFFORTS SHALL BE INCLUDED IN THE COST OF THE CONTRACT BID PRICE.
7. THE CONTRACTOR MUST CALL THE IDOT ELECTRICAL MAINTENANCE CONTRACTOR TO LOCATE IDOT FACILITY CABLES.
8. ALL SEWER AND WATER SERVICES CROSSED BY NEW STORM SEWERS SHALL BE PROPERLY LOCATED AND PROTECTED DURING CONSTRUCTION. ANY DAMAGE DONE TO SAID SERVICES NOT CONSIDERED TO BE IN CONFLICT WITH THE PROPOSED CONSTRUCTION SHALL BE REPAIRED BY THE CONTRACTOR AT HIS OWN EXPENSE.
9. IT SHALL BE THE CONTRACTOR'S RESPONSIBILITY TO VERIFY ALL DIMENSIONS AND CONDITIONS EXISTING IN THE FIELD PRIOR TO ORDERING MATERIALS AND BEGINNING CONSTRUCTION.
10. THE CONTRACTOR WILL NOT BE ALLOWED TO SET UP A YARD OR FIELD OFFICE ON STATE PROPERTY WITHOUT WRITTEN PERMISSION FROM THE DEPARTMENT.
11. ALL ELEVATIONS REFER TO USGS MEAN SEA LEVEL DATUM.
12. THE PAVEMENT ELEVATIONS SHOWN ON THE PLANS ARE FINISHED GRADES OR SURFACE COURSE, UNLESS OTHERWISE INDICATED.
13. 10 FT TRANSITIONS SHALL BE USED TO MATCH PROPOSED ITEMS OF WORK TO EXISTING ITEMS IN THE FIELD, UNLESS OTHERWISE SHOWN. THE TRANSITIONS SHALL BE PAID FOR AT THE CONTRACT UNIT PRICE FOR THE PROPOSED ITEM OF WORK SPECIFIED.
14. THE COST OF FULL OR PARTIAL DEPTH SAW CUTS REQUIRED FOR REMOVAL ITEMS SHALL NOT BE PAID FOR SEPARATELY, BUT SHALL BE INCLUDED IN THE UNIT PRICE FOR THE ITEM.
15. THE ACTUAL NEED FOR AGGREGATE SUBGRADE IMPROVEMENT SHALL BE DETERMINED IN THE FIELD FOR SOILS THAT TEND TO BE UNSUITABLE OR UNSTABLE. THE ACTUAL NEED FOR REMOVAL AND REPLACEMENT WITH AGGREGATE SUBGRADE IMPROVEMENT WILL BE DETERMINED IN THE FIELD AT THE TIME OF CONSTRUCTION BY THE GEOTECHNICAL ENGINEER. ALL POTENTIALLY UNSTABLE SOILS SHOULD BE TESTED WITH A STATIC CONE PENETROMETER AND TREATED IN ACCORDANCE WITH ARTICLE 301.04 AND THE UNDERCUT GUIDELINES IN THE IDOT SUBGRADE STABILITY MANUAL. IF UNSTABLE AND/ OR UNSUITABLE MATERIAL IS ENCOUNTERED, THE SOIL SHALL BE REMOVED AND REPLACED WITH AGGREGATE SUBGRADE IMPROVEMENT OR EMBANKMENT AS DETERMINED BY THE GEOTECHNICAL ENGINEER. IF UNSTABLE AND/ OR UNSUITABLE MATERIAL IS NOT ENCOUNTERED, THEN THE QUANTITY SHALL BE DEDUCTED AND NO ADDITIONAL COMPENSATION WILL BE DUE THE CONTRACTOR.
16. REMOVAL OF EXISTING PIPE UNDERDRAIN AND PIPE UNDERDRAIN OUTFALL STRUCTURES ARE INCLUDED IN THE PRICE OF EARTH EXCAVATION.
17. ALL FLAGGING COSTS FOR WISCONSIN CENTRAL, LTD. SHALL BE PAID PER "RAILROAD FLAGGING (WCL)" SPECIFICATION PROVIDED IN THE CONTRACT SPECIAL PROVISIONS

GENERAL NOTES (CONTINUED)

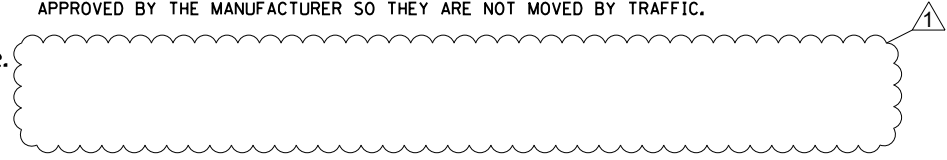
18. FOR WORK OUTSIDE THE LIMITS OF BRIDGE APPROACH PAVEMENT, ALL REFERENCES IN THE HIGHWAY STANDARDS AND SPECIFICATIONS FOR REINFORCEMENT, DOWEL BARS AND TIE BARS IN PAVEMENT, SHOULDERS, CURB, GUTTER, COMBINATION CURB AND GUTTER AND MEDIAN, AND CHAIR SUPPORTS FOR CRC PAVEMENT, SHALL BE EPOXY COATED, UNLESS NOTED ON THE PLAN.
19. WHEN ARTIFICIAL LIGHTING IS USED IN NIGHT OPERATIONS THE CONTRACTOR SHALL EXERCISE THE UTMOST PRECAUTIONS IN PREVENTING ADVERSE VISIBILITY TO THE MOTORING PUBLIC, AIR TRAFFIC AND ADJOINING COMMERCIAL AREAS.
20. BARRICADES: TYPE I, TYPE II, AND TYPE III BARRICADES SHALL BE WEIGHTED IN A MANNER APPROVED BY THE MANUFACTURER SO THEY ARE NOT MOVED BY TRAFFIC.
22. THIS PROJECT REQUIRES A US ARMY CORPS OF ENGINEERS (USACE) 404 PERMIT THAT WILL BE SECURED BY THE DEPARTMENT. AS A CONDITION OF THIS PERMIT, THE CONTRACTOR WILL NEED TO SUBMIT AN IN-STREAM WORK PLAN TO THE DEPARTMENT FOR APPROVAL. GUIDELINES ON ACCEPTABLE IN-STREAM WORK TECHNIQUES CAN BE FOUND ON THE USACE WEBSITE. THE USACE DEFINES AND DETERMINES IN-STREAM WORK. THE COST OF ALL MATERIALS AND LABOR NECESSARY TO COMPLY WITH THE ABOVE PROVISIONS TO PREPARE AND IMPLEMENT AN IN-STREAM WORK PLAN WILL NOT BE PAID FOR SEPERATELY, BUT SHALL BE CONSIDERED AS INCLUDED IN THE UNIT BID PRICES OF THE CONTRACT AND NO ADDITIONAL COMPENSATION WILL BE ALLOWED.
23. THE SUBGRADE STABILITY SHALL BE VERIFIED BY PROOF ROLLING WITH A FULLY LOADED TANDEM-AXLE TRUCK.
24. ANY AGGREGATE SUBGRADE IMPROVEMENT CONTAMINATED AND/OR DAMAGED BY THE CONTRACTOR'S VEHICLES AND/OR EQUIPMENTS IS TO BE REMOVED AND REPLACED AS DIRECT BY THE ENGINEER AT CONTRACTOR EXPENSE.
25. THE DEPARTMENT HAS NOT OBTAINED ANY PERMITS FOR OFFSITE BORROW, WASTE USE (BWU) AREAS. PRIOR TO WORKING IN BWU AREAS, IF THE CONTRACTOR CHOOSES TO USE ACTIVITIES REQUIRING PERMITS, IT IS THE CONTRACTOR'S RESPONSIBILITY TO SECURE THE PROPER PERMITS. IN ADDITION TO THE BORROW REVIEW (BDE 2289) AND USE/WASTE REVIEW (BDE 2290) SUBMITTALS, THE CONTRACTOR SHALL SUBMIT AN EROSION AND SEDIMENT CONTROL (ESC) PLAN FOR EVERY BWU SITE TO THE DEPARTMENT FOR ACCEPTANCE. GUIDELINES FOR ACCEPTABLE BWU PRACTICES CAN BE FOUND IN SECTION II.G.1 AND 2 OF THE SWPPP. THE COST OF ALL MATERIALS AND LABOR NECESSARY TO COMPLY WITH THE ABOVE PROVISIONS TO PREPARE AND IMPLEMENT ESC PLANS WILL NOT BE PAID FOR SEPARATELY, BUT SHALL BE CONSIDERED AS INCLUDED IN THE UNIT BID PRICES OF THE CONTRACT AND NO ADDITIONAL COMPENSATION WILL BE ALLOWED.

DRAINAGE GENERAL NOTES


1. SEE DRAINAGE DETAIL SHEETS FOR DRAINAGE STRUCTURE OFFSET AND RIM ELEVATION LOCATION.
2. THE COST OF MAKING SEWER AND UNDERDRAIN CONNECTIONS TO DRAINAGE STRUCTURES AND BREAKING NEW HOLES INTO EXISTING OR PROPOSED DRAINAGE STRUCTURES SHALL BE CONSIDERED INCLUDED IN THE COST FOR DRAINAGE WORK.
3. PROPOSED RIM AND INVERT ELEVATIONS ARE BASED ON EXISTING THEORETICAL GRADES. ACTUAL FINAL GRADES ARE SUBJECT TO NOMINAL VARIATIONS. ADJUSTMENT OF PROPOSED CASTINGS TO FINAL GRADES IS INCLUDED IN THE COST OF THE RELATED DRAINAGE STRUCTURE. ADJUSTMENT OF PROPOSED PIPE INVERTS TO FINAL GRADES IS INCLUDED IN THE COST OF THE RELATED DRAINAGE PIPE.
4. SUFFICIENT DRAINAGE FACILITIES SHALL BE MAINTAINED THROUGHOUT CONSTRUCTION TO FACILITATE SURFACE RUNOFF. WHEN ANY LOOSE MATERIAL IS DEPOSITED IN THE FLOW LINE OF DITCHES, GUTTER, OR DRAINAGE STRUCTURES SO THAT THE NATURAL FLOW OF WATER IS OBSTRUCTED, IT SHALL BE REMOVED AT THE CLOSE OF EACH WORKING DAY. AT THE CONCLUSION OF THE CONSTRUCTION OPERATIONS ALL DRAINAGE STRUCTURES SO AFFECTED SHALL BE FREE FROM DIRT AND DEBRIS. THIS WORK SHALL BE CONSIDERED AS INCLUDED IN THE CONTRACT. IT SHALL BE THE CONTRACTOR'S RESPONSIBILITY TO PLAN HIS OPERATIONS, WITH THE APPROVAL OF THE ENGINEER IN THE FIELD, SO AS TO UTILIZE THE FACILITIES PROVIDED TO PREVENT LOCAL FLOODING AND ENSURE PROPER SURFACE RUNOFF. ANY MINOR DITCH GRADING AND ANY BULKHEADING AS DIRECTED BY THE ENGINEER, NECESSARY TO PROVIDE FOR THE INTERIM DRAINAGE WILL NOT BE PAID FOR SEPARATELY BUT SHALL BE INCLUDED IN THE COST OF EARTH EXCAVATION.

DRAINAGE GENERAL NOTES

5. ALL STORM SEWERS, PIPE CULVERTS, CATCH BASINS, MANHOLES, INLETS AND SIMILAR STRUCTURES NEWLY CONSTRUCTED, ADJUSTED OR RECONSTRUCTED UNDER THE CONTRACT SHALL BE CLEANED OF ANY ACCUMULATION OF SILT, DEBRIS, OR FOREIGN MATTER OF ANY KIND AND SHALL BE FREE FROM SUCH ACCUMULATIONS AT THE TIME OF FINAL INSPECTION. THE COST OF ANY CLEANING REQUIRED TO COMPLY WITH THIS REQUIREMENT WILL NOT BE PAID FOR SEPARATELY BUT SHALL BE INCLUDED IN THE COST OF THE WORK.
6. THE CONTRACTOR SHALL VERIFY EXISTING OUTLET STRUCTURE LOCATION AND INVERTS PRIOR TO STARTING UPSTREAM STORM SEWER CONNECTION AND CONSTRUCTION.
7. BACKFILLING STORM SEWER CONSTRUCTED UNDER THE ROADWAY SPECIFIED UNDER ART. 550.07(b, c) OF THE SSRBC WILL NOT BE ALLOWED.
8. PIPE UNDERDRAINS SHALL BE INSTALLED ACCORDING TO SECTION 601 OF THE SSRBC AND STANDARD 601001-05. TOP OF PIPE UNDERDRAINS SHALL BE PLACED MINIMUM 6" BELOW THE AGGREGATE SUBGRADE IMPROVEMENT LAYER. THE COST OF MAKING PIPE UNDERDRAINS CONNECTIONS TO DRAINAGE STRUCTURES SHALL BE INCLUDED IN THE COST OF THE PIPE UNDERDRAINS.
9. ROCK EXCAVATION IS EXPECTED FOR PLACEMENT OF A PORTION OF PROPOSED STORM SEWER. AN APPROX. QUANTITY OF ROCK ELEVATION BASED OFF PLAN BORINGS IS SHOWN IN THE DRAIN SCHEDULES BUT SHOULD BE CONFIRMED BY THE ENGINEER IN THE FIELD. ROCK EXCAVATION RELATED TO PLACEMENT OF PROPOSED STORM SEWER WILL IS PAID FOR FOR EACH PIPE SECTION PER SECTION 550.10 AND 502.13 OF THE IDOT SSRBC.



 REVISED SHEET 10/21/2020

USER NAME = default	DESIGNED - ATR	REVISED-  ADDENDUM 10/21/2020
	DRAWN - ATR	REVISED-
PLOT SCALE = #SCALE#	CHECKED - MAM	REVISED-
PLOT DATE = 10/19/2020	DATE - 6/25/2020	REVISED-



**STATE OF ILLINOIS
DEPARTMENT OF TRANSPORTATION**

**EB I-80 FROM GARDNER STREET TO ROWELL AVENUE
GENERAL NOTES AND MIXTURE REQUIREMENTS**


SCALE: N.T.S. SHEET 1 OF 1 SHEETS STA. TO STA.

F.A.I. RTE.	SECTION	COUNTY	TOTAL SHEETS	SHEET NO.
80	2013-008B	WILL	511	4
				CONTRACT NO. 60W34
ILLINOIS FED. AID PROJECT				

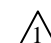
					CONSTRUCTION CODE					
					90% FEDERAL, 10% STATE					
CODE NO.	ITEM	UNIT	TOTAL QUANTITY URBAN	ROADWAY 0004 URBAN	SAFETY 0021 URBAN	BRIDGE	BRIDGE	BRIDGE	BRIDGE	RET WALL
						0010	0010	0010	0010	0004
						SN 099-0062	SN 099-0900	SN 099-0901	SN 099-0904	SN 099-Z##1 SN 099-Z##2 SN 099-W034
* 20100500	TREE REMOVAL, ACRES	ACRE	2.82	2.82						
* 20100110	TREE REMOVAL (6 TO 15 UNITS DIAMETER)	UNIT	150	150	△					
* 20100210	TREE REMOVAL (OVER 15 UNITS DIAMETER)	UNIT	150	150						
20101000	TEMPORARY FENCE	FOOT	344	344						
20200100	EARTH EXCAVATION	CU YD	12,678.0	12,678						
20200200	ROCK EXCAVATION	CU YD	3,869.0	3,869.0	△					
20201200	REMOVAL AND DISPOSAL OF UNSUITABLE MATERIAL	CU YD	5,057.5	5,057.5						
20400800	FURNISHED EXCAVATION	CU YD	20,698.0	20,698						
20800150	TRENCH BACKFILL	CU YD	9,308	9,308						
20900110	POROUS GRANULAR BACKFILL	CU YD	9.6	9.6						
21001000	GEOTECHNICAL FABRIC FOR GROUND STABILIZATION	SQ YD	6,647	6,647						
21101505	TOPSOIL EXCAVATION AND PLACEMENT	CU YD	5,407	5,407						
21101615	TOPSOIL FURNISH AND PLACE, 4"	SQ YD	39,285	39,285						
* 25000210	SEEDING, CLASS 2A	ACRE	7.0	7.0						
* 25000310	SEEDING, CLASS 4	ACRE	3.0	3.0						
* 25000400	NITROGEN FERTILIZER NUTRIENT	POUND	210	210						


* SPECIALTY ITEMS

△ REVISED SHEET 10/21/2020

					CONSTRUCTION CODE					
					90% FEDERAL, 10% STATE					
CODE NO.	ITEM	UNIT	TOTAL QUANTITY URBAN			BRIDGE	BRIDGE	BRIDGE	BRIDGE	RET WALL
				ROADWAY	SAFETY	0010	0010	0010	0010	0004
				0004	0021	SN 099-0062	SN 099-0900	SN 099-0901	SN 099-0904	SN 099-Z##1 SN 099-Z##2 SN 099-W034
31101200	SUBBASE GRANULAR MATERIAL, TYPE B 4"	SQ YD	21,924	21,924						
31200500	STABILIZED SUBBASE - HOT-MIX ASPHALT, 4"	SQ YD	35,472	35,472						
35101600	AGGREGATE BASE COURSE, TYPE B 4"	SQ YD	198	198						
35101800	AGGREGATE BASE COURSE, TYPE B 6"	SQ YD	3,267	2,117						1,150
40600982	HOT-MIX ASPHALT SURFACE REMOVAL - BUTT JOINT	SQ YD	996	996						
40603090	HOT MIX ASPHALT BINDER COURSE, IL 19.0, N90	TON	129	129						
40603240	POLYMERIZED HOT-MIX ASPHALT BINDER COURSE, IL-19.0, N90 	TON	445	445						
40605026	POLYMERIZED HOT-MIX ASPHALT SURFACE COURSE, STONE MATRIX ASPHALT, 9.5, MIX "F", N80	TON	445	445						
40800029	BITUMINOUS MATERIALS (TACK COAT)	POUND	976	976						
42000080	PAVEMENT CONNECTOR (PCC) FOR BRIDGE APPROACH SLAB	SQ YD	815	815						
42000401	PORTLAND CEMENT CONCRETE PAVEMENT 9" (JOINTED)	SQ YD	3,339	3,339						
42001300	PROTECTIVE COAT	SQ YD	96,902	96,902						
42100360	CONTINUOUSLY REINFORCED PORTLAND CEMENT CONCRETE PAVEMENT 13"	SQ YD	26,950	26,950						
42100615	PAVEMENT REINFORCEMENT	SQ YD	26,950	26,950						
42101448	LUG SYSTEM COMPLETE 48'	EACH	3	3						

* SPECIALTY ITEMS

 REVISED SHEET 10/21/2020

USER NAME = default	DESIGNED -	REVISED -		STATE OF ILLINOIS DEPARTMENT OF TRANSPORTATION	EB I-80 FROM GARDNER STREET TO ROWELL AVENUE SUMMARY OF QUANTITIES	F.A.I. RTE.	SECTION	COUNTY	TOTAL SHEETS	SHEET NO.
PLOT SCALE = #SCALE#	DRAWN - LAM	REVISED -				80	2013-008B	WILL	511	7
PLOT DATE = 7/15/2020	CHECKED - DF	REVISED -				CONTRACT NO. 60W34				
FILE NAME = D160W34-sht-soq03.dgn	DATE - 6/25/2020	REVISED -	SCALE: N.T.S.	SHEET 3 OF 23 SHEETS	STA. TO STA.	ILLINOIS FED. AID PROJECT				

					CONSTRUCTION CODE					
					90% FEDERAL, 10% STATE					
CODE NO.	ITEM	UNIT	TOTAL QUANTITY URBAN			BRIDGE	BRIDGE	BRIDGE	BRIDGE	RET WALL
				ROADWAY 0004 URBAN	SAFETY 0021 URBAN	0010	0010	0010	0010	0004
						SN 099-0062	SN 099-0900	SN 099-0901	SN 099-0904	SN 099-Z##1 SN 099-Z##2 SN 099-W034
50100300	REMOVAL OF EXISTING STRUCTURES NO. 1	EACH	2				1	1		
50100400	REMOVAL OF EXISTING STRUCTURES NO. 2	EACH	1						1	
50101500	REMOVAL OF EXISTING SUPERSTRUCTURES	EACH	1			1				
50102400	CONCRETE REMOVAL	CU YD	113.3			113.3				
50104400	CONCRETE HEADWALL REMOVAL	EACH	3	3						
50104650	SLOPE WALL REMOVAL	SQ YD	334			334				
50157300	PROTECTIVE SHIELD	SQ YD	3,811				1,503	1,268	1,040	
50200100	STRUCTURE EXCAVATION	CU YD	9,114.0	32.9		928	1,411.0	1,281.0	1,528.4	3,932.7
50200300	COFFERDAM EXCAVATION	CU YD	435.0			115			320.0	
50200400	ROCK EXCAVATION FOR STRUCTURES	CU YD	912	30	2	357	370	153		
50201101	COFFERDAM (TYPE 1) (LOCATION - 1)	EACH	1			1				
50201102	COFFERDAM (TYPE 1) (LOCATION - 2)	EACH	1			1				
50201103	COFFERDAM (TYPE 1) (LOCATION - 3)	EACH	1			1				
50201104	COFFERDAM (TYPE 1) (LOCATION - 4)	EACH	1			1				

* SPECIALTY ITEMS

△ REVISED SHEET 10/21/2020

USER NAME = default	DESIGNED -	REVISED -
	DRAWN - LAM	REVISED -
PLOT SCALE = #SCALE#	CHECKED - DF	REVISED -
PLOT DATE = 7/15/2020	DATE - 6/25/2020	REVISED -



STATE OF ILLINOIS
DEPARTMENT OF TRANSPORTATION

EB I-80 FROM GARDNER STREET TO ROWELL AVENUE
SUMMARY OF QUANTITIES

F.A.I. RTE.	SECTION	COUNTY	TOTAL SHEETS	SHEET NO.
80	2013-008B	WILL	511	9
CONTRACT NO. 60W34				
ILLINOIS FED. AID PROJECT				

SCALE: N.T.S. SHEET 5 OF 23 SHEETS STA. TO STA.

REV-SEP

				CONSTRUCTION CODE						
				90% FEDERAL, 10% STATE						
CODE NO.	ITEM	UNIT	TOTAL QUANTITY URBAN			BRIDGE	BRIDGE	BRIDGE	BRIDGE	RET WALL
						0010	0010	0010	0010	0004
				ROADWAY 0004 URBAN	SAFETY 0021 URBAN	SN 099-0062	SN 099-0900	SN 099-0901	SN 099-0904	SN 099-Z##1 SN 099-Z##2 SN 099-W034
50201105	COFFERDAM (TYPE 1) (LOCATION - 5)	EACH	1						1	
50201106	COFFERDAM (TYPE 1) (LOCATION - 6)	EACH	1						1	
50300225	CONCRETE STRUCTURES	CU YD	3,221.7			790.5	682.0	597.0	1,152.2	
50300255	CONCRETE SUPERSTRUCTURE	CU YD	4,228.2	370.5		841.4	486.0	425.0	1,302.8	802.5
50300260	BRIDGE DECK GROOVING	SQ YD	11,645			3,389	1,903	1,573	4,780	
50300280	CONCRETE ENCASEMENT	CU YD	114.9			114.9				
50300300	PROTECTIVE COAT	SQ YD	17,129	1,704		3,708	2,367	2,115	5,526	1,709
50301350	CONCRETE SUPERSTRUCTURE (APPROACH SLAB)	CU YD	941.2			268.6	244.0	207.0	221.6	
50500105	¹ FURNISHING AND ERECTING STRUCTURAL STEEL ¹	L SUM	1			0.30	0.10	0.10	0.50	
50500505	STUD SHEAR CONNECTORS	EACH	69,327			16,296	13,248	11,040	28,743	
50800105	REINFORCEMENT BARS	POUND	63,840						63,840	
50800205	REINFORCEMENT BARS, EPOXY COATED	POUND	1,857,370	117,350		412,760	261,950	241,060	717,830	106,420
50800515	BAR SPLICERS	EACH	5,813			1,237	1,078	1,076	2,422	
50800530	MECHANICAL SPLICERS	EACH	20			20				

* SPECIALTY ITEMS

¹ REVISED SHEET 10/21/2020

REV-SEP

USER NAME = default	DESIGNED -	REVISED -
	DRAWN - LAM	REVISED -
PLOT SCALE = #SCALE#	CHECKED - DF	REVISED -
PLOT DATE = 7/15/2020	DATE - 6/25/2020	REVISED -



STATE OF ILLINOIS
DEPARTMENT OF TRANSPORTATION

EB I-80 FROM GARDNER STREET TO ROWELL AVENUE
SUMMARY OF QUANTITIES

F.A.I. RTE.	SECTION	COUNTY	TOTAL SHEETS	SHEET NO.
80	2013-008B	WILL	511	10
			CONTRACT NO. 60W34	

SCALE: N.T.S. SHEET 6 OF 23 SHEETS STA. TO STA.

ILLINOIS FED. AID PROJECT

FILE NAME = D160W34-sht-0008.dgn

CODE NO.	ITEM	UNIT	TOTAL QUANTITY URBAN	CONSTRUCTION CODE						
				90% FEDERAL, 10% STATE						
				ROADWAY 0004 URBAN	SAFETY 0021 URBAN	BRIDGE 0010 SN 099-0062	BRIDGE 0010 SN 099-0900	BRIDGE 0010 SN 099-0901	BRIDGE 0010 SN 099-0904	RET WALL 0004 SN 099-Z##1 SN 099-Z##2 SN 099-W034
* 63000001	STEEL PLATE BEAM GUARDRAIL, TYPE A, 6 FOOT POSTS	FOOT	2,900		2,900					
* 63100045	TRAFFIC BARRIER TERMINAL, TYPE 2	EACH	3		3					
* 63100070	TRAFFIC BARRIER TERMINAL, TYPE 5	EACH	3		3					
* 63100085	TRAFFIC BARRIER TERMINAL, TYPE 6	EACH	6		6					
* 63100105	TRAFFIC BARRIER TERMINAL, TYPE 10	EACH	1		1					
* 63100167	TRAFFIC BARRIER TERMINAL, TYPE 1 (SPECIAL) TANGENT	EACH	6		6					
63200310	GUARDRAIL REMOVAL	FOOT	4,361	4,361						
63200400	CABLE ROAD GUARD REMOVAL	FOOT	4,622	4,622						
63500105	DELINEATORS	EACH	23		23					
63700280	CONCRETE BARRIER, DOUBLE FACE, 44 INCH HEIGHT	FOOT	342		342					
63700380	CONCRETE BARRIER, VARIABLE CROSS SECTION 44 INCH HEIGHT	FOOT	3,283		3,283					
63700805	CONCRETE BARRIER TRANSITION	FOOT	126	126						
63700900	CONCRETE BARRIER BASE	FOOT	3,625		3,625					
63800920	MODULAR GLARE SCREEN SYSTEM, TEMPORARY	FOOT	3,380	3,380						
64200116	SHOULDER RUMBLE STRIPS, 16 INCH	FOOT	15,935	15,935						

* SPECIALTY ITEMS

USER NAME = default	DESIGNED -	REVISED -
	DRAWN - LAM	REVISED -
PLOT SCALE = #SCALE#	CHECKED - DF	REVISED -
PLOT DATE = 7/15/2020	DATE - 6/25/2020	REVISED -



STATE OF ILLINOIS
DEPARTMENT OF TRANSPORTATION

EB I-80 FROM GARDNER STREET TO ROWELL AVENUE
SUMMARY OF QUANTITIES

SCALE: N.T.S. SHEET 12 OF 23 SHEETS STA. TO STA.

F.A.I. RTE.	SECTION	COUNTY	TOTAL SHEETS	SHEET NO.
80	2013-008B	WILL	511	16
			CONTRACT NO. 60W34	
ILLINOIS FED. AID PROJECT				

REVISION 10/21/2020

					CONSTRUCTION CODE					
					90% FEDERAL, 10% STATE					
CODE NO.	ITEM	UNIT	TOTAL QUANTITY URBAN			BRIDGE	BRIDGE	BRIDGE	BRIDGE	RET WALL
				ROADWAY 0004 URBAN	SAFETY 0021 URBAN	0010	0010	0010	0010	0004
						SN 099-0062	SN 099-0900	SN 099-0901	SN 099-0904	SN 099-Z##1 SN 099-Z##2 SN 099-W034
* 78005110	EPOXY PAVEMENT MARKING - LINE 4"	FOOT	94,411	94,411						
* 78005120	EPOXY PAVEMENT MARKING - LINE 5"	FOOT	9,947	9,947						
* 78005130	EPOXY PAVEMENT MARKING - LINE 6"	FOOT	904	904						
* 78005140	EPOXY PAVEMENT MARKING - LINE 8"	FOOT	30,183	30,183						
* 78005150	EPOXY PAVEMENT MARKING - LINE 12"	FOOT	1,694	1,694						
* 78008210	POLYUREA PAVEMENT MARKING TYPE I - LINE 4"	FOOT	15,573	15,573						
* 78008240	POLYUREA PAVEMENT MARKING TYPE I - LINE 8"	FOOT	10,462	10,462						
* 78008250	POLYUREA PAVEMENT MARKING TYPE I - LINE 12"	FOOT	2,828	2,828						
* 78100100	RAISED REFLECTIVE PAVEMENT MARKER	EACH	328	328						
* 78200005	GUARDRAIL REFLECTORS, TYPE A	EACH	37		37					
* 78200011	BARRIER WALL REFLECTORS, TYPE C	EACH	7,897		7,897					
* 78200021	HIGH TENSION CABLE MEDIAN BARRIER REFLECTORS	EACH	5	5						
* 80400100	ELECTRIC SERVICE INSTALLATION	EACH	1		1					
* 80400200	ELECTRIC UTILITY SERVICE CONNECTION	L SUM	1		1					
* 80500020	SERVICE INSTALLATION - POLE MOUNTED	EACH	1		1					

* SPECIALTY ITEMS

USER NAME = default	DESIGNED -	REVISED -
	DRAWN - LAM	REVISED -
PLOT SCALE = #SCALE#	CHECKED - DF	REVISED -
PLOT DATE = 7/15/2020	DATE - 6/25/2020	REVISED -



STATE OF ILLINOIS
DEPARTMENT OF TRANSPORTATION

EB I-80 FROM GARDNER STREET TO ROWELL AVENUE
SUMMARY OF QUANTITIES

SCALE: N.T.S. SHEET 16 OF 23 SHEETS STA. TO STA.

F.A.I. RTE.	SECTION	COUNTY	TOTAL SHEETS	SHEET NO.
80	2013-008B	WILL	511	20
CONTRACT NO. 60W34				
ILLINOIS FED. AID PROJECT				

REVISED SHEET 10/21/2020

CODE NO.	ITEM	UNIT	TOTAL QUANTITY URBAN	CONSTRUCTION CODE						
				90% FEDERAL, 10% STATE						
				ROADWAY 0004 URBAN	SAFETY 0021 URBAN	BRIDGE 0010 SN 099-0062	BRIDGE 0010 SN 099-0900	BRIDGE 0010 SN 099-0901	BRIDGE 0010 SN 099-0904	RET WALL 0004 SN 099-Z##1 SN 099-Z##2 SN 099-W034
81028240	UNDERGROUND CONDUIT, GALVANIZED STEEL, 4" DIA.	FOOT	702		702					
81028390	UNDERGROUND CONDUIT, PVC, 4" DIA.	FOOT	116		116					
81100320	CONDUIT ATTACHED TO STRUCTURE, 1" DIA., PVC COATED GALVANIZED STEEL	FOOT	820		820					
81100805	CONDUIT ATTACHED TO STRUCTURE, 3" DIA., PVC COATED GALVANIZED STEEL	FOOT	54		54					
81200230	CONDUIT EMBEDDED IN STRUCTURE, 2" DIA., PVC	FOOT	3,850		3,850					
81200270	CONDUIT EMBEDDED IN STRUCTURE, 4" DIA., PVC	FOOT	4,706		4,706					
81300220	JUNCTION BOX, STAINLESS STEEL, ATTACHED TO STRUCTURE, 6" X 6" X 4"	EACH	8		8					
81300530	JUNCTION BOX, STAINLESS STEEL, ATTACHED TO STRUCTURE, 12" X 10" X 6"	EACH	2		2					
81300550	JUNCTION BOX, STAINLESS STEEL, ATTACHED TO STRUCTURE, 12" X 12" X 6"	EACH	8		8					
81300830	JUNCTION BOX, STAINLESS STEEL, ATTACHED TO STRUCTURE, 18" X 18" X 8"	EACH	1		1					
81603071	UNIT DUCT, 600V, 2-1C NO.2, 1/C NO.4 GROUND, (XLP-TYPE USE), 1 1/2" DIA. POLYETHYLENE	FOOT	1,160		1,160					
81603081	UNIT DUCT, 600V, 3-1C NO.2, 1/C NO.4 GROUND, (XLP-TYPE USE), 1 1/2" DIA. POLYETHYLENE	FOOT	9,129		9,129					
81702110	ELECTRIC CABLE IN CONDUIT, 600V (XLP-TYPE USE) 1/C NO. 10	FOOT	3,678		3,678					
81702140	ELECTRIC CABLE IN CONDUIT, 600V (XLP-TYPE USE) 1/C NO. 4	FOOT	1,300		1,300					

* SPECIALTY ITEMS

USER NAME = default	DESIGNED -	REVISED -
	DRAWN - LAM	REVISED -
PLOT SCALE = #SCALE#	CHECKED - DF	REVISED -
PLOT DATE = 7/15/2020	DATE - 6/25/2020	REVISED -




STATE OF ILLINOIS
DEPARTMENT OF TRANSPORTATION

EB I-80 FROM GARDNER STREET TO ROWELL AVENUE
SUMMARY OF QUANTITIES

SCALE: N.T.S. SHEET 17 OF 23 SHEETS STA. TO STA.

F.A.I. RTE. 80	SECTION 2013-008B	COUNTY WILL	TOTAL SHEETS 511	SHEET NO. 21
	CONTRACT NO. 60W34		ILLINOIS FED. AID PROJECT	

REVISED SHEET 10/21/2020 REV-SEP

					CONSTRUCTION CODE					
					90% FEDERAL, 10% STATE					
CODE NO.	ITEM	UNIT	TOTAL QUANTITY URBAN			BRIDGE	BRIDGE	BRIDGE	BRIDGE	RET WALL
				ROADWAY 0004 URBAN	SAFETY 0021 URBAN	0010	0010	0010	0010	0004
						SN 099-0062	SN 099-0900	SN 099-0901	SN 099-0904	SN 099-Z##1 SN 099-Z##2 SN 099-W034
81702150	ELECTRIC CABLE IN CONDUIT, 600V (XLP-TYPE USE) 1/C NO. 2	FOOT	3,669		3,669					
81702220	ELECTRIC CABLE IN CONDUIT, 600V (XLP-TYPE USE) 1/C 350MCM	FOOT	141		141					
81800190	AERIAL CABLE, 2-1/C NO. 2 WITH MESSENGER WIRE	FOOT	6,620		6,620					
81800300	AERIAL CABLE, 3-1/C NO. 2 WITH MESSENGER WIRE	FOOT	1,777		1,777					
82110008	LUMINAIRE, LED, ROADWAY, OUTPUT DESIGNATION H	EACH	50		50					
82110022	LUMINAIRE, LED, UNDERPASS WALLMOUNT, OUTPUT DESIGNATION E 	EACH	8		8					
83050710	LIGHT POLE, ALUMINUM, 47.5 FT. M.H., 6 FT. MAST ARM	EACH	6		6					
83050810	LIGHT POLE, ALUMINUM, 47.5 FT. M.H., 15 FT. MAST ARM	EACH	29		29					
83057355	LIGHT POLE, WOOD, 60 FOOT, CLASS 4, WITH 15FT MAST ARM	EACH	14		14					
83057435	LIGHT POLE, WOOD, 80 FOOT, CLASS 3, WITH 15FT MAST ARM	EACH	10		10					
83600365	LIGHT POLE FOUNDATION, METAL, 15" BOLT CIRCLE, 10" X 8'	EACH	28		28					
83800205	BREAKAWAY DEVICE, TRANSFORMER BASE, 15 INCH BOLT CIRCLE	EACH	28		28					
84100110	REMOVAL OF TEMPORARY LIGHTING UNIT	EACH	10		10					
84200500	REMOVAL OF LIGHTING UNIT, SALVAGE	EACH	25		25					

* SPECIALTY ITEMS

USER NAME = default	DESIGNED -	REVISED -
	DRAWN - LAM	REVISED -
PLOT SCALE = #SCALE#	CHECKED - DF	REVISED -
PLOT DATE = 7/15/2020	DATE - 6/25/2020	REVISED -




STATE OF ILLINOIS
DEPARTMENT OF TRANSPORTATION

EB I-80 FROM GARDNER STREET TO ROWELL AVENUE
SUMMARY OF QUANTITIES

SCALE: N.T.S. SHEET 18 OF 23 SHEETS STA. TO STA.

F.A.I. RTE.	SECTION	COUNTY	TOTAL SHEETS	SHEET NO.
80	2013-008B	WILL	511	22
CONTRACT NO. 60W34				
ILLINOIS FED. AID PROJECT				

 REVISED SHEET 10/21/2020

CODE NO.	ITEM	UNIT	TOTAL QUANTITY URBAN	CONSTRUCTION CODE						
				90% FEDERAL, 10% STATE						
				ROADWAY 0004 URBAN	SAFETY 0021 URBAN	BRIDGE 0010 SN 099-0062	BRIDGE 0010 SN 099-0900	BRIDGE 0010 SN 099-0901	BRIDGE 0010 SN 099-0904	RET WALL 0004 SN 099-Z##1 SN 099-Z##2 SN 099-W034
X7013820	TRAFFIC CONTROL SURVEILLANCE, EXPRESSWAYS	CAL DAY	548	548						
X7030030	WET REFLECTIVE TEMPORARY TAPE TYPE III, 4 INCH	FOOT	83,651	83,651						
X7030035	WET REFLECTIVE TEMPORARY TAPE TYPE III, 5 INCH	FOOT	9,368	9,368						
X7030040	WET REFLECTIVE TEMPORARY TAPE TYPE III, 6 INCH	FOOT	400	400						
X7030045	WET REFLECTIVE TEMPORARY TAPE TYPE III, 8 INCH	FOOT	37,501	37,501						
X7030050	WET REFLECTIVE TEMPORARY TAPE TYPE III, 12 INCH	FOOT	2,742	2,742						
X7040125	PINNING TEMPORARY CONCRETE BARRIER	EACH	8,182	8,182						
X7830070	GROOVING FOR RECESSED PAVEMENT MARKING 5"	FOOT	27,315	27,315						
X7830072	GROOVING FOR RECESSED PAVEMENT MARKING 6"	FOOT	3,279	3,279						
X7830076	GROOVING FOR RECESSED PAVEMENT MARKING 9"	FOOT	11,893	11,893						
X7830078	GROOVING FOR RECESSED PAVEMENT MARKING 13"	FOOT	3,030	3,030						
X8130350	JUNCTION BOX EMBEDDED IN STRUCTURE, SPECIAL	EACH	9		9					
X8251388	LIGHTING CONTROLLER, BASE MOUNTED, 480VOLT, 200AMP (DUAL), RADIO SCADA	EACH	1		1					
X8570000	SMART TRAFFIC MONITORING SYSTEM	L SUM	1	1						
Z0004405	HOT-MIX ASPHALT SCARIFICATION	SQ YD	3,457	3,457						

* SPECIALTY ITEMS

USER NAME = default	DESIGNED -	REVISED -
	DRAWN - LAM	REVISED -
PLOT SCALE = #SCALE#	CHECKED - DF	REVISED -
PLOT DATE = 7/15/2020	DATE - 6/25/2020	REVISED -



STATE OF ILLINOIS
DEPARTMENT OF TRANSPORTATION

EB I-80 FROM GARDNER STREET TO ROWELL AVENUE
SUMMARY OF QUANTITIES









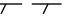
SCALE: N.T.S. SHEET 21 OF 23 SHEETS STA. TO STA.

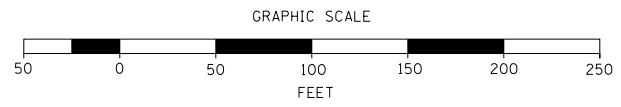
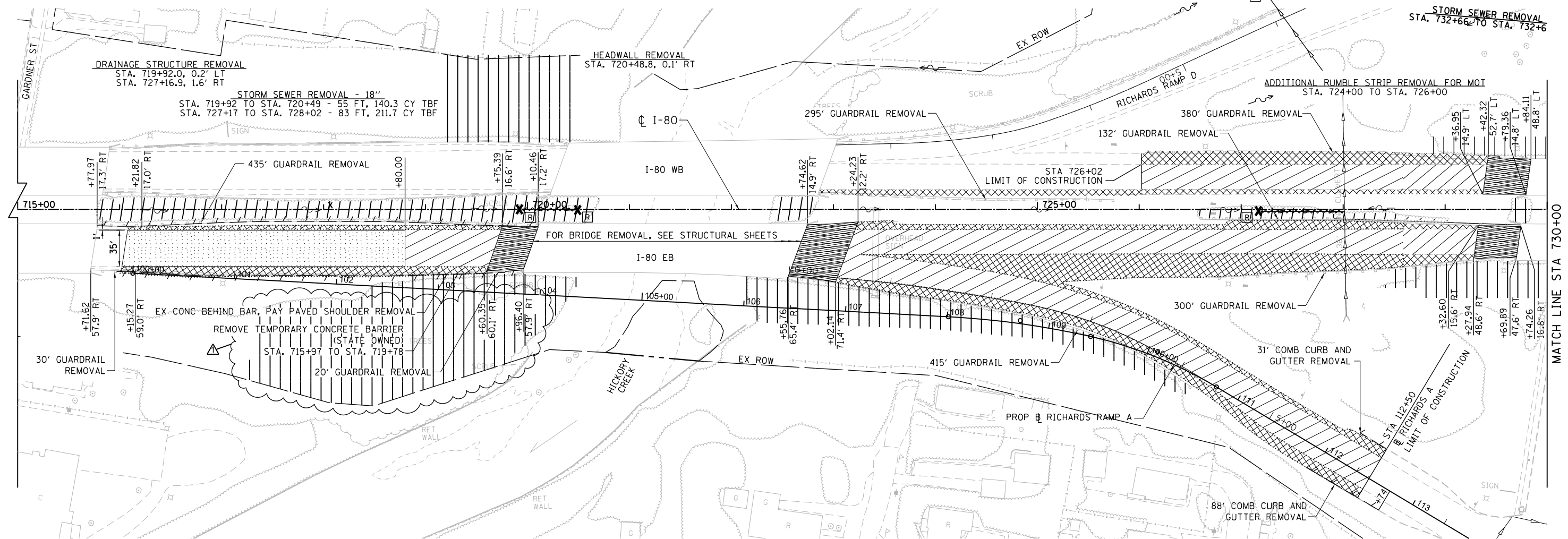
REVISED SHEET 10/21/2020

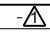
REV-SEP

F.A.I. RTE. 80	SECTION 2013-008B	COUNTY WILL	TOTAL SHEETS 511	SHEET NO. 25
CONTRACT NO. 60W34			ILLINOIS FED. AID PROJECT	

REMOVAL LEGEND

-  PAVEMENT REMOVAL
-  PAVED SHOULDER REMOVAL
-  DRAINAGE STR. REMOVAL
-  ITEM REMOVAL
-  APPROACH SLAB REMOVAL
-  TREE/SHRUB REMOVAL
-  STORM SEWER REMOVAL
-  LINEAR ITEM REMOVAL
-  HMA SURFACE REMOVAL-BUTT JOINT



USER NAME = mamiller	DESIGNED - ATR	REVISED -  ADDENDUM 10/21/20
PLOT SCALE = 100.0000' / in.	DRAWN - ATR	REVISED -
PLOT DATE = 10/19/2020	CHECKED - MAM	REVISED -
FILE NAME = D160W34-sht-removal-01.dgn	DATE - \$DATE	REVISED -



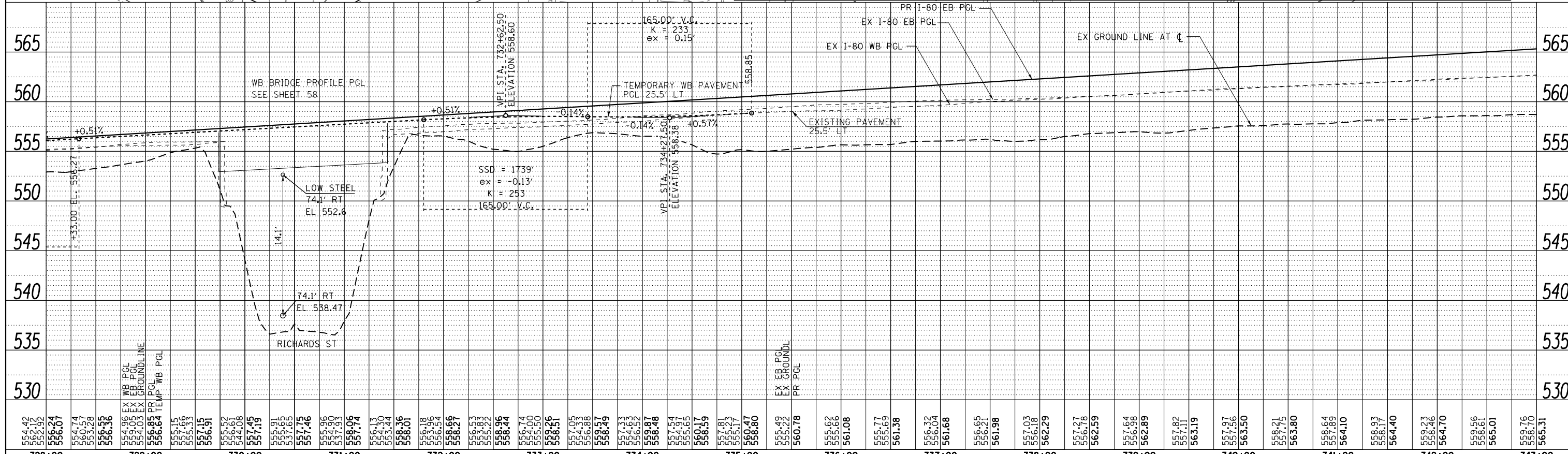
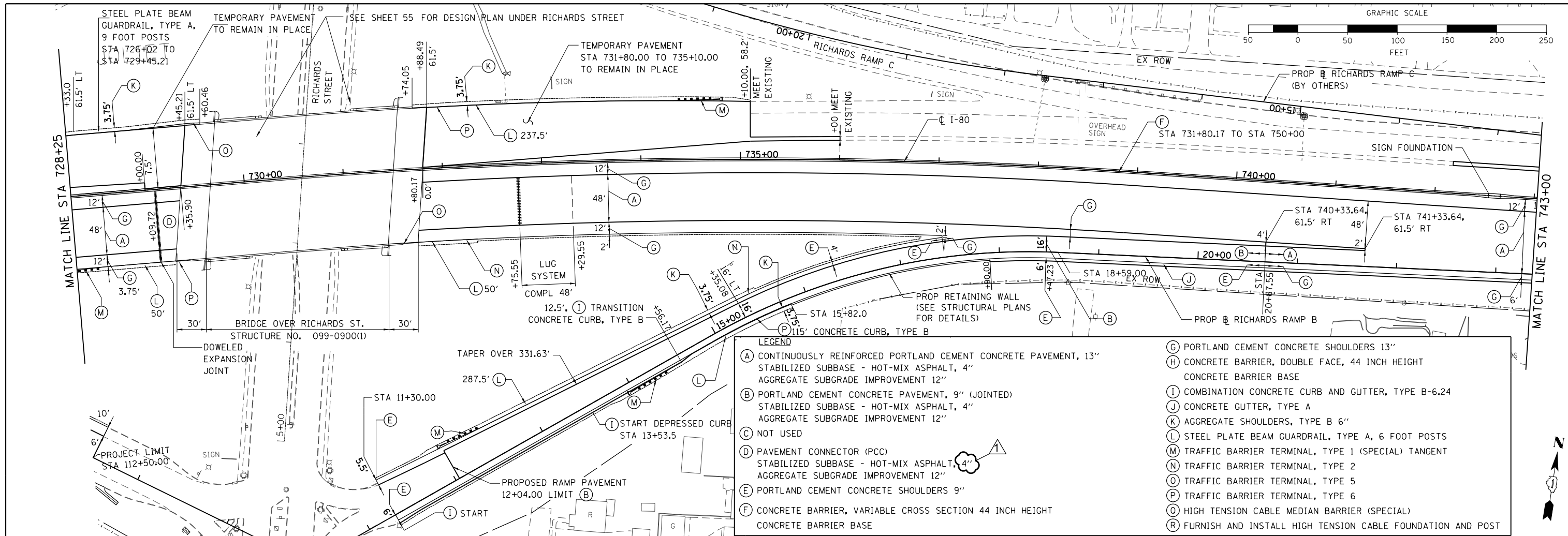
**STATE OF ILLINOIS
DEPARTMENT OF TRANSPORTATION**

**I-80 FROM GARDNER STREET TO ROWELL AVENUE
REMOVAL PLAN**
SCALE: 1" = 50' SHEET 1 OF 3 SHEETS STA. 700+00 TO STA. 730+00

F.A.I. RTE.	SECTION	COUNTY	TOTAL SHEETS	SHEET NO.
80	2013-008B	WILL	511	47
ILLINOIS FED. AID PROJECT			CONTRACT NO. 60W34	

PLAN	SURVEYED	DATE
	PLOTTED	BY
	GRADES CHECKED	
	STRUCTURE NOTATIONS CHECKED	
	NOTE BOOK NO.	
	FILE NAME	

PROFILE	SURVEYED	DATE
	PLOTTED	BY
	GRADES CHECKED	
	STRUCTURE NOTATIONS CHECKED	
	NOTE BOOK NO.	
	FILE NAME	

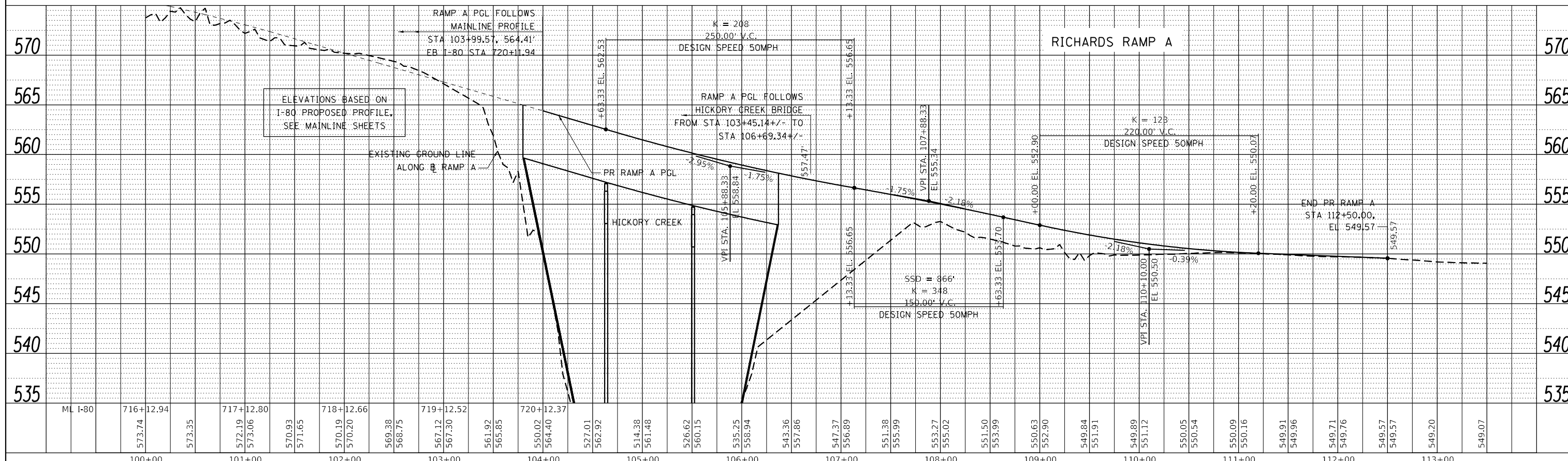
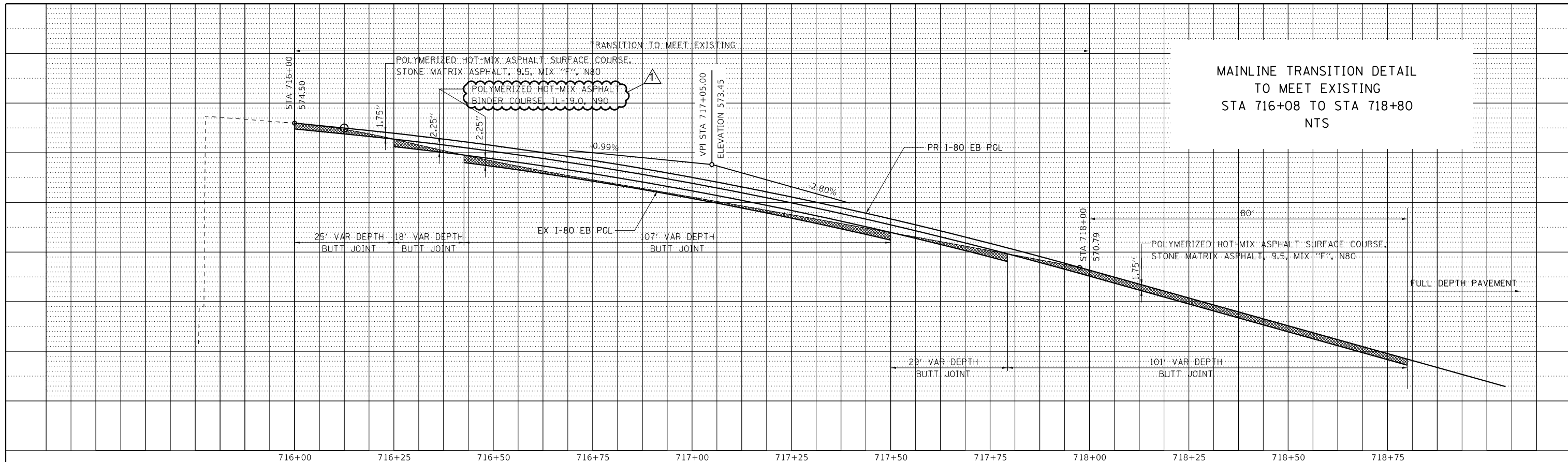


USER NAME = default	DESIGNED - RA	REVISED - ADDENDUM 10/21/2020		STATE OF ILLINOIS DEPARTMENT OF TRANSPORTATION				EB I-80 FROM GARDNER STREET TO ROWELL AVENUE ROADWAY PLAN AND PROFILE				F.A.T. RTE.	SECTION	COUNTY	TOTAL SHEETS	SHEET NO.
PLOT SCALE = *SCALE*	DRAWN - RA	REVISED -		80	2013-008B	WILL	511	51								
PLOT DATE = 10/19/2020	CHECKED - RR	REVISED -		SCALE: 1" = 50'				SHEET 2	OF 5 SHEETS	STA. 728+00	TO STA. 743+00	CONTRACT NO. 60W34				
FILE NAME = c:\cadd\ib\p\roose\greatlakes\dms84827\DI60W34-sht-p\inprf03.dgn	DATE = 6/25/2020	REVISED -		ILLINOIS FED. AID PROJECT												

PLAN	SURVEYED	BY	DATE
	PLOTTED		
	ALIGNED		
	CHECKED		
	FILED		
NOTE BOOK NO.	CADD FILE NAME		

PROFILE	SURVEYED	BY	DATE
	PLOTTED		
	GRADES CHECKED		
	STRUCTURE NOTATIONS OK'D		
NOTE BOOK NO.	CADD FILE NAME		

MAINLINE TRANSITION DETAIL
TO MEET EXISTING
STA 716+08 TO STA 718+80
NTS

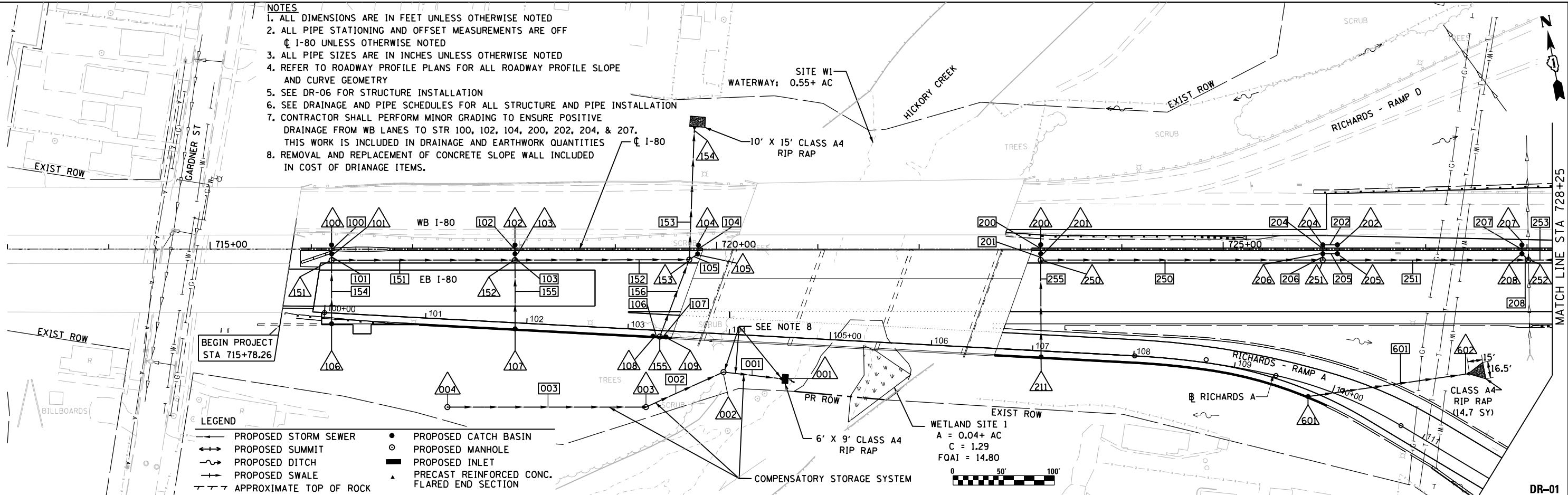


USER NAME = default	DESIGNED - JK	REVISED - ADDENDUM 10/21/2020		STATE OF ILLINOIS DEPARTMENT OF TRANSPORTATION				EB I-80 FROM GARDNER STREET TO ROWELL AVENUE PROPOSED PROFILES - RICHARDS RAMP A				F.A.I. RTE. 80	SECTION 2013-008B	COUNTY WILL	TOTAL SHEETS 511	SHEET NO. 56
PLOT SCALE = *SCALE*	DRAWN - JK	REVISED -		SCALE: N/A				SHEET 1 OF 1 SHEETS				CONTRACT NO. 60W34				
PLOT DATE = 10/19/2020	CHECKED - BU	REVISED -		STA. 127 TO STA. 127				ILLINOIS FED. AID PROJECT								
FILE NAME = c:\cadd\lib\p\roose\greatlakes\dms84827\DI60W34.sht-prof01.dgn	DATE - 6/25/2020	REVISED -														

PLAN	SURVEYED	DATE
	PLOTTED	
	ALIGNED	
	CHECKED	
	NO. _____	
	FILE NAME	

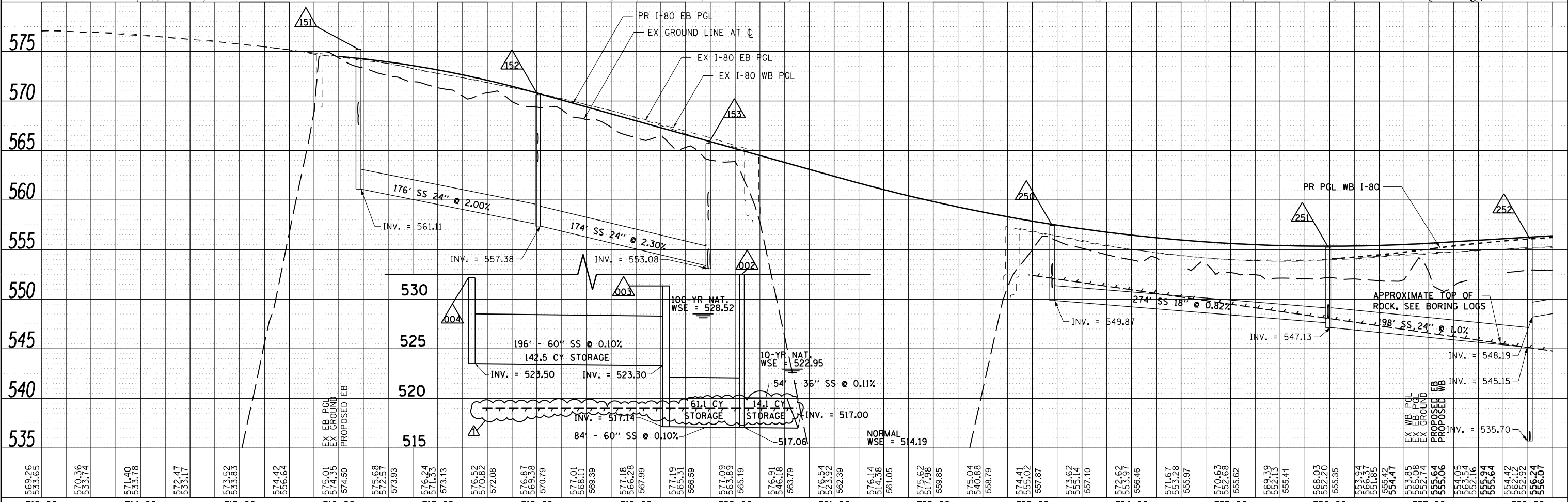
PROFILE	SURVEYED	DATE
	PLOTTED	
	GRADES CHECKED	
	STRUCTURE NOTATIONS OK'D	
	NO. _____	
	FILE NAME	

- NOTES**
1. ALL DIMENSIONS ARE IN FEET UNLESS OTHERWISE NOTED
 2. ALL PIPE STATIONING AND OFFSET MEASUREMENTS ARE OFF ϕ I-80 UNLESS OTHERWISE NOTED
 3. ALL PIPE SIZES ARE IN INCHES UNLESS OTHERWISE NOTED
 4. REFER TO ROADWAY PROFILE PLANS FOR ALL ROADWAY PROFILE SLOPE AND CURVE GEOMETRY
 5. SEE DR-06 FOR STRUCTURE INSTALLATION
 6. SEE DRAINAGE AND PIPE SCHEDULES FOR ALL STRUCTURE AND PIPE INSTALLATION
 7. CONTRACTOR SHALL PERFORM MINOR GRADING TO ENSURE POSITIVE DRAINAGE FROM WB LANES TO STR 100, 102, 104, 200, 202, 204, & 207. THIS WORK IS INCLUDED IN DRAINAGE AND EARTHWORK QUANTITIES
 8. REMOVAL AND REPLACEMENT OF CONCRETE SLOPE WALL INCLUDED IN COST OF DRAINAGE ITEMS.



LEGEND

- PROPOSED STORM SEWER
- PROPOSED SUMMIT
- PROPOSED DITCH
- PROPOSED SWALE
- - - APPROXIMATE TOP OF ROCK
- PROPOSED CATCH BASIN
- PROPOSED MANHOLE
- PROPOSED INLET
- ▲ PRECAST REINFORCED CONC. FLARED END SECTION



569.26	570.36	571.40	572.47	573.52	574.42	575.01	575.68	576.24	576.87	577.01	577.18	577.09	576.91	576.54	576.14	575.62	575.04	574.41	573.62	572.62	571.67	570.63	569.39	568.03	566.94	565.94	564.05	562.74	561.12	559.24	557.61
713+00	714+00	715+00	716+00	717+00	718+00	719+00	720+00	721+00	722+00	723+00	724+00	725+00	726+00	727+00	728+00																
USER NAME = mmiller		DESIGNED - MMK	REVISED - ADDENDUM 10/21/20														EB I-80 FROM GARDNER STREET TO ROWELL AVENUE				SECTION		COUNTY	TOTAL SHEETS	SHEET NO.						
PLOT SCALE = 100.000' / in.		DRAWN - ATR	REVISED -														PROPOSED DRAINAGE PLAN AND PROFILE				80		2013-008B	WILL	511	133					
PLOT DATE = 10/19/2020		CHECKED - MAM	REVISED -														SCALE: 1" = 50'				SHEET 1		OF 5 SHEETS	STA. 715+78.26	TO STA. 728+25	CONTRACT NO. 60W34					
FILE NAME = D150W34-sht-drplnprf01.dgn		DATE - \$DATE	REVISED -																							ILLINOIS FED. AID PROJECT					



STATE OF ILLINOIS
DEPARTMENT OF TRANSPORTATION

EB I-80 FROM GARDNER STREET TO ROWELL AVENUE
PROPOSED DRAINAGE PLAN AND PROFILE

SECTION: 80
COUNTY: WILL
TOTAL SHEETS: 511
SHEET NO.: 133
CONTRACT NO. 60W34
ILLINOIS FED. AID PROJECT

DRAINAGE PIPE DATA

PIPE NO.	DESCRIPTION	SIZE (IN)	LENGTH (FT)	SLOPE (%)	TRENCH BACKFILL	ROCK EXCAVATION	IDOT SHEET NO.	FROM NODE	TO NODE	NOTES
358	STORM SEWERS, CLASS A, TYPE 2	30	195	1.28	320.1	143.4	DR-03	359	358	
359	STORM SEWERS, CLASS A, TYPE 3	30	195	1.50	438.7	154.3	DR-03	360	359	
360	STORM SEWERS, CLASS A, TYPE 2	24	245	1.38	257.2	176.0	DR-03	361	360	
361	STORM SEWERS, CLASS A, TYPE 2	24	254	1.28	370.1	10.2	DR-03	362	361	
362	STORM SEWERS, CLASS A, TYPE 2	18	233	1.30	242.1	0.0	DR-03	363	362	
363	STORM SEWERS, CLASS A, TYPE 2	18	177	1.30	193.6	0.0	DR-03	364	363	
364	STORM SEWERS, CLASS A, TYPE 1	36	75	1.27	1.3	12.0	DR-02	366	351	
365	STORM SEWERS, CLASS A, TYPE 1	42	96	0.42	4.2	63.0	DR-02	351	365	
366	STORM SEWERS, CLASS A, TYPE 2	12	63	1.00	26.7	0.0	DR-03	336	362	
367	STORM SEWERS, CLASS A, TYPE 2	18	63	1.00	25.3	0.0	DR-03	337	363	
400	STORM SEWERS, CLASS A, TYPE 2	12	3	1.00	1.3	0.0	DR-04	400	401	
401	STORM SEWERS, CLASS A, TYPE 2	18	2	1.00	1.4	0.0	DR-04	401	450	
402	STORM SEWERS, CLASS A, TYPE 1	12	3	1.00	1.0	0.0	DR-04	402	403	
403	STORM SEWERS, CLASS A, TYPE 2	15	2	1.00	1.0	0.0	DR-04	403	453	
404	STORM SEWERS, CLASS A, TYPE 1	12	3	1.00	1.0	0.0	DR-04	404	405	
405	STORM SEWERS, CLASS A, TYPE 2	15	2	1.00	1.0	0.0	DR-04	405	454	
406	STORM SEWERS, CLASS A, TYPE 2	12	3	1.00	1.6	0.0	DR-05	406	407	
407	STORM SEWERS, CLASS A, TYPE 2	18	2	1.00	1.6	0.0	DR-05	407	455	
408	STORM SEWERS, CLASS A, TYPE 1	12	3	1.00	1.1	0.0	DR-04	408	456	
450	STORM SEWERS, CLASS A, TYPE 1	24	118	4.24	0.0	0.0	DR-04	451	457	STORM SEWER TO BE JACKED UNDER I-80 WB
451	STORM SEWERS, CLASS A, TYPE 2	18	24	0.12	20.1	0.0	DR-04	450	451	
452	STORM SEWERS, CLASS A, TYPE 2	24	5	4.00	1.9	0.0	DR-04	452	451	
453	STORM SEWERS, CLASS A, TYPE 2	36	206	0.11	122.5	0.0	DR-04	453	452	
454	STORM SEWERS, CLASS A, TYPE 2	36	245	0.11	315.1	0.0	DR-04	454	453	
455	STORM SEWERS, CLASS A, TYPE 2	36	245	0.17	423.9	0.0	DR-04	455	454	
456	STORM SEWERS, CLASS A, TYPE 2	12	55	1.00	27.7	0.0	DR-04	456	450	
457	STORM SEWERS, CLASS A, TYPE 1	24	169	1.00	0.0	0.0	DR-04	EX	451	PROPOSED STORM SEWER CONNECTION TO EXISTING DRAINAGE STRUCTURE AT ELEV. 620.8; STORM SEWER TO BE JACKED UNDER I-80
458	SLOTTED DRAIN, VARIABLE HEIGHT SLOT	12	50	2.01	0.0	0.0	DR-04	PR GROUND	408	SEE DR-08 FOR DETAILS
001	STORM SEWERS, CLASS A, TYPE 2	36	54	0.11	0.0	28.2	DR-01	002	001	PIPE FOR COMPENSATORY STORAGE SYSTEM REMOVAL AND REPLACEMENT OF CONCRETE SLOPEWALL INCLUDED IN THE COST OF 001 AND 002 DRAIN PIPE
002	STORM SEWERS, CLASS A, TYPE 3	60	84	0.10	0.0	42.5	DR-01	003	002	PIPE FOR COMPENSATORY STORAGE SYSTEM
003	STORM SEWERS, CLASS A, TYPE 2	60	196	0.10	0.0	0.0	DR-01	004	003	PIPE FOR COMPENSATORY STORAGE SYSTEM
601	STORM SEWERS, CLASS A, TYPE 1	12	158	1.00	22.1	0.0	DR-01	601	602	

TEMPORARY DRAINAGE PIPE DATA

PIPE NO.	DESCRIPTION	SIZE (IN)	LENGTH (FT)	SLOPE (%)	TRENCH BACKFILL	ROCK EXCAVATION	IDOT SHEET NO.	FROM NODE	TO NODE	NOTES
T01	SLOTTED DRAIN, VARIABLE HEIGHT SLOT	12	183	0.44	0.0	0.0	90	EX GROUND	T01	SEE DR-08 FOR DETAILS
T02	STORM SEWERS, CLASS A, TYPE 1	12	23	0.44	7.9	0.0	90	T01	204	PLACE PLUG IN STR 204 WHEN TEMP PIPE IS REMOVED. COST OF PLUG INCLUDED IN STORM SEWER.
T03	STORM SEWERS, CLASS A, TYPE 1	12	51	0.44	3.6	0.0	91	T02	207	PLACE PLUG IN STR 207 WHEN TEMP PIPE IS REMOVED. COST OF PLUG INCLUDED IN STORM SEWER.
T04	STORM SEWERS, CLASS A, TYPE 1	12	32	0.44	17.1	0.0	91	T03	310	PLACE PLUG IN STR 310 WHEN TEMP PIPE IS REMOVED. COST OF PLUG INCLUDED IN STORM SEWER.
T05	STORM SEWERS, CLASS A, TYPE 1	12	29	0.44	14.1	0.0	91	T04	313	PLACE PLUG IN STR 313 WHEN TEMP PIPE IS REMOVED. COST OF PLUG INCLUDED IN STORM SEWER.
T06	STORM SEWERS, CLASS A, TYPE 1	12	31	0.44	15.6	0.0	92	T05	316	PLACE PLUG IN STR 316 WHEN TEMP PIPE IS REMOVED. COST OF PLUG INCLUDED IN STORM SEWER.
T07	STORM SEWERS, CLASS A, TYPE 1	12	25	0.44	13.4	0.0	92	T06	319	PLACE PLUG IN STR 319 WHEN TEMP PIPE IS REMOVED. COST OF PLUG INCLUDED IN STORM SEWER.
T08	STORM SEWERS, CLASS A, TYPE 1	12	26	0.44	11.8	0.0	92	T07	322	PLACE PLUG IN STR 322 WHEN TEMP PIPE IS REMOVED. COST OF PLUG INCLUDED IN STORM SEWER.

TRANSVERSE PIPE UNDERDRAIN, 6" DATA

APPROX. STATION	DIRECTION (LT/RT)	CONNECT TO STRUCTURE	LENGTH (FT)
716+20	RT	151 & 106	51
718+00	RT	152 & 107	51
719+89	RT	153 & 108	51
723+20	RT	250 & 211	65
725+98.5	RT	251	78
728+02	RT	252	39
728+02	LT	209	39
729+25	RT	253	39
731+85	RT	350	39
732+66	RT	351	39
734+16	RT	352	39
736+16	RT	353	40
738+16	RT	354 & 309	75
740+16	RT	355 & 312	73

TRANSVERSE PIPE UNDERDRAIN, 6" DATA CONT.

APPROX. STATION	DIRECTION (LT/RT)	CONNECT TO STRUCTURE	LENGTH (FT)
742+16	RT	356 & 315	68
744+16	RT	357 & 318	64
746+16	RT	358 & 321	60
748+16	RT	359	56
750+16	RT	360	52
752+66	RT	361	47
755+16	RT	362 & 336	42
757+66	RT	363 & 337	37
766+71	RT	450	44
769+21	RT	453	39
771+71	RT	454	40
774+21	RT	455	40
776+71	RT	456	40

NOTE:

ROCK ELEVATION QUANTITIES ARE APPROXIMATE AND BASED OFF PLAN BORINGS SHOWN IN THE CONTRACT DOCUMENTS BUT SHOULD BE CONFIRMED BY THE ENGINEER IN THE FIELD. ROCK EXCAVATION RELATED TO PLACEMENT OF PROPOSED STORM SEWER WILL BE PAID FOR FOR EACH PIPE SECTION PER SECTION 550.10 AND 502.13 OF THE IDOT SSRBC.

LONGITUDINAL PIPE UNDERDRAIN, 6" DATA

APPROX. START STATION	APPROX. END STATION	DIRECTION (LT/RT)	UP STRM STR	DOWN STRM STR	LENGTH (FT)
715+57.9	716+20.0	LT		151	62
715+51.4	716+20.0	RT		106	69
716+20.0	718+00.0	LT	151	152	180
716+20.0	718+00.0	RT	106	107	180
718+00.0	719+89.0	LT	152	153	189
718+00.0	719+89.0	RT	107	108	189
719+89.0	719+98.9	LT	153		10
723+08.0	723+20.0	LT		250	12
722+93.4	723+20.0	RT		211	27
723+20.0	725+98.5	LT	250	251	279
723+20.0	725+98.5	RT			279
725+98.5	728+02.0	LT	251	252	204
725+98.5	728+02.0	RT			204
728+02.0	729+25.0	LT	253	252	123
728+02.0	729+25.0	RT			123
729+25.0	729+33.1	LT		253	8
731+79.1	731+85.0	LT		350	6
731+34.0	731+85.0	RT			51
731+85.0	732+66.0	LT	350	351	81
731+85.0	732+66.0	RT			81
732+66.0	734+16.0	LT	352	351	150
732+66.0	734+16.0	RT			150
734+16.0	736+16.0	LT	353	352	200
734+16.0	736+16.0	RT			200
736+16.0	738+16.0	LT	354	353	200
736+16.0	738+16.0	RT			200
738+16.0	740+16.0	LT	355	354	200
738+16.0	740+16.0	RT	312	309	200
740+16.0	742+16.0	LT	356	355	200
740+16.0	742+16.0	RT	315	312	200
742+16.0	744+16.0	LT	357	356	200
742+16.0	744+16.0	RT	318	315	200
744+16.0	746+16.0	LT	358	357	200
744+16.0	746+16.0	RT	321	318	200
746+16.0	748+16.0	LT	359	358	200
746+16.0	748+16.0	RT		321	200
748+16.0	750+16.0	LT	360	359	200
748+16.0	750+16.0	RT			200
750+16.0	752+66.0	LT	361	360	250
750+16.0	752+66.0	RT			250
752+66.0	755+16.0	LT	362	361	250
752+66.0	755+16.0	RT			250
755+16.0	757+66.0	LT	363	362	250
755+16.0	757+66.0	RT	337	336	250
757+66.0	759+45.0	LT	364	363	179
757+66.0	759+45.0	RT		337	179
759+45.0	759+62.9	LT		364	18
759+45.0	759+68.3	RT			23
766+03.5	766+71.0	LT		450	68
765+74.6	766+71.0	RT			96
766+71.0	767+00.0	LT	450	451	29
767+00.0	767+10.0	LT	452	451	10
766+71.0	769+21.0	RT			250
767+10.0	769+21.0	LT	453	452	211
769+21.0	771+71.0	LT	454	453	250
769+21.0	771+71.0	RT			250
771+71.0	774+21.0	LT	455	454	250
771+71.0	774+21.0	RT			250
774+21.0	783+35.0	LT		455	914
774+21.0	783+35.0	RT			914

USER NAME = mmiller	DESIGNED - ATR	REVISED - ADDENDUM 10/21/20
	DRAWN - ATR	REVISED -
PLOT SCALE = 2.000' / 1" =	CHECKED - MAM	REVISED -
PLOT DATE = 10/19/2020	DATE - \$DATE	REVISED -



STATE OF ILLINOIS
DEPARTMENT OF TRANSPORTATION

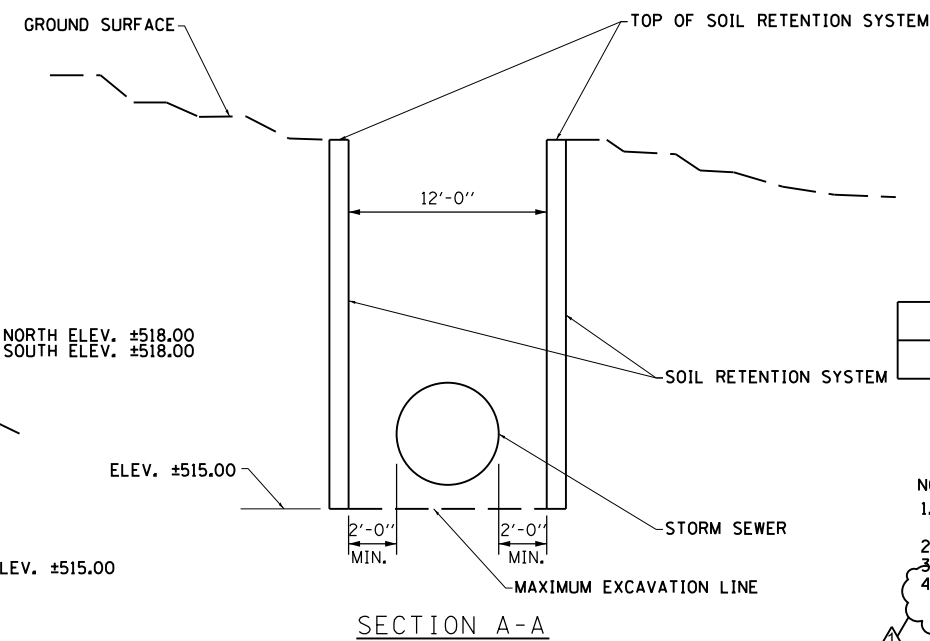
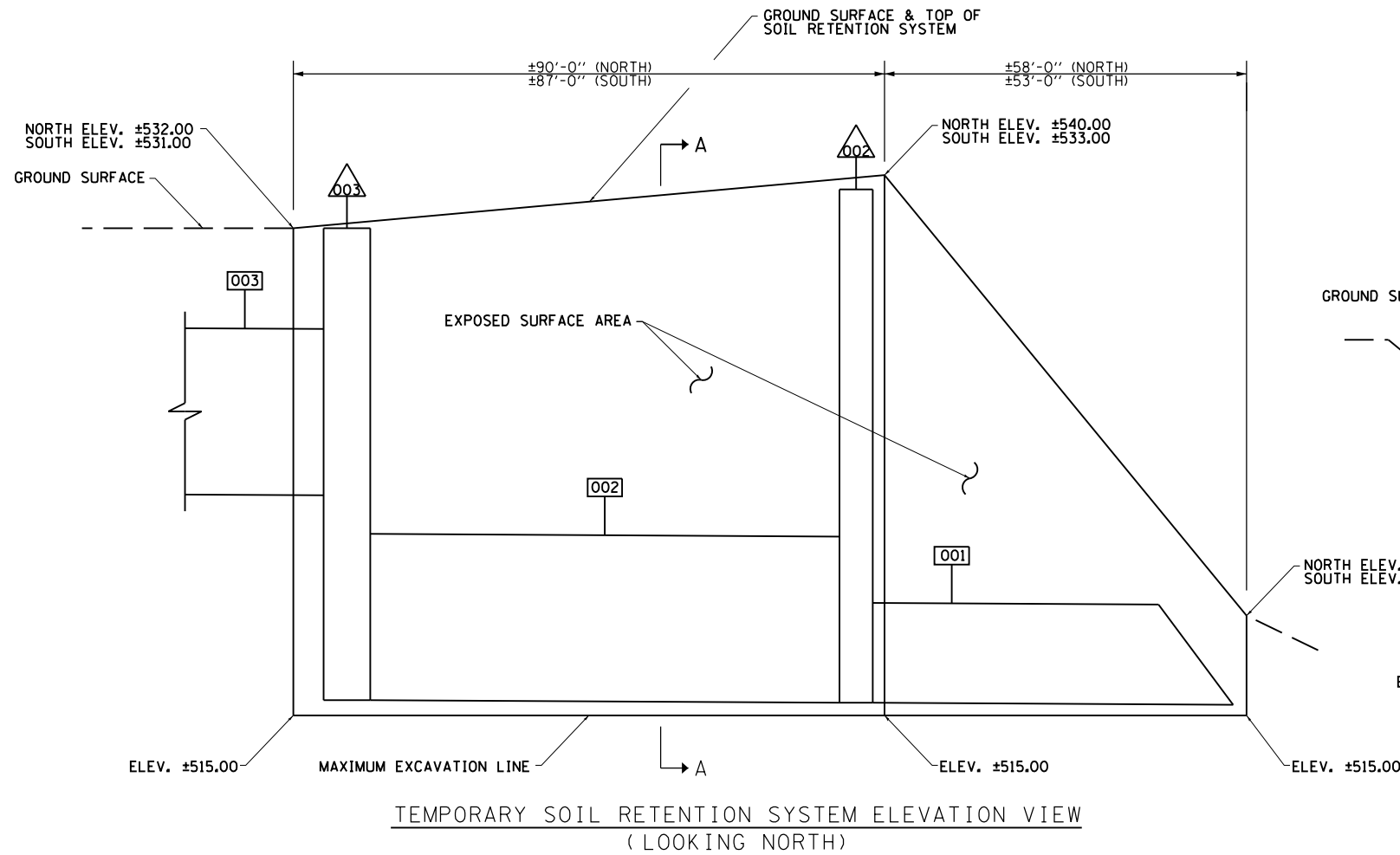
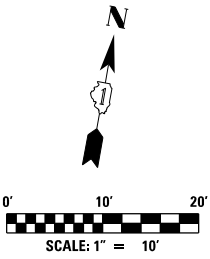
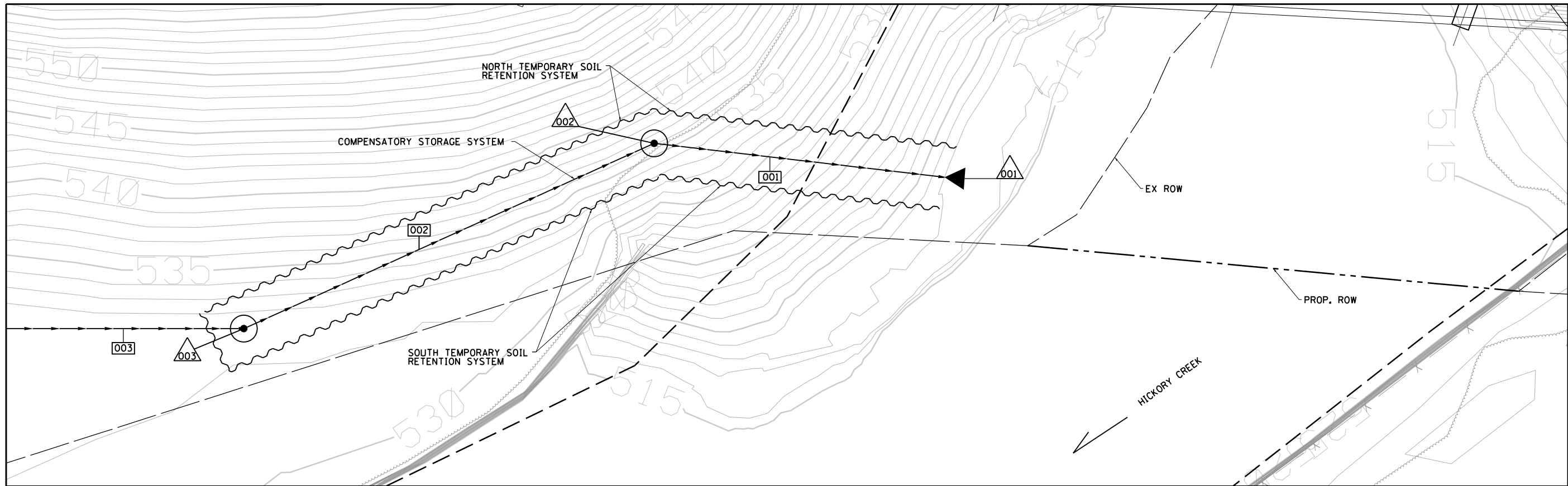
EB I-80 FROM GARDNER STREET TO ROWELL AVENUE
DRAINAGE PIPE SCHEDULE

SCALE: SHEET 2 OF 2 SHEETS STA. TO STA.

F.A.I. RTE.	SECTION	COUNTY	TOTAL SHEETS	SHEET NO.
80	2013-008B	WILL	511	145
ILLINOIS FED. AID PROJECT			CONTRACT NO. 60W34	

PLAN	SURVEYED	DATE
	PLOTTED	BY
	CHECKED	
	FILE NAME	
	NO.	

PROFILE	SURVEYED	DATE
	PLOTTED	BY
	CHECKED	
	NOT AT THIS OFFICE	
	NO.	



BILL OF MATERIAL

ITEM	UNIT	QUANTITY
TEMPORARY SOIL RETENTIN SYSTEM	SO FT	4,936

- NOTES**
- SEE DRAINAGE AND PIPE SCHEDULES FOR ALL STRUCTURE AND PIPE INFORMATION
 - SEE DR-01 FOR FULL PLAN LOCATION
 - SEE DR-06 FOR STRUCTURE INSTALLATION INFORMATION
 - THE CONTRACTOR SHALL NOTE THAT ROCK EXCAVATION VARIES AND IS ESTIMATED BETWEEN ELEVATION 512 AND 518 IN THE AREA. SEE DRAWINGS 235, 286, AND 288 FOR BORING LOG INFORMATION.

FILE NAME = D160W34-sht-drndet25.dgn	USER NAME = mamiller	DESIGNED - APC	REVISED - ADDENDUM 10/21/20
		CHECKED - TAT	REVISED -
	PLOT SCALE = 20.000' / in.	DRAWN - CZ	REVISED -
	PLOT DATE = 10/19/2020	CHECKED - APC	REVISED -

**STATE OF ILLINOIS
DEPARTMENT OF TRANSPORTATION**

**EB I-80 FROM GARDNER STREET TO ROWELL AVENUE
HICKORY CREEK COMPENSATORY TEMPORARY SOIL
RETENTION DETAILS**

SCALE: SHEET 1 OF 1 STA. TO STA.

F.A. RTE.	SECTION	COUNTY	TOTAL SHEETS	SHEET NO.
			511	146
CONTRACT NO.				
FED. ROAD DIST. NO. ILLINOIS FED. AID PROJECT				

DR-14

INDEX OF SHEETS

- 1 General Plan & Elevation
- 2 General Data
- 3 Footing Layout
- 4 Slopewall Plan
- 5 Temporary Soil Retention System
- 6 Stage Construction Details I
- 7 Stage Construction Details II
- 8 Stage Construction Details III
- 9 Temporary Concrete Barrier for Stage Construction
- 10 Top of Slab Elevations I
- 11 Top of Slab Elevations II
- 12 Top of Slab Elevations III
- 13 Top of Slab Elevations IV
- 14 Top of Slab Elevations V
- 15 Top of Slab Elevations VI
- 16 Top of Approach Slab Elevations I
- 17 Top of Approach Slab Elevations II
- 18 Top of Approach Slab Elevations III
- 19 Top of Approach Slab Elevations IV
- 20 Deck Plan I
- 21 Deck Plan II
- 22 Deck Details I
- 23 Deck Details II
- 24 Deck Details III
- 25 West Abutment Diaphragm Details
- 26 East Abutment Diaphragm Details
- 27 Diaphragm Details
- 28 Bridge Approach Slab Details I
- 29 Bridge Approach Slab Details II
- 30 Bridge Approach Slab Details III
- 31 Bridge Approach Slab Details IV
- 32 Bridge Approach Slab Details V
- 33 Bridge Approach Slab Details VI
- 34 Framing Plan
- 35 Structural Steel Details I
- 36 Structural Steel Details II
- 37 Bearing Details
- 38 West Abutment Removal
- 39 East Abutment Removal
- 40 West Abutment Details I
- 41 West Abutment Details II
- 42 East Abutment Details I
- 43 East Abutment Details II
- 44 Abutment Details I
- 45 Abutment Details II
- 46 Pier 1 Removal
- 47 Pier 2 Removal
- 48 Pier 1 Details I
- 49 Pier 1 Details II
- 50 Pier 1 Details III
- 51 Pier 2 Details I
- 52 Pier 2 Details II
- 53 Pier 2 Details III
- 54 Bar Splice Assembly & Mechanical Splicer Details
- 55 Concrete Parapet Slipforming Option
- 56 Boring Logs I
- 57 Boring Logs II
- 58 Boring Logs III
- 59 Boring Logs IV
- 60 Boring Logs V
- 61 Boring Logs VI

GENERAL NOTES

Fasteners shall be ASTM A 325 Type 1, mechanically galvanized bolts. Bolts $\frac{7}{8}$ in. dia., holes $\frac{15}{16}$ in. dia., unless otherwise noted. Calculated weight of Structural Steel = 731,550 pounds (Grade 50) and 57,540 pounds (Grade 36). No field welding is permitted except as specified in the contract documents.

Reinforcement bars designated (E) shall be epoxy coated. If the Contractor elects to use cantilever forming brackets on the exterior beams or girders, the brackets shall be placed at the same locations as required for the hardwood blocks in Article 503.06(b) of the Standard Specifications. If additional cantilever forming brackets are required, hardwood blocking shall be wedged between the exterior and first interior beam at each of these additional bracket locations.

Bearing seat surfaces shall be constructed or adjusted to the designated elevations within a tolerance of $\frac{1}{8}$ inch (0.01 ft.). Adjustment shall be made either by grinding the surface or by shimming the bearings.

Concrete Sealer shall be applied to the designated areas of new abutments and new piers.

The existing structural steel coating contains lead. The contractor shall take appropriate precautions to deal with the presence of lead on this project.

In addition to the requirements of Standard Specifications Article 501.03, the Contractor shall evaluate the condition of the existing protective shield. Such evaluation shall be performed by an Illinois-licensed Structural Engineer. If structurally adequate, the existing protective shield shall remain in place for demolition of the existing bridge deck; if not, the protective shield shall be replaced prior to demolition. The cost of evaluation and any new protective shield is included in Protective Shield.

The removal and disposal of the existing protective shielding shall be included in the cost of Removal of Existing Structures No. 2.

The Inorganic Zinc Rich Primer / Acrylic / Acrylic Paint System shall be used for shop and field painting of new structural steel except where otherwise noted. The color of the final finish coat for all interior steel surfaces shall be gray, Munsell No. 5B 7/1. The color of the final finish coat for the exterior and bottom flange of the fascia beams shall be Reddish Brown, Munsell No. 2.5YR 3/4.

The embankment configuration shown shall be the minimum that must be placed and compacted prior to construction of the abutments.

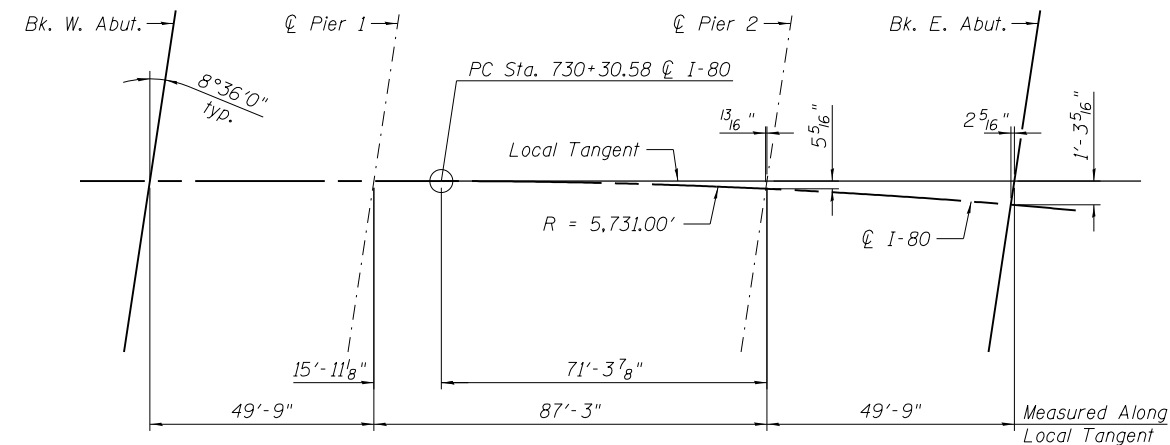
Slope wall shall be reinforced with welded wire fabric, 6 in. x 6 in. W4.0 x W4.0, weighing 58 lbs. per 100 sq. ft.

Plan dimensions and details relative to existing plans are subject to nominal construction variations. The Contractor shall field verify existing dimensions and details affecting new construction and make necessary approved adjustments prior to construction or ordering of materials. Such variations shall not be cause for additional compensation for a change in scope of the work, however, the Contractor will be paid for the quantity actually furnished at the unit price bid for the work.

Protective shield shall be installed under the superstructure to be removed for the full length of the bridge. The lateral width limits should be extended at minimum 2 ft. outside edge of the existing bridge.

TOTAL BILL OF MATERIAL

Item	Unit	S.N. 099-0900 (EB)		S.N. 099-0901 (WB)		Total
		Super	Sub	Super	Sub	
Removal of Existing Structures No. 1	Each	0.5	0.5	0.5	0.5	2
Protective Shield	Sq. Yd.	1,503		1,268		2,771
Structure Excavation	Cu. Yd.		1,411		1,281	2,692
Rock Excavation for Structures	Cu. Yd.		370		153	523
Concrete Structures	Cu. Yd.		682		597	1,279
Concrete Superstructure	Cu. Yd.	486		425		911
Bridge Deck Grooving	Sq. Yd.	1,903		1,573		3,476
Protective Coat	Sq. Yd.	2,367		2,115		4,482
Concrete Superstructure (Approach Slab)	Cu. Yd.	244		207		451
Furnishing and Erecting Structural Steel	L. Sum	0.1		0.1		0.2
Stud Shear Connectors	Each	13,248		11,040		24,288
Reinforcement Bars, Epoxy Coated	Pound	177,420	84,530	158,120	82,940	503,010
Bar Splicers	Each	884	194	884	192	2,154
Slope Wall 4 Inch	Sq. Yd.		810		700	1,510
Name Plates	Each	1		1		2
Drilled Shaft in Soil	Cu. Yd.		15		16	31
Drilled Shaft in Rock	Cu. Yd.		4		4	8
Preformed Joint Seal, 2 1/2"	Foot	93		93		186
Elastomeric Bearing Assembly, Type I	Each	36		30		66
Anchor Bolts, 1 1/4"	Each		96		80	176
Temporary Soil Retention System	Sq. Ft.		138		219	357
Granular Backfill for Structures	Cu. Yd.		397		358	755
Concrete Sealer	Sq. Ft.		8,092		6,668	14,760
Geocomposite Wall Drain	Sq. Yd.		165		143	308
Temporary Soil Retention System (To Remain In Place)	Sq. Ft.		113		211	324
Pipe Underdrains for Structures 4"	Foot		164		164	328
Temporary Support System	Each		2		2	4



OFFSET SKETCH

STATION 730+58.37
 BUILT 20__ BY
 STATE OF ILLINOIS
 F.A.I. RTE. 80 SEC. 2013-008B
 LOADING HL-93
 STRUCTURE NO. 099-0900

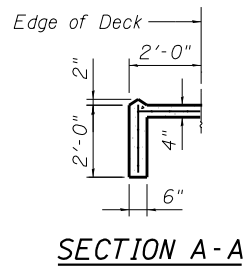
NAME PLATE (EB)
 See Std. 515001

STATION 730+58.37
 BUILT 20__ BY
 STATE OF ILLINOIS
 F.A.I. RTE. 80 SEC. 2013-008B
 LOADING HL-93
 STRUCTURE NO. 099-0901

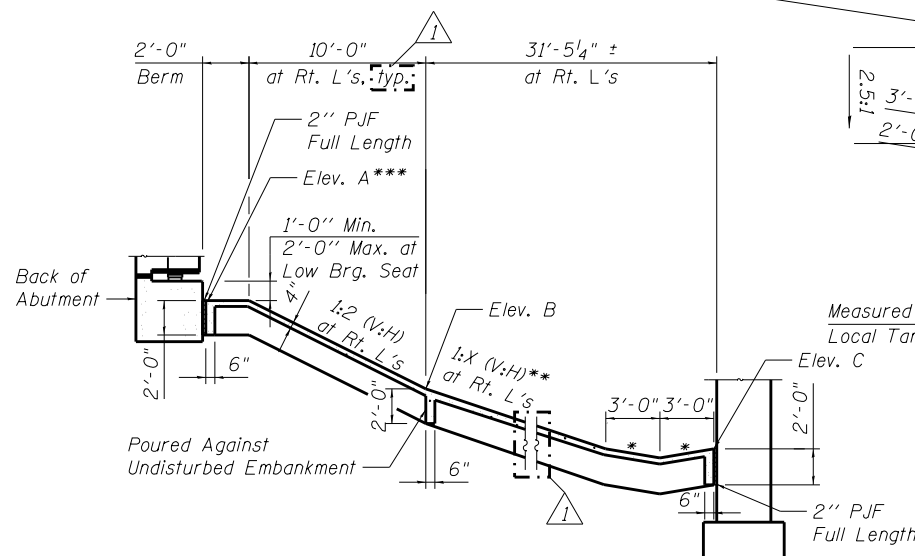
NAME PLATE (WB)
 See Std. 515001

SLOPE WALL ELEVATIONS

Location	Elev. A	Elev. B	Elev. C
West Slope Wall			
South Edge	551.26	546.26	538.07
North Edge	552.05	547.05	538.07
East Slope Wall			
South Edge	551.76	546.76	537.87
Beam 10	552.36	547.36	537.87
North Edge	553.31	548.31	537.87

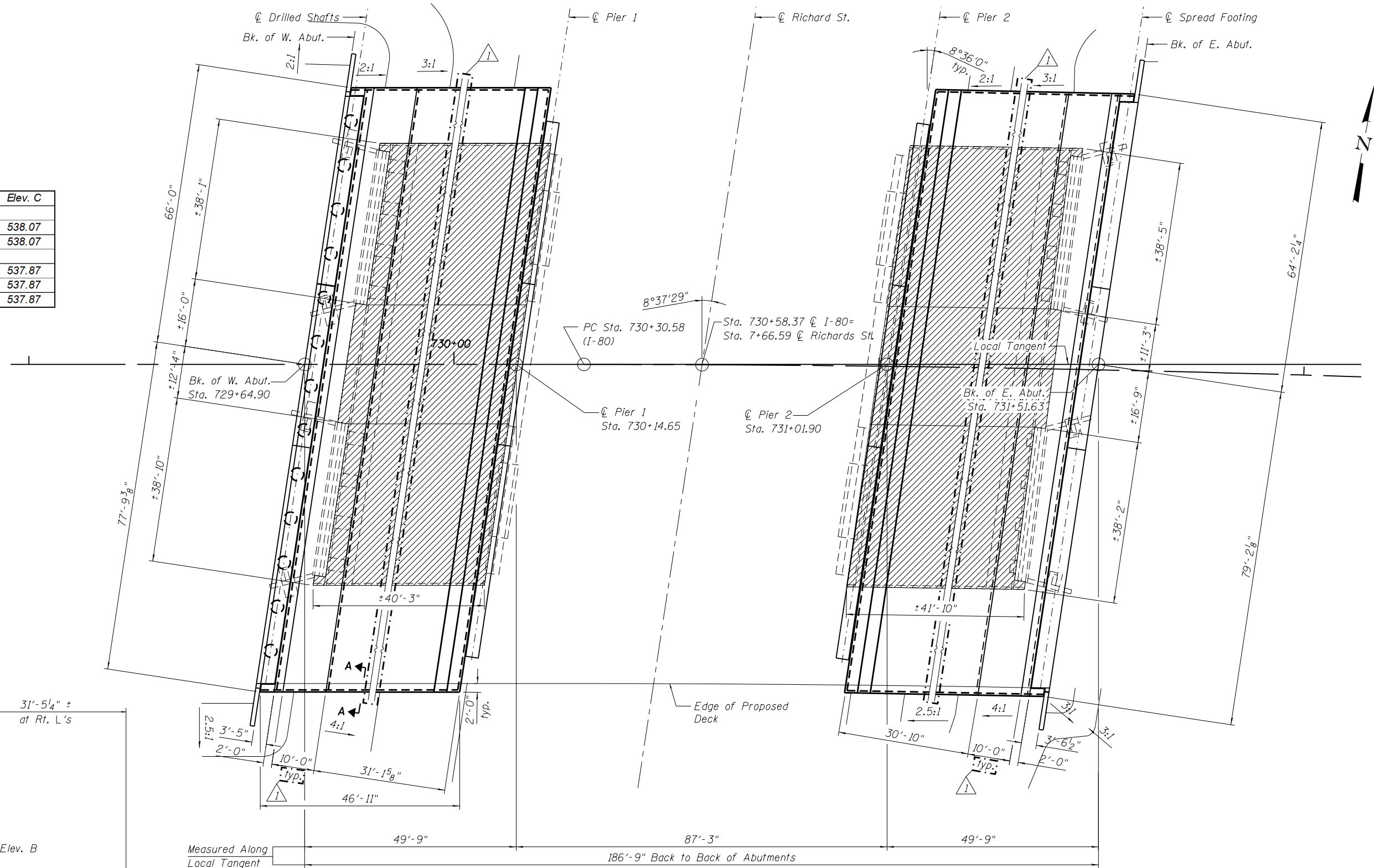


SECTION A-A



SECTION THRU CONCRETE SLOPEWALL

* 1:6 (V:H)
 ** X varies from 3.0 to 3.1 at West slope wall and from 2.4 to 2.8 at East slope wall.
 *** The berm shall be sloped 1/2 in. per ft. to drain.



SLOPEWALL PLAN

BILL OF MATERIAL

Item	Unit	Total
Slope Wall 4 inch	Sy. Yd.	1,510

- Notes:
- Hatched areas indicate Slope Wall Removal.
 - Removal of the slope wall is included in the cost of REMOVAL OF EXISTING STRUCTURES NO. 1.
 - For grading, see I-80 at Richards Street Bridge Grading Plan.



USER NAME = default	DESIGNED MSL	REVISED ADDENDUM 10/21/2020
PLOT SCALE = NTS	CHECKED TAH	REVISED
PLOT DATE = 6/25/2020	DRAWN RMH	REVISED
	CHECKED YC	REVISED

**STATE OF ILLINOIS
 DEPARTMENT OF TRANSPORTATION**

**FOOTING LAYOUT
 STRUCTURE NOS. 099-0900 (E.B.) & 099-0901(W.B.)**

SHEET NO. 4 OF 61 SHEETS

F.A.I. RTE. 80	SECTION 2013-008B	COUNTY WILL	TOTAL SHEETS 511	SHEET NO. 293
CONTRACT NO. 60W34				
ILLINOIS FED. AID PROJECT				