

11-06-2020 LETTING ITEM 068

STATE OF ILLINOIS  
DEPARTMENT OF TRANSPORTATION

F.A. RTE.	SECTION	COUNTY	TOTAL SHEETS	SHEET NO.
0167	19-00014-00-SW	MCHENRY	18	1
FED. ROAD DIST. NO 1	ILLINOIS	CONTRACT NO. 61G72		

FOR INDEX OF SHEETS, SEE SHEET NO. 2  
FOR LIST OF HIGHWAY STANDARDS SEE SHEET NO. 2

**TRAFFIC DATA**

ADT: CHAPEL HILL ROAD      TRAFFIC: 11,900 VPD (2017)

**ROADWAY**

CHAPEL HILL ROAD      SPEED POSTED: 30 MPH      DESIGN SPEED: 30 MPH

**DESIGN DESIGNATION**

FAU 0167 (CHAPEL HILL ROAD) - MINOR ARTERIAL

# PLANS FOR PROPOSED FEDERAL-AID HIGHWAY

FAU 0167 (CHAPEL HILL ROAD)  
FROM FAIRVIEW AVENUE TO NORTHWEST OF REED AVENUE  
SAFE ROUTES TO SCHOOL SIDEWALK IMPROVEMENTS

SECTION: 19-00014-00-SW  
PROJECT: H5GF(604)  
JOHNSBURG  
MCHENRY COUNTY  
C-91-121-20

PROJECT LOCATION MAP  
MCHENRY COUNTY, ILLINOIS  
N.T.S.



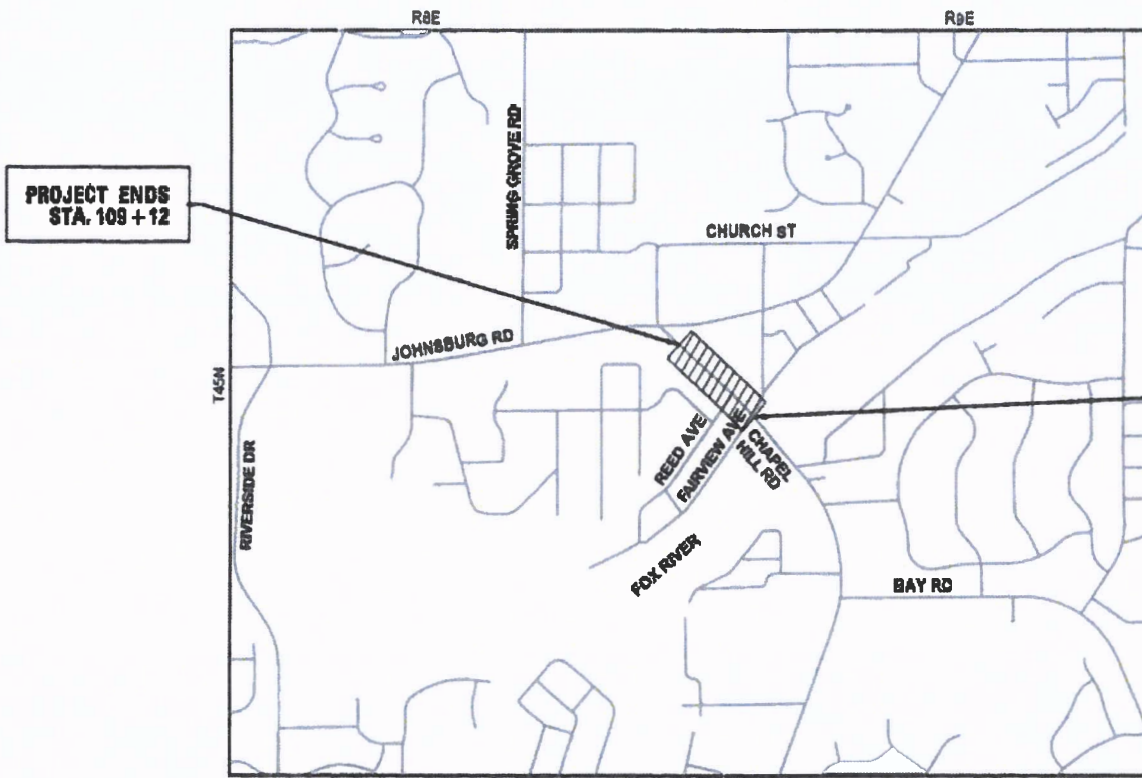
**JULIE**  
JOINT  
UTILITY  
LOCATION  
INFORMATION FOR  
EXCAVATION  
CALL 811



Know what's below.  
Call before you dig.



PULL SIZE PLANS HAVE BEEN PREPARED USING STANDARD ENGINEERING SCALES. REDUCED SIZED PLANS WILL NOT CONFORM TO STANDARD SCALES. IN MAKING MEASUREMENTS ON REDUCED PLANS, THE ABOVE SCALES MAY BE USED.



*B. D. Hartman*  
BENJAMIN D. HARTMAN, P.E.  
EXPIRES: 11-30-21



420 NORTH FRONT STREET, SUITE 100 | MCHENRY, ILLINOIS 60050  
Phone: 815.385.1778 | Toll Free: 800.728.7905 | Fax: 815.385.1781 | HRGreen.com  
ILLINOIS PROFESSIONAL DESIGN FIRM #184-001322

STATE OF ILLINOIS  
DEPARTMENT OF TRANSPORTATION

APPROVED: JULY 24 2020  
*Christina Soliak*  
VILLAGE ADMINISTRATOR, JOHNSBURG

PASSED: AUG 18 2020  
*C. A. Lode*  
DISTRICT ONE ENGINEER OF LOCAL ROADS AND STREETS

RELEASING FOR BID  
BASED ON LIMITED REVIEW: AUGUST 18 2020  
*Anthony J. Quigley*  
REGIONAL ENGINEER

PROJECT ENGINEER: B. HARTMAN  
PROJECT MANAGER: A. CHAUDHRY  
CONTRACT NO. 61G72

PROJECT LENGTH  
NET AND GROSS LENGTH OF PROJECT = 906 FEET = 0.172 MILES

PRINTED BY THE AUTHORITY  
OF THE STATE OF ILLINOIS

FEDERAL AID PROGRAM ENGINEER: CARMEN E. RAMOS, P.E., SCHAUMBURG, IL

## INDEX OF SHEETS

1	COVER SHEET
2	GENERAL NOTES, INDEX OF SHEETS, AND LISTS OF STANDARDS
3 - 4	SUMMARY OF QUANTITIES
5	TYPICAL SECTIONS
6	ALIGNMENT, TIES, AND BENCHMARKS
7	REMOVAL PLANS
8 - 9	SIDEWALK PLAN AND PROFILE
10	EROSION AND SEDIMENT CONTROL DETAILS
11 - 12	SIDEWALK RAMP DETAILS
13 - 15	IDOT DISTRICT 1 DETAILS
16 - 18	CROSS SECTIONS

## DISTRICT ONE DETAILS

STANDARD NO.	LIST OF DESCRIPTION
TC-10	TRAFFIC CONTROL AND PROTECTION FOR SIDE ROADS, INTERSECTIONS, AND DRIVEWAYS
TC-13	DISTRICT ONE TYPICAL PAVEMENT MARKINGS
TC-22	ARTERIAL ROAD INFORMATION SIGN

## STATE STANDARDS

STANDARD NO.	LIST OF DESCRIPTION
000001-07	STANDARD SYMBOLS, ABBREVIATIONS AND PATTERNS
001006-00	DECIMAL OF AN INCH AND OF A FOOT
280001-07	TEMPORARY EROSION CONTROL SYSTEMS
424001-11	PERPENDICULAR CURB RAMPS FOR SIDEWALKS
424016-05	MID-BLOCK CURB RAMPS FOR SIDEWALKS
424021-05	DEPRESSED CORNER FOR SIDEWALKS
606001-07	CONCRETE CURB TYPE B AND COMBINATION CONCRETE CURB AND GUTTER
701001-02	OFF-ROAD OPERATIONS, 2L, 2W, MORE THAN 15' (4.5 M) AWAY
701006-05	OFF-ROAD OPERATIONS, 2L, 2W, 15' (4.5 M) TO 24" (600 MM) FROM PAVEMENT EDGE
701301-04	LANE CLOSURE, 2L, 2W, SHORT TIME OPERATIONS
701311-03	LANE CLOSURE, 2L, 2W, MOVING OPERATIONS-DAY ONLY
701501-06	URBAN LANE CLOSURE, 2L, 2W, UNDIVIDED
701801-06	SIDEWALK, CORNER OR CROSSWALK CLOSURE
701901-08	TRAFFIC CONTROL DEVICES
720001-01	SIGN PANEL MOUNTING DETAILS
720006-04	SIGN PANEL ERECTION DETAILS
728001-01	TELESCOPING STEEL SIGN SUPPORT

## GENERAL NOTES

- ALL REFERENCES TO "STANDARD SPECIFICATIONS" IN THESE GENERAL NOTES SHALL BE INTERPRETED TO MEAN "STANDARD SPECIFICATIONS FOR ROAD AND BRIDGE CONSTRUCTION" ADOPTED BY THE ILLINOIS DEPARTMENT OF TRANSPORTATION, APRIL 1, 2016. ALL WORK TO BE COMPLETED IN ACCORDANCE WITH THE "SUPPLEMENTAL SPECIFICATIONS AND RECURRING SPECIAL PROVISIONS" ADOPTED JANUARY 1, 2020, THE "MANUAL ON UNIFORM TRAFFIC CONTROL DEVICES FOR STREETS AND HIGHWAYS", THE "MANUAL OF TEST PROCEDURES FOR MATERIALS", AND THE "STANDARD SPECIFICATIONS FOR WATER AND SEWER MAIN CONSTRUCTION IN ILLINOIS". ANY REFERENCE TO "STANDARDS" THROUGHOUT THE PLANS OR SPECIAL PROVISIONS SHALL BE INTERPRETED AS THE LATEST STANDARDS.
- IT IS THE CONTRACTOR'S RESPONSIBILITY TO ASCERTAIN EXISTING FIELD CONDITIONS PRIOR TO BIDDING ON THE PROJECT.
- THE CONTRACTOR SHALL NOTIFY THE RESIDENT ENGINEER AT LEAST 72 HOURS PRIOR TO BEGINNING WORK.
- ALL ELEVATIONS SHOWN ON THE PLANS ARE ON THE NAVD88 DATUM.
- SAW CUTTING WILL BE REQUIRED FOR ALL REMOVAL ITEMS AND SHALL BE TO FULL DEPTH AND SHALL RESULT IN A CLEAN STRAIGHT EDGE IN THE PORTION REMAINING.
- THE ELEVATIONS SHOWN ON THE PLANS ARE FINISHED GRADES OF PROPOSED PAVEMENT/SIDEWALK, UNLESS OTHERWISE NOTED.

## STORM SEWERS, SANITARY SEWER, AND UTILITIES

- THE CONTRACTOR SHALL BE RESPONSIBLE FOR CONTACTING THE OWNERS OF ALL UTILITIES PRIOR TO CONSTRUCTION TO DETERMINE THE LOCATION OF ALL UTILITY EQUIPMENT. THE CONTRACTOR SHALL COOPERATE WITH ALL UTILITY OWNERS IN ACCORDANCE WITH THE STANDARD SPECIFICATIONS IF UTILITY RELOCATION, ADJUSTMENT, OR PROTECTION IS NECESSARY.
- THE LOCATION OF EXISTING DRAINAGE STRUCTURES, STORM SEWERS, WATER MAINS, SANITARY SEWERS, AND ANY OTHER PUBLIC OR PRIVATE UTILITIES AS SHOWN ON THE PLANS IS APPROXIMATE AND THEIR EXACT LOCATION IS TO BE DETERMINED IN THE FIELD BY THE CONTRACTOR.
- THE CONTRACTOR SHALL BE RESPONSIBLE FOR THE PROTECTION OF ALL UNDERGROUND AND SURFACE UTILITIES EVEN THOUGH THEY MIGHT NOT BE SHOWN ON THE PLANS. ANY UTILITY PROPERTY DAMAGED DURING CONSTRUCTION SHALL BE REPAIRED OR REPLACED TO THE SATISFACTION OF THE ENGINEER.
- WHEN EXISTING DRAINAGE FACILITIES ARE DISTURBED, THE CONTRACTOR SHALL PROVIDE AND MAINTAIN, IN AN OPERATING CONDITION, TEMPORARY OUTLETS AND CONNECTIONS FOR ALL DRAINS, SEWERS, AND CATCH BASINS. THE CONTRACTOR SHALL PROVIDE FACILITIES WHICH HAVE THE CAPACITY TO RECEIVE AND DISCHARGE THE STORM WATER FLOW RATES NORMALLY ACCEPTED AND RELEASED BY THE EXISTING DRAINAGE FACILITIES.
- IN THE EVENT THAT ANY PORTION OF A PREVIOUSLY UTILIZED SEPTIC SYSTEM IS ENCOUNTERED IN THE COURSE OF CONSTRUCTION, THE MCHENRY COUNTY HEALTH DEPARTMENT SHALL BE IMMEDIATELY NOTIFIED AND REMOVAL/ABANDONMENT SHALL BE ACCOMPLISHED IN ACCORDANCE WITH THEIR DIRECTIONS, INSPECTIONS, AND SIGN OFFS.

## SIGNING AND STRIPING

- SEE IDOT DISTRICT ONE DETAILS AND PLAN SHEETS FOR PAVEMENT MARKING DETAILS.
- LONGER POSTS MAY BE REQUIRED AT SOME TEMPORARY OR PERMANENT SIGN LOCATIONS TO MAINTAIN PROPER SIGN ELEVATIONS. THIS WORK SHALL BE COMPLETED IN ACCORDANCE WITH SECTION 729 OF THE STANDARD SPECIFICATIONS.

## SEDIMENTATION AND EROSION CONTROL

- CONTROL MEASURES SHALL MEET THE MINIMUM STANDARDS AND SPECIFICATIONS OF THE ILLINOIS URBAN MANUAL (WWW.AISWCD.ORG/IUM) UNLESS STATED OTHERWISE.
- STABILIZATION OF DISTURBED AREAS SHALL BE INITIATED IMMEDIATELY WHENEVER ANY CLEARING, GRADING, EXCAVATING OR OTHER EARTH DISTURBING ACTIVITIES HAVE PERMANENTLY CEASED ON ANY PORTION OF THE DEVELOPMENT SITE, OR TEMPORARILY CEASED ON ANY PORTION OF THE DEVELOPMENT SITE AND WILL NOT RESUME FOR A PERIOD EXCEEDING 14 CALENDAR DAYS. STABILIZATION OF DISTURBED AREAS SHALL BE INITIATED WITHIN 1 WORKING DAY OF PERMANENT OR TEMPORARY CESSATION OF EARTH DISTURBING ACTIVITIES AND SHALL BE COMPLETED AS SOON AS POSSIBLE, BUT NOT LATER THAN 14 CALENDAR DAYS FROM THE INITIATION OF STABILIZATION WORK IN AN AREA. EXCEPTIONS TO THESE TIME FRAMES ARE SPECIFIED BELOW: A) WHERE THE INITIATION OF STABILIZATION MEASURES IS PRECLUDED BY SNOW COVER, STABILIZATION MEASURES SHALL BE INITIATED AS SOON AS PRACTICABLE; AND B) IN AREAS WHERE CONSTRUCTION ACTIVITY HAS TEMPORARILY CEASED AND WILL RESUME AFTER 14 DAYS, A TEMPORARY STABILIZATION METHOD MAY BE USED.
- PERIMETER CONTROL MEASURES SHALL BE PROVIDED DOWNSLOPE AND PERPENDICULAR TO THE FLOW OF RUNOFF FROM DISTURBED AREAS, WHERE THE TRIBUTARY AREA IS GREATER THAN 5,000 SQUARE FEET, AND WHERE RUNOFF WILL FLOW IN A SHEET FLOW MANNER.
- ALL TEMPORARY SOIL EROSION AND SEDIMENT CONTROL MEASURES SHALL BE REMOVED WITHIN 30 DAYS AFTER FINAL STABILIZATION OF THE DEVELOPMENT SITE IS ACHIEVED OR AFTER THE TEMPORARY MEASURES ARE NO LONGER NECESSARY. TRAPPED SEDIMENT SHALL BE REMOVED AND DISTURBED AREAS SHALL BE PERMANENTLY STABILIZED.
- ADEQUATE RECEPTACLES SHALL BE PROVIDED FOR THE DEPOSITING OF ALL CONSTRUCTION MATERIAL DEBRIS GENERATED DURING THE DEVELOPMENT PROCESS. THE APPLICANT SHALL NOT CAUSE OR PERMIT THE DUMPING, DEPOSITING, DROPPING, THROWING, DISCARDING OR LEAVING OF CONSTRUCTION MATERIAL DEBRIS UPON OR INTO ANY DEVELOPMENT SITE, CHANNEL, OR IWM. THE DEVELOPMENT SITE SHALL BE MAINTAINED FREE OF CONSTRUCTION MATERIAL DEBRIS.

HRG PROJECT NO.: 191040  
 HRG PROJ. CONTACT:  
 FILE NAME: 191040-S17-gem-01.dgn  
 PEN TABLE: 191040.tbl



USER NAME = bhartha	DESIGNED - BH	REVISED -
	DRAWN - DMS	REVISED -
PLOT SCALE =	CHECKED -	REVISED -
PLOT DATE = 8/25/2020	DATE - 7/24/2020	REVISED -

STATE OF ILLINOIS  
 DEPARTMENT OF TRANSPORTATION

INDEX OF SHEETS, HIGHWAY STANDARDS & GENERAL NOTES  
 CHAPEL HILL ROAD

SCALE: N.T.S. SHEET 1 OF 1 SHEETS STA. TO STA.

F.A.U. RTE.	SECTION NO.	COUNTY	TOTAL SHEETS	SHEET NO.
0167	19-00014-00-SW	MCHENRY	18	2
CONTRACT NO. 61G72				
FED. ROAD DIST. NO.		ILLINOIS FED. AID PROJECT		

CODE NO.	ITEM	UNIT	TOTAL QUANTITY	CONSTR. CODE
				SRTS FUNDS 100% FED ROADWAY 0021 RURAL
20101000	TEMPORARY FENCE	FOOT	90	90
20101200	TREE ROOT PRUNING	EACH	3	3
20101350	TREE PRUNING (OVER 10 INCH DIAMETER)	EACH	3	3
20200100	EARTH EXCAVATION	CU YD	181	181
21101615	TOPSOIL FURNISH AND PLACE, 4"	SQ YD	1,019	1,019
25000110	SEEDING, CLASS 1A	ACRE	0.25	0.25
25000400	NITROGEN FERTILIZER NUTRIENT	POUND	15	15
25000600	POTASSIUM FERTILIZER NUTRIENT	POUND	15	15
25100630	EROSION CONTROL BLANKET	SQ YD	1,019	1,019
28000305	TEMPORARY DITCH CHECKS	FOOT	50	50
28000400	PERIMETER EROSION BARRIER	FOOT	205	205
28000510	INLET FILTERS	EACH	5	5
31101200	SUBBASE GRANULAR MATERIAL, TYPE B 4"	SQ YD	743	743
42400200	PORTLAND CEMENT CONCRETE SIDEWALK 5 INCH	SQ FT	6,077	6,077

CODE NO.	ITEM	UNIT	TOTAL QUANTITY	CONSTR. CODE
				SRTS FUNDS 100% FED ROADWAY 0021 RURAL
42400800	DETECTABLE WARNINGS	SQ FT	60	60
44000200	DRIVEWAY PAVEMENT REMOVAL	SQ YD	236	236
44000500	COMBINATION CURB AND GUTTER REMOVAL	FOOT	84	84
44000600	SIDEWALK REMOVAL	SQ FT	283	283
542D0217	PIPE CULVERTS, CLASS D, TYPE 1 12"	FOOT	16	16
60603800	COMBINATION CONCRETE CURB AND GUTTER, TYPE B-6.12	FOOT	84	84
67100100	MOBILIZATION	L SUM	1	1
70102620	TRAFFIC CONTROL AND PROTECTION, STANDARD 701501	L SUM	1	1
70102640	TRAFFIC CONTROL AND PROTECTION, STANDARD 701801	L SUM	1	1
+ 72000100	SIGN PANEL - TYPE 1	SQ FT	22	22
+ 72800100	TELESCOPING STEEL SIGN SUPPORT	FOOT	32	32
+ 78000600	THERMOPLASTIC PAVEMENT MARKING - LINE 12"	FOOT	270	270
+ X0326899	SOLAR-POWERED FLASHING BEACON ASSEMBLY (COMPLETE)	EACH	2	2
* Z0004510	HOT-MIX ASPHALT DRIVEWAY PAVEMENT, 3"	SQ YD	69	69

+ SPECIALTY ITEM  
\* SPECIAL PROVISION

HRG PROJECT NO.: 19/040  
HRG PROJ. CONTACT:  
FILE NAME: 19/040-sht-sum.dgn  
PLOT DRIVER: L:\pdr\dwg.plt  
PEN TABLE: 170100a.tbl



USER NAME = bhartma	DESIGNED - BH	REVISED -
DRAWN - DMS	REVISED -	
CHECKED -	REVISED -	
DATE - 7/24/2020	REVISED -	

STATE OF ILLINOIS  
DEPARTMENT OF TRANSPORTATION

SUMMARY OF QUANTITIES			
CHAPEL HILL ROAD			
SCALE: N.T.S.	SHEET 1 OF 2 SHEETS	STA.	TO STA.

F.A.U. RTE. 0167	SECTION NO. 19-00014-00-SW	COUNTY MCHENRY	TOTAL SHEETS 18	SHEET NO. 3
FED. ROAD DIST. NO. ILLINOIS FED. AID PROJECT			CONTRACT NO. 61G72	

CODE NO.	ITEM	UNIT	TOTAL QUANTITY	CONSTR. CODE
				SRTS FUNDS 100% FED ROADWAY 0021 RURAL
Z0013798	CONSTRUCTION LAYOUT	L SUM	1	1
Z0017400	DRAINAGE & UTILITY STRUCTURES TO BE ADJUSTED	EACH	2	2
Z0030850	TEMPORARY INFORMATION SIGNING	SQ FT	52	52

+ SPECIALTY ITEM  
• SPECIAL PROVISION

HRG PROJECT NO.: 19040  
HRG PROJ. CONTACT:  
FILE NAME: 19040-srt-sum.dgn  
CLO: 11/19/19 11:20:11 AM  
PER: TABLE: 19040srt.tbl

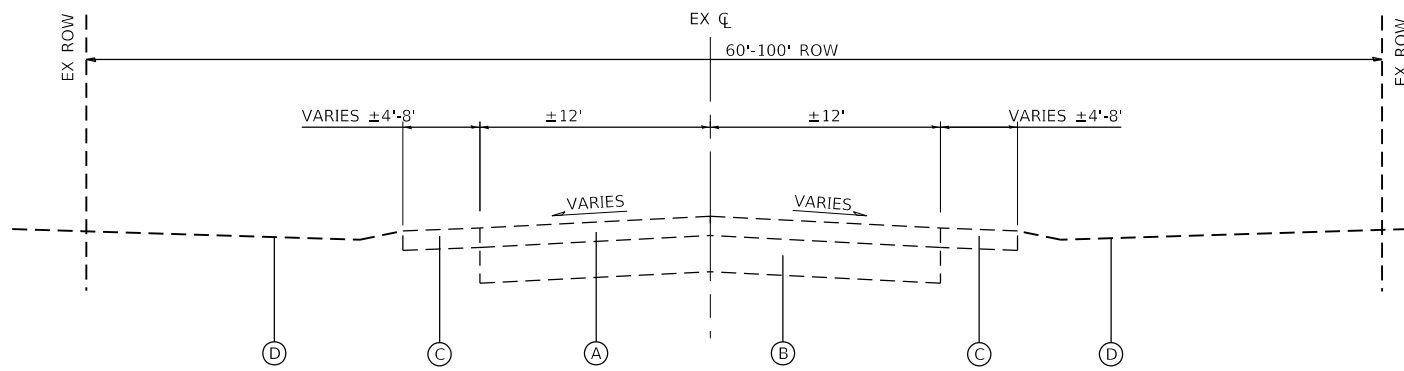


USER NAME = bhartma	DESIGNED - BH	REVISED -
	DRAWN - DMS	REVISED -
PLOT SCALE =	CHECKED -	REVISED -
PLOT DATE = 8/25/2020	DATE - 7/24/2020	REVISED -

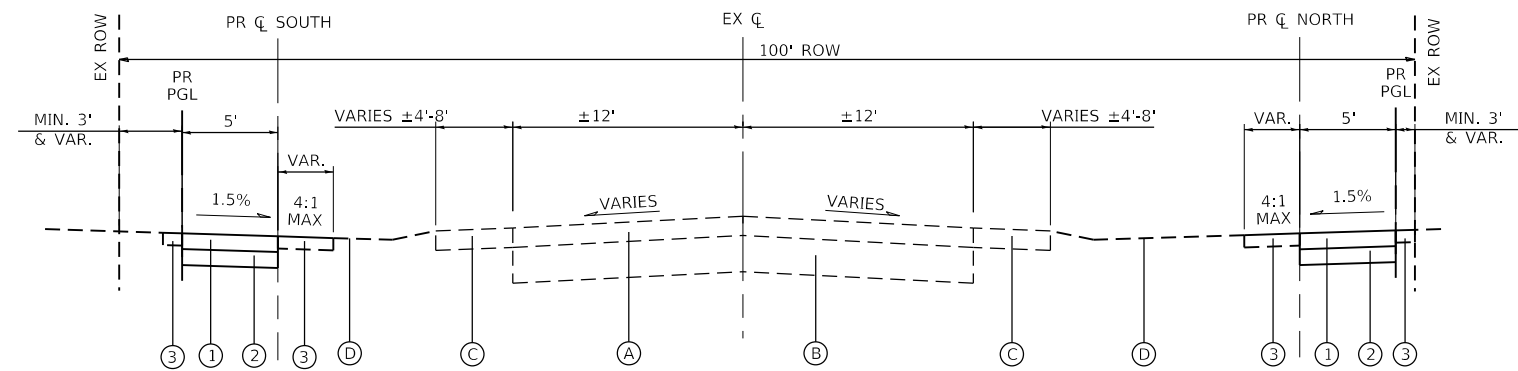
STATE OF ILLINOIS  
DEPARTMENT OF TRANSPORTATION

SUMMARY OF QUANTITIES  
CHAPEL HILL ROAD

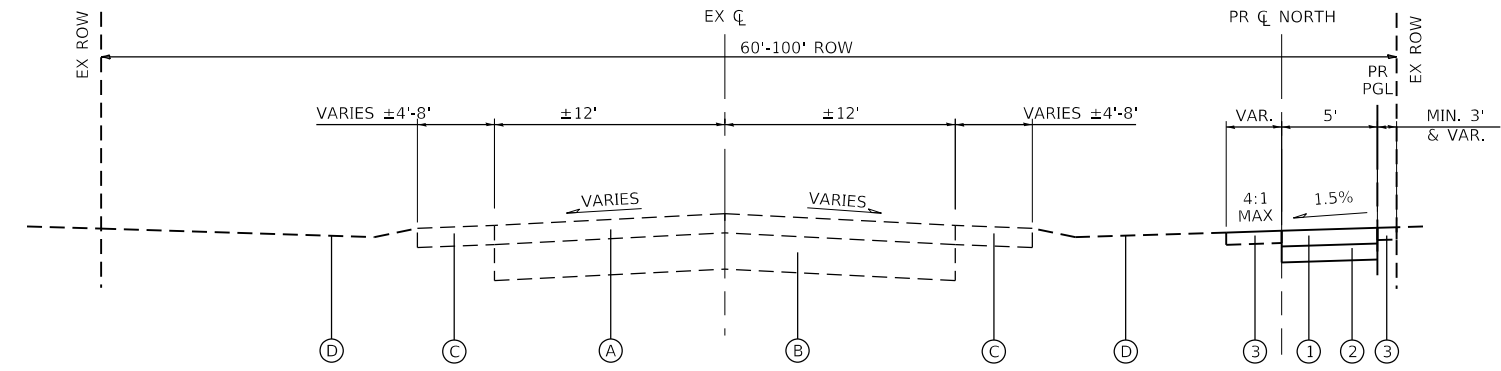
SCALE: N.T.S.	SHEET 2 OF 2 SHEETS	STA. TO STA.	F.A.U. RTE. 0167	SECTION NO. 19-00014-00-SW	COUNTY MCHENRY	TOTAL SHEETS 18	SHEET NO. 4
			FED. ROAD DIST. NO. ILLINOIS FED. AID PROJECT		CONTRACT NO. 61G72		



**EXISTING TYPICAL SECTION**  
 CHAPEL HILL ROAD  
 STA. 100+34 TO STA. 109+12 (NORTH)  
 STA. 200+10 TO STA. 204+31 (SOUTH)



**PROPOSED TYPICAL SECTION**  
 CHAPEL HILL ROAD  
 (FAIRVIEW AVE TO REED AVE)  
 STA. 100+34 TO STA. 103+69.55 (NORTH)  
 STA. 200+10 TO STA. 204+31 (SOUTH)



**PROPOSED TYPICAL SECTION**  
 CHAPEL HILL ROAD  
 (REED AVE TO NORTH LIMIT)  
 STA. 103+69.55 TO STA. 109+12 (NORTH)

HOT-MIX ASPHALT MIXTURE REQUIREMENTS	
MIXTURE TYPE	AIR VOIDS @ Ndes
HMA DRIVEWAY PAVEMENT, 3"	
HMA SURFACE COURSE, MIX "D", N50; (IL-9.5mm); 3" (IN 2 LIFTS)	4% @ 50 GYR.

**EXISTING LEGEND**

- (A) EXISTING HOT-MIX ASPHALT PAVEMENT; ±6"
- (B) EXISTING AGGREGATE BASE COURSE; ±12"
- (C) EXISTING AGGREGATE/EARTH SHOULDER
- (D) EXISTING GROUND

THE UNIT WEIGHT TO CALCULATE ALL HMA SURFACE MIXTURE QUANTITIES IS 112 LBS/SQ YD/IN

THE "AC TYPE" FOR POLYMERIZED HMA MIXES SHALL BE "SBS/SBR PG 76-22" AND FOR NON-POLYMERIZED HMA THE "AC TYPE" SHALL BE "PG 64-22" UNLESS MODIFIED BY DISTRICT ONE SPECIAL PROVISIONS.

FOR USE OF RECYCLED MATERIALS SEE SPECIAL PROVISIONS.

**PROPOSED LEGEND**

- (1) PORTLAND CEMENT CONCRETE SIDEWALK, 5"
- (2) SUB-BASE GRANULAR MATERIAL, TYPE B, 4"
- (3) TOPSOIL, FURNISH AND PLACE, 4" SEEDING, CLASS 1A

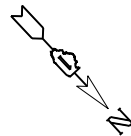
HRG PROJECT NO.: 191040  
 HRG PROJ. CONTACT:  
 FILE NAME: 191040-571-110.dgn  
 PEN TABLE: 191040.tbl

USER NAME = bhartma	DESIGNED - BH	REVISED -
PLOT SCALE =	DRAWN - DMS	REVISED -
PLOT DATE = 8/25/2020	CHECKED -	REVISED -
	DATE - 7/24/2020	REVISED -

**STATE OF ILLINOIS  
 DEPARTMENT OF TRANSPORTATION**

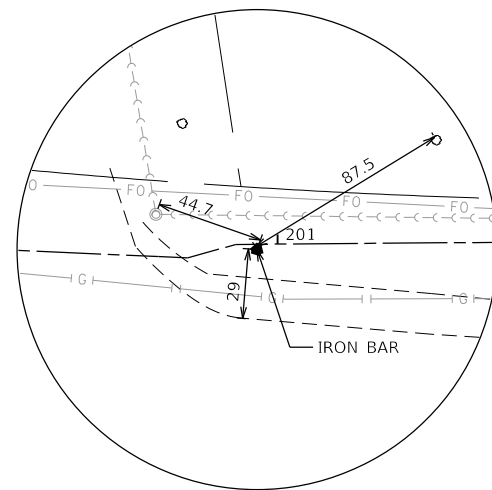
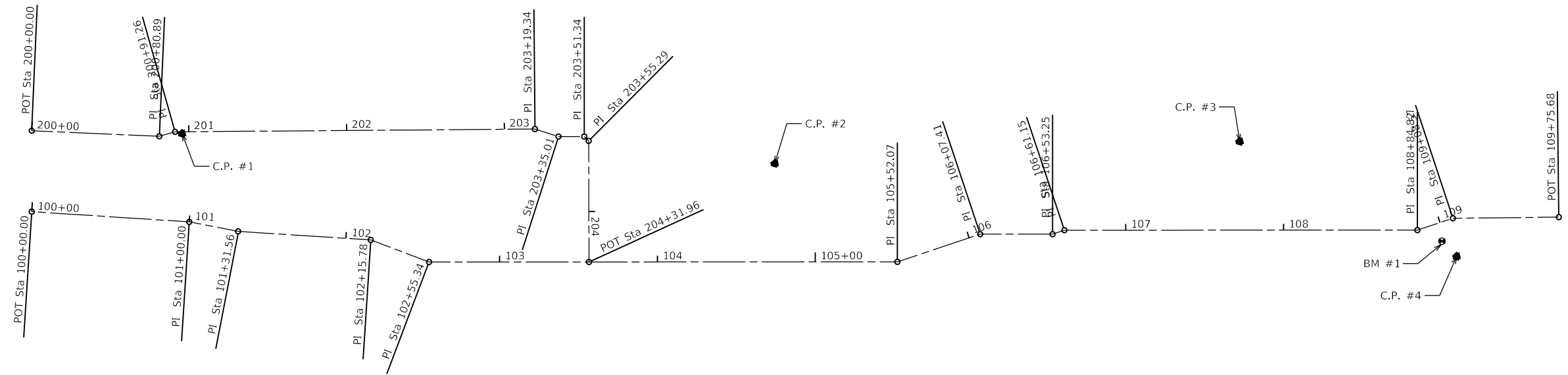
<b>TYPICAL SECTIONS    CHAPEL HILL ROAD</b>	
SCALE: N.T.S.	SHEET 1 OF 1 SHEETS
STA.	TO STA.

F.A.U. RTE.	SECTION NO.	COUNTY	TOTAL SHEETS	SHEET NO.
0167	19-00014-00-SW	MCHENRY	18	5
FED. ROAD DIST. NO.			ILLINOIS FED. AID PROJECT	
			CONTRACT NO. 61G72	

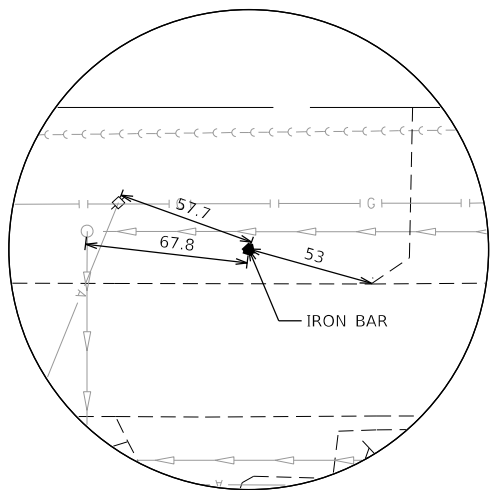


**BENCHMARKS**

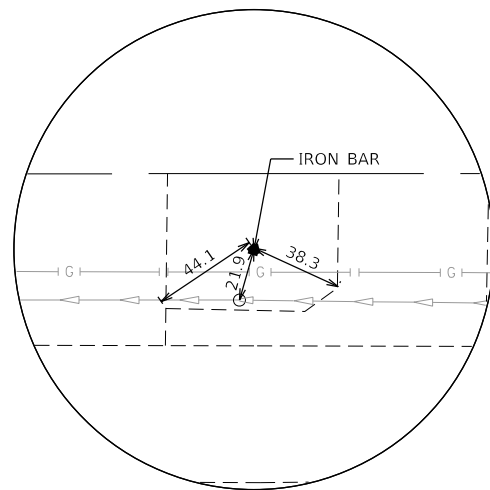
BENCHMARK 1: R/R SPIKE IN UTILITY POLE  
ACROSS FROM PUBLIC SAFETY BUILDING  
ELEV: 757.31



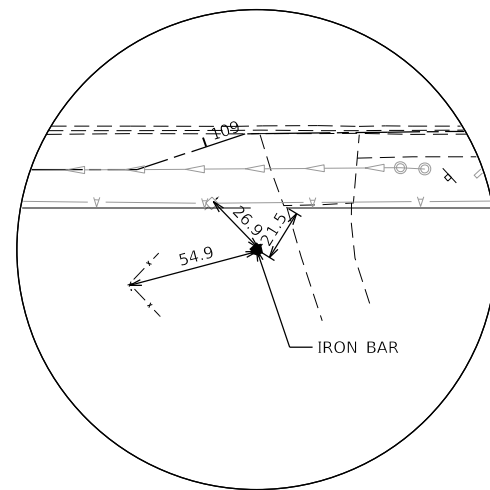
CONTROL POINT #1  
N: 2080215.158  
E: 1009900.160  
ELEV: 743.57  
STA. 200+95.72, 1.12' RT



CONTROL POINT #2  
N: 2080485.422  
E: 1009638.636  
ELEV: 745.73  
STA. 104+74.41, 62.36' LT



CONTROL POINT #3  
N: 2080676.403  
E: 1009413.860  
ELEV: 751.99  
STA. 107+72.29, 56.17' LT



CONTROL POINT #4  
N: 2080823.466  
E: 1009363.103  
ELEV: 757.49  
STA. 109+03.25, 23.67' RT

HRG PROJECT NO.: 191040  
 HRG PROJ. CONTACT:  
 FILE NAME: 191040-SHT-A-BD.dgn  
 PEN TABLE: 191040.tbl

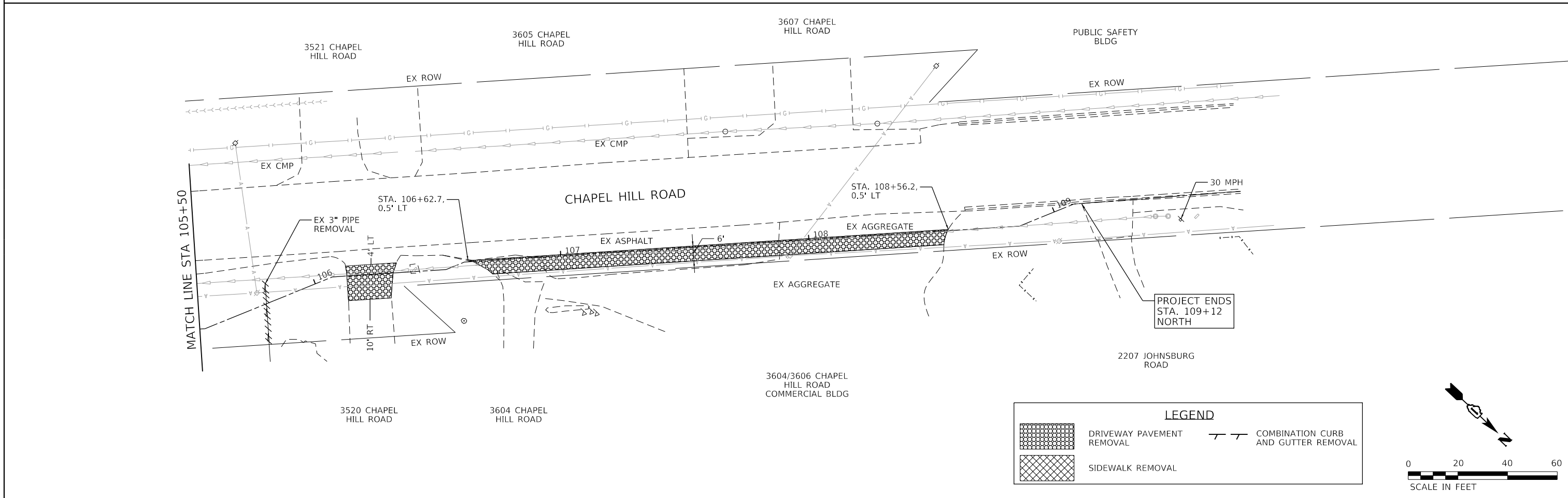
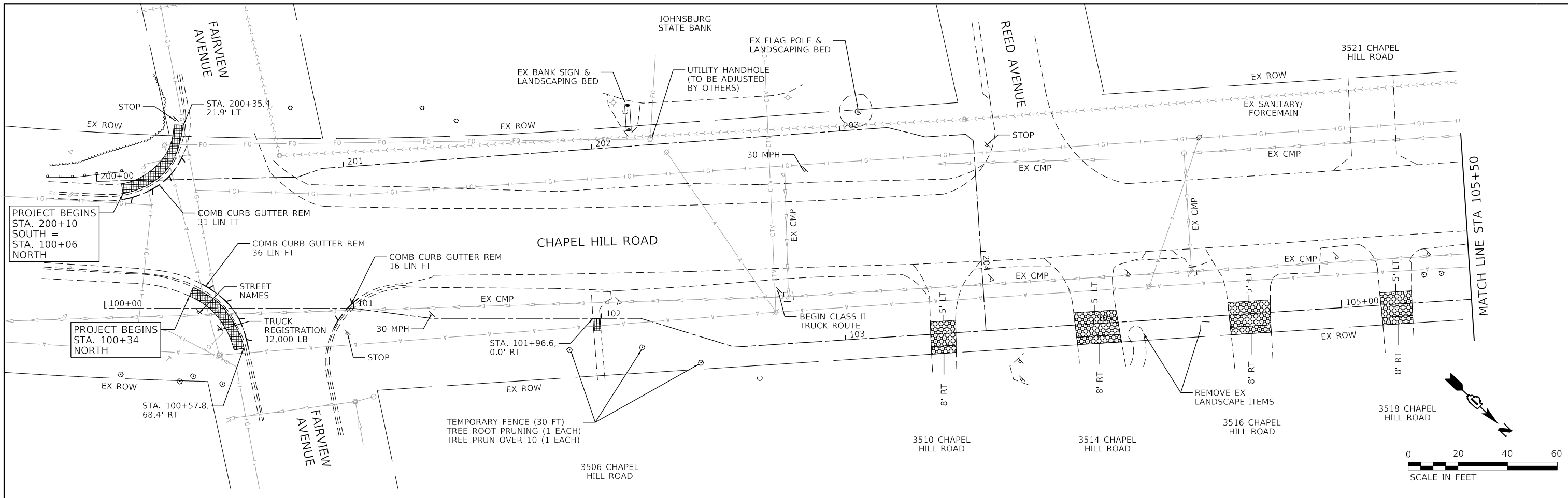
USER NAME = bhartma	DESIGNED - BH	REVISED - XX/XX/XXXX
	DRAWN - DMS	REVISED - XX/XX/XXXX
PLOT SCALE =	CHECKED -	REVISED - XX/XX/XXXX
PLOT DATE = 8/25/2020	DATE - 7/24/2020	REVISED - XX/XX/XXXX

**STATE OF ILLINOIS  
DEPARTMENT OF TRANSPORTATION**

**ALIGNMENT, TIES, AND BENCHMARKS  
CHAPEL HILL ROAD**

SCALE: 1"=40' SHEET 1 OF 1 SHEETS STA. TO STA.

F.A.U. RTE.	SECTION NO.	COUNTY	TOTAL SHEETS	SHEET NO.
0167	19-00014-00-SW	MCHENRY	18	6
FED. ROAD DIST. NO. ILLINOIS FED. AID PROJECT			CONTRACT NO. 61G72	



**LEGEND**

	DRIVEWAY PAVEMENT REMOVAL		COMBINATION CURB AND GUTTER REMOVAL
	SIDEWALK REMOVAL		



HRG PROJECT NO.: 191040  
 HRG PROJ. CONTACT:  
 FILE NAME: 191040-191-rem-01.dgn  
 PEN TABLE: 191040.tbl

HRGreen.com  
 Illinois Professional Design Firm  
 #184-001322

USER NAME = bharto	DESIGNED - BH	REVISED -
	DRAWN - DMS	REVISED -
PLOT SCALE =	CHECKED -	REVISED -
PLOT DATE = 8/25/2020	DATE - 7/24/2020	REVISED -

**STATE OF ILLINOIS**  
**DEPARTMENT OF TRANSPORTATION**

**REMOVAL PLAN**  
**CHAPEL HILL ROAD**  
 SCALE: 1"=20'    SHEET 1 OF 1 SHEETS    STA. TO STA.

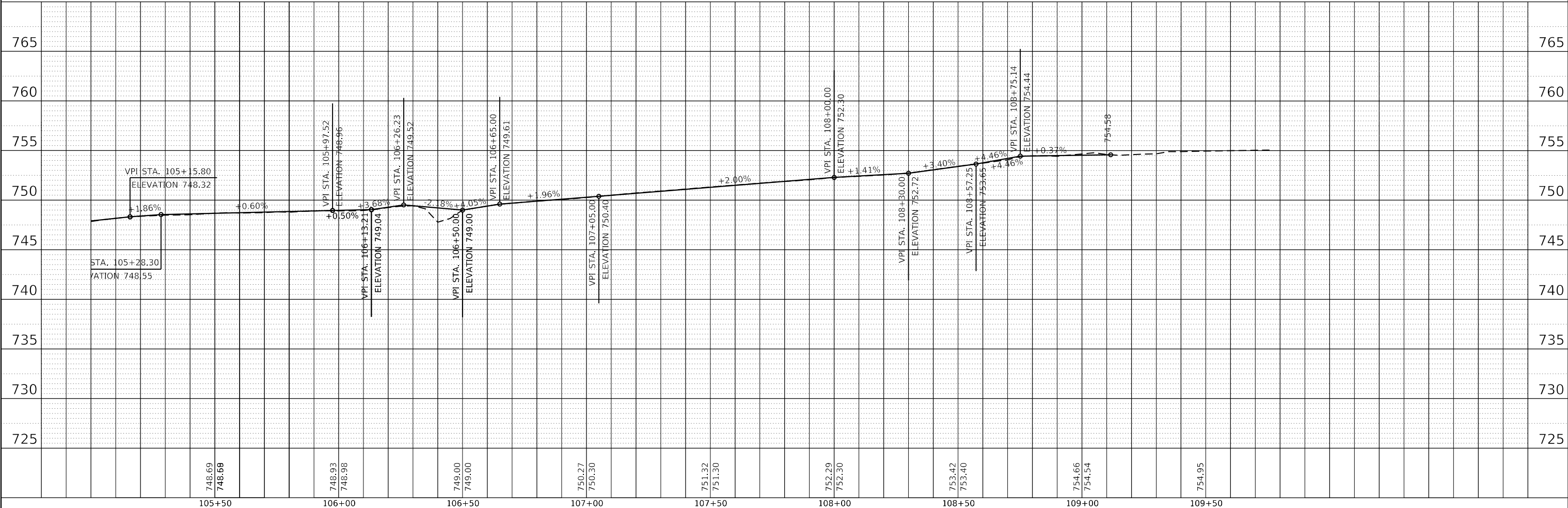
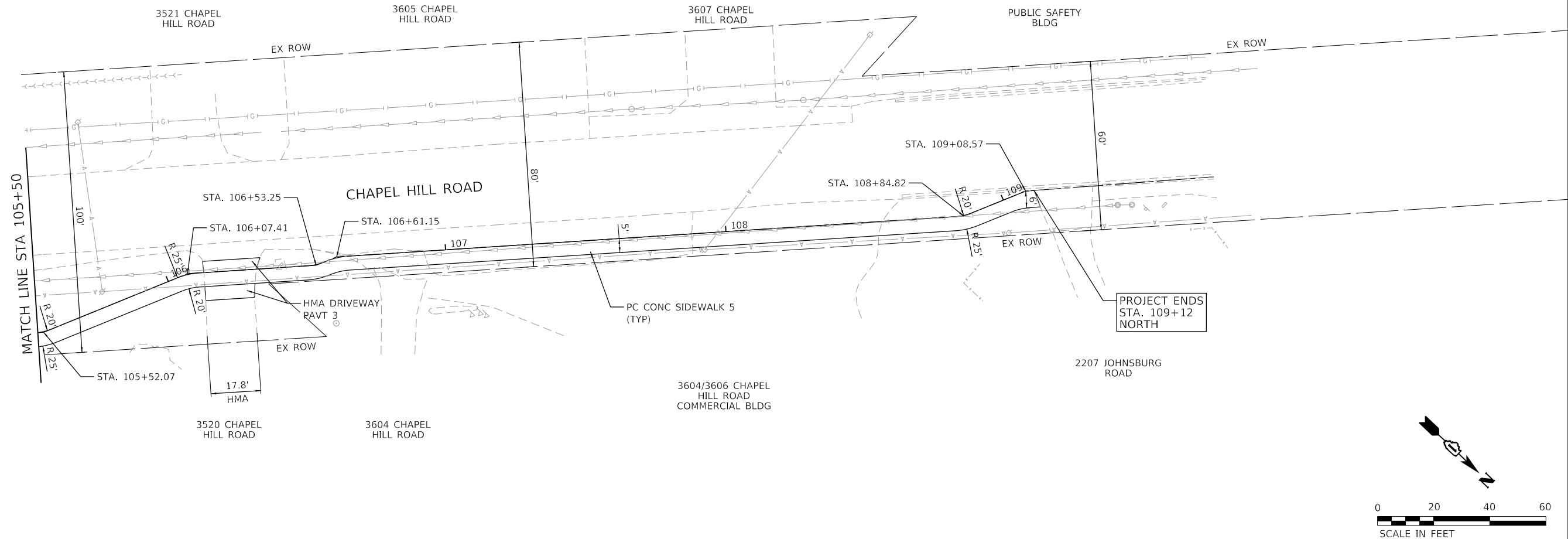
F.A.U. RTE.	SECTION NO.	COUNTY	TOTAL SHEETS	SHEET NO.
0167	19-00014-00-SW	MCHENRY	18	7
FED. ROAD DIST. NO.			ILLINOIS FED. AID PROJECT	
			CONTRACT NO. 61G72	





PLAN	SURVEYED	DATE
	PLOTTED	BY
	ALIGNED	
	CHECKED	
	FILE NAME	
	TABLE NAME	
	NO.	

PROFILE	SURVEYED	DATE
	PLOTTED	BY
	GRADES CHECKED	
	STRUCTURE NOTATIONS CHKD	
	NO.	



HRG PROJECT NO.: 191040  
 HRG PROJ. CONTACT:  
 FILE NAME: 191040-191-191040-191.dgn  
 PEN TABLE: 191040.tbl



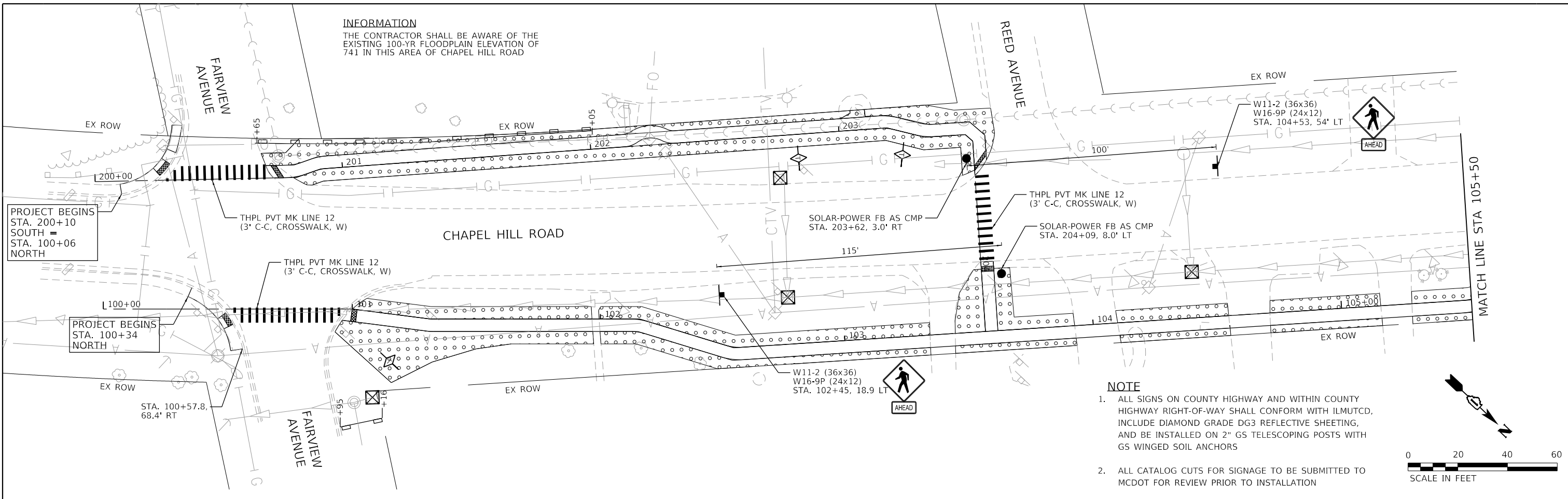
USER NAME = bhartna	DESIGNED - BH	REVISED -
	DRAWN - DMS	REVISED -
PLOT SCALE =	CHECKED -	REVISED -
PLOT DATE = 8/25/2020	DATE - 7/24/2020	REVISED -

**STATE OF ILLINOIS  
 DEPARTMENT OF TRANSPORTATION**

<b>ROADWAY &amp; DRAINAGE PLAN &amp; PROFILE</b>			
<b>CHAPEL HILL ROAD</b>			
SCALE: 1"=20'	SHEET 2	OF 2 SHEETS	STA. TO STA.

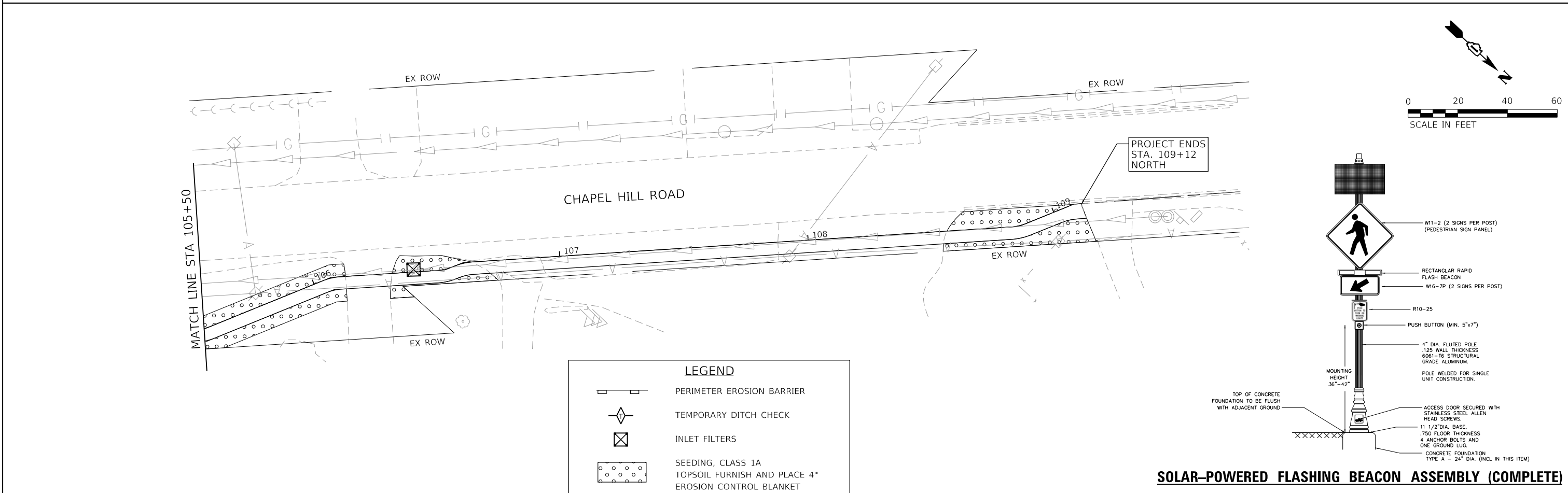
F.A.U. RTE.	SECTION NO.	COUNTY	TOTAL SHEETS	SHEET NO.
0167	19-00014-00-SW	MCHENRY	18	9
FED. ROAD DIST. NO.			ILLINOIS FED. AID PROJECT	
			CONTRACT NO. 61G72	

**INFORMATION**  
 THE CONTRACTOR SHALL BE AWARE OF THE EXISTING 100-YR FLOODPLAIN ELEVATION OF 741 IN THIS AREA OF CHAPEL HILL ROAD



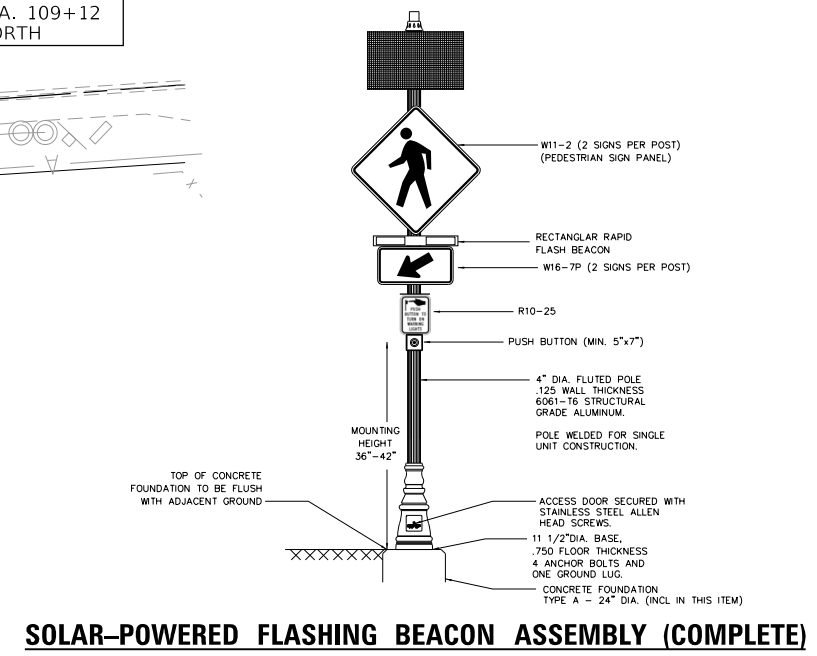
**NOTE**

1. ALL SIGNS ON COUNTY HIGHWAY AND WITHIN COUNTY HIGHWAY RIGHT-OF-WAY SHALL CONFORM WITH ILMUTCD, INCLUDE DIAMOND GRADE DG3 REFLECTIVE SHEETING, AND BE INSTALLED ON 2" GS TELESCOPING POSTS WITH GS WINGED SOIL ANCHORS
2. ALL CATALOG CUTS FOR SIGNAGE TO BE SUBMITTED TO MCDOT FOR REVIEW PRIOR TO INSTALLATION



**LEGEND**

	PERIMETER EROSION BARRIER
	TEMPORARY DITCH CHECK
	INLET FILTERS
	SEEDING, CLASS 1A TOPSOIL FURNISH AND PLACE 4" EROSION CONTROL BLANKET



**SOLAR-POWERED FLASHING BEACON ASSEMBLY (COMPLETE)**

HRG PROJECT NO.: 191040  
 HRG PROJ. CONTACT:  
 FILE NAME: 191040-1917-hssep-01.dgn  
 PEN TABLE: 1917.tbl

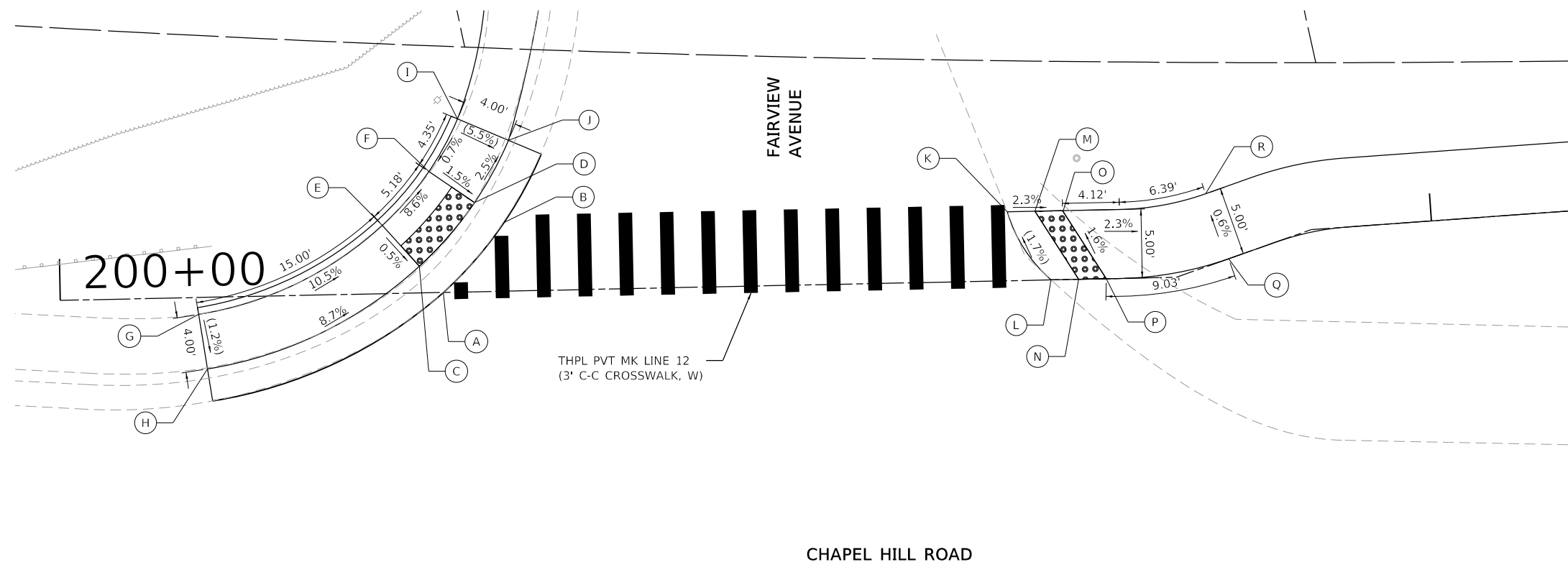


USER NAME = bharma	DESIGNED - BH	REVISED -
PLOT SCALE =	DRAWN - DMS	REVISED -
PLOT DATE = 8/25/2020	CHECKED -	REVISED -
	DATE - 7/24/2020	REVISED -

**STATE OF ILLINOIS  
 DEPARTMENT OF TRANSPORTATION**

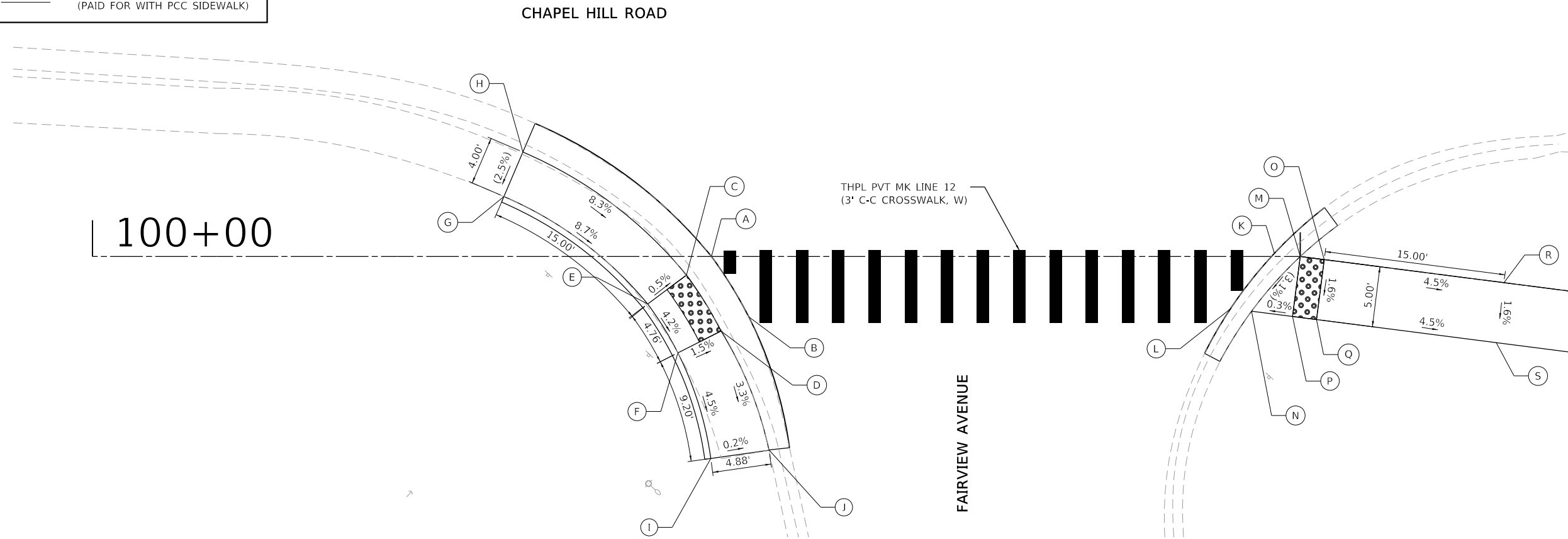
<b>EROSION AND SEDIMENT CONTROL DETAILS</b>	
<b>CHAPEL HILL ROAD</b>	
SCALE: 1"=20'	SHEET 1 OF 1 SHEETS
STA.	TO STA.

F.A.U. RTE.	SECTION NO.	COUNTY	TOTAL SHEETS	SHEET NO.
0167	19-00014-00-SW	MCHENRY	18	10
FED. ROAD DIST. NO.		ILLINOIS FED. AID PROJECT		
		CONTRACT NO. 61G72		



	STATION	OFFSET	ELEVATION
A	200+27.77	0.00	(745.45)
B	200+32.23	-5.00	(744.96)
C	200+26.07	-1.94	745.45
D	200+30.16	-6.47	744.96
E	200+23.44	-4.95	745.47
F	200+26.90	-8.78	745.02
G	200+10.00	1.23	(747.04)
H	200+10.56	5.19	(746.95)
I	200+29.05	-12.56	(745.05)
J	200+32.71	-10.93	(744.83)
K	200+68.75	-5.00	(744.02)
L	200+71.82	0.00	(744.12)
M	200+70.75	-5.00	743.98
N	200+73.82	0.00	744.08
O	200+72.75	-5.00	743.93
P	200+75.82	0.00	744.03
Q	200+84.91	0.00	743.82
R	200+84.91	-5.00	743.79

LEGEND	
( )	EXISTING ELEVATION/SLOPE
•••••	DETECTABLE WARNINGS
—	PROPOSED SIDE CURB (PAID FOR WITH PCC SIDEWALK)



	STATION	OFFSET	ELEVATION
A	100+51.25	0.00	(744.78)
B	100+54.34	5.00	(744.53)
C	100+49.18	1.54	744.78
D	100+52.03	6.17	744.53
E	100+45.97	3.93	744.80
F	100+48.46	7.97	744.60
G	100+34.06	-4.97	(746.10)
H	100+35.64	-8.65	(746.20)
I	100+51.19	16.72	744.19
J	100+56.02	16.02	744.18
K	100+97.59	0.00	(743.78)
L	100+93.79	5.00	(743.59)
M	101+00.00	0.00	743.78
N	100+95.97	4.52	743.59
O	101+02.00	0.00	743.69
P	100+99.36	4.96	743.60
Q	101+02.00	5.00	743.61
R	101+17.00	0.00	743.02
S	101+17.00	5.00	742.94

HRG PROJECT NO.: 191040  
 HRG PROJ. CONTACT:  
 FILE NAME: 191040-SW-ramp-01.dgn  
 PEN TABLE: 191040.tbl

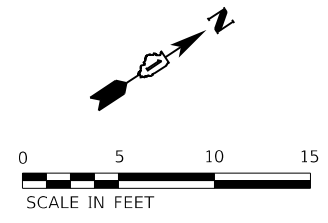


USER NAME = bhartma	DESIGNED - BH	REVISED -
PLOT SCALE =	DRAWN - DMS	REVISED -
PLOT DATE = 8/25/2020	CHECKED -	REVISED -
	DATE - 7/24/2020	REVISED -

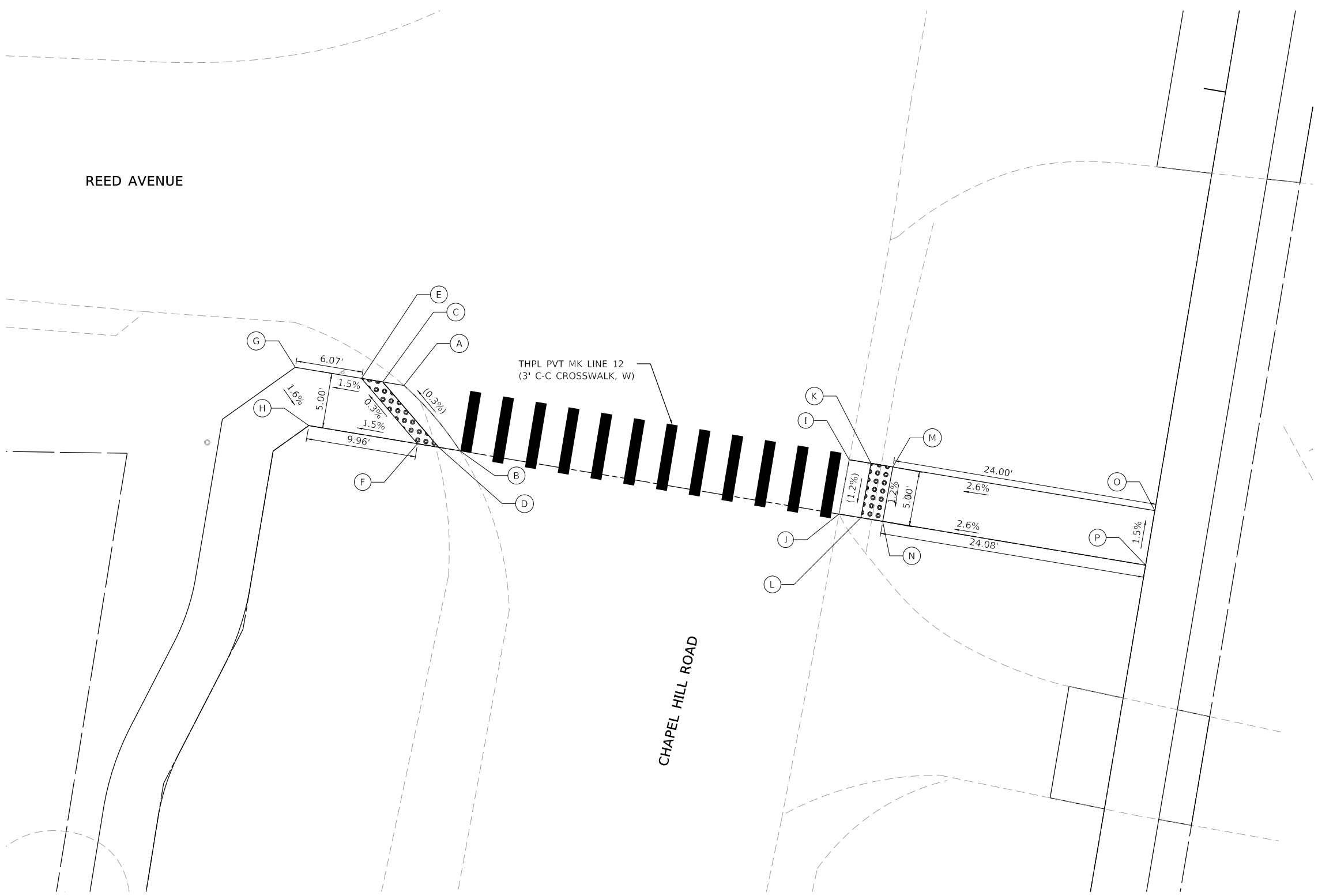
**STATE OF ILLINOIS**  
**DEPARTMENT OF TRANSPORTATION**

SIDEWALK RAMP DETAILS			
CHAPEL HILL ROAD			
SCALE: 1"=5'	SHEET 1	OF 2 SHEETS	STA. TO STA.

F.A.U. RTE.	SECTION NO.	COUNTY	TOTAL SHEETS	SHEET NO.
0167	19-00014-00-SW	MCHENRY	18	11
FED. ROAD DIST. NO. ILLINOIS FED. AID PROJECT			CONTRACT NO. 61G72	



	STATION	OFFSET	ELEVATION
A	203+68.37	-5.00	(743.34)
B	203+74.33	0.00	(743.36)
C	203+61.24	-5.00	743.31
D	203+67.20	-0.00	743.33
E	203+59.29	-5.00	743.28
F	203+65.25	-0.00	743.30
G	203+55.29	-5.41	743.19
H	203+55.29	-0.00	743.15
I	204+09.16	-5.00	(744.28)
J	204+09.06	-0.00	(744.22)
K	204+05.97	-5.00	744.33
L	204+05.87	-0.00	744.27
M	204+07.97	-5.00	744.38
N	204+07.87	-0.00	744.32
O	204+31.96	-5.00	745.06
P	204+31.96	0.00	744.98



LEGEND	
( )	EXISTING ELEVATION/SLOPE
	DETECTABLE WARNINGS
	PROPOSED SIDE CURB (PAID FOR WITH PCC SIDEWALK)

HRG PROJECT NO.: 191040  
 HRG PROJ. CONTACT:  
 FILE NAME: 191040-SW-ramp-02.dgn  
 PEN TABLE: 191040.tbl

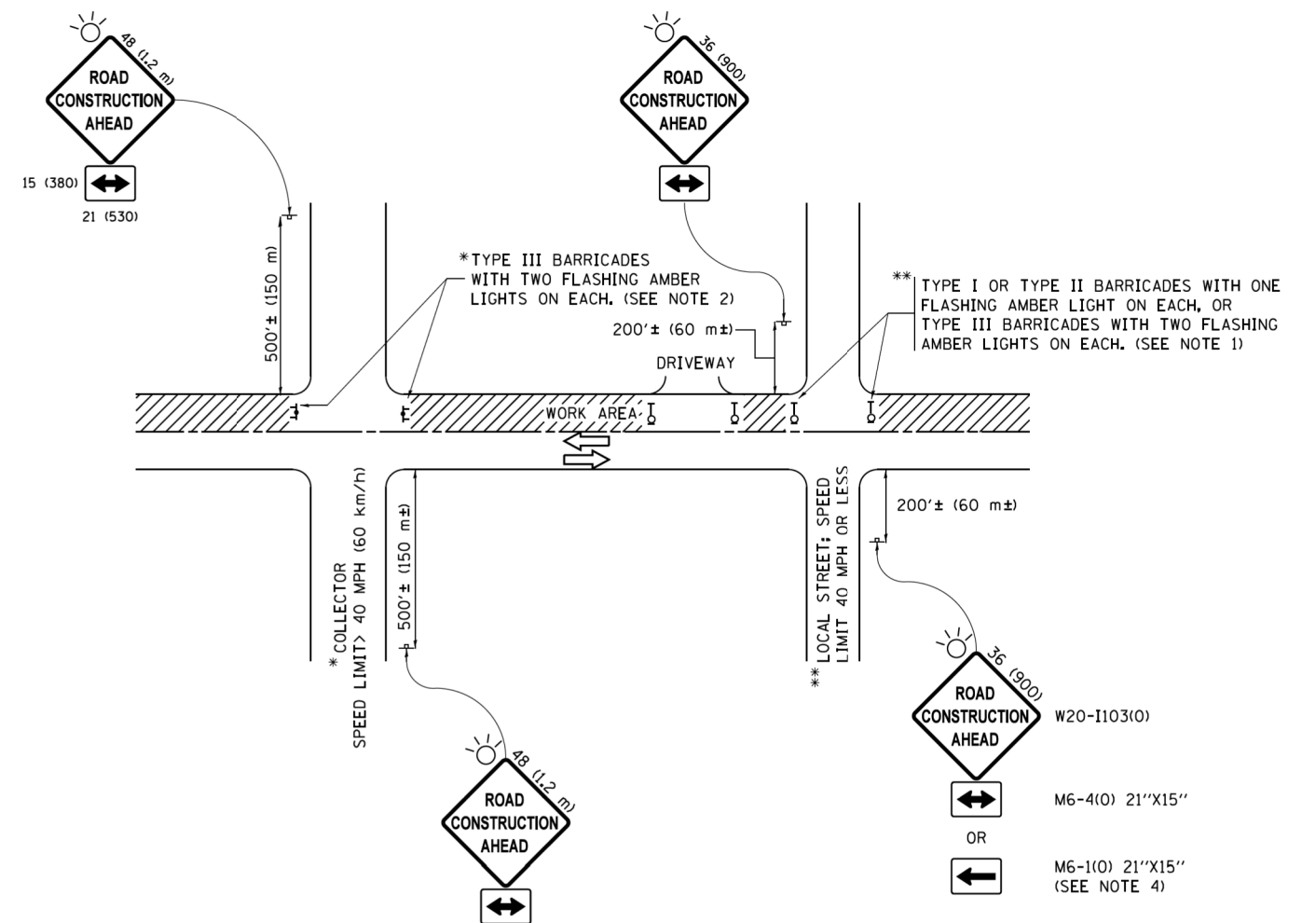


USER NAME = bhartna	DESIGNED - BH	REVISED -
	DRAWN - DMS	REVISED -
PLOT SCALE =	CHECKED -	REVISED -
PLOT DATE = 8/25/2020	DATE - 7/24/2020	REVISED -

**STATE OF ILLINOIS**  
**DEPARTMENT OF TRANSPORTATION**

SIDEWALK RAMP DETAILS	
CHAPEL HILL ROAD	
SCALE: 1"=5'	SHEET 2 OF 2 SHEETS STA. TO STA.

F.A.U. RTE.	SECTION NO.	COUNTY	TOTAL SHEETS	SHEET NO.
0167	19-00014-00-SW	MCHENRY	18	12
FED. ROAD DIST. NO. ILLINOIS FED. AID PROJECT			CONTRACT NO. 61G72	



**NOTES:**

1. SIDE ROAD WITH A SPEED LIMIT OF 40 MPH (60 km/h) OR LESS AS SHOWN ON THE DRAWING AND AS DIRECTED BY THE ENGINEER:
  - a) ONE "ROAD CONSTRUCTION AHEAD" SIGN 36 x 36 (900x900) WITH A FLASHER MOUNTED ON IT APPROXIMATELY 200' (60 m) IN ADVANCE OF THE MAIN ROUTE.
  - b) THE CLOSED PORTION OF THE MAIN ROUTE SHALL BE PROTECTED BY BLOCKING WITH TYPE I, TYPE II OR TYPE III BARRICADES, 1/3 OF THE CROSS SECTION OF THE CLOSED PORTION.
2. SIDE ROAD WITH A SPEED LIMIT GREATER THAN 40 MPH (60 km/h) AS SHOWN ON THE DRAWING AND AS DIRECTED BY THE ENGINEER:
  - a) ONE "ROAD CONSTRUCTION AHEAD" SIGN 48 x 48 (1.2 m x 1.2 m) WITH A FLASHER MOUNTED ON IT APPROXIMATELY 500' (150 m) IN ADVANCE OF THE MAIN ROUTE.
  - b) THE CLOSED PORTION OF THE MAIN ROUTE SHALL BE PROTECTED BY BLOCKING WITH TYPE III BARRICADES, 1/2 OF THE CROSS SECTION OF THE CLOSED PORTION.
3. CONES MAY BE SUBSTITUTED FOR BARRICADES OR DRUMS AT HALF THE SPACING DURING DAY OPERATIONS. CONES SHALL BE A MINIMUM OF 28 (710) IN HEIGHT.
4. WHEN THE SIDE ROAD LIES BETWEEN THE BEGINNING OF THE MAINLINE SIGNING AND THE WORK ZONE, A SINGLE HEADED ARROW (M6-1) SHALL BE USED IN LIEU OF THE DOUBLE HEADED ARROW (M6-4).
5. WHEN WORK IS BEING PERFORMED ON A SIDE ROAD OR DRIVEWAY, FOLLOW THE APPLICABLE STANDARD(S). THE DIRECTIONAL ARROW (M6-1 OR M6-4) SHALL BE COVERED OR REMOVED WHEN NO LONGER CONSISTENT WITH THE TRAFFIC CONTROL SET-UP.
6. ADVANCE WARNING SIGNS ARE TO BE OMITTED ON DRIVEWAYS UNLESS OTHERWISE SPECIFIED IN THE PLANS OR BY THE ENGINEER.
7. THE TRAFFIC CONTROL AND PROTECTION FOR SIDE ROADS, INTERSECTIONS, AND DRIVEWAYS SHALL BE INCLUDED IN THE COST OF SPECIFIED TRAFFIC CONTROL STANDARDS OR ITEMS.

All dimensions are in inches (millimeters) unless otherwise shown.

FILE NAME =	USER NAME = footemj	DESIGNED - L.H.A.	REVISED - A. HOUSEH 10-15-96
pw1\1L084E8ID\INTEG\illinois.gov\FWIDOT\Documents\IDOT Offices\District 1\Projects\Dist1\1000\1000\CADD\cadd\CADsheets\tc10.dgn		DRAWN	REVISED - T. RAMMACHER 01-06-00
Default	PLOT SCALE = 50,000' / 1" =	CHECKED -	REVISED - A. SCHUETZE 07-01-13
	PLOT DATE = 9/15/2016	DATE - 06-89	REVISED - A. SCHUETZE 09-15-16

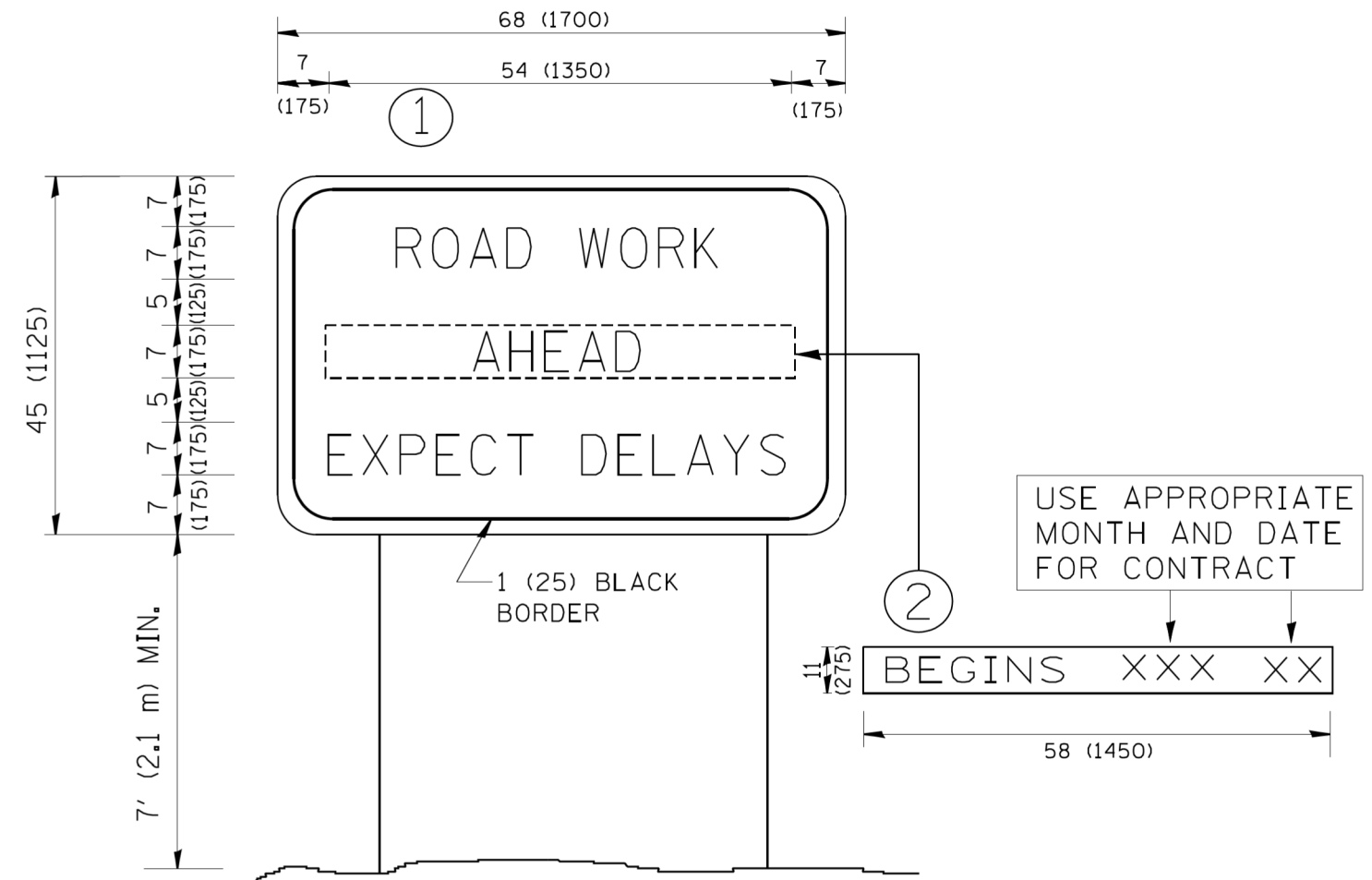
**STATE OF ILLINOIS  
DEPARTMENT OF TRANSPORTATION**

**TRAFFIC CONTROL AND PROTECTION FOR  
SIDE ROADS, INTERSECTIONS, AND DRIVEWAYS**

SCALE: NONE SHEET 1 OF 1 SHEETS STA. TO STA.

F.A. RTE.	SECTION	COUNTY	TOTAL SHEETS	SHEET NO.
0167	19-00014-00-SW	MCHENRY	18	13
<b>TC-10</b>		CONTRACT NO.	61G72	
ILLINOIS FED. AID PROJECT				





**NOTES:**

1. USE BLACK LETTERING ON ORANGE BACKGROUND.
2. ERECT SIGNS IN ADVANCE OF THE LOCATION FOR THE "ROAD CONSTRUCTION AHEAD" SIGN AT LOCATIONS AS DIRECTED BY THE ENGINEER.
3. ERECT SIGN ① WITH INSTALLED PANEL ② ONE WEEK PRIOR TO THE START OF CONSTRUCTION.
4. REMOVE PANEL ② SOON AFTER THE START OF CONSTRUCTION.
5. SEE SPECIAL PROVISION FOR "TEMPORARY INFORMATION SIGNING" FOR ADDITIONAL INFORMATION.
6. ONE SIGN ASSEMBLY EQUALS 25.70 SQ. FT. (2.3 SQ. M.)
7. SHALL BE PAID FOR AS TEMPORARY INFORMATION SIGNING.

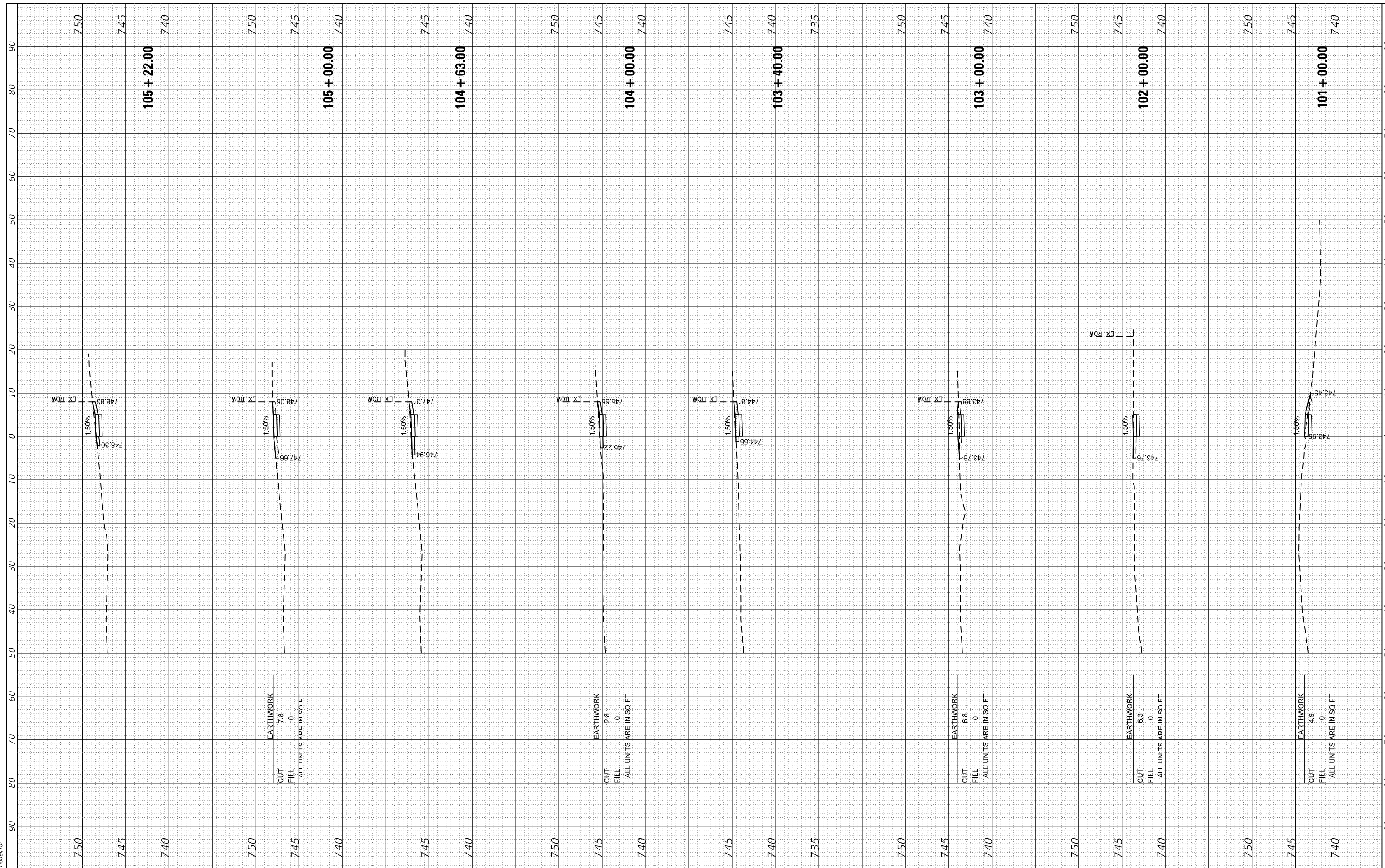
ALL DIMENSIONS ARE IN INCHES (MILLIMETERS) UNLESS OTHERWISE SHOWN.

FILE NAME = W:\diststd\22x34\tc22.dgn	USER NAME = gegl1enobt	DESIGNED - DRAWN -	REVISED - R. MIRS 09-15-97 REVISED - R. MIRS 12-11-97	<b>STATE OF ILLINOIS DEPARTMENT OF TRANSPORTATION</b>	<b>ARTERIAL ROAD INFORMATION SIGN</b>		F.A. RTE. 0167	SECTION 19-00014-00-SW	COUNTY MCHENRY	TOTAL SHEETS 18	SHEET NO. 15	
	PLOT SCALE = 50.000 ' / IN.	CHECKED -	REVISED - T. RAMMACHER 02-02-99		SCALE: NONE	SHEET NO. 1 OF 1 SHEETS	STA.	TO STA.	<b>TC-22</b>		CONTRACT NO. 61G72	
	PLOT DATE = 1/4/2008	DATE -	REVISED - C. JUCIUS 01-31-07		FED. ROAD DIST. NO. 1 ILLINOIS FED. AID PROJECT							

FINAL SURVEY NO.	SURVEYED	BY	DATE
NOTE BOOK NO.	PLOTTED		
AREAS CHECKED	TEMPLATE		
	AREAS		
	CHECKED		

ORIGINAL SURVEY NO.	SURVEYED	BY	DATE
NOTE BOOK NO.	PLOTTED		
AREAS CHECKED	TEMPLATE		
	AREAS		
	CHECKED		

HRG PROJECT No: 19040  
 FILE NAME: 19040 - XS - 19040.dgn  
 PLOT DRIVER: plottcrtc6g  
 PEN TABLE: plottbltbl1



HRGreen.com  
 Illinois Professional Design Firm  
 #184-001322

USER NAME	= bhar-tno
DESIGNED	- BH
DRAWN	- DMS
CHECKED	-
DATE	- 7/24/2020

REVISED	-
REVISED	-
REVISED	-
REVISED	-

**STATE OF ILLINOIS  
 DEPARTMENT OF TRANSPORTATION**

**CROSS SECTIONS  
 CHAPEL HILL ROAD**

SCALE: 10H:5V    SHEET 1 OF 2 SHEETS    STA. 101+00.00 TO STA. 105+22.00

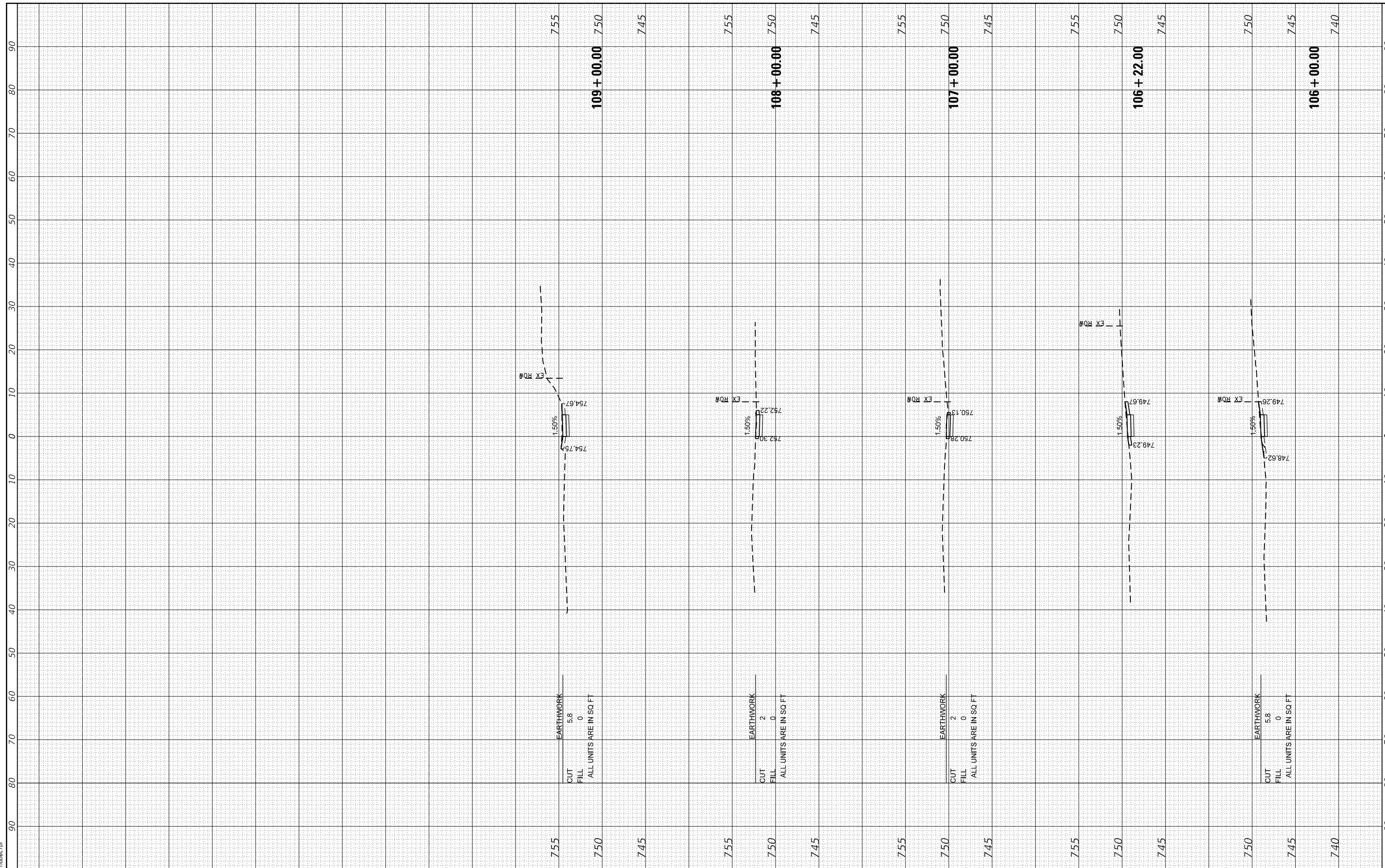
F.A.U. RTE.	SECTION NO.	COUNTY	TOTAL SHEETS	SHEET NO.
0167	19-00014-00-SW	MCHENRY	18	16
FED. ROAD DIST. NO. ILLINOIS FED. AID PROJECT			CONTRACT NO. 61G72	



FINAL SURVEY NO.	SURVEYED	BY	DATE
NOTE BOOK NO.	PLOTTED		
AREAS CHECKED	TEMPLATE		
	AREAS		
	CHECKED		

ORIGINAL SURVEY NO.	SURVEYED	BY	DATE
NOTE BOOK NO.	PLOTTED		
AREAS CHECKED	TEMPLATE		
	AREAS		
	CHECKED		

HRG PROJECT No: 19040  
 FILE NAME: 19040 - XS - 0617.rvt.dgn  
 PLOT DRIVER: J:\Prof\dwgplotcsg  
 PEN TABLE: plotlabel.tbl



HRGreen.com  
 Illinois Professional Design Firm  
 #184-001322

USER NAME	= bhartha
DESIGNED	- BH
DRAWN	- DMS
CHECKED	-
DATE	- 7/24/2020
PLOT SCALE	-
PLOT DATE	- 8/25/2020

DESIGNED	- BH	REVISED	-
DRAWN	- DMS	REVISED	-
CHECKED	-	REVISED	-
DATE	- 7/24/2020	REVISED	-

**STATE OF ILLINOIS  
 DEPARTMENT OF TRANSPORTATION**

**CROSS SECTIONS  
 CHAPEL HILL ROAD**

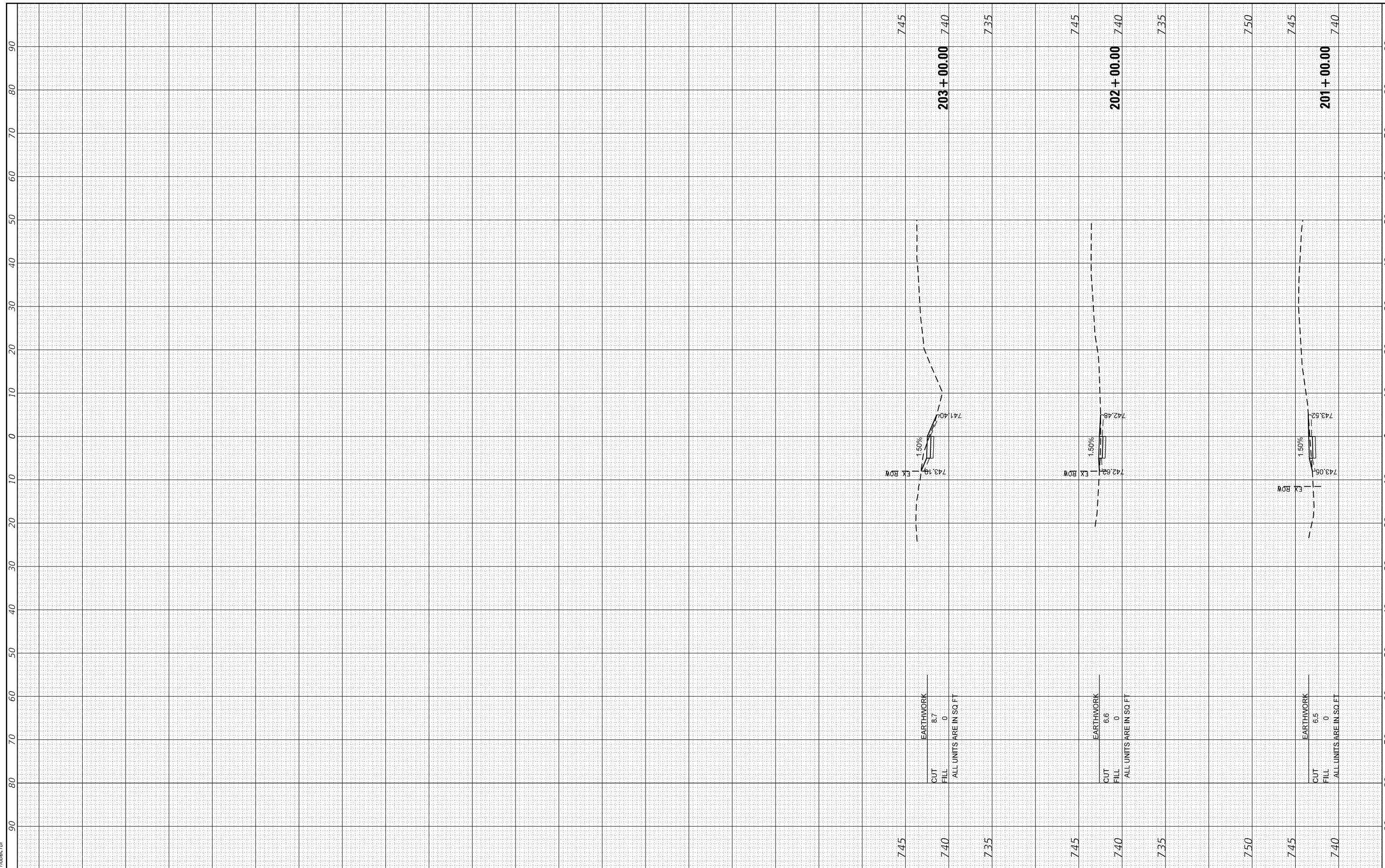
SCALE: 10H:5V    SHEET 2 OF 2 SHEETS    STA. 106+00.00 TO STA. 109+00.00

F.A.U. RTÉ.	SECTION NO.	COUNTY	TOTAL SHEETS	SHEET NO.
0167	19-00014-00-SW	MCHENRY	18	17
FED. ROAD DIST. NO. ILLINOIS FED. AID PROJECT			CONTRACT NO. 61G72	

FINAL SURVEY NO.	SURVEYED	BY	DATE
NOTE BOOK NO.	PLOTTED		
	TEMPLATE		
	AREAS		
	CHECKED		

ORIGINAL SURVEY NO.	SURVEYED	BY	DATE
NOTE BOOK NO.	PLOTTED		
	TEMPLATE		
	AREAS		
	CHECKED		

HRG PROJECT NO: 19040  
 FILE NAME: 19040-19-00014-00-SW.dgn  
 PLOT DRIVER: il\_caf\_dwtcfcg  
 PEN TABLE: plotlabel.tbl



USER NAME = bhartha	DESIGNED - BH	REVISED -
	DRAWN - DMS	REVISED -
PLOT SCALE =	CHECKED -	REVISED -
PLOT DATE = 8/25/2020	DATE - 7/24/2020	REVISED -

**STATE OF ILLINOIS  
 DEPARTMENT OF TRANSPORTATION**

<b>CROSS SECTIONS    CHAPEL HILL ROAD</b>	
SCALE: 10H:5V	SHEET 1 OF 1 SHEETS STA. 201+00.00 TO STA. 203+00.00

F.A.U. RTÉ.	SECTION NO.	COUNTY	TOTAL SHEETS	SHEET NO.
0167	19-00014-00-SW	MCHENRY	18	18
FED. ROAD DIST. NO.	ILLINOIS FED. AID PROJECT	CONTRACT NO. 61G72		