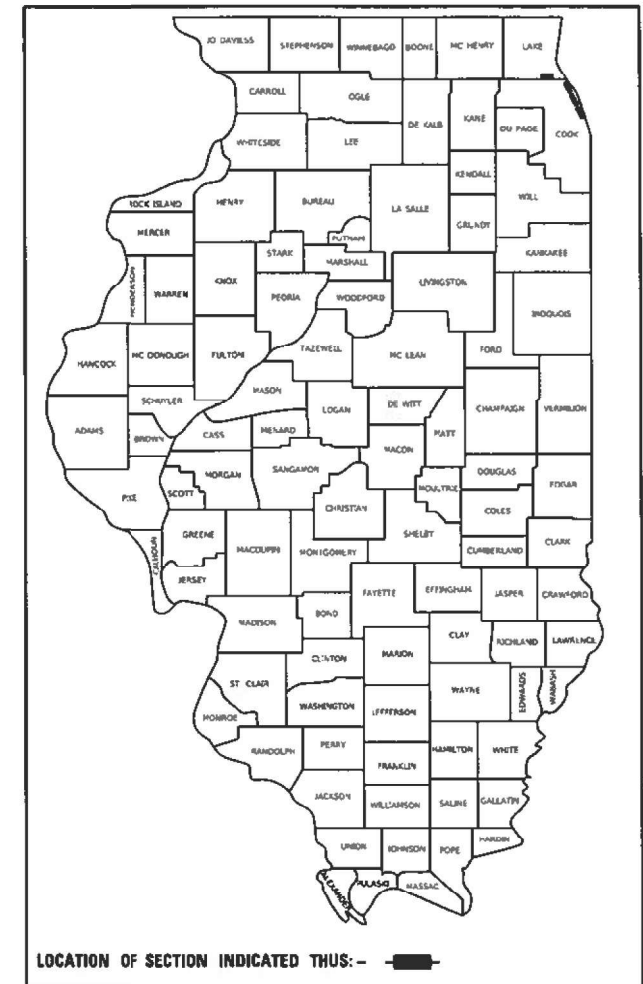


STATE OF ILLINOIS
DEPARTMENT OF TRANSPORTATION

SECTION	COUNTY	TOTAL SHEETS	SHEET NO.
2020-228-BP	COOK	25	1
ILLINOIS		CONTRACT NO. 62M88	

* 25 + 2 = 27 TOTAL SHEETS

D-91-015-21



FOR INDEX OF SHEETS, SEE SHEET NO. 2

**PROPOSED
HIGHWAY PLANS**

- 1) FAU ROUTE 3726: LAKE-COOK ROAD OVER RAVINE
 - 2) FAU ROUTE 3509: SHERIDAN ROAD OVER RAVINES AT VARIOUS LOCATIONS
- SECTION: 2020-228-BP
BRIDGE PAINTING
COOK COUNTY

TRAFFIC DATA

LAKE-COOK ROAD
2018 ADT = 3,350
SPEED LIMIT = 30 MPH

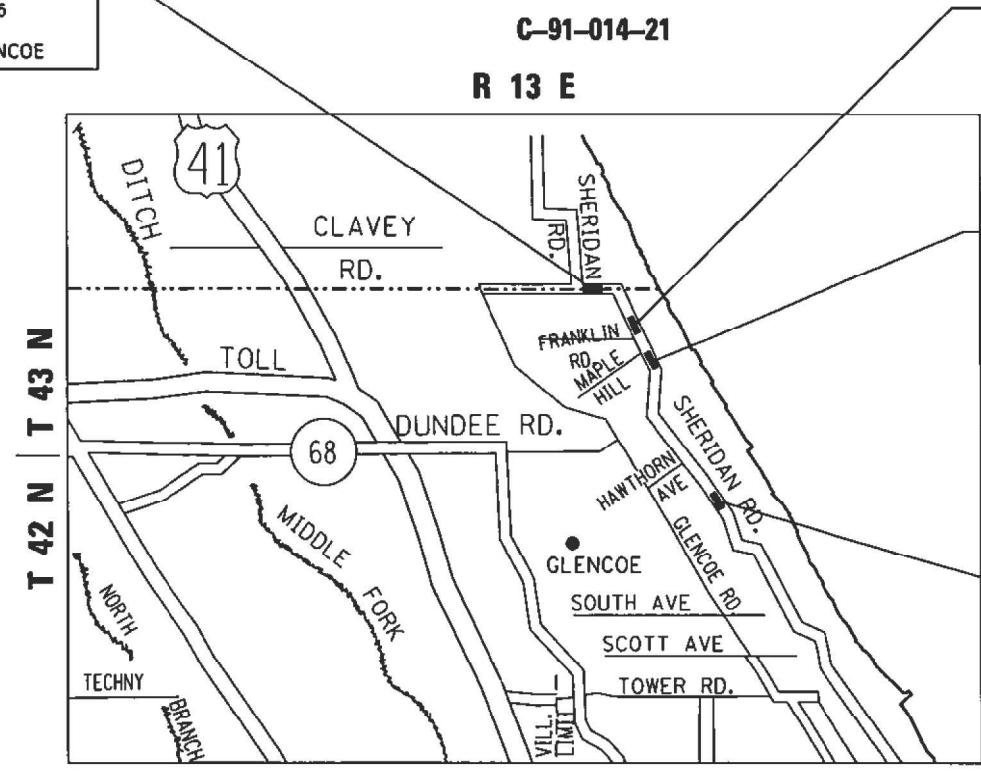
SHERIDAN ROAD
2018 ADT = 2,850
SPEED LIMIT = 30 MPH

IMPROVEMENT LOCATION 1:
LAKE-COOK ROAD OVER RAVINE
SN: 016-0616
VILLAGE OF GLENCOE

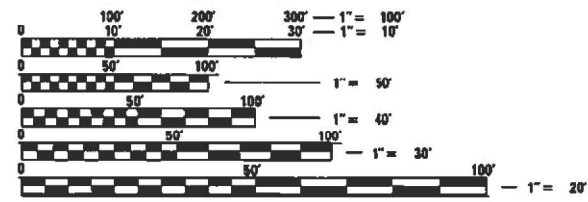
IMPROVEMENT LOCATION 2:
SHERIDAN RD OVER RAVINE #1
SN: 016-0617
VILLAGE OF GLENCOE

IMPROVEMENT LOCATION 3:
SHERIDAN RD OVER RAVINE #2
SN: 016-0618
VILLAGE OF GLENCOE

IMPROVEMENT LOCATION 4:
SHERIDAN RD OVER RAVINE #3
SN: 016-0619
VILLAGE OF GLENCOE



MORaine & NEW TRIER TOWNSHIPS



FULL SIZE PLANS HAVE BEEN PREPARED USING STANDARD ENGINEERING SCALES. REDUCED SIZED PLANS WILL NOT CONFORM TO STANDARD SCALES. IN MAKING MEASUREMENTS ON REDUCED PLANS, THE ABOVE SCALES MAY BE USED.

J.U.L.I.E.
JOINT UTILITY LOCATION INFORMATION FOR EXCAVATORS
1-800-892-0123
OR 811

PROJECT MANAGER: J. ALAIN MIDY (847) 221-3056

CONTRACT NO. 62M88

STATE OF ILLINOIS
DEPARTMENT OF TRANSPORTATION

SUBMITTED August 24, 2020
Anthony J. Quigley REGIONAL ENGINEER
October 2, 2020
Eric A. Elk
ENGINEER OF DESIGN AND ENVIRONMENT
October 2, 2020
James J. Gu
DIRECTOR OF HIGHWAYS PROJECT IMPLEMENTATION

PRINTED BY THE AUTHORITY
OF THE STATE OF ILLINOIS

INDEX OF SHEETS

1	TITLE SHEET
2	INDEX OF SHEETS, STATE STANDARDS AND GENERAL NOTES
3	SUMMARY OF QUANTITIES
4-8	EXISTING BRIDGE PLANS (SN 016-0616)
* 9-13	EXISTING BRIDGE PLANS (SN 016-0617)
14-18	EXISTING BRIDGE PLANS (SN 016-0618)
** 19-22	EXISTING BRIDGE PLANS (SN 016-0619)
23	TRAFFIC CONTROL AND PROTECTION FOR SIDE ROADS, INTERSECTIONS, AND DRIVEWAYS (TC-10)
24	TRAFFIC CONTROL AND PROTECTION AT TURN BAYS (TO REMAIN) OPEN TO TRAFFIC (TC-14)
25	ARTERIAL ROAD INFORMATION SIGN (TC-22)

* 011A - SHEET ADDED

** 021A - SHEET ADDED

GENERAL PAINT NOTES

CLEANING AND PAINTING OF THE EXISTING STRUCTURAL STEEL SHALL BE AS SPECIFIED IN THE SPECIAL PROVISION FOR "CLEANING AND PAINTING EXISTING STEEL STRUCTURES".

ALL ITEMS (SUCH AS, BUT NOT LIMITED TO: CONDUITS, BRACKETS AND DECK DRAINS) ATTACHED TO OUTSIDE OF THE FASCIA BEAMS SHOULD BE CLEANED AND PAINTED.

SN-016-0616

ALL BEAMS, BEARINGS AND OTHER STRUCTURAL STEEL WITHIN FIVE (5) FT. (MEASURED ALONG THE BEAM) OF EITHER SIDE OF ALL DECK JOINTS, SHALL BE CLEANED PER NEAR WHITE BLAST CLEANING SSPC-SP10. THE EXTERIOR SURFACES AND TOP AND BOTTOM OF THE BOTTOM FLANGE OF THE FASCIA BEAMS (SEE FIGURE 1). SHALL BE CLEANED PER NEAR WHITE BLAST CLEANING SSPC-SP10.

SN-016-0617, SN-016-0618 AND SN-016-0619

ALL BEAMS, BEARINGS AND OTHER STRUCTURAL STEEL WITHIN FIVE (5) FT. (MEASURED ALONG THE BEAM) OF EITHER SIDE OF ALL DECK JOINTS, SHALL BE CLEANED PER NEAR WHITE BLAST CLEANING SSPC-SP10. THE EXTERIOR AND INTERIOR FACE OF THE WEB, TOP AND BOTTOM OF THE BOTTOM FLANGE, AS WELL AS BOTTOM OF THE TOP FLANGE SHALL BE CLEANED PER WHITE BLAST CLEANING SSPC-SP10 (SEE FIGURE 2)

THESE AREAS SHALL BE PAINTED ACCORDING TO THE REQUIREMENTS OF PAINT SYSTEM 1 -OZ/E/U. THE COLOR OF THE FINAL FINISH COAT FOR ALL INTERIOR STEEL SURFACES SHALL BE GRAY, MUNSELL NO 5B 7/1. THE COLOR OF THE FINAL FINISH COAT FOR THE EXTERIOR AND BOTTOM FLANGE OF THE FASCIA BEAMS SHALL BE REDDISH BROWN, MUNSELL NO 2. 5YR 3/4.

STATE STANDARDS

STANDARD NO.	DESCRIPTION
701001-02	OFF-RD OPERATIONS, 2L, 2W, MORE THAN 15' (4.5 m) AWAY
701006-05	OFF-RD OPERATIONS, 2L, 2W, 15' (4.5 m) TO 24" (600 mm) FROM PAVEMENT EDGE
701011-04	OFF-RD MOVING OPERATIONS, 2L, 2W, DAY ONLY
701301-04	LANE CLOSURE, 2L, 2W, SHORT TIME OPERATIONS
701311-03	LANE CLOSURE 2L, 2W MOVING OPERATIONS, DAY ONLY
701501-06	URBAN LANE CLOSURE, 2L, 2W, UNDIVIDED
701801-06	SIDEWALK, CORNER OR CROSSWALK CLOSURE
701901-08	TRAFFIC CONTROL DEVICES

GENERAL NOTES

BEFORE STARTING ANY EXCAVATION, THE CONTRACTOR SHALL CALL "J.U.L.I.E." AT (800) 892-0123 OR 811 FOR FIELD LOCATIONS OF BURIED ELECTRIC, TELEPHONE AND GAS UTILITIES. 48 HOUR NOTIFICATION IS REQUIRED.

THE CONTRACTOR SHALL COORDINATE CONSTRUCTION ACTIVITIES WITH UTILITY COMPANIES AND THE VILLAGE OF GLENCOE.

PLAN DIMENSIONS AND DETAILS RELATIVE TO EXISTING PLANS ARE SUBJECT TO NOMINAL CONSTRUCTION VARIATIONS. THE CONTRACTOR SHALL FIELD VERIFY EXISTING DIMENSIONS AND DETAILS AFFECTING NEW CONSTRUCTION AND MAKE NECESSARY APPROVED ADJUSTMENTS PRIOR TO CONSTRUCTION OR ORDERING OF MATERIALS. SUCH VARIATIONS SHALL NOT BE CAUSE FOR ADDITIONAL COMPENSATION FOR A CHANGE IN SCOPE OF THE WORK, HOWEVER, THE CONTRACTOR WILL BE PAID FOR THE QUANTITY ACTUALLY FURNISHED BASED AT THE UNIT PRICE BID FOR THE WORK.

THE CONTRACTOR WILL NOT BE ALLOWED TO SET UP A YARD OR FIELD OFFICE ON STATE PROPERTY WITHOUT WRITTEN PERMISSION FROM THE DEPARTMENT.

THE CONTRACTOR SHALL CONTACT THE DISTRICT ONE TRAFFIC CONTROL SUPERVISOR AT KALPANA.KANNAN-HOSADURGA@ILLINOIS.GOV FOR ARTERIALS A MINIMUM OF 72 HOURS IN ADVANCE OF BEGINNING WORK.

THESE PLANS HAVE BEEN PREPARED FROM NOTES RECEIVED FROM THE BUREAU OF MAINTENANCE BRIDGE INSPECTORS.

IT SHALL BE THE CONTRACTOR'S RESPONSIBILITY TO PROTECT AND MAINTAIN THE EXISTING BRIDGE LIGHTING AT ANY LOCATIONS THAT LIGHTING IS ENCOUNTERED ADJACENT TO AN AREA TO BE CLEANED AND PAINTED.

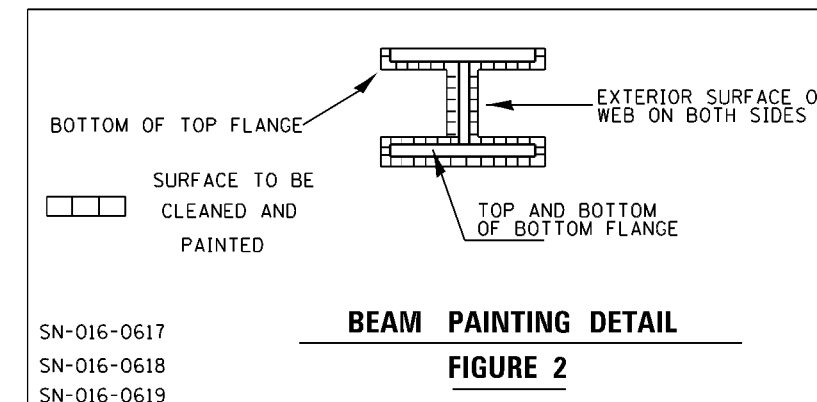
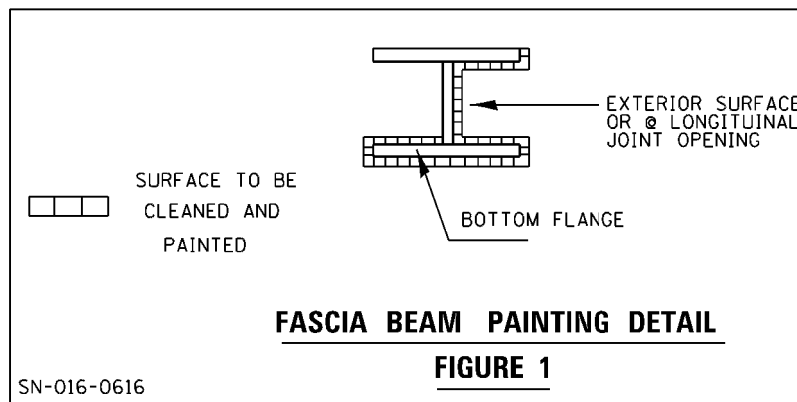
THE CONTRACTOR SHALL BE REQUIRED TO PROVIDE ACCESS TO ABUTTING PROPERTY AT ALL TIMES DURING THE CONSTRUCTION OF THIS PROJECT.

WHEN ARTIFICIAL LIGHTING IS UTILIZED IN NIGHTTIME OPERATIONS, THE CONTRACTOR SHALL EXERCISE THE OUTMOST PRECAUTIONS PREVENTING ADVERSE VISIBILITY TO THE MOTORING PUBLIC AND ADJACENT RESIDENTIAL AREAS.

THE CONTRACTOR SHALL TAKE NECESSARY PRECAUTIONS WHEN WORKING NEAR THE ABUTMENTS DUE TO ELECTRICAL JUNCTIONS BOXES AND ATTACHED CONDUITS.

DO NOT SCALE PLANS FOR CONSTRUCTION DIMENSIONS.

TC-22 TO BE USE ONLY FOR ARTERIAL.



STATE OF ILLINOIS
DEPARTMENT OF TRANSPORTATION

INDEX OF SHEETS, STATE STANDARDS
GENERAL NOTES AND GENERAL PAINT NOTES

F.A.U. RTE.	SECTION	COUNTY	TOTAL SHEETS	SHEET NO.
3726 3509	2020-228-BP	COOK	25	2
			CONTRACT NO. 62M88	

SCALE: SHEET OF SHEETS STA. TO STA.

ILLINOIS FED. AID PROJECT

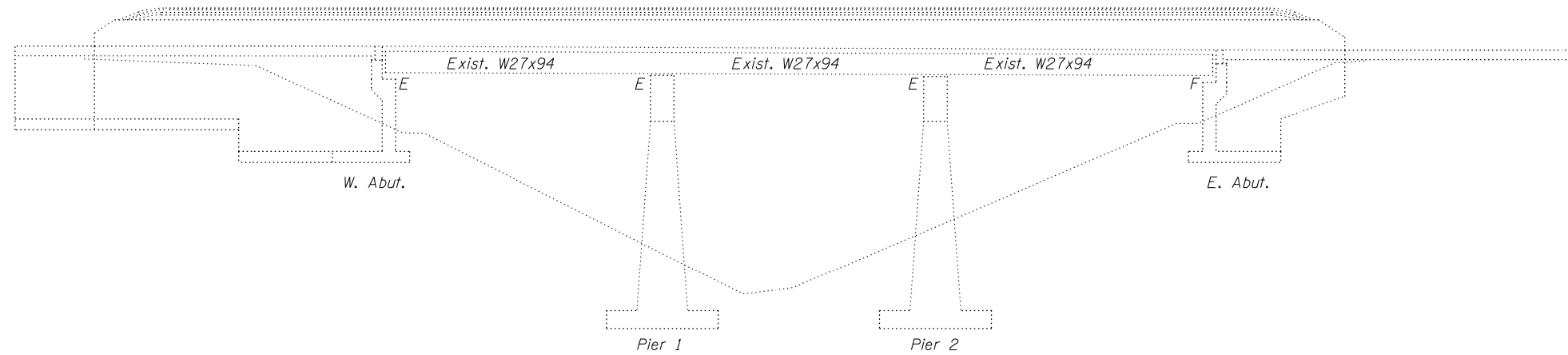
REV-SEP

SUMMARY OF QUANTITIES			URBAN TOTAL QUANTITIES	CONSTRUCTION TYPE CODE				SUMMARY OF QUANTITIES			TOTAL QUANTITIES	CONSTRUCTION TYPE CODE			
CODE NO	ITEM	UNIT		100% STATE 0047 BRIDGE 1 SN 016-0616	100% STATE 0047 BRIDGE 2 SN 016-0617	100% STATE 0047 BRIDGE 3 SN 016-0618	100% STATE 0047 BRIDGE 4 SN 016-0619	CODE NO	ITEM	UNIT		100% STATE 0047 BRIDGE 1 SN 016-0616	100% STATE 0047 BRIDGE 2 SN 016-0617	100% STATE 0047 BRIDGE 3 SN 016-0618	100% STATE 0047 BRIDGE 4 SN 016-0619
67000400	ENGINEER'S FIELD OFFICE, TYPE A	CAL MO	8	2	2	2	2								
67100100	MOBILIZATION	L SUM	1	0.25	0.25	0.25	0.25								
70102620	TRAFFIC CONTROL AND PROTECTION, STANDARD 701501	L SUM	1	0.25	0.25	0.25	0.25								
70102640	TRAFFIC CONTROL AND PROTECTION, STANDARD 701801	L SUM	1	0.25	0.25	0.25	0.25								
Z0007114	CONTAINMENT AND DISPOSAL OF NON-LEAD PAINT CLEANING RESIDUES	L SUM	1		0.33	0.33	0.34								
Z0010501	CLEANING AND PAINTING STEEL BRIDGE NO. 1	L SUM	1	1											
Z0010502	CLEANING AND PAINTING STEEL BRIDGE NO. 2	L SUM	1		1										
Z0010503	CLEANING AND PAINTING STEEL BRIDGE NO. 3	L SUM	1			1									
Z0010504	CLEANING AND PAINTING STEEL BRIDGE NO. 4	L SUM	1				1								
Z0030850	TEMPORARY INFORMATION SIGNING	SO FT	51.4	12.85	12.85	12.85	12.85								
20007101	CONTAINMENT AND DISPOSAL OF LEAD PAINT CLEANING RESIDUES NO. 1	L SUM	1	1											
X5050502	CONTAINMENT AND DISPOSAL OF NON-LEAD PAINT CLEANING RESIDUES NO. 2	L SUM	1		1										
X5060603	CONTAINMENT AND DISPOSAL OF NON-LEAD PAINT CLEANING RESIDUES NO. 3	L SUM	1			1									
X5060604	CONTAINMENT AND DISPOSAL OF NON-LEAD PAINT CLEANING RESIDUES NO. 4	L SUM	1												
Z0076604	TRAINEES - TRAINING PROGRAM GRADUATE	HOURS								500	500				

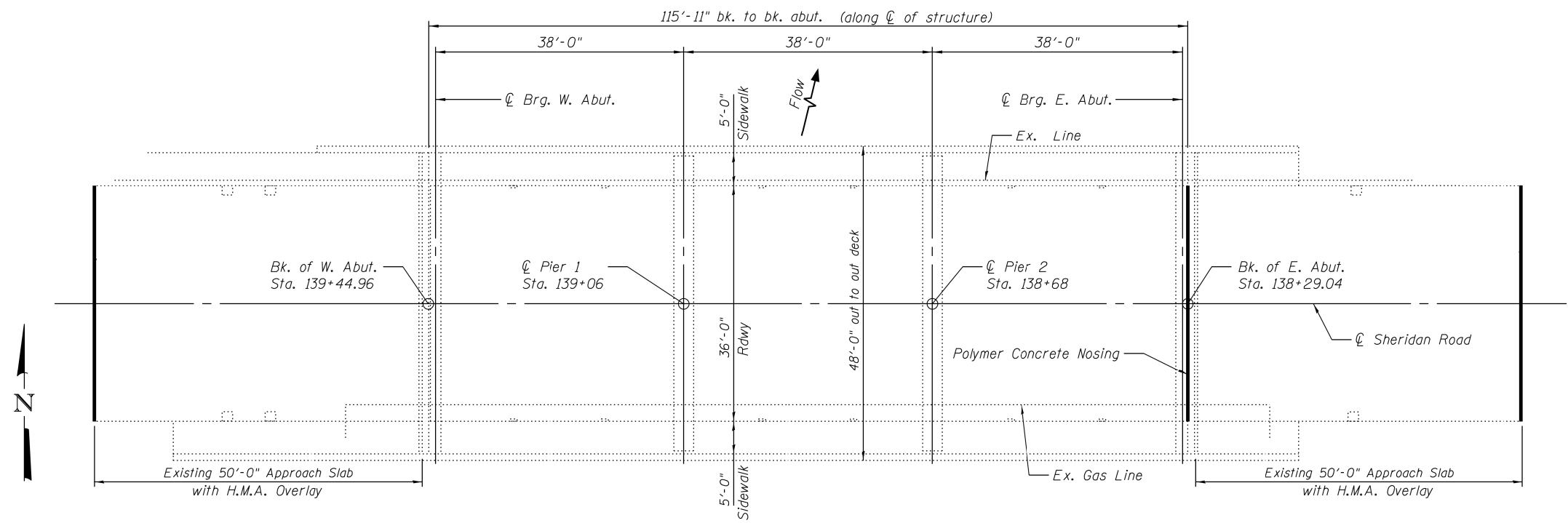
Ø 0042

REV-SEP

FOR INFORMATION ONLY



ELEVATION



PLAN

MODEL: Default
 FILE: h:\a\c\proj\planroom\dat\illinois.gov\PWIDOT\Documents\DOT_Offices\District_1\Projects\0101521\CADD\Drawings\0101521-eh-1-bp.dgn

USER NAME = paraynoal	DESIGNED -	REVISED -
	DRAWN -	REVISED -
PLOT SCALE = 100.0000' / in.	CHECKED -	REVISED -
PLOT DATE = 8/21/2020	DATE -	REVISED -

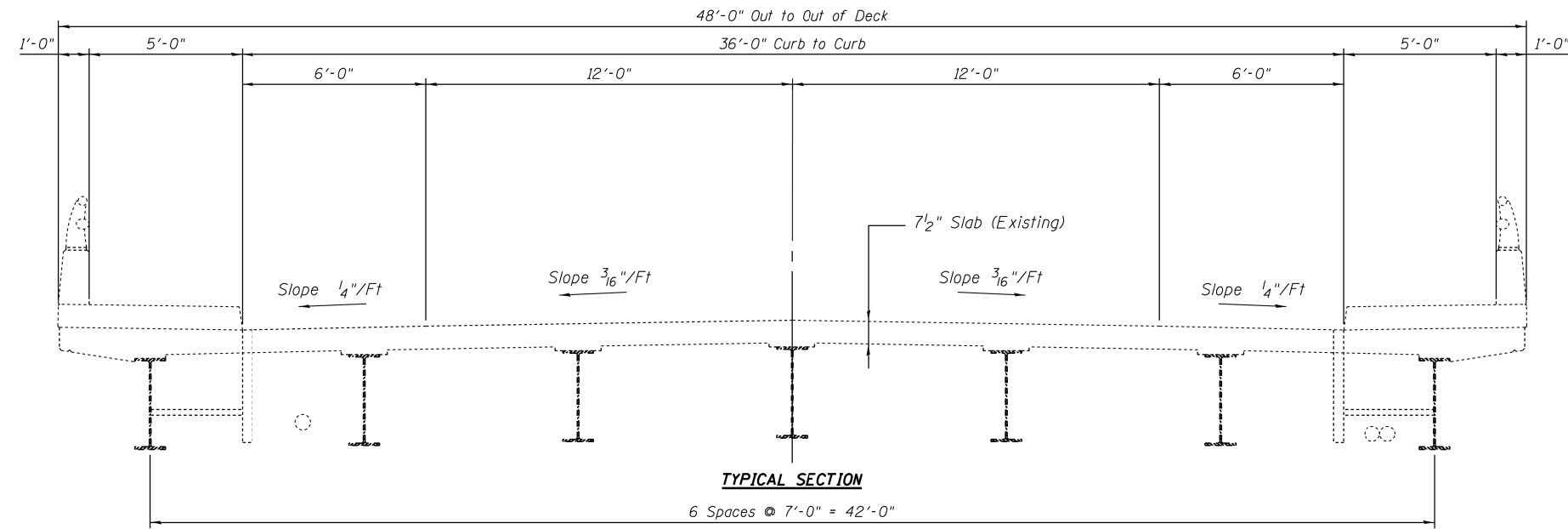
**STATE OF ILLINOIS
DEPARTMENT OF TRANSPORTATION**

**LOCATION 1: EXISTING BRIDGE PLANS
LAKE-COOK ROAD OVER RAVINE (SN: 016-0616)**

SCALE: SHEET 1 OF 5 SHEETS STA. TO STA.

F.A.U. RTE. 3726 3509	SECTION 2020-228-BP	COUNTY COOK	TOTAL SHEETS 25	SHEET NO. 4
CONTRACT NO. 62M88				
ILLINOIS FED. AID PROJECT				

FOR INFORMATION ONLY



MODEL: Default
 FILE: \\nashville.pw.gov\pub\baronm.d\illinois.gov\PW\DOT\Documents\DOT_Offices\District 1\Projects\101521\CAD\Drawings\Design\101521-Sub-1\baron.dgn

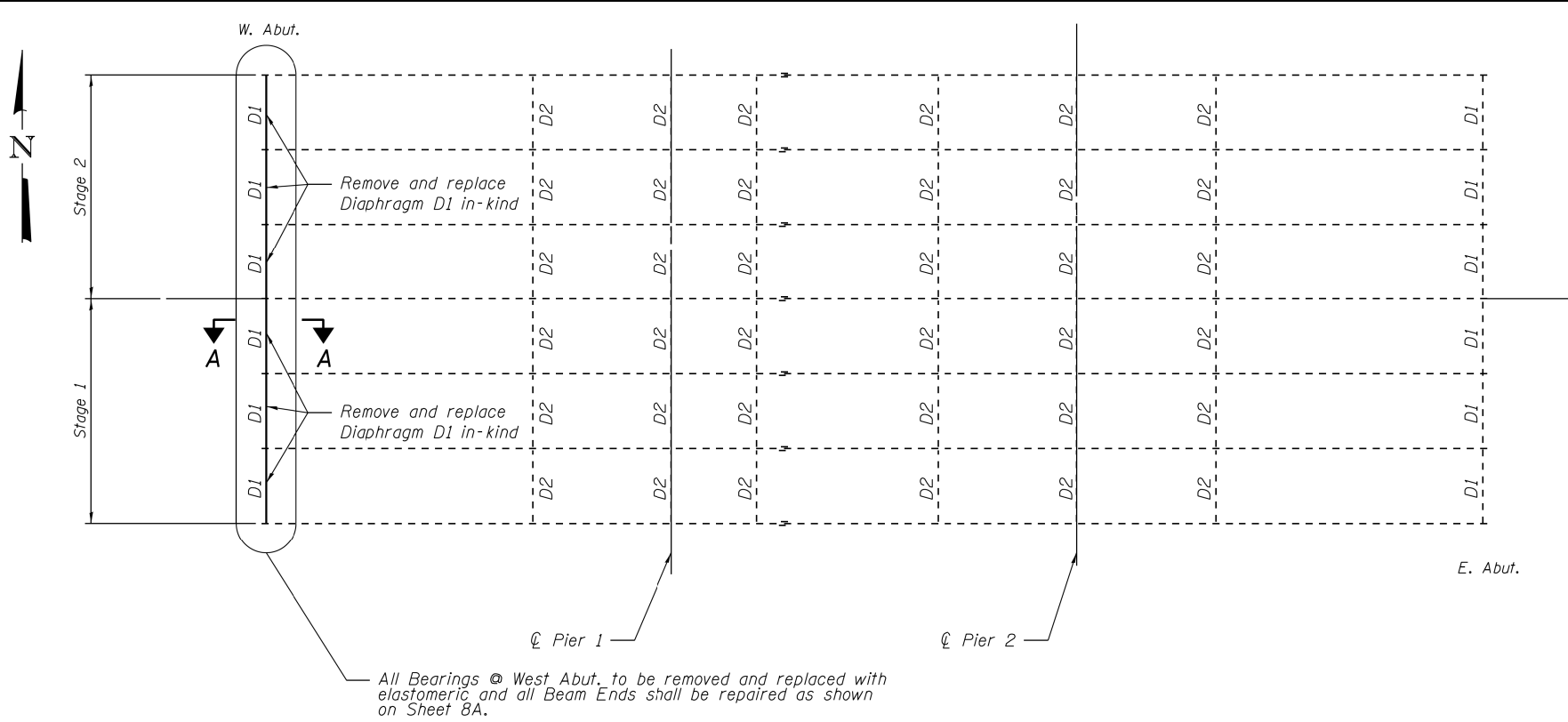
USER NAME = paraynoal	DESIGNED -	REVISED -
	DRAWN -	REVISED -
PLOT SCALE = 100.0000' / in.	CHECKED -	REVISED -
PLOT DATE = 8/21/2020	DATE -	REVISED -

STATE OF ILLINOIS
DEPARTMENT OF TRANSPORTATION

LOCATION 1: EXISTING BRIDGE TYPICAL SECTION DETAIL
LAKE-COOK ROAD OVER RAVINE (SN: 016-0616)

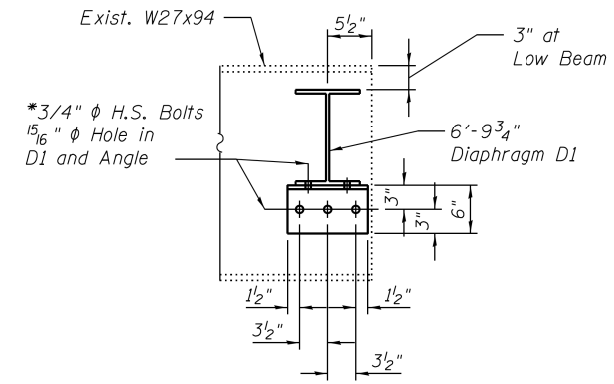
SCALE: SHEET 2 OF 5 SHEETS STA. TO STA.

F.A.U. RTE. 3726 3509	SECTION 2020-228-BP	COUNTY COOK	TOTAL SHEETS 25	SHEET NO. 5
CONTRACT NO. 62M88				ILLINOIS FED. AID PROJECT

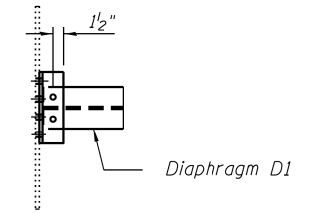


FRAMING PLAN

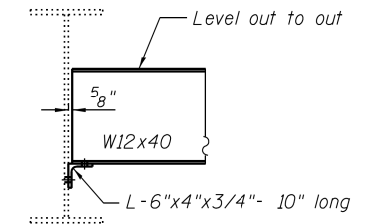
FOR INFORMATION ONLY



SECTION A-A



PLAN



ELEVATION

* Note:
Location of bolt holes maybe adjusted so that angle on opposite side share bolts.

INTERIOR DIAPHRAGM D1

Existing & Proposed
6 Required

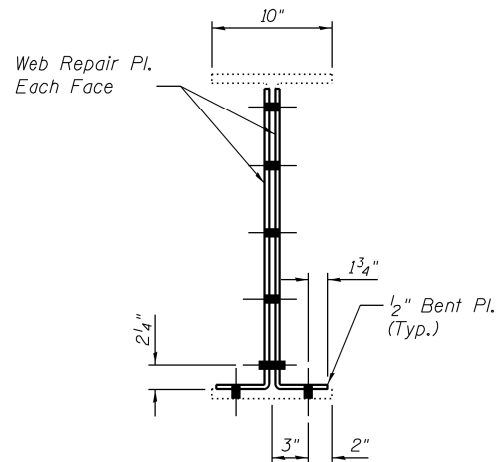
Note:
Remove existing Angles using air-arc method and grind smooth all weld material remaining on web. Cost included with Structural Steel Removal. Care must be taken not to damage beam webs.
Two Hardened Washers shall be required over 1 5/16" phi holes in angles and beam.

USER NAME = paraynoal	DESIGNED -	REVISED -
	DRAWN -	REVISED -
PLOT SCALE = 100.0000' / in.	CHECKED -	REVISED -
PLOT DATE = 8/21/2020	DATE -	REVISED -

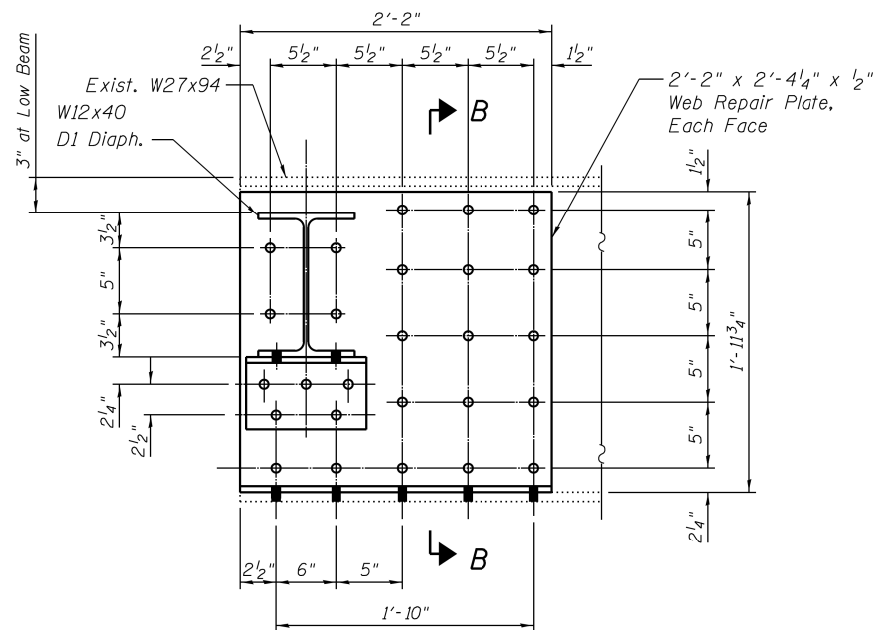
**STATE OF ILLINOIS
DEPARTMENT OF TRANSPORTATION**

LOCATION 1: FRAMING PLAN AND DIAPHRAGM DETAILS	
LAKE-COOK ROAD OVER RAVINE (SN: 016-0616)	
SCALE:	SHEET 3 OF 5 SHEETS STA. TO STA.

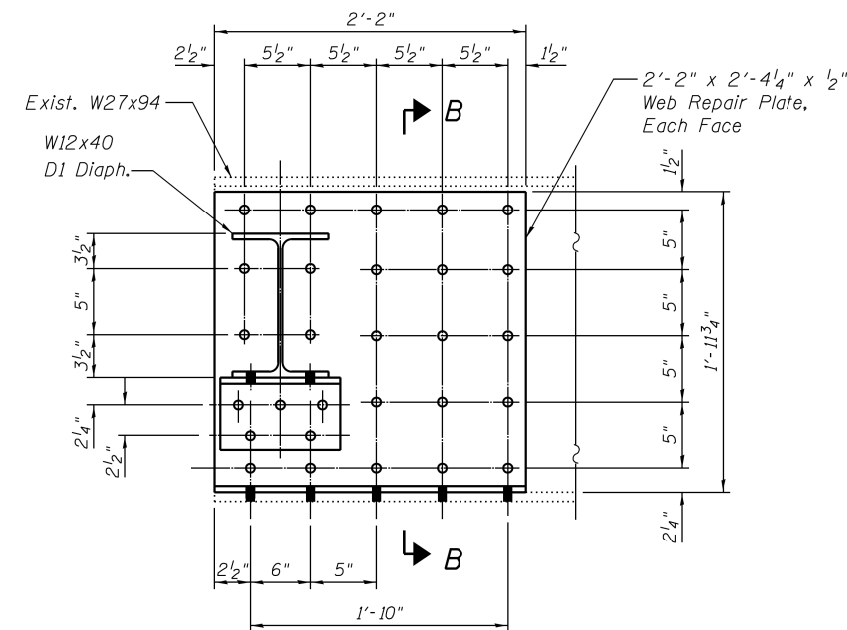
F.A.U. RTE. 3726-3509	SECTION 2020-228-BP	COUNTY COOK	TOTAL SHEETS 25	SHEET NO. 6
ILLINOIS			FED. AID PROJECT	
CONTRACT NO. 62M88				



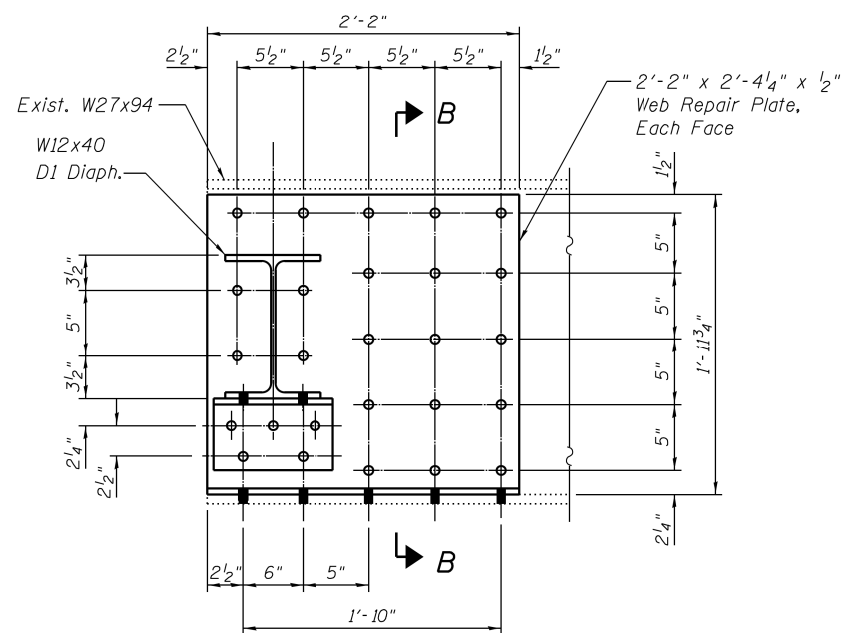
SECTION B-B



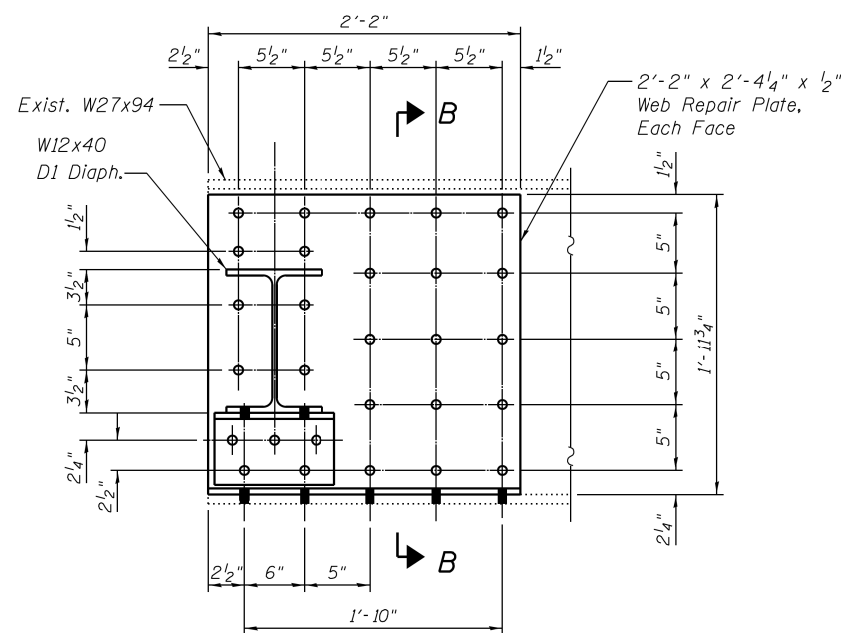
ELEVATION BEAMS 1 & 7



ELEVATION BEAMS 2 & 6



ELEVATION BEAMS 3 & 5



ELEVATION BEAM 4

FOR INFORMATION ONLY

BEAM WEB REPAIR DETAILS

Note:
All web repairs shall be made using
7/8" φ bolts in 1 5/8" φ holes.

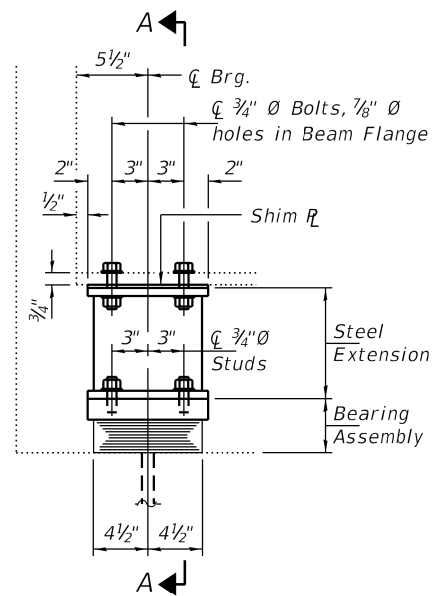
USER NAME = paraynoal	DESIGNED -	REVISED -
PLOT SCALE = 100.0000' / in.	DRAWN -	REVISED -
PLOT DATE = 8/21/2020	CHECKED -	REVISED -
	DATE -	REVISED -

STATE OF ILLINOIS
DEPARTMENT OF TRANSPORTATION

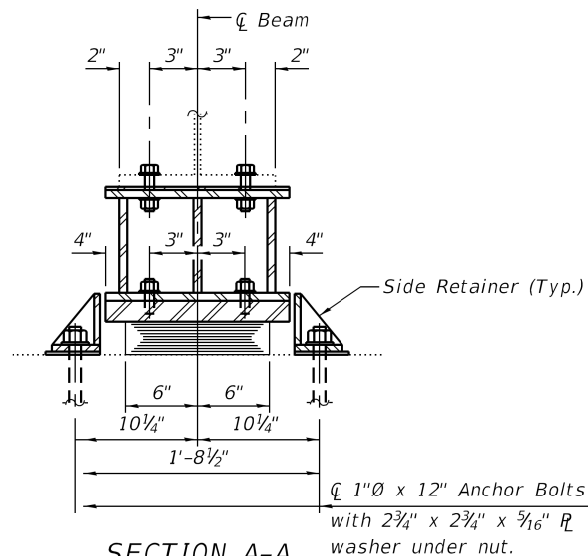
LOCATION 1: FRAMING PLAN AND DIAPHRAGM DETAILS
LAKE-COOK ROAD OVER RAVINE (SN: 016-0616)

SCALE: SHEET 4 OF 5 SHEETS STA. TO STA.

F.A.U. RTE. 3726-3509	SECTION 2020-228-BP	COUNTY COOK	TOTAL SHEETS 25	SHEET NO. 7
ILLINOIS FED. AID PROJECT			CONTRACT NO. 62M88	

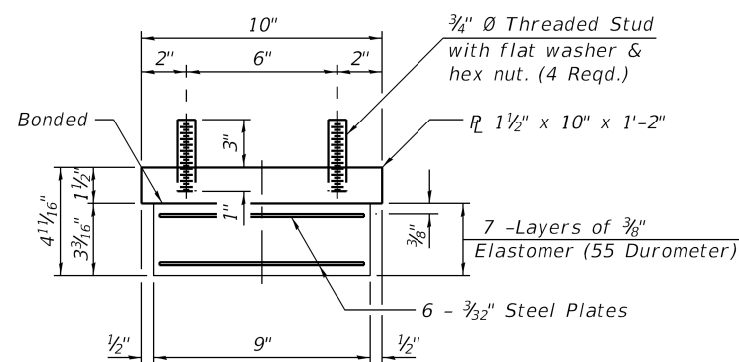


ELEVATION AT ABUTMENT



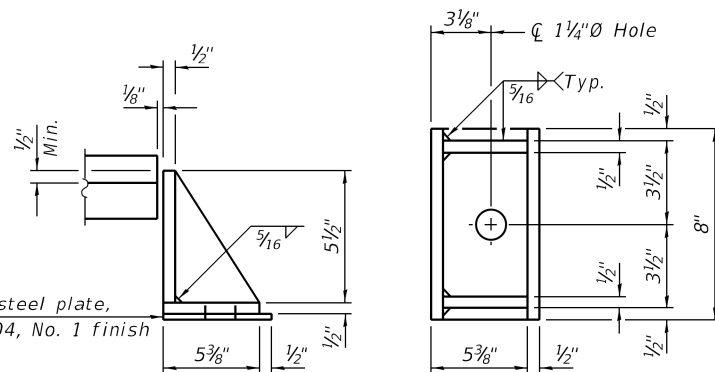
SECTION A-A

TYPE I ELASTOMERIC EXP. BRG.



BEARING ASSEMBLY

Note:
Shim plates shall not be placed under Bearing Assembly.



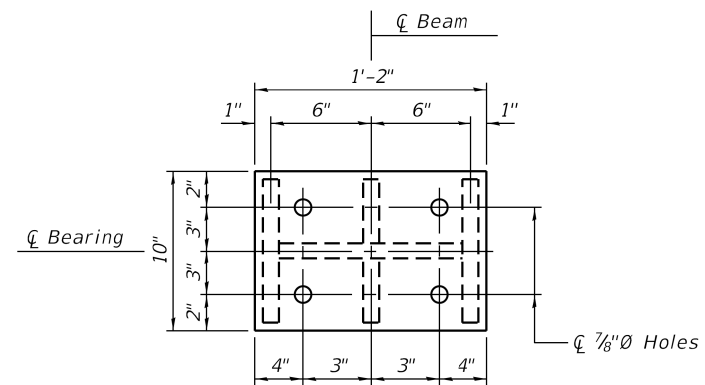
SIDE RETAINER

Equivalent rolled angle with stiffeners will be allowed in lieu of welded plates.

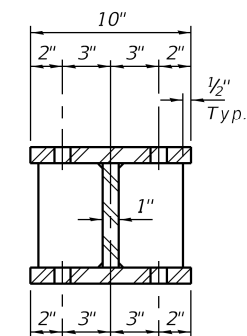
BEAM REACTIONS

R _D	(K)	14.7
R _L	(K)	36.3
Imp.	(K)	10.9
R (Total)	(K)	61.9

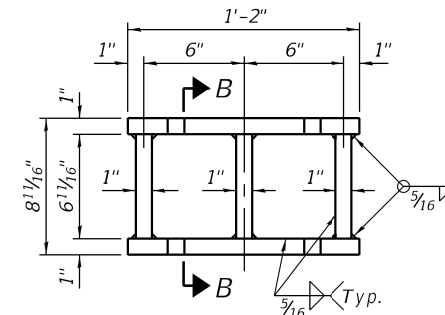
Notes:
Diaphragm removal and reinstallation may be required to facilitate drilling holes. Cost included with Furnishing and Erecting Structural Steel.
New steel extensions, shim plates and connection bolts are included with Furnishing and Erecting Structural Steel.
Prior to ordering any material, the Contractor shall verify in the field all bearing height and shim thickness dimensions. Adjustment must account for deck heave due to pack rust (if present).
Min. jack capacity = 30 Tons.
Anchor bolts shall be ASTM F1554 all-thread (or an Engineer-approved alternate material) of the grade(s) and diameter(s) specified. ASTM A307 Grade C anchor bolts may be used in lieu of ASTM F1554 Grade 36 (Fy=36ksi). The corresponding specified grade of AASHTO M314 anchor bolts may be used in lieu of ASTM F1554.
Drilled and set anchor bolts shall be installed according to Article 521.06 of the Standard Specifications.
Cost of Side retainers and Stainless Steel plates shall be included in the cost of Elastomeric Bearing Assembly, Type I.



PLAN TOP AND BOTTOM PLATE



SECTION B-B



STEEL EXTENSION DETAIL

FOR INFORMATION ONLY

USER NAME = paraynoal	DESIGNED -	REVISED -
PLOT SCALE = 100.0000' / in.	DRAWN -	REVISED -
PLOT DATE = 8/21/2020	CHECKED -	REVISED -
	DATE -	REVISED -

STATE OF ILLINOIS
DEPARTMENT OF TRANSPORTATION

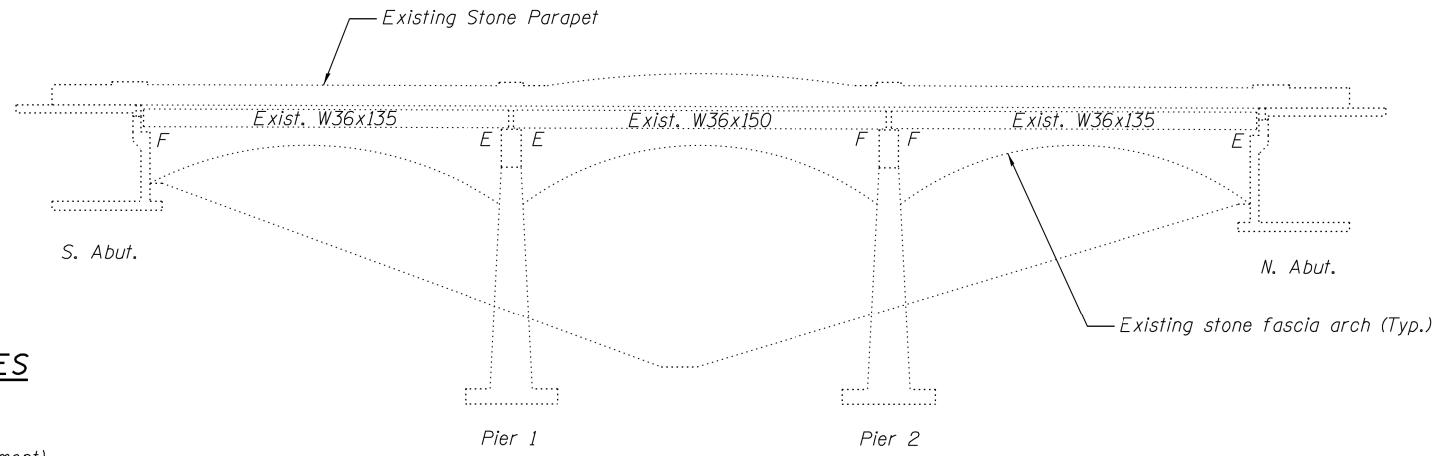
LOCATION 1: BEARING DETAILS
LAKE-COOK ROAD OVER RAVINE (SN: 016-0616)

SCALE: SHEET 5 OF 5 SHEETS STA. TO STA.

F.A.U. RTE. 3726-3509	SECTION 2020-228-BP	COUNTY COOK	TOTAL SHEETS 25	SHEET NO. 8
CONTRACT NO. 62M88				
ILLINOIS FED. AID PROJECT				

Existing Structure:
 Existing Structure No. 016-0617 was built in 1923 as SBI 42 Section 112X-B.
 In 1979, under FAU 3509 Section 112-BR, the superstructure was replaced.
 Existing Structure is a three span reinforced concrete slab on steel beams
 between closed abutments, 189' bk. to bk. abutments, 40'-2" out to out deck.
 Bridge will be closed to traffic during construction.

Salvage: None



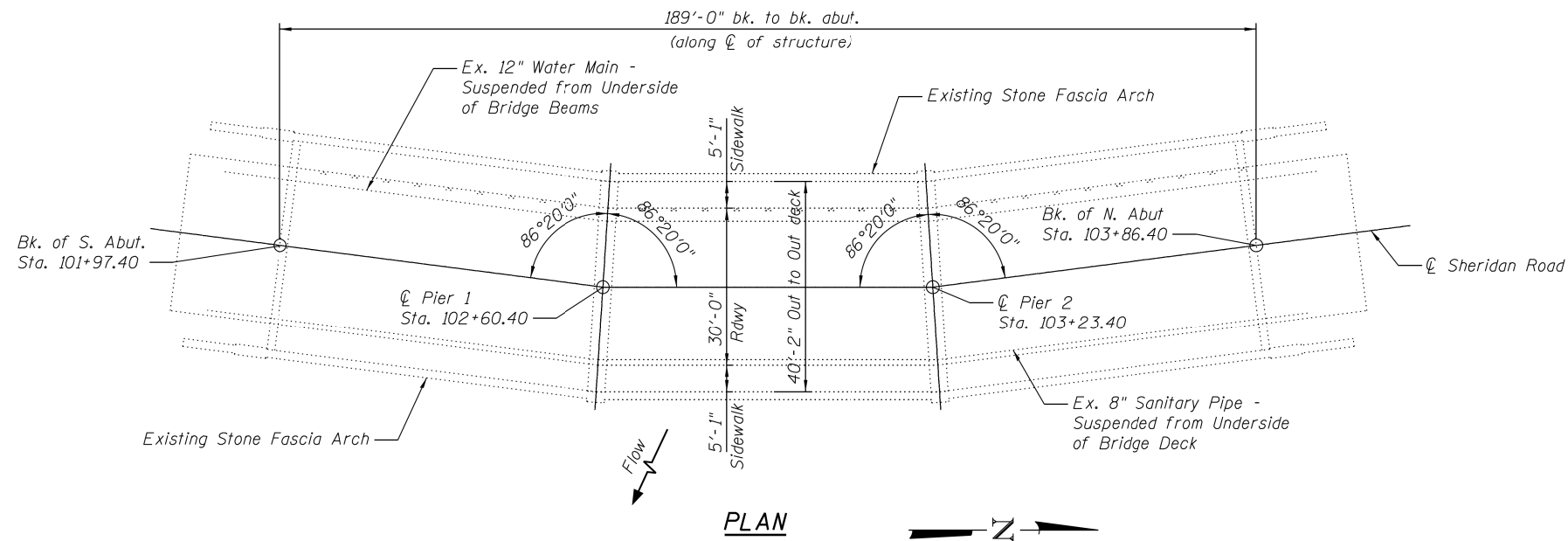
DESIGN STRESSES

(New Work)

$f'_c = 3,500$ psi
 $f_y = 60,000$ psi (Reinforcement)
 $f_y = 50,000$ psi (Structural Steel)

ELEVATION

FOR INFORMATION ONLY



PLAN

LOCATION SKETCH

MODEL: Default
 FILE: h:\mfc\proj\pub\arcom.dwg\illinois.gov\RWIDOT\Documents\DOT_Offices\District_1\Projects\0101521\CADD\Drawings\0101521-sh-rb-01.dwg

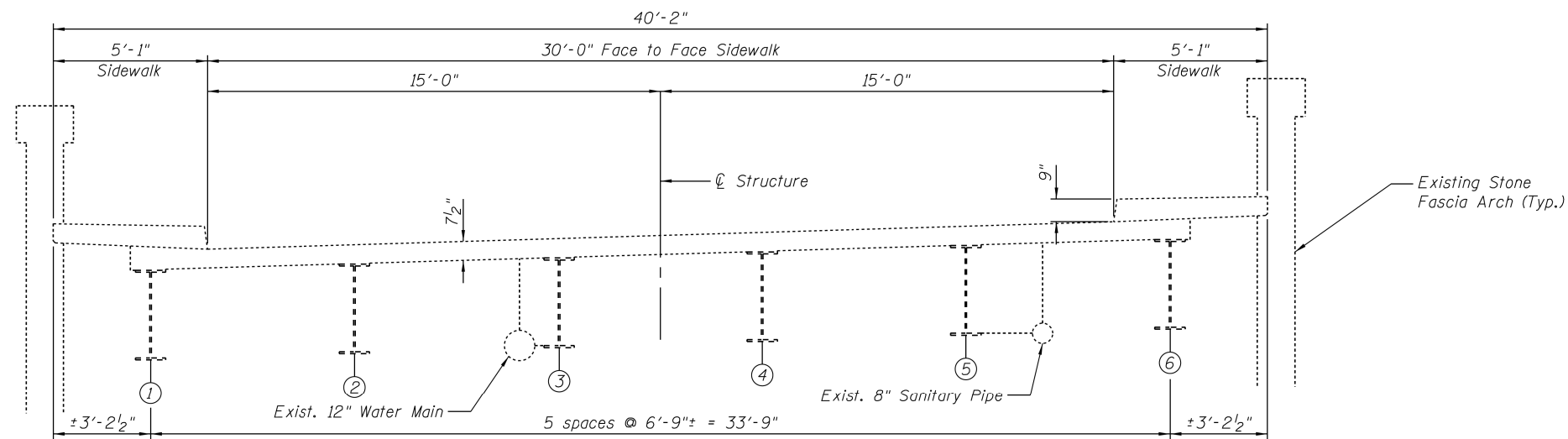
USER NAME = paraynoal	DESIGNED -	REVISED -
	DRAWN -	REVISED -
PLOT SCALE = 100.0000' / in.	CHECKED -	REVISED -
PLOT DATE = 8/21/2020	DATE -	REVISED -

**STATE OF ILLINOIS
 DEPARTMENT OF TRANSPORTATION**

**LOCATION 2: EXISTING BRIDGE GENERAL PLAN AND ELEVATION
 SHERIDAN ROAD OVER RAVINE (SN 016-0617)**

SCALE: SHEET 1 OF 5 SHEETS STA. TO STA.

F.A.U. RTE. 3726-3509	SECTION 2020-228-BP	COUNTY COOK	TOTAL SHEETS 25	SHEET NO. 9
CONTRACT NO. 62M88			ILLINOIS FED. AID PROJECT	



EXISTING
(Looking North)

FOR INFORMATION ONLY

MODEL: Default
 FILE: \\nas01\share\arcgis\dot\Illinois\proj\WIP\DOT\Documents\DOT_Office\Drawings\1\Project\101521\CADD\Drawings\101521-Sub-Plan.dwg

USER NAME = paraynoal	DESIGNED -	REVISED -
	DRAWN -	REVISED -
PLOT SCALE = 100.0000' / in.	CHECKED -	REVISED -
PLOT DATE = 8/21/2020	DATE -	REVISED -

**STATE OF ILLINOIS
DEPARTMENT OF TRANSPORTATION**

**LOCATION 2: EXISTING BRIDGE TYPICAL SECTION DETAIL
SHERIDAN ROAD OVER RAVINE (SN 016-0617)**

SCALE: SHEET 2 OF 5 SHEETS STA. TO STA.

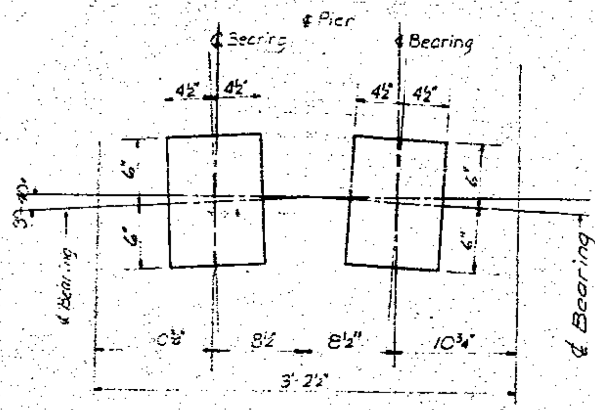
F.A.U. RTE.	SECTION	COUNTY	TOTAL SHEETS	SHEET NO.
3726 3509	2020-228-BP	COOK	25	10
CONTRACT NO. 62M88				
ILLINOIS FED. AID PROJECT				

ROUTE NO.	SECTION	COUNTY	TOTAL SHEETS	SHEET NO.
2001 014BP	112-BR	COOK	24	7
FED. ROAD DIST. NO. 1 ILLINOIS PROJECT				

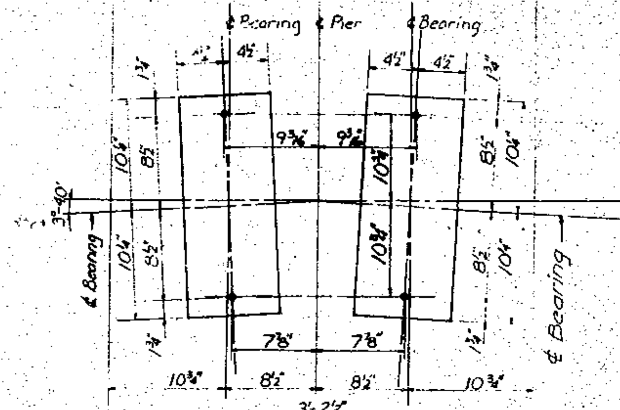
SHEET NO. 7
OF 11 SHEETS

F.I. SHEET	SECTION	COUNTY	TOTAL SHEETS	SHEET NO.
VAR	2001 014BP	WILL/COOK	24	11
STA. TO STA.				
FED. ROAD DIST. NO. 1 ILLINOIS PROJECT				

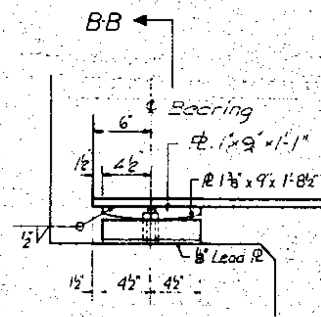
HANSEN SCHNEEMAN & ASSOCIATES, INC.
CONSULTING ENGINEERS
223 West Jackson Blvd., Suite 703
Chicago, Illinois - 60604



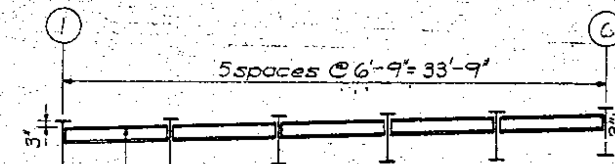
PLAN OF BEARING AT PIER 1



PLAN OF BEARING AT PIER 2

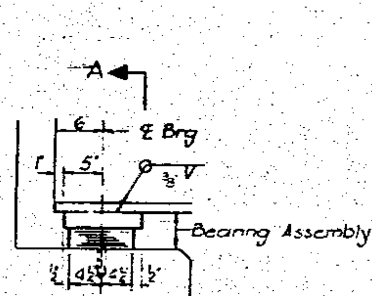


SECTION AT SOUTH ABUTMENT

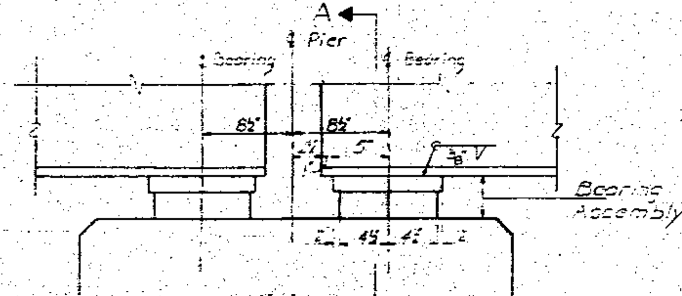


ELEVATION OF DIAPHRAGM D&D2

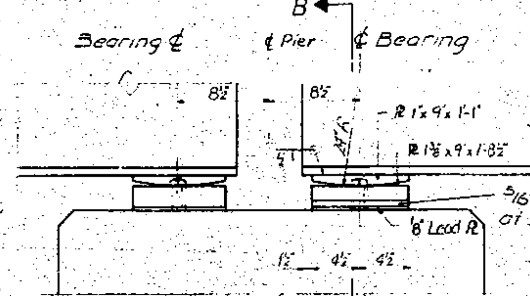
BEARING DETAILS
STONE BRIDGE
FAUS. RTE. 3609 SHERIDAN ROAD
SECTION 112-BR
COOK COUNTY
STATION 102+91.9



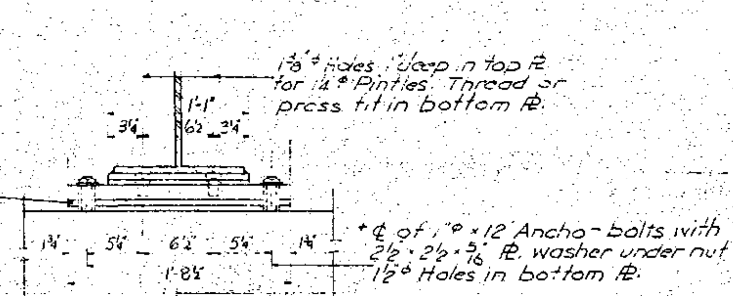
SECTION AT NORTH ABUTMENT



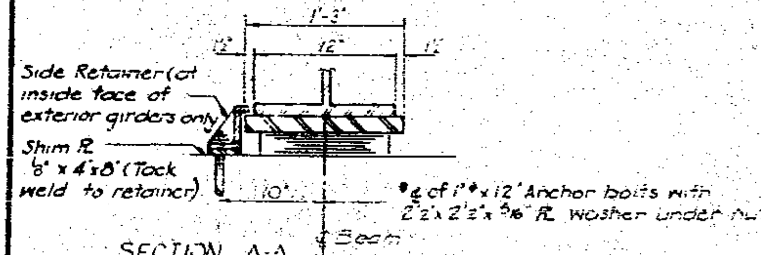
ELEVATION OF BEARING AT PIER 1



ELEVATION OF BEARING AT PIER 2

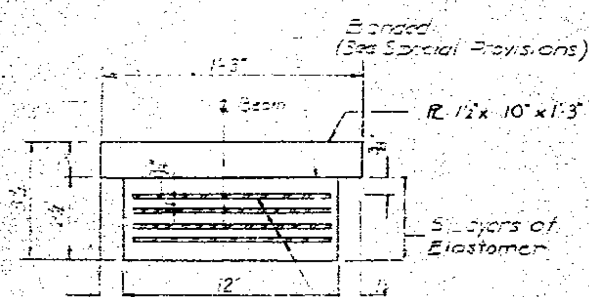


SECTION BE

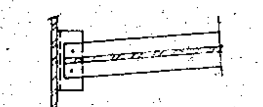


SECTION A-A

*Note: After beams have been erected holes at expansion bearings shall be drilled and anchor bolts grouted in place. Anchor bolts at fixed bearings may be built into the masonry.

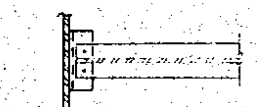


BEARING ASSEMBLY

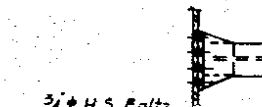


DETAIL OF DIPH. D2

Note: Harden Washers shall require 1/2" holes



DETAIL OF DIPH. D



DIAPHRAGM D1

Slope out to out similar to Diaph D2 (See elevation above)

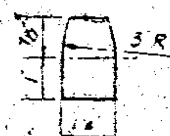
DIAPHRAGM D&D2
10-D-Required
20-D2-Required

DIAPHRAGM D1
30 Required

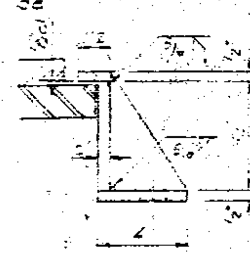
FOR INFORMATION ONLY

FOR INFORMATION ONLY

DESIGNED	SCN
CHECKED	E.C.
DRAWN	S.K.
CHECKED	SCN



PINTLE



SIDE RETAINER

STATE OF ILLINOIS
DEPARTMENT OF TRANSPORTATION

LOCATION 2: EXISTING BRIDGE BEARING DETAILS
SHERIDAN ROAD OVER RAVINE (SN 016-0617)

ILLINOIS DEPARTMENT OF TRANSPORTATION
BRIDGE 3 SN: 016-0617
SHERIDAN ROAD OVER
RAVINE NO. 1

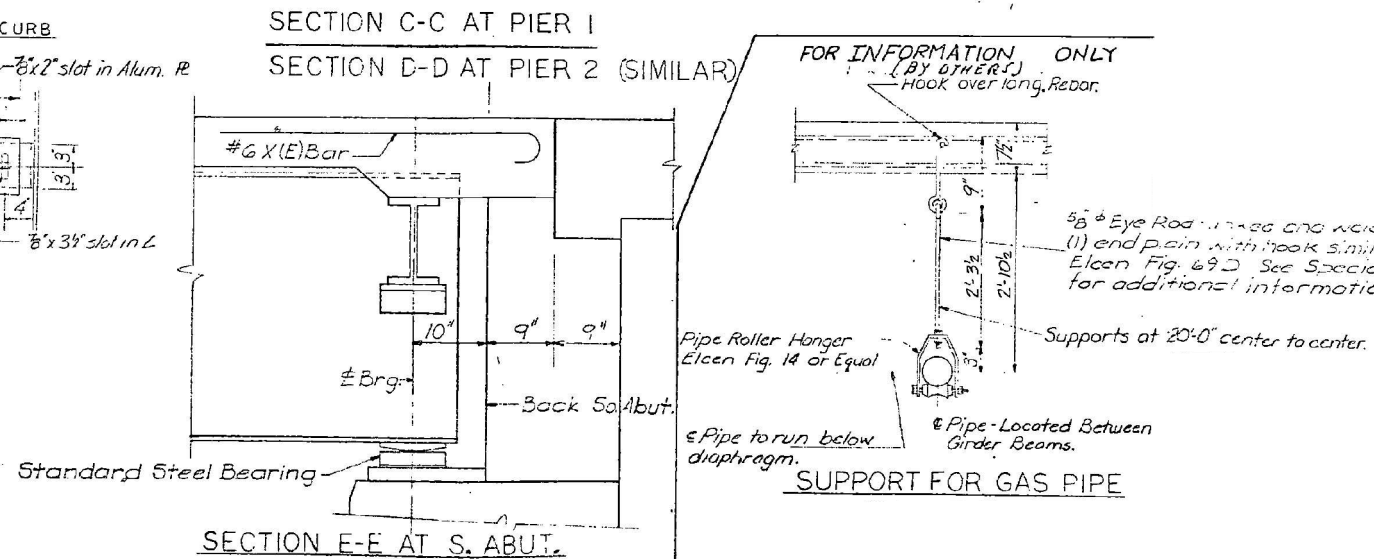
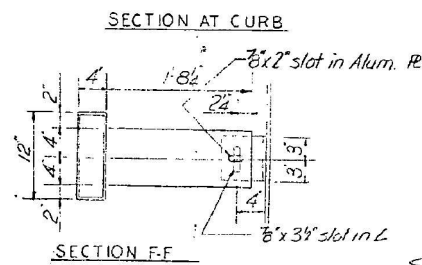
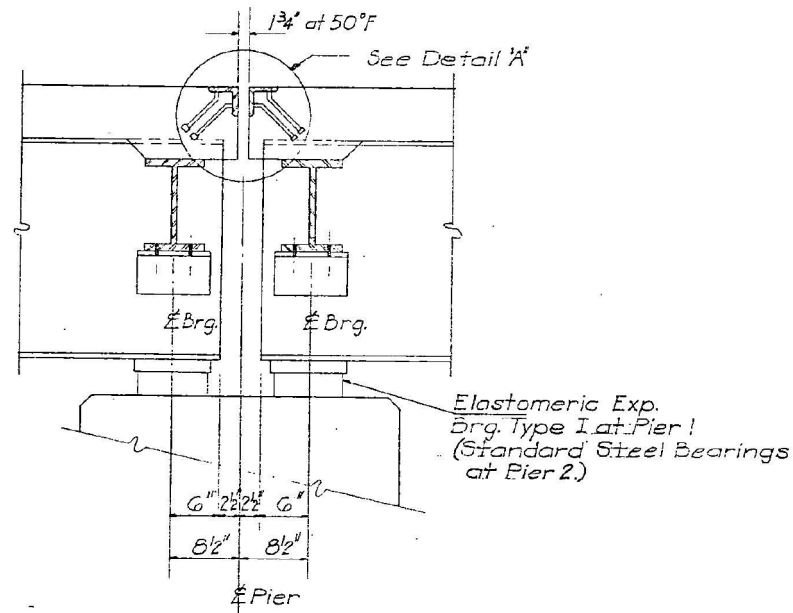
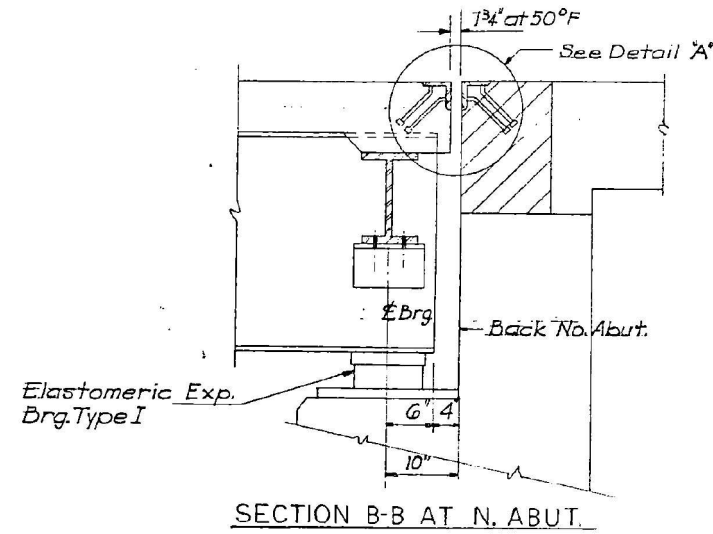
REVISIONS	
NAME	DATE

SCALE: VERT. HORIZ. DATE
DRAWN BY DESIGNED BY CHECKED BY

USER NAME = paraynoal	DESIGNED -	REVISED -
PLOT SCALE = 100,0000' / in.	DRAWN -	REVISED -
PLOT DATE = 8/21/2020	CHECKED -	REVISED -
	DATE -	REVISED -

SCALE:	SHEET 3 OF 5 SHEETS	STA. TO STA.	F.A.U. RTE. 3726 3509	SECTION 2020-228-BP	COUNTY COOK	TOTAL SHEETS 25	SHEET NO. 11
ILLINOIS FED. AID PROJECT						CONTRACT NO. 62M88	

FOR INFORMATION ONLY



MODEL - Default
 FILE - Model - 3726-3509.dwg
 PLOT DATE = 9/24/2020
 PROJECT: I:\Projects\101521\CADD\Drawings\101521.dwg

USER NAME = pelaymoal	DESIGNED -	REVISED -
	DRAWN -	REVISED -
PLOT SCALE = 100.0000' / in.	CHECKED -	REVISED -
PLOT DATE = 9/24/2020	DATE -	REVISED -

STATE OF ILLINOIS
DEPARTMENT OF TRANSPORTATION

LOCATION 2: EXISTING BRIDGE: ABUTMENT DETAILS
SHERIDAN ROAD OVER RAVINE (SN 016-0617)

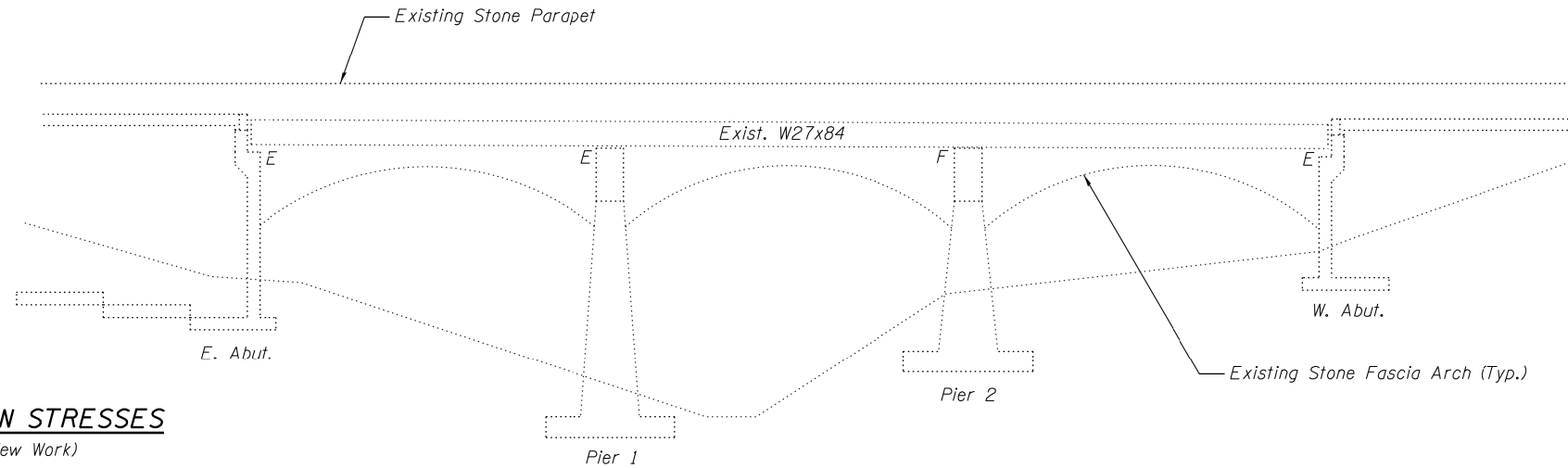
SCALE: SHEET 3 OF 5 SHEETS STA. TO STA.

F.A.U. RTE.	SECTION	COUNTY	TOTAL SHEETS	SHEET NO.
3726 3509	2020-228-BP	COOK	25	11A
CONTRACT NO. 62M88				
ILLINOIS FED. AID PROJECT				

Existing Structure:
 Existing Structure No. 016-0618 was built in 1923 as SBI 42 Section 112.
 In 1979, under FAU 3509 Section 112-BR, the superstructure was replaced.
 Existing Structure is a three span reinforced concrete slab on steel beams
 between closed abutments, 128'-0" bk. to bk. abutments, 40'-2"
 out to out deck.
 Bridge will be closed to traffic during construction.

Salvage: None

FOR INFORMATION ONLY

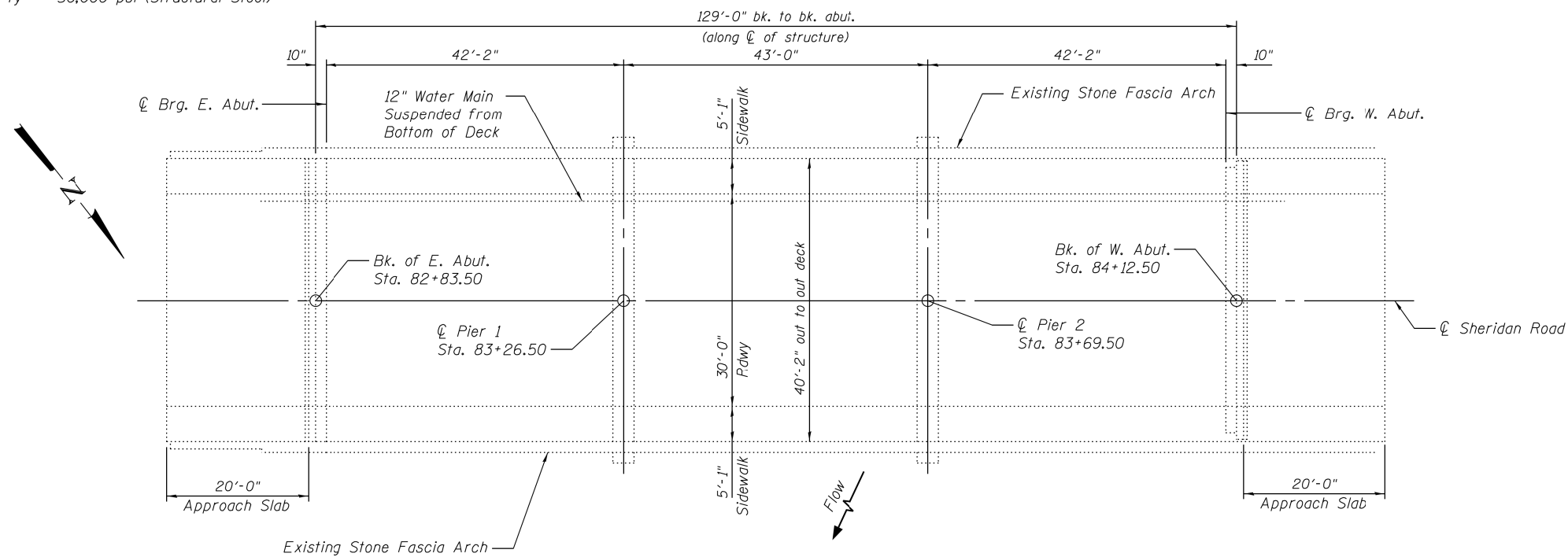


DESIGN STRESSES

(New Work)

$f'_c = 3,500$ psi
 $f_y = 60,000$ psi (Reinforcement)
 $f_y = 50,000$ psi (Structural Steel)

ELEVATION



PLAN

MODEL: Default
 FILE: h:\a\c\p\pub\p\room\dat\illinois.gov\PWIDOT\Documents\DOT_Offices\District 1\Projects\016-0618\016-0618-016-0618.dgn

USER NAME = paraynoal	DESIGNED -	REVISED -
	DRAWN -	REVISED -
PLOT SCALE = 100.0000' / in.	CHECKED -	REVISED -
PLOT DATE = 8/21/2020	DATE -	REVISED -

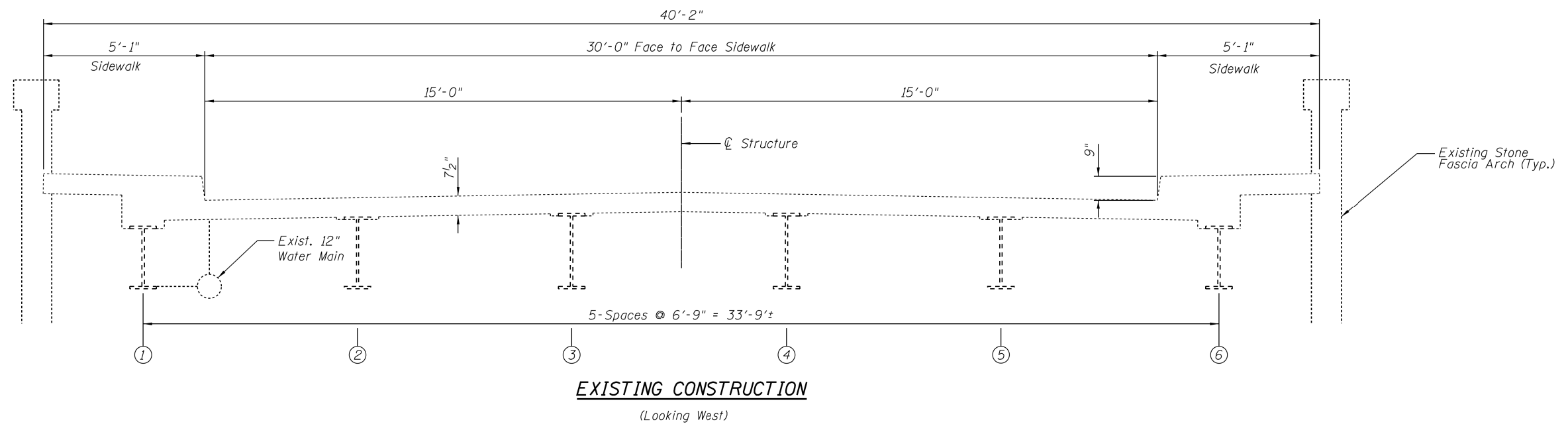
**STATE OF ILLINOIS
 DEPARTMENT OF TRANSPORTATION**

**LOCATION 3: EXISTING BRIDGE PLANS
 LAKE-COOK ROAD OVER RAVINE (SN 016-0618)**

SCALE: SHEET 1 OF 5 SHEETS STA. TO STA.

F.A.U. RTE. 3726-3509	SECTION 2020-228-BP	COUNTY COOK	TOTAL SHEETS 25	SHEET NO. 14
CONTRACT NO. 62M88				ILLINOIS FED. AID PROJECT

FOR INFORMATION ONLY



MODEL: Default
 FILE: \\nrcs-pub\planroom\data\illinois.gov\PWIDOT\Documents\DOT_Offices\District_1\Projects\101521\CADD\Drawings\101521-eh-1-bp.dgn

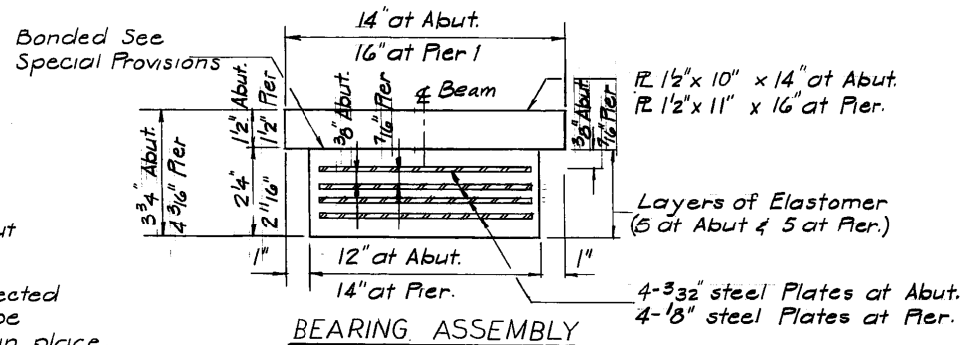
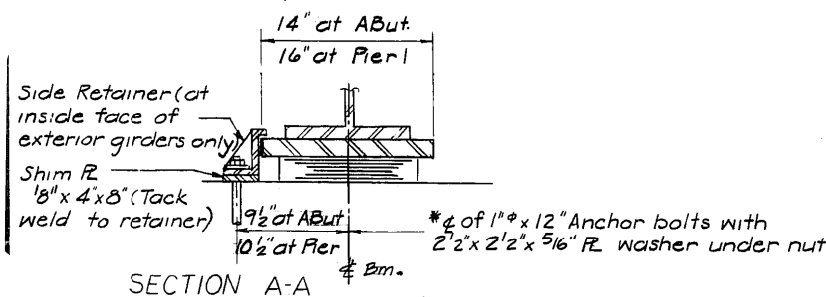
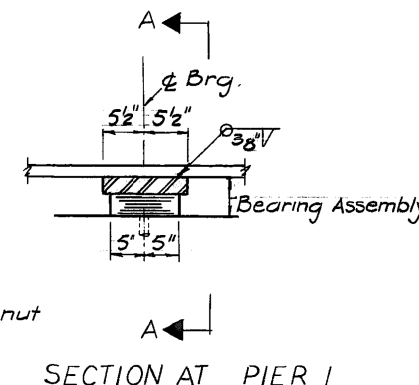
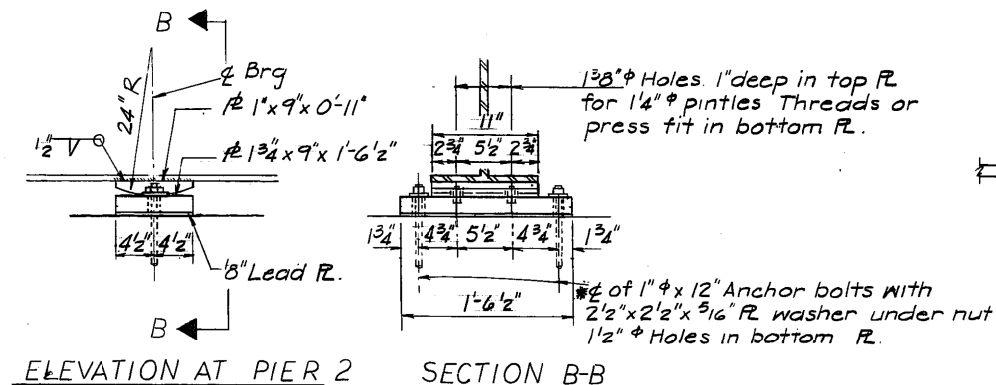
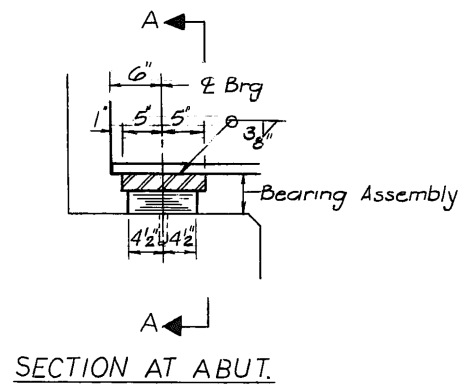
USER NAME = paraynoal	DESIGNED -	REVISED -
	DRAWN -	REVISED -
PLOT SCALE = 100.0000' / in.	CHECKED -	REVISED -
PLOT DATE = 8/21/2020	DATE -	REVISED -

STATE OF ILLINOIS
DEPARTMENT OF TRANSPORTATION

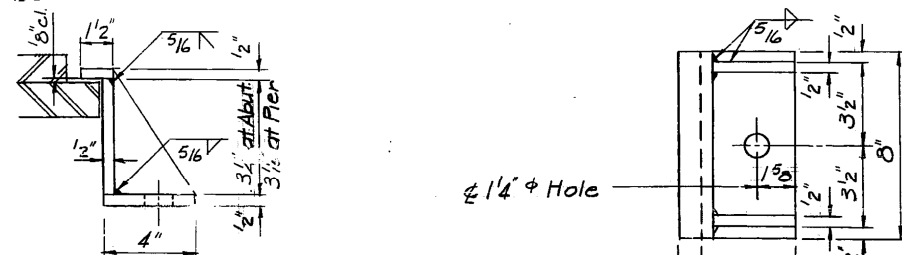
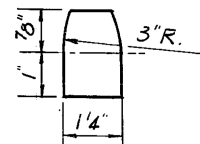
LOCATION 3: EXISTING BRIDGE TYPICAL SECTION DETAIL
LAKE-COOK ROAD OVER RAVINE (SN 016-0618)

SCALE: SHEET 2 OF 5 SHEETS STA. TO STA.

F.A.U. RTE.	SECTION	COUNTY	TOTAL SHEETS	SHEET NO.
3726 3509	2020-228-BP	COOK	25	15
CONTRACT NO. 62M88				
		ILLINOIS	FED. AID PROJECT	



*Note: After beams have been erected holes at expansion bearings shall be drilled and anchor bolts grouted in place. Anchor bolts at fixed bearings may be built into the masonry.



FOR INFORMATION ONLY

MODEL: Default
 FILE: h:\a\c\p\pub\barroom.dwg
 PROJECT: 101521\101521\CADD\Drawings\DOT - Office\Drawings\101521-228-BP.dwg
 PLOT SCALE = 100.0000' / in.
 PLOT DATE = 8/21/2020

USER NAME = paraynoal	DESIGNED -	REVISED -
	DRAWN -	REVISED -
	CHECKED -	REVISED -
	DATE -	REVISED -

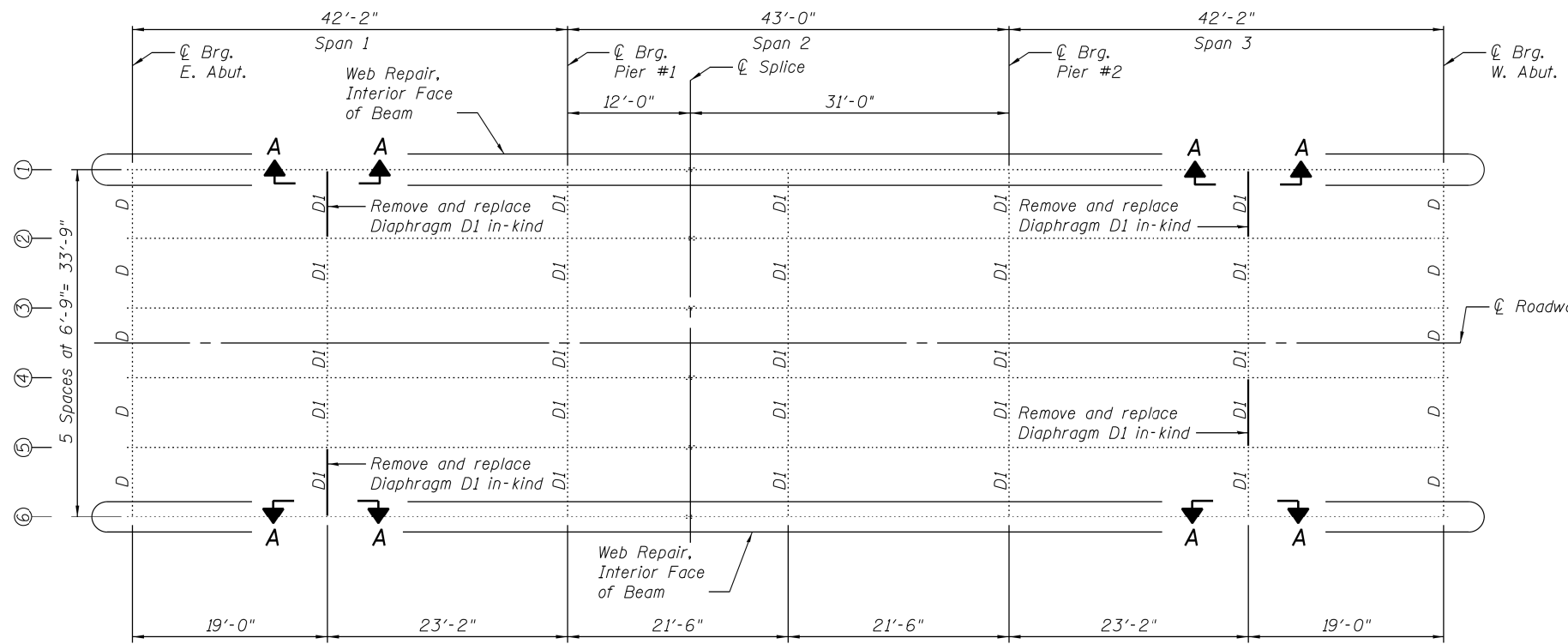
STATE OF ILLINOIS
DEPARTMENT OF TRANSPORTATION

LOCATION 3: EXIST. BRIDGE: BEARING DETAILS
LAKE-COOK ROAD OVER RAVINE (SN 016-0618)

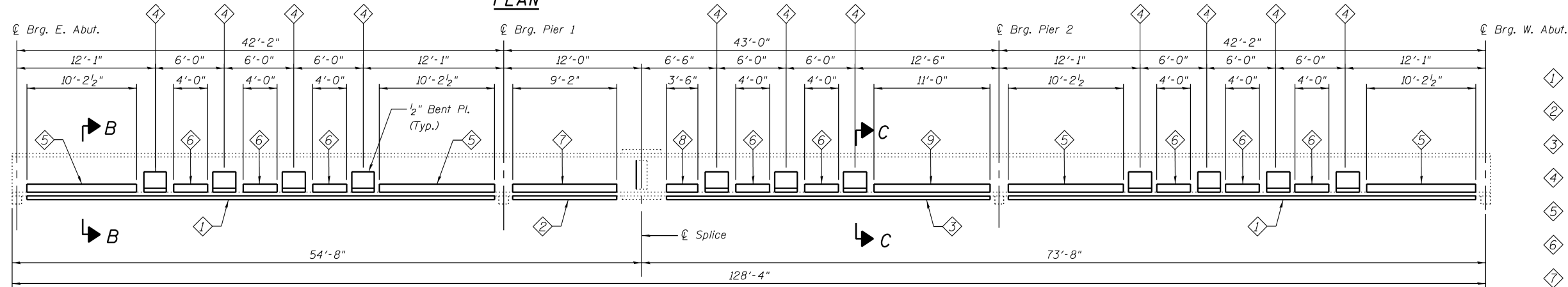
SCALE: SHEET 3 OF 5 SHEETS STA. TO STA.

F.A.U. RTE. 3726 3509	SECTION 2020-228-BP	COUNTY COOK	TOTAL SHEETS 25	SHEET NO. 16
			CONTRACT NO. 62M88	
		ILLINOIS FED. AID PROJECT		

FOR INFORMATION ONLY

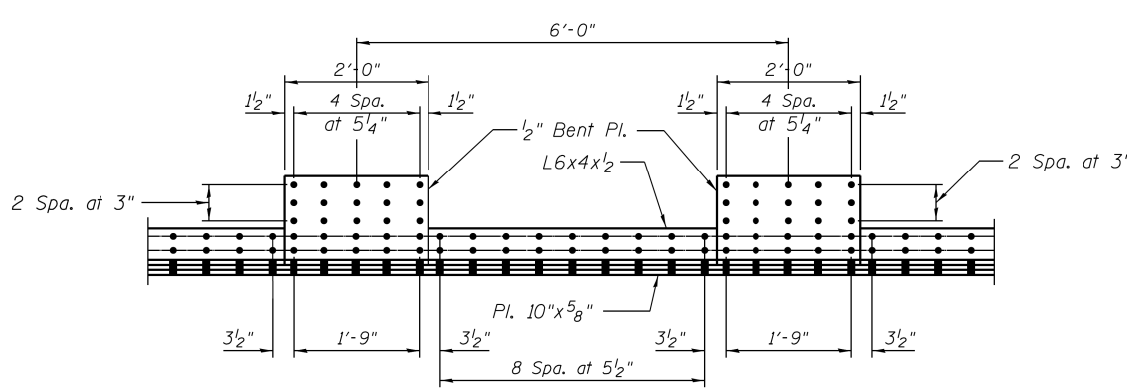


PLAN

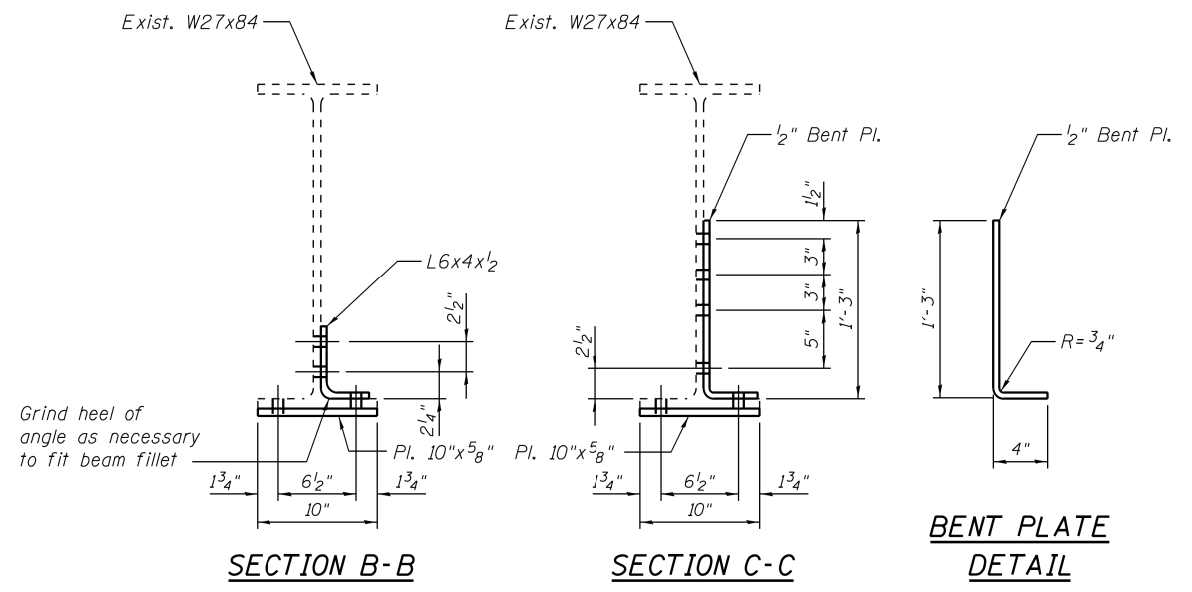


GIRDER ELEVATION

- ① Pl. 10"x5/8" x 40'-5"
- ② Pl. 10"x5/8" x 9'-2"
- ③ Pl. 10"x5/8" x 28'-3"
- ④ Bent Pl. 2'-0" x 1/2" x 1'-7"
- ⑤ L6x4x1/2 x 10'-2 1/2"
- ⑥ L6x4x1/2 x 4'-0"
- ⑦ L6x4x1/2 x 9'-2"
- ⑧ L6x4x1/2 x 3'-6"
- ⑨ L6x4x1/2 x 11'-0"



TYPICAL BOLTING PATTERN



Note:
For Section A-A Diaphragm Details, see Sheet 53A.
Field drill holes using pieces as a template.
All steel repair on this sheet are Primary Members.

MODEL: Default
FILE: \\hpc\p\barcom\dat\links\p\DOT\Documents\DOT - Offices\Dir\ct_1\Projects\01521\CAD\Drawings\01521-eh-1-bp.dwg

USER NAME = paraynoal	DESIGNED -	REVISED -
PLOT SCALE = 100.0000' / in.	DRAWN -	REVISED -
PLOT DATE = 8/21/2020	CHECKED -	REVISED -
	DATE -	REVISED -

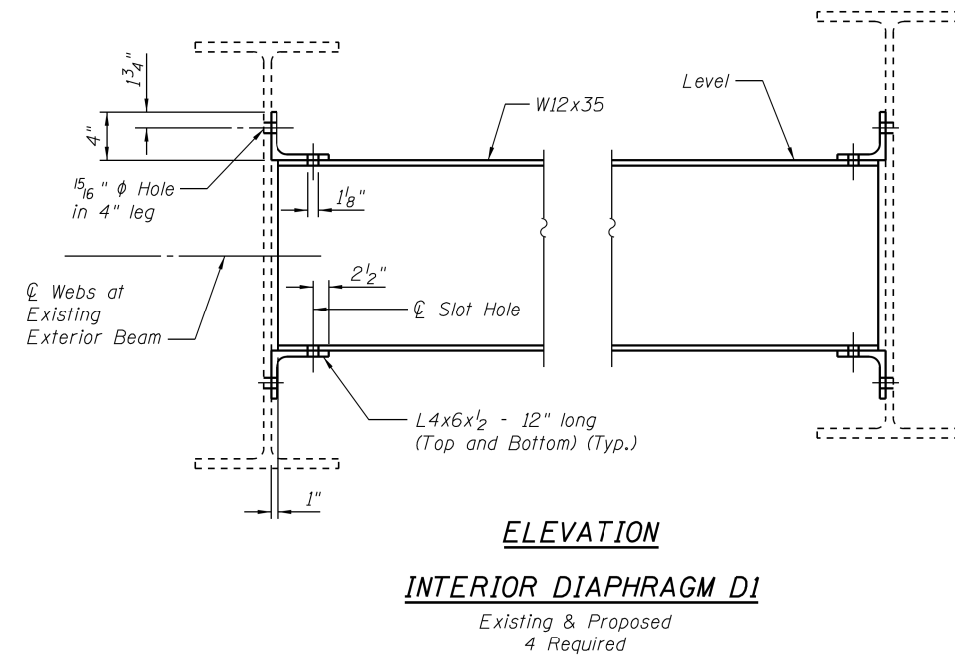
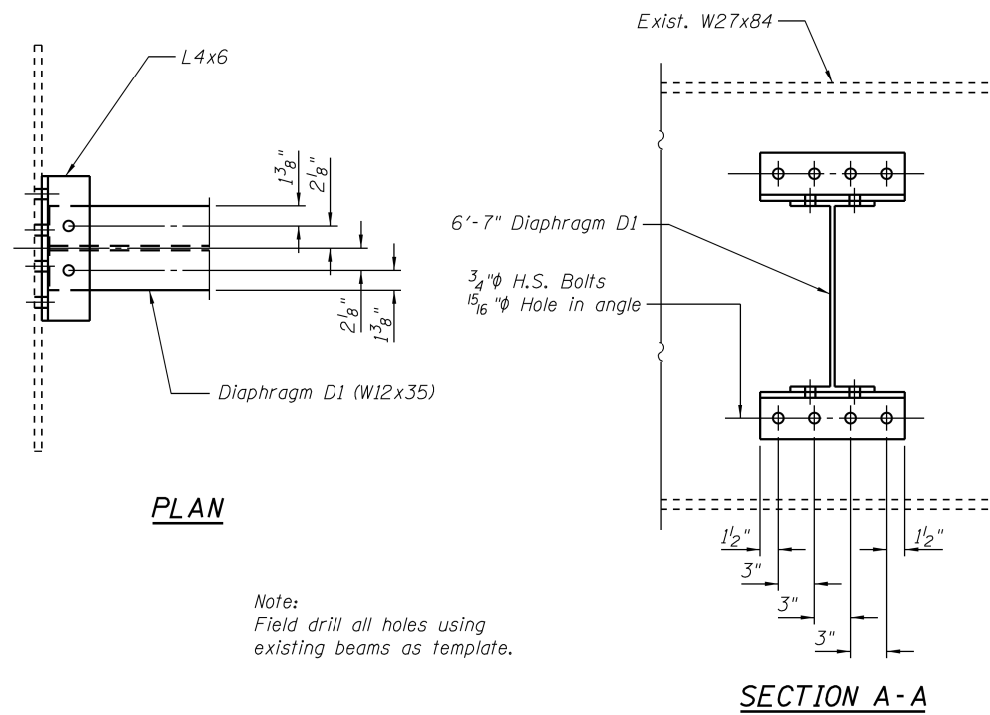
STATE OF ILLINOIS
DEPARTMENT OF TRANSPORTATION

LOCATION 3: EXIST. BRIDGE: FRAMING PLAN AND STEEL REPAIRS DETAIL
LAKE-COOK ROAD OVER RAVINE (SN 016-0618)

F.A.U. RTE. 3726-3509	SECTION 2020-228-BP	COUNTY COOK	TOTAL SHEETS 25	SHEET NO. 17
CONTRACT NO. 62M88				
ILLINOIS FED. AID PROJECT				

SCALE: SHEET 4 OF 5 SHEETS STA. TO STA.

FOR INFORMATION ONLY



Note:
For Framing Plan and Section locations,
see Sheet 53.

MODEL: Default
FILE: h:\a\c\p\uploadroom.d\at\links\pwr\DOT\Documents\DOT_Offices\Diartec_1\Projects\101521\CADD\Drawings\101521-eh-1-bp.dgn

USER NAME = paraynoal	DESIGNED -	REVISED -
	DRAWN -	REVISED -
PLOT SCALE = 100.0000' / in.	CHECKED -	REVISED -
PLOT DATE = 8/21/2020	DATE -	REVISED -

STATE OF ILLINOIS
DEPARTMENT OF TRANSPORTATION

LOCATION 3: EXISTING BRIDGE: STEEL REPAIRS DETAIL
LAKE-COOK ROAD OVER RAVINE (SN 016-0618)

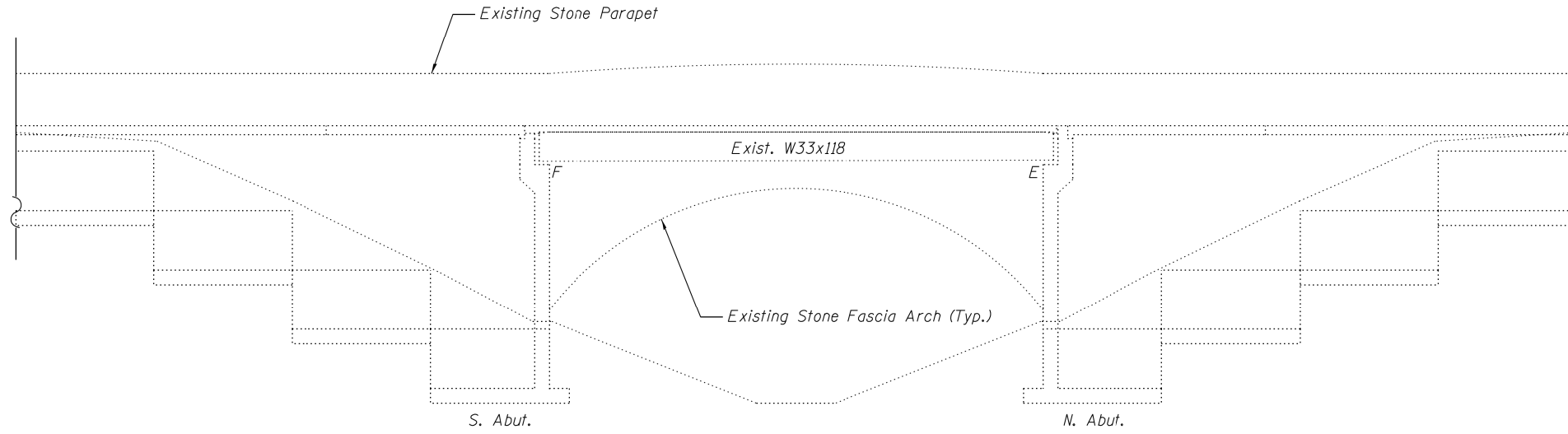
SCALE: SHEET 5 OF 5 SHEETS STA. TO STA.

F.A.U. RTE. 3726-3509	SECTION 2020-228-BP	COUNTY COOK	TOTAL SHEETS 25	SHEET NO. 18
CONTRACT NO. 62M88				
ILLINOIS FED. AID PROJECT				

Existing Structure:
 Existing Structure No. 016-0619 was built in 1923 as SBI 42 Section 112.
 In 1979, under FAU 3509 Section 112-BR, the superstructure was replaced.
 Existing Structure is a single span reinforced concrete slab on steel beams
 between closed abutments, 53'-0" bk. to bk. abutments, 40'-2" out to out deck.
 Bridge will be closed to traffic during construction.

Salvage: None

FOR INFORMATION ONLY

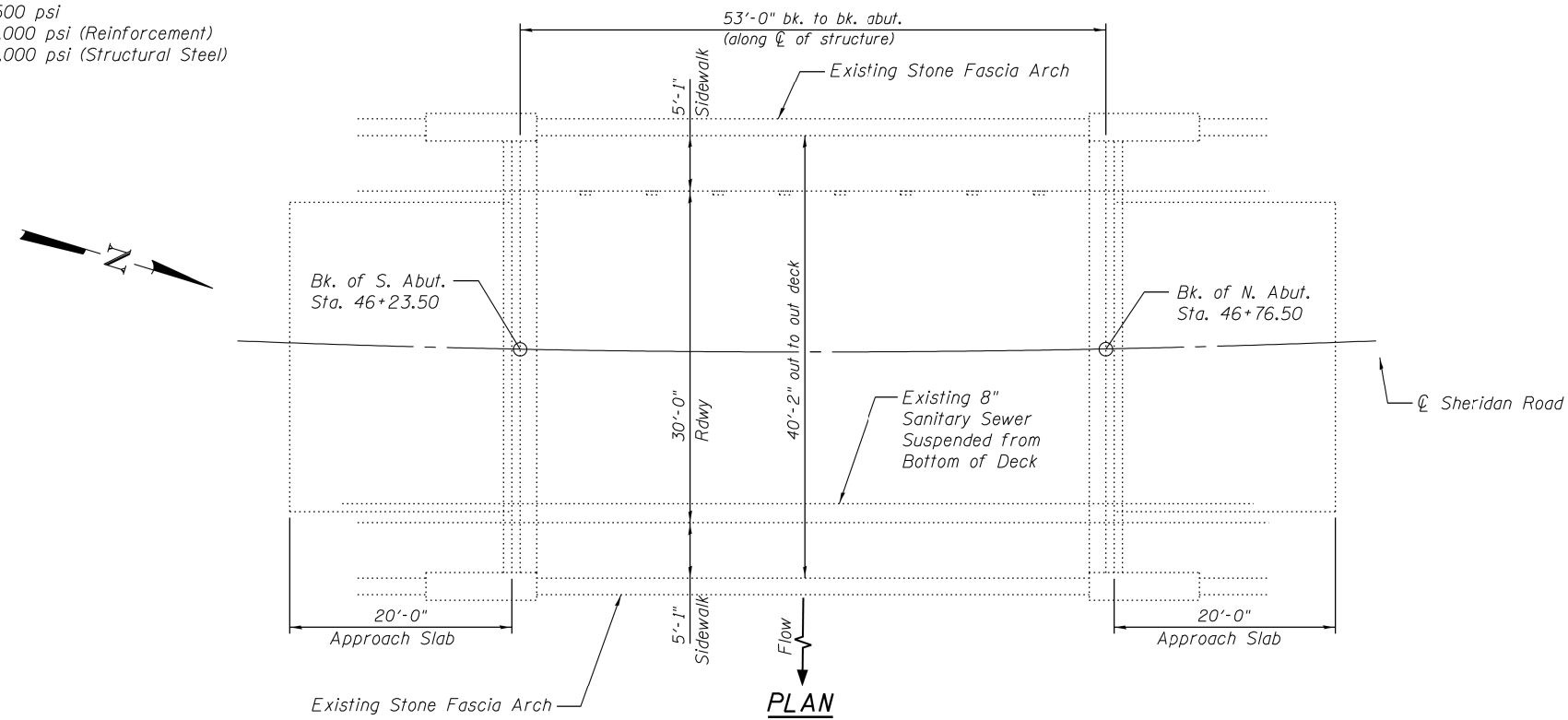


DESIGN STRESSES

(New Work)

$f'_c = 3,500$ psi
 $f_y = 60,000$ psi (Reinforcement)
 $f_y = 50,000$ psi (Structural Steel)

ELEVATION



MODEL: Default
 FILE: Model: ProjectRoom.dwg
 PROJECT: I:\Projects\101521\CAD\Drawings\DOT\Office\Drawings\101521-eh-eb-01.dwg

USER NAME = paraynoal	DESIGNED -	REVISED -
	DRAWN -	REVISED -
PLOT SCALE = 100.0000' / in.	CHECKED -	REVISED -
PLOT DATE = 8/21/2020	DATE -	REVISED -

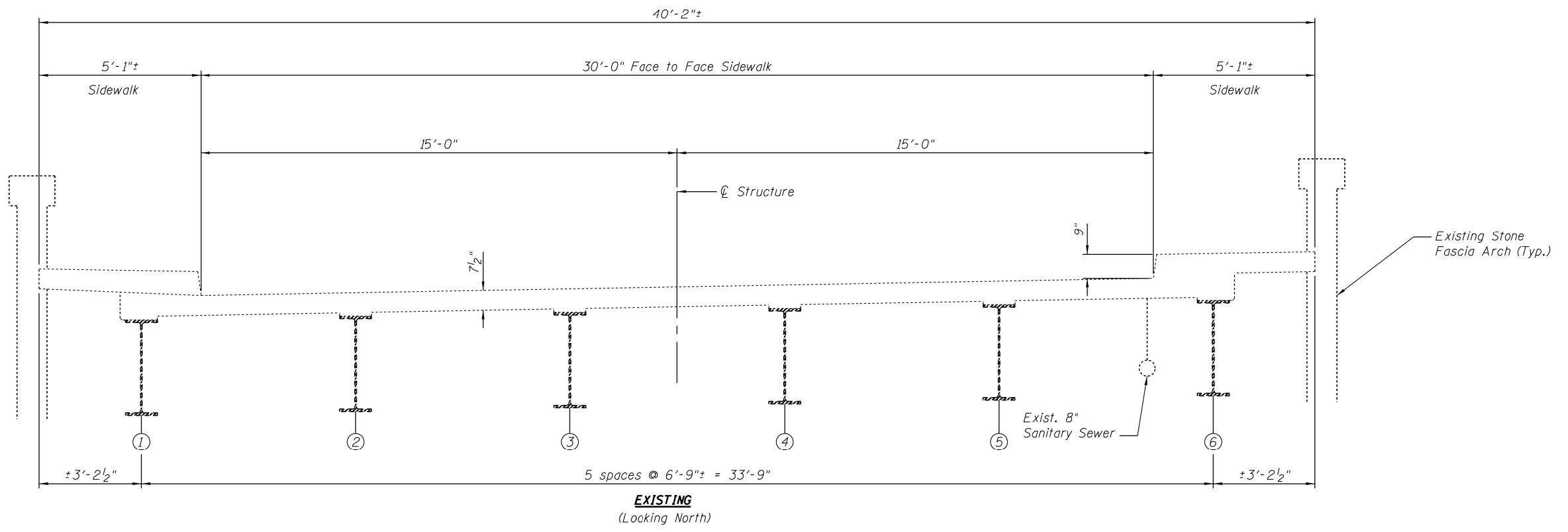
STATE OF ILLINOIS
 DEPARTMENT OF TRANSPORTATION

LOCATION 4: EXIST. BRIDGE: GENERAL PLAN AND ELEVATION
 LAKE-COOK ROAD OVER RAVINE (SN 016-0619)

SCALE: SHEET 1 OF 4 SHEETS STA. TO STA.

F.A.U. RTE.	SECTION	COUNTY	TOTAL SHEETS	SHEET NO.
3726 3509	2020-228-BP	COOK	25	19
CONTRACT NO. 62M88				
ILLINOIS FED. AID PROJECT				

FOR INFORMATION ONLY



MODEL: Default
 FILE: Model: 3726-3509-2020-228-BP-01521-CADData\Design\01521-24-16-20.dgn
 PROJECT: 01521-CADData\Design\01521-24-16-20.dwg
 OFFICE: District 1
 DATE: 8/21/2020

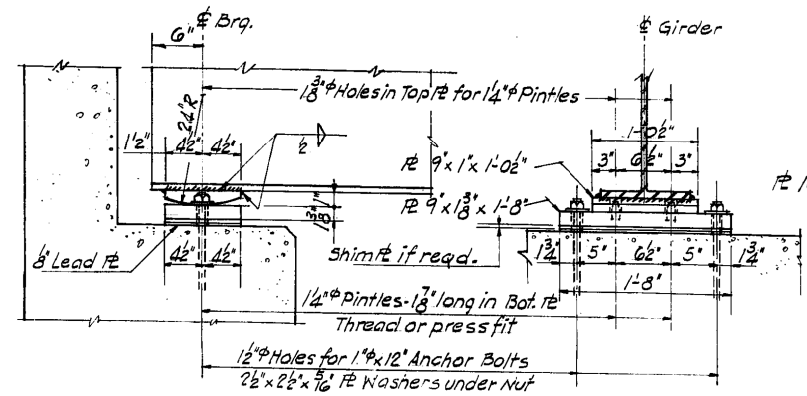
USER NAME = paraynoal	DESIGNED -	REVISED -
	DRAWN -	REVISED -
PLOT SCALE = 100.0000' / in.	CHECKED -	REVISED -
PLOT DATE = 8/21/2020	DATE -	REVISED -

**STATE OF ILLINOIS
DEPARTMENT OF TRANSPORTATION**

**LOCATION 4: EXISTING BRIDGE TYPICAL SECTION DETAIL
LAKE-COOK ROAD OVER RAVINE (SN 016-0619)**

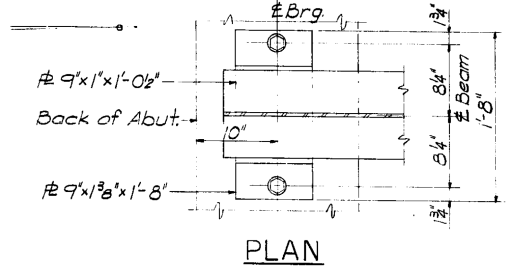
SCALE: SHEET 2 OF 4 SHEETS STA. TO STA.

F.A.U. RTE. 3726-3509	SECTION 2020-228-BP	COUNTY COOK	TOTAL SHEETS 25	SHEET NO. 20
CONTRACT NO. 62M88				
ILLINOIS FED. AID PROJECT				



ELEVATION

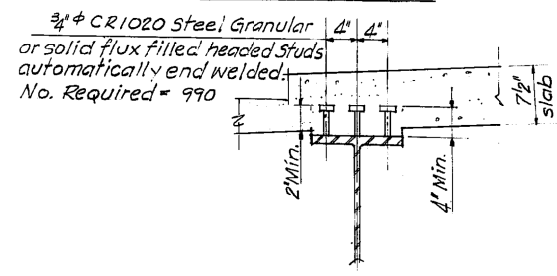
SECTION



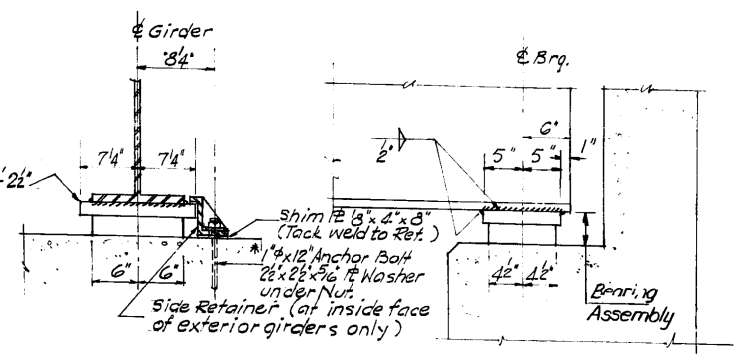
PLAN

* Note:
After beams have been erected holes at expansion bearings shall be drilled and anchor bolts grouted in place. Anchor bolts at fixed bearings may be built into the concrete.

FIXED BEARING (S. ABUTMENT)



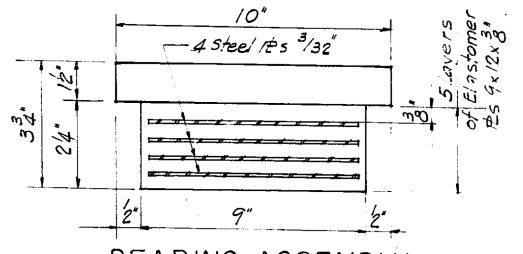
SECTION A-A



SECTION

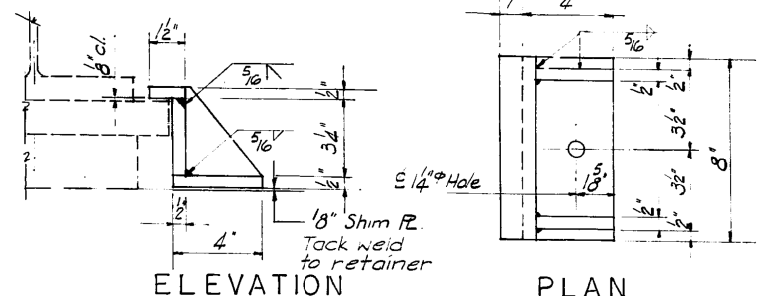
ELEVATION

TYPE I ELASTOMERIC EXP BRG. (N. ABUTMENT)



BEARING ASSEMBLY

PINTLE



ELEVATION

PLAN

SIDE RETAINER

FOR INFORMATION ONLY

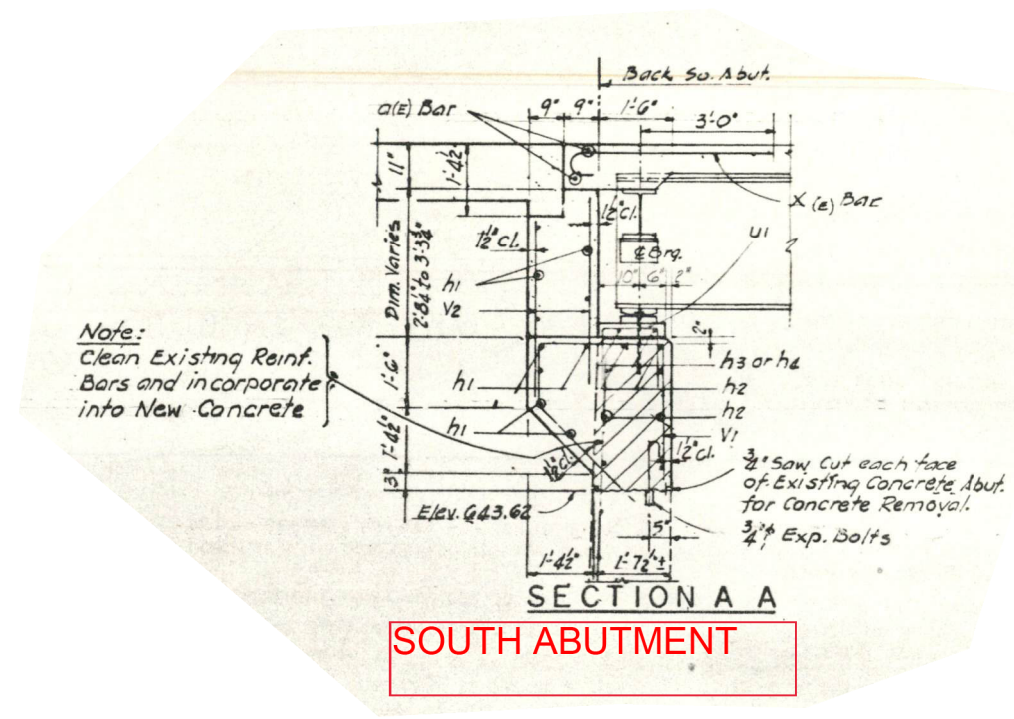
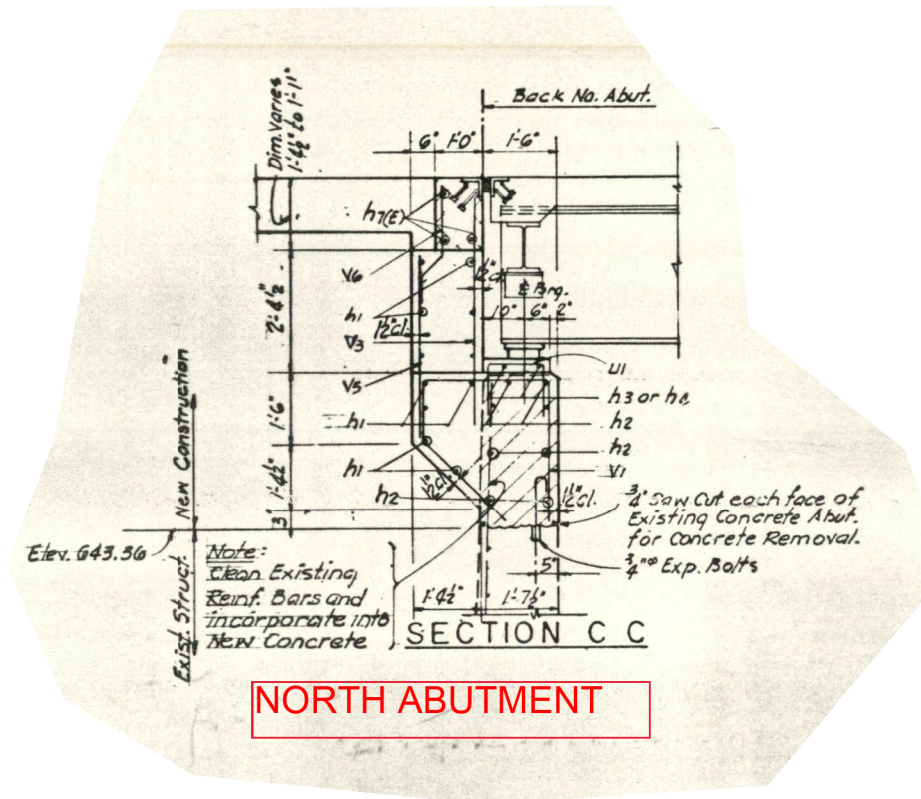
MODEL: Default
FILE: h:\m\c\p\pub\lanscom.dwg
PROJECT: 101521\LC\DD\Design\101521-sub-e-lan.dwg
PROJECT: 101521\LC\DD\Design\101521-sub-e-lan.dwg

USER NAME = paraynoal	DESIGNED -	REVISED -
PLOT SCALE = 100.0000' / in.	DRAWN -	REVISED -
PLOT DATE = 8/21/2020	CHECKED -	REVISED -
	DATE -	REVISED -

STATE OF ILLINOIS
DEPARTMENT OF TRANSPORTATION

LOCATION 4: EXIST. BRIDGE: BEARING DETAILS	
LAKE-COOK ROAD OVER RAVINE (SN 016-0619)	
SCALE:	SHEET 3 OF 4 SHEETS STA. TO STA.

F.A.U. RTE. 3726 3509	SECTION 2020-228-BP	COUNTY COOK	TOTAL SHEETS 25	SHEET NO. 21
CONTRACT NO. 62M88				
ILLINOIS FED. AID PROJECT				



FOR INFORMATION ONLY

MODEL: Default
 FILE: Model - 3726-3509.dwg
 USER: pparaymoal
 PROJECT: I:\Projects\011521\CAD\Drawings\011521-1.dwg

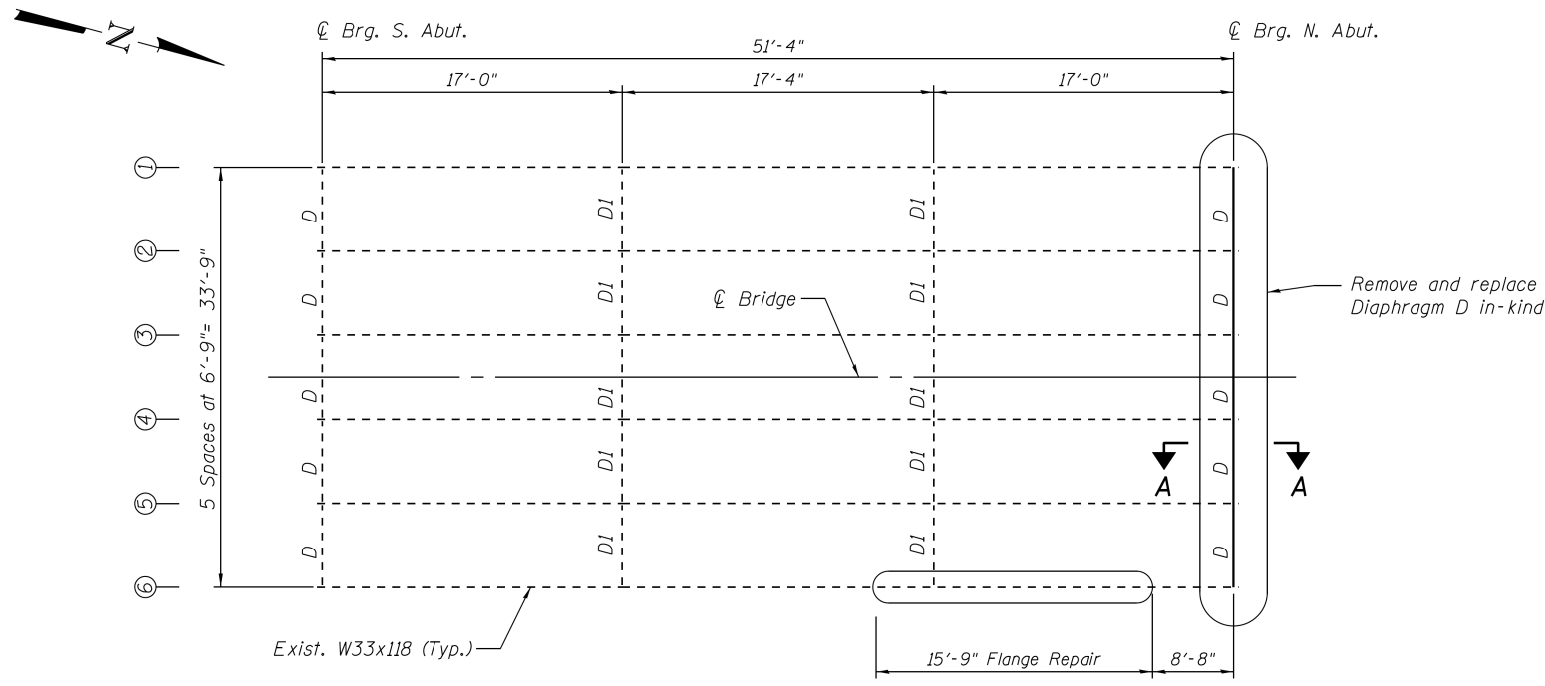
USER NAME = pparaymoal	DESIGNED -	REVISED -
	DRAWN -	REVISED -
PLOT SCALE = 100.0000' / in.	CHECKED -	REVISED -
PLOT DATE = 9/24/2020	DATE -	REVISED -

STATE OF ILLINOIS
DEPARTMENT OF TRANSPORTATION

LOCATION 4: EXIST. BRIDGE: ABUTMENT DETAILS
LAKE-COOK ROAD OVER RAVINE (SN 016-0619)

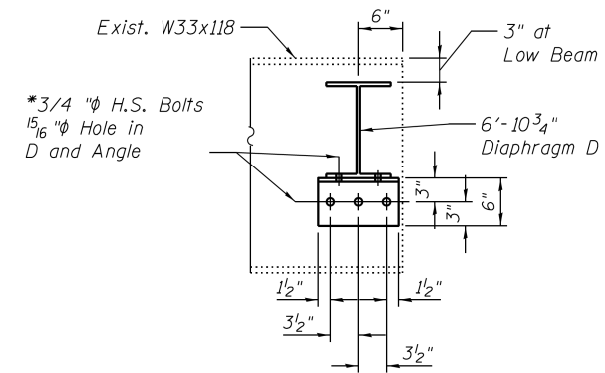
F.A.U. RTE. 3726 3509	SECTION 2020-228-BP	COUNTY COOK	TOTAL SHEETS 25	SHEET NO. 21A
CONTRACT NO. 62M88				
ILLINOIS FED. AID PROJECT				

SCALE: SHEET 3 OF 4 SHEETS STA. TO STA.

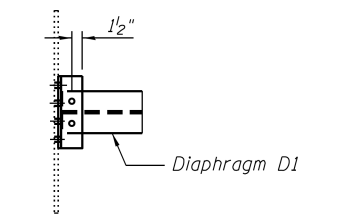


FRAMING PLAN

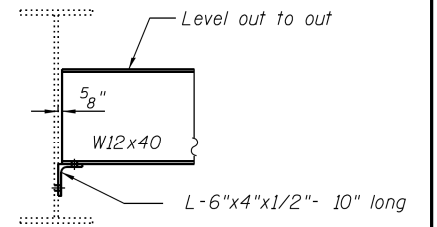
FOR INFORMATION ONLY



SECTION A-A



PLAN

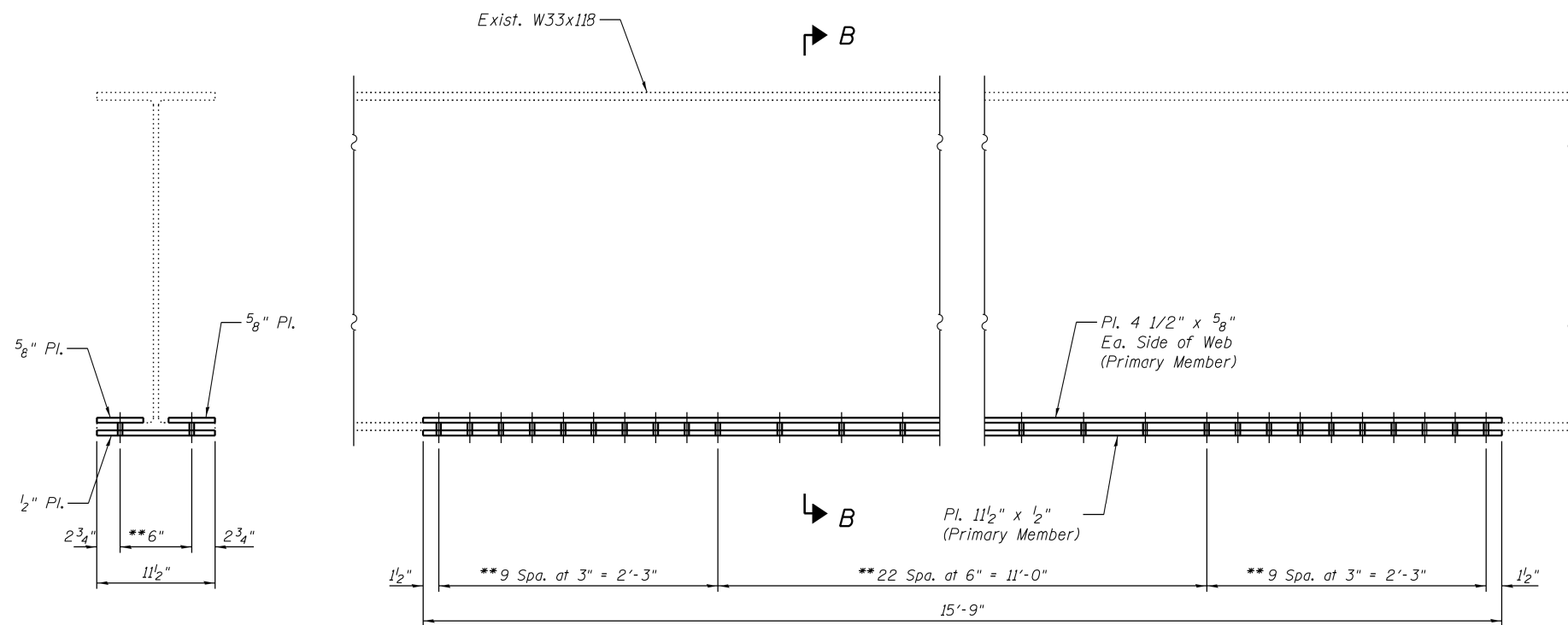


ELEVATION

* Note:
Field drill all holes. Location of bolt holes may be adjusted so that angle on opposite side share bolts.

END DIAPHRAGM D

Existing & Proposed
5 Required



SECTION B-B

BEAM FLANGE REPAIR DETAIL (BEAM 6)

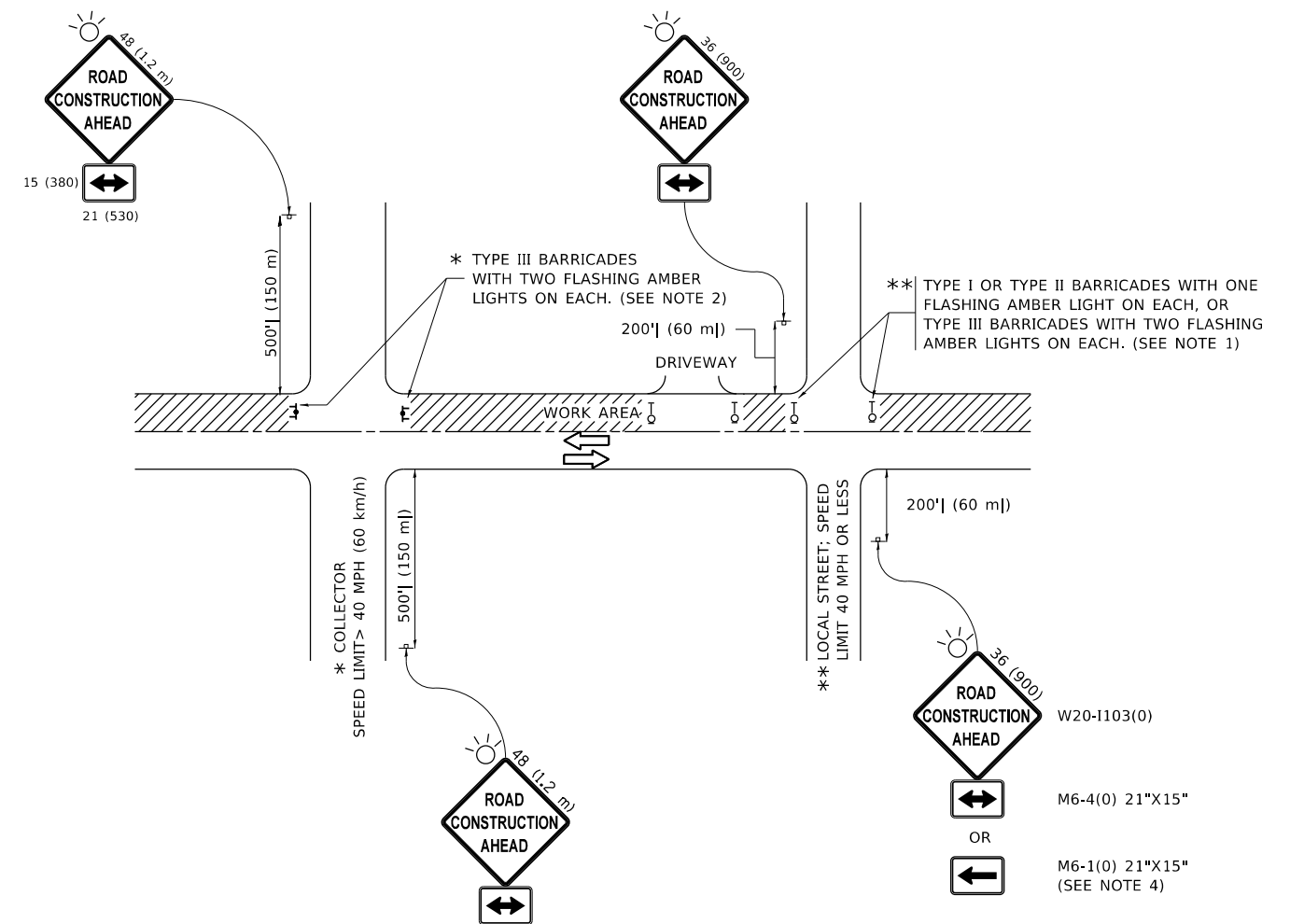
USER NAME = paraynoal	DESIGNED -	REVISED -
PLOT SCALE = 100.0000' / in.	DRAWN -	REVISED -
PLOT DATE = 8/21/2020	CHECKED -	REVISED -
	DATE -	REVISED -

STATE OF ILLINOIS
DEPARTMENT OF TRANSPORTATION

LOCATION 4: EXIST. BRIDGE: FRAMING PLAN AND STEEL REPAIRS DETAIL
LAKE-COOK ROAD OVER RAVINE (SN 016-0619)

SCALE: SHEET 4 OF 4 SHEETS STA. TO STA.

F.A.U. RTE. 3726-3509	SECTION 2020-228-BP	COUNTY COOK	TOTAL SHEETS 25	SHEET NO. 22
ILLINOIS FED. AID PROJECT			CONTRACT NO. 62M88	



NOTES:

1. SIDE ROAD WITH A SPEED LIMIT OF 40 MPH (60 km/h) OR LESS AS SHOWN ON THE DRAWING AND AS DIRECTED BY THE ENGINEER:
 - a) ONE "ROAD CONSTRUCTION AHEAD" SIGN 36 x 36 (900x900) WITH A FLASHER MOUNTED ON IT APPROXIMATELY 200' (60 m) IN ADVANCE OF THE MAIN ROUTE.
 - b) THE CLOSED PORTION OF THE MAIN ROUTE SHALL BE PROTECTED BY BLOCKING WITH TYPE I, TYPE II OR TYPE III BARRICADES, 1/3 OF THE CROSS SECTION OF THE CLOSED PORTION.
2. SIDE ROAD WITH A SPEED LIMIT GREATER THAN 40 MPH (60 km/h) AS SHOWN ON THE DRAWING AND AS DIRECTED BY THE ENGINEER:
 - a) ONE "ROAD CONSTRUCTION AHEAD" SIGN 48 x 48 (1.2 m x 1.2 m) WITH A FLASHER MOUNTED ON IT APPROXIMATELY 500' (150 m) IN ADVANCE OF THE MAIN ROUTE.
 - b) BLOCKING WITH TYPE III BARRICADES, 1/2 OF THE CROSS SECTION OF THE CLOSED PORTION.
3. CONES MAY BE SUBSTITUTED FOR BARRICADES OR DRUMS AT HALF THE SPACING DURING DAY OPERATIONS. CONES SHALL BE A MINIMUM OF 28 (710) IN HEIGHT.
4. SIGNING AND THE WORK ZONE, A SINGLE HEADED ARROW (M6-1) SHALL BE USED IN LIEU OF THE DOUBLE HEADED ARROW (M6-4).
5. WHEN WORK IS BEING PERFORMED ON A SIDE ROAD OR DRIVEWAY, FOLLOW THE APPLICABLE STANDARD(S). THE DIRECTIONAL ARROW (M6-1 OR M6-4) SHALL BE COVERED OR REMOVED WHEN NO LONGER CONSISTENT WITH THE TRAFFIC CONTROL SET-UP.
6. ADVANCE WARNING SIGNS ARE TO BE OMITTED ON DRIVEWAYS UNLESS OTHERWISE SPECIFIED IN THE PLANS OR BY THE ENGINEER.
7. THE TRAFFIC CONTROL AND PROTECTION FOR SIDE ROADS, INTERSECTIONS, AND DRIVEWAYS SHALL BE INCLUDED IN THE COST OF SPECIFIED TRAFFIC CONTROL STANDARDS OR ITEMS.

All dimensions are in inches (millimeters) unless otherwise shown.

MODEL: Default
 FILE: \\blm1c01.pw.us.ibm.com\data\illinois.gov\PW\DOT\Documents\DOT_Offices\Director_1\Projects\101521\CADD\Drawings\Design\DESIGN.dgn

USER NAME = paraynoal	DESIGNED - L.H.A.	REVISED - A. HOUSEH 10-15-96
PLOT SCALE = 100.0000' / in.	CHECKED -	REVISED - T. RAMMACHER 01-06-00
PLOT DATE = 8/21/2020	DATE - 06-89	REVISED - A. SCHUETZE 07-01-13
		REVISED - A. SCHUETZE 09-15-16

**STATE OF ILLINOIS
DEPARTMENT OF TRANSPORTATION**

**TRAFFIC CONTROL AND PROTECTION FOR
SIDE ROADS, INTERSECTIONS, AND DRIVEWAYS**

SCALE: NONE SHEET 1 OF 1 SHEETS STA. TO STA.

F.A.U. RTE.	SECTION	COUNTY	TOTAL SHEETS	SHEET NO.
3726 3509	2020-228-BP	COOK	25	23
TC-10			CONTRACT NO. 62M88	
ILLINOIS FED. AID PROJECT				

TURN BAY ENTRANCE AT START OF LANE CLOSURE TAPER

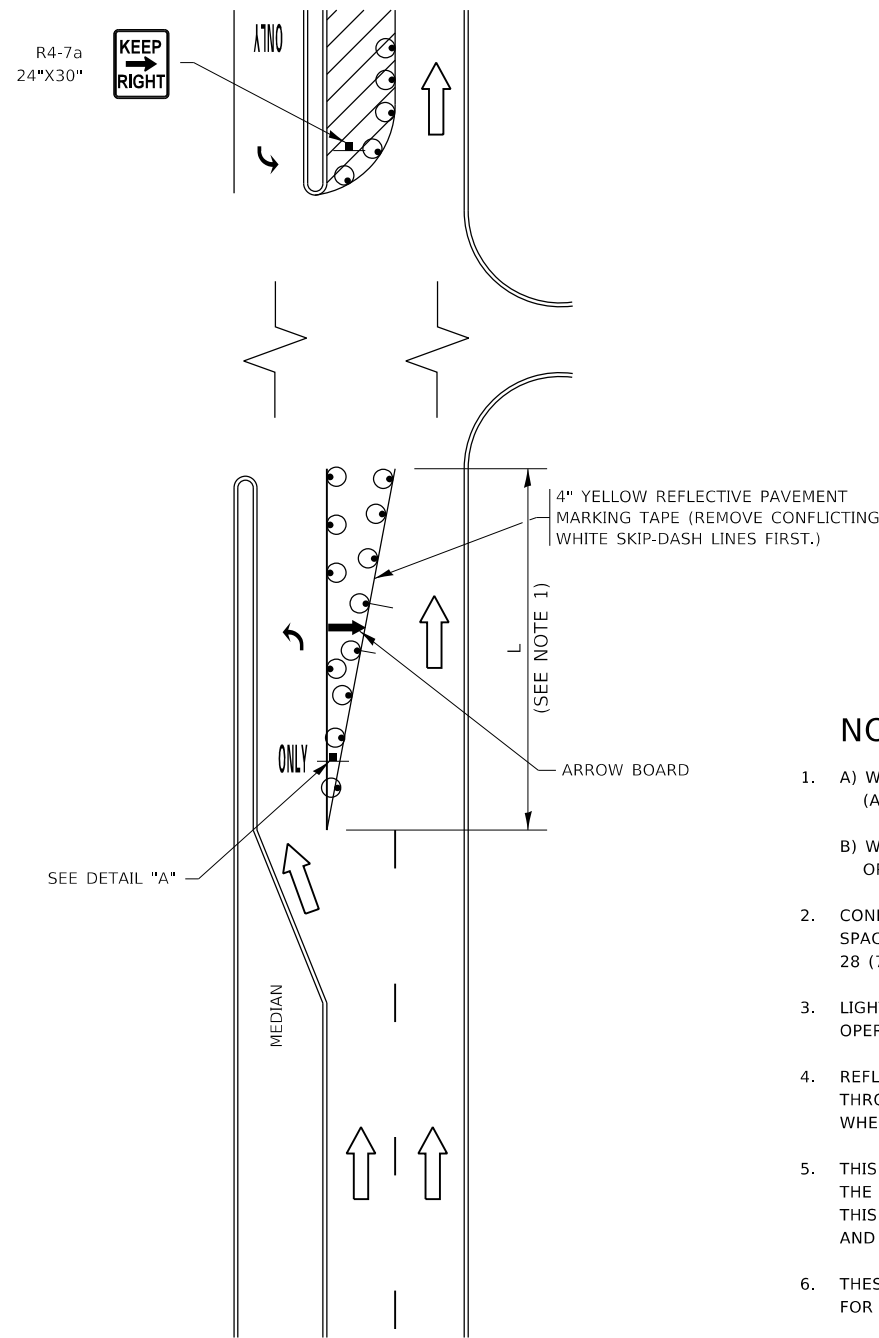


FIGURE 1

TURN BAY ENTRANCE WITHIN A LANE CLOSURE

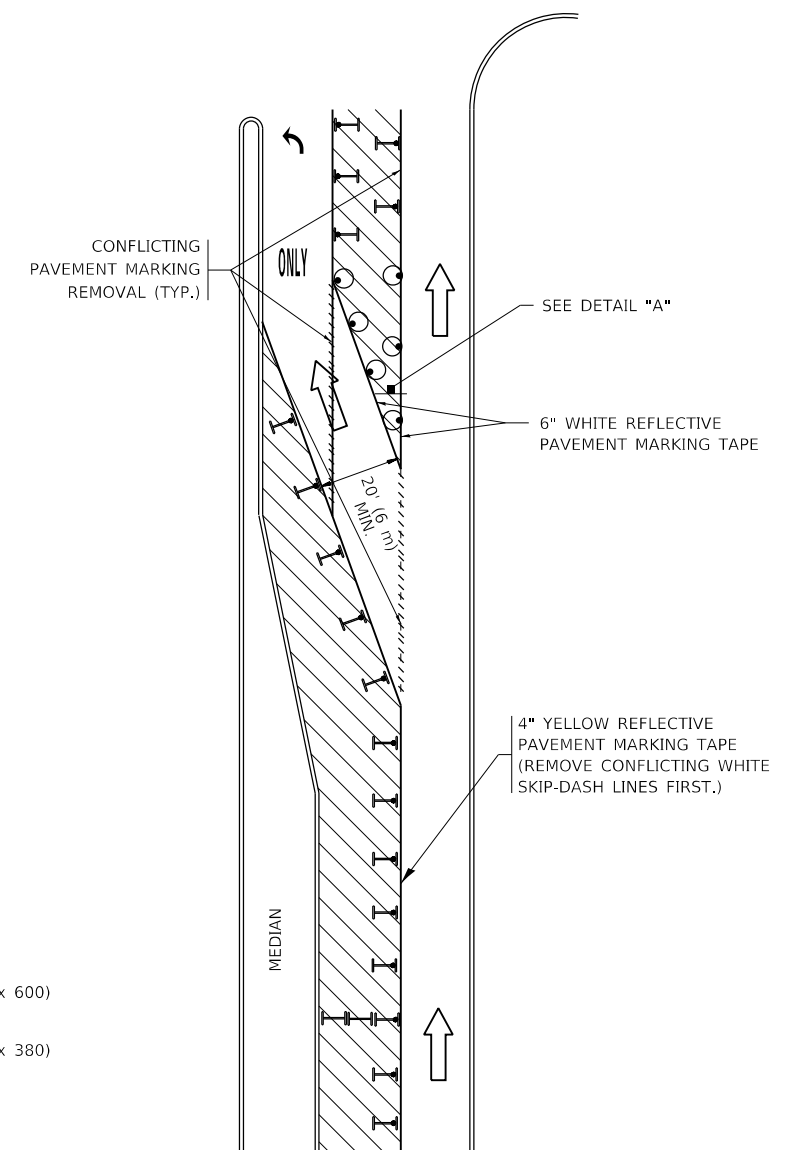


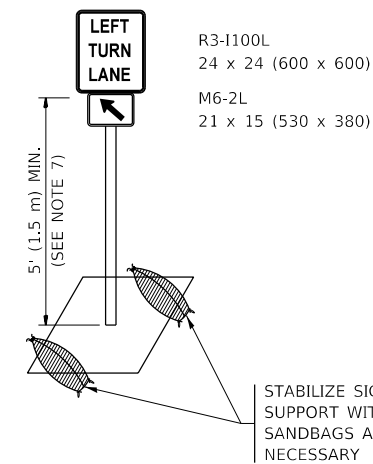
FIGURE 2

LEGEND

- WORK AREA
- LANE OPEN TO TRAFFIC
- ARROW BOARD
- TYPE I OR II BARRICADE OR DRUM WITH STEADY BURN LIGHT
- DRUM WITH STEADY BURN LIGHT
- SIGN ASSEMBLY
- TYPE I OR II CHECK BARRICADE WITH FLASHING LIGHT

NOTES:

1. A) WHEN "L" IS \leq THE STORAGE LENGTH OF THE TURN LANE (AS SHOWN IN FIG. 1), USE FIGURE 1.
B) WHEN "L" IS $>$ THE STORAGE LENGTH OF THE TURN LANE OR THE TURN LANE IS WITHIN THE LANE CLOSURE, USE FIGURE 2.
2. CONES MAY BE SUBSTITUTED FOR BARRICADES OR DRUMS AT HALF THE SPACING DURING DAY OPERATIONS. CONES SHALL BE A MINIMUM OF 28 (710) IN HEIGHT.
3. LIGHTS WILL NOT BE REQUIRED ON BARRICADES OR DRUMS FOR DAY OPERATIONS. ALL LIGHTS SHALL BE MONODIRECTIONAL.
4. REFLECTIVE TEMPORARY PAVEMENT MARKINGS SHALL BE PLACED THROUGHOUT THE BARRICADED AREAS OF EACH TURN BAY AS SHOWN WHERE THE CLOSURE TIME IS GREATER THAN FOURTEEN (14) DAYS.
5. THIS APPLICATION ALSO APPLIES WHEN WORK IS BEING PERFORMED IN THE RIGHT LANE(S) AND THE RIGHT TURN BAY IS TO REMAIN OPEN. UNDER THIS CONDITION, "RIGHT TURN LANE" R3-1100R 24 x 24 (600 x 600) AND M6-2R 21 x 15 (530 x 380) SHALL BE USED.
6. THESE CONTROLS SHALL SUPPLEMENT MAINLINE TRAFFIC CONTROL FOR LANE CLOSURES.
7. THE SIGNS SHALL BE MOUNTED ABOVE THE BARRICADES/DRUMS ON SEPARATE SIGN SUPPORTS THAT MEET NCHRP 350 OR MASH REQUIREMENTS.
8. TRAFFIC CONTROL AND PROTECTION AT TURN BAYS (TO REMAIN OPEN TO TRAFFIC) SHALL BE INCLUDED IN THE COST OF SPECIFIED TRAFFIC CONTROL STANDARDS OR ITEMS.



DETAIL A

All dimensions are in inches (millimeters) unless otherwise shown.

MODEL: Default
FILE: Model: ProjectRoom.dwg
PROJECT: 2020-228-BP
DRAWING: TC-14
DATE: 8/21/2020

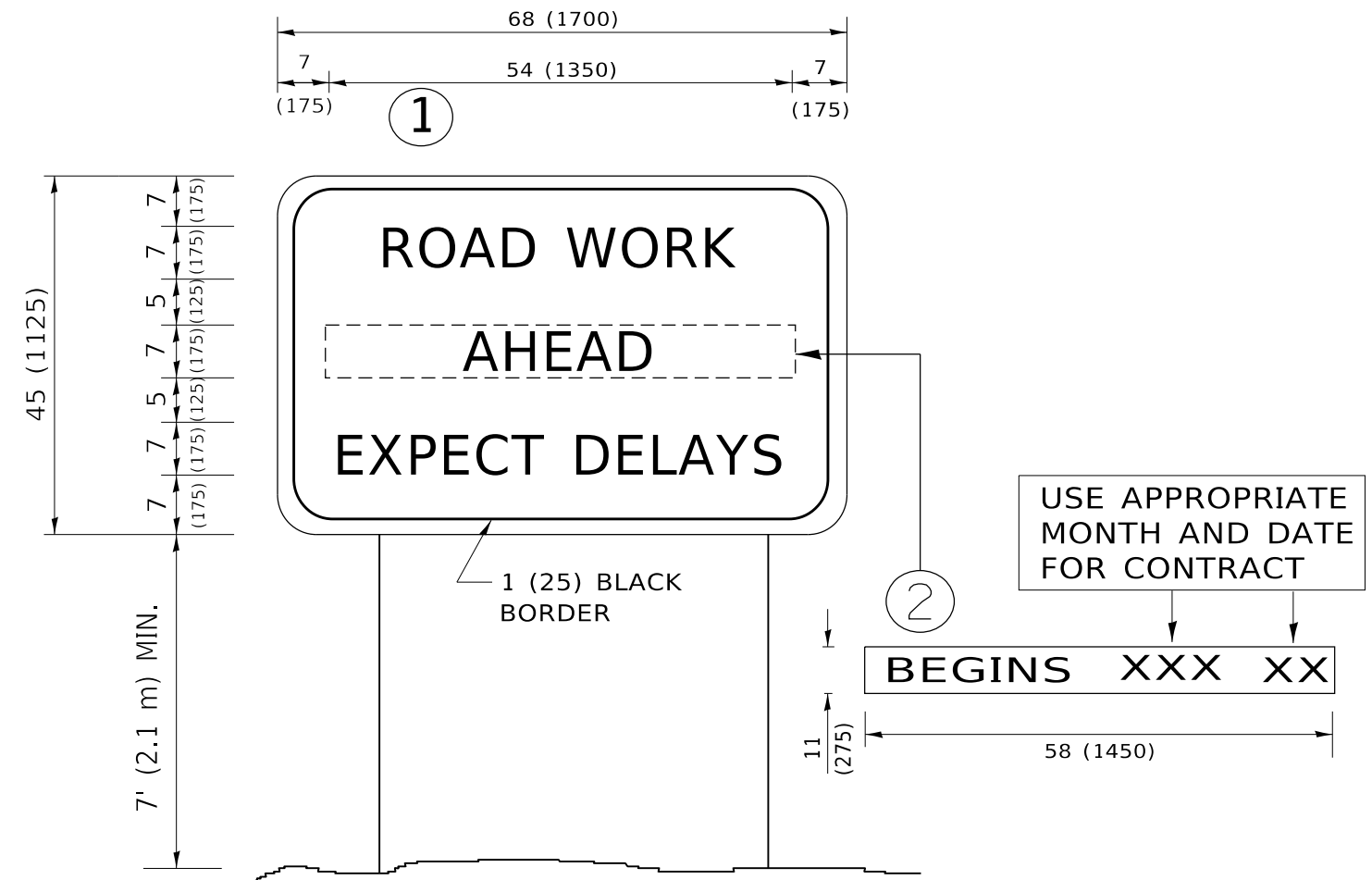
USER NAME = paraynoal	DESIGNED - T. RAMMACHER 09-08-94	REVISED - R. BORO 09-14-09
	DRAWN - A. HOUSEH 11-07-95	REVISED - A. SCHUETZE 07-01-13
PLOT SCALE = 100,0000' / in.	CHECKED - A. HOUSEH 10-12-96	REVISED - A. SCHUETZE 09-15-16
PLOT DATE = 8/21/2020	DATE - T. RAMMACHER 01-06-00	REVISED -

STATE OF ILLINOIS
DEPARTMENT OF TRANSPORTATION

TRAFFIC CONTROL AND PROTECTION AT TURN BAYS
(TO REMAIN OPEN TO TRAFFIC)

SCALE: NONE SHEET 1 OF 1 SHEETS STA. TO STA.

F.A.U. RTE.	SECTION	COUNTY	TOTAL SHEETS	SHEET NO.
	2020-228-BP	COOK	25	24
TC-14		CONTRACT NO. 62M88		
ILLINOIS FED. AID PROJECT				



NOTES:

1. USE BLACK LETTERING ON ORANGE BACKGROUND.
2. ERECT SIGNS IN ADVANCE OF THE LOCATION FOR THE "ROAD CONSTRUCTION AHEAD" SIGN AT LOCATIONS AS DIRECTED BY THE ENGINEER.
3. ERECT SIGN ① WITH INSTALLED PANEL ② ONE WEEK PRIOR TO THE START OF CONSTRUCTION.
4. REMOVE PANEL ② SOON AFTER THE START OF CONSTRUCTION.
5. SEE SPECIAL PROVISION FOR "TEMPORARY INFORMATION SIGNING" FOR ADDITIONAL INFORMATION.
6. ONE SIGN ASSEMBLY EQUALS 25.70 SQ. FT. (2.3 SQ. M.)
7. SHALL BE PAID FOR AS TEMPORARY INFORMATION SIGNING.

ALL DIMENSIONS ARE IN INCHES (MILLIMETERS) UNLESS OTHERWISE SHOWN.

MODEL: Default
 FILE: \\nashville.pva\pub\harcourt\mtda\illinois.gov\PWIDOT\Documents\DOT_Offices\Director_1\Projects\101521\CADD\Drawings\Design\DRS\4.dgn

USER NAME = paraynoal	DESIGNED -	REVISED - R. MIRS 09-15-97
	DRAWN -	REVISED - R. MIRS 12-11-97
PLOT SCALE = 100.0000 ' / in.	CHECKED -	REVISED - T. RAMMACHER 02-02-99
PLOT DATE = 8/21/2020	DATE -	REVISED - C. JUCIUS 01-31-07

**STATE OF ILLINOIS
DEPARTMENT OF TRANSPORTATION**

**ARTERIAL ROAD
INFORMATION SIGN**

SCALE: NONE SHEET 1 OF 1 SHEETS STA. TO STA.

F.A.U. RTE. 3726 3509	SECTION 2020-228-BP	COUNTY COOK	TOTAL SHEETS 25	SHEET NO. 25
TC-22		CONTRACT NO. 62M88		
ILLINOIS FED. AID PROJECT				