

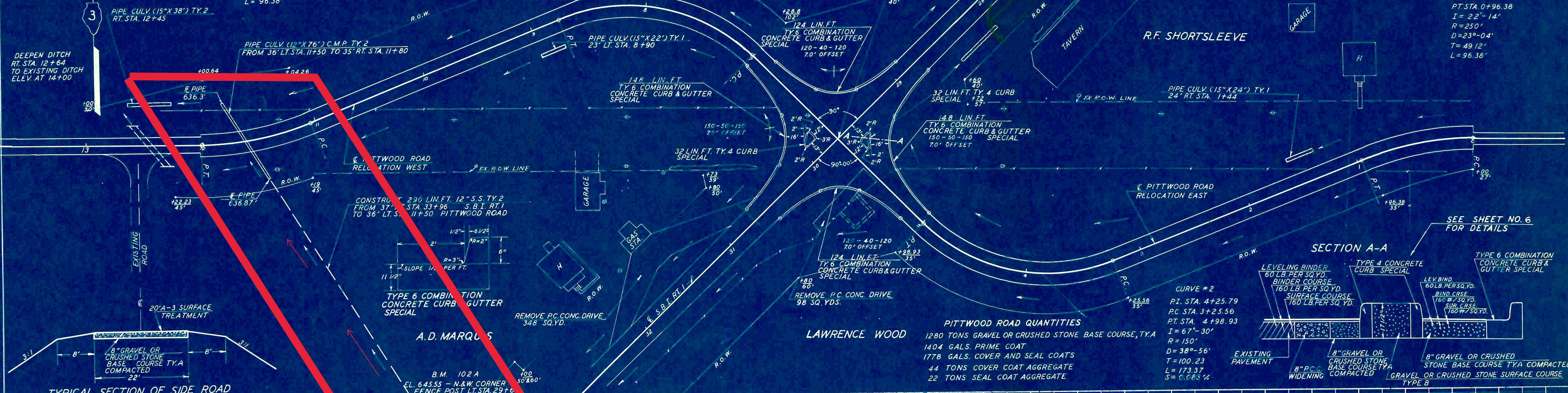
DETAIL OF PITTWOOD ROAD REALIGNMENT

SCALE 1"=40'

**CURVE #4**  
 P.I. STA. 11+53.38  
 P.C. STA. 11+04.26  
 P.T. STA. 12+00.64  
 I = 22°-14'  
 R = 250'  
 D = 23°-04'  
 T = 49.12'  
 L = 96.38'

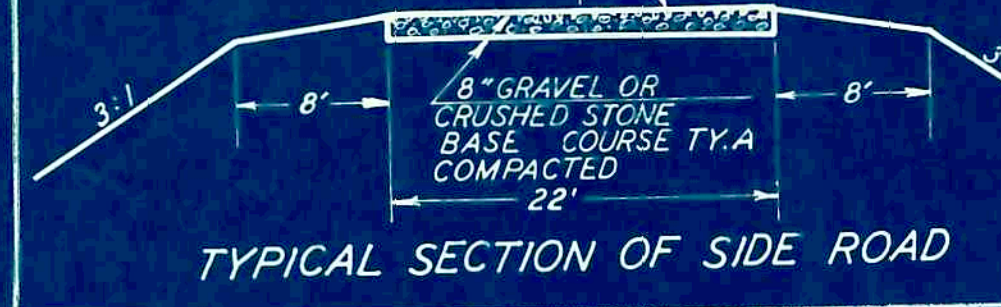
**CURVE #3**  
 P.I. STA. 8+01.94  
 P.C. STA. 7+01.71  
 P.T. STA. 8+75.08  
 I = 67°-30'  
 R = 150'  
 D = 38°-56'  
 T = 100.23'  
 L = 173.37'  
 S = 0.083 1/2%

**CURVE #1**  
 P.I. STA. 0+49.12  
 P.C. STA. 0+00  
 P.T. STA. 0+96.38  
 I = 22°-14'  
 R = 250'  
 D = 23°-04'  
 T = 49.12'  
 L = 96.38'



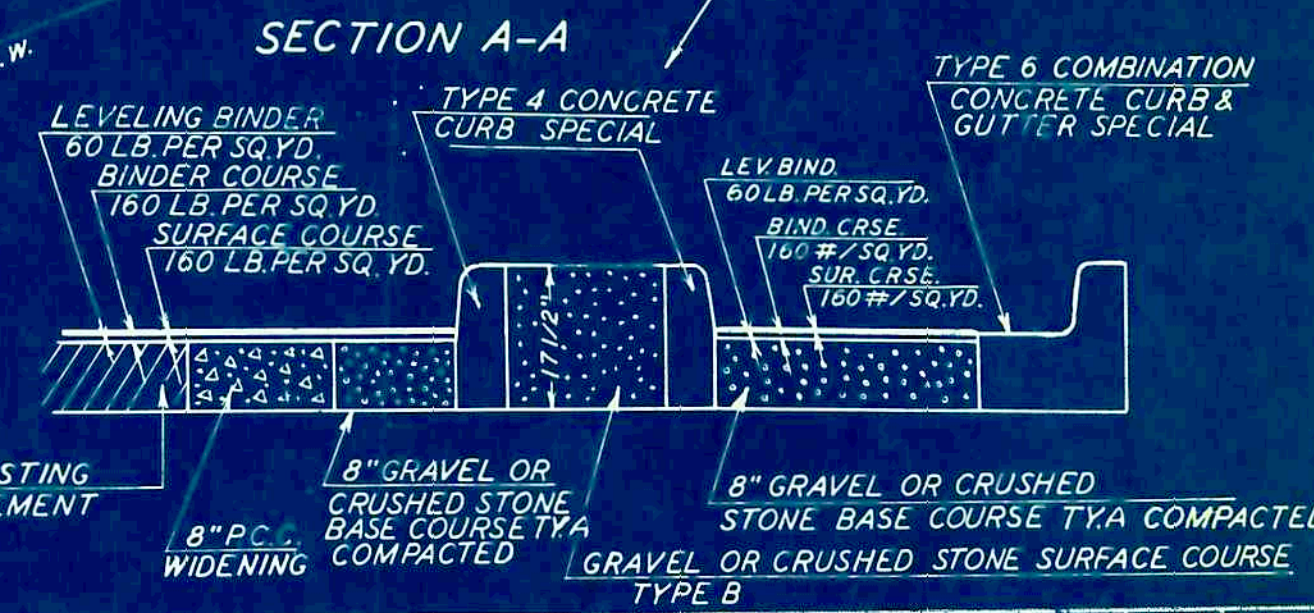
DATE	BY	DESCRIPTION

DATE	BY	DESCRIPTION



**PITTWOOD ROAD QUANTITIES**

1280 TONS GRAVEL OR CRUSHED STONE BASE COURSE, TY.A
1404 GALS. PRIME COAT
1778 GALS. COVER AND SEAL COATS
44 TONS COVER COAT AGGREGATE
22 TONS SEAL COAT AGGREGATE



CUT = 1349 CU.YDS.  
 FILL = 161 CU.YDS.  
 WASTE = 1146 CU.YDS.

CUT = 610 CU.YDS.  
 FILL = 318 CU.YDS.  
 WASTE = 203 CU.YDS.

