

STATE OF ILLINOIS
DEPARTMENT OF TRANSPORTATION

F.A.I.	SECTION	COUNTY	TOTAL SHEETS	SHEET NO.
64	95-(3,4,5)PP-1	WASHINGTON	10	1
		ILLINOIS	CONTRACT NO. 76N94	

D-98-123-20



FOR INDEX OF SHEETS, SEE SHEET NO. 2

TRAFFIC DATA

	CH 11 - IL 127	IL 127 - I-57
ADT (CONSTRUCTION YR - 2020):	29600	28100
MU%	26.7	28.1
SU%	2.8	2.9

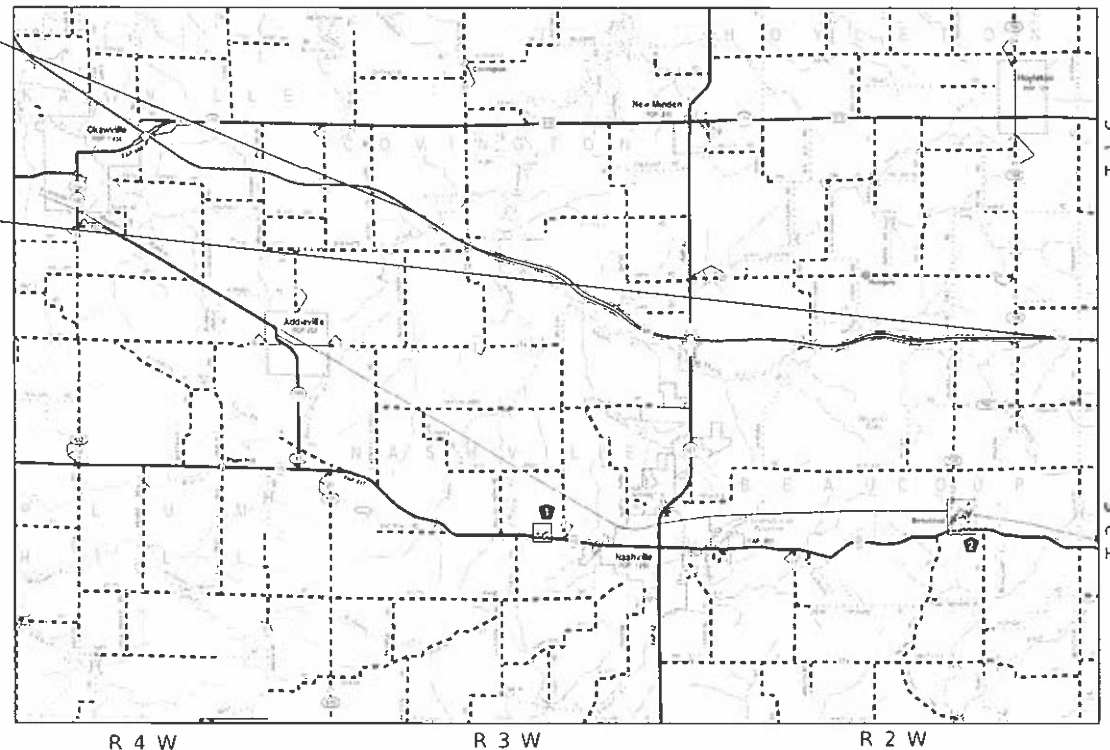
PROPOSED HIGHWAY PLANS

FAI 64 (I-64)
SECTION 95-(3,4,5)PP-1
PATCHING - CM
WASHINGTON COUNTY

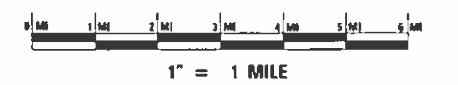
C-98-133-20

BEGIN PROJECT
0.5 MI W. OF BEAVER POND CREEK
0.0 M.S.
LATITUDE: 38.4223863
LONGITUDE: -89.4533337

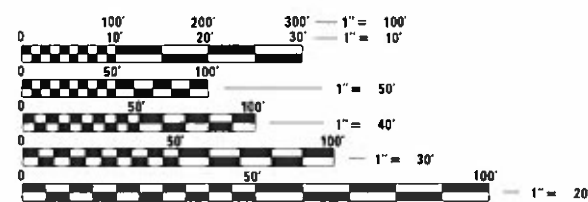
END PROJECT
1.4 MI. E. of CH 11
11.59 M.S.
LATITUDE: 38.3916425
LONGITUDE: -89.2496789



LOCATION MAP



GROSS LENGTH = 61,195.20 FT. = 11.59 MILE
NET LENGTH = 61,195.20 FT. = 11.59 MILE



FULL SIZE PLANS HAVE BEEN PREPARED USING STANDARD ENGINEERING SCALES. REDUCED SIZED PLANS WILL NOT CONFORM TO STANDARD SCALES. IN MAKING MEASUREMENTS ON REDUCED PLANS, THE ABOVE SCALES MAY BE USED.

J.U.L.I.E.
JOINT UTILITY LOCATION INFORMATION FOR EXCAVATION
1-800-892-0123
OR 811

PROJECT ENGINEER: TIFFANY BRASE (618)346-3325
PROJECT MANAGER: DIANA MURRAY (618)346-3207

CONTRACT NO. 76N94

STATE OF ILLINOIS
DEPARTMENT OF TRANSPORTATION

SUBMITTED Aug. 11 2020
Keith Roberts
REGIONAL ENGINEER

October 2, 2020
Scott A. Elk
ENGINEER OF DESIGN AND ENVIRONMENT

October 2, 2020
James J. Gu
DIRECTOR OF HIGHWAYS PROJECT IMPLEMENTATION 13

PRINTED BY THE AUTHORITY
OF THE STATE OF ILLINOIS

INDEX OF SHEETS

1	COVER SHEET
2	INDEX OF SHEETS, HIGHWAY STANDARDS, GENERAL NOTES & COMMITMENTS
3	SUMMARY OF QUANTITIES
4	LOCATION MAP
5	TYPICAL SECTIONS
6-9	SCHEDULE OF QUANTITIES
10	TIE POINTS

HIGHWAY STANDARDS

000001-07	STANDARD SYMBOLS, ABBREVIATIONS AND PATTERNS
001006	DECIMAL OF AN INCH AND OF A FOOT
442001-04	CLASS A PATCHES
701101-05	OFF-RD OPERATIONS, MULTILANE, 15' (4.5m) TO 24"(600mm) FROM PAVEMENT EDGE
701106-02	OFF-RD OPERATIONS, MULTILANE, MORE THAN 15' (4.5m) AWAY
701400-09	APPROACH TO LANE CLOSURE, FREEWAY/EXPRESSWAY
701401-12	LANE CLOSURE, FREEWAY/EXPRESSWAY
701406-12	LANE CLOSURE, FREEWAY/EXPRESSWAY, DAY OPERATIONS ONLY
701411-09	LANE CLOSURE, MULTILANE, AT ENTRANCE OR EXIT RAMP FOR SPEEDS ≥ 45MPH
701426-09	LANE CLOSURE, MULTILANE, INTERMITTENT OR MOVING OPER., FOR SPEEDS ≥ 45MPH
701428-01	TRAFFIC CONTROL SETUP AND REMOVAL FREEWAY/EXPRESSWAY
701901-08	TRAFFIC CONTROL DEVICES
780001-05	TYPICAL PAVEMENT MARKINGS
781001-04	TYPICAL APPLICATION RAISED REFLECTIVE PAVEMENT MARKERS

GENERAL NOTES

1. UTILITIES KNOWN TO HAVE FACILITIES WITHIN THE PROJECT AREA ARE AS FOLLOWS:

UTILITY	ABOVE GROUND	BELOW GROUND
*AT & T CORPORATION (COMMUNICATIONS)	X	X
*CLEARWAVE COMMUNICATIONS (COMMUNICATIONS)	X	X
*COUNTYMARK COOPERATIVE, LLP (PIPELINE)		X
*FRONTIER COMMUNICATIONS (COMMUNICATIONS)	X	X
*VILLAGE OF HOYLETON (WATER & SANITARY SEWER)		X
*NATURAL GAS PIPELINE COMPANY OF AMERICA (PIPELINE)		X
*TRI-COUNTY ELECTRIC COOPERATIVE, INC. (ELECTRIC TRANSMISSION)	X	X
*WASHINGTON COUNTY WATER CO. (WATER)		X

MEMBERS OF J.U.L.I.E. (800-892-0123 OR 811) ARE INDICATED BY AN *. NON-JULIE MEMBERS MUST BE NOTIFIED INDIVIDUALLY.

2. THE CONTRACTOR AND THE ENGINEER SHALL BE AWARE THAT NO SURVEY WAS PERFORMED FOR THIS PROJECT, THE STATIONING, TOPOGRAPHY AND QUANTITIES SHOWN ON THESE PLANS WERE CREATED USING MICROFILM AND FIELD MEASUREMENTS. ALL SHALL BE ASSUMED TO BE APPROXIMATE. THE CONTRACTOR SHALL VERIFY DIMENSIONS AND CONDITIONS IN THE FIELD PRIOR TO CONSTRUCTION AND ORDERING OF MATERIALS.
3. HIGH EARLY STRENGTH CONCRETE FOR PAVEMENT PATCHING WILL BE ALLOWED.
4. ALL PATCHES 100 FT. LONG OR MORE SHALL INCLUDE PROPOSED PAINT PAVEMENT MARKING, 4" - WHITE AT THE EDGELINE AND CENTERLINE. PAINT PAVEMENT MARKING SHALL BE PAID FOR SEPARATELY AND IS NOT INCLUDED AS A PART OF THE PATCH. THE PLAN QUANTITY IS ESTIMATED TO BE 5490 FT.
5. AN ESTIMATED QUANTITY OF 35 EACH OF RRPMS HAS BEEN INCLUDED IN THE PLANS BASED ON PATCHES 100 FT. LONG OR MORE.
6. THE 4" DEPTH OF THE PARTIAL DEPTH PATCHING SHALL BE CONSTRUCTED IN ONE 2-1/2" LIFT OF BINDER AND ONE 1-1/2" LIFT OF POLY SURFACE.
7. 3-POINT TIES FOR SECTION CORNERS ARE FOUND IN THE GRASS MEDIAN AND INCLUDED IN THE PLANS. ALL TIE POINTS SHALL BE PRESERVED DURING CONSTRUCTION OR PATCHING OPERATIONS.

MIXTURE REQUIREMENTS

ROUTE	FAI 64 (I-64)
SECTION	95-(3,4,5)PP-1
COUNTY	WASHINGTON
CONTRACT	76N94

DESCRIPTION:	PATCHING - CM - I-64 FROM 0.5 MI W OF BEAVER POND CREEK TO 1.4 MI E OF CH 11.
--------------	---

ADT (CONSTRUCTION YR):	29600
MU %	26.7
SU%	2.8
20 YR. ESAL'S:	47.48

MIXTURE USE	PARTIAL DEPTH PATCHING	
	POLY SURFACE	BINDER
AC/PG	SBS PG 76-22	SBS PG 64-22
DESIGN AIR VOIDS	SEE SPECIAL PROVISION	SEE SPECIAL PROVISION
RAP% (MAX)	4.0% @ Ndes=90	4.0% @ Ndes=90
MIX COMPOSITION	IL 9.5	IL 19.0
(GRADATION MIXTURE)	MIXTURE "E"	MIXTURE "B"
FRICTION AGG	QC/QA	QC/QA

Plan quantities for HMA items are calculated using a unit weight of 112 lb/sq yd/in (59.8 kg/sq m/25 mm thickness).

COMMITMENTS

NONE

REV. - MS

STATE OF ILLINOIS
DEPARTMENT OF TRANSPORTATION

INDEX OF SHEETS, HIGHWAY STANDARDS
GENERAL NOTES & COMMITMENTS

F.A.I.	SECTION	COUNTY	TOTAL SHEETS	SHEET NO.
64	95-(3,4,5)PP-1	WASHINGTON	10	2
CONTRACT NO. 76N94				
ILLINOIS FED. AID PROJECT				

SCALE: SHEET 1 OF 1 SHEETS STA. TO STA.

CODE NO.	ITEM	UNIT	TOTAL QUANTITY	100% STATE	
				CONSTR. CODE	
				ROADWAY 0006	RURAL
44200577	CLASS A PATCHES, TYPE II, 12 INCH	SQ YD	369	369	
44200581	CLASS A PATCHES, TYPE III, 12 INCH	SQ YD	228	228	
44200583	CLASS A PATCHES, TYPE IV, 12 INCH	SQ YD	652	652	
44213000	PATCHING REINFORCEMENT	SQ YD	1249	1249	
44213200	SAW CUTS	FOOT	5120	5120	
44213204	TIE BARS 3/4"	EACH	238	238	
67100100	MOBILIZATION	L SUM	1	1	
70100420	TRAFFIC CONTROL AND PROTECTION, STANDARD 701411	EACH	4	4	
70100700	TRAFFIC CONTROL AND PROTECTION, STANDARD 701406	L SUM	1	1	
70100800	TRAFFIC CONTROL AND PROTECTION, STANDARD 701401	L SUM	1	1	
70200100	NIGHTTIME WORK ZONE LIGHTING	L SUM	1	1	
* 78001110	PAINT PAVEMENT MARKING - LINE 4"	FOOT	5490	5490	
* 78100100	RAISED REFLECTIVE PAVEMENT MARKER	EACH	35	35	
X4406240	PARTIAL DEPTH REMOVAL, TYPE II, 4"	SQ YD	510	510	

* SPECIALTY ITEM

Ø 0042

CODE NO.	ITEM	UNIT	TOTAL QUANTITY	100% STATE	
				CONSTR. CODE	
				ROADWAY 0006	RURAL
X4406440	PARTIAL DEPTH REMOVAL, TYPE III, 4"	SQ YD	1076	1076	
X4406640	PARTIAL DEPTH REMOVAL, TYPE IV, 4"	SQ YD	1336	1336	
X4421000	PARTIAL DEPTH PATCHING	TON	653.8	653.8	
Ø Z0076604	TRAINEES TRAINING PROGRAM GRADUATE	HOOR	1000	1000	

MODEL: Default
 FILE: Model_Planplanroom.dwg
 PROJECT: I:\Projects\DOT\Office\DOT\Documents\DOT\Office\DOT\Projects\DOT\76N94\DOT\76N94-Plan.dgn

**STATE OF ILLINOIS
DEPARTMENT OF TRANSPORTATION**

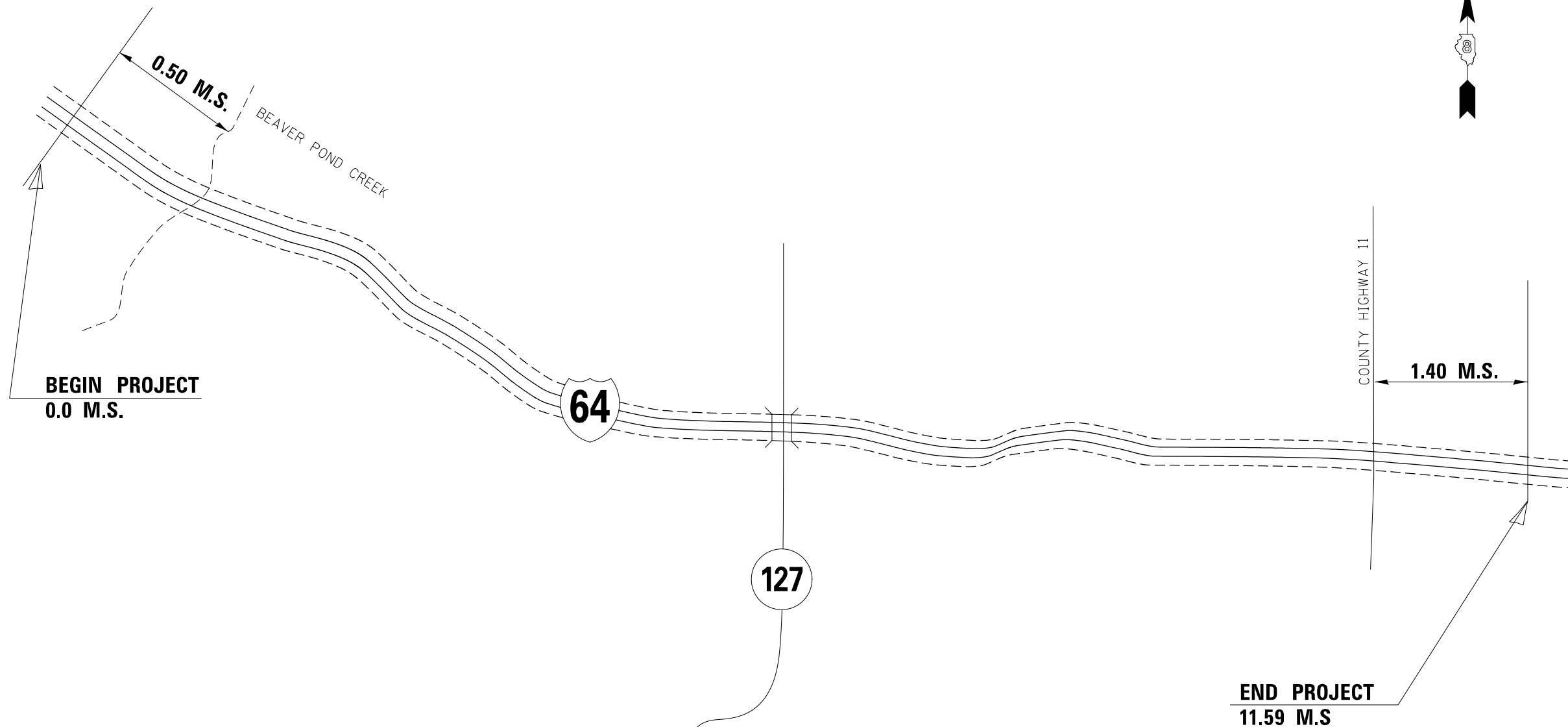
SUMMARY OF QUANTITIES

F.A.I.	SECTION	COUNTY	TOTAL SHEETS	SHEET NO.
64	95-(3,4,5)PP-1	WASHINGTON	10	3
CONTRACT NO. 76N94				

SCALE: SHEET 1 OF 1 SHEETS STA. TO STA.

ILLINOIS FED. AID PROJECT

REV. - MS



NOT TO SCALE

MODEL: Default
 FILE: \\nrc\c:\p\planner\room\dat\illinois.gov\PWIDOT\Documents\DOT_Offices\District 8\Projects\ID76N94\CADD\ataCAD\pieces\ID76N94-shc-plan.dgn

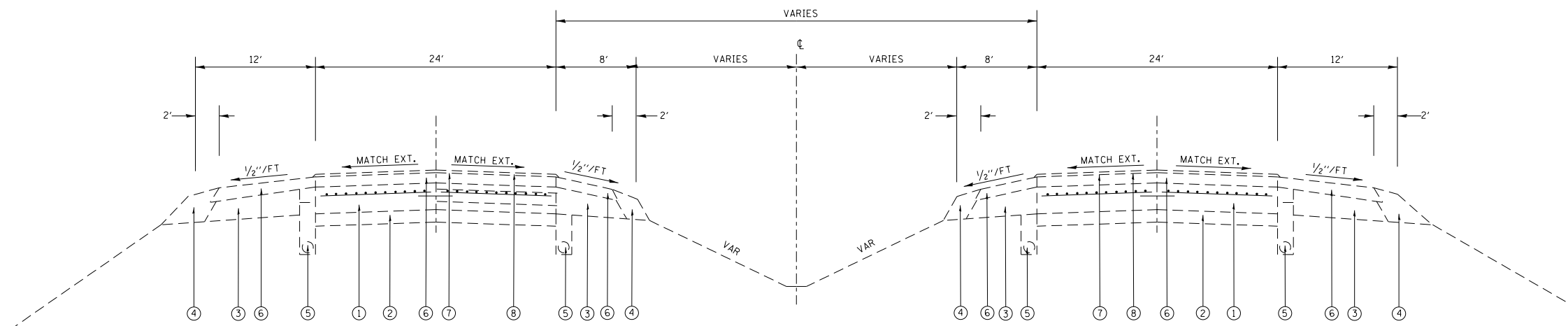
USER NAME = murrayda	DESIGNED -	REVISED -
	DRAWN -	REVISED -
PLOT SCALE = 2,000' / in.	CHECKED -	REVISED -
PLOT DATE = 8/10/2020	DATE -	REVISED -

**STATE OF ILLINOIS
DEPARTMENT OF TRANSPORTATION**

LOCATION MAP

SCALE: SHEET 1 OF 1 SHEETS STA. TO STA.

F.A.I.	SECTION	COUNTY	TOTAL SHEETS	SHEET NO.
64	95-(3,4,5)PP-1	WASHINGTON	10	4
CONTRACT NO. 76N94				
ILLINOIS FED. AID PROJECT				



EXISTING TYPICAL SECTION
 FAI ROUTE 64
 0.00 M.S. TO 11.59 M.S.

LEGEND

- ① EXISTING CRPCC PAVEMENT, 8"
- ② EXISTING STABILIZED SUB-BASE, 4"
- ③ EXISTING STABILIZED SHOULDER, 8"
- ④ EXISTING AGGREGATE SHOULDER
- ⑤ EXISTING PIPE UNDERDRAINS, 4"
- ⑥ EXISTING HOT-MIX ASPHALT OVERLAY - 3 1/4"
- ⑦ EXISTING BITUMINOUS MATERIALS (PRIME COAT)
- ⑧ EXISTING MICRO-SURFACING, 2 PASSES

MODEL: Default
 FILE: \\nrcs-pis\uplanroom\data\illinois.gov\PWIDOT\Documents\DOT_Offices\District 8\Projects\076994\CADD\076994-01-01-01.dgn

USER NAME = murrayda	DESIGNED -	REVISED -
	DRAWN -	REVISED -
PLOT SCALE = 2,000' / in.	CHECKED -	REVISED -
PLOT DATE = 8/10/2020	DATE -	REVISED -

**STATE OF ILLINOIS
 DEPARTMENT OF TRANSPORTATION**

TYPICAL SECTIONS

SCALE: SHEET 1 OF 1 SHEETS STA. TO STA.

F.A.I.	SECTION	COUNTY	TOTAL SHEETS	SHEET NO.
64	95-(3,4,5)PP-1	WASHINGTON	10	5
CONTRACT NO. 76N94				
ILLINOIS FED. AID PROJECT				

MODEL: Default
 FILE: \\nls1c-pix\pub\room.dta\illinois.gov\PWIDOT\Documents\DOT_Offices\District 8\Projects\0776994\CADD\0776994-4-shc-plan.dgn

FULL DEPTH PATCHING SCHEDULE										
MILE STATION	EB / WB	DL / PL	DIMENSIONS		SAW CUTS FOOT	TIE BARS 3/4" EACH	PATCHING REINFORCEMENT SQ YD	CLASS A PATCHES, 12 INCH		
			LENGTH	WIDTH				TYPE II SQ YD	TYPE III SQ YD	TYPE IV SQ YD
0.9	EB	DL	15	6	54		10	10		
1.1	EB	DL	15	12	78		20		20	
1.2	EB	DL	20	6	64		14	14		
1.2	EB	DL	15	6	54		10	10		
1.6	EB	DL	6	12	60		8	8		
1.6	EB	DL	6	12	60		8	8		
1.6	EB	PL	6	12	60		8	8		
5.0	EB	DL	30	12	108	15	40			40
6.7	EB	DL	10	12	68		14	14		
6.7	EB	DL	6	12	60		8	8		
6.8	EB	DL	6	12	60		8	8		
6.8	EB	DL	6	12	60		8	8		
6.9	EB	DL	20	12	88		27			27
6.9	EB	DL	6	12	60		8	8		
6.9	EB	PL	6	12	60		8	8		
7.0	EB	DL	15	12	78		20		20	
7.0	EB	DL	10	12	68		14	14		
7.0	EB	DL	15	12	78		20		20	
7.0	EB	DL	6	12	60		8	8		
7.0	EB	DL	15	12	78		20		20	
7.0	EB	DL	12	12	72		16		16	
7.0	EB	DL	6	12	60		8	8		
7.1	EB	DL	6	12	60		8	8		
7.1	EB	DL	40	12	128	20	54			54
7.6	EB	DL	60	6	144	30	40			40
7.8	EB	DL	6	12	60		8	8		
7.8	EB	DL	15	6	54		10	10		
8.0	EB	DL	6	12	60		8	8		
8.0	EB	DL	15	12	78		20		20	
8.2	EB	DL	6	12	60		8	8		
8.2	EB	DL	6	12	60		8	8		
8.2	EB	DL	10	12	68		14	14		
8.3	EB	DL	20	12	88		27			27
8.3	EB	DL	20	12	88		27			27
8.5	EB	DL	30	6	84	15	20		20	
8.6	EB	DL	6	12	60		8	8		
8.7	EB	DL	6	12	60		8	8		
9.1	EB	DL	15	12	78		20		20	
9.3	EB	PL	30	12	108	15	40			40
9.3	EB	DL	25	12	98	13	34			34
10.0	EB	DL	8	12	64		11	11		
TOTAL (EB):					2988	108	678	233	156	289

USER NAME = murrayda	DESIGNED -	REVISED -
	DRAWN -	REVISED -
PLOT SCALE = 2,000' / in.	CHECKED -	REVISED -
PLOT DATE = 8/10/2020	DATE -	REVISED -

**STATE OF ILLINOIS
 DEPARTMENT OF TRANSPORTATION**

SCHEDULE OF QUANTITIES

SCALE: SHEET 1 OF 4 SHEETS STA. TO STA.

F.A.I.	SECTION	COUNTY	TOTAL SHEETS	SHEET NO.
64	95-(3,4,5)PP-1	WASHINGTON	10	6
CONTRACT NO. 76N94				
ILLINOIS FED. AID PROJECT				

