

FOR INDEX OF SHEETS, SEE SHEET NO. 1

1. COVER /SIGNATURE SHEET
2. GENERAL /SPECIFIC NOTES
3. SUMMARY OF QUANTITIES
4. LINE DIAGRAM /JOB LOCATION
5. SCHEDULE OF QUANTITIES

HIGHWAY STANDARDS

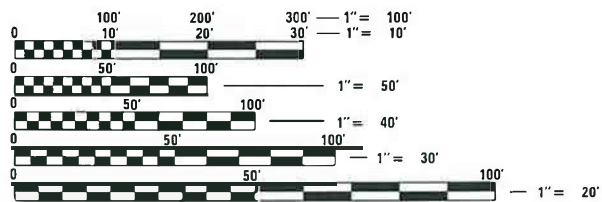
701101-05
701901-08

CADD STANDARDS

N/A

TRAFFIC VOLUME

ADT 5250/2017
MU 50
SU 150



FULL SIZE PLANS HAVE BEEN PREPARED USING STANDARD ENGINEERING SCALES. REDUCED SIZED PLANS WILL NOT CONFORM TO STANDARD SCALES. IN MAKING MEASUREMENTS ON REDUCED PLANS, THE ABOVE SCALES MAY BE USED.

J.U.L.I.E.
JOINT UTILITY LOCATION INFORMATION FOR EXCAVATORS
1-800-892-0123
OR 811

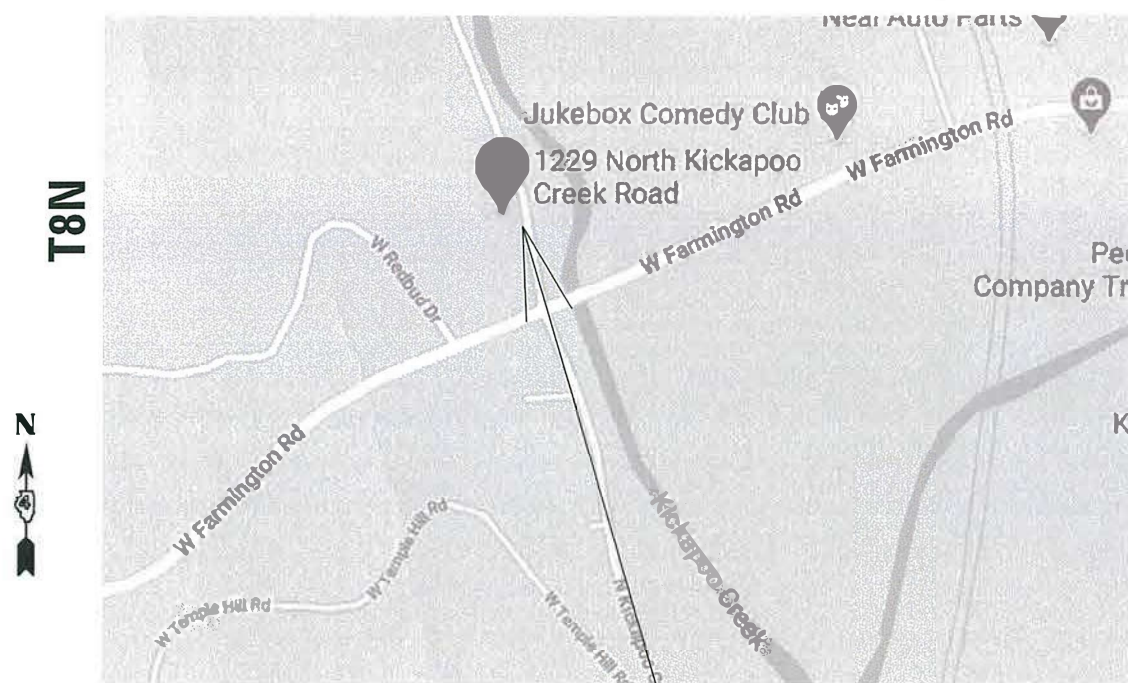
PROJECT ENGINEER George Elias, 309-671-3467
PROJECT MANAGER Richard Dotson 309-671-3455
CONTRACT NO. 68E60
CAT. NO. 032475-04D

STATE OF ILLINOIS
DEPARTMENT OF TRANSPORTATION

**PROPOSED
HIGHWAY PLANS**

FAU 6576
KICKAPOO CREEK ROAD
SECTION 11R-DM-1
BUILDING DEMOLITION
PEORIA COUNTY

R7E C-94-098-18

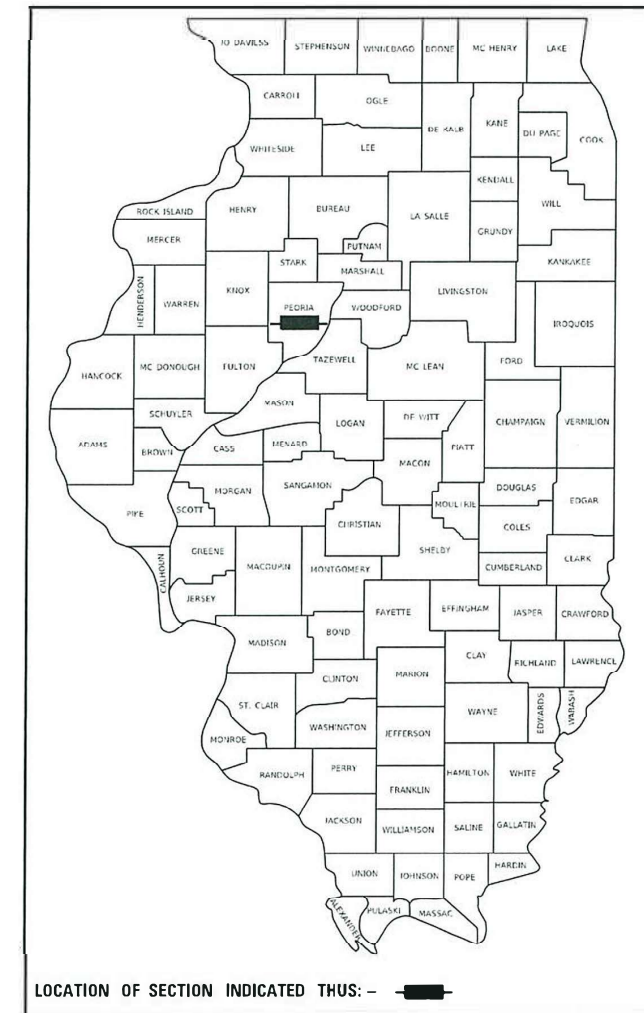


JOB LOCATION

GROSS LENGTH = 400 FT. = 0.08 MILE
NET LENGTH = 400 FT. = 0.08 MILE

F.A.U.	SECTION	COUNTY	TOTAL SHEETS	SHEET NO.
6576	11R-DM-1	PEORIA	5	1

D-94-073-18



STATE OF ILLINOIS
DEPARTMENT OF TRANSPORTATION

SUBMITTED Aug 21 2020
Kenal A Garnett RSD
REGIONAL ENGINEER

October 2, 2020
[Signature]
ENGINEER OF DESIGN AND ENVIRONMENT

October 2, 2020
[Signature]
DIRECTOR OF HIGHWAYS PROJECT IMPLEMENTATION 13

**PRINTED BY THE AUTHORITY
OF THE STATE OF ILLINOIS**

COMMITMENTS

Commitments are not to be altered without the written approval of all parties to which the commitment was made. **NO COMMITMENT MADE.**

ENVIRONMENTAL REVIEWS

Prior to the use of any proposed borrow areas, use areas (temporary access roads, detours, run-arounds, etc.) and/or waste areas, the Contractor shall file the required environmental resource request surveys according to Section 107.22 of the Standard Specifications. These surveys are required in order for the Department to conduct cultural and biological resource surveys for the proposed site.

The required environmental resource documentation shall include the following:

- * BDE Form 2289 (Cultural and Natural Resources Review of Borrow Areas)
- * BDE Form 2290 (Waste/Use Area Review)
- * A location map showing the size limits and location of the use area
- * Color photographs depicting the use area
- * Borrow Area Entry Agreement form – D4 PI0101

Prior to any waste materials being removed from the construction site the required environmental resource surveys shall be obtained and filed by the Contractor. Excess waste products removed from the construction site shall be disposed of as required in Section 202.03 of the Standard Specifications.

Any protruding metal bars shall be removed prior to the disposal of broken concrete at approved disposal sites.

Please note that a minimum of four weeks shall be allowed for the District to obtain the required environmental clearances and six weeks for the required borrow site environmental clearances.

JOB SPECIFIC NOTES

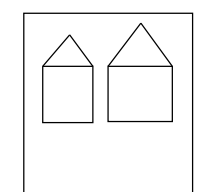
Per Building inspection for Friable /non Friable Asbestos by PSI, INC the results confirmed that the building at hand has **NO Asbestos DETECTED** Therefore, no Asbestos tables or sheet are included in the plans

Removing of the garage, play ground set and air unit with concrete pad will be included in the pay item Z0007601 (BLDG. REMV. NO 1)

MODEL: Default
 FILE: \\blm1c1.pva\pub\lansom.d\at\links\gov\PIW\DOT\Documents\DOT_Offices\District 4\Projects\11R-DM-1\68E60\CADD\Drawings\11R-DM-1\68E60-CADD.dwg

USER NAME = eliasgs	DESIGNED -	REVISED -	STATE OF ILLINOIS DEPARTMENT OF TRANSPORTATION	GENERAL /SPECIFIC NOTES		F.A.U. RTE.	SECTION	COUNTY	TOTAL SHEETS	SHEET NO.
PLOT SCALE = 100,0000 ' / in.	DRAWN -	REVISED -				6576	11R-DM-1	PEORIA	\$55	2
PLOT DATE = 8/7/2020	CHECKED -	REVISED -		SCALE: SHEET OF SHEETS STA. TO STA.		CONTRACT NO. 68E60				
	DATE -	REVISED -		ILLINOIS FED. AID PROJECT						

**Building Demo
1229 N. Kickapoo
Creek Road**



Kickapoo Creek Road

Farmington Road

MODEL: Default
FILE: \\nas101.pw.state.il.us\pub\rooms\data\illinois.gov\PW\DOT\Documents\DOT_Offices\District_4\Projects\ID4_68E60\CAD\Drawings\ID468E60-CAD\Draw.dgn

USER NAME = eliasgs	DESIGNED -	REVISED -
	DRAWN -	REVISED -
PLOT SCALE = 100.0000' / in.	CHECKED -	REVISED -
PLOT DATE = 8/7/2020	DATE -	REVISED -

**STATE OF ILLINOIS
DEPARTMENT OF TRANSPORTATION**

LINE DIAGRAM

SCALE: SHEET OF SHEETS STA. TO STA.

F.A.U. RTE.	SECTION	COUNTY	TOTAL SHEETS	SHEET NO.
6576	11R-DM-1	PEORIA	5	4
CONTRACT NO. 68E60			ILLINOIS FED. AID PROJECT	

Buildings Removal NO 1 (Z0007601)	L. Sum
Job Location	1.0
Rem. Ext. Septic Tank (X0488100)	Each
Job Location	1
Mobilization (67100100)	L.Sum
Job Location	1.0
Brick Wall Removal (X032190)	Ft
Job Location	32

Concrete Removal (50102400)	Cu. Yd
concrete deck	15.5
concrete steps	0.5
porch concrete column	3
concrete foundation	8
Total (Job Location)	27

MODEL: Default
 FILE: \\nas101.pva.hq.panorama.dia.illinois.gov\PI\DOT\Documents\DOT_Offices\Director_4\Projects\ID14_68E60\CADD\Drawings\ID14_68E60-CADD.dwg.com

USER NAME = eliasgs	DESIGNED -	REVISED -
	DRAWN -	REVISED -
PLOT SCALE = 100.0000' / in.	CHECKED -	REVISED -
PLOT DATE = 8/7/2020	DATE -	REVISED -

**STATE OF ILLINOIS
DEPARTMENT OF TRANSPORTATION**

SCHEDULE OF QUANTITIES

SCALE: SHEET OF SHEETS STA. TO STA.

F.A.U. RTE.	SECTION	COUNTY	TOTAL SHEETS	SHEET NO.
6576	11R-DM-1	PEORIA	5	5
			CONTRACT NO. 68E60	
		ILLINOIS	FED. AID PROJECT	