

# INDEX OF SHEETS

11-06-2020 LETTING ITEM 114

- 1 COVER SHEET
- 2 GENERAL NOTES
- 3-4 QUANTITIES
- 5 TYPICAL SECTIONS
- 6 GENERAL PLAN
- 7 REMOVAL PLAN
- 8 PAVEMENT MARKING PLAN
- 9 ADA INTERSECTION PLAN - SHELDON & CAMPBELL
- 10 DETAILS

## STATE OF ILLINOIS DEPARTMENT OF TRANSPORTATION DIVISION OF HIGHWAYS

# PROPOSED SAFE ROUTES TO SCHOOL

### HIGHWAY STANDARDS

- 000001-07 STANDARD SYMBOLS, ABBREVIATIONS AND PATTERNS
- 001006 DECIMAL OF AN INCH AND OF A FOOT
- 424001-11 PERPENDICULAR CURB RAMPS FOR SIDEWALKS
- 424016-05 MID-BLOCK CURB RAMPS FOR SIDEWALKS
- 424031-02 MEDIAN PEDESTRIAN CROSSINGS
- 542301-03 PRECAST REINFORCED CONCRETE FLARED END SECTION
- 602301-04 INLET - TYPE A
- 604006-05 FRAME AND GRATE TYPE 3
- 604046-03 FRAME AND GRATE TYPE 10
- 606001-07 CONCRETE CURB TY B AND COMB. CONC. CURB AND GUTTER
- 606301-04 PORTLAND CEMENT CONCRETE ISLANDS AND MEDIANS
- 701501-06 URBAN LANE CLOSURE, 2L, 2W, UNDIVIDED
- 701801-06 SIDEWALK, CORNER OR CROSSWALK CLOSURE
- 701901-08 TRAFFIC CONTROL DEVICES
- 780001-05 TYPICAL PAVEMENT MARKINGS
- 602401-06 PRECAST MANHOLE, TYPE A, 4' (1.22m) DIAMETER
- 604001-05 FRAMES AND LIDS, TYPE 1

VARIOUS ROUTES  
SECTION 19-00111-00-BT  
PROJECT R6L9(934)  
SAFE ROUTES TO SCHOOL  
VILLAGE OF RANTOUL  
CHAMPAIGN COUNTY

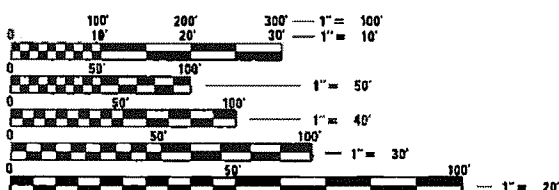
C-95-004-20

F.A. RTE.	SECTION	COUNTY	TOTAL SHEETS	SHEET NO.
	19-00111-00-BT	CHAMPAIGN	10	1
VILLAGE OF RANTOUL, ILLINOIS		CONTRACT NO 91588		



ENGINEERING PLAN SUBMITTALS	
PRELIMINARY PLAN REVIEW NO.	
PRELIMINARY PLAN REVIEW DATE	
FINAL PLAN REVIEW NO.	
FINAL PLAN REVIEW DATE	
PERMIT APPLICATION	
BIDDING	
CONSTRUCTION	

DATE: 08-26-2020

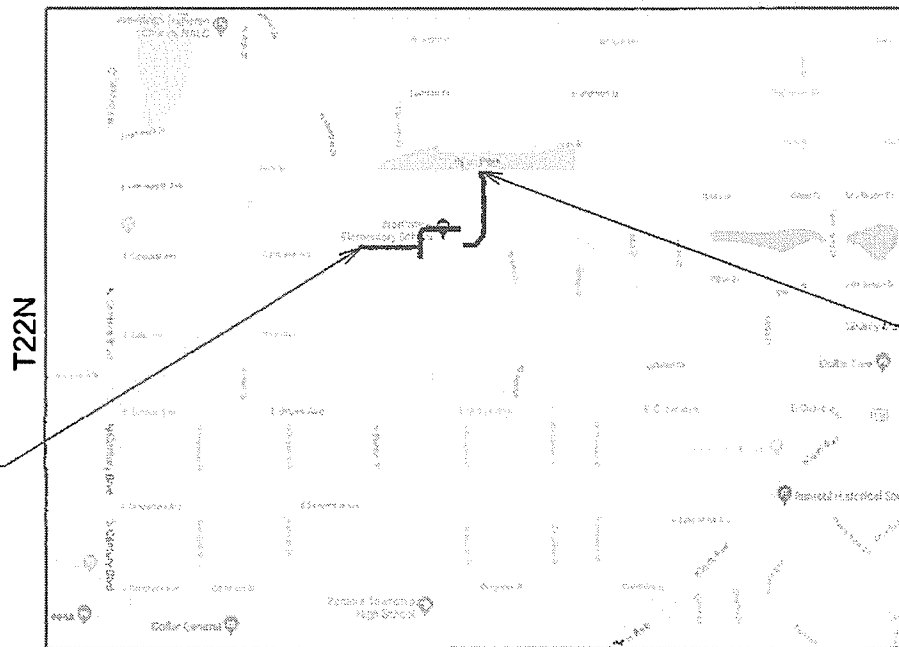


FULL SIZE PLANS HAVE BEEN PREPARED USING STANDARD ENGINEERING SCALES. REDUCED SIZED PLANS WILL NOT CONFORM TO STANDARD SCALES. IN MAKING MEASUREMENTS ON REDUCED PLANS, THE ABOVE SCALES MAY BE USED.

J.U.L.I.E.  
JOINT UTILITY LOCATION INFORMATION FOR EXCAVATION  
1-800-892-0123  
OR 811

PROJECT ENGINEER: P. SMIT  
PROJECT MANAGER: D. CLARK

CONTRACT NO. 91588



PROJECT BEGINS  
SHELDON ST  
& CAMPBELL AVE

PROJECT ENDS  
MULTI-USE PATH CONNECTION

R93  
LOCATION MAP  
(NOT TO SCALE)

GROSS LENGTH = 1050.29 FT. = 0.199 MILE  
NET LENGTH = 1050.29 FT. = 0.199 MILE

ESI CONSULTANTS, LTD.

THIS DOCUMENT IS THE PROPERTY OF ESI CONSULTANTS, LTD. AND NO PART HEREIN SHALL BE USED EXCEPT FOR THIS SPECIFIC PROJECT WITHOUT THE WRITTEN CONSENT OF ESI CONSULTANTS, LTD.

STATE OF ILLINOIS  
DEPARTMENT OF TRANSPORTATION  
DIVISION OF HIGHWAYS

APPROVED: *[Signature]*  
Director of Public Works - Village of Rantoul  
LOCAL AGENCY POSITION

PASSED: SEPT 3, 2020  
*[Signature]*  
DISTRICT 9 ENGINEER OF LOCAL ROAD & STREETS

RELEASED FOR BIDDING  
DATE OF LIMITED REVIEW: 09-03-2020  
*[Signature]*  
DISTRICT 9 ENGINEER

PRINTED BY THE AUTHORITY  
OF THE STATE OF ILLINOIS

PRINTED DATE: 8/25/2020  
FILE NAME: H:\Projects\Rantoul\_Village\019-79 Northside Elementary RFS\CD001\CD001.dwg (7/9), B1, C5.dgn

## GENERAL NOTES

ANY REFERENCE TO STANDARDS THROUGHOUT THE PLANS SHALL BE INTERPRETED TO BE THE LATEST STANDARDS OF THE IL DEPARTMENT OF TRANSPORTATION AS SHOWN ON THE SCHEDULE OF STANDARD DRAWINGS ON THE COVER SHEET.

WHERE SECTION OR SUBSECTION MONUMENTS ARE ENCOUNTERED THE ENGINEER SHALL BE NOTIFIED BEFORE SUCH MONUMENTS ARE REMOVED. THE CONTRACTOR SHALL PROTECT AND CAREFULLY PRESERVE ALL PROPERTY MARKERS AND/OR MONUMENTS UNTIL THE OWNER, AUTHORIZED SURVEYOR, OR AGENT HAS WITNESSED, OR REFERENCED THEIR LOCATION. THE CONTRACTOR WILL BE RESPONSIBLE FOR HAVING AN AUTHORIZED SURVEYOR REESTABLISH ANY SECTION OR SUB-SECTION MONUMENTS DESTROYED BY HIS OPERATIONS.

THE CONTRACTOR SHALL COORDINATE ACTIVITIES WITH ALL UTILITIES WITHIN THE PROJECT LIMITS. THE CONTRACTOR IS REQUIRED TO CONTACT J.U.L.I.E. AT, 1-800-892-0123, PRIOR TO PROCEEDING WITH ANY EXCAVATION AND WORK ON THE PROJECT.

DURING CONSTRUCTION THE CONTRACTOR MAY ENCOUNTER VARIOUS TYPES OF UNDERGROUND UTILITIES THAT MAY NOT BE SHOWN ON THE PLANS. THE CONTRACTOR SHALL COOPERATE WITH THE ENGINEER AND THE OWNER OF THE UTILITY WHILE THE UTILITY COMPANY ADJUSTS THEIR FACILITIES IF NECESSARY. IF IT IS DETERMINED THAT THE UTILITY HAS BEEN ABANDONED, THE CONTRACTOR SHALL BE DIRECTED TO REMOVE THE UTILITY LINES THAT CONFLICT WITH HIS WORK AND CAP OR PLUG THE LINES AS DIRECTED BY THE ENGINEER. THIS WORK SHALL NOT BE PAID FOR SEPARATELY AND SHALL BE CONSIDERED AS INCLUDED IN THE CONTRACT.

CONCRETE CURB AND GUTTER JOINTS SHALL BE SAWED/CONSTRUCTED AT A MAXIMUM OF 15 FOOT SPACING.

ALL REMOVAL LIMITS SHALL BE SAW CUT AND SHALL BE FULL DEPTH WITH AN APPROVED SAW.

ALL SAW CUTS, NECESSARY TO COMPLETE THE WORK DETAILED IN THESE PLANS, SHALL BE INCLUDED IN THE COST FOR THE VARIOUS PAY ITEMS INVOLVED.

WHERE THE PROPOSED COMBINATION CONCRETE CURB AND GUTTER JOINS THE EXISTING CURB AND GUTTER, THERE MAY BE A TRANSITION IN THE CURB AND GUTTER. THIS TRANSITION SHALL BE CONSTRUCTED IN THE FIRST 3 FEET BETWEEN THE EXISTING AND PROPOSED CURBS. THIS WORK SHALL BE CONSIDERED INCLUDED WITH COMBINATION CONCRETE CURB AND GUTTER AND NO ADDITIONAL COMPENSATION WILL BE ALLOWED.

GRADING SHALL BE DONE BY HAND AROUND LIGHT POLES, UTILITY POLES, SIGN POSTS, SHRUBS, TREES, FENCES, AND OTHER NATURAL OR MAN-MADE OBJECTS WHERE SHALLOW FILLS OR CUTS ARE ADJACENT TO THESE ITEMS. IT IS THE INTENT THAT ITEMS THAT DO NOT NEED TO BE DISTURBED BY THE CONSTRUCTION SHALL BE PRESERVED. THE DECISION AS TO ITEMS TO REMAIN IN PLACE SHALL BE AS DIRECTED BY THE ENGINEER. THIS WORK WILL NOT BE PAID FOR SEPARATELY, BUT SHALL BE CONSIDERED INCLUDED IN THE CONTRACT AND NO ADDITIONAL COMPENSATION SHALL BE ALLOWED.

ALL CONSTRUCTION TRAFFIC SHALL MOVE IN DIRECTION OF OPEN LANE OF TRAFFIC.

SIDEWALK DETAILS ARE PROVIDED AS A GUIDE. EXISTING CONDITIONS MAY REQUIRE MODIFICATION TO MEET ADA SPECIFICATIONS. IT IS THE RESPONSIBILITY OF THE CONTRACTOR TO CONSTRUCT SIDEWALK RAMPS TO MEET ALL FEDERAL, STATE, AND LOCAL ADA GUIDELINES.

## HOT-MIX ASPHALT

LOCATION:	NORTHVIEW ELEMENTARY	NORTHVIEW ELEMENTARY
MIXTURE USE	ENTRANCE AND PARKING SURFACE	ENTRANCE AND PARKING BINDER
AC/PG	PG 64-22	PG 64-22
DESIGN AIR VOIDS	4.0% @ Ndes = 50	4.0% @ Ndes = 50
MIX COMP(GRADATION)	IL-9.5	IL-19.0
FRICTION AGGREGATE	MIX D	N/A
MIXTURE WEIGHT	112	112
QUALITY MGMT PROGRAM	QC/QA	QC/QA
SUBLOT SIZE	N/A	N/A

PRINTED DATE: 9/2/2026  
 FILE NAME: M:\Projects\19-791 Northview Elementary\_SRTS\CADD\Drawings\791\_02\_Gndgn



USER NAME = JDOT VB	DESIGNED - PS	REVISED -
PLOT SCALE = 1/8"=1'	DRAWN - PS	REVISED -
PLOT DATE = 9/2/2026	CHECKED - DC	REVISED -
	DATE -	REVISED -

**STATE OF ILLINOIS  
DEPARTMENT OF TRANSPORTATION**

GENERAL NOTES

F.A. RTE	SECTION	COUNTY	TOTAL SHEETS	SHEET NO
	19-00111-00-BT	CHAMPAIGN	10	2
CONTRACT NO 91588				
ILLINOIS FEDERAL AID PROJECT				

SUMMARY OF QUANTITIES

SP	PAY CODE	ITEM	UNITS	QUANTITY
	20200100	EARTH EXCAVATION	CU YD	735.0
	21101615	TOPSOIL FURNISH AND PLACE, 4"	SQ YD	173.0
	25000100	SEEDING, CLASS 1	ACRE	0.25
	25000400	NITROGEN FERTILIZER NUTRIENT	POUND	20.0
	25000500	PHOSPORUS FERTILIZER NUTRIENT	POUND	20.0
	25000600	POTASSIUM FERTILIZER NUTRIENT	POUND	20.0
	25100635	HEAVY DUTY EROSION CONTROL BLANKET	SQ YD	875.0
	35101800	AGGREGATE BASE COURSE, TYPE B, 6"	SQ YD	505.0
	40600290	BITUMINOUS MATERIALS (TACK COAT)	POUND	235.0
	40603080	HOT-MIX ASPHALT BINDER COURSE IL-19.0 N50	TON	174.0
	40604060	HOT-MIX ASPHALT SURFACE COURSE, IL-9.5, MIX D, N50	TON	68.0
	42000300	PORTLAND CEMENT CONCRETE PAVEMENT 8 IN	SQ YD	19.0
	42300200	PCC DRIVEWAY PAVEMENT, 6 IN	SQ YD	12.0
	42400100	PCC SIDEWALK, 4 IN	SQ FT	8815.0
	42400300	PCC SIDEWALK, 6 IN	SQ FT	47.0
	42400800	DETECTABLE WARNING	SQ FT	135.0
	44000100	PAVEMENT REMOVAL	SQ YD	628.0
	44000200	DRIVEWAY PAVEMENT REMOVAL	SQ YD	12.0
	44000500	COMB C&G REM	FOOT	590.0
	44000600	SIDEWALK REMOVAL	SQ FT	2171.0
	54213655	PRECAST REINFORCED CONCRETE FLARED END SECTIONS, 10"	EACH	1.0
	542D0215	PIPE CULVERTS CLASS D, TYPE 1, 10"	FOOT	20.0
	60235700	INLETS, TYPE A, TYPE 3 FRAME AND GRATE	EACH	1.0
	60261200	INLETS TO BE ADJUSTED WITH NEW TYPE 10 FRAME AND GRATE	EACH	1.0
	60603800	COMB C&G TY B6.12	FOOT	641.0
	60619600	CONCRETE MEDIAN, TYPE SB 6.12	SQ FT	210.0
	67100100	MOBILIZATION	LSUM	1.0
	70102620	TRAF CONT PROT, STD 701501	LSUM	1.0
	70102640	TRAF CONT PROT, STD 701801	LSUM	1.0
Δ	72000100	SIGN PANEL - TYPE 1	SQ FT	18.5
Δ	72800100	TELESCOPING STEEL SIGN SUPPORT	FOOT	72.0
Δ	73100100	BASE FOR TELESCOPING STEEL SIGN SUPPORT	EACH	5.0
Δ	78001100	PAINT PAVEMENT MARKING - LETTERS AND SYMBOLS	SQ FT	40.0
Δ	78001110	PAINT PVMT MRK LINE - 4"	FOOT	169.0
Δ	78001130	PAINT PVMT MRK LINE - 6"	FOOT	555.0
Δ	78001150	PAINT PVMT MRK LINE - 12"	FOOT	594.9
Δ	78001180	PAINT PVMT MRK LINE - 24"	FOOT	55.0
	X0327980	PAVEMENT MARKING REMOVAL - WATER BLASTING	SQ FT	371.0
	X6020095	MANHOLES, TYPE A, 4' DIA, TYPE 1 FRAME, CLOSED LID, RESTRICTOR PLATE	EACH	1.0
	Z0013798	CONSTRUCTION LAYOUT	LSUM	1.0

Δ SPECIALTY ITEMS

SCHEDULE OF QUANTITIES

DETECTABLE WARNINGS - 42400800

Street	Location	Station	Width (ft)	Length (ft)	SQ FT
Sheldon St.	Lt.	Sheldon St.	4.2	2.0	9.0
Sheldon St.	Rt.	Sheldon St.	5.0	2.0	10.0
Sheldon St.	Rt.	School Bus Ent.	5.0	2.0	10.0
Sheldon St.	Rt.	School Bus Exit	5.0	2.0	10.0
School Ent.	Rt.	Bus Turn Around	9.8	2.0	20.0
School Ent.	Lt.	Bus Turn Around	6.0	2.0	12.0
School Ent.	Lt.	Bus Drop Off	6.0	2.0	12.0
School Ent.	Rt.	Bus Drop Off	6.0	2.0	12.0
Illinois Dr.	Rt.	Bike Path	10.0	2.0	20.0
Illinois Dr.	Lt.	Bike Path	10.0	2.0	20.0
Total					135.0

PAVEMENT MARKING REMOVAL - WATER BLASTING X0327980

Street	Location	Station	Length (ft)	Width (ft)	SQ FT
Sheldon St.	Rt.	Stop Bar	19.7	2.0	39.5
Sheldon St.	Ct.	Crswk	44.9	0.3	15.0
Sheldon St.	Ct.	Crswk	46.5	0.3	15.5
Sheldon St.	Lt.	Stop Bar	19.7	2.0	39.5
School Ent.	Ct.	Crswk	20.3	0.3	6.8
School Ent.	Ct.	Crswk	18.0	0.3	6.0
Sheldon St.	Rt.	Stop Bar	18.5	2.0	37.0
Sheldon St.	Rt.	Left Turn Arrow	-	-	8.8
Sheldon St.	Rt.	Centerline	21.0	0.3	6.9
Sheldon St.	Rt.	Right Turn Arrow	-	-	8.8
School Ent.	Ct.	Center Parking	303.0	0.3	101.0
School Ent.	Ct.	Bus Turn Around	30.4	0.8	23.0
School Ent.	Ct.	Bus Turn Around	30.2	0.8	22.7
School Ent.	Ct.	Bus Turn Around	54.1	0.8	40.6
Total					371.0

PAINT PAVEMENT MARKING LINE, 4 INCH - 78001110

Street	Location	Station	Color	Length (ft)	Number	Foot
School Ent.	Lt.	Sheldon St.	White	168.9	1.0	169.0
Total						169.0

PAINT PAVEMENT MARKING LINE, 6 INCH - 78001130

Street	Location	Station	Color	Length (ft)	Number	Foot
Sheldon St.	Ct.	Crswk	White	52.7	2	105.4
School Ent.	Ct.	Crswk	White	26.1	2	52.2
School Ent.	Ct.	Bus Turn Around	White	53.9	2	107.9
School Ent.	Lt.	Bus Turn Around	Yellow	184.6	1	184.6
School Ent.	Ct.	Bus Drop Off	White	28.0	2	56.0
Illinois Dr.	Ct.	Bike Path	White	24.5	2	49.0
Total						555.0

PAINT PAVEMENT MARKING LINE, 12 INCH - 78001150

Street	Location	Station	Color	Length (ft)	Number	Foot
Sheldon St.	Ct.	Crswk	White	7.1	16	113.2
Sheldon St.	Ct.	Crswk	White	2.8	1	2.9
School Ent.	Ct.	Crswk	White	6.0	8	48.1
School Ent.	Ct.	Crswk	White	1.2	2	2.5
School Ent.	Ct.	Bus Turn Around	White	7.0	17	119.0
School Ent.	Ct.	Bus Turn Around	White	2.4	3	7.4
School Ent.	Lt.	Bus Turn Around	Yellow	28.3	4	113.2
School Ent.	Lt.	Bus Turn Around	Yellow	18.7	2	37.5
School Ent.	Ct.	Bus Drop Off	White	7.0	9	63.0
Illinois Dr.	Ct.	Bike Path	White	11.0	8	88.0
Total						594.9

PAINT PAVEMENT MARKING LINE, 24 INCH - 78001180

Street	Location	Station	Color	Length (ft)	Number	Foot
Sheldon St.	Rt.	25 before Crswk	White	22.0	1	22.0
Sheldon St.	Ct.	School Bus Exit	White	11.0	1	11.0
Sheldon St.	Lt.	25' after Crswk	White	22.0	1	22.0
Total						55.0

COMBINATION PCC CURB AND GUTTER, B-6.12 - 60603800

Street	Location	Station	Foot
Sheldon	Lt.	Sheldon St.	9.3
Sheldon	Rt.	Sheldon St.	207.7
Sheldon	Rt.	School Bus Exit	16.5
School Ent.	Lt.	Bus Turn Around	7.0
School Ent.	Rt.	Bus Drop Off	360.6
School Ent.	Lt.	Bus Turn Around	7.0
Illinois Dr.	Rt.	Roundabout	8.3
Illinois Dr.	Rt.	Bike Path	12.0
Illinois Dr.	Lt.	Bike Path	12.6
Total			641.0

COMBINATION CURB AND GUTTER REMOVAL - 44000500

Street	Location	Station	Foot
Sheldon St.	Lt.	Sheldon St.	9.3
Sheldon St.	Rt.	School Bus Ent.	258.5
Sheldon St.	Rt.	School Bus Exit	16.5
Front Ent.	Rt.	Bus Drop Off	272.7
Illinois Dr.	Rt.	Roundabout	8.3
Illinois Dr.	Rt.	Bike Path	12.0
Illinois Dr.	Lt.	Bike Path	12.6
Total			590.0

PIPE CULVERTS, CLASS D, TYPE 1, 10" - 542D0215

Street	Location	Station	Size (in)	Foot	Type
Illinois Dr.	Rt.	South East Field	10	8.2	RCP
Illinois Dr.	Rt.	South East Field	10	11.8	RCP
Total				20.0	

CONCRETE MEDIAN, TYPE SB-6.12 - 60619600

Street	Location	Station	SQ FT
School Ent.	Lt.	Bus Turn Around	210.0
Total			210.0

INLETS, TYPE A, TYPE 3 FRAME AND GRATE - 60235700

Street	Location	Station	Each
School Ent.	Rt.	Sheldon St.	1.0
Total			1.0

INLETS TO BE ADJUSTED WITH NEW TYPE 10 FRAME AND GRATE - 60261200

Street	Location	Station	Each
Sheldon St.	Rt.	School Bus Exit	1.0
Total			1.0

PRECAST REINFORCED CONCRETE FLARED END SECTIONS, 10" - 54213655

Street	Location	Station	Each
Illinois Dr.	Rt.	South East Field	1.0
Total			1.0

PAINT PAVEMENT MARKING - LETTERS AND SYM - 78001100

Street	Location	Type	SQ FT
School Ent.	Rt.	Letters	22.2
School Ent.	Rt.	Symbols	17.8
Total			40.0

PRINTED DATE: 9/2/2028 FILE NAME: H:\Drawings\Revised\_Village\_4\19-0011-00-01\Drawings\Elementary\_SRTS\0000-01\19-0011-00-Sheets\791-83-5001-1.dwg



USER NAME = 1007 V61	DESIGNED - PS	REVISED -
PL0T SCALE = #SCALE#	DRAWN - PS	REVISED -
PL0T DATE = 9/2/2028	CHECKED - DC	REVISED -
	DATE -	REVISED -

STATE OF ILLINOIS  
DEPARTMENT OF TRANSPORTATION

SUMMARY OF QUANTITIES  
AND SCHEDULE OF QUANTITIES

P.A. RTE	SECTION	COUNTY	TOTAL SHEETS	SHEET NO
	19-0011-00-01	CHAMPAIGN	10	3
CONTRACT NO 91588				
ILLINOIS FEDERAL AID PROJECT				



**SCHEDULE OF QUANTITIES**

**SIDEWALK REMOVAL - 44000600**

Street	Location	Station	Station	Length (ft)	Width (ft)	SQ FT
Sheldon St.	Lt.	Campbell Ave.		11.5	4.5	51.8
Sheldon St.	Lt.	Campbell Ave.		10.0	5.2	51.7
Sheldon St.	Rt.	Sheldon St.		29.0	3.5	101.5
Sheldon St.	Rt.	Sheldon St.	Bus Turn Around	217.2	5.0	1086.0
Sheldon St.	Rt.	School Bus Ent.		11.2	5.0	56.0
Sheldon St.	Rt.	School Bus Exit		16.0	4.0	64.1
Front Ent.	Rt.	Parent Drop Off		144.9	5.0	724.7
Illinois Dr.	Rt.	Roundabout		5.9	6.0	35.4
<b>Total</b>						<b>2171.0</b>

**PAVEMENT REMOVAL - 44000100**

Street	Location	Station	Note	Length (ft)	Width (ft)	SQ YD
School Ent.	Rt.	Bus Entrance	(Var Depth)	213.6	9.0	214.8
School Ent.	Lt.	Bus Turn Around		19.0	11.6	24.5
School Ent.	Rt.	Bus Drop Off		151.1	17.5	293.8
School Ent.	Rt.	Bus Drop Off		34.7	24.6	94.6
<b>Total</b>						<b>628.0</b>

**DRIVEWAY PAVEMENT REMOVAL - 44000200**

Street	Location	Station	Station	Length (ft)	Width (ft)	SQ YD
Sheldon St.	Rt.			10.5	9.8	12.0
<b>Total</b>						<b>12.0</b>

**HOT-MIX ASPHALT BINDER CSE, 1L-19.0 N50 - 40603080**

Street	Location	Station	Length (ft)	Width (ft)	Thickness (in)	TON
School Ent.	Rt.	School Bus Ent.	204.4	17.1	8.0	174.0
<b>Total</b>						<b>174.0</b>

**BITUMINOUS MATERIALS (TACK COAT) - 40600290**

Street	Location	Station	Length (ft)	Width (ft)	Applications	LBS
School Ent.	Rt.	School Bus Ent.	213.6	25.4	1.0	136.0
School Ent.	Rt.	School Bus Ent.	204.4	19.3	1.0	99.0
<b>Total</b>						<b>235.0</b>

**HOT-MIX ASPHALT SURF COURSE, MIX D N50 - 40604060**

Street	Location	Station	Length (ft)	Width (ft)	Thickness (in)	TON
School Ent.	Rt.	School Bus Ent.	213.6	25.4	2	68.0
<b>Total</b>						<b>68.0</b>

**HEAVY DUTY ERO CONTROL BLANKET - 25100635**

Street	Location	Station	Length (ft)	Width (ft)	SQ YD
School Ent.	Rt.	Bus Drop Off	26.6	43.3	127.8
School Ent.	Rt.	Bus Drop Off	51.4	7.1	40.6
Illinois Dr.	Rt.	Roundabout	5.9	6.0	3.9
Illinois Dr.	Rt.	Rain Garden	62	102	702.7
<b>Total</b>					<b>875.0</b>

**SEEDING, CLASS 1 - 25000100**

Street	Location	Station	Length (ft)	Width (ft)	ACRE
School Ent.	Rt.	Bus Drop Off	26.6	43.3	0.03
School Ent.	Rt.	Bus Drop Off	51.4	7.1	0.01
Illinois Dr.	Rt.	Roundabout	5.9	6.0	0.00
Illinois Dr.	Rt.	Rain Garden	62	102	0.20
<b>Total</b>					<b>0.25</b>

**NITROGEN FERTILIZER NUTRIENT - 25000400**

Street	Location	Station	Length (ft)	Width (ft)	LB
School Ent.	Rt.	Bus Drop Off	26.6	43.3	2.4
School Ent.	Rt.	Bus Drop Off	51.4	7.1	0.8
Illinois Dr.	Rt.	Roundabout	5.9	6.0	0.1
Illinois Dr.	Rt.	Rain Garden	62	102	14.0
<b>Total</b>					<b>20.0</b>

**PHOSPHOROUS FERTILIZER NUTRIENT - 25000500**

Street	Location	Station	Length (ft)	Width (ft)	LB
School Ent.	Rt.	Bus Drop Off	26.6	43.3	2.4
School Ent.	Rt.	Bus Drop Off	51.4	7.1	0.8
Illinois Dr.	Rt.	Roundabout	5.9	6.0	0.1
Illinois Dr.	Rt.	Rain Garden	62	102	14.0
<b>Total</b>					<b>20.0</b>

**POTASSIUM FERTILIZER NUTRIENT - 25000600**

Street	Location	Station	Length (ft)	Width (ft)	LB
School Ent.	Rt.	Bus Drop Off	26.6	43.3	2.4
School Ent.	Rt.	Bus Drop Off	51.4	7.1	0.8
Illinois Dr.	Rt.	Roundabout	5.9	6.0	0.1
Illinois Dr.	Rt.	Rain Garden	62	102	14.0
<b>Total</b>					<b>20.0</b>

**AGG BASE COURSE, TYPE B, 6" - 35101800**

Street	Location	Station	Length (ft)	Width (ft)	SQ YD
School Ent.	Rt.	School Bus Ent.	224.7	20.2	505.0
<b>Total</b>					<b>505.0</b>

**TOPSOIL, FURNISH AND PLACE, 4" - 21101615**

Street	Location	Station	Length (ft)	Width (ft)	SQ YD
School Ent.	Rt.	Bus Drop Off	26.6	43.3	128.0
School Ent.	Rt.	Bus Drop Off	51.4	7.1	41.0
Illinois Dr.	Rt.	Roundabout	5.9	6.0	4.0
<b>Total</b>					<b>173.0</b>

**PORTLAND CEMENT CONCRETE SIDEWALK, 4 INCH - 42400100**

Street	Location	Station	Station	Length (ft)	Width (ft)	Depth (in)	SQ FT
Sheldon St.	Lt.	Campbell Ave.		11.5	4.5	4	51.8
Sheldon St.	Lt.	Campbell Ave.		10.0	5.2	4	52.0
Sheldon St.	Rt.	Sheldon St.		10.0	4.5	4	45.0
Sheldon St.	Rt.	Sheldon St.		10.1	5.0	4	50.5
Sheldon St.	Rt.	School Bus Ent.		151.5	5.0	4	761.5
Sheldon St.	Rt.	School Bus Ent.		3.8	6.6	4	24.9
Sheldon St.	Rt.	School Bus Exit		16.4	5.4	4	88.7
School Ent.	Lt.	Bus Turn Around		16.8	7.0	4	117.8
School Ent.	Rt.	Bus Drop Off	Parent Drop Off	346.0	8.0	4	2768.3
School Ent.	Rt.	Sup. Concrete Pad		50.4	8.7	4	438.5
Front Ent.	Rt.	Bus Drop Off	Front Entrance	9.2	4.0	4	37.0
Illinois Dr.	Ct.	MUP		437.9	10.0	4	4379.1
<b>TOTAL 4 inch</b>							<b>8,815.0</b>

**PORTLAND CEMENT CONCRETE SIDEWALK, 6 INCH - 42400300**

Street	Location	Station	Station	Length (ft)	Width (ft)	Depth (in)	SQ FT
Sheldon St.	Rt.	Campbell Ave.		9.3	5.0	6	47.0
<b>TOTAL 6 inch</b>							<b>47.0</b>

**PORTLAND CEMENT CONC DRIVEWAY PAV, 6 INCH - 42300200**

Street	Location	Station	Station	Length (ft)	Width (ft)	Depth (in)	SQ YD
Sheldon St.	Rt.	Campbell Ave.		10.5	9.8	6	12.0
<b>TOTAL 6 inch</b>							<b>12.0</b>

**PORTLAND CEMENT CONCRETE PAVEMENT, 8 INCH - 42000300**

Street	Location	Station	Station	Length (ft)	Width (ft)	Depth (in)	SQ YD
Sheldon St.	Rt.	School Bus Ent.		25.0	6.5	8	19.0
<b>TOTAL 8 inch</b>							<b>19.0</b>

**EARTH EXCAVATION - 20200100**

Street	Location	Station	Station	Length (ft)	Width (ft)	Depth (ft)	Cu Yd
School Ent.	Rt.	Sheldon St.	Sidewalk	29.0	1.3	0.3	0.5
School Ent.	Rt.	Sheldon St.	C&G	8.0	1.0	1.7	0.5
School Ent.	Rt.	Sheldon St.	C&G @ Sidewalk	3.6	5.5	1.3	1.0
School Ent.	Rt.	Sheldon St.	C&G & Pavement	10.0	5.3	1.7	3.3
School Ent.	Rt.	Sheldon St.	Sdww Median	2.5	1.7	0.3	0.1
School Ent.	Rt.	School Bus Ent.	C&G @ Sidewalk	7.4	5.0	1.3	1.8
School Ent.	Rt.	School Bus Ent.	Bus Turn Around	200.9	8.0	1.7	99.2
School Ent.	Rt.	School Bus Ent.	North of Sdww	136.7	0.5	0.3	0.8
School Ent.	Rt.	School Bus Ent.	South of Sdww	144.0	0.6	0.3	1.0
Sheldon St.	Rt.	School Bus Exit		16.8	1.2	0.3	0.2
School Ent.	Ct.	Bus Turn Around		62.0	5.0	1.3	15.3
School Ent.	Ct.	Bus Turn Around		30.7	53.9	1.7	102.1
School Ent.	Lt.	Bus Turn Around	Median	19.0	11.6	1.3	10.9
Bus Area	Rt.	Parent Drop off		82.4	4.1	0.3	4.1
Front Ent.	Rt.	Parent Drop off		58.2	3.0	0.3	2.2
Illinois Dr.	Rt.	Bike Parking	Sidewalk	16.2	5.0	0.3	1.0
Illinois Dr.	Rt.	Multi-use Path		85.0	10.0	1.0	31.5
Illinois Dr.	Rt.	Rain Garden		-	-	2.5	328.1
Illinois Dr.	Lt.	Multi-use Path		353.0	10.0	1.0	130.7
<b>Total</b>							<b>735.0</b>

**MANHOLES, TY A, 4' DIA, TY 1 FRAME, C.I. RESTRICTOR PLATF - X6020095**

Street	Location	Station	Each
Illinois Dr.	Rt.	South East Field	1.0
<b>Total</b>			<b>1.0</b>

**SIGN PANEL - TYPE 1 - 72000100**

Street	Location	Station	SQ FT
School Ent.	Rt.	School Bus Ent.	1.5
School Ent.	Rt.	School Bus Exit	1.5
School Ent.	Rt.	School Bus Exit	6.0
Sheldon St.	Lt.	Car Entrance	8.0
Illinois Dr.	Lt.	Car Exit	1.5
<b>Total</b>			<b>18.5</b>

**TELESCOPING STEEL SIGN SUPPORT - 72800100**

Street	Location	Station	FOOT
School Ent.	Rt.	School Bus Ent.	13.5
School Ent.	Rt.	School Bus Exit	16.0
Sheldon St.	Lt.	Car Entrance	27.9
Illinois Dr.	Lt.	Car Exit	14.5
<b>Total</b>			<b>72.0</b>

**BASE FOR TELESCOPING STEEL SIGN SUPPORT - 73100100**

Street	Location	Station	EACH
School Ent.	Rt.	School Bus Ent.	1.0
School Ent.	Rt.	School Bus Exit	1.0
Sheldon St.	Lt.	Car Entrance	2.0
Illinois Dr.	Lt.	Car Exit	1.0
<b>Total</b>			<b>5.0</b>

PRINTED DATE: 9/2/2028  
 FILE NAME: N:\Pro\esr\19-0011-00-01\CADD\Civil\CADD\_Sheets\791\_03\_500-2.dgn

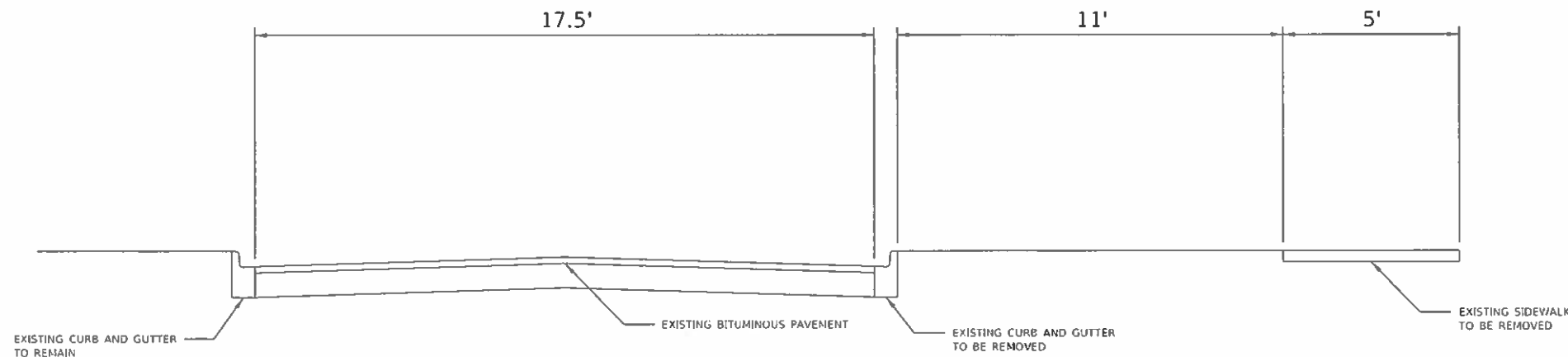


USER NAME : 1001 VB1	DESIGNED - PS	REVIS B -
PLOT SCALE : #SCALE#	DRAWN - PS	REVIS D -
PLOT DATE : 9/2 /2 02	CHECKED - DC	REVIS E -
	DATE -	REVIS F -

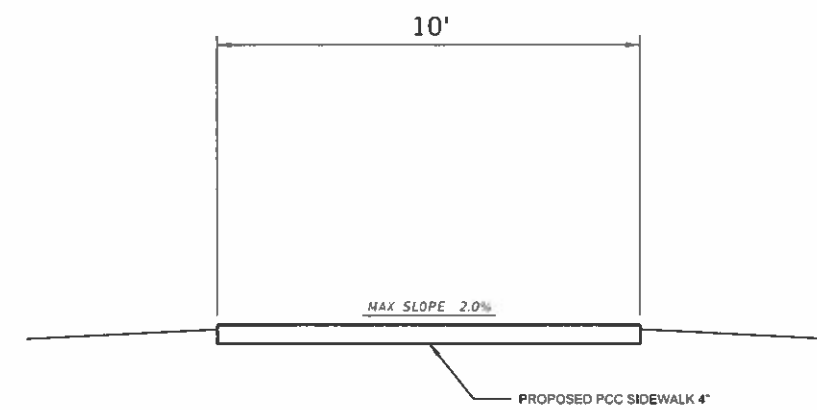
**STATE OF ILLINOIS  
DEPARTMENT OF TRANSPORTATION**

**SCHEDULE OF QUANTITIES**

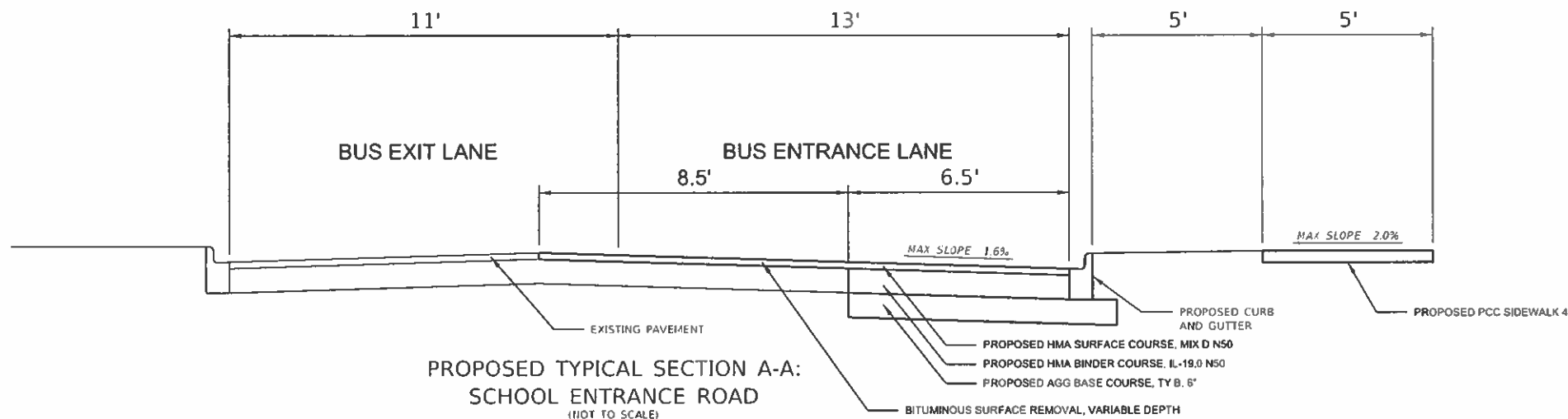
F.A. RTE.	SECTI 0#	COUNTY	TOTAL SHEETS	SHEET NO
	19-0011-00-01	CHAMPAIGN	10	4
<b>CONTRACT NO 91588</b>				
ILLINOIS FEDERAL AID-PROJECT				



EXISTING TYPICAL SECTION:  
SCHOOL ENTRANCE ROAD  
(NOT TO SCALE)

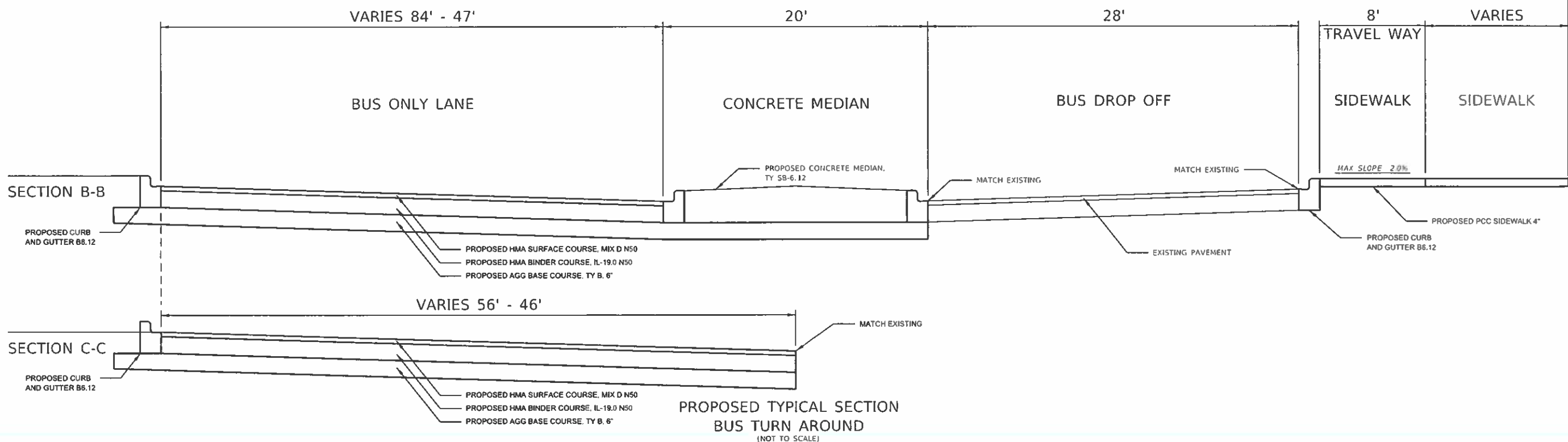


PROPOSED TYPICAL SECTION D-D:  
MULTI-USE PATH  
(NOT TO SCALE)



PROPOSED TYPICAL SECTION A-A:  
SCHOOL ENTRANCE ROAD  
(NOT TO SCALE)

NORTHVIEW ELEMENTARY SCHOOL



PROPOSED TYPICAL SECTION  
BUS TURN AROUND  
(NOT TO SCALE)

PRINTED DATE: 9/2/2028  
 FILE NAME: N:\Projects\19-0011\Rentoul\_Village\_0\19-079-Northview-Elementary-SRIS\CADD\CADD\_Sheets\91\_04\_TopSec.dgn



USER NAME: j00f ybl	DESIGNED - PS	REVISED -
PLOT SCALE: #SCALE#	DRAWN - PS	REVISED -
PLOT DATE: 9/2/2028	CHECKED - DC	REVISED -
	DATE -	REVISED -

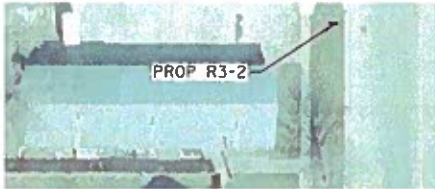
STATE OF ILLINOIS  
DEPARTMENT OF TRANSPORTATION





EXISTING AND PROPOSED TYPICAL SECTIONS

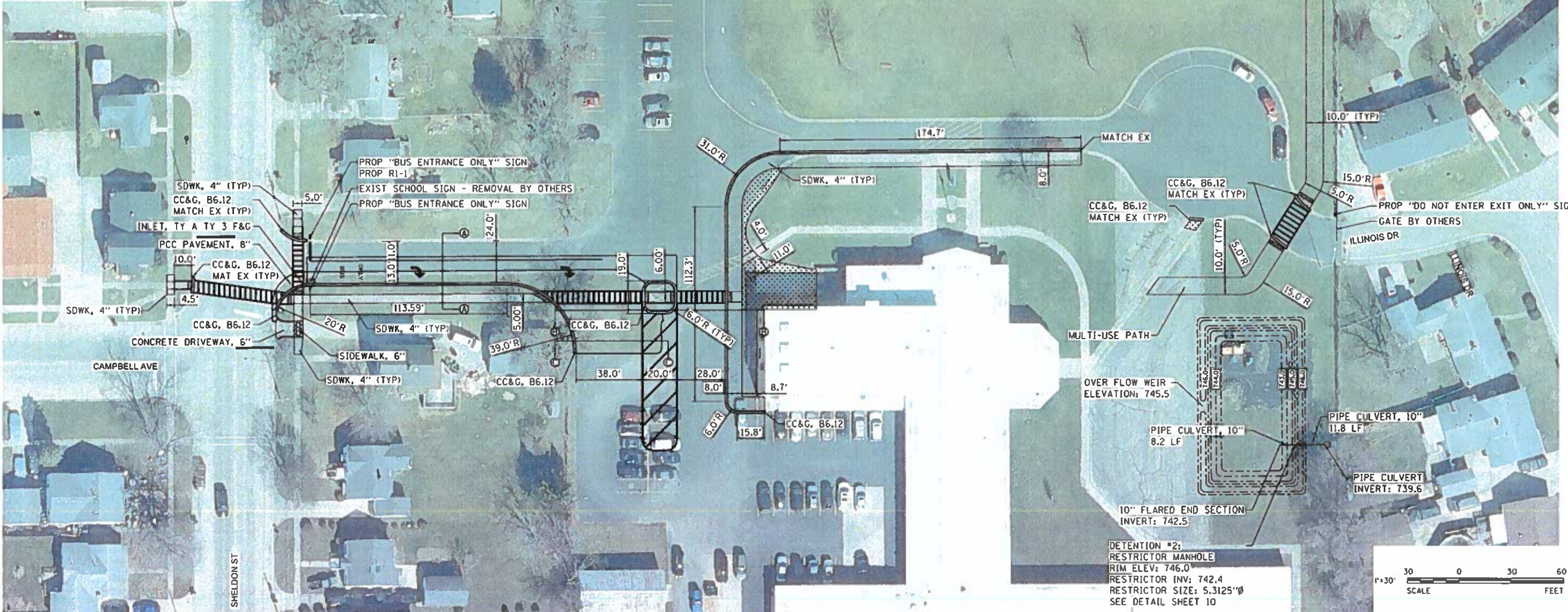
F.A. RTE	SECTION	COUNTY	TOTAL SHEETS	SHEET NO
	19-0011-00-BT	CHAMPAIGN	10	5
CONTRACT NO 91588				
ILLINOIS FEDERAL AID PROJECT				



**NOTE:** CONTRACTOR TO REGRADE SOIL TO FILL IN SIDEWALK REMOVALS AND MATCH EXISTING GRADE  
SCHOOL ENTRANCE TO BE FULLY CLOSED DURING RECONSTRUCTION



-  PCC SIDEWALK 4"
-  PCC SIDEWALK 6"
-  TOPSOIL & SEEDING
-  DETECTABLE WARNING



DETENTION #2;  
RESTRICTOR MANHOLE  
RIM ELEV: 746.0  
RESTRICTOR INV: 742.4  
RESTRICTOR SIZE: 5.3125"  
SEE DETAIL SHEET 10



PRINTED DATE: 9/2/2028  
 FILE NAME: N:\Projects\Illinois\19-00111\Drawings\19-00111-00-07-01.dwg









USER NAME : IODY VB	DESIGNED - PS	REVISED -
PLOT SCALE : 1/8"=1'-0"	DRAWN - PS	REVISED -
PLOT DATE : 9/2/2028	CHECKED - DC	REVISED -
	DATE -	REVISED -

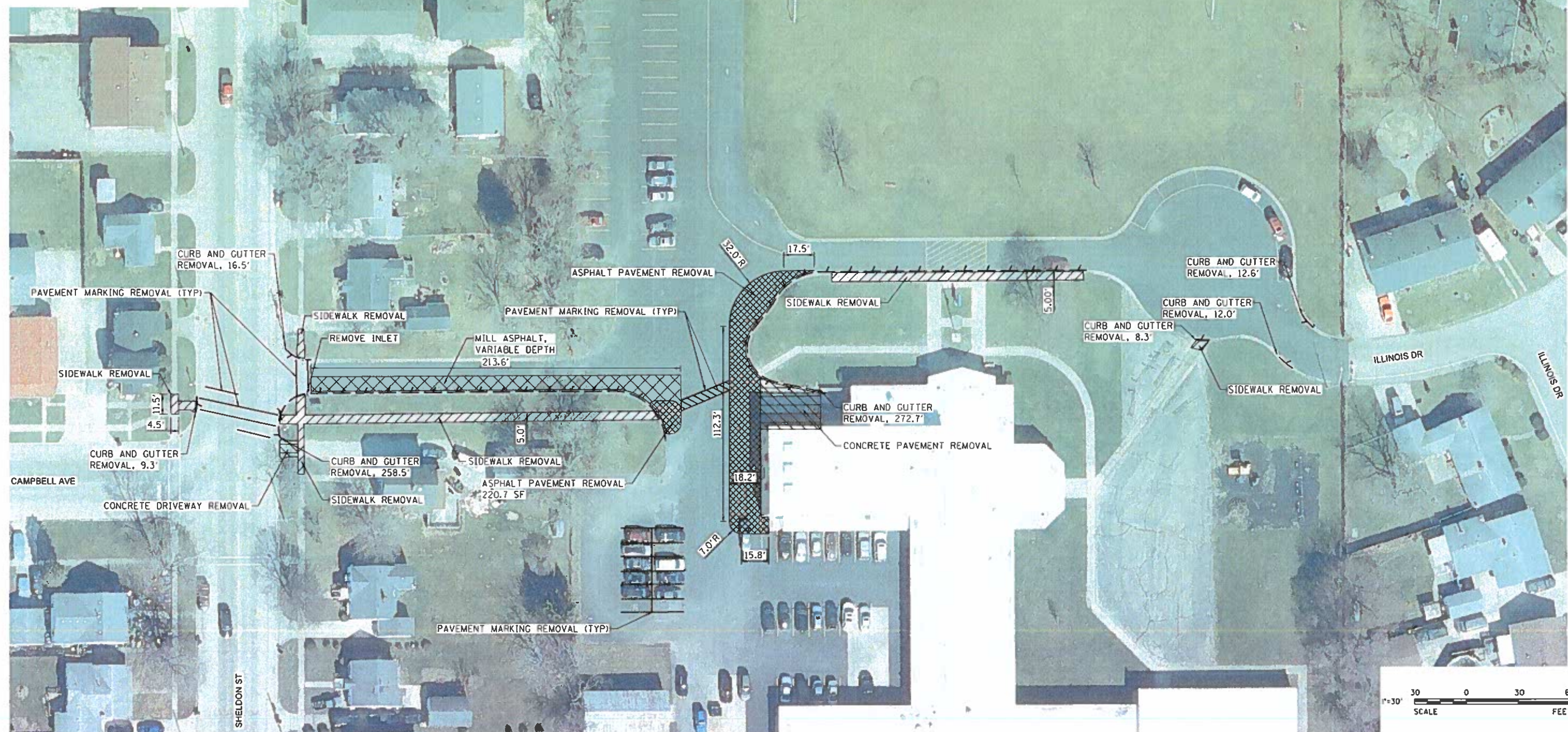
**STATE OF ILLINOIS  
DEPARTMENT OF TRANSPORTATION**

**NORTHVIEW ELEMENTARY SCHOOL  
PLAN VIEW**

F.A. RTE	SECTION	COUNTY	TOTAL SHEETS	SHEET NO
	19-00111-00-07	CHAMPAIGN	10	6
CONTRACT NO 91588				
ILLINOIS FEDERAL AID PROJECT				



-  SIDEWALK REMOVAL
-  ASPHALT REMOVAL, FULL DEPTH
-  ASPHALT MILLING, VARIABLE DEPTH
-  CONCRETE PAVEMENT REMOVAL
-  CURB AND GUTTER REMOVAL
-  PAVEMENT MARKING REMOVAL



PRINTED DATE: 9/2/2020  
 FILE NAME: N:\Projects\2019\19-0011\Northview-Elementary-SR15\CADD\Civil\CADD\_Sheets\791\_86\_remove.dgn



USER NAME - 100T V81	DESIGNED - PS	REVISED -
PLOT SCALE - #SCALE#	DRAWN - PS	REVISED -
PLOT DATE - 9/2/2020	CHECKED - DC	REVISED -
	DATE -	REVISED -

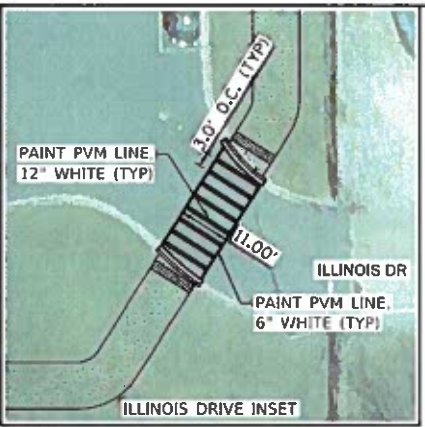
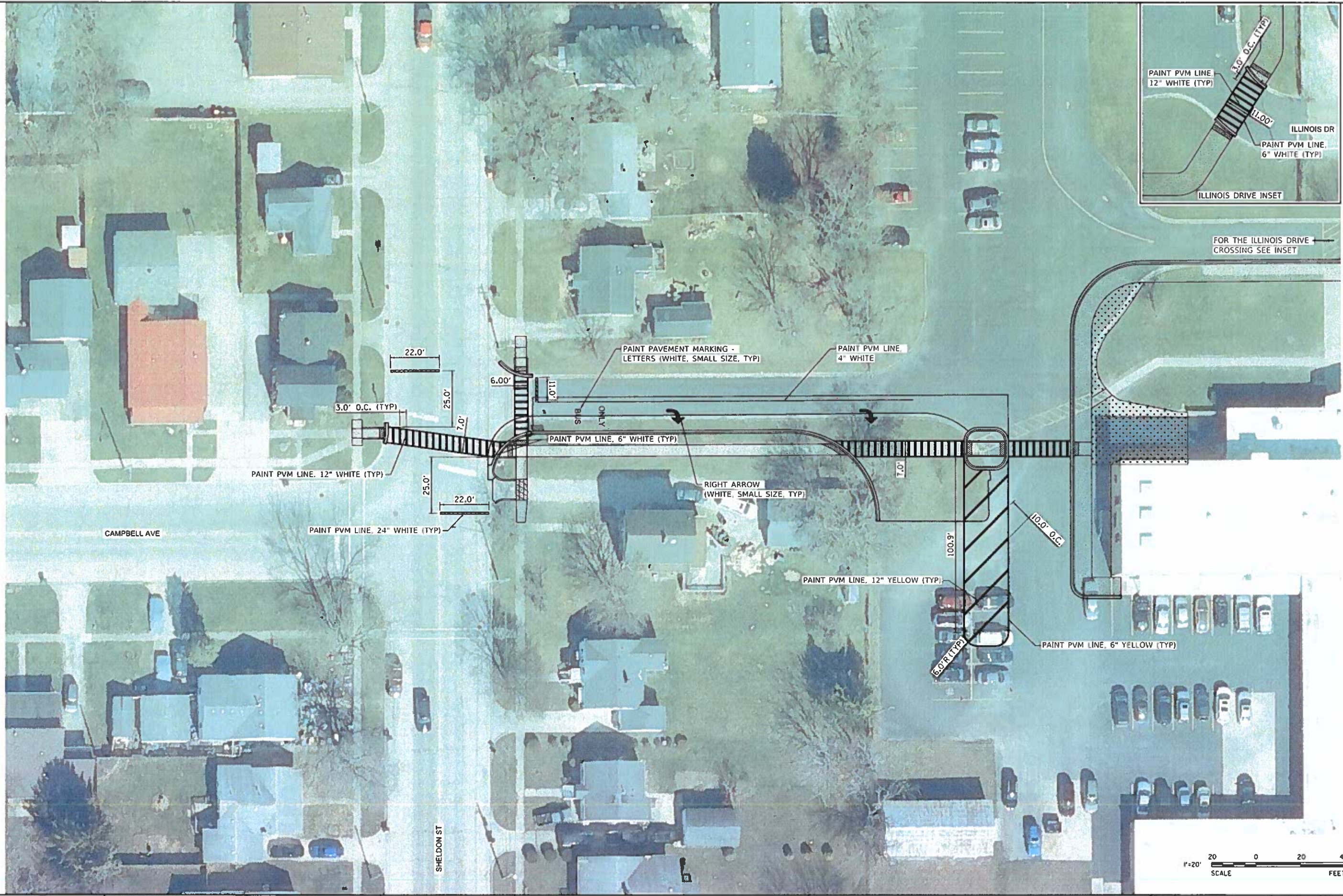
**STATE OF ILLINOIS**  
**DEPARTMENT OF TRANSPORTATION**

**NORTHVIEW ELEMENTARY SCHOOL**  
**REMOVAL PLAN**

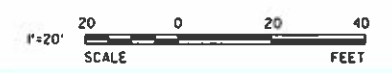
F.A. RTE	SECTION	COUNTY	TOTAL SHEETS	SHEET NO
	19-0011-00-BT	CHAMPAIGN	10	7
			CONTRACT NO 91588	
ILLINOIS FEDERAL AID PROJECT				



PRINTED DATE: 4/2/2020  
 FILE NAME: N:\Projects\Burlington Village of\19-791 Northview Elementary SR15\CA00\CAD\CADD\Sheets\791\_87\_pvm.dgn



FOR THE ILLINOIS DRIVE CROSSING SEE INSET




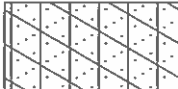
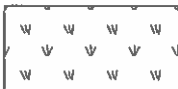
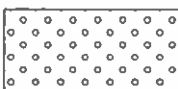
USER NAME • IOOF V01	DESIGNED - PS	REVISED -
PLOT SCALE • #SCALE#	DRAWN - PS	REVISED -
PLOT DATE • 4/2/2020	CHECKED - DC	REVISED -
	DATE -	REVISED -

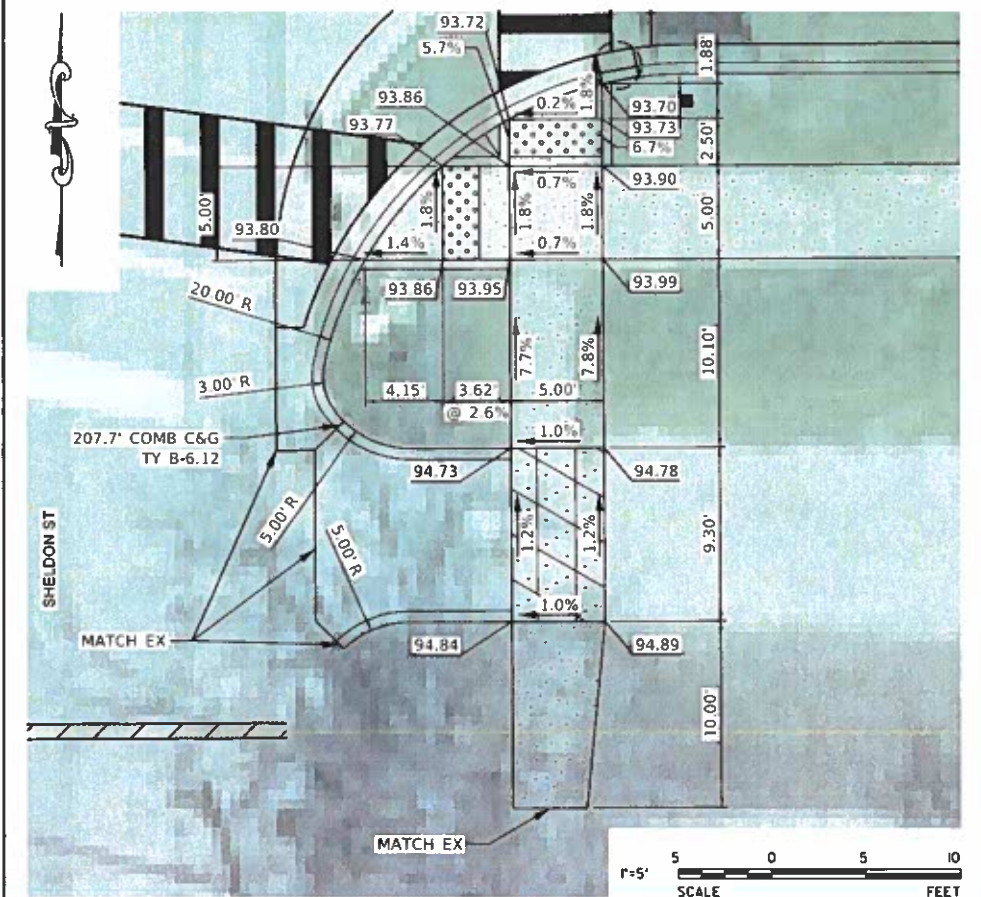
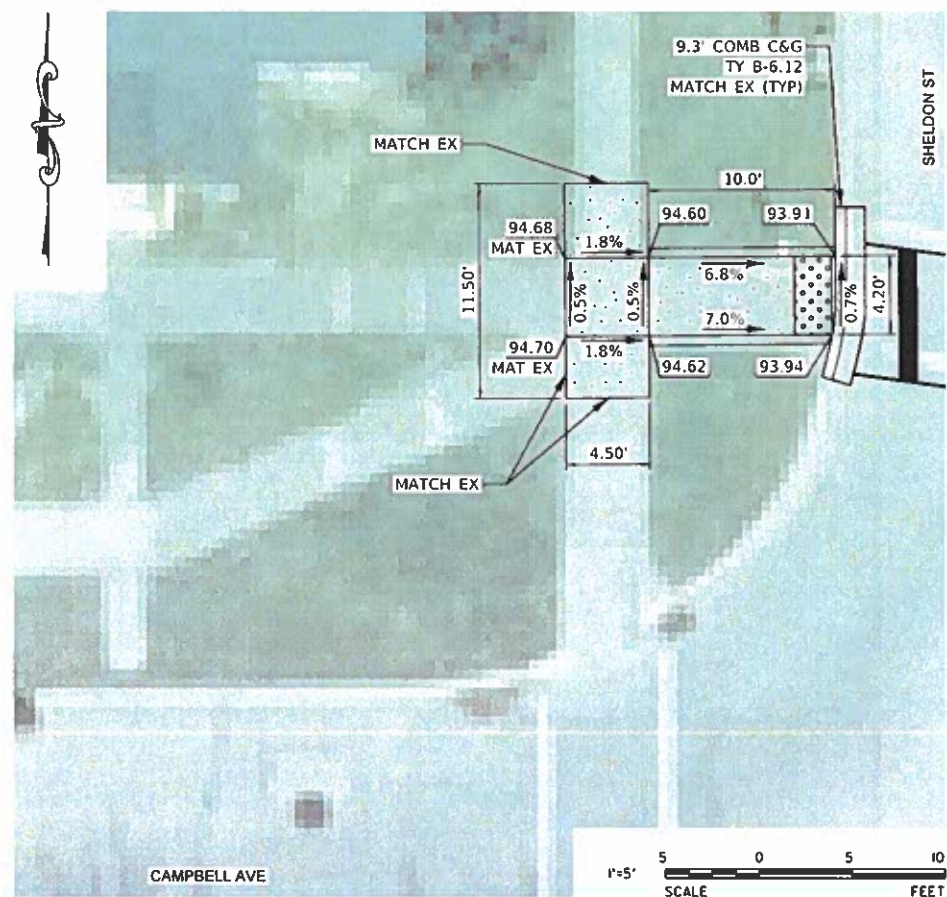
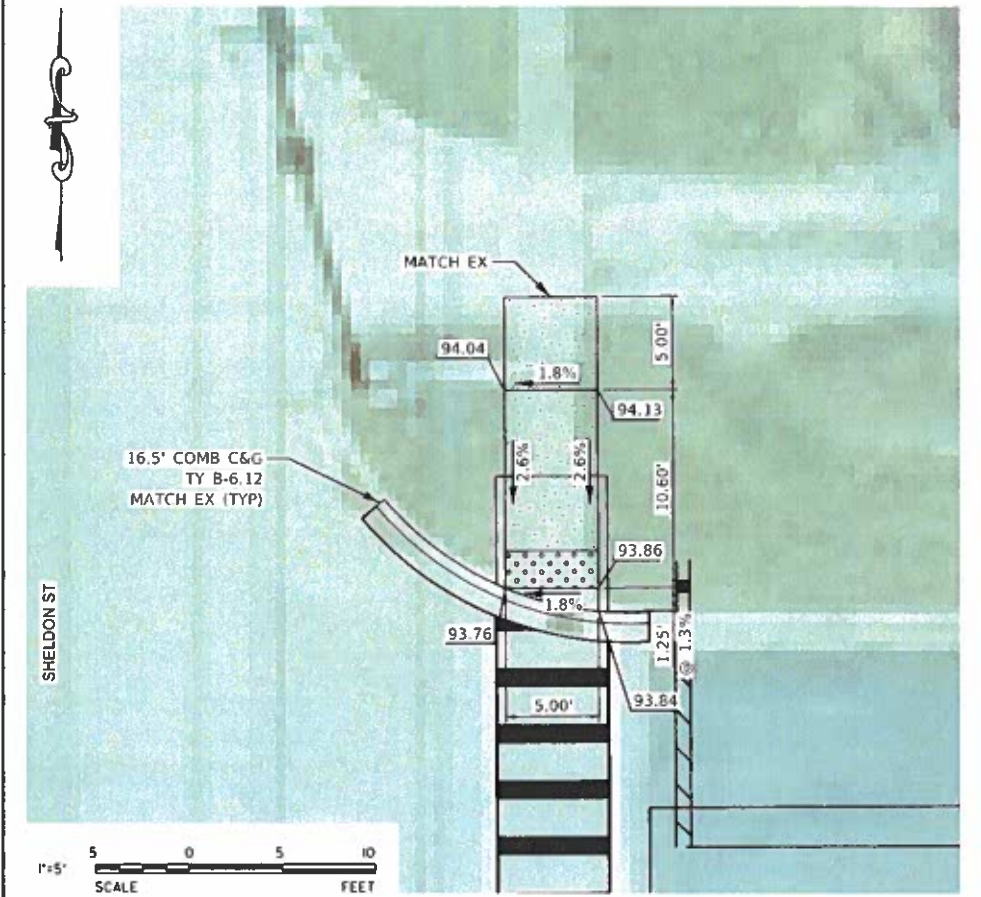
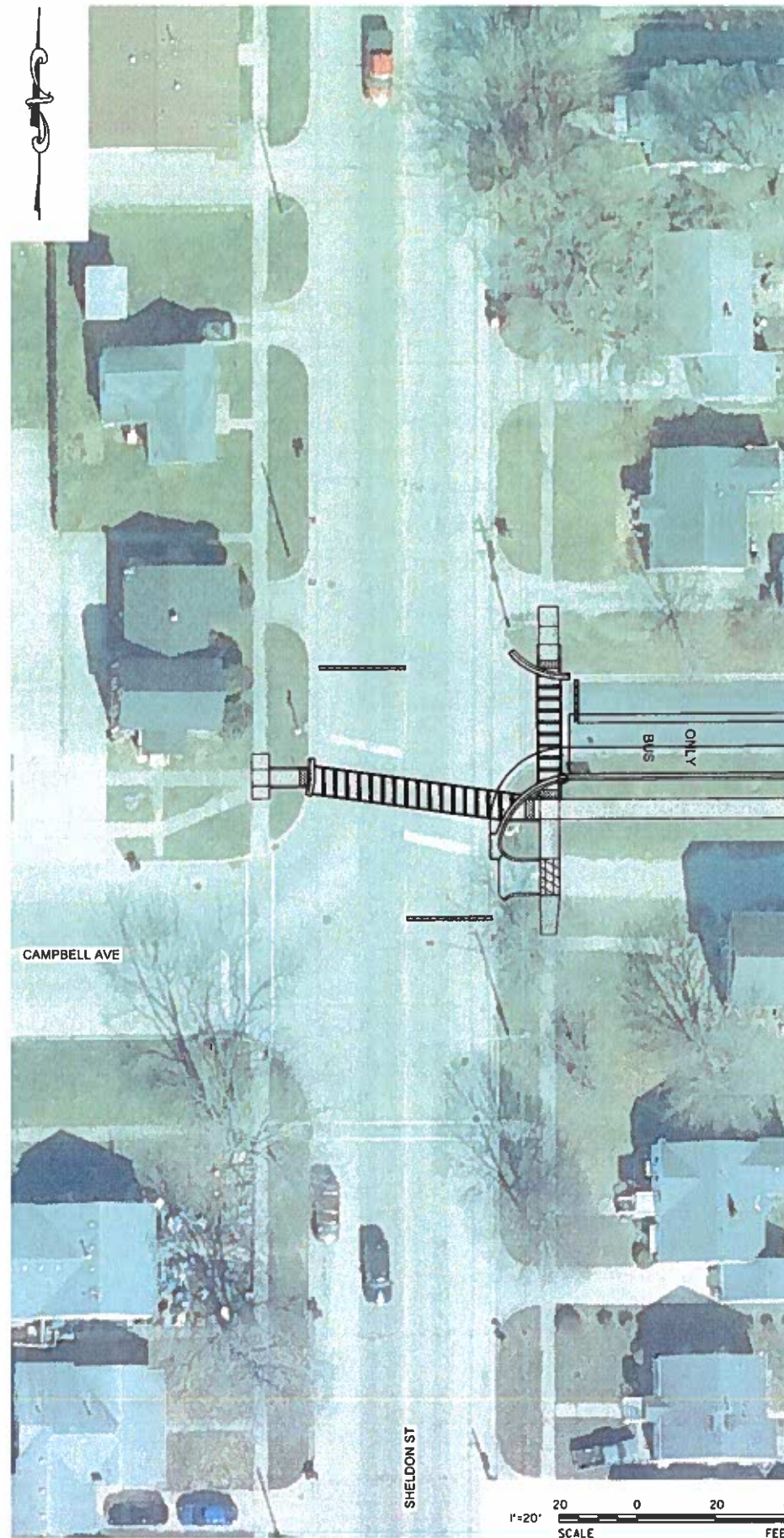
STATE OF ILLINOIS  
 DEPARTMENT OF TRANSPORTATION

NORTHVIEW ELEMENTARY SCHOOL  
 PAVEMENT MARKING PLAN

F.A. RTE	SECTION	COUNTY	TOTAL SHEETS	SHEET NO
	19-00111-00-BT	CHAMPAIGN	10	8
			CONTRACT NO 91588	
ILLINOIS FEDERAL AID PROJECT				



-  PCC SIDEWALK 4"
-  PCC SIDEWALK 6"
-  TOPSOIL & SEEDING
-  DETECTABLE WARNING



PRINTED DATE: 9/2/2028  
 FILE NAME: N:\Projects\Roadwork\11\19-1791 Northview Elementary BR15\CADD\Civil\CADD\_Sheets\791\_88\_Sheldon and Campbell.dgn



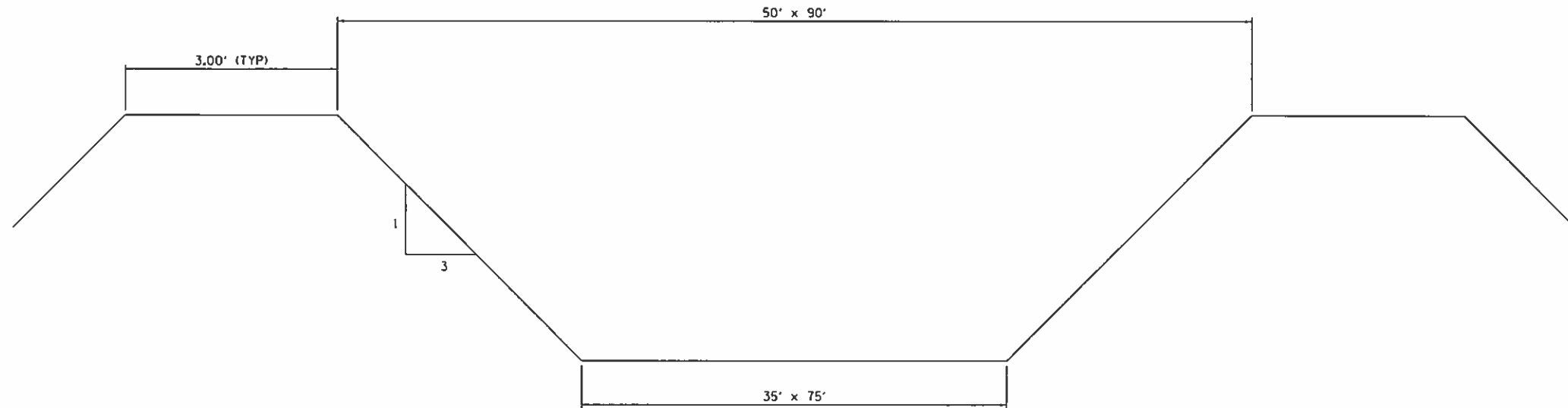
USER NAME = IDOT.VB.	DESIGNED - PS	REVISED -
PLOT SCALE = 1/8"=1'-0"	DRAWN - PS	REVISED -
PLOT DATE = 9/2/2028	CHECKED - DC	REVISED -
	DATE -	REVISED -

**STATE OF ILLINOIS**  
**DEPARTMENT OF TRANSPORTATION**

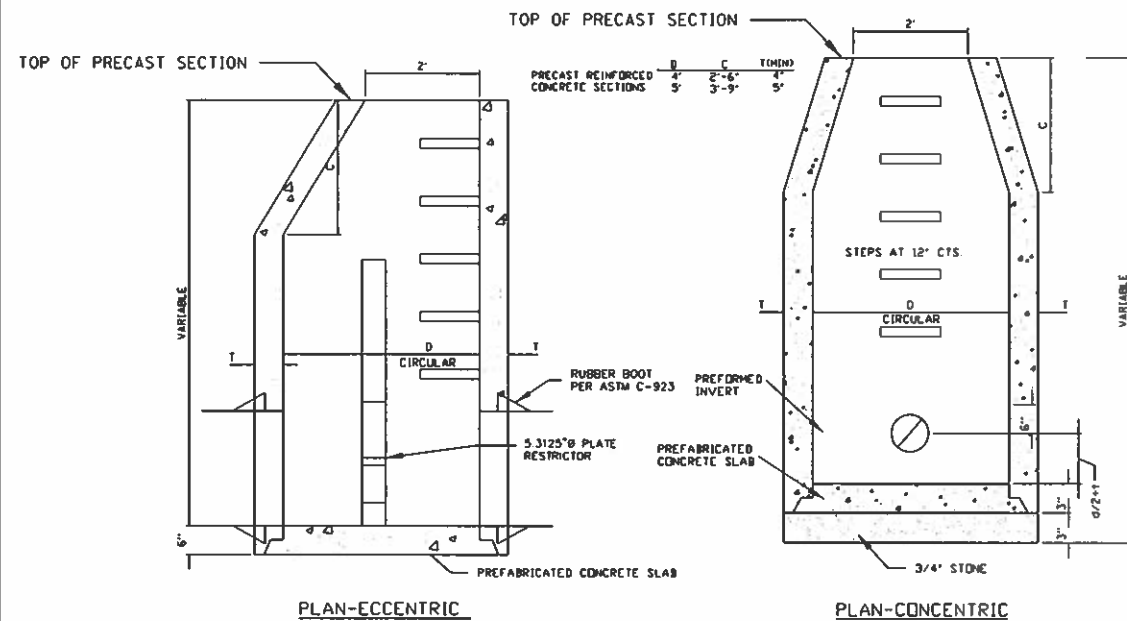
**NORTHVIEW ELEMENTARY SCHOOL**  
**CURB RAMP DETAILS**

F.A. RTE	SECTION	COUNTY	TOTAL SHEETS	SHEET NO
	19-0011-00-BT	CHAMPAIGN	10	9
CONTRACT NO 91588				
ILLINOIS FEDERAL AID PROJECT				



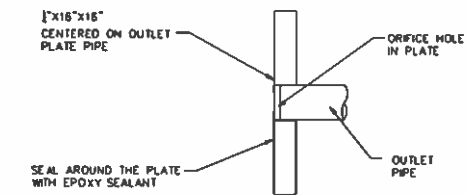


**TYPICAL SECTION DETENTION BASIN**

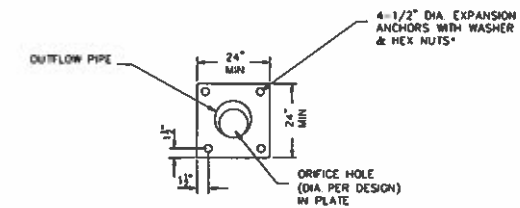


**RESTRICTOR MANHOLE**  
NOT TO SCALE

**NOTES:**  
 DIMENSION "C" FOR PRECAST REINFORCED CONCRETE SECTIONS MAY VARY FROM THE DIMENSION GIVEN TO PLUS 6 INCHES. THE CAST IRON STEPS AS DETAILED HERE ON ARE TYPICAL. STEPS OF OTHER DESIGN AND MATERIAL THAT WILL CONFORM TO THE MINIMUM REQUIREMENTS OF THE STEPS SHOWN, MAY BE USED WHEN APPROVED BY THE ENGINEER. CAST IRON STEPS SHALL BE GRAY IRON CONFORMING TO THE REQUIREMENTS OF ART. 710.17 OF THE STANDARD SPECIFICATIONS STEPS SHALL BE EMBEDDED INTO THE WALL A MINIMUM OF 3 INCHES. STEPS SHALL NOT BE EXTENDED ON THE OUTSIDE.  
 \*WATERTIGHT CONNECTION CONFORMING TO ASTM C-923 BETWEEN STRUCTURE AND PIPE



**PLATE RESTRICTOR DETAIL SECTION**



**PLATE RESTRICTOR DETAIL ELEVATION**

\*ANCHORS SHALL BE TACK WELDED TO THE PLATE. ANCHOR EMBEDMENT SHALL BE 3" MIN.

**RESTRICTOR PLATE DETAIL**  
NOT TO SCALE

PRINTED DATE: 9/2/2028  
 FILE NAME: N:\Projects\19-00111\19-00111-00-BT\19-00111-00-BT.dwg



USER NAME : 100T V8	DESIGNED - PS	REVISED -
PLOT SCALE : 1/8"=1'-0"	DRAWN - PS	REVISED -
PLOT DATE : 9/2/2028	CHECKED - DC	REVISED -
	DATE -	REVISED -

**STATE OF ILLINOIS  
DEPARTMENT OF TRANSPORTATION**

**DETAILS**

F.A.R.T.E.	SECTION	COUNTY	TOTAL SHEETS	SHEET NO
	19-00111-00-BT	CHAMPAIGN	10	10
CONTRACT NO 91588				
ILLINOIS FEDERAL AID PROJECT				