

LONGITUDINAL JOINT CLOSURE PLAN

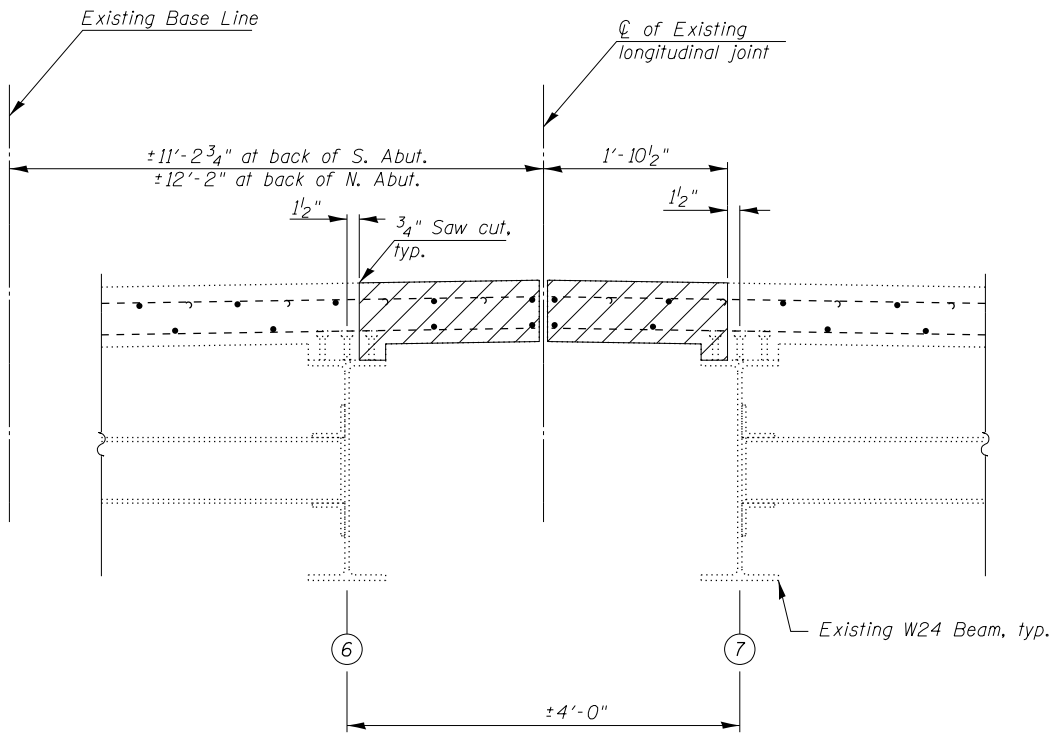
NOTES

Hatched areas indicate concrete sections to be removed. Perimeters of Concrete Removal areas shall be saw cut 3/4" prior to the removal of the concrete. Existing transverse reinforcement shall be cleaned, straightened and incorporated into the new construction. New reinforcement bars shall be epoxy coated.

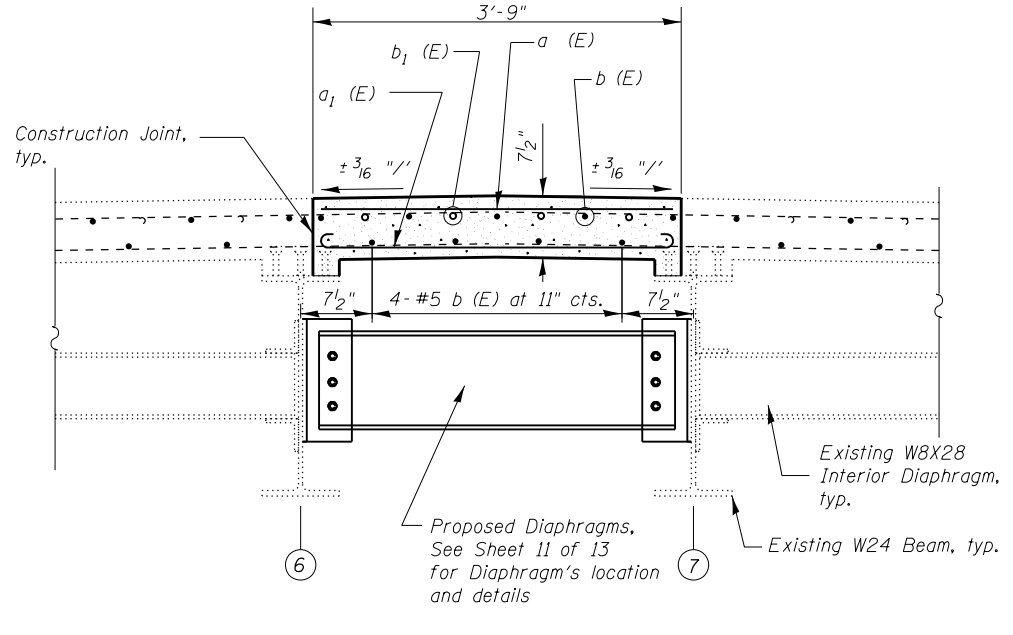
Bars indicated thus 4x2 #6 etc. indicates 4 lines of bars with 2 lengths per line

MINIMUM BAR LAP

SIZE	BAR LAP
# 4	2'-4"
# 5	2'-11"



SECTION A-A (EXISTING)
(Looking North)



SECTION A-A (PROPOSED)
(Looking North)

DESIGNED RAD	EXAMINED	DATE
CHECKED RB	ENGINEER OF STRUCTURAL SERVICES	
DRAWN RAD	PASSED	REVISOR
CHECKED JAM	ENGINEER OF BRIDGES AND STRUCTURES	REVISOR

STATE OF ILLINOIS
DEPARTMENT OF TRANSPORTATION

IL RTE 83 AT SALT CREEK
LONGITUDINAL JOINT CLOSURE DETAILS (S.N. 022-0045)

F.A.P. RTE.	SECTION	COUNTY	TOTAL SHEETS	SHEET NO.
344	543-X-B-1-2	DUPAGE	31	6
			CONTRACT NO. 60T76	
ILLINOIS FED. AID PROJECT				