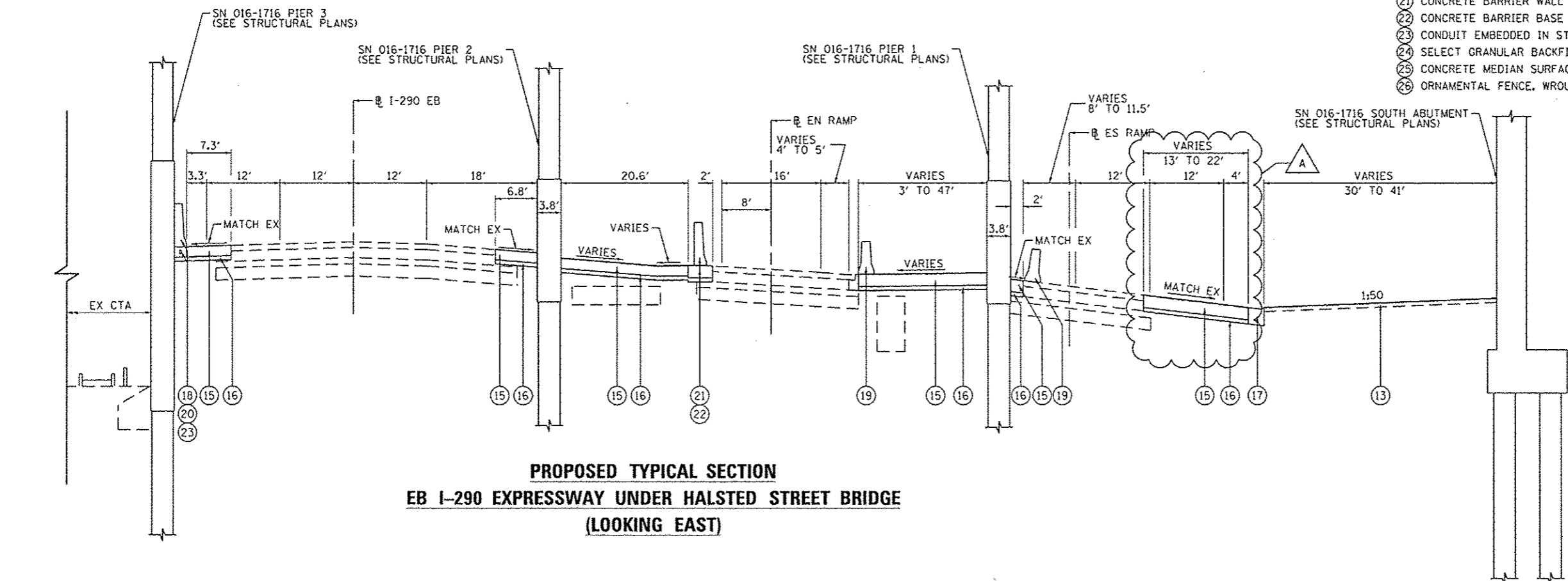


**PROPOSED TYPICAL SECTION
WB I-290 EXPRESSWAY UNDER HALSTED STREET BRIDGE
(LOOKING EAST)**

- EXISTING**
- (A) HOT-MIX ASPHALT PAVEMENT, 5 1/2" - 5 3/4"
 - (B) PORTLAND CEMENT CONCRETE PAVEMENT, 10"
 - (C) GRANULAR SUB-BASE, 6"
 - (D) PREPARED SUBGRADE, 12"
 - (E) CONCRETE CURB AND GUTTER
 - (F) HOT-MIX ASPHALT SHOULDER, 10"
 - (G) CONCRETE BARRIER
- PROPOSED**
- (1) HOT-MIX ASPHALT SURFACE COURSE, MIX "D", N70, 1 3/4"
 - (2) HOT-MIX ASPHALT BINDER COURSE, IL-19.0, N70, 2 1/4"
 - (3) PAVEMENT FABRIC
 - (4) PORTLAND CEMENT CONCRETE BASE COURSE, 9"
 - (5) BITUMINOUS MATERIALS (PRIME COAT)
 - (6) AGGREGATE (PRIME COAT)
 - (7) SUB-BASE GRANULAR MATERIAL, TYPE B, 6"
 - (8) COMBINATION CURB AND GUTTER TYPE B V.12 (CDOT)
 - (9) PORTLAND CEMENT CONCRETE SIDEWALK (SEE PLAN & PROFILE SHEETS FOR DEPTHS)
 - (10) SAND CUSHION, 4 INCH, (CDOT)
 - (11) #5 TIE BARS, 30" LONG AT 30" C-C (LONGITUDINAL CONSTRUCTION JOINT) (INCLUDED IN PRICE FOR BID FOR PCC BASE COURSE)
 - (12) #5 TIE BARS, 30" LONG AT 30" C-C (INCLUDED IN PRICE FOR BID FOR CURB AND GUTTER)
 - (13) TOPSOIL FURNISH AND PLACE, 4"
 - (14) CONCRETE MEDIAN (SPECIAL)
 - (15) TEMPORARY PAVEMENT (SEE TYPICAL SHT 6 FOR DETAILS)
 - (16) SUB-BASE GRANULAR MATERIAL, TYPE B, 4"
 - (17) COMBINATION CONCRETE CURB AND GUTTER, TYPE B-6.24
 - (18) CONCRETE BARRIER, SINGLE FACE, 42 INCH HEIGHT
 - (19) TEMPORARY CONCRETE BARRIER (FURNISH AND INSTALL), TO REMAIN IN PLACE
 - (20) CONCRETE BARRIER BASE
 - (21) CONCRETE BARRIER WALL (SPECIAL)
 - (22) CONCRETE BARRIER BASE (SPECIAL)
 - (23) CONDUIT EMBEDDED IN STRUCTURE, 4" DIA., PVC
 - (24) SELECT GRANULAR BACKFILL, SPECIAL
 - (25) CONCRETE MEDIAN SURFACE, 4 INCH
 - (26) ORNAMENTAL FENCE, WROUGHT IRON

- NOTES:**
1. AS INDICATED ON THE ROADWAY PLANS, TYPICALLY AT LEAST 6' (4' MIN) OF PROPOSED SIDEWALK WIDTH MUST HAVE A CROSS SLOPE OF 1:64 OR LESS.
 2. TYPICAL LOCAL ROADWAY CROSS SLOPE VARIES BETWEEN 1.4% AND 3.6% AS INDICATED ON THE PLANS. SEE ROADWAY AND GRADING PLAN DETAILS FOR ROADWAY SLOPE TRANSITIONS.
 3. PCC BASE COURSE SHALL HAVE TRANSVERSE CONTRACTION JOINTS AT A 20' MAXIMUM SPACING. (INCLUDED IN PRICE FOR BID FOR PCC BASE COURSE)



**PROPOSED TYPICAL SECTION
EB I-290 EXPRESSWAY UNDER HALSTED STREET BRIDGE
(LOOKING EAST)**

FILE PATH: \\na\136633\p\int\l\eccon\line\local\16464208\Documents\101_AmericanT\transportation\62619538_Cur\1\Phase_1\1802_650\186_Roadway\Sheets\60W26-shr-typical-EB.dgn

	0160W26-shr-typical-EB.dgn	DESIGNED - JLV	REVISED - A 10/15/2013	STATE OF ILLINOIS DEPARTMENT OF TRANSPORTATION	TYPICAL SECTIONS I-290	F.A.I. RTE.	SECTION	COUNTY	TOTAL SHEETS	SHEET NO.
	USER NAME = BAW\jlv	DRAWN - SED	REVISED -			90/94/290	2013-00BR	COOK	559	30
	PLOT SCALE = 1/8" = 1'-0"	CHECKED - JMG	REVISED -			CONTRACT NO. 60W26				
	PLOT DATE = 10/14/2013	DATE - 9/15/13	REVISED -			ILLINOIS FED. AID PROJECT				
SCALE: NTS						SHEET 3 OF 6 SHEETS		STA. TO STA.		