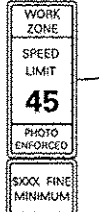
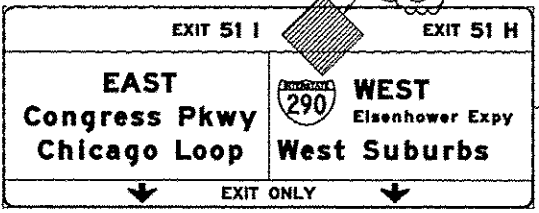
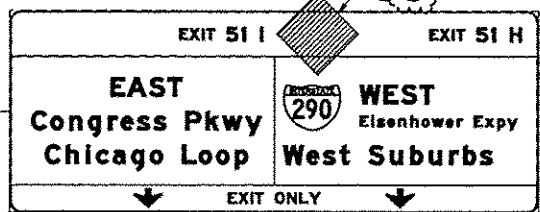
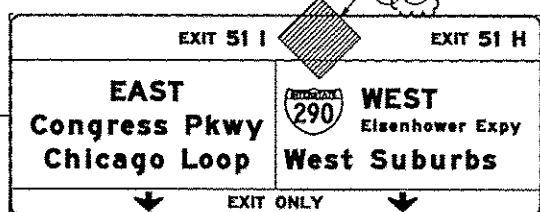
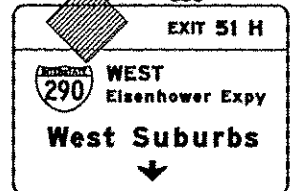
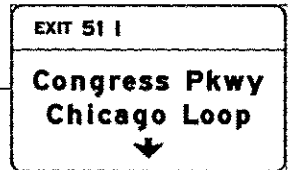
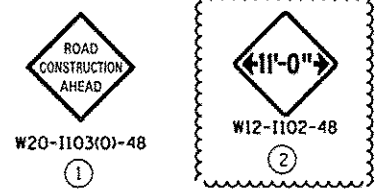
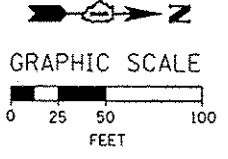
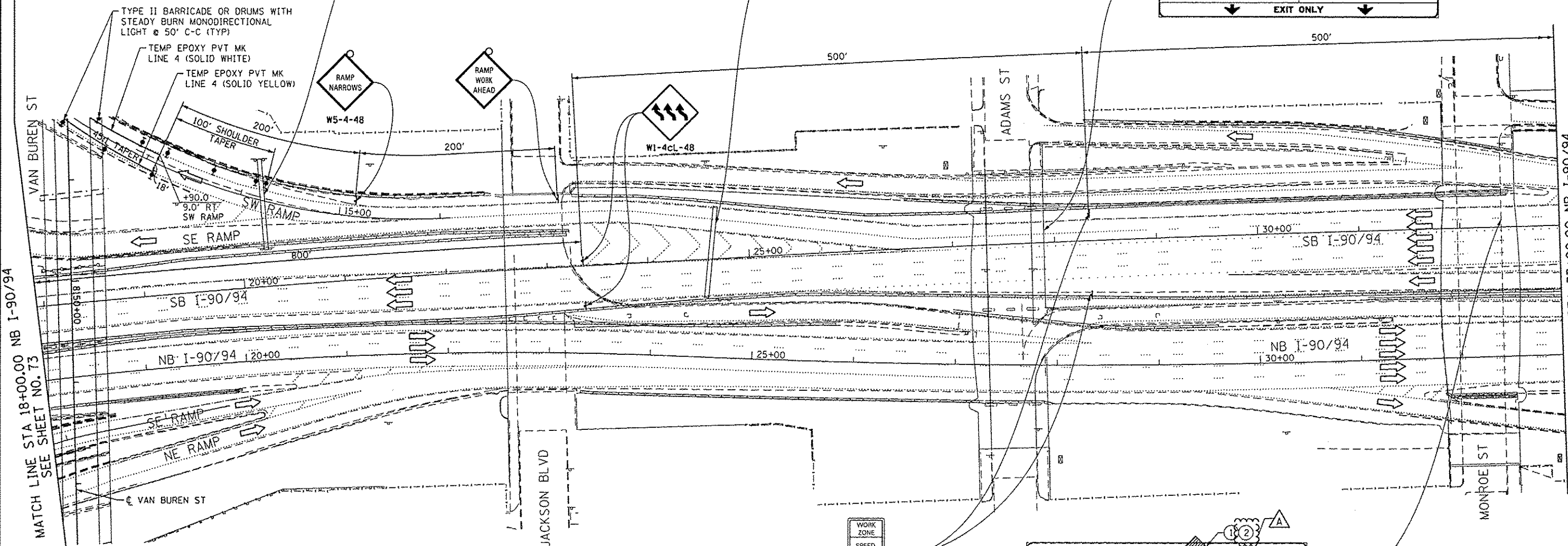


- NOTE:
- UNLESS NOTED OTHERWISE, ALL STATIONS AND OFFSETS USED ARE TAKEN FROM EXISTING NB AND SB I-90/94 BASELINES.
 - FOR LEGEND SEE SHEET NO. 65



W2-1115(0)-3618
R2-1-3648
R10-19aP-3618
R2-1106-3618



MATCH LINE STA 18+00.00 NB I-90/94 SEE SHEET NO. 73

MATCH LINE STA 33+00.00 NB I-90/94 SEE SHEET NO. 78

	DISB26-Sht-Staging1A-ML-07	DESIGNED - OPS	REVISED - 10/15/2013	STATE OF ILLINOIS DEPARTMENT OF TRANSPORTATION	SUGGESTED STAGES OF CONSTRUCTION AND TRAFFIC CONTROL PLAN MAINLINE STAGING 1A			F.A.I. RTE.	SECTION	COUNTY	TOTAL SHEETS	SHEET NO.
	USER NAME = PIMSARNO	DRAWN - PHP	REVISED -					90/94/290	2013-00BR	COOK	559	77
	PLOT SCALE = 50.0000' / in	CHECKED - DBM	REVISED -					CONTRACT NO. 60W26				
	PLOT DATE = 10/15/2013	DATE - 9/15/13	REVISED -					ILLINOIS FED. AID PROJECT				
SCALE: 1" = 50'					SHEET 7 OF 8 SHEETS STA. TO STA.							