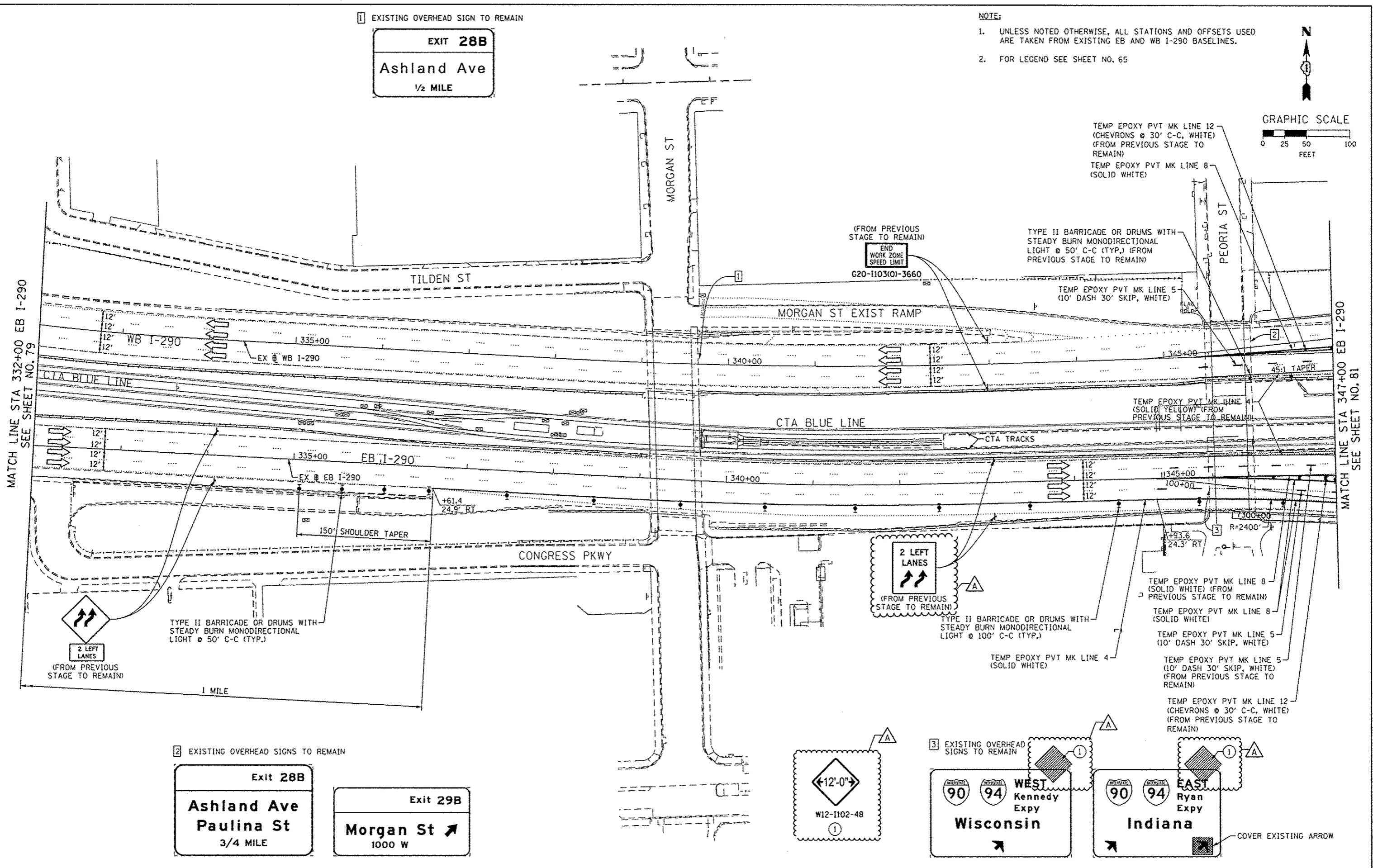
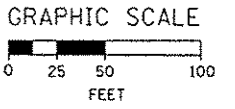


1 EXISTING OVERHEAD SIGN TO REMAIN

EXIT 28B
Ashland Ave
1/2 MILE

NOTE:

- UNLESS NOTED OTHERWISE, ALL STATIONS AND OFFSETS USED ARE TAKEN FROM EXISTING EB AND WB I-290 BASELINES.
- FOR LEGEND SEE SHEET NO. 65



MATCH LINE STA 332+00 EB I-290
SEE SHEET NO. 79

MATCH LINE STA 347+00 EB I-290
SEE SHEET NO. 81

2 EXISTING OVERHEAD SIGNS TO REMAIN

Exit 28B
Ashland Ave
Paulina St
3/4 MILE

Exit 29B
Morgan St
1000 W

12'-0"
W12-1102-48

3 EXISTING OVERHEAD SIGNS TO REMAIN
WEST Kennedy Expy
Wisconsin

1 EXISTING OVERHEAD SIGN TO REMAIN
EAST Ryan Expy
Indiana

COVER EXISTING ARROW



0160426-Sht-Staging18-ML-02
USER NAME = PIMSARNO
PLOT SCALE = 50.0000 1/16"
PLOT DATE = 10/15/2013

DESIGNED - OPS	REVISED - 10/15/2013
DRAWN - PHP	REVISED -
CHECKED - DBM	REVISED -
DATE - 9/15/13	REVISED -

STATE OF ILLINOIS
DEPARTMENT OF TRANSPORTATION

SUGGESTED STAGES OF CONSTRUCTION AND TRAFFIC CONTROL PLAN
MAINLINE STAGING 1B
SCALE: 1" = 50' SHEET 2 OF 8 SHEETS STA. TO STA.

F.A.I. RTE.	SECTION	COUNTY	TOTAL SHEETS	SHEET NO.
90/94/290	2013-008R	COOK	559	80
CONTRACT NO. 60W26				
ILLINOIS FED. AID PROJECT				