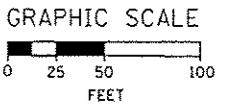


1 EXISTING OVERHEAD SIGN TO REMAIN

EXIT 28B
Ashland Ave
1/2 MILE

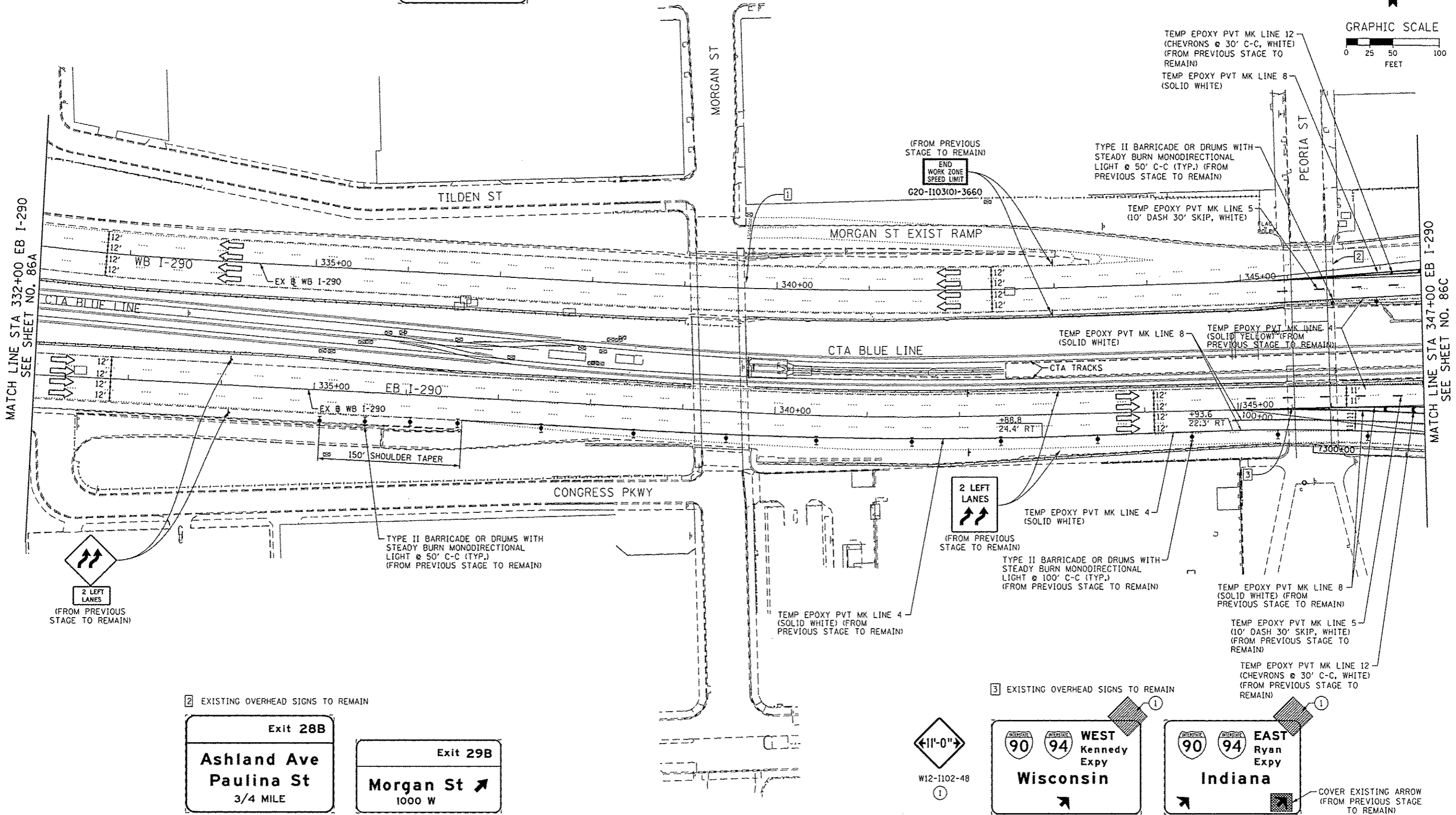
NOTE:

- UNLESS NOTED OTHERWISE, ALL STATIONS AND OFFSETS USED ARE TAKEN FROM EXISTING EB AND WB I-290 BASELINES.
- FOR LEGEND SEE SHEET NO. 65



MATCH LINE STA 332+00 EB I-290
SEE SHEET NO. 86A

MATCH LINE STA 347+00 EB I-290
SEE SHEET NO. 86C



2 EXISTING OVERHEAD SIGNS TO REMAIN

Exit 28B
Ashland Ave
Paulina St
3/4 MILE

Exit 29B
Morgan St
1000 W

3 EXISTING OVERHEAD SIGNS TO REMAIN

11'-0"
W12-1102-48

WEST Kennedy Expy
Wisconsin

EAST Ryan Expy
Indiana

COVER EXISTING ARROW (FROM PREVIOUS STAGE TO REMAIN)



DESIGNED - OPS	REVISOR - A 10/15/2013
DRAWN - OPS	REVISION -
CHECKED - DBM	REVISION -
DATE - 9/15/13	REVISION -

USER NAME = p1303rno
PLOT SCALE = 50.0000' / 1" =
PLOT DATE = 10/14/2013

STATE OF ILLINOIS
DEPARTMENT OF TRANSPORTATION

SUGGESTED STAGES OF CONSTRUCTION AND TRAFFIC CONTROL PLAN
MAINLINE STAGING 1B-1
SCALE: 1" = 50' SHEET 2 OF 3 SHEETS STA. TO STA.

F.A.I. RTE.	SECTION	COUNTY	TOTAL SHEETS	SHEET NO.
90/94/290	2013-008R	COOK	559	868
CONTRACT NO. 60W26				

FILE PATH = p:\11388239\print\lancolnline\lancol\p\11388239\Documents\11388239\Transportation\60W26\Contract\11388239\1B-1.dgn