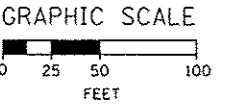


1 EXISTING OVERHEAD SIGN TO REMAIN

EXIT 28B  
Ashland Ave  
1/2 MILE

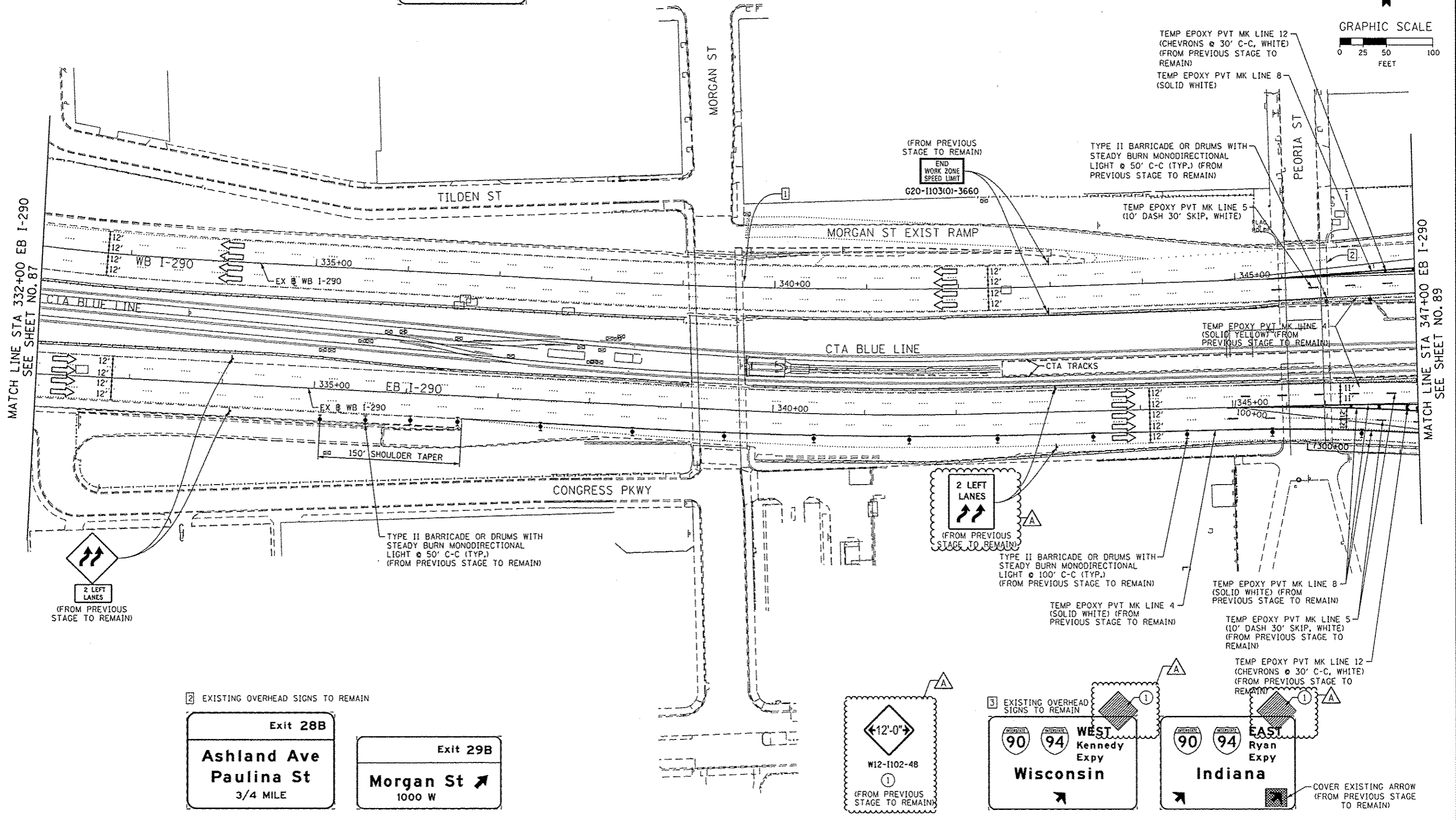
NOTE:

- UNLESS NOTED OTHERWISE, ALL STATIONS AND OFFSETS USED ARE TAKEN FROM EXISTING EB AND WB I-290 BASELINES.
- FOR LEGEND SEE SHEET NO. 65



MATCH LINE STA 332+00 EB I-290  
SEE SHEET NO. 87

MATCH LINE STA 347+00 EB I-290  
SEE SHEET NO. 89



2 EXISTING OVERHEAD SIGNS TO REMAIN

Exit 28B  
Ashland Ave  
Paulina St  
3/4 MILE

Exit 29B  
Morgan St  
1000 W

12'-0"  
W12-1102-48  
1  
(FROM PREVIOUS STAGE TO REMAIN)

3 EXISTING OVERHEAD SIGNS TO REMAIN  
WEST Kennedy Expy  
Wisconsin

1 EXISTING OVERHEAD SIGN TO REMAIN  
EAST Ryan Expy  
Indiana

COVER EXISTING ARROW (FROM PREVIOUS STAGE TO REMAIN)

	DESIGNED - OPS	REVISED - 10/15/2013
	DRAWN - PHP	REVISED -
	CHECKED - DBM	REVISED -
	DATE - 9/15/13	REVISED -

STATE OF ILLINOIS  
DEPARTMENT OF TRANSPORTATION

SUGGESTED STAGES OF CONSTRUCTION AND TRAFFIC CONTROL PLAN	
MAINLINE STAGING 2A	
SCALE: 1" = 50'	SHEET 2 OF 6 SHEETS

F.A.I. RTE.	SECTION	COUNTY	TOTAL SHEETS	SHEET NO.
90/94/290	2013-008R	COOK	559	88
CONTRACT NO. 60W26				
[ILLINOIS] FED. AID PROJECT				