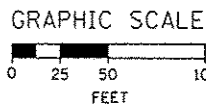


1 EXISTING OVERHEAD SIGN TO REMAIN

EXIT 28B
Ashland Ave
1/2 MILE

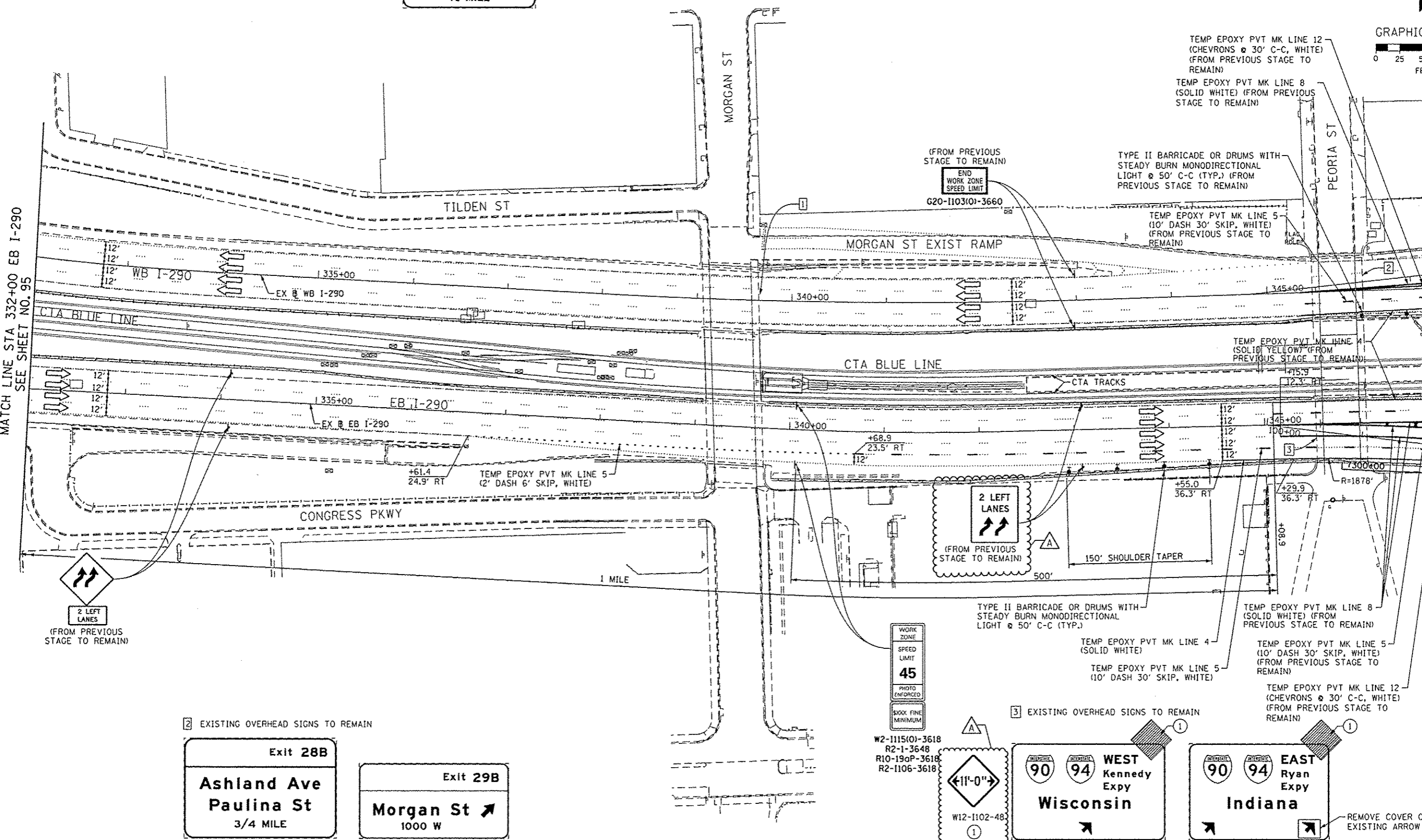
NOTE:

- UNLESS NOTED OTHERWISE, ALL STATIONS AND OFFSETS USED ARE TAKEN FROM EXISTING EB AND WB I-290 BASELINES.
- FOR LEGEND SEE SHEET NO. 65



MATCH LINE STA 332+00 EB I-290
SEE SHEET NO. 95

MATCH LINE STA 347+00 EB I-290
SEE SHEET NO. 97



2 EXISTING OVERHEAD SIGNS TO REMAIN

Exit 28B
Ashland Ave
Paulina St
3/4 MILE

Exit 29B
Morgan St
1000 W

WORK ZONE
SPEED LIMIT
45
PHOTO ENFORCED
6000 FINE MINIMUM

3 EXISTING OVERHEAD SIGNS TO REMAIN

W2-1115(0)-3618
R2-1-3648
R10-19aP-3618
R2-1106-3618

W12-1102-48

WEST Kennedy Expy
Wisconsin

EAST Ryan Expy
Indiana

REMOVE COVER ON EXISTING ARROW