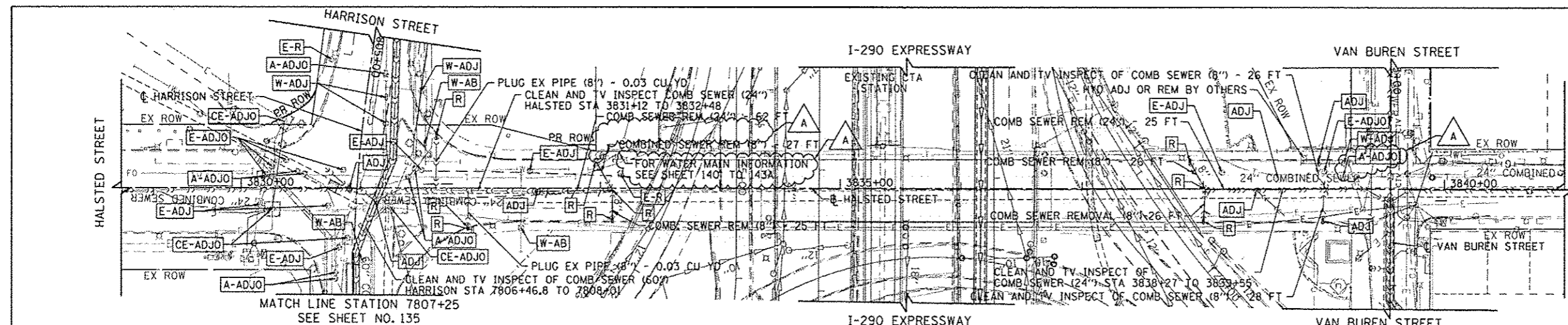


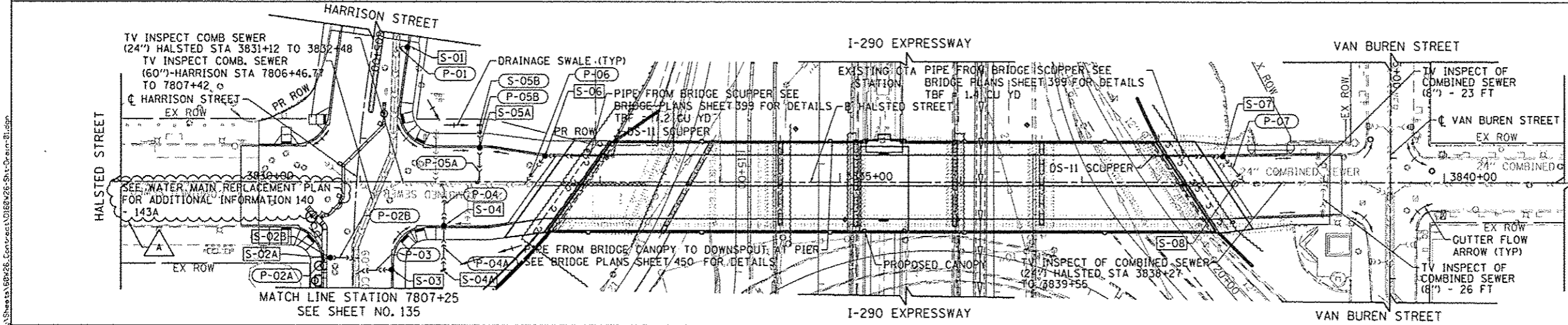
DATE	
BY	
REVISIONS	
NO.	
DATE	
BY	
REVISIONS	
NO.	
DATE	
BY	
REVISIONS	
NO.	

DATE	
BY	
REVISIONS	
NO.	
DATE	
BY	
REVISIONS	
NO.	
DATE	
BY	
REVISIONS	
NO.	

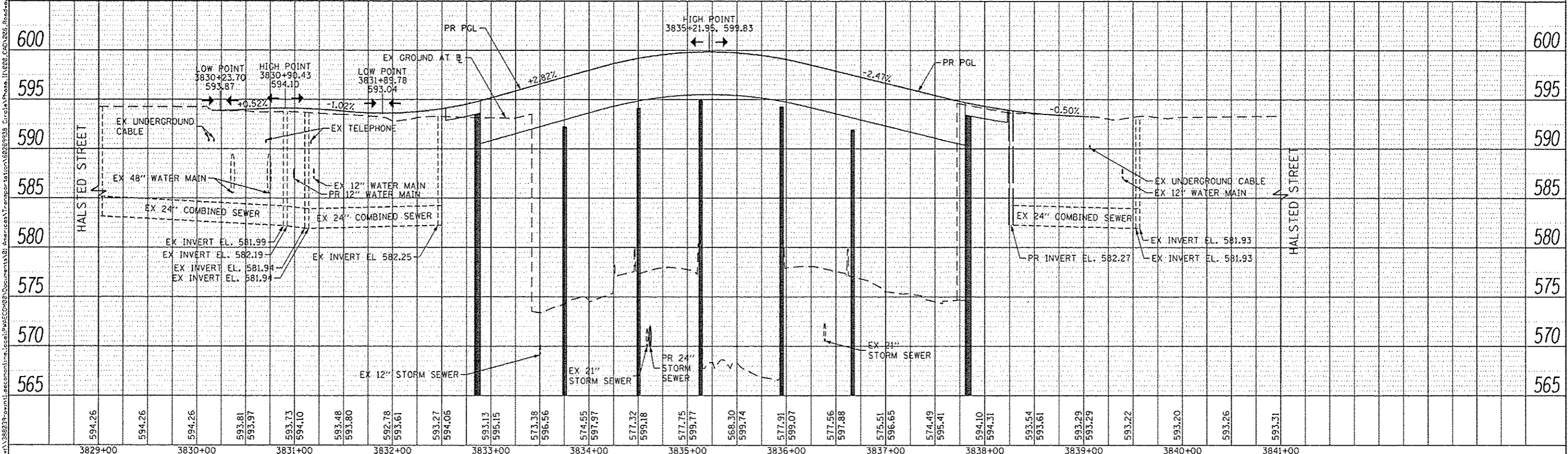
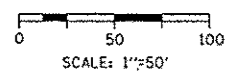


ADJUSTMENT AND REMOVAL LEGEND

A-ADJO	ATT ADJUST BY OTHERS
CE-ADJO	COMED ADJUST BY OTHERS
E-ADJ	CITY ELECTRIC ADJUST
E-R	CITY ELECTRIC REMOVE
W-ADJ	CITY WATER ADJUST
W-AB	CITY WATER ABANDON
ADJ	ADJUST BY CONTRACTOR
R	REMOVAL BY CONTRACTOR



- ### NOTES:
- REFER TO DRAWINGS 38 TO 43 FOR DRAINAGE STRUCTURE AND PIPE SCHEDULES.
 - SEE SHEET 131 TO 134 FOR I-290 DRAINAGE AND REMOVALS.
 - SEE STRUCTURAL SHEETS FOR DS-11 SCUPPER DETAILS.
 - SEE SHEETS 140 THROUGH 143A FOR ADDITIONAL WATER MAIN INFORMATION.



D:\50426-Sht-D-13-11.dgn	DESIGNED - JSL	REVISED - A 10/15/2013
USER NAME = BAW	DRAWN - BAW	REVISED -
PLOT SCALE = 5/8"=1'-0"	CHECKED - JWC	REVISED -
PLOT DATE = 10/14/2013	DATE = 9/15/13	REVISED -

STATE OF ILLINOIS
DEPARTMENT OF TRANSPORTATION

DRAINAGE AND UTILITY PLAN AND PROFILE			
HALSTED STREET			
SCALE: 1"=50'	SHEET 1	OF 10 SHEETS	STA. 3829+00 TO STA. 3841+00

F.A.I. RTE. 90/94/290	SECTION 2013-008R	COUNTY COOK	TOTAL SHEETS 559	SHEET NO. 130
CONTRACT NO. 60W26				ILLINOIS FED. AID PROJECT