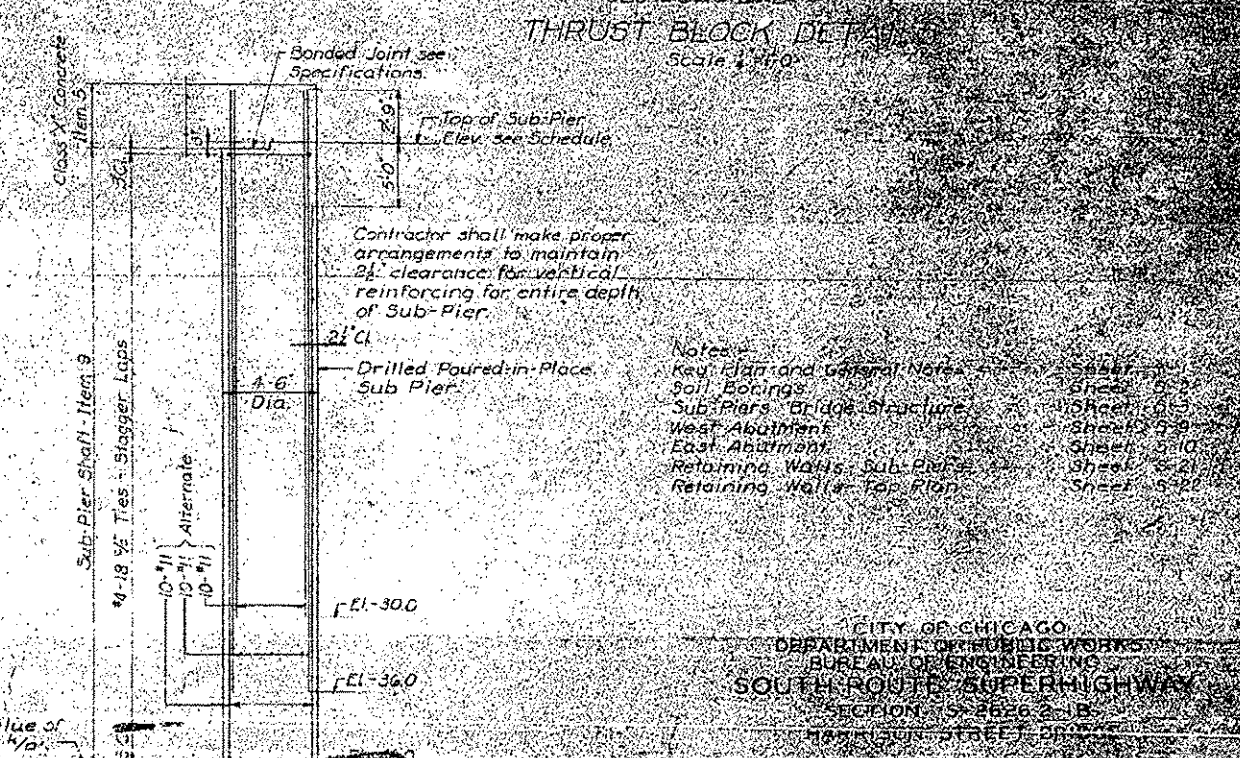
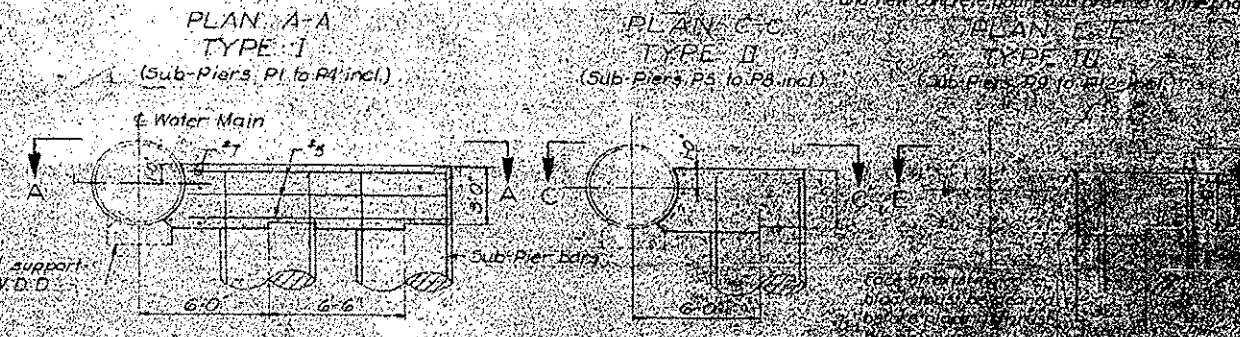
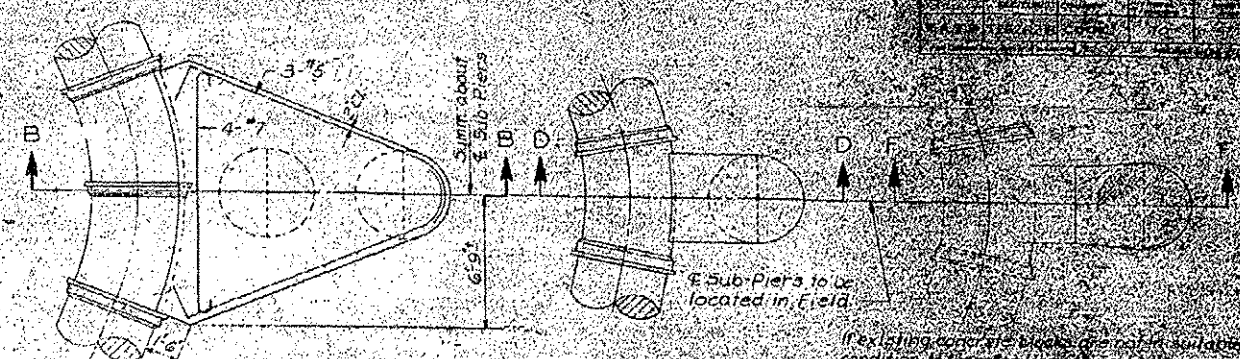


| Sub Pier No. | Elevation of Water Main | Elev. Top of Sub Pier |
|--------------|-------------------------|-----------------------|
| P1 & P2      | +8.0                    | +7.5                  |
| P3 & P4      | +8.0                    | +7.0                  |
| P5           | +9.0                    | +7.0                  |
| P6           | +9.0                    | +7.0                  |
| P7           | +9.0                    | +7.0                  |
| P8           | +9.0                    | +7.0                  |
| P9           | +6.5                    | +4.5                  |
| P10          | +7.5                    | +5.5                  |
| P11          | +8.5                    | +6.5                  |
| P12          | +9.5                    | +7.5                  |



- Notes:
- Key Plan and General Notes
  - Soil Borings
  - Sub-Piers Bridge Structure
  - West Abutment
  - East Abutment
  - Retaining Walls Sub-Piers
  - Retaining Walls Top Plan

CITY OF CHICAGO  
 DEPARTMENT OF PUBLIC WORKS  
 BUREAU OF ENGINEERING  
 SOUTH ROUTE SUPERHIGHWAY  
 SECTION 5-2526 & B  
 HARD SURFACE DRIVE BRIDGE

LATERAL SUPPORTS FOR  
 SUB-PIER  
 P1 TO P12 INCL.  
 SCALE AS NOTED  
 SHEET NO. 21 OF 20 SHEETS

CHECKED BY: [Signature]  
 APPROVED BY: [Signature]

**AECOM**  
 303 EAST WACKER DRIVE, SUITE 1400  
 CHICAGO, IL 60601-3278  
 PHONE (312) 373-7700 FAX (312) 373-6800

DESIGNED - HHC  
 DRAWN - HHC  
 CHECKED - RBB  
 DATE - 9/15/13

REVISED - 10/24/2013  
 REVISED -  
 REVISED -  
 REVISED -

STATE OF ILLINOIS  
 DEPARTMENT OF TRANSPORTATION

WATER MAIN RECORD INFORMATION

SCALE: SHEET OF SHEETS STA. TO STA.

| F.A.I. RTE.               | SECTION   | COUNTY | TOTAL SHEETS | SHEET NO. |
|---------------------------|-----------|--------|--------------|-----------|
| 90/94/290                 | 2013-008R | COOK   | 559          | 153A      |
| CONTRACT NO. 60W26        |           |        |              |           |
| ILLINOIS FED. AID PROJECT |           |        |              |           |

FOR INFORMATION ONLY  
 NOT TO SCALE