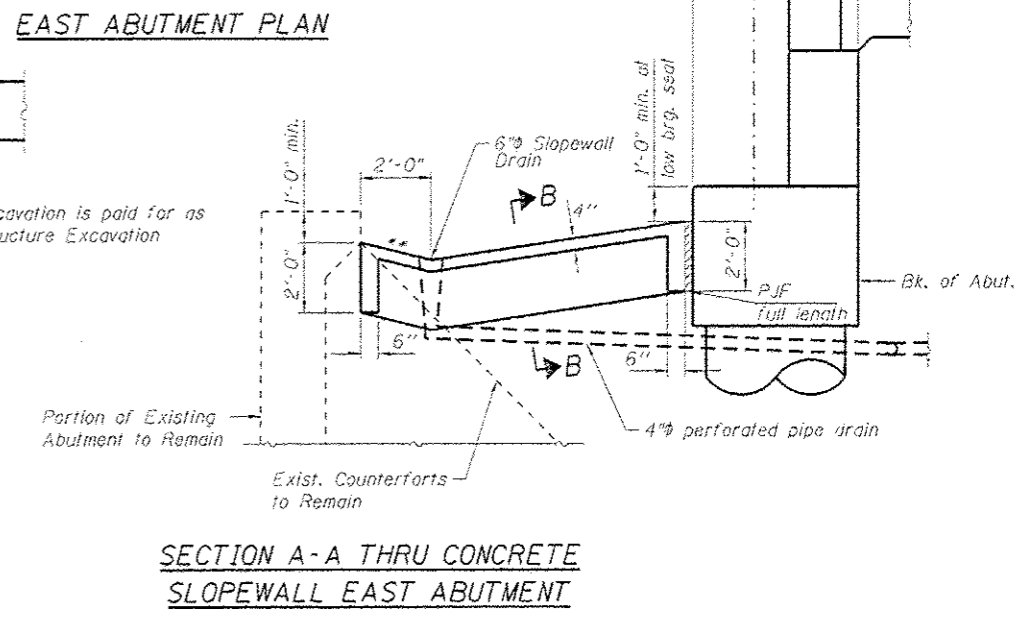
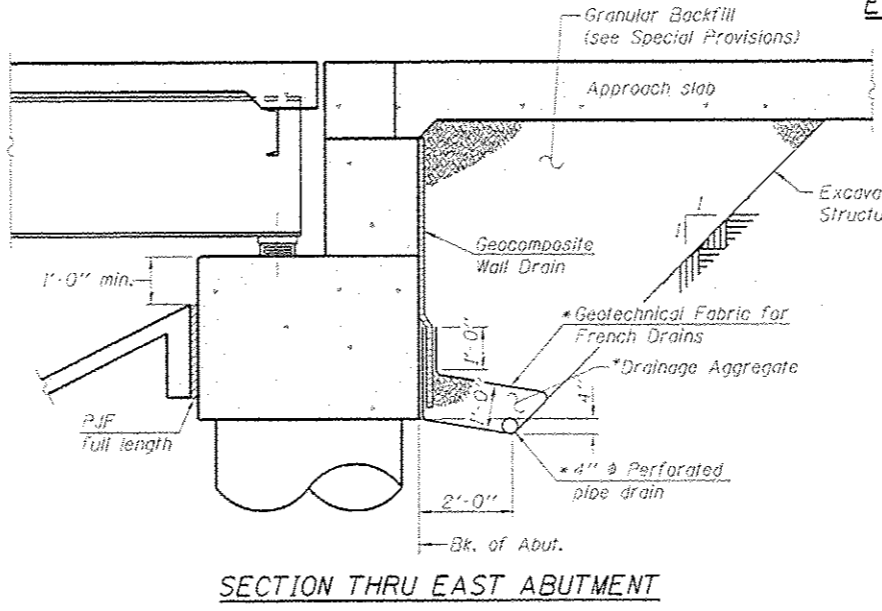
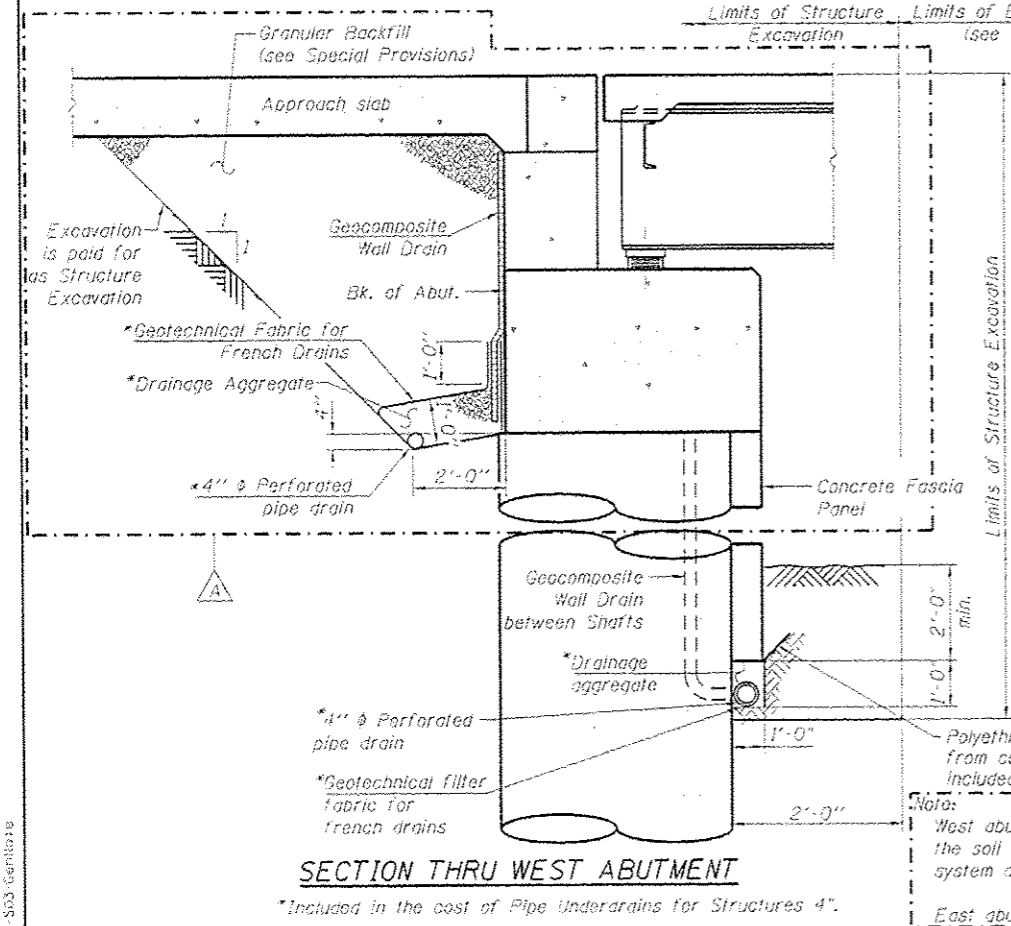
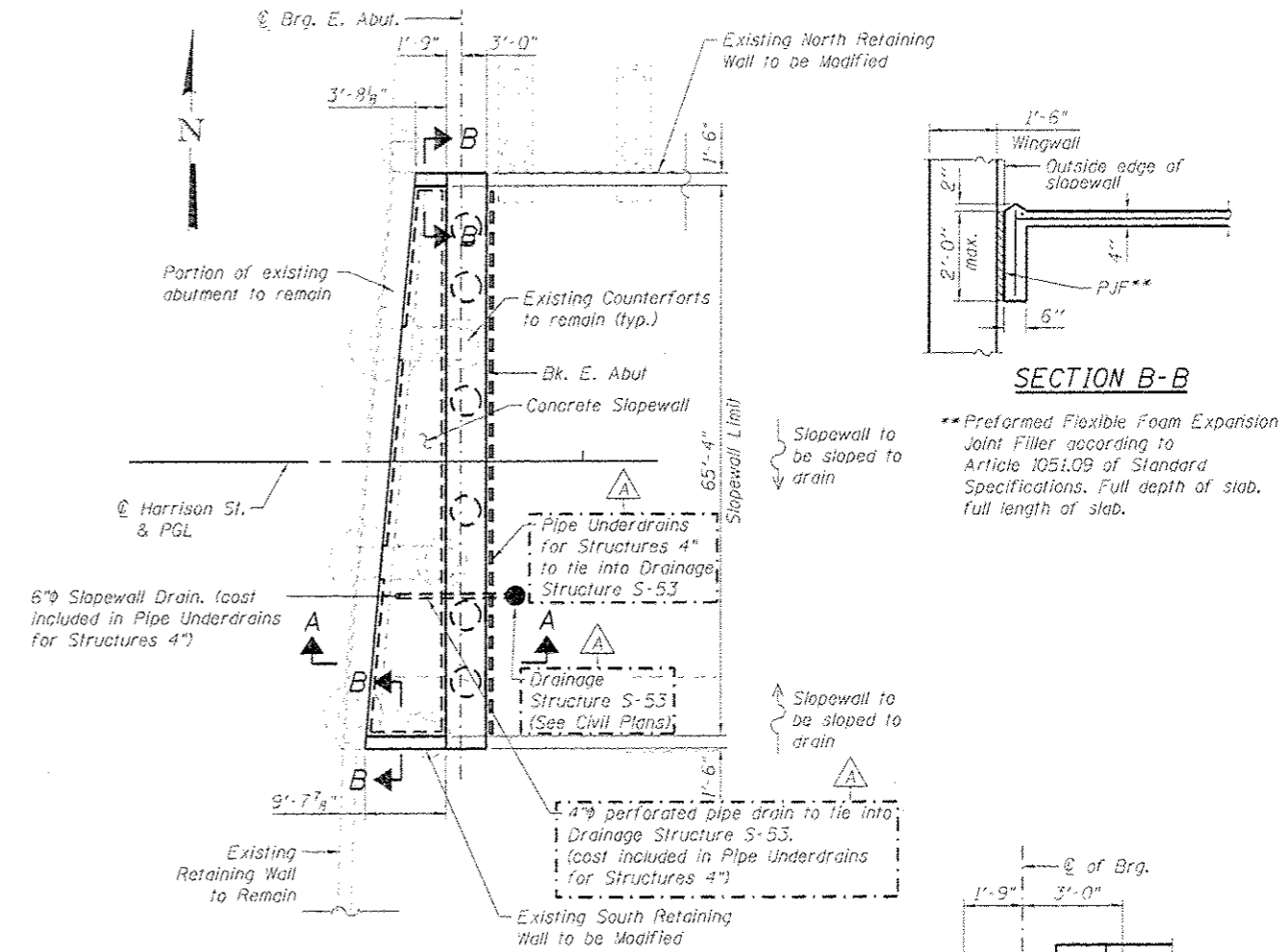


TOTAL BILL OF MATERIALS

DESCRIPTION	UNIT	S.N. 016-1713		TOTAL
		SUPER	SUB	
GRANULAR BACKFILL FOR STRUCTURES	CU. YD.		381	381
REMOVAL OF EXISTING STRUCTURES, NO. 1	EACH	1		1
PROTECTIVE SHIELD	SQ. YD.	1431		1431
STRUCTURE EXCAVATION	CU. YD.		1529	1529
CONCRETE STRUCTURES	CU. YD.		426	426
CONCRETE SUPERSTRUCTURE	CU. YD.	1076		1076
BRIDGE DECK GROOVING	SQ. YD.	1643		1643
FORMLINER TEXTURED SURFACE	SQ. FT.		1244	1244
PROTECTIVE COAT	SQ. YD.	3079		3079
FURNISHING AND ERECTING STRUCTURAL STEEL	L. SUM	0.51		0.51
STUD SHEAR CONNECTORS	EACH	8622		8622
REINFORCEMENT BARS	POUND		566610	566610
REINFORCEMENT BARS, EPOXY COATED	POUND	194730	111930	306660
BAR SPLICERS	EACH	144		144
MECHANICAL SPLICERS	EACH		456	456
SLOPE WALL 4 INCH	SQ. YD.		50	50
NAME PLATES	EACH	1		1
PERMANENT CASING	FOOT		460	460
DRILLED SHAFT IN SOIL	CU. YD.		1403	1403
DRILLED SHAFT IN ROCK	CU. YD.		12	12
PREFORMED JOINT STRIP SEAL	FOOT	143		143
ELASTOMERIC BEARING ASSEMBLY, TYPE 1	EACH	24		24
ANCHOR BOLTS, 1 1/4"	EACH	48		48
ANCHOR BOLTS, 1 1/2"	EACH	24		24
CONCRETE SEALER	SQ. FT.		7472	7472
EPOXY CRACK INJECTION	FOOT		14	14
GEOCOMPOSITE WALL DRAIN	SQ. YD.		139	139
CHAIN LINK FENCE, 4"	FOOT		99	99
STRUCTURAL REPAIR OF CONCRETE (Depth equal or less than 5")	SQ. FT.		154	154
PIPE UNDERDRAINS FOR STRUCTURES 4"	FOOT		276	276
CLASS SI CONCRETE MISCELLANEOUS	CU. YD.		41	41
DECORATIVE RAILING (PARAPET MOUNTED)	FOOT	620		620
SOIL RETENTION SYSTEM	SQ. FT.		2297	2297
TEMPORARY SOIL RETENTION SYSTEM	SQ. FT.		2828	2828
CROSSHOLE SONIC LOGGING	EACH		3	3



- NOTES:**
- Slope wall shall be reinforced with welded wire fabric, 6 in. x 6 in. - W4.0 x W4.0, weighing 58 lbs. per 100 sq. ft. Cost included in Slope Wall 4 Inch pay item.
 - Work this sheet with sheets S1-38 and S1-39.
- ** 1/4" (V.H)

*Included in the cost of Pipe Underdrains for Structures 4".

Note:
West abutment drainage system components under the concrete fascia panel along the EB Taylor Exit shall extend to the soil retention system to the south and tie into the retaining wall (SN 016-1802) underdrain to the north. The drainage system components behind the abutment shall extend the full width of the abutment and tie into Drainage Structure S-56A.
East abutment drainage system components shall extend the full width of the abutment and tie to drainage structure S-53.

S161713-60W26-S53-GenIssue

AECOM	USER NAME: dunkerlayo	DESIGNED: EJO	REVISED: 10/15/2013 EJO, BRD	STATE OF ILLINOIS DEPARTMENT OF TRANSPORTATION	TOTAL BILL OF MATERIAL AND ABUTMENT SECTIONS STRUCTURE NO. 016-1713	F.A.I. RTE.:	SECTION:	COUNTY:	TOTAL SHEET NO.:
	PLAT SCALE: N.T.S.	CHECKED: ATB	REVISED:			90/94/290	2013-00BR	COOK	559
	PLAT DATE: 9/19/2013	DRAWN: BRD	REVISED:			CONTRACT NO. 60W26			
		CHECKED: EJO	REVISED:			ILLINOIS FED. AID PROJECT			