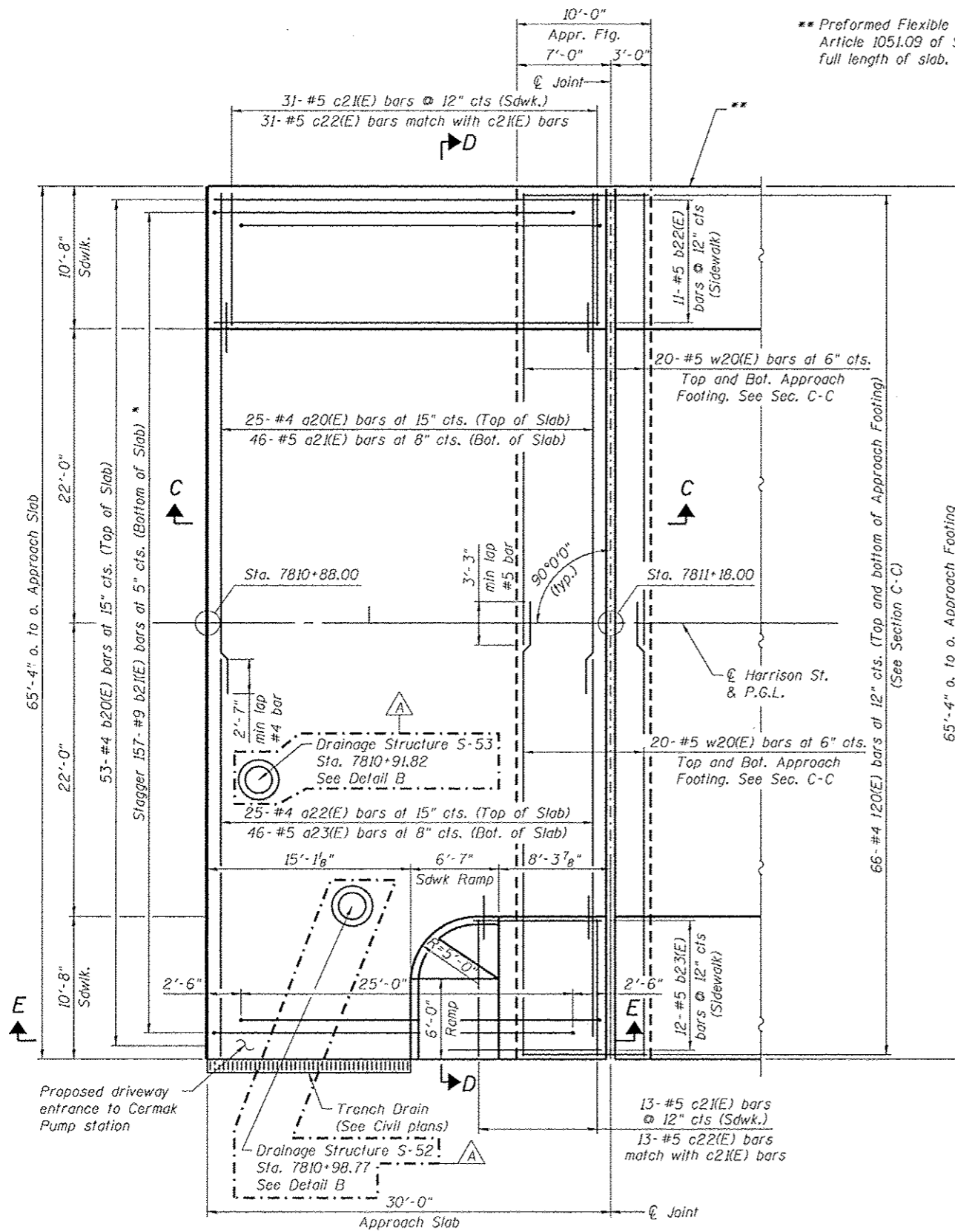


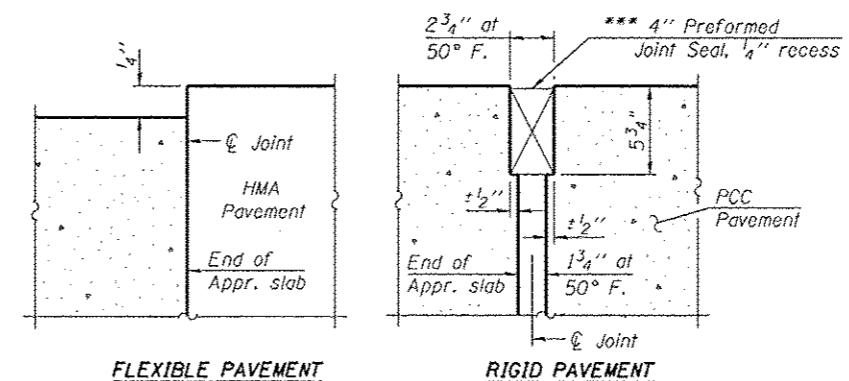
** Preformed Flexible Foam Expansion Joint Filler according to Article 1051.09 of Standard Specifications. Full depth of slab, full length of slab.

*** Cost included with Concrete Superstructure.



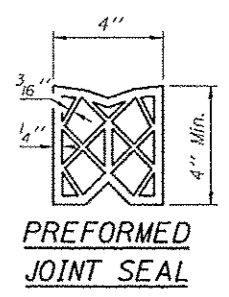
PLAN

* T111 #9 b21(E) bars as required to maintain clearance.

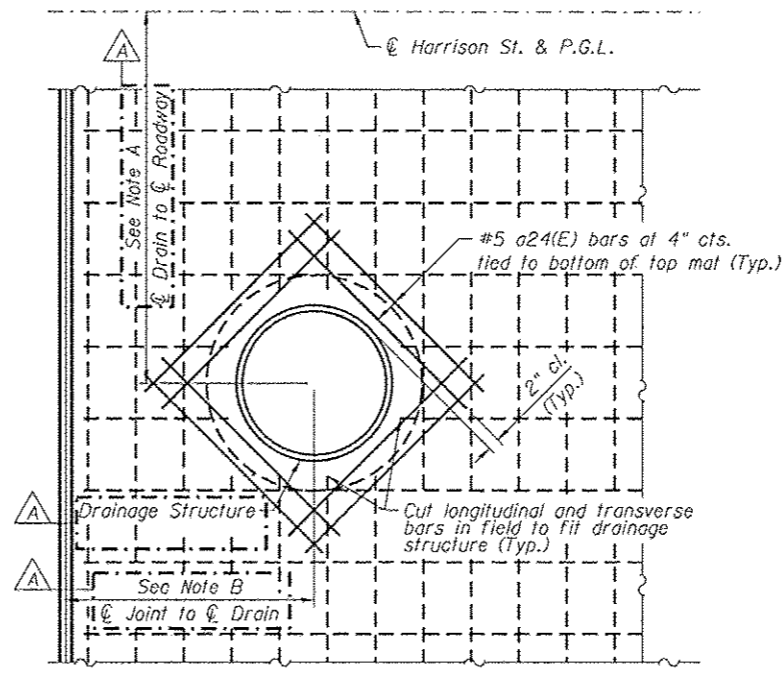


DETAIL A

Note: Dimensions are at right angles.

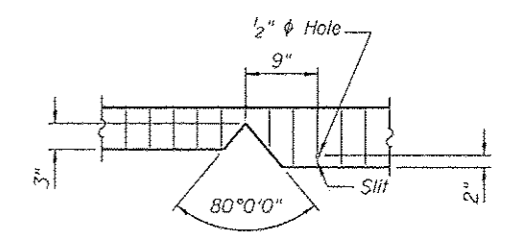


PREFORMED JOINT SEAL



DETAIL B

Cost of cutting bars included in Reinforcement Bars, Epoxy Coated



SEAL CUT-OUT AT CURB

NOTES:

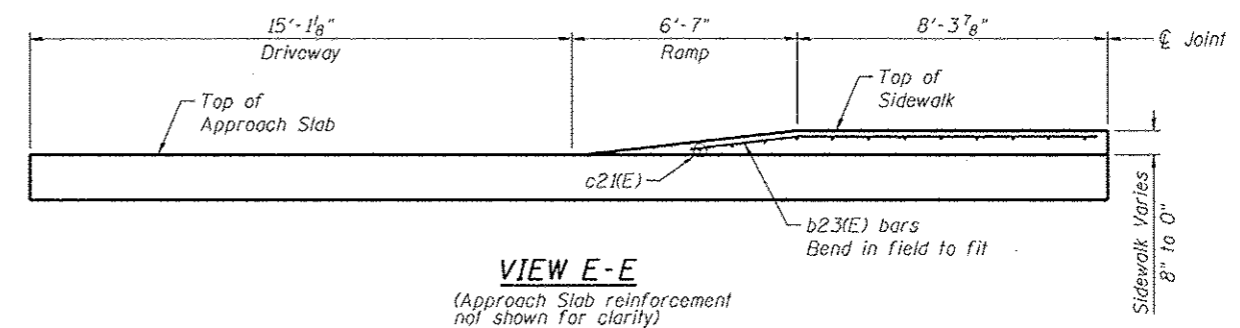
1. See sheet S1-26 of S1-48 for Sections C-C & D-D.
2. See Civil plans for driveway flare details.
3. See Civil plans for drainage structure details.

NOTE A:

For Drainage Structure S-52 = 21'-2 1/2"
For Drainage Structure S-53 = 11'-9"

NOTE B:

For Drainage Structure S-52 = 10'-10 1/2"
For Drainage Structure S-53 = 3'-11 1/8"



VIEW E-E

(Approach Slab reinforcement not shown for clarity)

0161713-60W26-S25-Appr Slab



USER NAME =	krifzm
PLOT SCALE =	N.T.S.
PLOT DATE =	9/15/2013

DESIGNED -	EJO
CHECKED -	ATB
DRAWN -	BRD
CHECKED -	EJO

REVISED	10/15/2013	EJO, MRK
REVISED		
REVISED		
REVISED		

STATE OF ILLINOIS
DEPARTMENT OF TRANSPORTATION

EAST APPROACH SLAB PLAN
STRUCTURE NO. 016-1713

SHEET NO. S1-25 OF S1-48 SHEETS

F.A.I. RTE.	SECTION	COUNTY	TOTAL SHEETS	SHEET NO.
90/94/290	2013-008R	COOK	559	275
CONTRACT NO. 60W26			ILLINOIS FED. AID PROJECT	