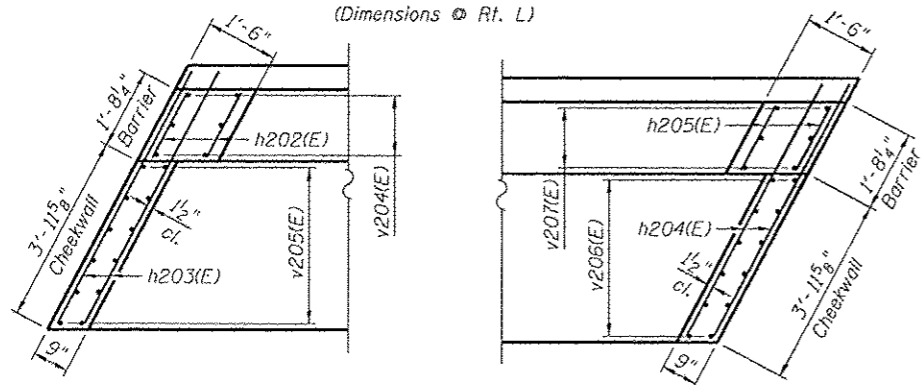
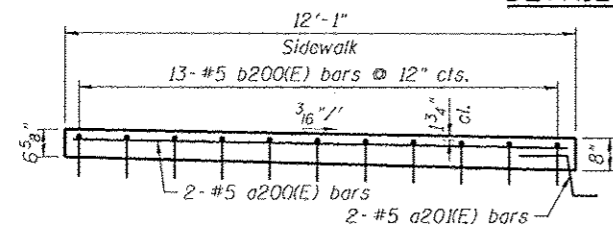


SECTION A-A
(Dimensions @ Rt. L.)

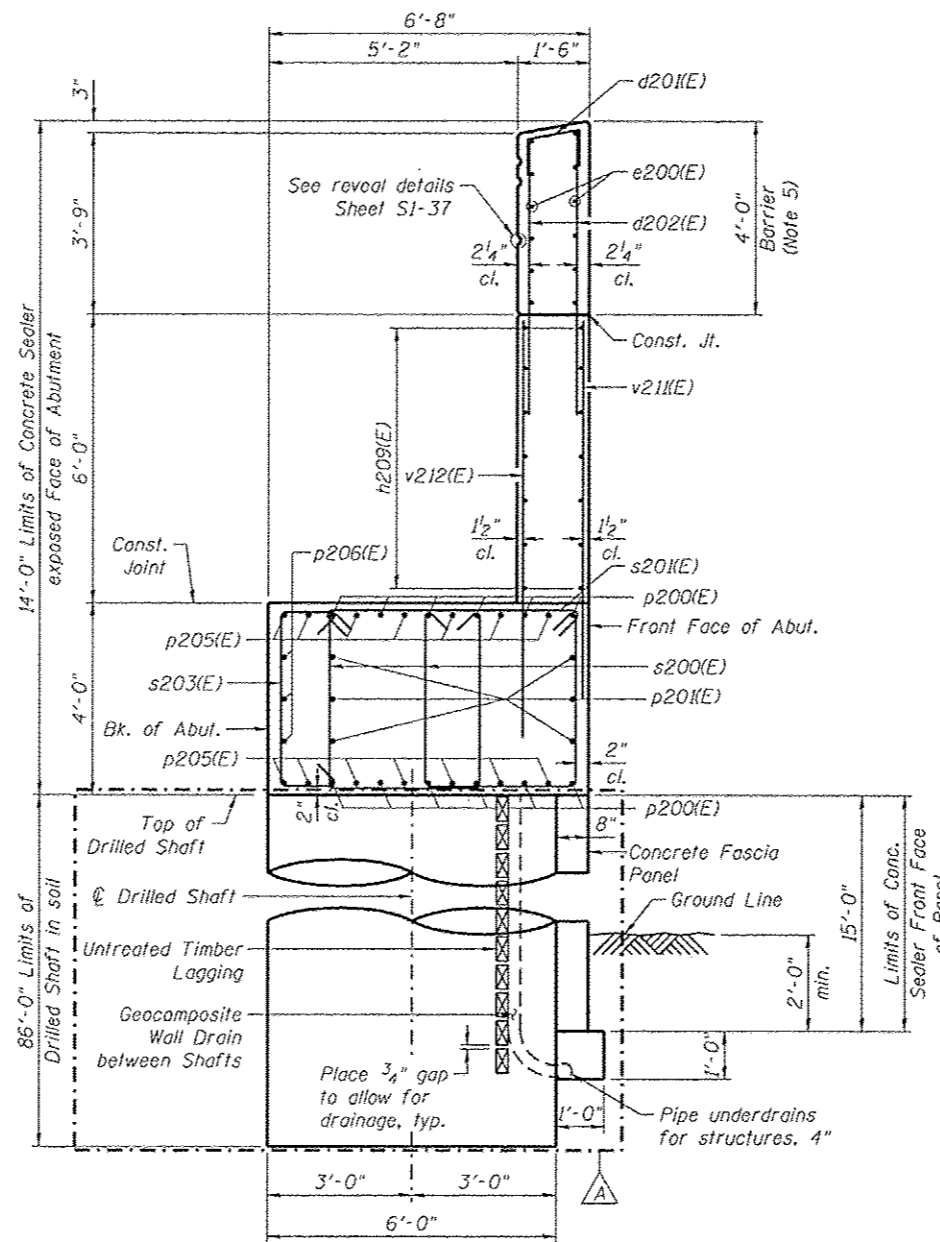


DETAIL 1

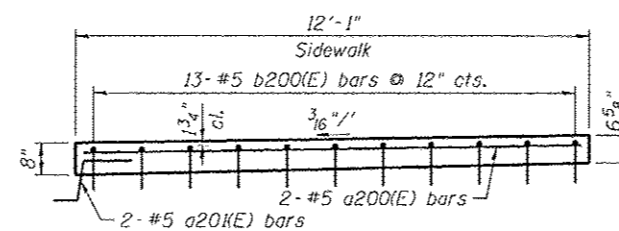
DETAIL 2



DETAIL 3



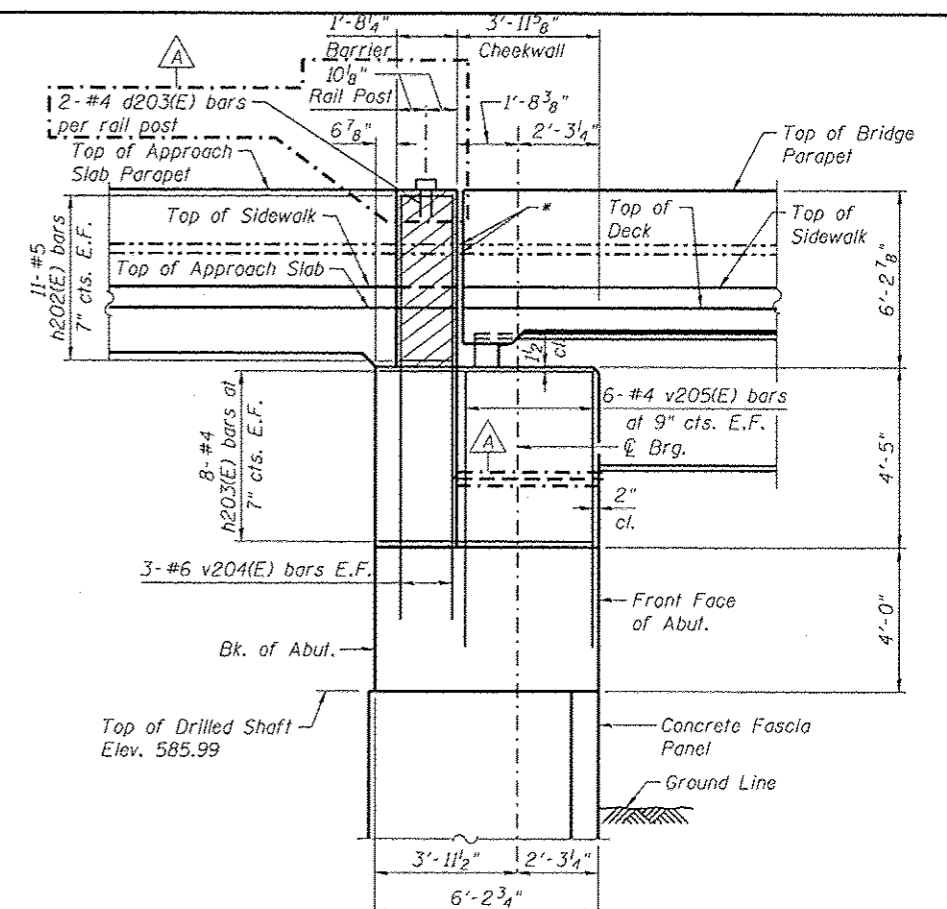
SECTION F-F
(Dimensions @ Rt. L.)



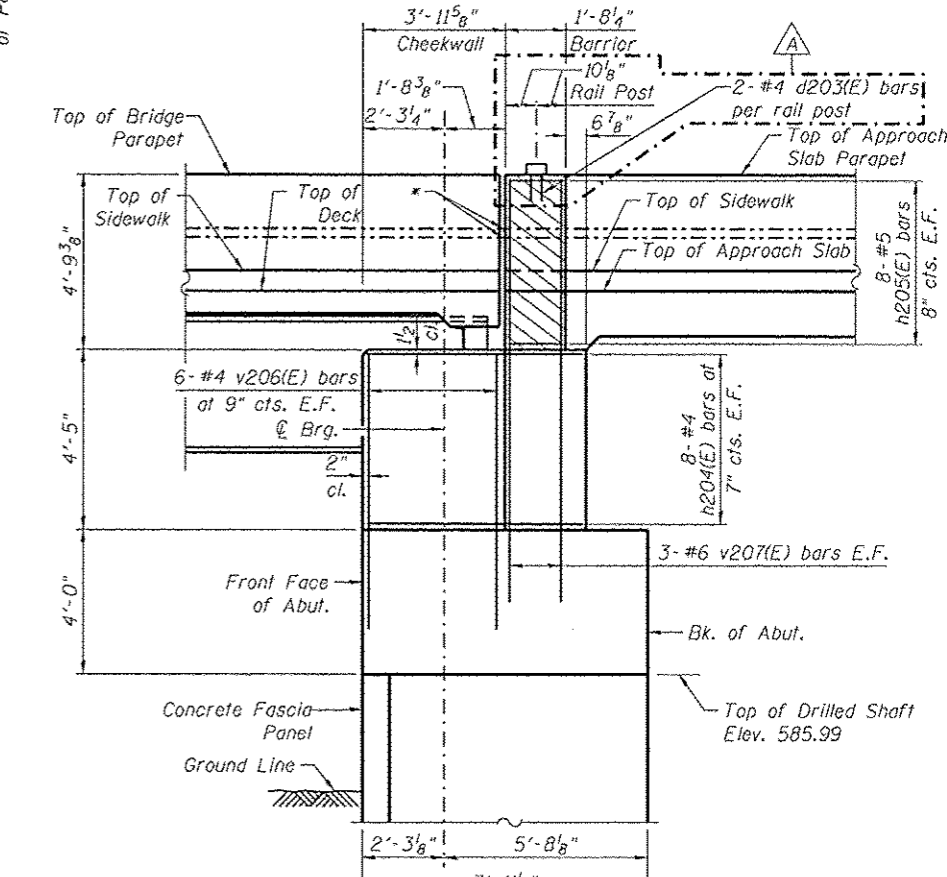
DETAIL 5

NOTES:

1. Hatched area to be poured after superstructure false work has been removed. Quantity of concrete included with Concrete Superstructure.
2. Concrete Sealer shall be applied to abutment backwall, bearing seats and exposed faces of abutment cap, cheekwalls and fascia panel.
3. E.F. = Each Face
4. Bars noted thus, 3x2-#5 indicates 3 lines of bars with 2 lengths of bars per line.
5. Barrier concrete included with pay item Concrete Superstructure.



SECTION B-B



SECTION C-C

*Provide conduit expansion/deflection fitting at all expansion joints.

0161713-60W26-S35-Abutment



USER NAME: kr1tzm	DESIGNED: EJO	REVISED: A 10/15/2013 EJO, BRD
PLOT SCALE: N.T.S.	CHECKED: ATB	REVISED:
PLOT DATE: 9/15/2013	DRAWN: BRD	REVISED:
	CHECKED: EJO	REVISED:

**STATE OF ILLINOIS
DEPARTMENT OF TRANSPORTATION**

**WEST ABUTMENT SECTION
STRUCTURE NO. 016-1713**

SHEET NO. S1-35 OF S1-48 SHEETS

F.A.I. RTE. 90/94/290	SECTION 2013-008R	COUNTY COOK	TOTAL SHEETS 559	SHEET NO. 285
CONTRACT NO. 60W26			ILLINOIS FED. AID PROJECT	