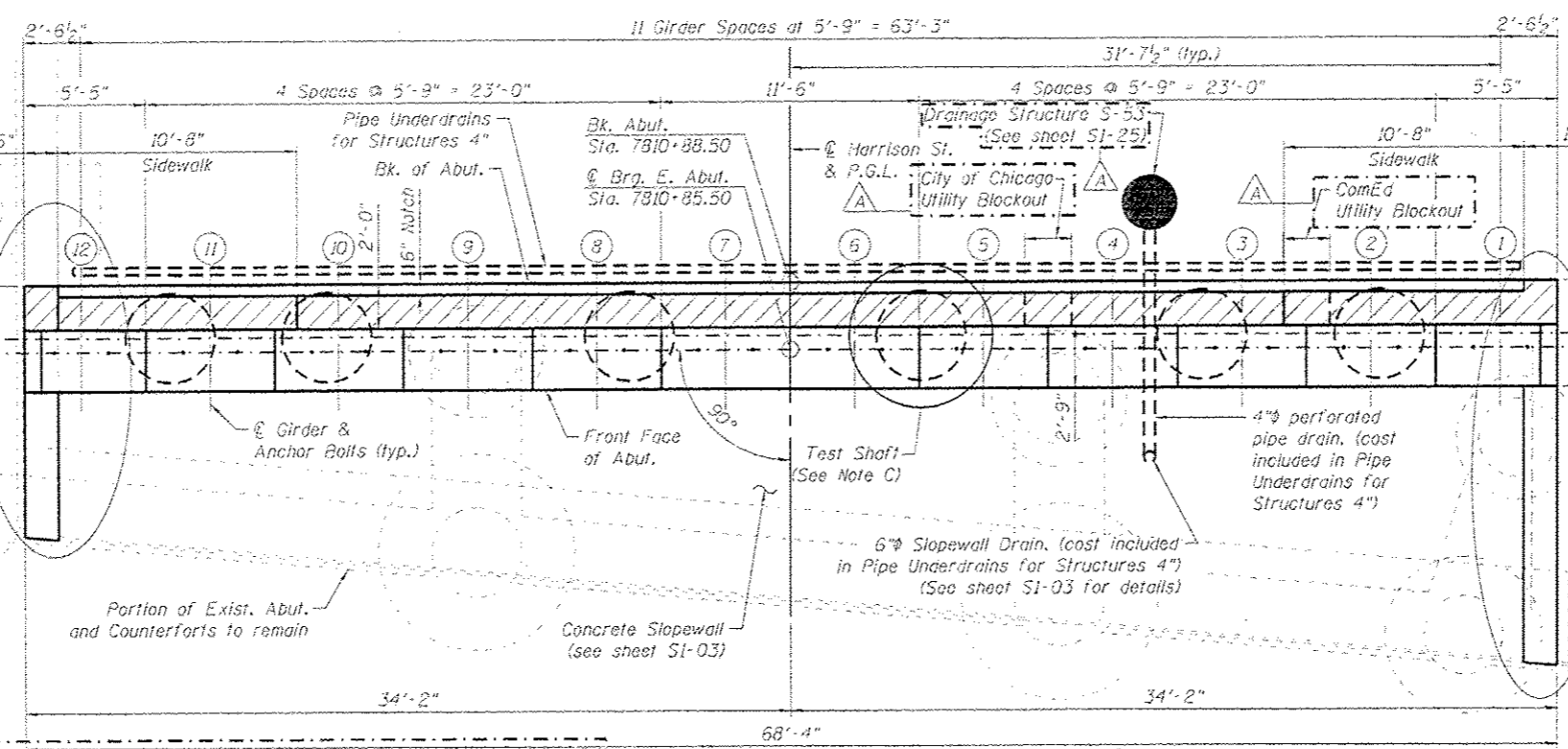




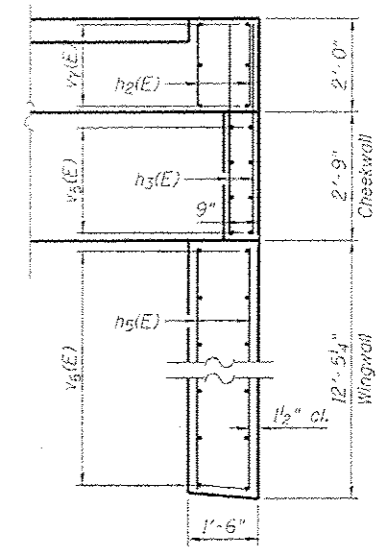
Portion of Exist. N. Retaining Wall to remain



PLAN

Proposed East Abutment is designed for vertical load and portion of lateral load. The remainder of the lateral load is resisted by the existing counterfort wall, which is to remain.

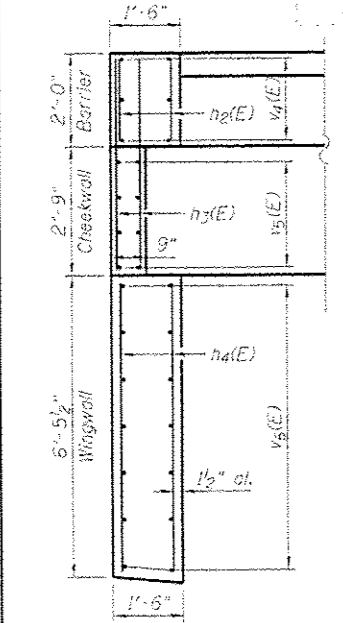
Note C: Contractor shall test the Drilled Shaft in accordance with Special Provision for Crosshole Sonic Logging.



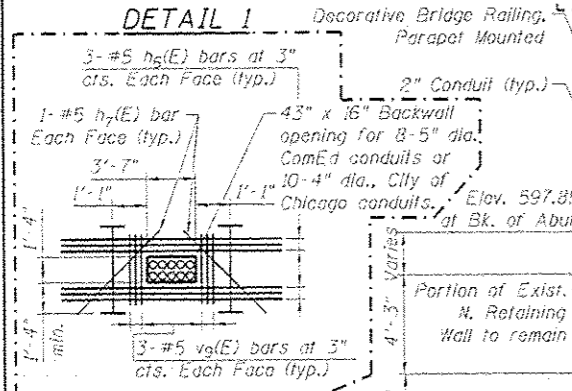
DETAIL 2

** The quantities and reinforcement detailing are based on the top of shaft and the estimated top of rock elevations shown and may change based on the actual top of rock elevations encountered at each shaft and the final top of shaft elevation.

*** Contractor may need to increase the casing thickness to withstand the installation process. The Estimated Top of Rock/Bottom of Permanent Casing Elevation is shown. The limits of casing shall be adjusted as necessary, and as approved, such that the actual installed casing length extends to the as-encountered top of rock at each shaft. See Article 516.06(d) of the Standard Specifications.



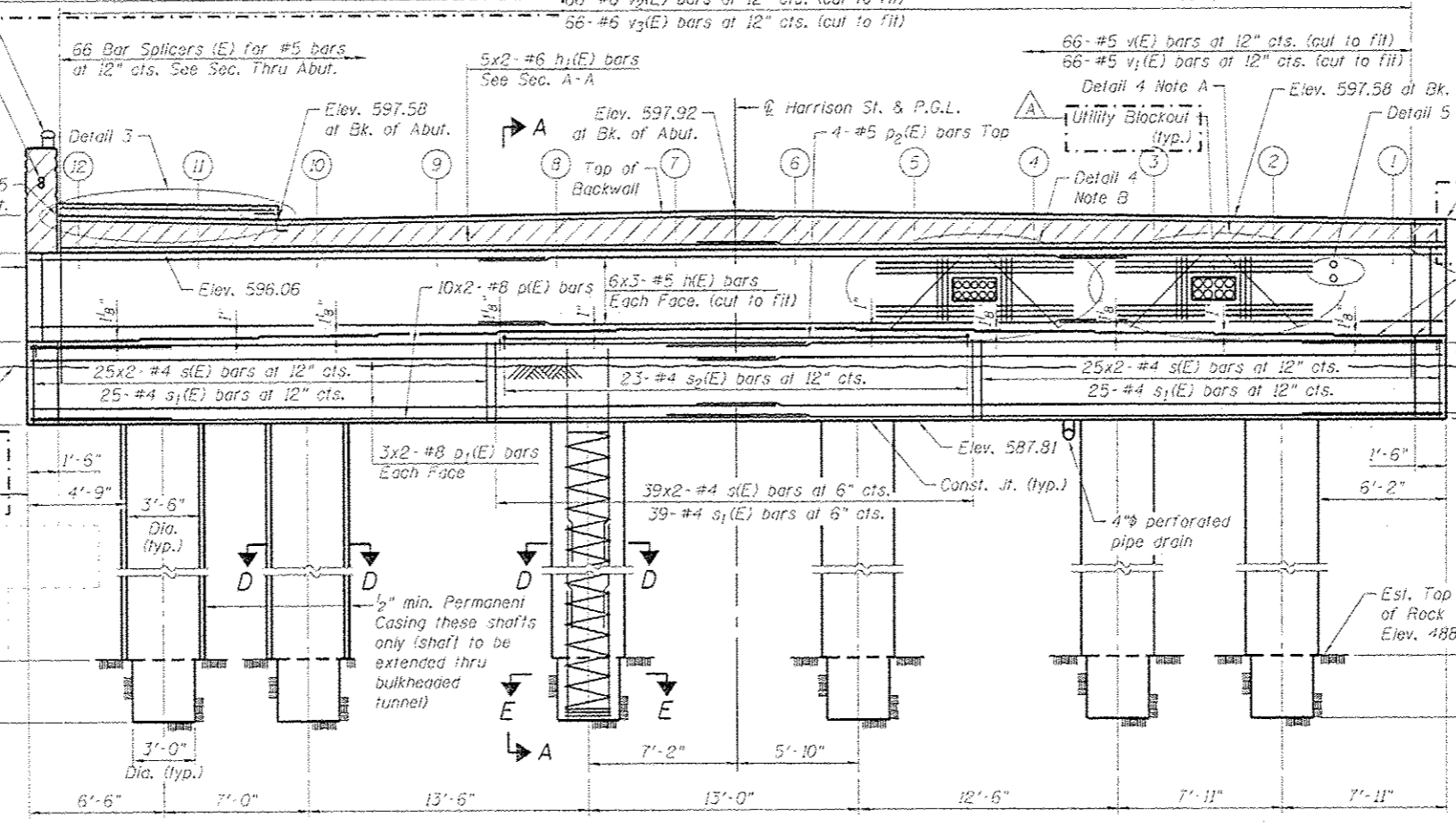
DETAIL 1



DETAIL 4

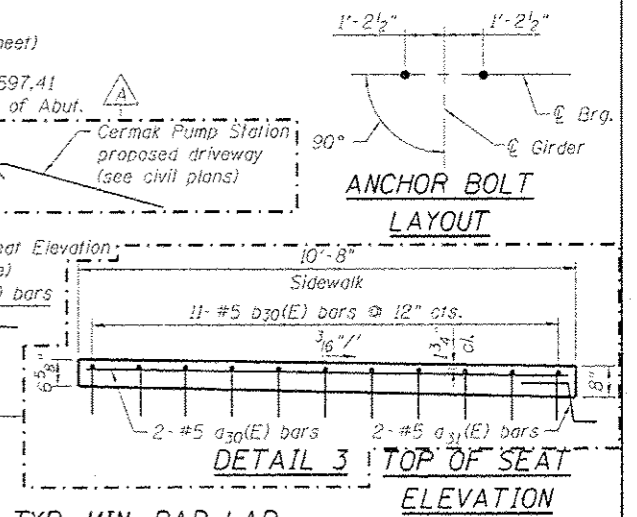
Note A: Conduit provided by others. Contractor to coordinate with utility owner for location and size of the utility blockouts. Cast of utility blockouts included in Concrete Structures. (see electrical plans)

Note B: Cast of utility blockouts included in Concrete Structures. (see electrical plans)



ELEVATION

(Looking East. Wingwall, Cheekwall and Barrier Reinforcement not shown for clarity)



ANCHOR BOLT LAYOUT

DETAIL 3 TOP OF SEAT ELEVATION

TYP. MIN. BAR LAP
(Unless Noted Otherwise)
#5 bar = 3'-3"
#6 bar = 3'-10"
#8 bar = 6'-9"

Girder No.	Seat Elevation
1	591.81
2	591.90
3	591.99
4	592.08
5	592.17
6	592.26
7	592.26
8	592.17
9	592.08
10	591.99
11	591.90
12	591.81

NOTES:
1. For section views see Sheet S1-39.
2. For Anchor Bolt Details see Sheet S1-32.
3. Hatched area to be poured after superstructure false work has been removed. Quantity of concrete included with Concrete Superstructure.
4. Bars noted thus, 3x2-#5 indicates 3 lines of bars with 2 lengths of bars per line.

S16713-60426-S3B-Abutment



USER NAME	DESIGNED	CHECKED	REVISION
dunkertlova	EJO	ATB	10/15/2013 EJO, BRD

STATE OF ILLINOIS
DEPARTMENT OF TRANSPORTATION

EAST ABUTMENT PLAN AND ELEVATION
STRUCTURE NO. 016-1713

P.A.I. RTE.	SECTION	COUNTY	TOTAL SHEET NO.
90/94/290	2013-008R	COOK	559 / 288
CONTRACT NO.			60W26
ILLINOIS: FEB. 16 PROJECT			