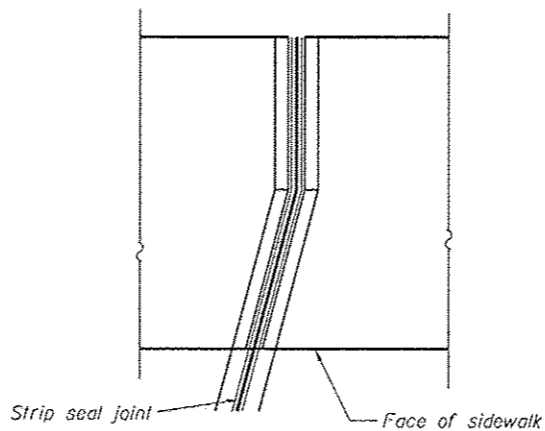
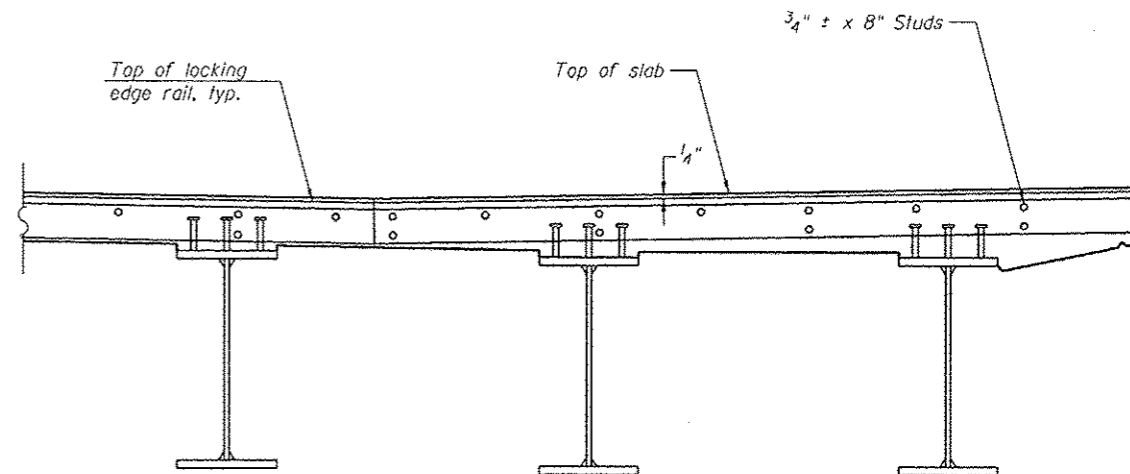


TRIMETRIC VIEW - STAGE I AND II EAST SIDEWALK

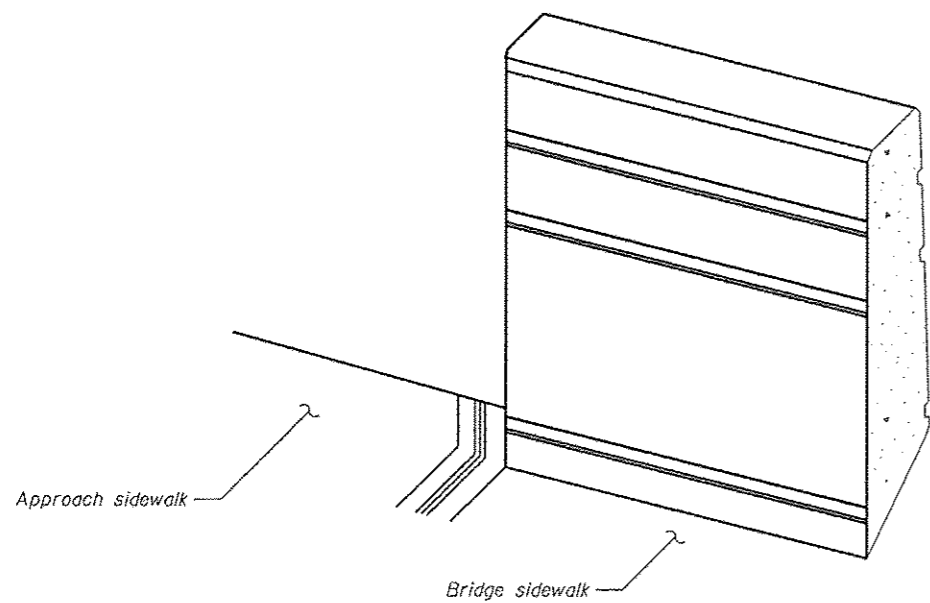


PLAN - STAGE I AND II AT EAST SIDEWALK

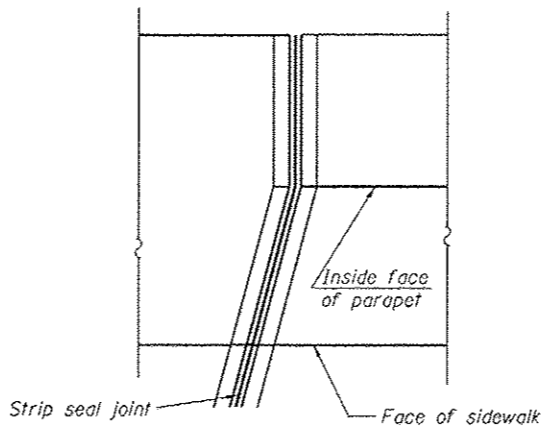


STAGE I AND II TYPICAL END TREATMENT AT EAST SIDEWALK

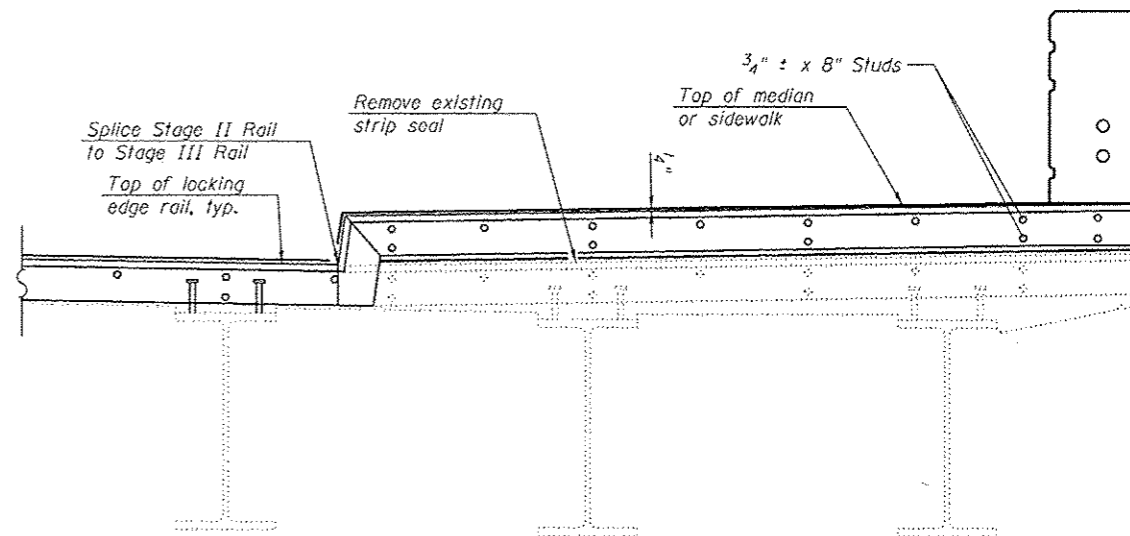
Shorter plates with a single row of studs at 12" cts. may be necessary on sidewalks which are shallower than 9". See manufacturer's recommendation.



TRIMETRIC VIEW - STAGE III AT EAST SIDEWALK

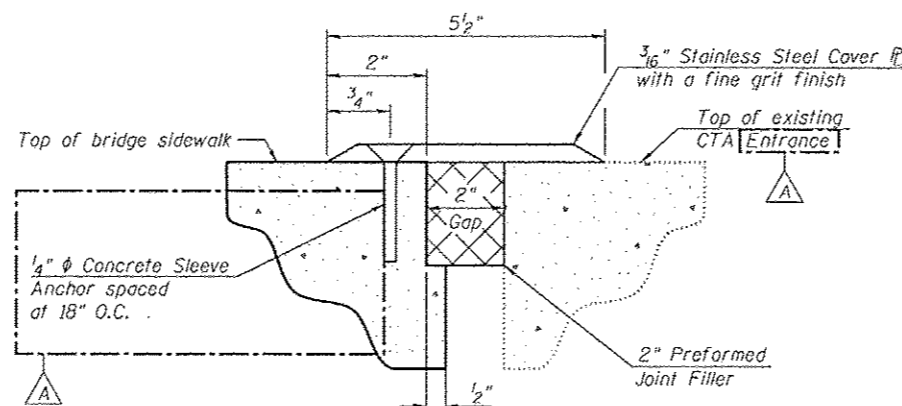


PLAN - STAGE III AT EAST SIDEWALK



STAGE III TYPICAL END TREATMENT AT EAST SIDEWALK

Shorter plates with a single row of studs at 12" cts. may be necessary on sidewalks which are shallower than 9". See manufacturer's recommendation.



CTA STATION EXPANSION JOINT DETAIL

(To be confirmed by the CTA. Cost to be included with Concrete Superstructure)

13:11:52 PM 0161715-60W26-SD42-Exp.Joint_Details2.dgn



USER NAME =	BAWitort
DESIGNED -	KAH
CHECKED -	MDS
PLOT SCALE =	0:1.0000 " / in.
PLOT DATE =	10/14/2013

DESIGNED -	KAH
CHECKED -	MDS
DRAWN -	RLS
CHECKED -	MDS

REVISED	▲ 10/15/2013	KAH
REVISED		
REVISED		
REVISED		

**STATE OF ILLINOIS
DEPARTMENT OF TRANSPORTATION**

**EXPANSION JOINT DETAILS 2
STRUCTURE NO. 016-1716**

SHEET NO. S2-42 OF S2-81 SHEETS

F.A.U. RTE.	SECTION	COUNTY	TOTAL SHEETS	SHEET NO.
3730	2013-00BR	COOK	559	402
CONTRACT NO. 60W26			ILLINOIS FED. AID PROJECT	