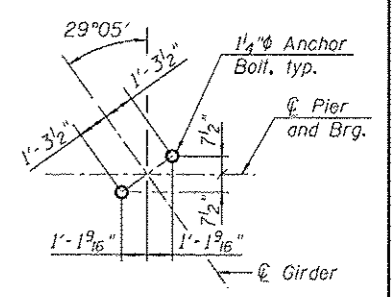
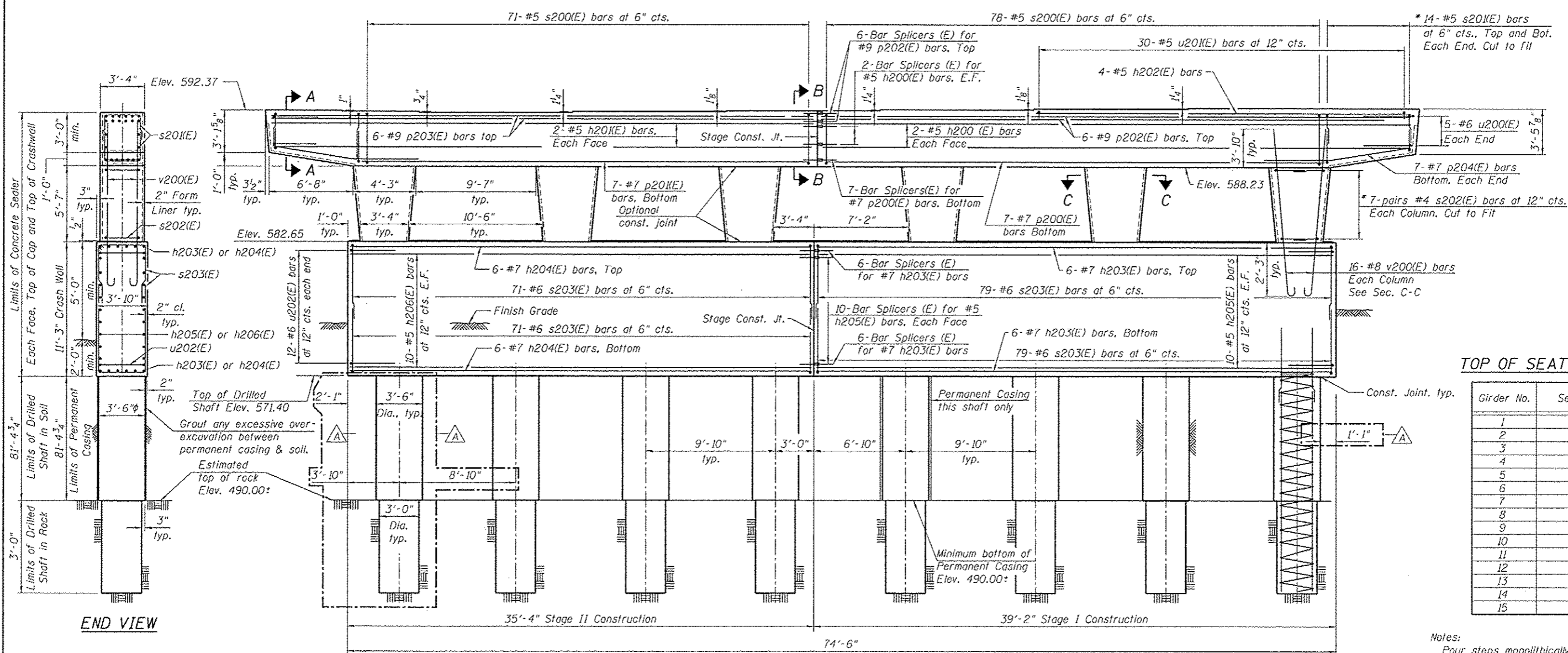


TOP PLAN



ANCHOR BOLT LAYOUT

*Cut vertical legs of bar to fit.



ELEVATION
(Looking North)

TOP OF SEAT ELEVATION

Girder No.	Seat Elevation
1	592.37
2	592.29
3	592.23
4	592.23
5	592.34
6	592.34
7	592.43
8	592.43
9	592.53
10	592.53
11	592.62
12	592.62
13	592.72
14	592.72
15	592.72

Notes:
 Pour steps monolithically with cap.
 Space reinforcement in cap to miss anchor bolts.
 For Sections A-A, B-B and C-C, see sheet S2-59 of S2-81.

10/14/2013 10:19:20 AM 0167116-60W26-S058-Pier 1 P&E.dgn



USER NAME = BAWtorf	DESIGNED - JRM	REVISED - 10/15/2013 MDS
PLT SCALE = 40.0005 '1' / In.	CHECKED - MDS	REVISED
PLT DATE = 10/14/2013	DRAWN - RLS	REVISED
	CHECKED - JRM	REVISED

STATE OF ILLINOIS
DEPARTMENT OF TRANSPORTATION

PIER 1 PLAN AND ELEVATION
STRUCTURE NO. 016-1716

SHEET NO. S2-58 OF S2-81 SHEETS

F.A.U. RTE.	SECTION	COUNTY	TOTAL SHEETS	SHEET NO.
3730	2013-008R	COOK	559	418
CONTRACT NO. 60W26			ILLINOIS FED. AID PROJECT	