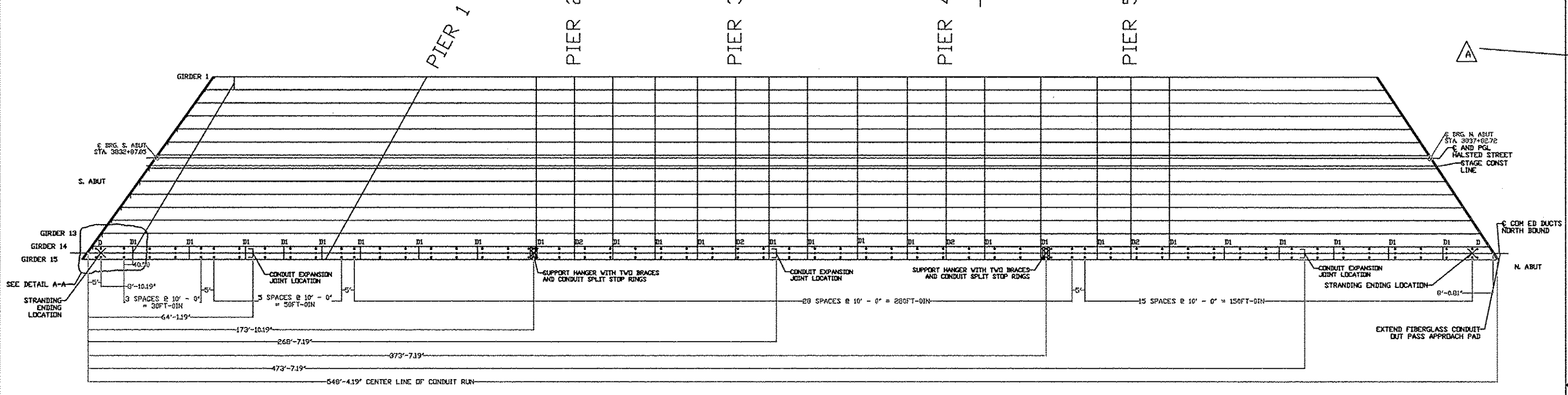
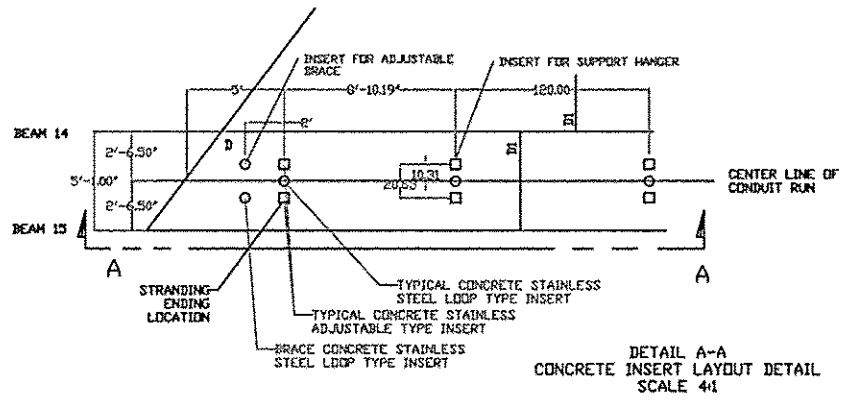
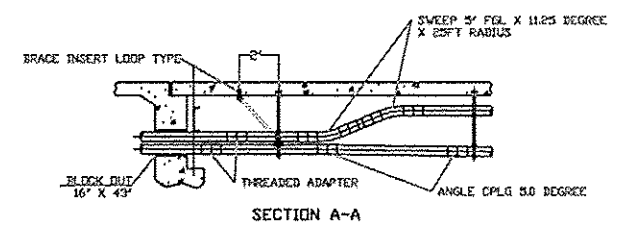


REVISIONS				
ZONE	REV	DESCRIPTION	DATE	APPROVED
	2.0	ADDENDUM A	10/15/2013	BRIAN BB



SUPPORT HANGER AND CONDUIT LAYOUT

FOR INFORMATION ONLY
WORK TO BE PERFORMED BY OTHERS
WITH THE EXCEPTION OF PLACEMENT
OF INSERTS INTO SUPERSTRUCTURE



Note:
ALL MEASUREMENTS ARE IN INCHES UNLESS NOTED OTHERWISE

DRAWING APPROVAL
I _____
APPROVE THIS DRAWING FOR MANUFACTURING DATE: _____

This drawing is the property of Condux International, Inc. and the information thereon is to be treated as confidential. It is not to be used, copied or disclosed to outside parties without our written consent

CONDUIT SUPPORT AND CONDUIT LAYOUT		CONDUX INTERNATIONAL, INC. MANKATO MN PH. 800-533-2077		
		Project: ComEd Halsted Street Bridge over F.A.I. RTE 290 Eisenhower Expressway, Cook County Illinois		
WEIGHT: 0.0 LBS EA	SIZE	FSCM NO.	DWG NO.	REV
QUOTE NO. 3985214499	SCALE 1/2		TBA	2.0
	DATE: 09-27-2013	SHEET: CONDUX 5 OF 6		
		SHEET 441B OF 559		