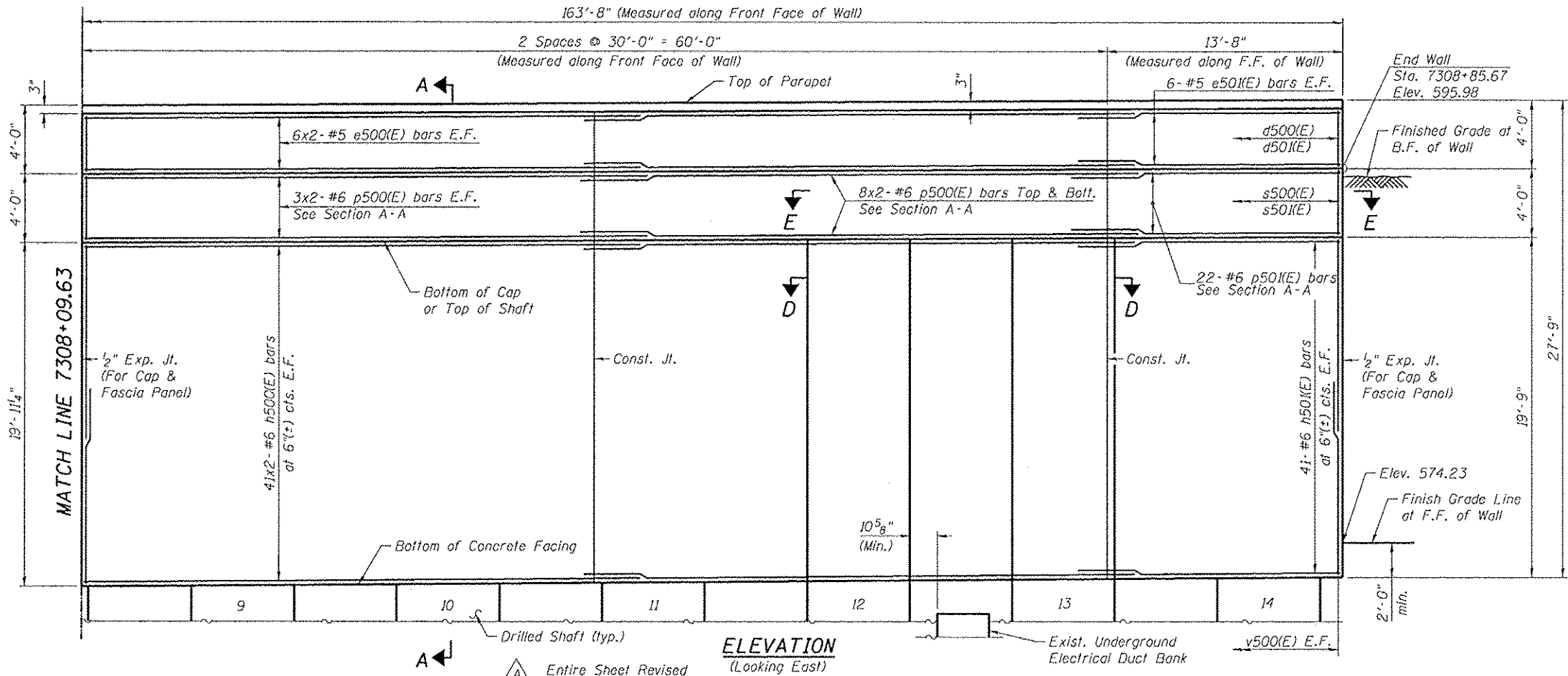


**ELEVATION**  
(Looking East)



**ELEVATION**  
(Looking East)

- NOTE A:**  
Contractor shall test the Drilled Shaft in accordance with Special Provision for Crosshole Sonic Logging.
- NOTES:**
1. Work this sheet with Sheet RW-04 & RW-05.
  2. Parapet concrete shall be paid for as Concrete Superstructure.
  3. Shaft Cap concrete shall be paid for as Concrete Structures.
  4. B.F. = Back Face  
F.F. = Front Face  
E.F. = Each Face

0161802-60W26-503-SuperStruct



USER NAME * dunkerlayb	DESIGNED - DD	REVISION  10/15/2013 A.T.B.
PLOT SCALE * N.T.S.	CHECKED - ATB	REVISION
PLOT DATE * 9/15/2013	DRAWN - BRD	REVISION
	CHECKED - ATB	REVISION

STATE OF ILLINOIS  
DEPARTMENT OF TRANSPORTATION

WALL ELEVATION DETAIL  
STRUCTURE NO. 016-1802

F.A.I. RTE. 90/94/290	SECTION 2013-008R	COUNTY COOK	TOTAL SHEETS 559	SHEET NO. 455
CONTRACT NO. 60W26			ILLINOIS FED. AID PROJECT	

SHEET NO. RW-03 OF RW-08 SHEETS