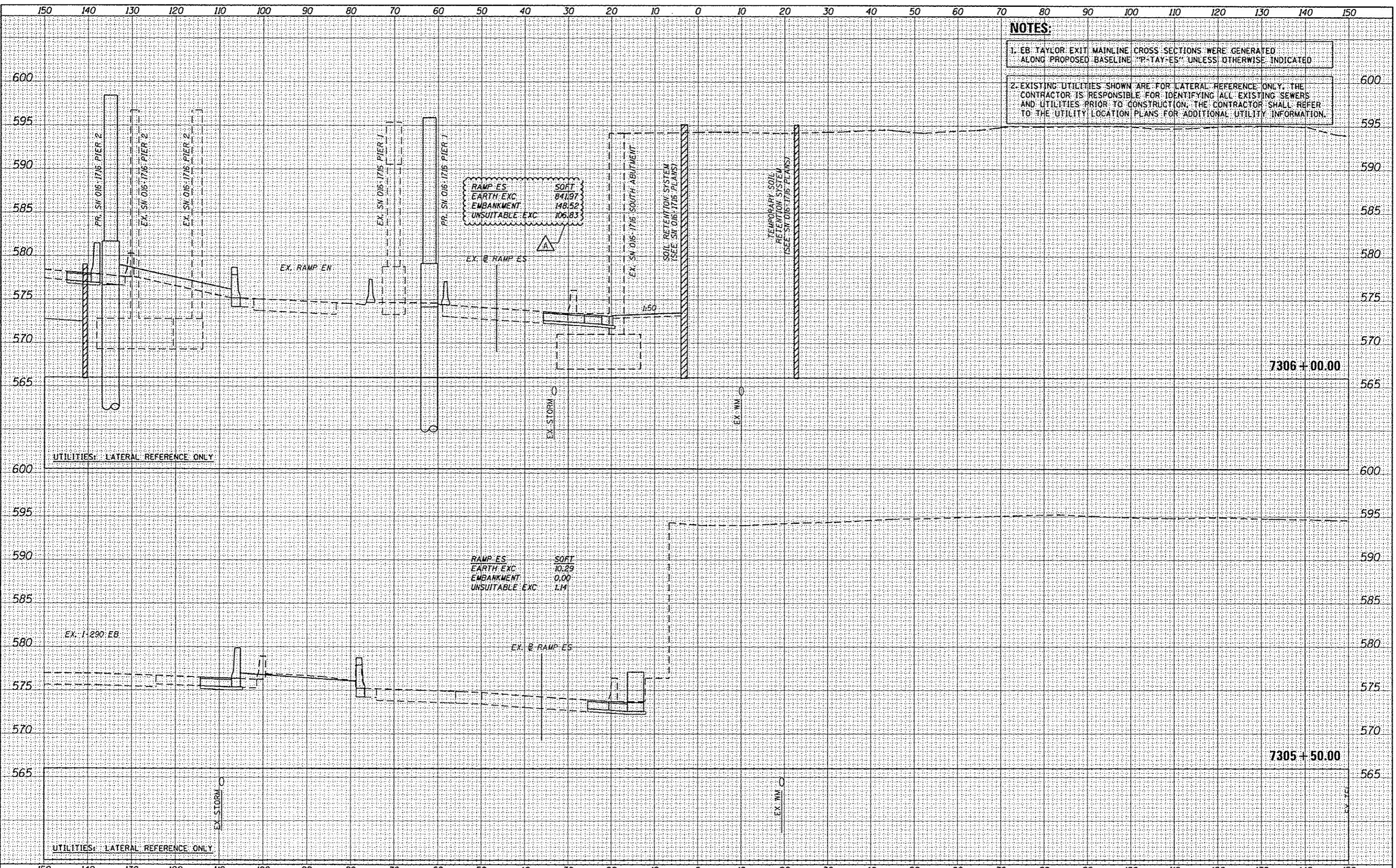


NOTES:

- 1. EB TAYLOR EXIT MAINLINE CROSS SECTIONS WERE GENERATED ALONG PROPOSED BASELINE "P-TAY-ES" UNLESS OTHERWISE INDICATED
- 2. EXISTING UTILITIES SHOWN ARE FOR LATERAL REFERENCE ONLY. THE CONTRACTOR IS RESPONSIBLE FOR IDENTIFYING ALL EXISTING SEWERS AND UTILITIES PRIOR TO CONSTRUCTION. THE CONTRACTOR SHALL REFER TO THE UTILITY LOCATION PLANS FOR ADDITIONAL UTILITY INFORMATION.



DATE	
BY	
APPROVED	
DATE	
BY	
NO.	
NO.	
NO.	

DATE	
BY	
APPROVED	
DATE	
BY	
NO.	
NO.	
NO.	



DESIGNED	- OPS	REVISION	- 10/15/2013
DRAWN	- OPS	REVISION	-
CHECKED	- DBM	REVISION	-
DATE	- 09/15/13	REVISION	-
USER NAME	- moransk		
PLLOT SCALE	- 10:8000' = 1" =		
PLLOT DATE	- 10/14/2013		

**STATE OF ILLINOIS
DEPARTMENT OF TRANSPORTATION**

EB TAYLOR EXIT MAINLINE CROSS SECTION			
SCALE: 1/5"=1'10"	SHEET 33 OF 41 SHEETS	STA. 7305+50.00 TO STA. 7306+00.00	

F.A.I. RTE.	SECTION	COUNTY	TOTAL SHEETS	SHEET NO.
90/94/290	2013-007R	COOK	559	551
				CONTRACT NO. 60W26
[ILLINOIS] FED. AID PROJECT				