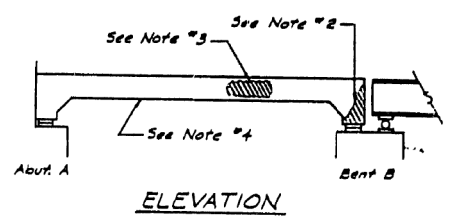
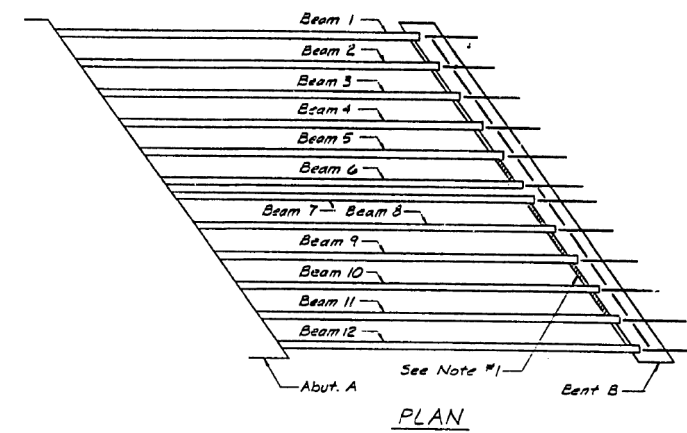
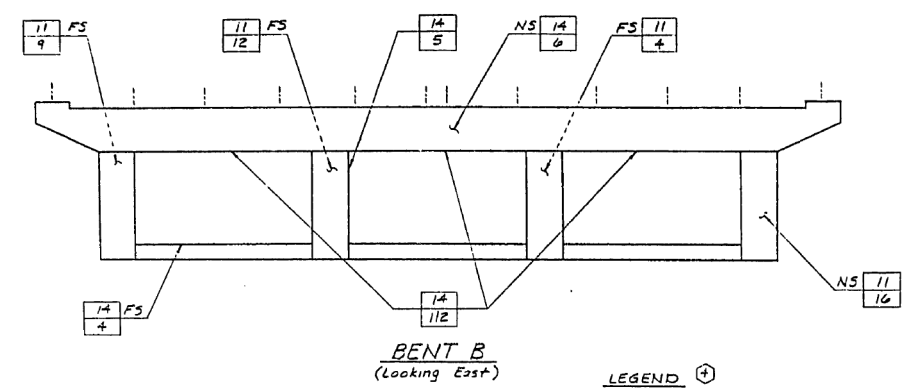


FOR INFORMATION ONLY

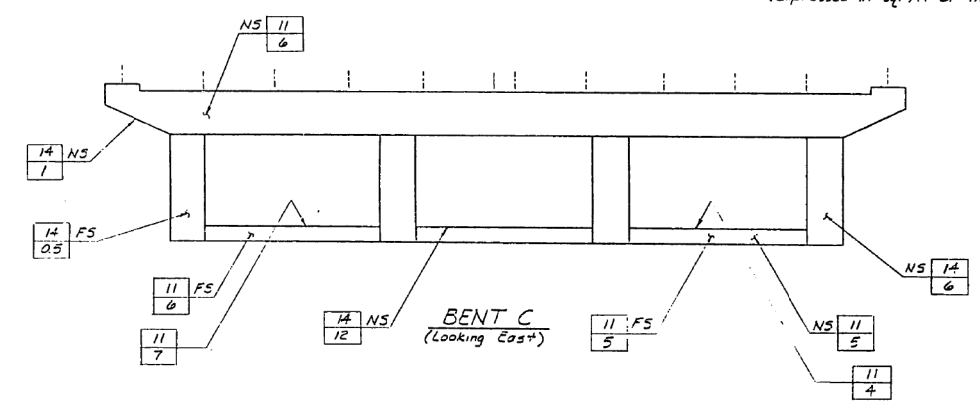
FED. AID DIST. NO.	SECTION	COUNTY	TOTAL SHEETS	SHEET NO.
90/94	#	COOK	79	48A
FED. AID PROJECT # 1985-080 R				



- Spalling concrete on diaphragms between Beams 5:6, 7:8, 8:9, 9:10 and 10:11 to be repaired. Area = 15 Sq. Ft.
- Spalling concrete at the ends of Beams 2, 3, 4, 5, 6, 7, 8, 9, 10 and 11 at Bent B to be repaired. Area = 70 Sq. Ft.
- The north face of Beam 12 has a 10' x 4' spall area to be repaired. Area = 40 Sq. Ft.
- The bottom of Beam 7 has spalling concrete its entire length to be repaired. Area = 60 Sq. Ft.

LEGEND

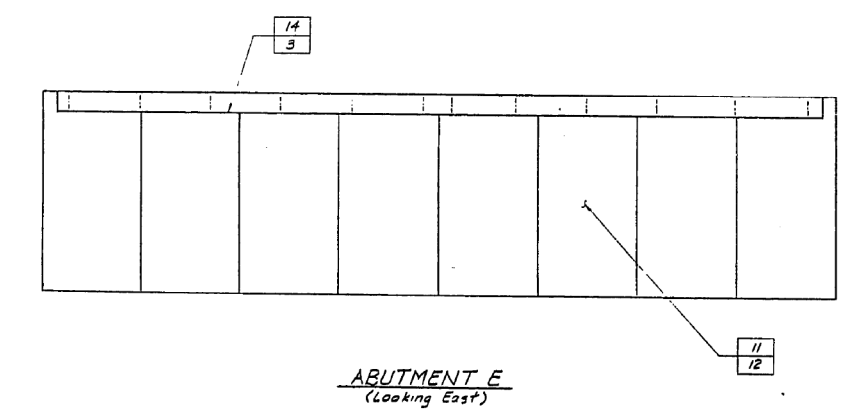
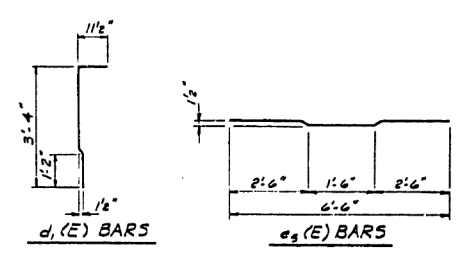
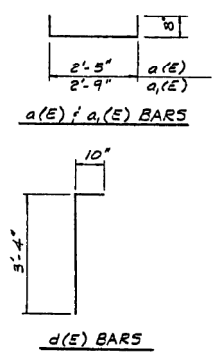
- Indicates type of repair (For Details, See Sht. HAR-5C)
- Indicates area of distress (Expressed in sq. ft. or lin. ft.)



REINFORCEMENT BILL OF MATERIAL

Bar	No.	Size	Length	Shape
a ₁ (E)	116	5	3'-9"	
a ₁ (E)	604	5	4'-1"	
a ₂ (E)	6	5	29'-0"	
a ₃ (E)	2	5	26'-9"	
b(E)	20	4	22'-4"	
b ₁ (E)	48	4	33'-0"	
c(E)	14	5	9'-0"	
c ₁ (E)	2	5	8'-4"	
d(E)	1050	5	4'-2"	
d ₁ (E)	12	5	4'-5"	
e ₁ (E)	12	4	8'-9"	
e ₂ (E)	6	4	16'-7"	
e ₃ (E)	6	5	13'-9"	
e ₄ (E)	12	5	6'-0"	
e ₅ (E)	12	5	6'-9"	
e ₆ (E)	4	4	12'-7"	
e ₇ (E)	30	4	13'-3"	
e ₈ (E)	4	4	6'-4"	
e ₉ (E)	3	5	13'-4"	
e ₁₀ (E)	4	5	5'-10"	
e ₁₁ (E)	6	4	15'-8"	
e ₁₂ (E)	6	4	5'-2"	
e ₁₃ (E)	50	4	12'-3"	
e ₁₄ (E)	24	4	12'-2"	
f ₁ (E)	54	4	11'-7"	
f ₂ (E)	12	4	8'-6"	
f ₃ (E)	6	4	11'-9"	

Bar	No.	Size	Length	Shape
e ₁ (E)	12	4	10'-7"	
e ₂ (E)	12	4	9'-2"	
e ₃ (E)	3	5	11'-9"	
e ₄ (E)	6	5	5'-0"	
e ₅ (E)	6	4	5'-0"	
e ₆ (E)	6	4	11'-6"	



SHEET HAR-5A OF 5

STATE OF ILLINOIS
DEPARTMENT OF TRANSPORTATION
F.A.I. ROUTE 90/94 (DAN RYAN EXPRESSWAY)
SECTION 1985-080 R COOK COUNTY
ROADWAY GRADING AND PAVING
HARRISON ST. BRIDGE OVER S.B. DAN RYAN EXPY.
CONCRETE REPAIR

Scale: NONE
Date: AUG. 14, 1987
Drawn By: RAS
Checked By: CDS
ENVIRODYNE ENGINEERS INC.
Chicago, Illinois

REVISIONS	
Name	Date
Revision	2-5-89
Revision	4-22-88

FILE PATH = C:\Project\ase\19-0820 - Circle 60W26 As-Built.dgn

D160W26-sht-AS-BUILT-08.dgn	DESIGNED -	REVISED -
USER NAME = ayeuengh	DRAWN -	REVISED -
PLOT SCALE = 1:8000' / in.	CHECKED -	REVISED -
PLOT DATE = 8/16/2013	DATE - 07/15/13	REVISED -

STATE OF ILLINOIS
DEPARTMENT OF TRANSPORTATION

EXISTING AS-BUILTS SN 016-1087

SCALE: NTS SHEET AS-08 OF AS-62 SHEETS STA. TO STA.

F.A.I. RTE.	SECTION	COUNTY	TOTAL SHEETS	SHEET NO.
90/94/290	2013-008R	COOK	559	306
CONTRACT NO. 60W26				
ILLINOIS FED. AID PROJECT				